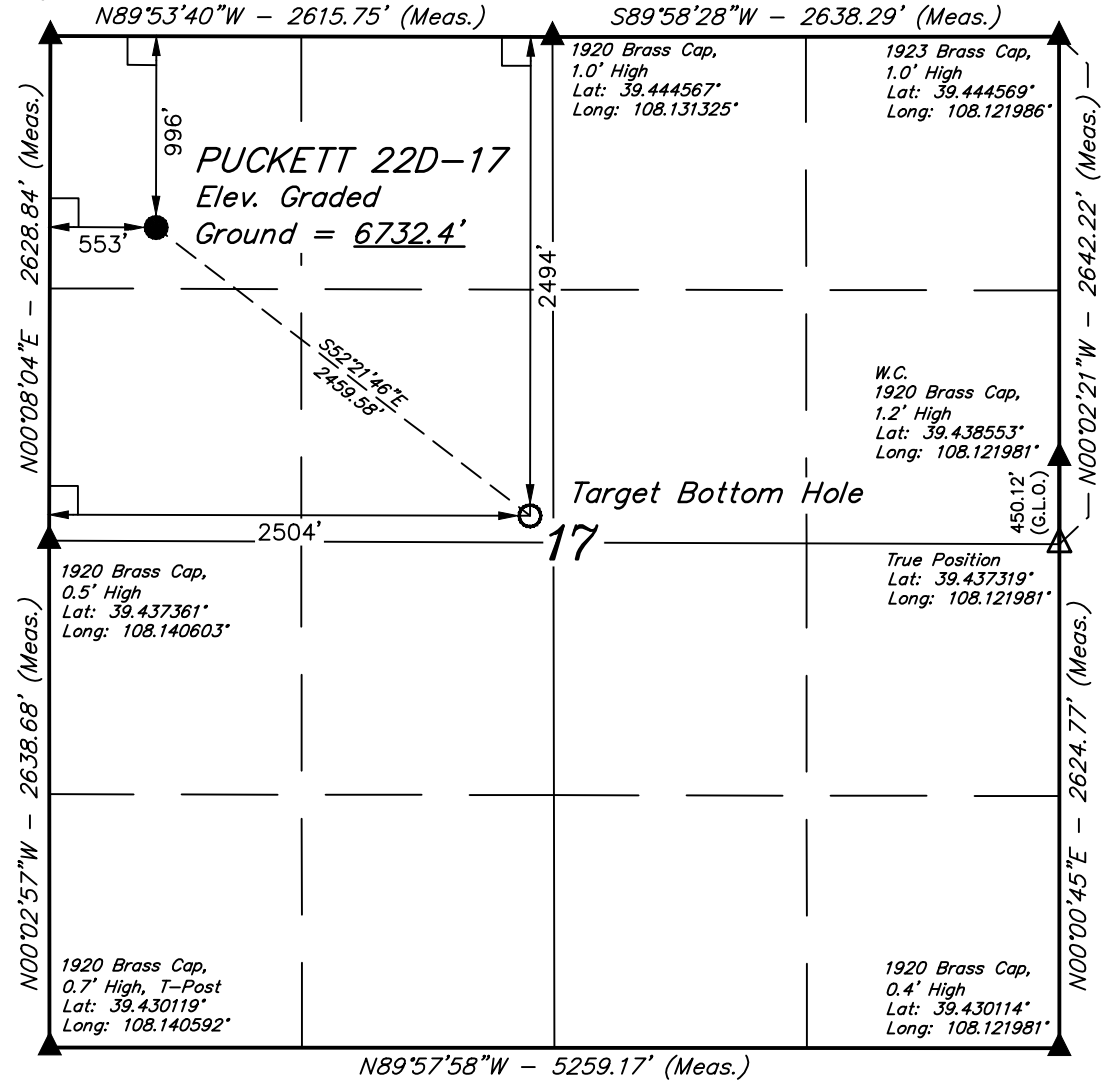


LEGEND:

- └ = 90° SYMBOL
- = PROPOSED WELLHEAD.
- = TARGET BOTTOM HOLE.
- ▲ = SECTION CORNERS LOCATED. (NAD 83)
- △ = SECTION CORNERS RE-ESTABLISHED. (Not Set on Ground.) (NAD 83)

T7S, R96W, 6th P.M.

1920 Brass Cap,
1.0' High
Lat: 39.444578°
Long: 108.140586°



NAD 83 (TARGET BOTTOM HOLE)	NAD 83 (SURFACE LOCATION)
LATITUDE = 39°26'15.80" (39.437722)	LATITUDE = 39°26'30.63" (39.441842)
LONGITUDE = 108°07'54.26" (108.131739)	LONGITUDE = 108°08'19.09" (108.138636)
NAD 27 (TARGET BOTTOM HOLE)	NAD 27 (SURFACE LOCATION)
LATITUDE = 39°26'15.87" (39.437742)	LATITUDE = 39°26'30.71" (39.441864)
LONGITUDE = 108°07'51.98" (108.131106)	LONGITUDE = 108°08'16.81" (108.138003)
UTM NAD 27 (ZONE 12)	UTM NAD 27 (ZONE 12)
N: 14334206.70 E: 2450490.80	N: 14335645.50 E: 2448495.80

CERTIFICATE

THIS IS TO CERTIFY THAT THE ABOVE PLAT WAS PREPARED FROM FIELD NOTES OF ACTUAL SURVEYS MADE BY ME OR UNDER MY SUPERVISION AND THAT THE SAME ARE TRUE AND CORRECT TO THE BEST OF MY KNOWLEDGE AND BELIEF.

Brian Baker
 REGISTERED LAND SURVEYOR
 REGISTRATION NO. 38130
 STATE OF COLORADO

BASIS OF BEARINGS

BASIS OF BEARINGS IS A G.P.S. OBSERVATION

BASIS OF ELEVATION

SPOT ELEVATION AT THE NORTHWEST CORNER OF SECTION 30, T5S, R95W, 6th P.M., TAKEN FROM THE FORKED GULCH QUADRANGLE, GARFIELD COUNTY, COLORADO, 7.5 MINUTE QUAD. (TOPOGRAPHIC MAP) PUBLISHED BY THE UNITED STATES DEPARTMENT OF THE INTERIOR, GEOLOGICAL SURVEY. SAID ELEVATION IS MARKED AS BEING 5966 FEET.

Caerus Oil & Gas LLC

PUCKETT 22D-17
 NW 1/4 NW 1/4, SECTION 17, T7S, R96W, 6th P.M.
 GARFIELD COUNTY, COLORADO



UELS, LLC
 Corporate Office * 85 South 200 East
 Vernal, UT 84078 * (435) 789-1017



SURVEYED BY: BRIAN BAKER, B.B.	DATE: 08-17-15
DRAWN BY: T.B.	DATE DRAWN: 01-06-16
SCALE: 1" = 1000'	REVISED: 00-00-00

WELL LOCATION PLAT