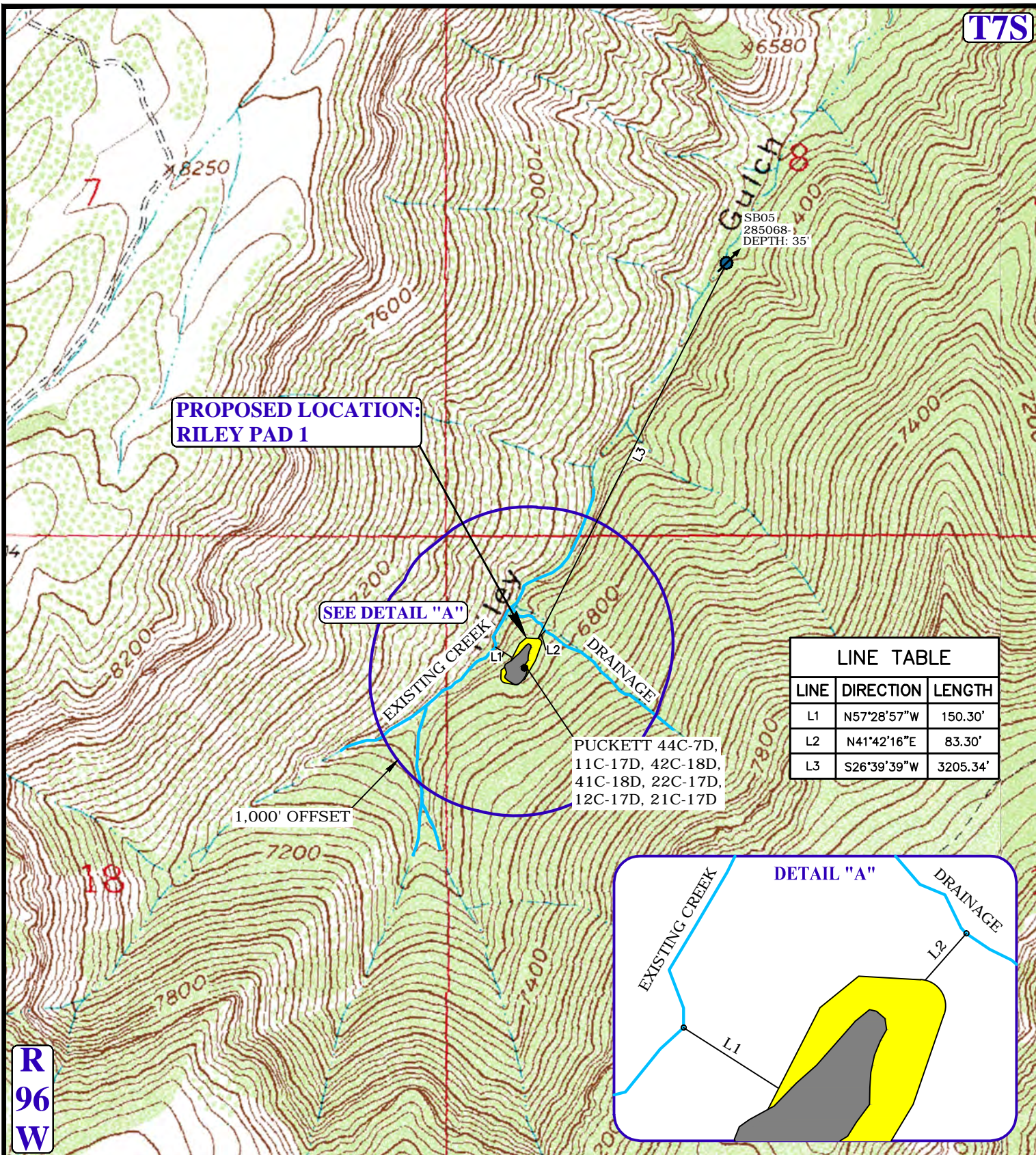


T7S



**R
96
W**

LEGEND:

- EXISTING DRAINAGE
- 1000' OFFSET BOUNDARY
- EDGE OF DISTURBANCE
- WATER WELLS

Caerus Oil & Gas LLC

RILEY PAD 1
NW 1/4 NW 1/4, SECTION 17, T7S, R96W, 6th P.M.
GARFIELD COUNTY, COLORADO

DRAWN BY: R.C.	DATE DRAWN: 12-04-15
SCALE: 1" = 1000'	REVISED: 01-20-16 J.D.J.
HYDROLOGY MAP	TOPO W



UELS, LLC
Corporate Office * 85 South 200 East
Vernal, UT 84078 * (435) 789-1017

