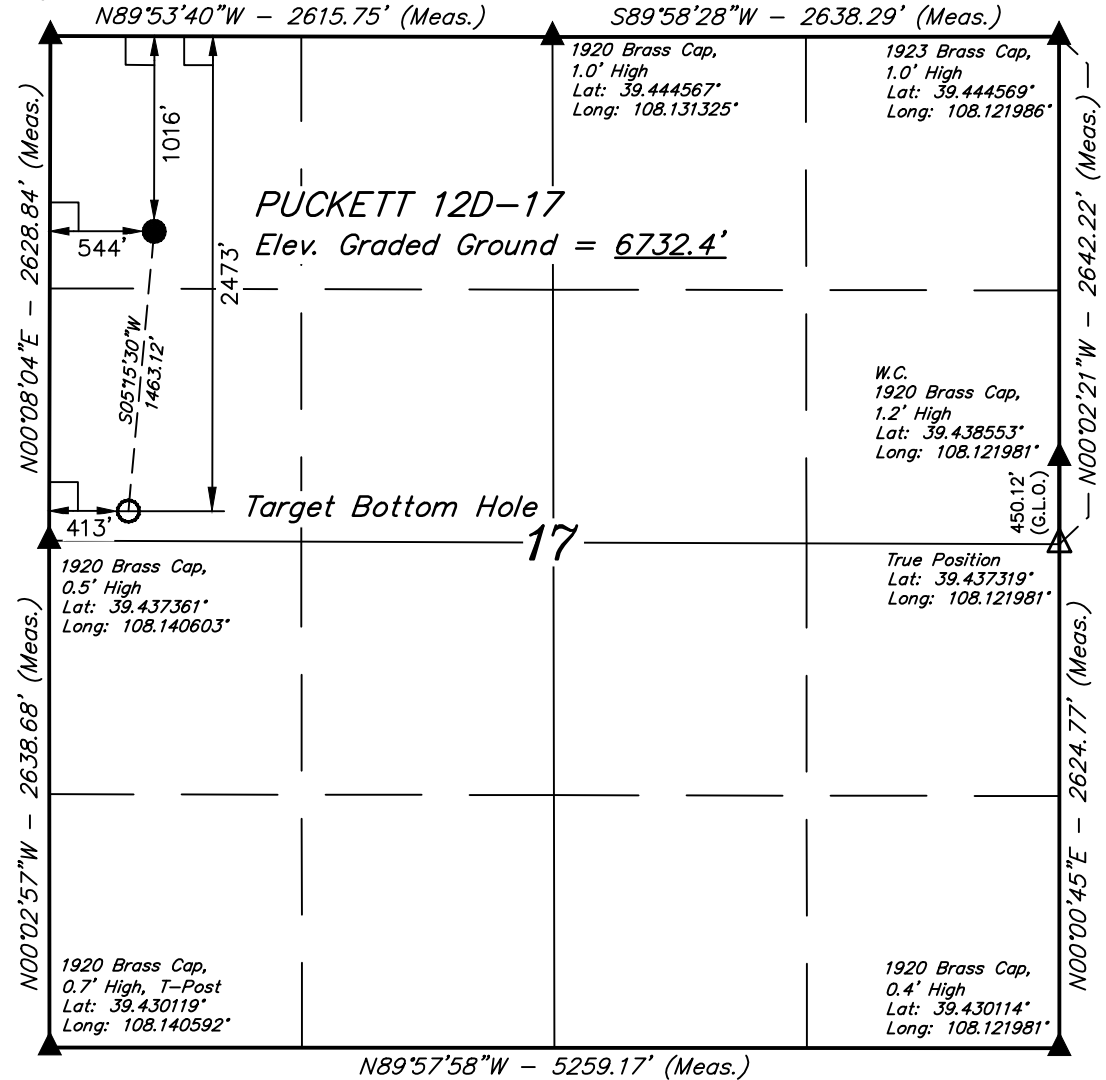


T7S, R96W, 6th P.M.

LEGEND:

- └─ = 90° SYMBOL
- = PROPOSED WELLHEAD.
- = TARGET BOTTOM HOLE.
- ▲ = SECTION CORNERS LOCATED. (NAD 83)
- △ = SECTION CORNERS RE-ESTABLISHED. (Not Set on Ground.) (NAD 83)

1920 Brass Cap,
1.0' High
Lat: 39.444578°
Long: 108.140586°



N00°08'04"E - 2628.84' (Meas.)

N00°02'57"W - 2638.68' (Meas.)

N00°02'45"E - 2624.77' (Meas.)

N00°02'21"W - 2642.22' (Meas.)

N89°57'58"W - 5259.17' (Meas.)

N89°53'40"W - 2615.75' (Meas.)

S89°58'28"W - 2638.29' (Meas.)

W.C. 1920 Brass Cap, 1.2' High
Lat: 39.438553°
Long: 108.121981°

True Position
Lat: 39.437319°
Long: 108.121981°

1920 Brass Cap, 0.5' High
Lat: 39.437361°
Long: 108.140603°

1920 Brass Cap, 0.7' High, T-Post
Lat: 39.430119°
Long: 108.140592°

1920 Brass Cap, 1.0' High
Lat: 39.444567°
Long: 108.131325°

1923 Brass Cap, 1.0' High
Lat: 39.444569°
Long: 108.121986°

1920 Brass Cap, 0.4' High
Lat: 39.430114°
Long: 108.121981°

450.12' (G.L.O.)

544'

1016'

2473'

413'

S05°15'30"W
1463.12'

17

17

17

17

17

17

544'

1016'

2473'

413'

S05°15'30"W
1463.12'

17

17

17

17

17

17

17

544'

1016'

2473'

413'

S05°15'30"W
1463.12'

17

17

17

17

17

17

17

544'

1016'

2473'

413'

S05°15'30"W
1463.12'

17

17

17

17

17

17

17

544'

1016'

2473'

413'

S05°15'30"W
1463.12'

17

17

17

17

17

17

17

544'

1016'

2473'

413'

S05°15'30"W
1463.12'

17

17

17

17

17

17

17

544'

1016'

2473'

413'

S05°15'30"W
1463.12'

17

17

17

17

17

17

17

544'

1016'

2473'

413'

S05°15'30"W
1463.12'

17

17

17

17

17

17

17

544'

1016'

2473'

413'

S05°15'30"W
1463.12'

17

17

17

17

17

17

17

544'

1016'

2473'

413'

S05°15'30"W
1463.12'

17

17

17

17

17

17

17

544'

1016'

2473'

413'

S05°15'30"W
1463.12'

17

17

17

17

17

17

17

544'

1016'

2473'

413'

S05°15'30"W
1463.12'

17

17

17

17

17

17

17

544'

1016'

2473'

413'

S05°15'30"W
1463.12'

17

17

17

17

17

17

17

544'

1016'

2473'

413'

S05°15'30"W
1463.12'

17

17

17

17

17

17

17

544'

1016'

2473'

413'

S05°15'30"W
1463.12'

17

17

17

17

17

17

17

544'

1016'

2473'

413'

S05°15'30"W
1463.12'

17

17

17

17

17

17

17

544'

1016'

2473'

413'

S05°15'30"W
1463.12'

17

17

17

17

17

17

17

544'

1016'

2473'

413'

S05°15'30"W
1463.12'

17

17

17

17

17

17

17

544'

1016'

2473'

413'

S05°15'30"W
1463.12'

17

17

17

17

17

17

17

544'

1016'

2473'

413'

S05°15'30"W
1463.12'

17

17

17

17

17

17

17

544'

1016'

2473'

413'

S05°15'30"W
1463.12'

17

17

17

17

17

17

17

544'

1016'

2473'

413'

S05°15'30"W
1463.12'

17

17

17

17

17

17

17

544'

1016'