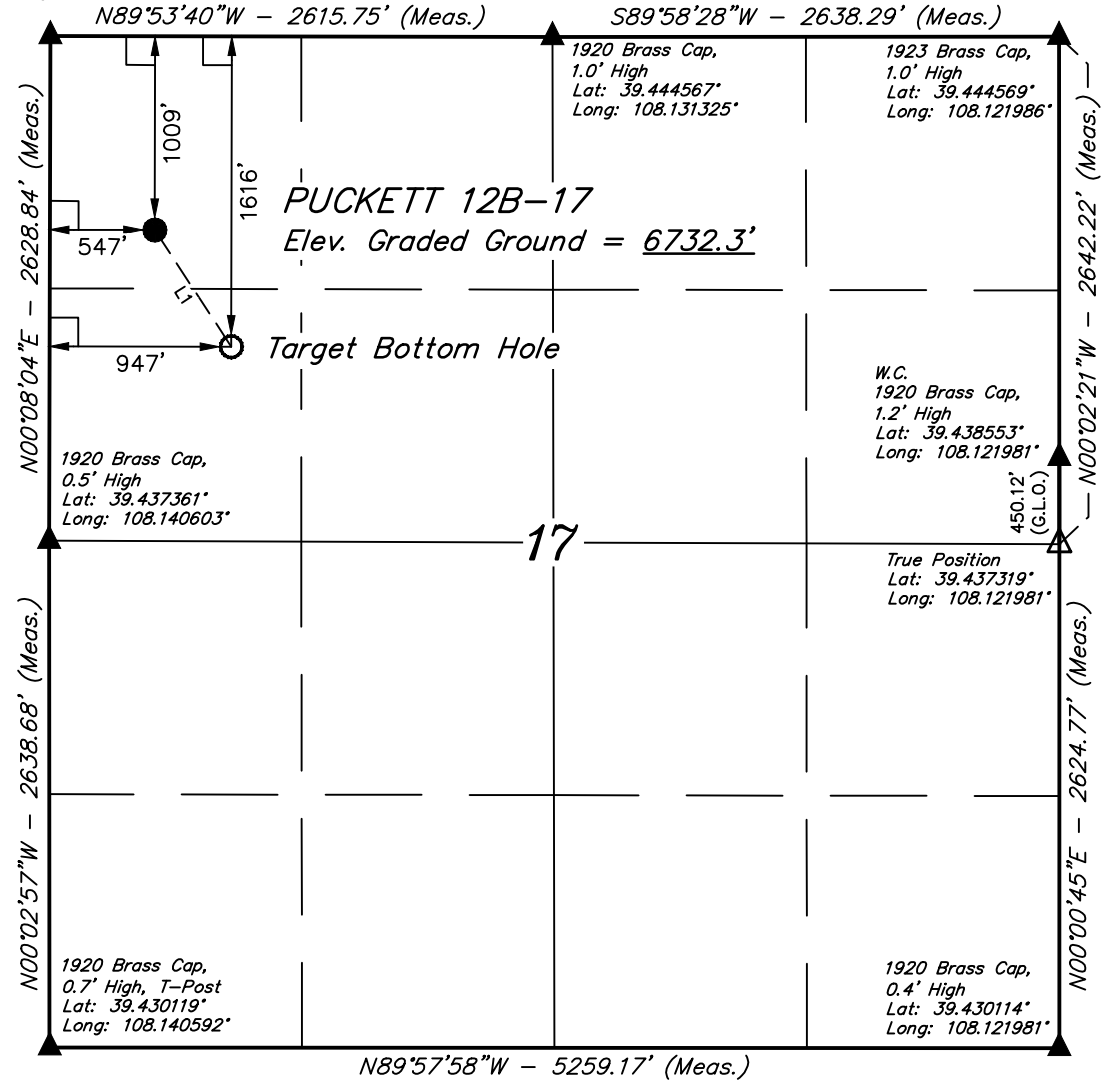


# T7S, R96W, 6th P.M.

## LEGEND:

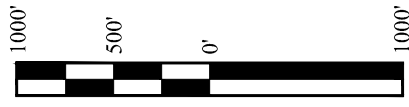
- └─ = 90° SYMBOL
- = PROPOSED WELLHEAD.
- = TARGET BOTTOM HOLE.
- ▲ = SECTION CORNERS LOCATED. (NAD 83)
- △ = SECTION CORNERS RE-ESTABLISHED. (Not Set on Ground.) (NAD 83)

1920 Brass Cap,  
1.0' High  
Lat: 39.444578°  
Long: 108.140586°



LINE TABLE		
LINE	DIRECTION	LENGTH
L1	S33°14'49"E	726.83'

PDOP = 3.1



NAD 83 (TARGET BOTTOM HOLE)	NAD 83 (SURFACE LOCATION)
LATITUDE = 39°26'24.49" (39.440136)	LATITUDE = 39°26'30.50" (39.441806)
LONGITUDE = 108°08'14.09" (108.137247)	LONGITUDE = 108°08'19.17" (108.138658)
NAD 27 (TARGET BOTTOM HOLE)	NAD 27 (SURFACE LOCATION)
LATITUDE = 39°26'24.57" (39.440158)	LATITUDE = 39°26'30.57" (39.441825)
LONGITUDE = 108°08'11.80" (108.136611)	LONGITUDE = 108°08'16.88" (108.138022)
UTM NAD 27 (ZONE 12)	UTM NAD 27 (ZONE 12)
N: 14335036.80 E: 2448907.90	N: 14335631.60 E: 2448490.10

CERTIFICATE

THIS IS TO CERTIFY THAT THE ABOVE PLAT WAS PREPARED FROM FIELD NOTES OF ACTUAL SURVEYS MADE BY ME UNDER MY SUPERVISION AND THAT THE SAME ARE TRUE AND CORRECT TO THE BEST OF MY KNOWLEDGE AND BELIEF.

*Handwritten Signature*

REGISTERED LAND SURVEYOR  
REGISTRATION NO. 8180  
STATE OF COLORADO

PROVIDENT

38130

08-17-15

### BASIS OF BEARINGS

BASIS OF BEARINGS IS A G.P.S. OBSERVATION

### BASIS OF ELEVATION

SPOT ELEVATION AT THE NORTHWEST CORNER OF SECTION 30, T5S, R95W, 6th P.M., TAKEN FROM THE FORKED GULCH QUADRANGLE, GARFIELD COUNTY, COLORADO, 7.5 MINUTE QUAD. (TOPOGRAPHIC MAP) PUBLISHED BY THE UNITED STATES DEPARTMENT OF THE INTERIOR, GEOLOGICAL SURVEY. SAID ELEVATION IS MARKED AS BEING 5966 FEET.

## Caerus Oil & Gas LLC

**PUCKETT 12B-17**  
NW 1/4 NW 1/4, SECTION 17, T7S, R96W, 6th P.M.  
GARFIELD COUNTY, COLORADO



SURVEYED BY: BRIAN BAKER, B.B.	DATE: 08-17-15
DRAWN BY: T.B.	DATE DRAWN: 01-06-16
SCALE: 1" = 1000'	REVISED: 00-00-00



**UELS, LLC**  
Corporate Office \* 85 South 200 East  
Vernal, UT 84078 \* (435) 789-1017

## WELL LOCATION PLAT