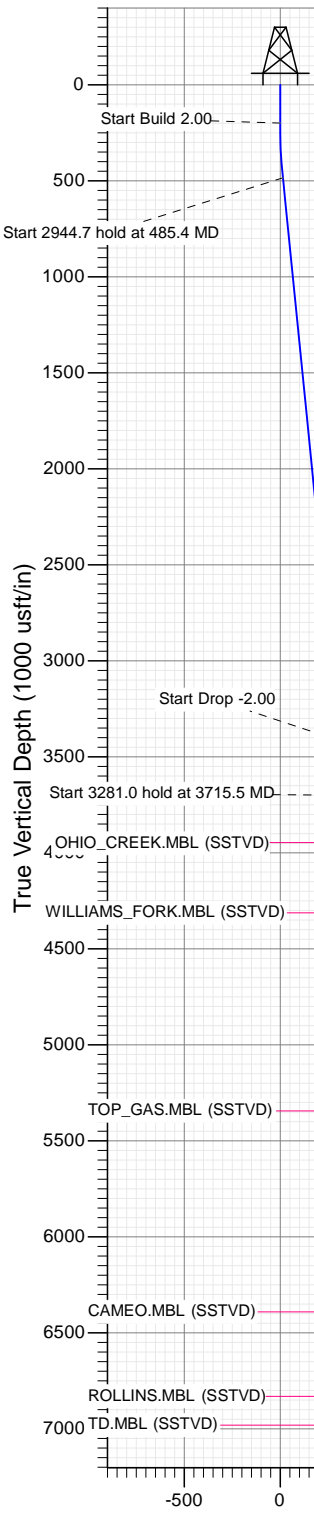




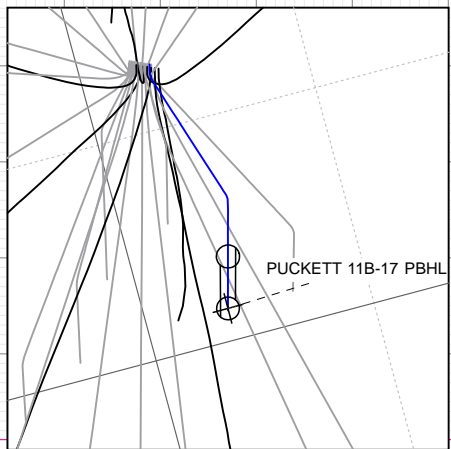
SECTION DETAILS

Sec	MD	Inc	Azi	TVD	+N/-S	+E/-W	Dleg	TFace	Vsect	Target
1	0.0	0.00	0.00	0.0	0.0	0.0	0.00	0.00	0.0	
2	200.0	0.00	0.00	200.0	0.0	0.0	0.00	0.00	0.0	
3	485.4	5.71	22.56	485.0	13.1	5.5	2.00	22.56	14.2	
4	3430.1	5.71	22.56	3415.0	283.6	117.8	0.00	0.00	307.1	
5	3715.5	0.00	0.00	3700.0	296.7	123.3	2.00	180.00	321.3	
6	6996.5	0.00	0.00	6981.0	296.7	123.3	0.00	0.00	321.3	PUCKETT 11B-17 PBHL

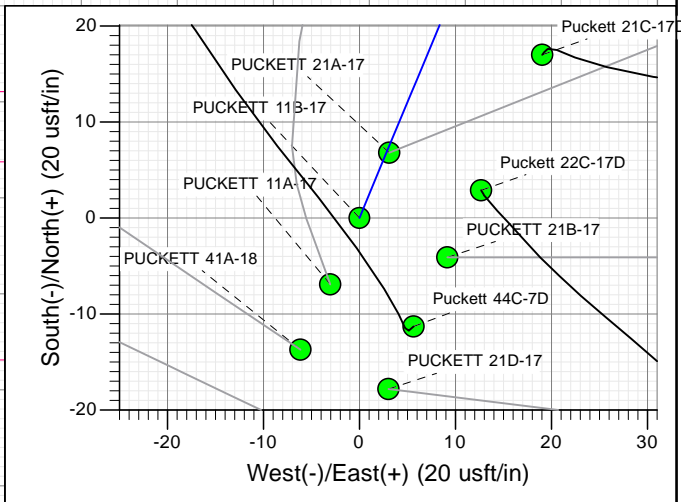
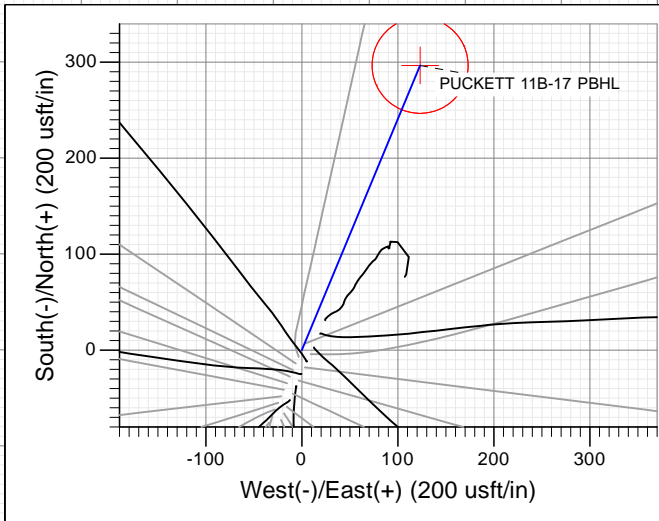


Project: Garfield County, CO (UTM 12
 Site: S17-T7S-R96W (RILEY 1)
 Well: PUCKETT 11B-17
 Wellbore: OH
 Design: PLAN #2

FORMATION TOP DETAILS		
TVDPath	MDPath	Formation
3947.0	3962.5	OHIO_CREEK.MBL (SSTVD)
4313.0	4328.5	WILLIAMS_FORK.MBL (SSTVD)
5344.0	5359.5	TOP_GAS.MBL (SSTVD)
6391.0	6406.5	CAMEO.MBL (SSTVD)
6831.0	6846.5	ROLLINS.MBL (SSTVD)
6981.0	6996.5	TD.MBL (SSTVD)



Type	Target	Azimuth	Origin	N/S	E/W	From
TD	No Target (Freehand)	Slot	Type	0.0	0.0	TVD
Name		TVD	+N/-S	+E/-W	Latitude	Longitude
PUCKETT 11B-17 PBHL		6981.0	296.7	123.3	39.442840	-108.137511



T M
 Azimuths to True North
 Magnetic North: 9.75°
 Magnetic Field
 Strength: 51971.4snT
 Dip Angle: 65.73°
 Date: 11/19/2015
 Model: HDGM

CASING DETAILS	
No casing data is available	

Vertical Section at 22.56° (1000 usft/in)

WELL DETAILS: PUCKETT 11B-17

+N/-S	+E/-W	Northing	Ground Level:	6734.0	Latitude	Longitude
0.0	0.0	14335704.80	Easting	2448509.40	39.442025	-108.137947



Planning Report

Database:	USA EDM 5000 Multi Users DB	Local Co-ordinate Reference:	Well PUCKETT 11B-17
Company:	Caerus Oil & Gas	TVD Reference:	KB @ 6764.0usft
Project:	Garfield County, CO (UTM 12N)	MD Reference:	KB @ 6764.0usft
Site:	S17-T7S-R96W (RILEY 1)	North Reference:	True
Well:	PUCKETT 11B-17	Survey Calculation Method:	Minimum Curvature
Wellbore:	OH		
Design:	PLAN #2		

Project	Garfield County, CO (UTM 12N)		
Map System:	Universal Transverse Mercator (US Survey Feet)	System Datum:	Mean Sea Level
Geo Datum:	NAD 1927 - Western US		
Map Zone:	Zone 12N (114 W to 108 W)		

Site	S17-T7S-R96W (RILEY 1)				
Site Position:		Northing:	14,335,697.50 usft	Latitude:	39.442005
From:	Map	Easting:	2,448,508.30 usft	Longitude:	-108.137952
Position Uncertainty:	0.0 usft	Slot Radius:	13-3/16"	Grid Convergence:	1.82 °

Well	PUCKETT 11B-17					
Well Position	+N/-S	0.0 usft	Northing:	14,335,704.80 usft	Latitude:	39.442025
	+E/-W	0.0 usft	Easting:	2,448,509.40 usft	Longitude:	-108.137947
Position Uncertainty		0.0 usft	Wellhead Elevation:	0.0 usft	Ground Level:	6,734.0 usft

Wellbore	OH				
Magnetics	Model Name	Sample Date	Declination	Dip Angle	Field Strength
			(°)	(°)	(nT)
	HDGM	11/19/2015	9.75	65.73	51,971

Design	PLAN #2			
Audit Notes:				
Version:	Phase:	PLAN	Tie On Depth:	0.0
Vertical Section:	Depth From (TVD)	+N/-S	+E/-W	Direction
	(usft)	(usft)	(usft)	(°)
	0.0	0.0	0.0	22.56

Plan Sections										
Measured Depth (usft)	Inclination (°)	Azimuth (°)	Vertical Depth (usft)	+N/-S (usft)	+E/-W (usft)	Dogleg Rate (°/100usft)	Build Rate (°/100usft)	Turn Rate (°/100usft)	TFO (°)	Target
0.0	0.00	0.00	0.0	0.0	0.0	0.00	0.00	0.00	0.00	
200.0	0.00	0.00	200.0	0.0	0.0	0.00	0.00	0.00	0.00	
485.4	5.71	22.56	485.0	13.1	5.5	2.00	2.00	0.00	22.56	
3,430.1	5.71	22.56	3,415.0	283.6	117.8	0.00	0.00	0.00	0.00	
3,715.5	0.00	0.00	3,700.0	296.7	123.3	2.00	-2.00	0.00	180.00	
6,996.5	0.00	0.00	6,981.0	296.7	123.3	0.00	0.00	0.00	0.00	PUCKETT 11B-17 PB

Planning Report

Database:	USA EDM 5000 Multi Users DB	Local Co-ordinate Reference:	Well PUCKETT 11B-17
Company:	Caerus Oil & Gas	TVD Reference:	KB @ 6764.0usft
Project:	Garfield County, CO (UTM 12N)	MD Reference:	KB @ 6764.0usft
Site:	S17-T7S-R96W (RILEY 1)	North Reference:	True
Well:	PUCKETT 11B-17	Survey Calculation Method:	Minimum Curvature
Wellbore:	OH		
Design:	PLAN #2		

Planned Survey									
Measured Depth (usft)	Inclination (°)	Azimuth (°)	Vertical Depth (usft)	+N/-S (usft)	+E/-W (usft)	Vertical Section (usft)	Dogleg Rate (°/100usft)	Build Rate (°/100u)	Comments / Formations
0.0	0.00	0.00	0.0	0.0	0.0	0.0	0.00	0.00	
100.0	0.00	0.00	100.0	0.0	0.0	0.0	0.00	0.00	
200.0	0.00	0.00	200.0	0.0	0.0	0.0	0.00	0.00	Start Build 2.00
300.0	2.00	22.56	300.0	1.6	0.7	1.7	2.00	2.00	
400.0	4.00	22.56	399.8	6.4	2.7	7.0	2.00	2.00	
485.4	5.71	22.56	485.0	13.1	5.5	14.2	2.00	2.00	Start 2944.7 hold at 485.4 MD
500.0	5.71	22.56	499.5	14.5	6.0	15.7	0.00	0.00	
600.0	5.71	22.56	599.0	23.6	9.8	25.6	0.00	0.00	
700.0	5.71	22.56	698.5	32.8	13.6	35.6	0.00	0.00	
800.0	5.71	22.56	798.0	42.0	17.5	45.5	0.00	0.00	
900.0	5.71	22.56	897.5	51.2	21.3	55.4	0.00	0.00	
1,000.0	5.71	22.56	997.0	60.4	25.1	65.4	0.00	0.00	
1,100.0	5.71	22.56	1,096.5	69.6	28.9	75.3	0.00	0.00	
1,200.0	5.71	22.56	1,196.0	78.8	32.7	85.3	0.00	0.00	
1,300.0	5.71	22.56	1,295.5	87.9	36.5	95.2	0.00	0.00	
1,400.0	5.71	22.56	1,395.0	97.1	40.4	105.2	0.00	0.00	
1,500.0	5.71	22.56	1,494.5	106.3	44.2	115.1	0.00	0.00	
1,600.0	5.71	22.56	1,594.0	115.5	48.0	125.1	0.00	0.00	
1,700.0	5.71	22.56	1,693.5	124.7	51.8	135.0	0.00	0.00	
1,800.0	5.71	22.56	1,793.0	133.9	55.6	145.0	0.00	0.00	
1,900.0	5.71	22.56	1,892.5	143.1	59.4	154.9	0.00	0.00	
2,000.0	5.71	22.56	1,992.0	152.2	63.3	164.9	0.00	0.00	
2,100.0	5.71	22.56	2,091.5	161.4	67.1	174.8	0.00	0.00	
2,200.0	5.71	22.56	2,191.0	170.6	70.9	184.8	0.00	0.00	
2,300.0	5.71	22.56	2,290.5	179.8	74.7	194.7	0.00	0.00	
2,400.0	5.71	22.56	2,390.0	189.0	78.5	204.7	0.00	0.00	
2,500.0	5.71	22.56	2,489.5	198.2	82.3	214.6	0.00	0.00	
2,600.0	5.71	22.56	2,589.0	207.4	86.2	224.5	0.00	0.00	
2,700.0	5.71	22.56	2,688.5	216.5	90.0	234.5	0.00	0.00	
2,800.0	5.71	22.56	2,788.0	225.7	93.8	244.4	0.00	0.00	
2,900.0	5.71	22.56	2,887.6	234.9	97.6	254.4	0.00	0.00	
3,000.0	5.71	22.56	2,987.1	244.1	101.4	264.3	0.00	0.00	
3,100.0	5.71	22.56	3,086.6	253.3	105.2	274.3	0.00	0.00	
3,200.0	5.71	22.56	3,186.1	262.5	109.0	284.2	0.00	0.00	
3,300.0	5.71	22.56	3,285.6	271.7	112.9	294.2	0.00	0.00	
3,400.0	5.71	22.56	3,385.1	280.8	116.7	304.1	0.00	0.00	
3,430.1	5.71	22.56	3,415.0	283.6	117.8	307.1	0.00	0.00	Start Drop -2.00
3,500.0	4.31	22.56	3,484.7	289.3	120.2	313.2	2.00	-2.00	
3,600.0	2.31	22.56	3,584.5	294.6	122.4	319.0	2.00	-2.00	
3,700.0	0.31	22.56	3,684.5	296.7	123.3	321.3	2.00	-2.00	
3,715.5	0.00	0.00	3,700.0	296.7	123.3	321.3	2.00	-2.00	Start 3281.0 hold at 3715.5 MD
3,800.0	0.00	0.00	3,784.5	296.7	123.3	321.3	0.00	0.00	
3,900.0	0.00	0.00	3,884.5	296.7	123.3	321.3	0.00	0.00	
3,962.5	0.00	0.00	3,947.0	296.7	123.3	321.3	0.00	0.00	OHIO_CREEK.MBL (SSTVD)
4,000.0	0.00	0.00	3,984.5	296.7	123.3	321.3	0.00	0.00	
4,100.0	0.00	0.00	4,084.5	296.7	123.3	321.3	0.00	0.00	
4,200.0	0.00	0.00	4,184.5	296.7	123.3	321.3	0.00	0.00	
4,300.0	0.00	0.00	4,284.5	296.7	123.3	321.3	0.00	0.00	
4,328.5	0.00	0.00	4,313.0	296.7	123.3	321.3	0.00	0.00	WILLIAMS_FORK.MBL (SSTVD)
4,400.0	0.00	0.00	4,384.5	296.7	123.3	321.3	0.00	0.00	
4,500.0	0.00	0.00	4,484.5	296.7	123.3	321.3	0.00	0.00	
4,600.0	0.00	0.00	4,584.5	296.7	123.3	321.3	0.00	0.00	

Planning Report

Database:	USA EDM 5000 Multi Users DB	Local Co-ordinate Reference:	Well PUCKETT 11B-17
Company:	Caerus Oil & Gas	TVD Reference:	KB @ 6764.0usft
Project:	Garfield County, CO (UTM 12N)	MD Reference:	KB @ 6764.0usft
Site:	S17-T7S-R96W (RILEY 1)	North Reference:	True
Well:	PUCKETT 11B-17	Survey Calculation Method:	Minimum Curvature
Wellbore:	OH		
Design:	PLAN #2		

Planned Survey									
Measured Depth (usft)	Inclination (°)	Azimuth (°)	Vertical Depth (usft)	+N/-S (usft)	+E/-W (usft)	Vertical Section (usft)	Dogleg Rate (°/100usft)	Build Rate (°/100u)	Comments / Formations
4,700.0	0.00	0.00	4,684.5	296.7	123.3	321.3	0.00	0.00	
4,800.0	0.00	0.00	4,784.5	296.7	123.3	321.3	0.00	0.00	
4,900.0	0.00	0.00	4,884.5	296.7	123.3	321.3	0.00	0.00	
5,000.0	0.00	0.00	4,984.5	296.7	123.3	321.3	0.00	0.00	
5,100.0	0.00	0.00	5,084.5	296.7	123.3	321.3	0.00	0.00	
5,200.0	0.00	0.00	5,184.5	296.7	123.3	321.3	0.00	0.00	
5,300.0	0.00	0.00	5,284.5	296.7	123.3	321.3	0.00	0.00	
5,359.5	0.00	0.00	5,344.0	296.7	123.3	321.3	0.00	0.00	TOP_GAS.MBL (SSTVD)
5,400.0	0.00	0.00	5,384.5	296.7	123.3	321.3	0.00	0.00	
5,500.0	0.00	0.00	5,484.5	296.7	123.3	321.3	0.00	0.00	
5,600.0	0.00	0.00	5,584.5	296.7	123.3	321.3	0.00	0.00	
5,700.0	0.00	0.00	5,684.5	296.7	123.3	321.3	0.00	0.00	
5,800.0	0.00	0.00	5,784.5	296.7	123.3	321.3	0.00	0.00	
5,900.0	0.00	0.00	5,884.5	296.7	123.3	321.3	0.00	0.00	
6,000.0	0.00	0.00	5,984.5	296.7	123.3	321.3	0.00	0.00	
6,100.0	0.00	0.00	6,084.5	296.7	123.3	321.3	0.00	0.00	
6,200.0	0.00	0.00	6,184.5	296.7	123.3	321.3	0.00	0.00	
6,300.0	0.00	0.00	6,284.5	296.7	123.3	321.3	0.00	0.00	
6,400.0	0.00	0.00	6,384.5	296.7	123.3	321.3	0.00	0.00	
6,406.5	0.00	0.00	6,391.0	296.7	123.3	321.3	0.00	0.00	CAMEO.MBL (SSTVD)
6,500.0	0.00	0.00	6,484.5	296.7	123.3	321.3	0.00	0.00	
6,600.0	0.00	0.00	6,584.5	296.7	123.3	321.3	0.00	0.00	
6,700.0	0.00	0.00	6,684.5	296.7	123.3	321.3	0.00	0.00	
6,800.0	0.00	0.00	6,784.5	296.7	123.3	321.3	0.00	0.00	
6,846.5	0.00	0.00	6,831.0	296.7	123.3	321.3	0.00	0.00	ROLLINS.MBL (SSTVD)
6,900.0	0.00	0.00	6,884.5	296.7	123.3	321.3	0.00	0.00	
6,996.5	0.00	0.00	6,981.0	296.7	123.3	321.3	0.00	0.00	TD at 6996.5 - TD.MBL (SSTVD)

Targets									
Target Name	Dip Angle (°)	Dip Dir. (°)	TVD (usft)	+N/-S (usft)	+E/-W (usft)	Northing (usft)	Easting (usft)	Latitude	Longitude
PUCKETT 11B-17 PBHL - hit/miss target - Shape - plan hits target center - Circle (radius 50.0)	0.00	0.00	6,981.0	296.7	123.3	14,336,005.30	2,448,623.20	39.442840	-108.137511

Formations					
Measured Depth (usft)	Vertical Depth (usft)	Name	Lithology	Dip (°)	Dip Direction (°)
3,962.5	3,947.0	OHIO_CREEK.MBL (SSTVD)		0.00	
4,328.5	4,313.0	WILLIAMS_FORK.MBL (SSTVD)		0.00	
5,359.5	5,344.0	TOP_GAS.MBL (SSTVD)		0.00	
6,406.5	6,391.0	CAMEO.MBL (SSTVD)		0.00	
6,846.5	6,831.0	ROLLINS.MBL (SSTVD)		0.00	
6,996.5	6,981.0	TD.MBL (SSTVD)		0.00	

Planning Report

Database:	USA EDM 5000 Multi Users DB	Local Co-ordinate Reference:	Well PUCKETT 11B-17
Company:	Caerus Oil & Gas	TVD Reference:	KB @ 6764.0usft
Project:	Garfield County, CO (UTM 12N)	MD Reference:	KB @ 6764.0usft
Site:	S17-T7S-R96W (RILEY 1)	North Reference:	True
Well:	PUCKETT 11B-17	Survey Calculation Method:	Minimum Curvature
Wellbore:	OH		
Design:	PLAN #2		

Plan Annotations				
Measured Depth (usft)	Vertical Depth (usft)	Local Coordinates		Comment
		+N/-S (usft)	+E/-W (usft)	
200.0	200.0	0.0	0.0	Start Build 2.00
485.4	485.0	13.1	5.5	Start 2944.7 hold at 485.4 MD
3,430.1	3,415.0	283.6	117.8	Start Drop -2.00
3,715.5	3,700.0	296.7	123.3	Start 3281.0 hold at 3715.5 MD
6,996.5	6,981.0	296.7	123.3	TD at 6996.5