

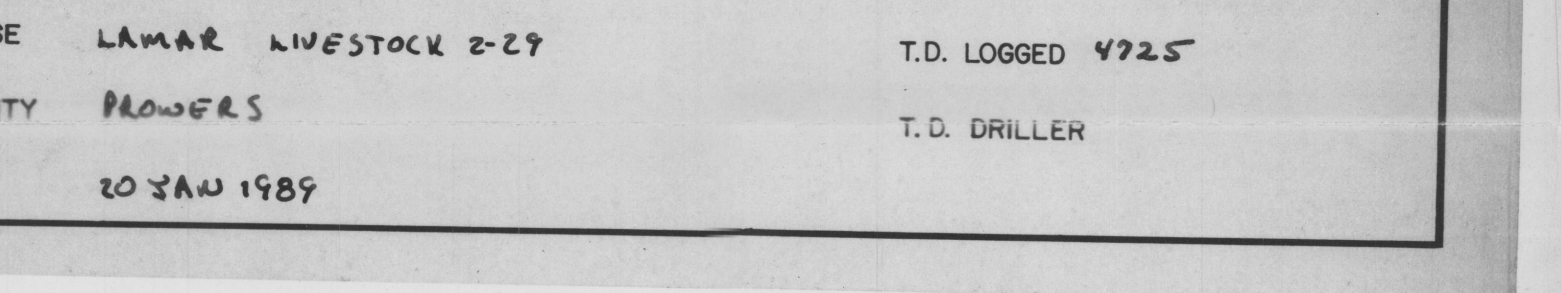
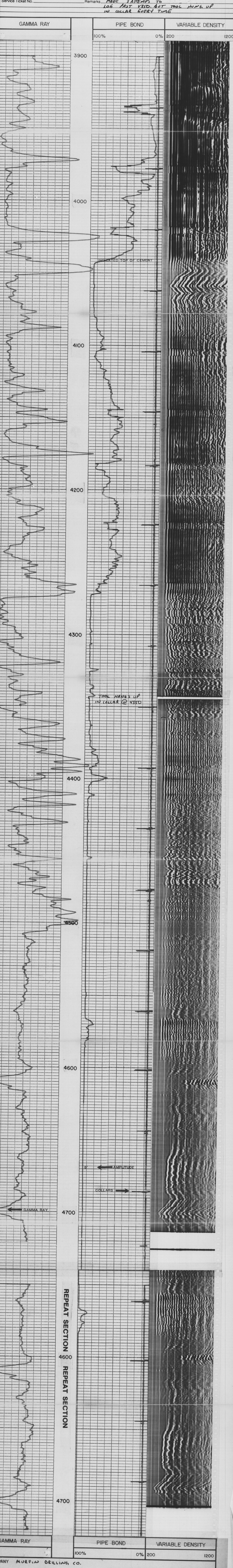
Metcally

VARIABLE INTENSITY
CEMENT BOND LOG

COMPANY		MURFIN DRILLING CO.	
WELL		LAMAR LIVESTOCK 2-29	
FIELD		CHANNING	
COUNTY		PRAWERS	
STATE		OKLAHOMA	
Location		NE 51-2-50	
Sec.		29	
Twp.		21S	
Rge.		46W	
Permament Datum		6.1	
Log Measured From		K.S.	
Limiting Measured From		K.S.	
Elev.		3752	
D.F.		3752	
Run No.		ONE	
Date & Time Survey		20 JAN 1989	
Type Cementing Operation		REWORK	
Depth Meter		4725	
Depth Interval		4724 to 4725	
Casing Depth		838 @ 4725	
Fluid Collar - D.V. Tool		-	
Source Depth		1505X HALLIBURTON	
Amount & Type Cement		1505X CLASS H 10/65 SALT 31/8 CEMENT 4" FUEL	
Type Fluid in Hole		BENTON	
Fluid Level		FUEL	
Salinity PPM Cl		FUEL	
Weight lb/gal - vis		FUEL	
Approx. Logged Cem. Top		4725	
Calculated Cement Top		-	
Max. Hole Temperature		-	
Tool No.		292	
Spacing Recorded		5	
Equipment - Location		P. R. H. 5003	
Recorded by		P. R. H. 5003	
Witnessed by		E. A. HOFFMAN	

12 1/4	0	920	85/8	24 1/2	0	920	
7 7/8	0	9775	4 1/2	10.5	0	-	Scratched Interval
							Open Perforations

Service Ticket No. _____ Remarks **MADE 3 ATTEMPTS TO LOG LAST 4350. BUT TOOL HUNG UP IN COLLAR EVERY TIME**



REPEAT SECTION REPEAT SECTION

4600 4700

COMPANY MURFIN DRILLING CO. LEASE LAMAR LIVESTOCK 2-29 COUNTY PRAWERS DATE 20 JAN 1989

T.D. LOGGED 4725 T.D. DRILLER