



Radial Bond Log
Gamma Ray
CCL

Company Encana Oil and Gas
Well Dowdy 32-10
Field Wattenberg
County Weld State CO

Location: API #: 05-123-20609

SW/NE

SEC 10 TWP 2N RGE 65W

Permanent Datum Ground Level Elevation 4,886'
Log Measured From Kelly Bushing
Drilling Measured From 13' Above Permanent Datum

Other Services
None

Elevation
K.B. 4,873'
D.F. 4,874'
G.L. 4,886'

Date

Run Number 20-AUG-2015

Depth Driller

One 7920'

Depth Logger

2023'

Bottom Logged Interval

2013'

Top Log Interval

Surface

Open Hole Size

7 7/8"

Type Fluid

Water

Density / Viscosity

NA

Max. Recorded Temp.

NA

Estimated Cement Top

Surface

Time Well Ready

Upon Arrival

Time Logger on Bottom

7:00 AM

Equipment Number

203

Location

Ault, CO

Recorded By

Chris Blankenhorn

Witnessed By

Carl Reyes

Borehole Record

Run Number Bit From To Size Weight From To

Tubing Record

Size Wgt/Ft 24# Surface 896'

Casing Record

Size Wgt/Ft 24# Surface 896'

Surface String

8 5/8"

Prot. String

4 1/2"

Production String

11.6# Surface 7911'

Liner

7911'

<<< Fold Here >>>

All interpretations are opinions based on inferences from electrical or other measurements and we cannot and do not guarantee the accuracy or correctness of any interpretation, and we shall not, except in the case of gross or willful negligence on our part, be liable or responsible for any loss, costs, damages, or expenses incurred or sustained by anyone resulting from any interpretation made by any of our officers, agents or employees. These interpretations are also subject to our general terms and conditions set out in our current Price Schedule.

Comments

Thank you for chosing Cutters Wireline

Correlated to KB

Your crew today: C. Blankenhorn, D. Morrow, J. Wilson

Calibration Report

Database File: encana dowdy 32-10.db
Dataset Pathname: pass11.1
Dataset Creation: Thu Aug 20 07:48:26 2015 by Calc 7.0 B1

Gamma Ray Calibration Report

Serial Number:	275D_with_INC	
Tool Model:	275D_INC	
Performed:	Tue Jan 15 11:42:10 2013	
Calibrator Value:	300.0	GAPI
Background Reading:	0.0	cps
Calibrator Reading:	400.0	cps
Sensitivity:	0.7375	GAPI/cps

Inclinometer Calibration Report

Performed:	Fri Apr 04 16:42:15 2008				
	Low Read.	High Read.	Low Ref.	High Ref.	
X Accelerometer	-3579.00	3617.00	-1.00	1.00	gee
Y Accelerometer	-3671.40	3529.80	-1.00	1.00	gee
Z Accelerometer	-20.40	3584.00	0.00	1.00	gee

Segmented Cement Bond Log Calibration Report

Serial Number:	110217	
Tool Model:	Probe	
Calibration Casing Diameter:	4.500	in
Calibration Depth:	1943.913	ft

Master Calibration, performed Thu Aug 20 07:08:50 2015:

	Raw (v)		Calibrated (mv)		Results	
	Zero	Cal	Zero	Cal	Gain	Offset
3'	1.236	0.571	1.500	81.196	138.400	0.500
CAL	0.497	0.577				
5'	0.115	0.497	1.500	81.196	208.678	-22.537
SUM						
S1	0.017	0.503	0.250	100.000	205.093	-3.215
S2	0.029	0.555	0.250	100.000	189.546	-5.229
S3	0.031	0.620	0.250	100.000	169.200	-4.965
S4	0.029	0.629	0.250	100.000	166.162	-4.588
S5	0.010	0.607	0.250	100.000	166.827	-1.338
S6	0.014	0.588	0.250	100.000	173.744	-2.108
S7	0.021	0.536	0.250	100.000	193.647	-3.726
S8	0.021	0.500	0.250	100.000	208.489	-4.206

Internal Reference Calibration, performed Wed Jul 15 08:33:35 2015:

	Raw (v)		Calibrated (v)		Results	
	Zero	Cal	Zero	Cal	Gain	Offset
CAL	0.000	0.000	0.497	0.577	1.000	0.000

Air Zero Calibration, performed Fri Jul 17 07:14:29 2015:

	Raw (v)	Calibrated (v)	Results
--	---------	----------------	---------

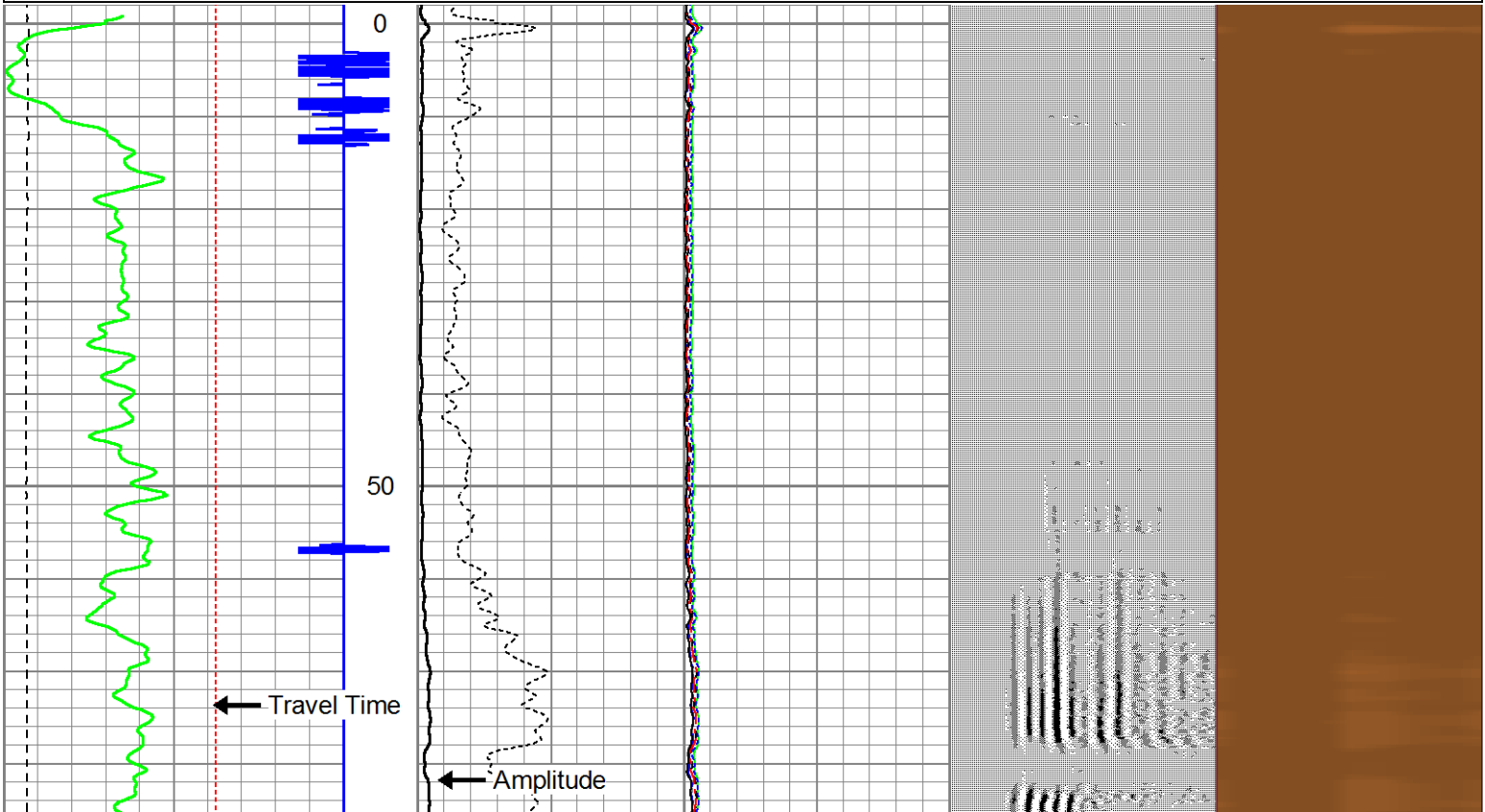
	Raw (v)	Calibrated (v)	Results
	Zero	Zero	Offset
3'	0.000	0.000	0.000
5'	0.000	0.000	0.000
SUM			
S1	0.000	0.000	0.000
S2	0.000	0.000	0.000
S3	0.000	0.000	0.000
S4	0.000	0.000	0.000
S5	0.000	0.000	0.000
S6	0.000	0.000	0.000
S7	0.000	0.000	0.000
S8	0.000	0.000	0.000

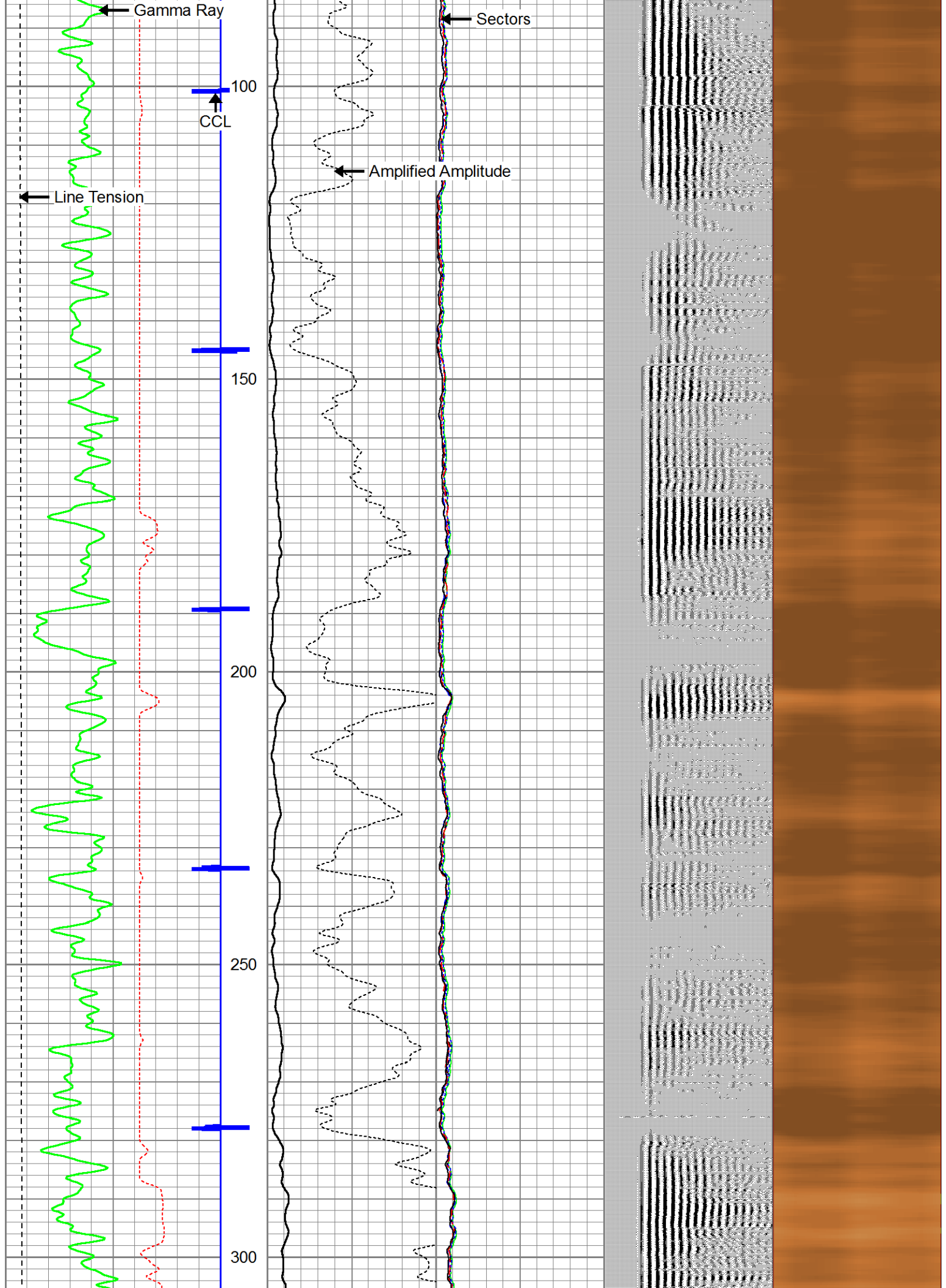


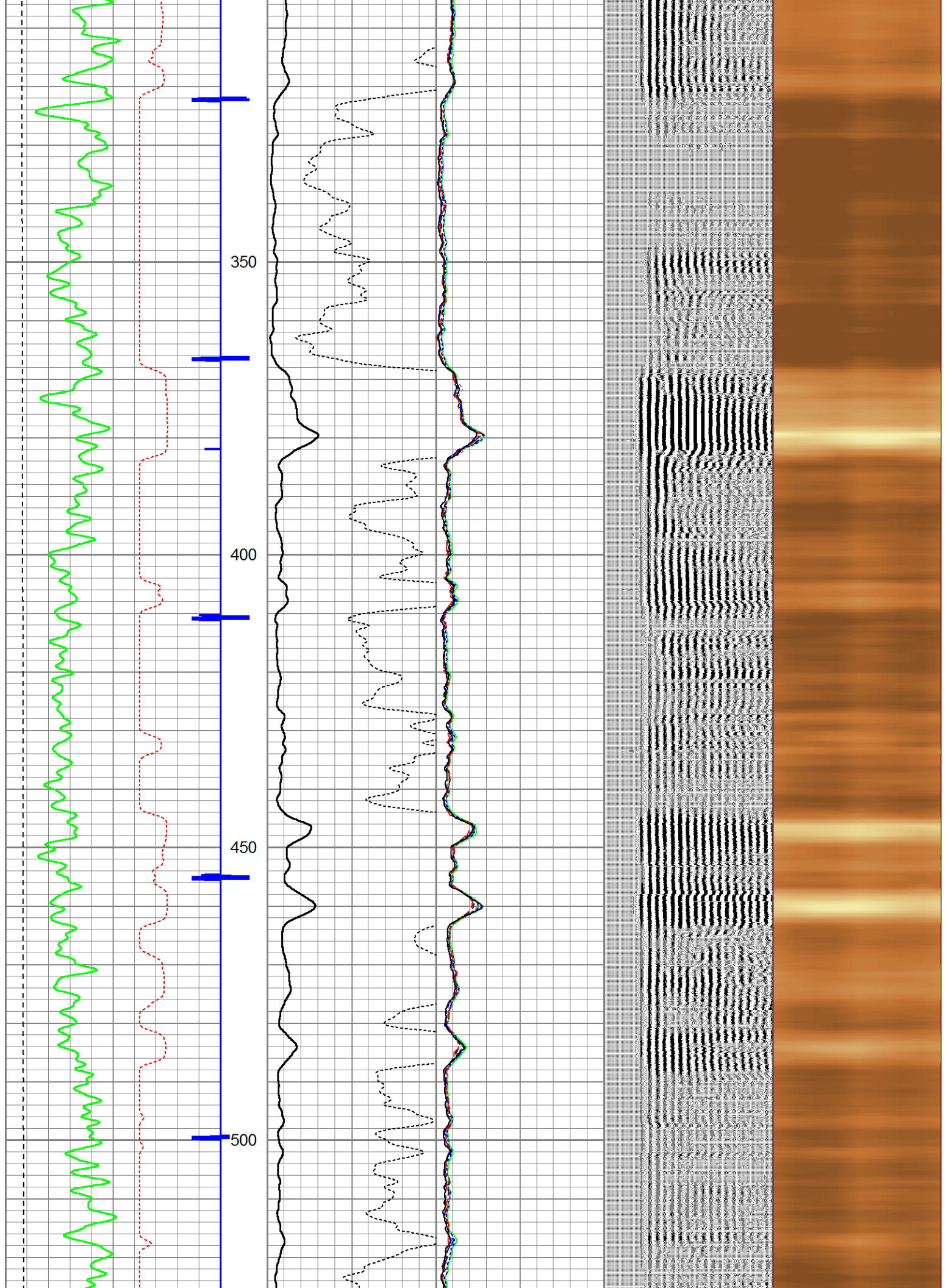
Main Pass @ 0 PSI

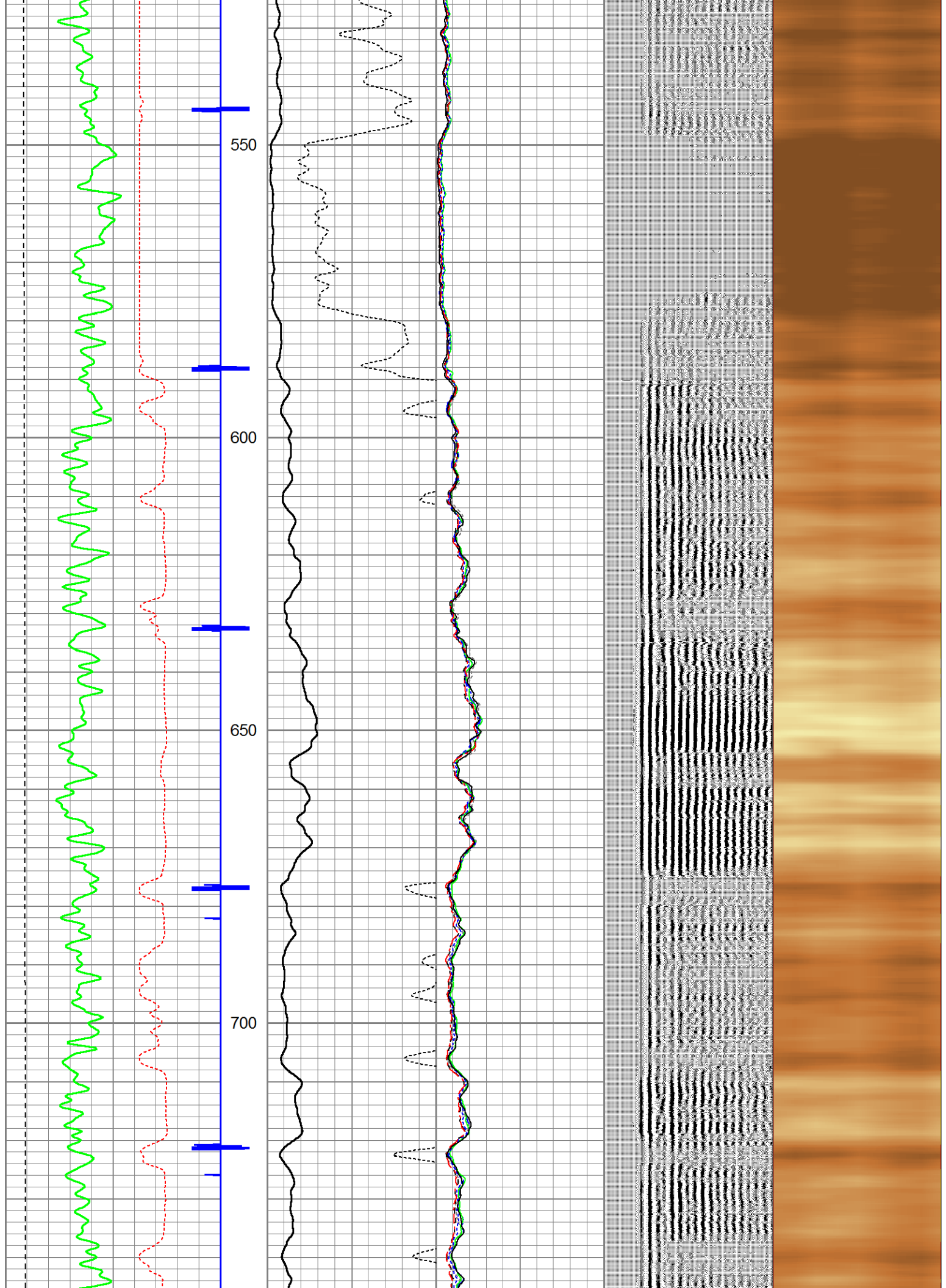
Database File: encana dowdy 32-10.db
 Dataset Pathname: pass11.1
 Presentation Format: anadarko
 Dataset Creation: Thu Aug 20 07:48:26 2015 by Calc 7.0 B1
 Charted by: Depth in Feet scaled 1:240

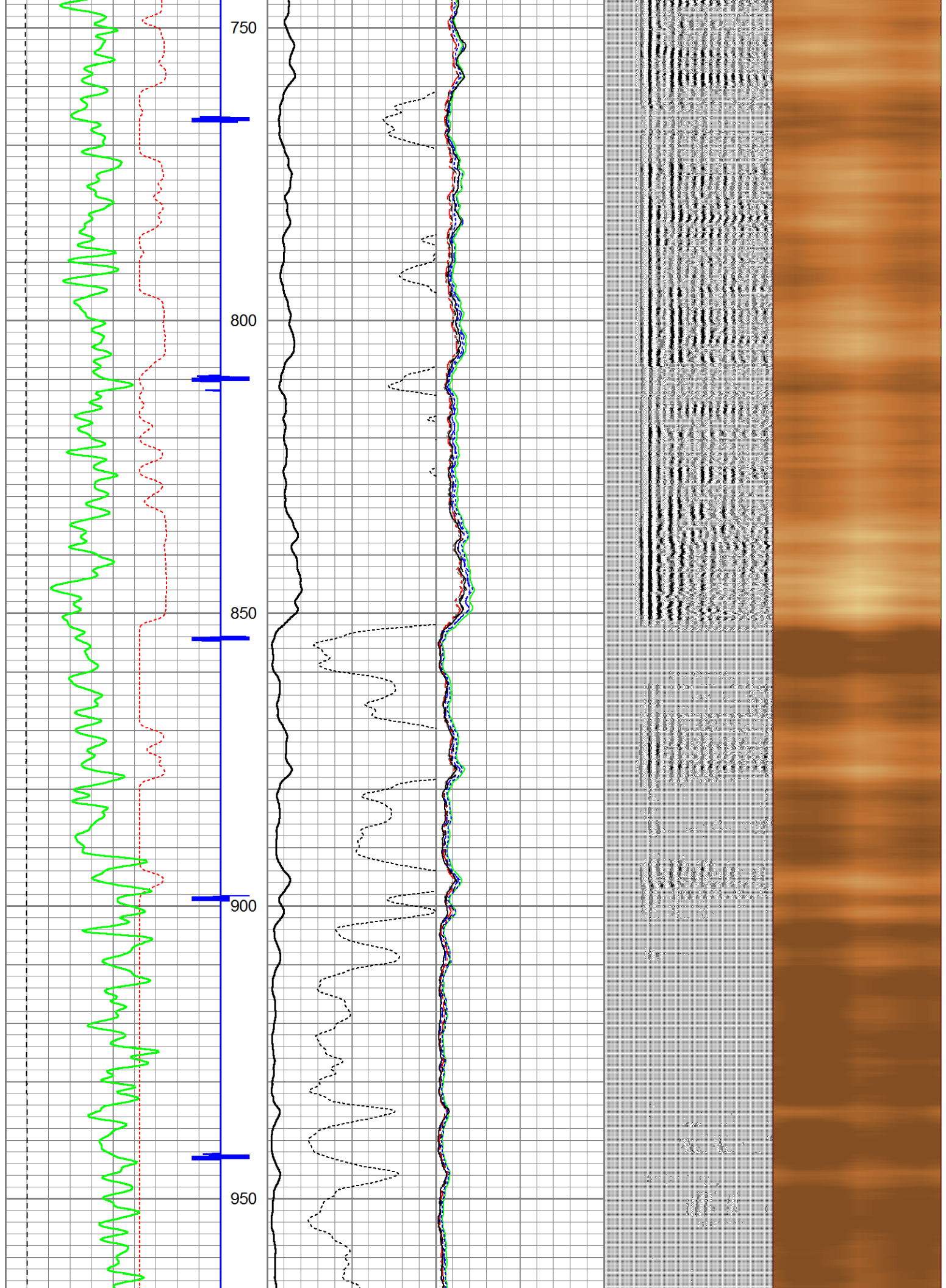
500	TT (usec)	225	0	Amplitude (mV)	100	-5	AMPS2	150	200	VDL	1200	Cement Map	
0	GR (GAPI)	150		Amplified Amplitude		-5	AMPS3	150				1	80
0	LTEN (lb)	4000	0	(mV)	10	-5	AMPS4	150					
						-5	AMPS5	150					
						-5	AMPS6	150					
						-5	AMPS7	150					
						-5	AMPS8	150					
						-5	AMPS1	150					

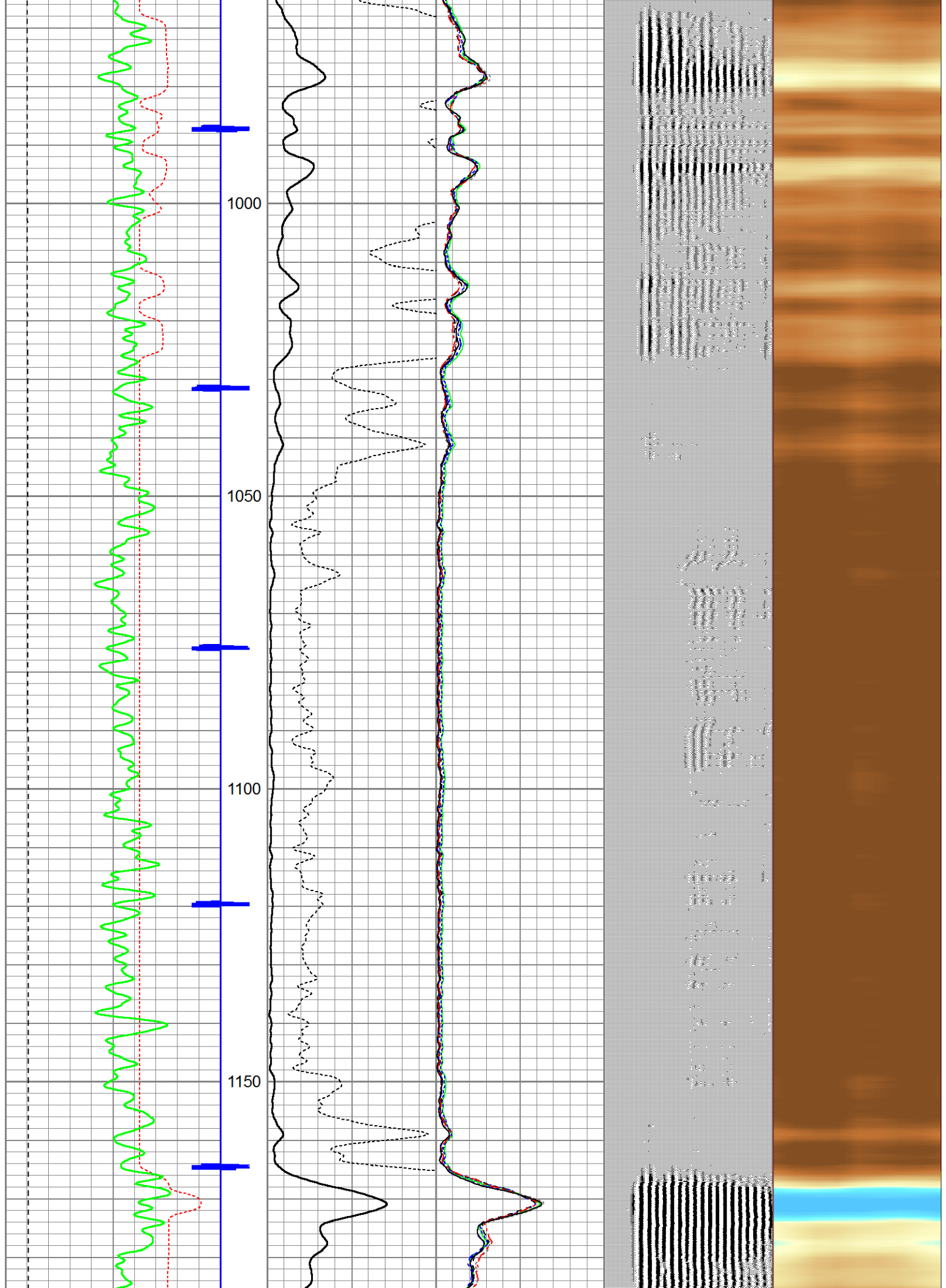


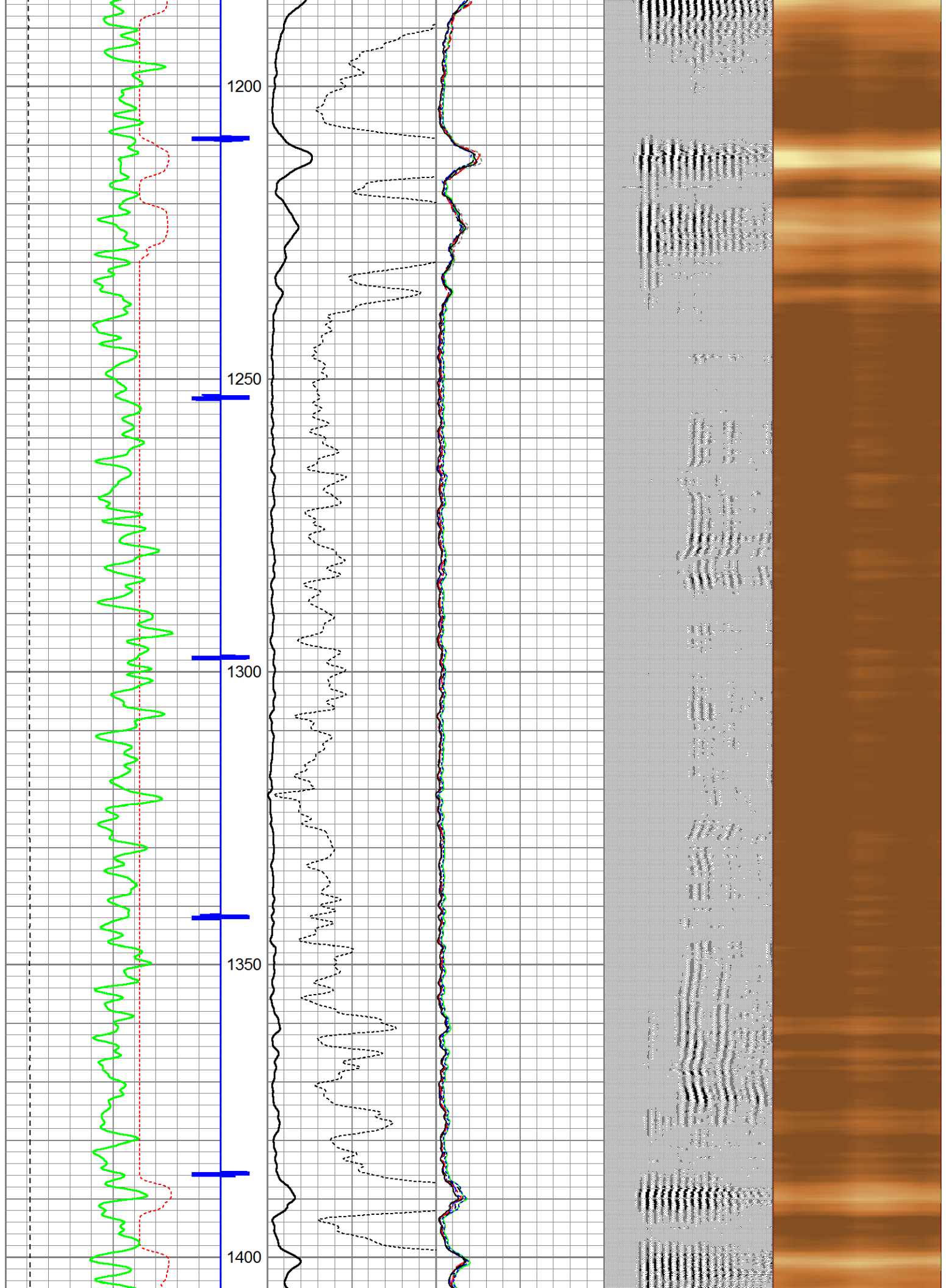


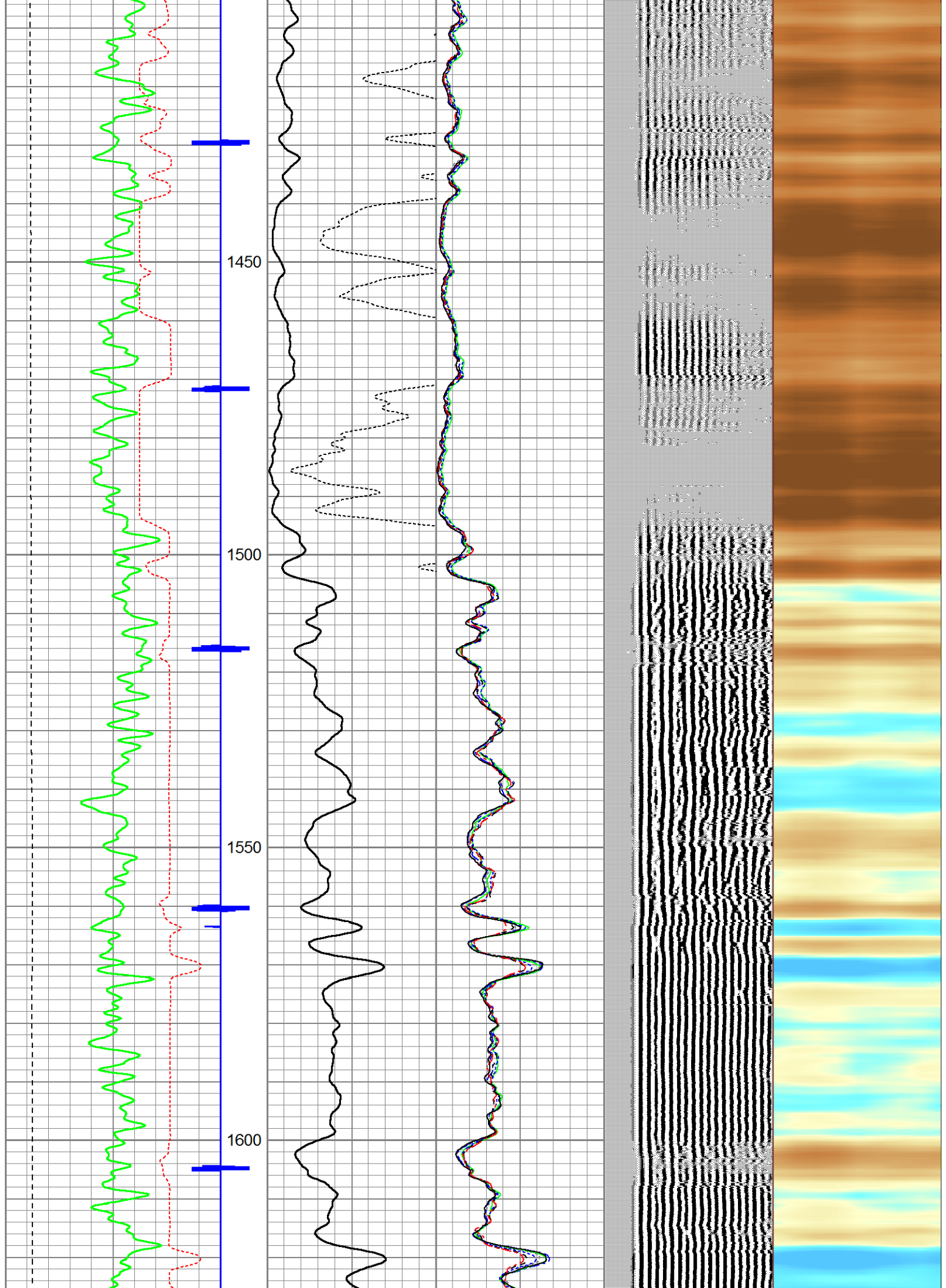


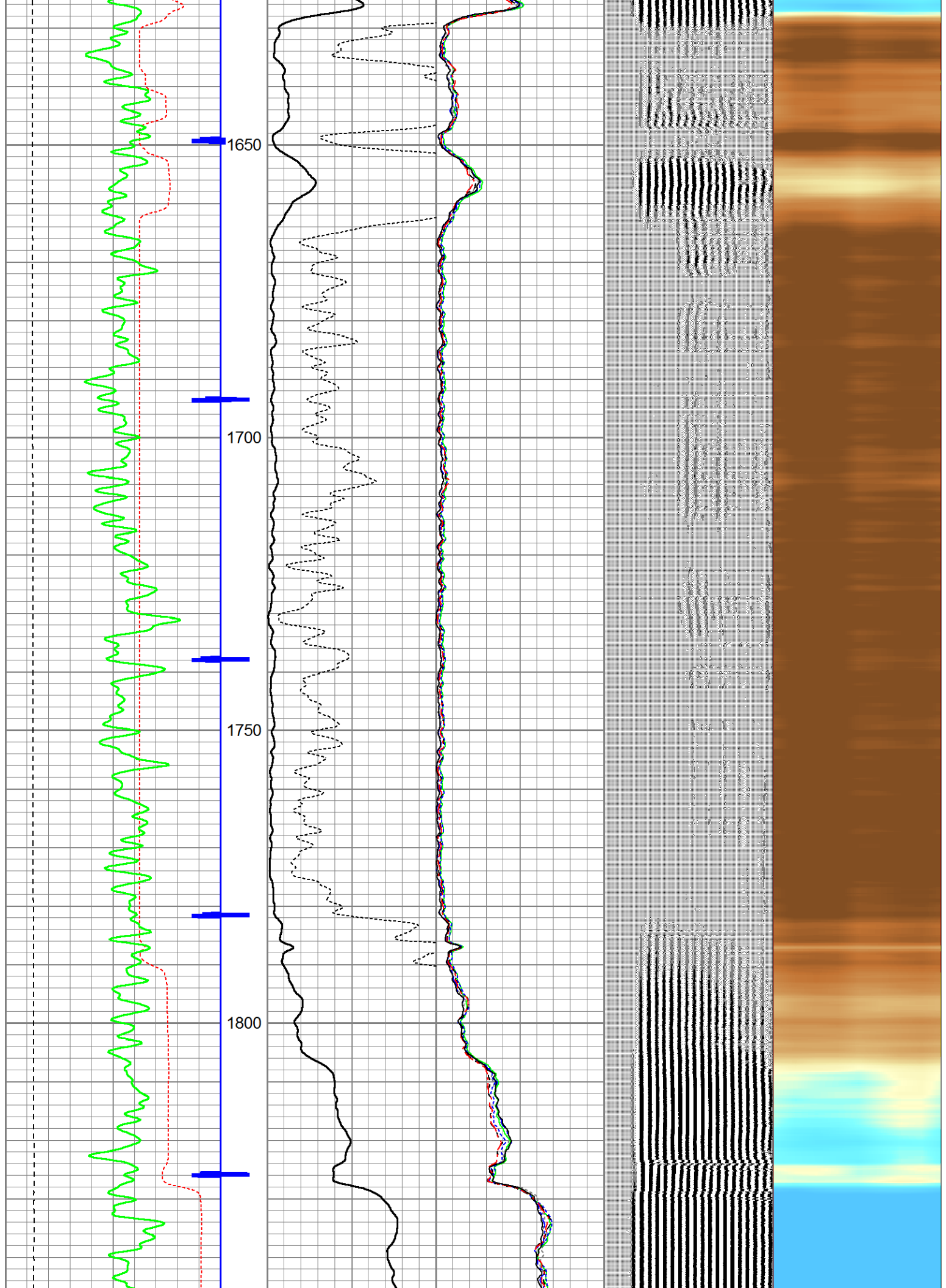


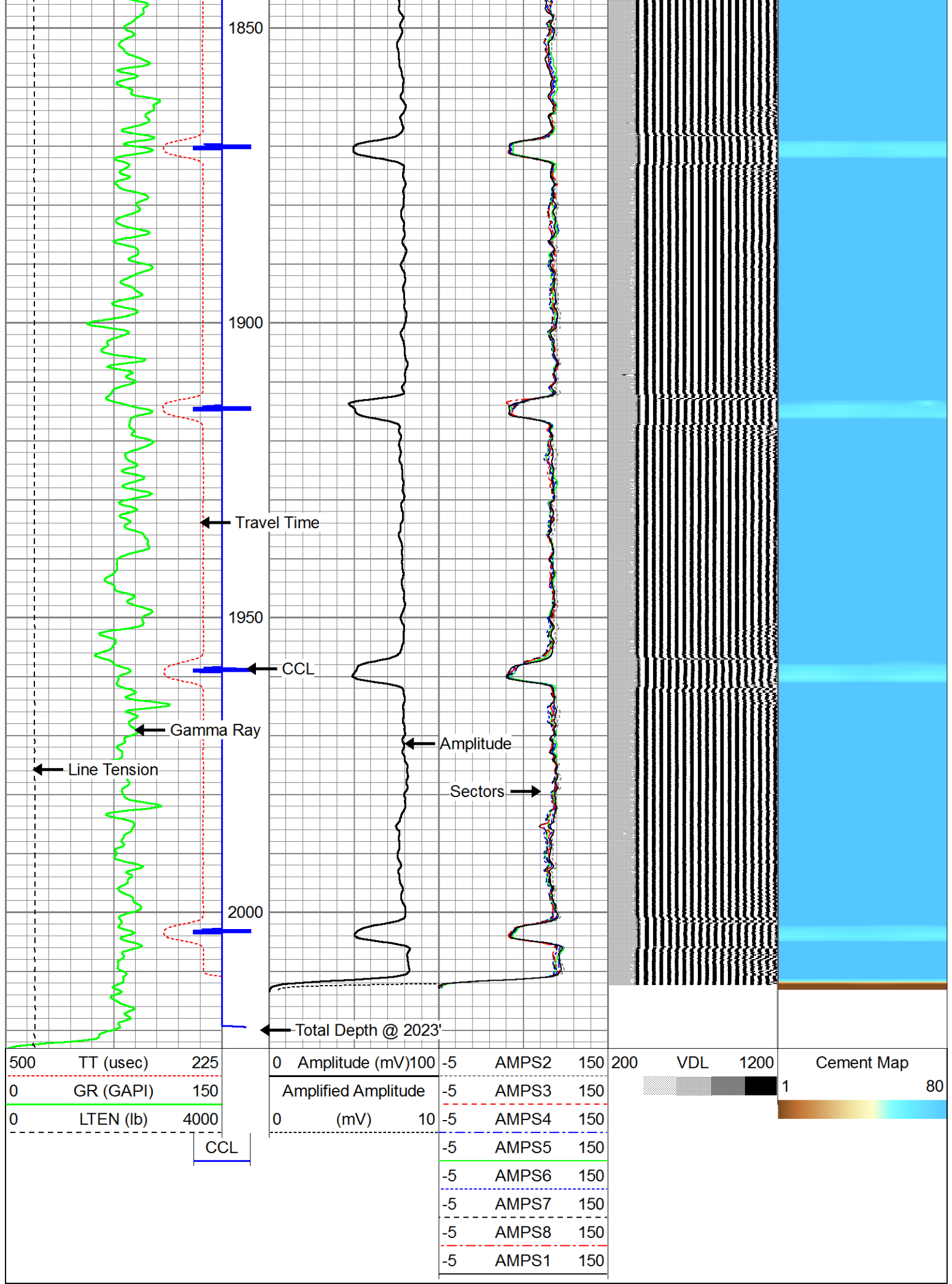






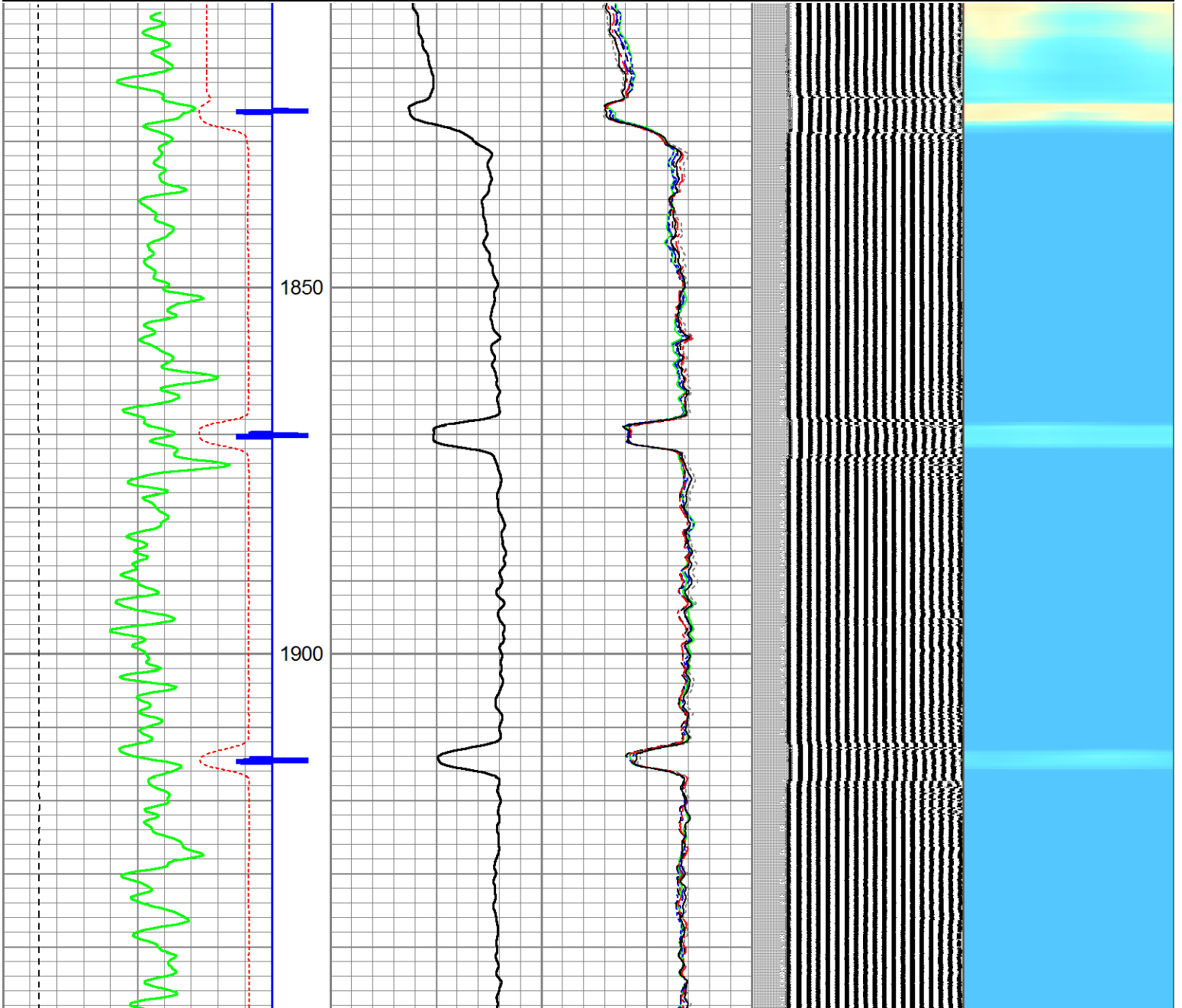


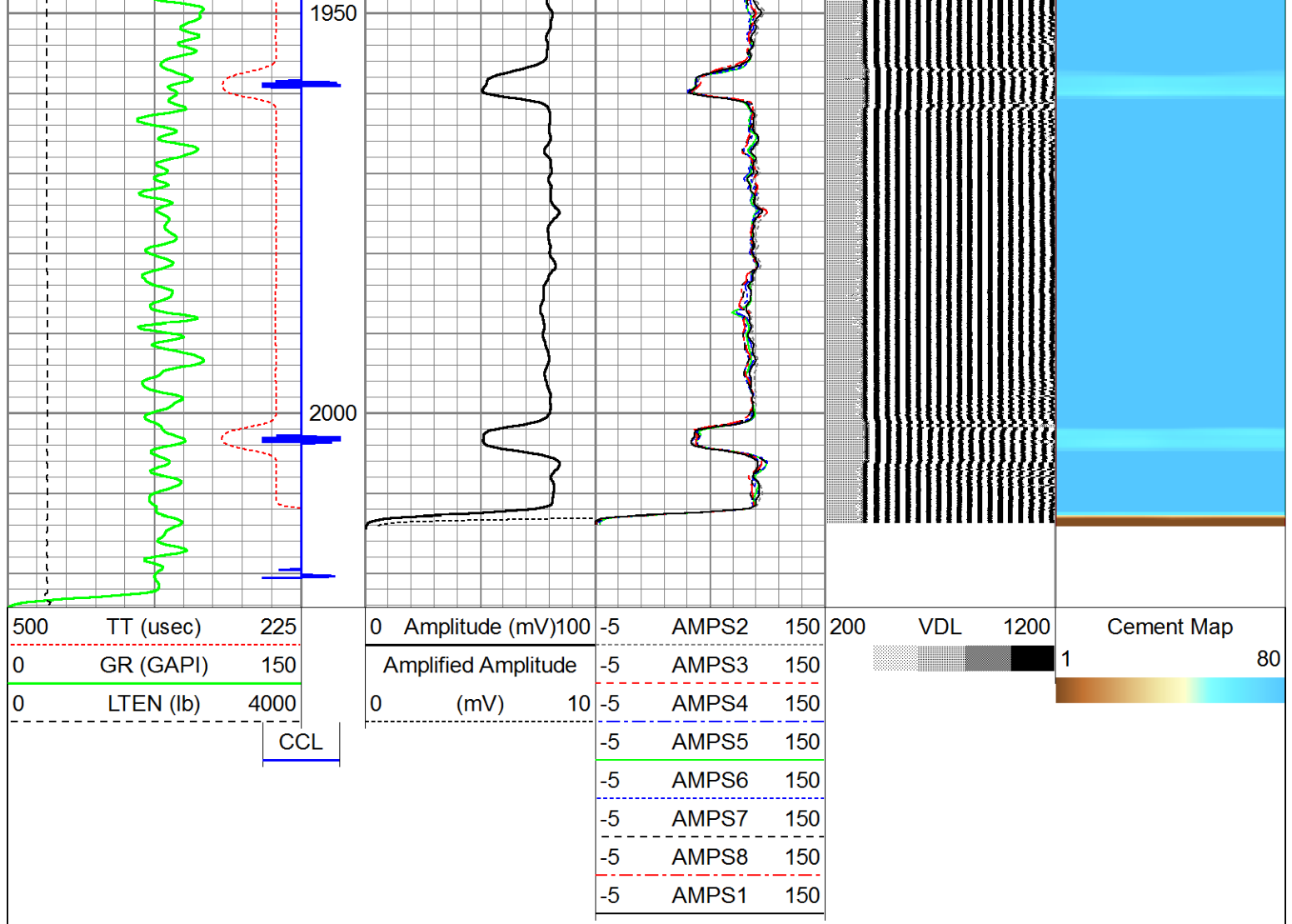




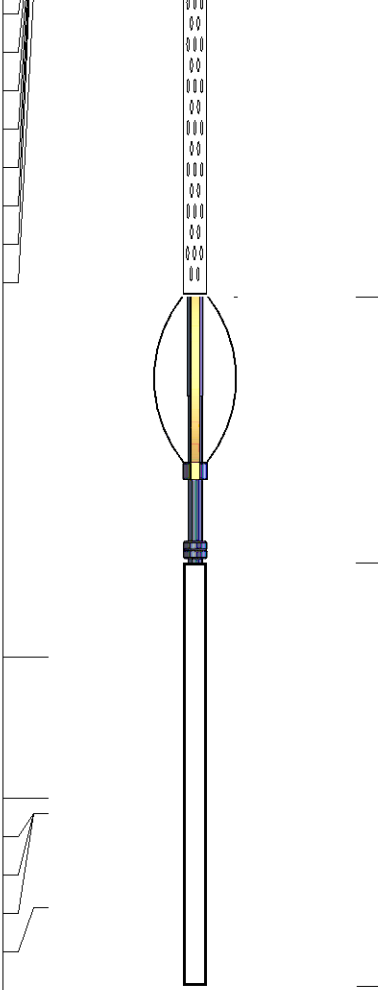
Database File: encana dowdy 32-10.db
Dataset Pathname: pass10.1
Presentation Format: anadarko
Dataset Creation: Thu Aug 20 07:49:33 2015 by Calc 7.0 B1
Charted by: Depth in Feet scaled 1:240


500	TT (usec)	225	0	Amplitude (mV)	100	-5	AMPS2	150	200	VDL	1200	Cement Map	
0	GR (GAPI)	150		Amplified Amplitude		-5	AMPS3	150				1	80
0	LTEN (lb)	4000	0	(mV)	10	-5	AMPS4	150					
						-5	AMPS5	150					
						-5	AMPS6	150					
						-5	AMPS7	150					
						-5	AMPS8	150					
						-5	AMPS1	150					





Sensor	Offset (ft)	Schematic	Description	Len (ft)	OD (in)	Wt (lb)
HEADVOLT	16.25		Standard Standard Cable Head	1.00	1.69	1.00
			PTS275	2.83	2.75	
			RBT-Probe (110217) Probe Radii Bond Tool with Digital Telemetry	8.92	2.75	90.00
WVF3FT	11.58					
WVFCAL	11.58					
WVFS1	11.58					

WVFS2	11.58		PTS275	2.83	2.75
WVFS3	11.58				
WVFS4	11.58				
WVFS5	11.58				
WVFS6	11.58				
WVFS7	11.58				
WVFS8	11.58				
WVFS5FT	10.58				
CCL	3.50				
IntTemp	2.00	GR-275D_INC (275D_with_INC) 2-3/4" GR-CCL with Inclination	4.50	2.75	
ACCX	1.83				
ACCY	1.83				
ACCZ	1.83				
GR	0.83				
Dataset: encana dowdy 32-10.db: field/well/run1/pass11.1					
Total Length: 20.08 ft					
Total Weight: 91.00 lb					
O.D. 2.75 in					

	Company	Encana Oil and Gas
	Well	Dowdy 32-10
	Field	Wattenberg
	County	Weld
	State	CO