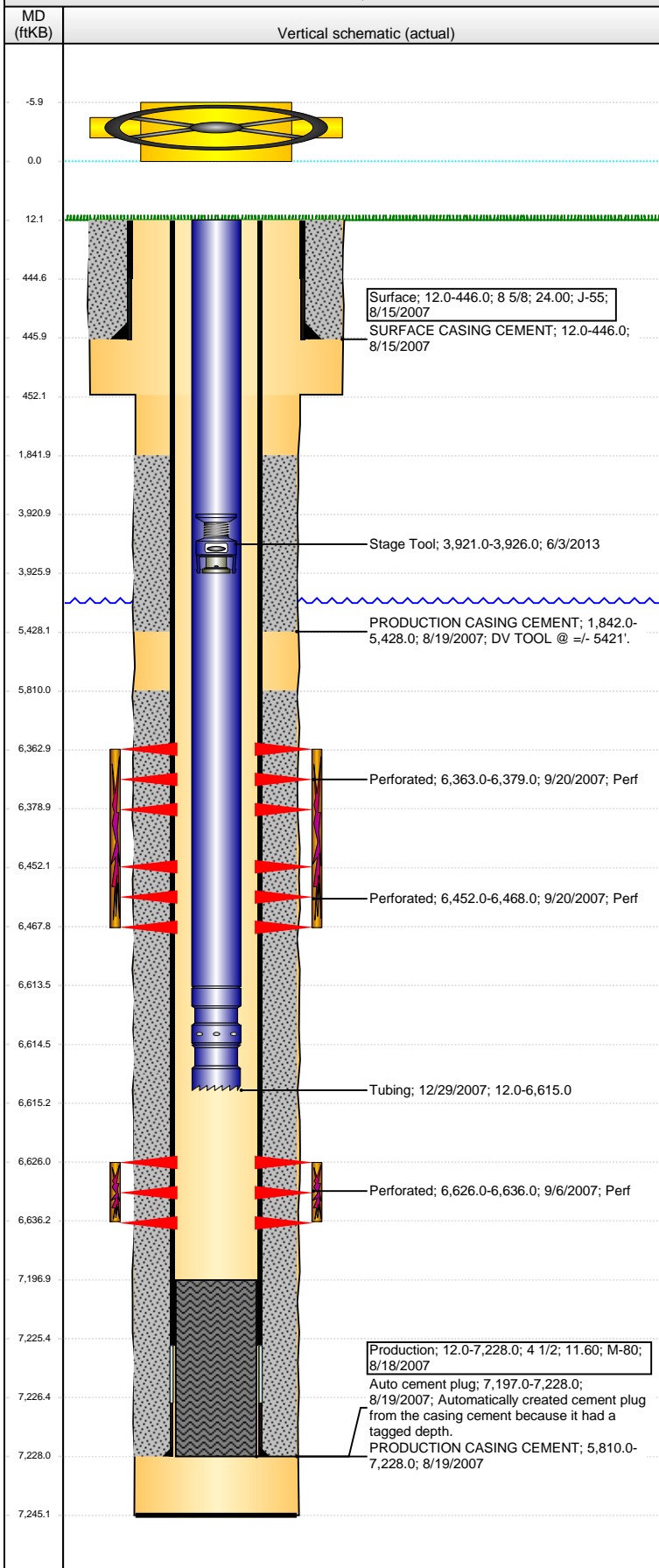


**Well Name: WELLS RANCH USX BB01-07**

VERTICAL - ORIGINAL HOLE, 1/25/2016 1:06:26 PM



Well Header							
API	05-123-26101	Business Unit	DJ BASIN	District	15	Well Config VERTICAL	
Original KB Elevation (ft)	4,713.00	KB - GL / MSL (ftKB)	12.00	Spud Date	8/14/2007	P & A Date	
Comment DV TOOL @ +/- 5421'. DRILLED OUT							
Directions To Well							
Congressional Location							
Quarter 1	Quarter 2	Quarter 3	Quarter 4	Section	Township	Twnshp N...	Range
		SW	NE	1	5 N		63 W
Bottom Hole Location							
North-South Distance (ft)		From N or S Line		East-West Distance (ft)		From E or W Line	
Plug Back Total Depths							
Date	Depth (ftKB)	Method		Com			
8/18/2007	7,204.0	CASING TALLY		FLOAT COLLAR			
9/6/2007	7,197.0	CASED HOLE LOG		DEPTH LOGGER ON CBL			
9/20/2007	6,520.0	TAG		CAST IRON FLOW THROUGH PLUG			
12/28/2007	7,245.0	TAG		PUSHED CIPF REMNANTS AND TAGGED			
Wellbore Sections							
Section Des		Size (in)	Act Top, MD (ftKB)		Act Btm, MD (ftKB)		
SURFACE		12 1/4	12.0		452.0		
PRODUCTION		7 7/8	452.0		7,245.0		
Zone Statuses							
Zone Name	Status Date	Status	Fluid Type	Job	Prod Method		
CODELL	9/23/2007	PR		DRILLING/CO...			
NIOBRARA	9/23/2007	PR		DRILLING/CO...			
Casing Strings							
Surface, 446.0ftKB							
Casing Description	Run Date	OD (in)	Wt/Len (l...)	Grade	Top, MD (ft...)	MD (ftKB)	
Surface	8/15/2007	8 5/8	24.00	J-55	12.0	446.0	
Production, 7,228.0ftKB							
Casing Description	Run Date	OD (in)	Wt/Len (l...)	Grade	Top, MD (ft...)	MD (ftKB)	
Production	8/18/2007	4 1/2	11.60	M-80	12.0	7,228.0	
Cement							
Description					Top Depth (ftKB)	Bottom Depth (ftKB)	
SURFACE CASING CEMENT					12.0	446.0	
Description					Top Depth (ftKB)	Bottom Depth (ftKB)	
PRODUCTION CASING CEMENT					1,842.0	5,428.0	
Description					Top Depth (ftKB)	Bottom Depth (ftKB)	
PRODUCTION CASING CEMENT					5,810.0	7,228.0	
Tubing Strings							
Tubing Description	Run Date	String...	ID (in)	Wt (lb/ft)	Grade	Len (ft)	Set De...
Tubing	12/29/2007	7	2 3/8	1.995	4.70	J-55	6,603.00
Tubing Components							
Item Des	OD (in)	Wt (lb/ft)	Grade	Jts	Len (ft)	Btm (ftKB)	Btm (TVD) (ftKB)
EUE 8rd Tubing	2 3/8	4.70	J-55	212	6,601.50	6,613.5	
Pump Seating Nipple	2 3/8	1.10			1.00	6,614.5	
Notched collar	2 3/8				0.50	6,615.0	
Perforation Data							
Zone	Bnch/St g	Entered Shot Total	Top (ftKB)	Btm (ftKB)	Date		
NIOBRARA, ORIGINAL HOLE		64	6,363.00	6,379.00	9/20/2007		
NIOBRARA, ORIGINAL HOLE		64	6,452.00	6,468.00	9/20/2007		
CODELL, ORIGINAL HOLE		40	6,626.00	6,636.00	9/6/2007		
Stimulations & Treatments							
Date	Zone	Primary Job Type					
9/20/2007	NIOBRARA, ORIGINAL HOLE	DRILLING/COMPLETION - ORIGINAL					
Technical Result		Tech Result Details			Tech Result Note		
Comment							

**Well Name: WELLS RANCH USX BB01-07**

VERTICAL - ORIGINAL HOLE, 1/25/2016 1:06:28 PM

### Stimulations & Treatments

Date	9/20/2007	Zone	CODELL, ORIGINAL HOLE	Primary Job Type	DRILLING/COMPLETION - ORIGINAL
Technical Result	Tech Result Details		Tech Result Note		
Comment					

### Other In Hole

Run Date	Des	OD (in)	Top (ftKB)	Btm (ftKB)
6/3/2013	Stage Tool	2	3,921.0	3,926.0

### Logs

Date	Type	Top, MD (ftKB)	Btm, MD (ftKB)
8/18/2007	COMPENSATED DENSITY	2,540.0	7,225.0
8/18/2007	INDUCTION	446.0	7,245.0
9/6/2007	CEMENT BOND	5,610.0	7,195.0
10/8/2014	GYRO	10.0	6,300.0

