

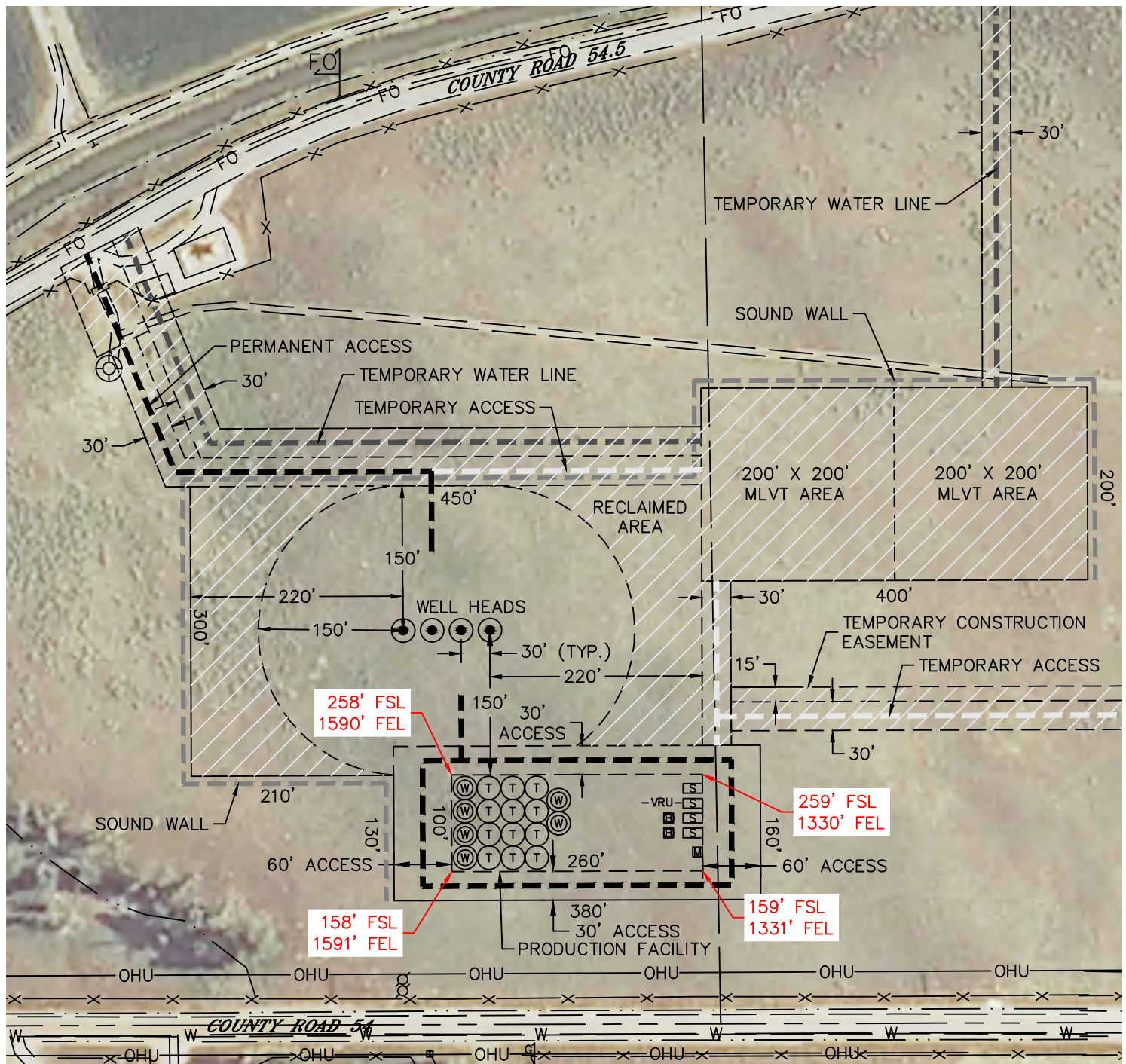


Lat40°, Inc. 6250 W. 10th Street, Unit 2, Greeley, CO 970-515-5294

PROPOSED SCALED FACILITY DRAWING

SCHNEIDER 19Q-HZ PAD

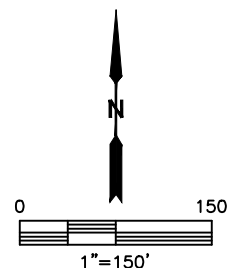
SECTION: 19
TOWNSHIP: 5N
RANGE: 64W



LEGEND

- PROPOSED WELL HEAD
- TANK BATTERY
- WATER TANK
- WATER VAULT
- SEPARATOR
- BURNER
- METER
- VRU- VAPOR RECOVERY UNIT

TOTAL DISTURBED AREA OF LOCATION: ±9.6 ACRES
TOTAL SIZE OF LOCATION AFTER RECLAMATION: ±4.0 ACRES



DATE: 1/13/2016
PROJECT#: 2013130