

LEGEND

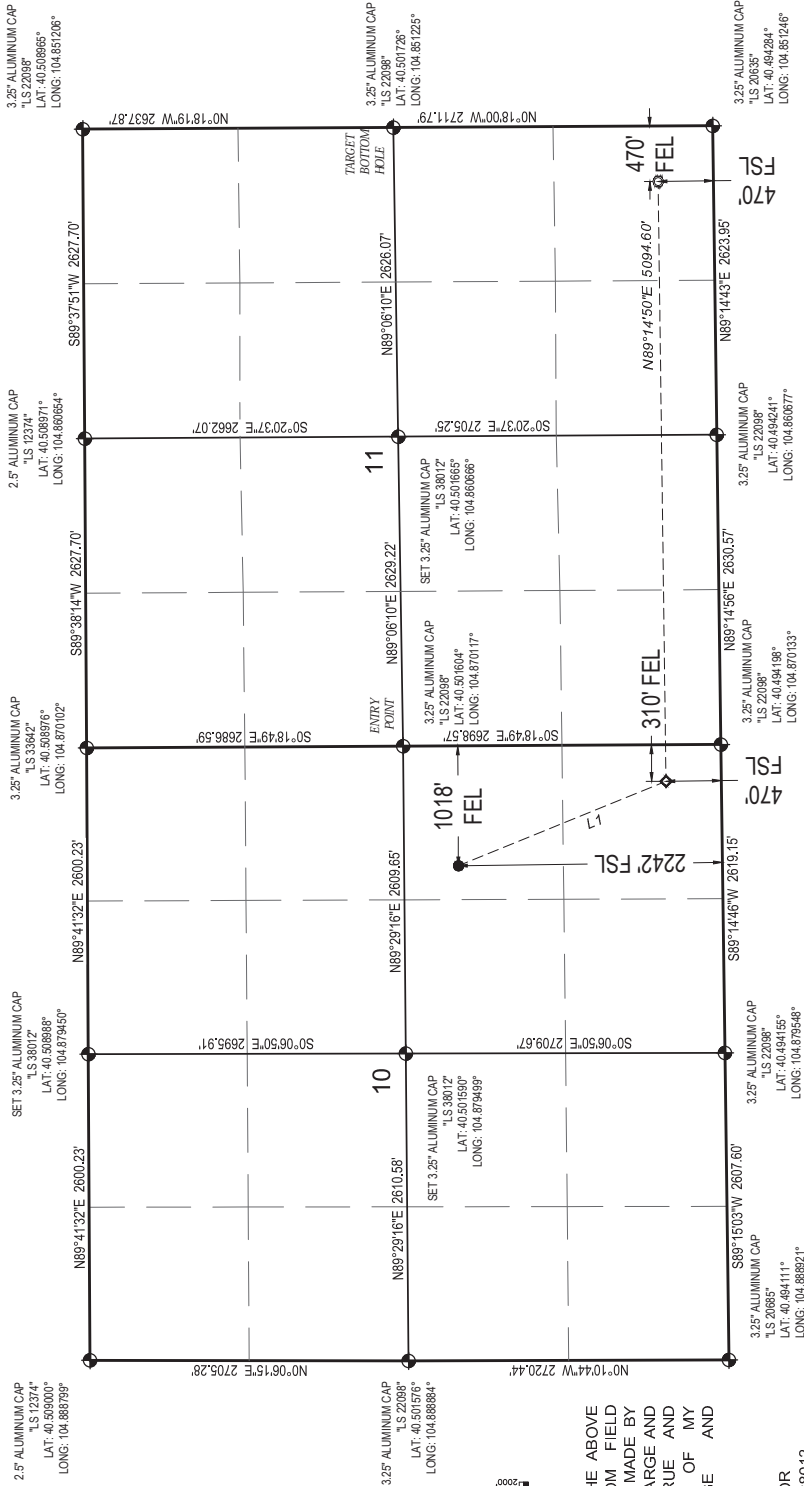
- PROPOSED WELLHEAD
- ◆ ENTRY POINT
- TARGET BOTTOM HOLE
- ⊕ SECTION CORNER

NOTE: UNITS SHOWN ARE IN U.S. SURVEY FEET AS MEASURED ON GROUND. LATITUDE AND LONGITUDE IS SHOWN BASED UPON COLORADO NORTH ZONE STATE PLANE (NAD83).

T6N, R67W, 6TH P.M.

LINE TABLE

LINE	DIRECTION	LENGTH
L1	S22°09'10"E	1903.20'



CERTIFICATE

THIS IS TO CERTIFY THAT THE ABOVE PLAN WAS PREPARED FROM FIELD NOTES OF ACTUAL SURVEYS MADE BY ME OR UNDER MY DIRECT CHARGE AND THAT THE SAME ARE TRUE AND CORRECT TO THE BEST OF MY PROFESSIONAL KNOWLEDGE AND BELIEF.

DANAL L. SPERLING
PROFESSIONAL LAND SURVEYOR
COLORADO LICENSE NUMBER 38012



BASIS OF BEARINGS
BASIS OF BEARINGS IS A G.P.S. OBSERVATION

BASIS OF ELEVATION
PUBLISHED VALUES OF NGS CONTROL STATION "Q 136" WITH AN ELEVATION OF 4768 FEET (NAVD 88)



NAD 83 (TARGET BOTTOM HOLE)	LATITUDE = 40°29'44.04" (40.495567°)
	LONGITUDE = 104°51'10.56" (104.852932°)
NAD 27 (TARGET BOTTOM HOLE)	LATITUDE = 40°29'44.11" (40.495585°)
	LONGITUDE = 104°51'08.66" (104.852406°)
NAD 83 (ENTRY POINT)	LATITUDE = 40°29'43.74" (40.495483°)
	LONGITUDE = 104°52'16.48" (104.871245°)
NAD 27 (ENTRY POINT)	LATITUDE = 40°29'43.81" (40.495502°)
	LONGITUDE = 104°52'14.58" (104.870718°)
NAD 83 (SURFACE LOCATION)	LATITUDE = 40°30'01.21" (40.500336°)
	LONGITUDE = 104°52'25.61" (104.873781°)
NAD 27 (SURFACE LOCATION)	LATITUDE = 40°30'01.28" (40.500354°)
	LONGITUDE = 104°52'23.71" (104.873253°)

BOWER FD 11-362HC
ELEV. UNGRADED GROUND: 4876.8'

PDOP = 1.4

GREAT WESTERN OIL & GAS COMPANY

BOWER FD 11-362HC
NE1/4, SE1/4, SECTION 10, T6N, R67W, 6TH P.M.
WELD COUNTY, COLORADO

SURVEYED BY: Dana L. Sperling and J.S.	DATE: 05.21.15
DRAWN BY: LHG	DATE DRAWN: 05.26.2015
SCALE: 1" = 1000'	REVISED: 06.11.2015
WELL LOCATION PLAT	