



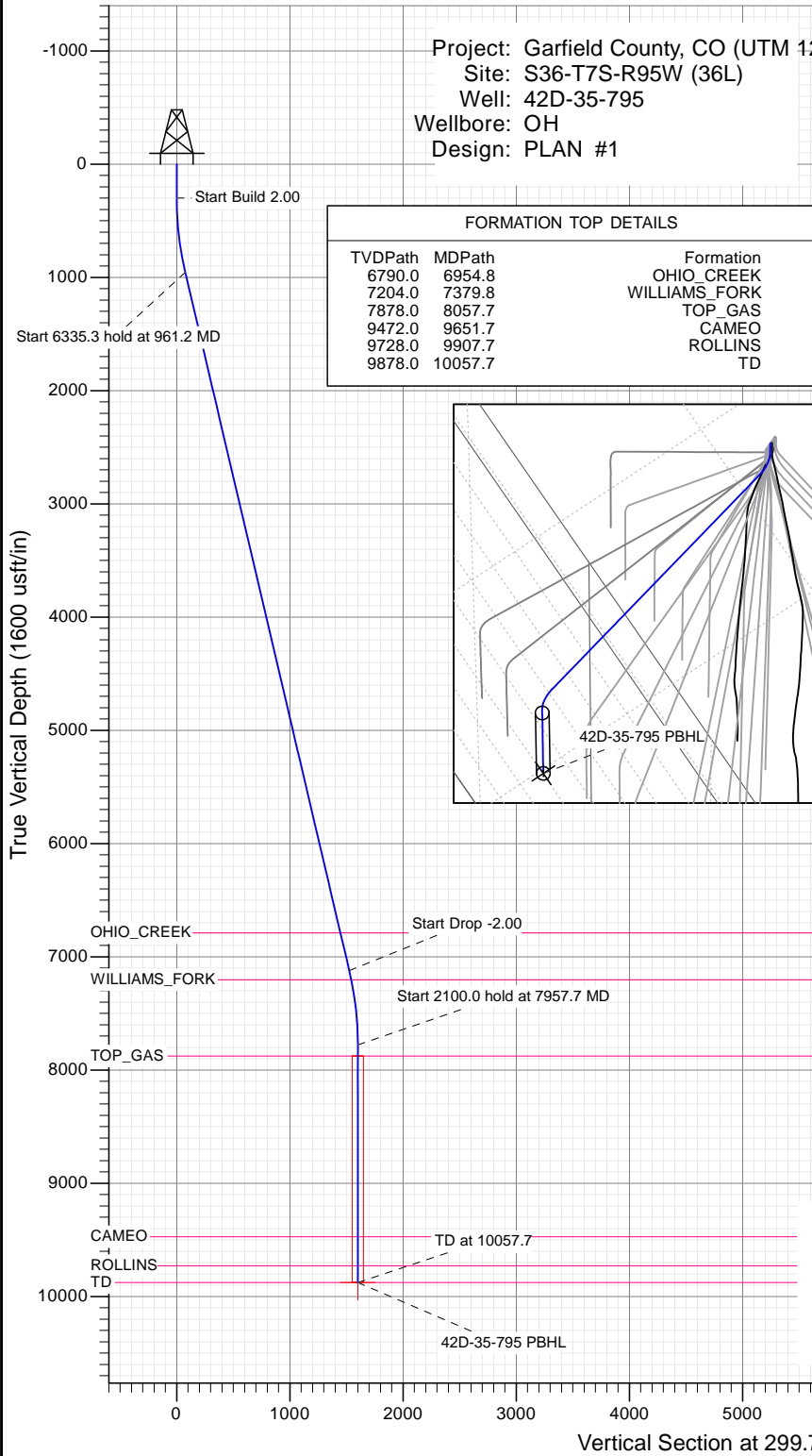
SECTION DETAILS

Sec	MD	Inc	Azi	TVD	+N/-S	+E/-W	Dleg	TFace	VSect	Target
1	0.0	0.00	0.00	0.0	0.0	0.0	0.00	0.00	0.0	
2	300.0	0.00	0.00	300.0	0.0	0.0	0.00	0.00	0.0	
3	961.2	13.22	299.74	955.3	37.7	-66.0	2.00	299.74	76.0	
4	7296.5	13.22	299.74	7122.7	756.5	-1324.3	0.00	0.00	1525.2	
5	7957.7	0.00	0.00	7778.0	794.2	-1390.3	2.00	180.00	1601.1	
6	10057.7	0.00	0.00	9878.0	794.2	-1390.3	0.00	0.00	1601.1	42D-35-795 PBHL

Project: Garfield County, CO (UTM 12
 Site: S36-T7S-R95W (36L)
 Well: 42D-35-795
 Wellbore: OH
 Design: PLAN #1

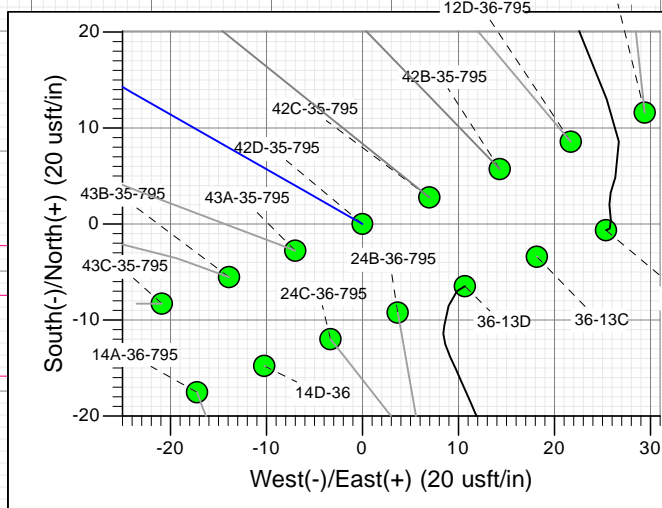
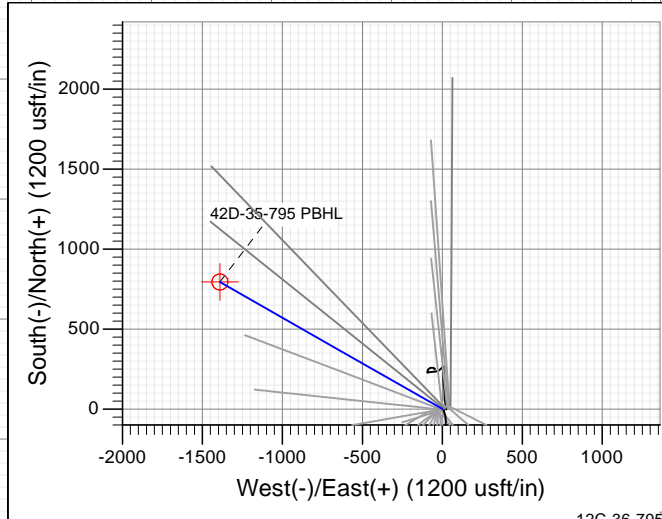
PLAN #1
 42D-35-795
 15XXX LR
 30' KB @ 8931.0usft
 Ground Level @ 8901.0
 NAD 1927 - Western US
 Well 42D-35-795, True North

Type	Target	Azimuth	Origin	N/S	E/W	From
TD	No Target (Freehand)	299.74	Slot	0.0	0.0	TVD
Name		TVD	+N/-S	+E/-W	Latitude	Longitude
42D-35-795 PBHL		9878.0	794.2	-1390.3	39.394339	-107.957224



FORMATION TOP DETAILS

TVDPath	MDPath	Formation
6790.0	6954.8	OHIO_CREEK
7204.0	7379.8	WILLIAMS_FORK
7878.0	8057.7	TOP_GAS
9472.0	9651.7	CAMEO
9728.0	9907.7	ROLLINS
9878.0	10057.7	TD



T M
 Azimuths to True North
 Magnetic North: 9.42°
 Magnetic Field
 Strength: 51881.2snT
 Dip Angle: 65.60°
 Date: 12/14/2015
 Model: HDGM

CASING DETAILS
 No casing data is available



WELL DETAILS: 42D-35-795

+N/-S	+E/-W	Northing	Ground Level:	8901.0
0.0	0.0	14319263.20	Easting	2501547.50
			Latitude	39.392160
			Longitude	-107.952307

Planning Report

Database: USA EDM 5000 Multi Users DB	Local Co-ordinate Reference: Well 42D-35-795
Company: Caerus Oil & Gas	TVD Reference: 30' KB @ 8931.0usft
Project: Garfield County, CO (UTM 12N)	MD Reference: 30' KB @ 8931.0usft
Site: S36-T7S-R95W (36L)	North Reference: True
Well: 42D-35-795	Survey Calculation Method: Minimum Curvature
Wellbore: OH	
Design: PLAN #1	

Project Garfield County, CO (UTM 12N)			
Map System: Universal Transverse Mercator (US Survey Feet)	System Datum: Mean Sea Level		
Geo Datum: NAD 1927 - Western US			
Map Zone: Zone 12N (114 W to 108 W)			

Site S36-T7S-R95W (36L)			
Site Position:	Northing: 14,319,276.10 usft	Latitude: 39.392190	
From: Map	Easting: 2,501,602.10 usft	Longitude: -107.952113	
Position Uncertainty: 0.0 usft	Slot Radius: 13-3/16"	Grid Convergence: 1.94 °	

Well 42D-35-795			
Well Position	+N/-S 0.0 usft	Northing: 14,319,263.20 usft	Latitude: 39.392160
	+E/-W 0.0 usft	Easting: 2,501,547.50 usft	Longitude: -107.952307
Position Uncertainty	0.0 usft	Wellhead Elevation: 0.0 usft	Ground Level: 8,901.0 usft

Wellbore OH					
Magnetics	Model Name	Sample Date	Declination (°)	Dip Angle (°)	Field Strength (nT)
	HDGM	12/14/2015	9.42	65.60	51,881

Design PLAN #1				
Audit Notes:				
Version:	Phase: PLAN	Tie On Depth: 0.0		
Vertical Section:	Depth From (TVD) (usft)	+N/-S (usft)	+E/-W (usft)	Direction (°)
	0.0	0.0	0.0	299.74

Plan Sections										
Measured Depth (usft)	Inclination (°)	Azimuth (°)	Vertical Depth (usft)	+N/-S (usft)	+E/-W (usft)	Dogleg Rate (°/100usft)	Build Rate (°/100usft)	Turn Rate (°/100usft)	TFO (°)	Target
0.0	0.00	0.00	0.0	0.0	0.0	0.00	0.00	0.00	0.00	
300.0	0.00	0.00	300.0	0.0	0.0	0.00	0.00	0.00	0.00	
961.2	13.22	299.74	955.3	37.7	-66.0	2.00	2.00	0.00	299.74	
7,296.5	13.22	299.74	7,122.7	756.5	-1,324.3	0.00	0.00	0.00	0.00	
7,957.7	0.00	0.00	7,778.0	794.2	-1,390.3	2.00	-2.00	0.00	180.00	
10,057.7	0.00	0.00	9,878.0	794.2	-1,390.3	0.00	0.00	0.00	0.00	42D-35-795 PBHL

Planning Report

Database:	USA EDM 5000 Multi Users DB	Local Co-ordinate Reference:	Well 42D-35-795
Company:	Caerus Oil & Gas	TVD Reference:	30' KB @ 8931.0usft
Project:	Garfield County, CO (UTM 12N)	MD Reference:	30' KB @ 8931.0usft
Site:	S36-T7S-R95W (36L)	North Reference:	True
Well:	42D-35-795	Survey Calculation Method:	Minimum Curvature
Wellbore:	OH		
Design:	PLAN #1		

Planned Survey									
Measured Depth (usft)	Inclination (°)	Azimuth (°)	Vertical Depth (usft)	+N/-S (usft)	+E/-W (usft)	Vertical Section (usft)	Dogleg Rate (°/100usft)	Build Rate (°/100u)	Comments / Formations
0.0	0.00	0.00	0.0	0.0	0.0	0.0	0.00	0.00	
100.0	0.00	0.00	100.0	0.0	0.0	0.0	0.00	0.00	
200.0	0.00	0.00	200.0	0.0	0.0	0.0	0.00	0.00	
300.0	0.00	0.00	300.0	0.0	0.0	0.0	0.00	0.00	Start Build 2.00
400.0	2.00	299.74	400.0	0.9	-1.5	1.7	2.00	2.00	
500.0	4.00	299.74	499.8	3.5	-6.1	7.0	2.00	2.00	
600.0	6.00	299.74	599.5	7.8	-13.6	15.7	2.00	2.00	
700.0	8.00	299.74	698.7	13.8	-24.2	27.9	2.00	2.00	
800.0	10.00	299.74	797.5	21.6	-37.8	43.5	2.00	2.00	
900.0	12.00	299.74	895.6	31.1	-54.4	62.6	2.00	2.00	
961.2	13.22	299.74	955.3	37.7	-66.0	76.0	2.00	2.00	Start 6335.3 hold at 961.2 MD
1,000.0	13.22	299.74	993.1	42.1	-73.7	84.8	0.00	0.00	
1,100.0	13.22	299.74	1,090.5	53.4	-93.5	107.7	0.00	0.00	
1,200.0	13.22	299.74	1,187.8	64.8	-113.4	130.6	0.00	0.00	
1,300.0	13.22	299.74	1,285.2	76.1	-133.3	153.5	0.00	0.00	
1,400.0	13.22	299.74	1,382.5	87.5	-153.1	176.3	0.00	0.00	
1,500.0	13.22	299.74	1,479.9	98.8	-173.0	199.2	0.00	0.00	
1,600.0	13.22	299.74	1,577.2	110.2	-192.8	222.1	0.00	0.00	
1,700.0	13.22	299.74	1,674.6	121.5	-212.7	245.0	0.00	0.00	
1,800.0	13.22	299.74	1,771.9	132.9	-232.6	267.8	0.00	0.00	
1,900.0	13.22	299.74	1,869.2	144.2	-252.4	290.7	0.00	0.00	
2,000.0	13.22	299.74	1,966.6	155.5	-272.3	313.6	0.00	0.00	
2,100.0	13.22	299.74	2,063.9	166.9	-292.2	336.5	0.00	0.00	
2,200.0	13.22	299.74	2,161.3	178.2	-312.0	359.3	0.00	0.00	
2,300.0	13.22	299.74	2,258.6	189.6	-331.9	382.2	0.00	0.00	
2,400.0	13.22	299.74	2,356.0	200.9	-351.7	405.1	0.00	0.00	
2,500.0	13.22	299.74	2,453.3	212.3	-371.6	428.0	0.00	0.00	
2,600.0	13.22	299.74	2,550.7	223.6	-391.5	450.8	0.00	0.00	
2,700.0	13.22	299.74	2,648.0	235.0	-411.3	473.7	0.00	0.00	
2,800.0	13.22	299.74	2,745.4	246.3	-431.2	496.6	0.00	0.00	
2,900.0	13.22	299.74	2,842.7	257.7	-451.1	519.5	0.00	0.00	
3,000.0	13.22	299.74	2,940.1	269.0	-470.9	542.3	0.00	0.00	
3,100.0	13.22	299.74	3,037.4	280.4	-490.8	565.2	0.00	0.00	
3,200.0	13.22	299.74	3,134.8	291.7	-510.6	588.1	0.00	0.00	
3,300.0	13.22	299.74	3,232.1	303.1	-530.5	611.0	0.00	0.00	
3,400.0	13.22	299.74	3,329.5	314.4	-550.4	633.8	0.00	0.00	
3,500.0	13.22	299.74	3,426.8	325.7	-570.2	656.7	0.00	0.00	
3,600.0	13.22	299.74	3,524.2	337.1	-590.1	679.6	0.00	0.00	
3,700.0	13.22	299.74	3,621.5	348.4	-610.0	702.5	0.00	0.00	
3,800.0	13.22	299.74	3,718.9	359.8	-629.8	725.3	0.00	0.00	
3,900.0	13.22	299.74	3,816.2	371.1	-649.7	748.2	0.00	0.00	
4,000.0	13.22	299.74	3,913.6	382.5	-669.5	771.1	0.00	0.00	
4,100.0	13.22	299.74	4,010.9	393.8	-689.4	794.0	0.00	0.00	
4,200.0	13.22	299.74	4,108.3	405.2	-709.3	816.8	0.00	0.00	
4,300.0	13.22	299.74	4,205.6	416.5	-729.1	839.7	0.00	0.00	
4,400.0	13.22	299.74	4,303.0	427.9	-749.0	862.6	0.00	0.00	
4,500.0	13.22	299.74	4,400.3	439.2	-768.9	885.5	0.00	0.00	
4,600.0	13.22	299.74	4,497.7	450.6	-788.7	908.3	0.00	0.00	
4,700.0	13.22	299.74	4,595.0	461.9	-808.6	931.2	0.00	0.00	
4,800.0	13.22	299.74	4,692.4	473.3	-828.4	954.1	0.00	0.00	
4,900.0	13.22	299.74	4,789.7	484.6	-848.3	977.0	0.00	0.00	
5,000.0	13.22	299.74	4,887.0	495.9	-868.2	999.8	0.00	0.00	

Planning Report

Database:	USA EDM 5000 Multi Users DB	Local Co-ordinate Reference:	Well 42D-35-795
Company:	Caerus Oil & Gas	TVD Reference:	30' KB @ 8931.0usft
Project:	Garfield County, CO (UTM 12N)	MD Reference:	30' KB @ 8931.0usft
Site:	S36-T7S-R95W (36L)	North Reference:	True
Well:	42D-35-795	Survey Calculation Method:	Minimum Curvature
Wellbore:	OH		
Design:	PLAN #1		

Planned Survey									
Measured Depth (usft)	Inclination (°)	Azimuth (°)	Vertical Depth (usft)	+N/-S (usft)	+E/-W (usft)	Vertical Section (usft)	Dogleg Rate (°/100usft)	Build Rate (°/100u)	Comments / Formations
5,100.0	13.22	299.74	4,984.4	507.3	-888.0	1,022.7	0.00	0.00	
5,200.0	13.22	299.74	5,081.7	518.6	-907.9	1,045.6	0.00	0.00	
5,300.0	13.22	299.74	5,179.1	530.0	-927.8	1,068.5	0.00	0.00	
5,400.0	13.22	299.74	5,276.4	541.3	-947.6	1,091.3	0.00	0.00	
5,500.0	13.22	299.74	5,373.8	552.7	-967.5	1,114.2	0.00	0.00	
5,600.0	13.22	299.74	5,471.1	564.0	-987.3	1,137.1	0.00	0.00	
5,700.0	13.22	299.74	5,568.5	575.4	-1,007.2	1,160.0	0.00	0.00	
5,800.0	13.22	299.74	5,665.8	586.7	-1,027.1	1,182.8	0.00	0.00	
5,900.0	13.22	299.74	5,763.2	598.1	-1,046.9	1,205.7	0.00	0.00	
6,000.0	13.22	299.74	5,860.5	609.4	-1,066.8	1,228.6	0.00	0.00	
6,100.0	13.22	299.74	5,957.9	620.8	-1,086.7	1,251.5	0.00	0.00	
6,200.0	13.22	299.74	6,055.2	632.1	-1,106.5	1,274.3	0.00	0.00	
6,300.0	13.22	299.74	6,152.6	643.5	-1,126.4	1,297.2	0.00	0.00	
6,400.0	13.22	299.74	6,249.9	654.8	-1,146.2	1,320.1	0.00	0.00	
6,500.0	13.22	299.74	6,347.3	666.1	-1,166.1	1,343.0	0.00	0.00	
6,600.0	13.22	299.74	6,444.6	677.5	-1,186.0	1,365.8	0.00	0.00	
6,700.0	13.22	299.74	6,542.0	688.8	-1,205.8	1,388.7	0.00	0.00	
6,800.0	13.22	299.74	6,639.3	700.2	-1,225.7	1,411.6	0.00	0.00	
6,900.0	13.22	299.74	6,736.7	711.5	-1,245.6	1,434.5	0.00	0.00	
6,954.8	13.22	299.74	6,790.0	717.8	-1,256.4	1,447.0	0.00	0.00	OHIO_CREEK
7,000.0	13.22	299.74	6,834.0	722.9	-1,265.4	1,457.3	0.00	0.00	
7,100.0	13.22	299.74	6,931.4	734.2	-1,285.3	1,480.2	0.00	0.00	
7,200.0	13.22	299.74	7,028.7	745.6	-1,305.1	1,503.1	0.00	0.00	
7,296.5	13.22	299.74	7,122.7	756.5	-1,324.3	1,525.2	0.00	0.00	Start Drop -2.00
7,300.0	13.15	299.74	7,126.1	756.9	-1,325.0	1,526.0	2.00	-2.00	
7,379.8	11.56	299.74	7,204.0	765.4	-1,339.8	1,543.0	2.00	-2.00	WILLIAMS_FORK
7,400.0	11.15	299.74	7,223.8	767.4	-1,343.3	1,547.0	2.00	-2.00	
7,500.0	9.15	299.74	7,322.2	776.1	-1,358.6	1,564.6	2.00	-2.00	
7,600.0	7.15	299.74	7,421.2	783.1	-1,370.9	1,578.8	2.00	-2.00	
7,700.0	5.15	299.74	7,520.6	788.5	-1,380.2	1,589.5	2.00	-2.00	
7,800.0	3.15	299.74	7,620.4	792.1	-1,386.5	1,596.8	2.00	-2.00	
7,900.0	1.15	299.74	7,720.3	793.9	-1,389.8	1,600.5	2.00	-2.00	
7,957.7	0.00	0.00	7,778.0	794.2	-1,390.3	1,601.1	2.00	-2.00	Start 2100.0 hold at 7957.7 MD
8,000.0	0.00	0.00	7,820.3	794.2	-1,390.3	1,601.1	0.00	0.00	
8,057.7	0.00	0.00	7,878.0	794.2	-1,390.3	1,601.1	0.00	0.00	TOP_GAS
8,100.0	0.00	0.00	7,920.3	794.2	-1,390.3	1,601.1	0.00	0.00	
8,200.0	0.00	0.00	8,020.3	794.2	-1,390.3	1,601.1	0.00	0.00	
8,300.0	0.00	0.00	8,120.3	794.2	-1,390.3	1,601.1	0.00	0.00	
8,400.0	0.00	0.00	8,220.3	794.2	-1,390.3	1,601.1	0.00	0.00	
8,500.0	0.00	0.00	8,320.3	794.2	-1,390.3	1,601.1	0.00	0.00	
8,600.0	0.00	0.00	8,420.3	794.2	-1,390.3	1,601.1	0.00	0.00	
8,700.0	0.00	0.00	8,520.3	794.2	-1,390.3	1,601.1	0.00	0.00	
8,800.0	0.00	0.00	8,620.3	794.2	-1,390.3	1,601.1	0.00	0.00	
8,900.0	0.00	0.00	8,720.3	794.2	-1,390.3	1,601.1	0.00	0.00	
9,000.0	0.00	0.00	8,820.3	794.2	-1,390.3	1,601.1	0.00	0.00	
9,100.0	0.00	0.00	8,920.3	794.2	-1,390.3	1,601.1	0.00	0.00	
9,200.0	0.00	0.00	9,020.3	794.2	-1,390.3	1,601.1	0.00	0.00	
9,300.0	0.00	0.00	9,120.3	794.2	-1,390.3	1,601.1	0.00	0.00	
9,400.0	0.00	0.00	9,220.3	794.2	-1,390.3	1,601.1	0.00	0.00	
9,500.0	0.00	0.00	9,320.3	794.2	-1,390.3	1,601.1	0.00	0.00	
9,600.0	0.00	0.00	9,420.3	794.2	-1,390.3	1,601.1	0.00	0.00	
9,651.7	0.00	0.00	9,472.0	794.2	-1,390.3	1,601.1	0.00	0.00	CAMEO

Planning Report

Database:	USA EDM 5000 Multi Users DB	Local Co-ordinate Reference:	Well 42D-35-795
Company:	Caerus Oil & Gas	TVD Reference:	30' KB @ 8931.0usft
Project:	Garfield County, CO (UTM 12N)	MD Reference:	30' KB @ 8931.0usft
Site:	S36-T7S-R95W (36L)	North Reference:	True
Well:	42D-35-795	Survey Calculation Method:	Minimum Curvature
Wellbore:	OH		
Design:	PLAN #1		

Planned Survey									
Measured Depth (usft)	Inclination (°)	Azimuth (°)	Vertical Depth (usft)	+N/-S (usft)	+E/-W (usft)	Vertical Section (usft)	Dogleg Rate (°/100usft)	Build Rate (°/100u)	Comments / Formations
9,700.0	0.00	0.00	9,520.3	794.2	-1,390.3	1,601.1	0.00	0.00	
9,800.0	0.00	0.00	9,620.3	794.2	-1,390.3	1,601.1	0.00	0.00	
9,900.0	0.00	0.00	9,720.3	794.2	-1,390.3	1,601.1	0.00	0.00	
9,907.7	0.00	0.00	9,728.0	794.2	-1,390.3	1,601.1	0.00	0.00	ROLLINS
10,000.0	0.00	0.00	9,820.3	794.2	-1,390.3	1,601.1	0.00	0.00	
10,057.7	0.00	0.00	9,878.0	794.2	-1,390.3	1,601.1	0.00	0.00	TD at 10057.7 - TD

Targets									
Target Name	Dip Angle (°)	Dip Dir. (°)	TVD (usft)	+N/-S (usft)	+E/-W (usft)	Northing (usft)	Easting (usft)	Latitude	Longitude
42D-35-795 PBHL - hit/miss target - Shape - Circle (radius 50.0)	0.00	0.00	9,878.0	794.2	-1,390.3	14,320,010.00	2,500,131.20	39.394339	-107.957224

Formations						
Measured Depth (usft)	Vertical Depth (usft)	Name	Lithology	Dip (°)	Dip Direction (°)	
6,954.8	6,790.0	OHIO_CREEK				
7,379.8	7,204.0	WILLIAMS_FORK				
8,057.7	7,878.0	TOP_GAS				
9,651.7	9,472.0	CAMEO				
9,907.7	9,728.0	ROLLINS				
10,057.7	9,878.0	TD				

Plan Annotations				
Measured Depth (usft)	Vertical Depth (usft)	+N/-S (usft)	+E/-W (usft)	Comment
300.0	300.0	0.0	0.0	Start Build 2.00
961.2	955.3	37.7	-66.0	Start 6335.3 hold at 961.2 MD
7,296.5	7,122.7	756.5	-1,324.3	Start Drop -2.00
7,957.7	7,778.0	794.2	-1,390.3	Start 2100.0 hold at 7957.7 MD
10,057.7	9,878.0	794.2	-1,390.3	TD at 10057.7