

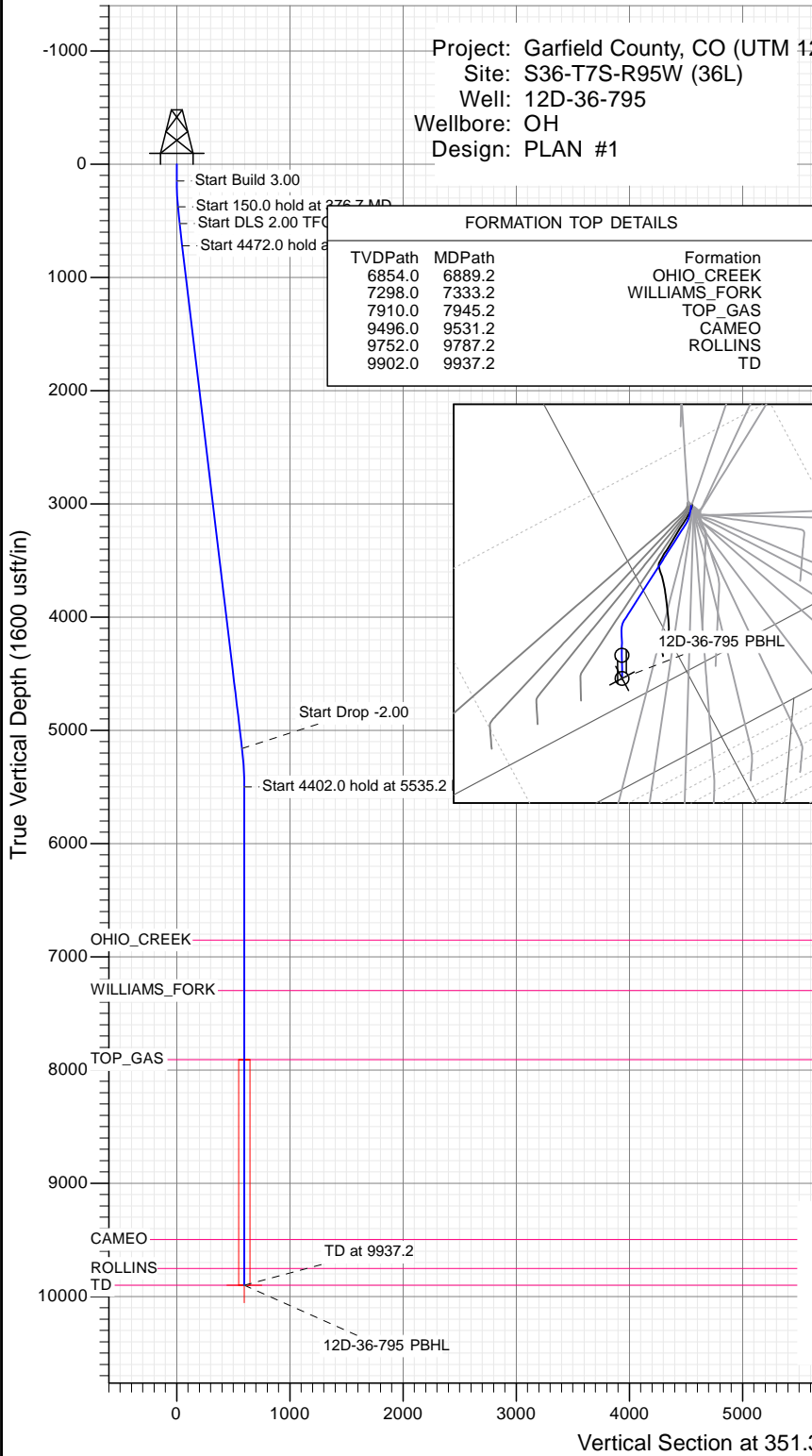


SECTION DETAILS

Sec	MD	Inc	Azi	TVD	+N/-S	+E/-W	Dleg	TFace	V Sect	Target
1	0.0	0.00	0.00	0.0	0.0	0.0	0.00	0.00	0.0	
2	150.0	0.00	0.00	150.0	0.0	0.0	0.00	0.00	0.0	
3	376.7	6.80	320.00	376.1	10.3	-8.6	3.00	320.00	11.5	
4	526.7	6.80	320.00	525.1	23.9	-20.1	0.00	0.00	26.6	
5	723.1	6.80	353.64	720.2	44.4	-28.8	2.00	106.67	48.2	
6	5195.0	6.80	353.64	5160.7	570.8	-87.5	0.00	0.00	577.5	
7	5535.2	0.00	0.00	5500.0	590.9	-89.7	2.00	180.00	597.6	
8	9937.2	0.00	0.00	9902.0	590.9	-89.7	0.00	0.00	597.6	12D-36-795 PBHL

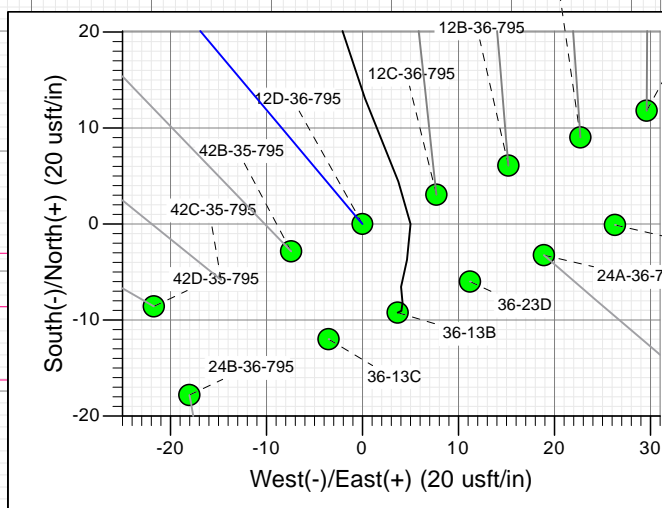
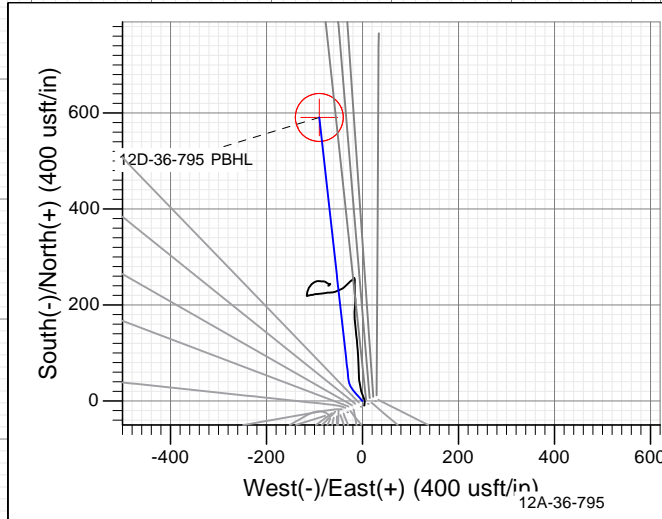
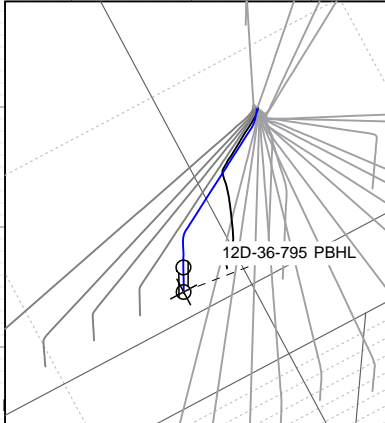
Project: Garfield County, CO (UTM 12A) 12D-36-795  
 Site: S36-T7S-R95W (36L)  
 Well: 12D-36-795  
 Wellbore: OH  
 Design: PLAN #1

Type	Target	Azimuth	Origin Type	N/S	E/W	From TVD
TD	No Target (Freehand)	351.37	Slot	0.0	0.0	0.0
Name		TVD	+N/-S	+E/-W	Latitude	Longitude
12D-36-795 PBHL		9902.0	590.9	-89.7	39.393805	-107.952548



FORMATION TOP DETAILS

TVDPPath	MDPath	Formation
6854.0	6889.2	OHIO_CREEK
7298.0	7333.2	WILLIAMS_FORK
7910.0	7945.2	TOP_GAS
9496.0	9531.2	CAMEO
9752.0	9787.2	ROLLINS
9902.0	9937.2	TD



**T M**  
 Azimuths to True North  
 Magnetic North: 9.42°  
 Magnetic Field  
 Strength: 51881.2snT  
 Dip Angle: 65.60°  
 Date: 12/14/2015  
 Model: HDGM

CASING DETAILS

No casing data is available



WELL DETAILS: 12D-36-795

+N/-S	+E/-W	Northing	Easting	Ground Level:	Latitude	Longitude
0.0	0.0	14319272.50	2501568.90	8901.0	39.392184	-107.952231



## Planning Report

<b>Database:</b> USA EDM 5000 Multi Users DB	<b>Local Co-ordinate Reference:</b> Well 12D-36-795
<b>Company:</b> Caerus Oil & Gas	<b>TVD Reference:</b> 30' KB @ 8931.0usft
<b>Project:</b> Garfield County, CO (UTM 12N)	<b>MD Reference:</b> 30' KB @ 8931.0usft
<b>Site:</b> S36-T7S-R95W (36L)	<b>North Reference:</b> True
<b>Well:</b> 12D-36-795	<b>Survey Calculation Method:</b> Minimum Curvature
<b>Wellbore:</b> OH	
<b>Design:</b> PLAN #1	

<b>Project</b> Garfield County, CO (UTM 12N)	
<b>Map System:</b> Universal Transverse Mercator (US Survey Feet)	<b>System Datum:</b> Mean Sea Level
<b>Geo Datum:</b> NAD 1927 - Western US	
<b>Map Zone:</b> Zone 12N (114 W to 108 W)	

<b>Site</b> S36-T7S-R95W (36L)		
<b>Site Position:</b>	<b>Northing:</b> 14,319,276.10 usft	<b>Latitude:</b> 39.392190
<b>From:</b> Map	<b>Easting:</b> 2,501,602.10 usft	<b>Longitude:</b> -107.952113
<b>Position Uncertainty:</b> 0.0 usft	<b>Slot Radius:</b> 13-3/16"	<b>Grid Convergence:</b> 1.94 °

<b>Well</b> 12D-36-795			
<b>Well Position</b>	<b>+N/-S</b> 0.0 usft	<b>Northing:</b> 14,319,272.50 usft	<b>Latitude:</b> 39.392184
	<b>+E/-W</b> 0.0 usft	<b>Easting:</b> 2,501,568.90 usft	<b>Longitude:</b> -107.952231
<b>Position Uncertainty</b>	0.0 usft	<b>Wellhead Elevation:</b> 0.0 usft	<b>Ground Level:</b> 8,901.0 usft

<b>Wellbore</b> OH					
<b>Magnetics</b>	<b>Model Name</b>	<b>Sample Date</b>	<b>Declination</b>	<b>Dip Angle</b>	<b>Field Strength</b>
	HDGM	12/14/2015	(°) 9.42	(°) 65.60	(nT) 51,881

<b>Design</b> PLAN #1				
<b>Audit Notes:</b>				
<b>Version:</b>	<b>Phase:</b> PLAN	<b>Tie On Depth:</b> 0.0		
<b>Vertical Section:</b>	<b>Depth From (TVD)</b>	<b>+N/-S</b>	<b>+E/-W</b>	<b>Direction</b>
	(usft) 0.0	(usft) 0.0	(usft) 0.0	(°) 351.37

<b>Plan Sections</b>										
Measured Depth (usft)	Inclination (°)	Azimuth (°)	Vertical Depth (usft)	+N/-S (usft)	+E/-W (usft)	Dogleg Rate (°/100usft)	Build Rate (°/100usft)	Turn Rate (°/100usft)	TFO (°)	Target
0.0	0.00	0.00	0.0	0.0	0.0	0.00	0.00	0.00	0.00	
150.0	0.00	0.00	150.0	0.0	0.0	0.00	0.00	0.00	0.00	
376.7	6.80	320.00	376.1	10.3	-8.6	3.00	3.00	0.00	320.00	
526.7	6.80	320.00	525.1	23.9	-20.1	0.00	0.00	0.00	0.00	
723.1	6.80	353.64	720.2	44.4	-28.8	2.00	0.00	17.13	106.67	
5,195.0	6.80	353.64	5,160.7	570.8	-87.5	0.00	0.00	0.00	0.00	
5,535.2	0.00	0.00	5,500.0	590.9	-89.7	2.00	-2.00	0.00	180.00	
9,937.2	0.00	0.00	9,902.0	590.9	-89.7	0.00	0.00	0.00	0.00	12D-36-795 PBHL

Planning Report

<b>Database:</b>	USA EDM 5000 Multi Users DB	<b>Local Co-ordinate Reference:</b>	Well 12D-36-795
<b>Company:</b>	Caerus Oil & Gas	<b>TVD Reference:</b>	30' KB @ 8931.0usft
<b>Project:</b>	Garfield County, CO (UTM 12N)	<b>MD Reference:</b>	30' KB @ 8931.0usft
<b>Site:</b>	S36-T7S-R95W (36L)	<b>North Reference:</b>	True
<b>Well:</b>	12D-36-795	<b>Survey Calculation Method:</b>	Minimum Curvature
<b>Wellbore:</b>	OH		
<b>Design:</b>	PLAN #1		

Planned Survey									
Measured Depth (usft)	Inclination (°)	Azimuth (°)	Vertical Depth (usft)	+N/-S (usft)	+E/-W (usft)	Vertical Section (usft)	Dogleg Rate (°/100usft)	Build Rate (°/100u)	Comments / Formations
0.0	0.00	0.00	0.0	0.0	0.0	0.0	0.00	0.00	
100.0	0.00	0.00	100.0	0.0	0.0	0.0	0.00	0.00	
150.0	0.00	0.00	150.0	0.0	0.0	0.0	0.00	0.00	Start Build 3.00
200.0	1.50	320.00	200.0	0.5	-0.4	0.6	3.00	3.00	
300.0	4.50	320.00	299.8	4.5	-3.8	5.0	3.00	3.00	
376.7	6.80	320.00	376.1	10.3	-8.6	11.5	3.00	3.00	Start 150.0 hold at 376.7 MD
400.0	6.80	320.00	399.3	12.4	-10.4	13.8	0.00	0.00	
500.0	6.80	320.00	498.6	21.5	-18.0	23.9	0.00	0.00	
526.7	6.80	320.00	525.1	23.9	-20.1	26.6	0.00	0.00	Start DLS 2.00 TFO 106.67
600.0	6.53	332.45	597.9	30.9	-24.8	34.3	2.00	-0.37	
700.0	6.68	349.84	697.3	41.7	-28.4	45.5	2.00	0.15	
723.1	6.80	353.64	720.2	44.4	-28.8	48.2	2.00	0.51	Start 4472.0 hold at 723.1 MD
800.0	6.80	353.64	796.6	53.4	-29.8	57.3	0.00	0.00	
900.0	6.80	353.64	895.9	65.2	-31.1	69.1	0.00	0.00	
1,000.0	6.80	353.64	995.2	77.0	-32.4	81.0	0.00	0.00	
1,100.0	6.80	353.64	1,094.5	88.7	-33.8	92.8	0.00	0.00	
1,200.0	6.80	353.64	1,193.7	100.5	-35.1	104.6	0.00	0.00	
1,300.0	6.80	353.64	1,293.0	112.3	-36.4	116.5	0.00	0.00	
1,400.0	6.80	353.64	1,392.3	124.1	-37.7	128.3	0.00	0.00	
1,500.0	6.80	353.64	1,491.6	135.8	-39.0	140.1	0.00	0.00	
1,600.0	6.80	353.64	1,590.9	147.6	-40.3	152.0	0.00	0.00	
1,700.0	6.80	353.64	1,690.2	159.4	-41.6	163.8	0.00	0.00	
1,800.0	6.80	353.64	1,789.5	171.2	-42.9	175.7	0.00	0.00	
1,900.0	6.80	353.64	1,888.8	182.9	-44.3	187.5	0.00	0.00	
2,000.0	6.80	353.64	1,988.1	194.7	-45.6	199.3	0.00	0.00	
2,100.0	6.80	353.64	2,087.4	206.5	-46.9	211.2	0.00	0.00	
2,200.0	6.80	353.64	2,186.7	218.2	-48.2	223.0	0.00	0.00	
2,300.0	6.80	353.64	2,286.0	230.0	-49.5	234.8	0.00	0.00	
2,400.0	6.80	353.64	2,385.3	241.8	-50.8	246.7	0.00	0.00	
2,500.0	6.80	353.64	2,484.6	253.6	-52.1	258.5	0.00	0.00	
2,600.0	6.80	353.64	2,583.9	265.3	-53.4	270.3	0.00	0.00	
2,700.0	6.80	353.64	2,683.2	277.1	-54.7	282.2	0.00	0.00	
2,800.0	6.80	353.64	2,782.5	288.9	-56.1	294.0	0.00	0.00	
2,900.0	6.80	353.64	2,881.8	300.6	-57.4	305.8	0.00	0.00	
3,000.0	6.80	353.64	2,981.1	312.4	-58.7	317.7	0.00	0.00	
3,100.0	6.80	353.64	3,080.4	324.2	-60.0	329.5	0.00	0.00	
3,200.0	6.80	353.64	3,179.7	336.0	-61.3	341.4	0.00	0.00	
3,300.0	6.80	353.64	3,279.0	347.7	-62.6	353.2	0.00	0.00	
3,400.0	6.80	353.64	3,378.3	359.5	-63.9	365.0	0.00	0.00	
3,500.0	6.80	353.64	3,477.6	371.3	-65.2	376.9	0.00	0.00	
3,600.0	6.80	353.64	3,576.8	383.0	-66.5	388.7	0.00	0.00	
3,700.0	6.80	353.64	3,676.1	394.8	-67.9	400.5	0.00	0.00	
3,800.0	6.80	353.64	3,775.4	406.6	-69.2	412.4	0.00	0.00	
3,900.0	6.80	353.64	3,874.7	418.4	-70.5	424.2	0.00	0.00	
4,000.0	6.80	353.64	3,974.0	430.1	-71.8	436.0	0.00	0.00	
4,100.0	6.80	353.64	4,073.3	441.9	-73.1	447.9	0.00	0.00	
4,200.0	6.80	353.64	4,172.6	453.7	-74.4	459.7	0.00	0.00	
4,300.0	6.80	353.64	4,271.9	465.5	-75.7	471.5	0.00	0.00	
4,400.0	6.80	353.64	4,371.2	477.2	-77.0	483.4	0.00	0.00	
4,500.0	6.80	353.64	4,470.5	489.0	-78.3	495.2	0.00	0.00	
4,600.0	6.80	353.64	4,569.8	500.8	-79.7	507.1	0.00	0.00	
4,700.0	6.80	353.64	4,669.1	512.5	-81.0	518.9	0.00	0.00	

Planning Report

<b>Database:</b>	USA EDM 5000 Multi Users DB	<b>Local Co-ordinate Reference:</b>	Well 12D-36-795
<b>Company:</b>	Caerus Oil & Gas	<b>TVD Reference:</b>	30' KB @ 8931.0usft
<b>Project:</b>	Garfield County, CO (UTM 12N)	<b>MD Reference:</b>	30' KB @ 8931.0usft
<b>Site:</b>	S36-T7S-R95W (36L)	<b>North Reference:</b>	True
<b>Well:</b>	12D-36-795	<b>Survey Calculation Method:</b>	Minimum Curvature
<b>Wellbore:</b>	OH		
<b>Design:</b>	PLAN #1		

Planned Survey									
Measured Depth (usft)	Inclination (°)	Azimuth (°)	Vertical Depth (usft)	+N/-S (usft)	+E/-W (usft)	Vertical Section (usft)	Dogleg Rate (°/100usft)	Build Rate (°/100u)	Comments / Formations
4,800.0	6.80	353.64	4,768.4	524.3	-82.3	530.7	0.00	0.00	
4,900.0	6.80	353.64	4,867.7	536.1	-83.6	542.6	0.00	0.00	
5,000.0	6.80	353.64	4,967.0	547.9	-84.9	554.4	0.00	0.00	
5,100.0	6.80	353.64	5,066.3	559.6	-86.2	566.2	0.00	0.00	
5,195.0	6.80	353.64	5,160.7	570.8	-87.5	577.5	0.00	0.00	Start Drop -2.00
5,200.0	6.70	353.64	5,165.6	571.4	-87.5	578.1	2.00	-2.00	
5,300.0	4.70	353.64	5,265.1	581.3	-88.6	588.0	2.00	-2.00	
5,400.0	2.70	353.64	5,364.9	587.7	-89.3	594.4	2.00	-2.00	
5,500.0	0.70	353.64	5,464.8	590.7	-89.7	597.4	2.00	-2.00	
5,535.2	0.00	0.00	5,500.0	590.9	-89.7	597.6	2.00	-2.00	Start 4402.0 hold at 5535.2 MD
5,600.0	0.00	0.00	5,564.8	590.9	-89.7	597.6	0.00	0.00	
5,700.0	0.00	0.00	5,664.8	590.9	-89.7	597.6	0.00	0.00	
5,800.0	0.00	0.00	5,764.8	590.9	-89.7	597.6	0.00	0.00	
5,900.0	0.00	0.00	5,864.8	590.9	-89.7	597.6	0.00	0.00	
6,000.0	0.00	0.00	5,964.8	590.9	-89.7	597.6	0.00	0.00	
6,100.0	0.00	0.00	6,064.8	590.9	-89.7	597.6	0.00	0.00	
6,200.0	0.00	0.00	6,164.8	590.9	-89.7	597.6	0.00	0.00	
6,300.0	0.00	0.00	6,264.8	590.9	-89.7	597.6	0.00	0.00	
6,400.0	0.00	0.00	6,364.8	590.9	-89.7	597.6	0.00	0.00	
6,500.0	0.00	0.00	6,464.8	590.9	-89.7	597.6	0.00	0.00	
6,600.0	0.00	0.00	6,564.8	590.9	-89.7	597.6	0.00	0.00	
6,700.0	0.00	0.00	6,664.8	590.9	-89.7	597.6	0.00	0.00	
6,800.0	0.00	0.00	6,764.8	590.9	-89.7	597.6	0.00	0.00	
6,889.2	0.00	0.00	6,854.0	590.9	-89.7	597.6	0.00	0.00	OHIO_CREEK
6,900.0	0.00	0.00	6,864.8	590.9	-89.7	597.6	0.00	0.00	
7,000.0	0.00	0.00	6,964.8	590.9	-89.7	597.6	0.00	0.00	
7,100.0	0.00	0.00	7,064.8	590.9	-89.7	597.6	0.00	0.00	
7,200.0	0.00	0.00	7,164.8	590.9	-89.7	597.6	0.00	0.00	
7,300.0	0.00	0.00	7,264.8	590.9	-89.7	597.6	0.00	0.00	
7,333.2	0.00	0.00	7,298.0	590.9	-89.7	597.6	0.00	0.00	WILLIAMS_FORK
7,400.0	0.00	0.00	7,364.8	590.9	-89.7	597.6	0.00	0.00	
7,500.0	0.00	0.00	7,464.8	590.9	-89.7	597.6	0.00	0.00	
7,600.0	0.00	0.00	7,564.8	590.9	-89.7	597.6	0.00	0.00	
7,700.0	0.00	0.00	7,664.8	590.9	-89.7	597.6	0.00	0.00	
7,800.0	0.00	0.00	7,764.8	590.9	-89.7	597.6	0.00	0.00	
7,900.0	0.00	0.00	7,864.8	590.9	-89.7	597.6	0.00	0.00	
7,945.2	0.00	0.00	7,910.0	590.9	-89.7	597.6	0.00	0.00	TOP_GAS
8,000.0	0.00	0.00	7,964.8	590.9	-89.7	597.6	0.00	0.00	
8,100.0	0.00	0.00	8,064.8	590.9	-89.7	597.6	0.00	0.00	
8,200.0	0.00	0.00	8,164.8	590.9	-89.7	597.6	0.00	0.00	
8,300.0	0.00	0.00	8,264.8	590.9	-89.7	597.6	0.00	0.00	
8,400.0	0.00	0.00	8,364.8	590.9	-89.7	597.6	0.00	0.00	
8,500.0	0.00	0.00	8,464.8	590.9	-89.7	597.6	0.00	0.00	
8,600.0	0.00	0.00	8,564.8	590.9	-89.7	597.6	0.00	0.00	
8,700.0	0.00	0.00	8,664.8	590.9	-89.7	597.6	0.00	0.00	
8,800.0	0.00	0.00	8,764.8	590.9	-89.7	597.6	0.00	0.00	
8,900.0	0.00	0.00	8,864.8	590.9	-89.7	597.6	0.00	0.00	
9,000.0	0.00	0.00	8,964.8	590.9	-89.7	597.6	0.00	0.00	
9,100.0	0.00	0.00	9,064.8	590.9	-89.7	597.6	0.00	0.00	
9,200.0	0.00	0.00	9,164.8	590.9	-89.7	597.6	0.00	0.00	
9,300.0	0.00	0.00	9,264.8	590.9	-89.7	597.6	0.00	0.00	
9,400.0	0.00	0.00	9,364.8	590.9	-89.7	597.6	0.00	0.00	

## Planning Report

<b>Database:</b>	USA EDM 5000 Multi Users DB	<b>Local Co-ordinate Reference:</b>	Well 12D-36-795
<b>Company:</b>	Caerus Oil & Gas	<b>TVD Reference:</b>	30' KB @ 8931.0usft
<b>Project:</b>	Garfield County, CO (UTM 12N)	<b>MD Reference:</b>	30' KB @ 8931.0usft
<b>Site:</b>	S36-T7S-R95W (36L)	<b>North Reference:</b>	True
<b>Well:</b>	12D-36-795	<b>Survey Calculation Method:</b>	Minimum Curvature
<b>Wellbore:</b>	OH		
<b>Design:</b>	PLAN #1		

Planned Survey									
Measured Depth (usft)	Inclination (°)	Azimuth (°)	Vertical Depth (usft)	+N/-S (usft)	+E/-W (usft)	Vertical Section (usft)	Dogleg Rate (°/100usft)	Build Rate (°/100u)	Comments / Formations
9,500.0	0.00	0.00	9,464.8	590.9	-89.7	597.6	0.00	0.00	
9,531.2	0.00	0.00	9,496.0	590.9	-89.7	597.6	0.00	0.00	CAMEO
9,600.0	0.00	0.00	9,564.8	590.9	-89.7	597.6	0.00	0.00	
9,700.0	0.00	0.00	9,664.8	590.9	-89.7	597.6	0.00	0.00	
9,787.2	0.00	0.00	9,752.0	590.9	-89.7	597.6	0.00	0.00	ROLLINS
9,800.0	0.00	0.00	9,764.8	590.9	-89.7	597.6	0.00	0.00	
9,900.0	0.00	0.00	9,864.8	590.9	-89.7	597.6	0.00	0.00	
9,937.2	0.00	0.00	9,902.0	590.9	-89.7	597.6	0.00	0.00	TD at 9937.2 - TD

Targets											
Target Name	- hit/miss target	- Shape	Dip Angle (°)	Dip Dir. (°)	TVD (usft)	+N/-S (usft)	+E/-W (usft)	Northing (usft)	Easting (usft)	Latitude	Longitude
12D-36-795 PBHL			0.00	0.00	9,902.0	590.9	-89.7	14,319,860.00	2,501,459.30	39.393805	-107.952548
- plan hits target center											
- Circle (radius 50.0)											

Formations						
Measured Depth (usft)	Vertical Depth (usft)	Name	Lithology	Dip (°)	Dip Direction (°)	
6,889.2	6,854.0	OHIO_CREEK				
7,333.2	7,298.0	WILLIAMS_FORK				
7,945.2	7,910.0	TOP_GAS				
9,531.2	9,496.0	CAMEO				
9,787.2	9,752.0	ROLLINS				
9,937.2	9,902.0	TD				

Plan Annotations					
Measured Depth (usft)	Vertical Depth (usft)	Local Coordinates		Comment	
		+N/-S (usft)	+E/-W (usft)		
150.0	150.0	0.0	0.0	Start Build 3.00	
376.7	376.1	10.3	-8.6	Start 150.0 hold at 376.7 MD	
526.7	525.1	23.9	-20.1	Start DLS 2.00 TFO 106.67	
723.1	720.2	44.4	-28.8	Start 4472.0 hold at 723.1 MD	
5,195.0	5,160.7	570.8	-87.5	Start Drop -2.00	
5,535.2	5,500.0	590.9	-89.7	Start 4402.0 hold at 5535.2 MD	
9,937.2	9,902.0	590.9	-89.7	TD at 9937.2	