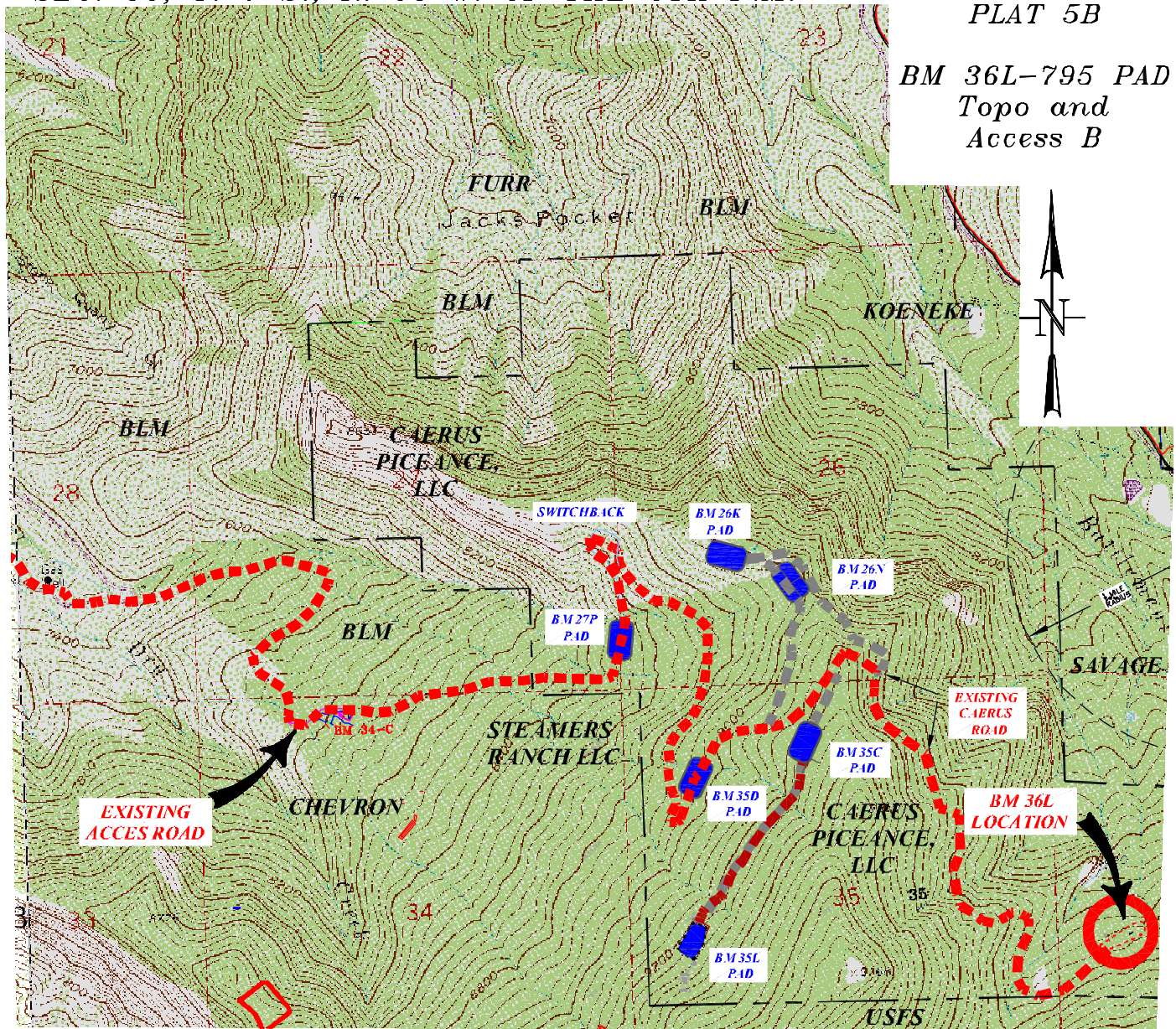


SEC. 36, T. 7 S., R. 95 W. OF THE 6TH P.M.

PLAT 5B

BM 36L-795 PAD
Topo and
Access B



ACCESS:

FROM THE UNA BRIDGE, PROCEED ALONG COUNTY ROAD 318 IN A GENERAL EAST/NORTHEAST DIRECTION ±1.2 MILES TO THE KLEBOLD/THROM GATE, PROCEED IN A GENERAL EASTERLY/SOUTHEASTERLY DIRECTION ON A PRIVATE DIRT/GRAVEL ROAD ±1.8 MILES TO THE APPROXIMATE BLM BOUNDARY, CONTINUE ON THE DIRT/GRAVEL ROAD THRU BLM IN A GENERAL NORTHERLY DIRECTION ±0.1 MILES TO THE APPROXIMATE TOM BROWN, INC BOUNDARY, CONTINUE ON THE DIRT/GRAVEL ROAD THRU TOM BROWN, INC PROPERTY IN A GENERAL NORTHEASTERLY/NORTHWESTERLY DIRECTION ±1.6 MILES TO AN INTERSECTION WITH A DIRT/GRAVEL ROAD ON THE RIGHT, PROCEED RIGHT IN A GENERAL EASTERLY DIRECTION THRU TOM BROWN, INC PROPERTY ±0.6 MILES TO THE APPROXIMATE BLM BOUNDARY, CONTINUE ON THE DIRT/GRAVEL ROAD IN A GENERAL EASTERLY DIRECTION THRU BLM PROPERTY ±3.1 MILES TO THE TOM BROWN, INC FEDERAL #28-95 WELL SITE, CONTINUE ALONG THE DIRT/GRAVEL ROAD IN A GENERAL EASTERLY DIRECTION ±2.3 MILES TO A 'Y' INTERSECTION, PROCEED LEFT ALONG THE DIRT/GRAVEL ROAD IN A GENERAL EASTERLY DIRECTION ±0.4 MILES TO A SWITCHBACK PROCEED UP THE ROADWAY ±0.9 MILES TO THE EXISTING 35-D-795 PAD PROCEED THRU THE PAD LOCATION ±0.6 MILES TO A DIRT ROAD INTERSECTION (Top of the Divide), THEN TURN RIGHT AND PROCEED ±1.4 MILES and TURN RIGHT TO THE EXISTING PAD 36L-795 LOCATION BEING THE POINT OF DESTINATION.

Battlement Mesa 36-L
LOT12(NWSW), SECTION 36,
T. 7 S., R. 95 W. 6th P.M.
Garfield County Colorado.

Caerus Piceance LLC



TOPO & ACCESS-B

CONSTRUCTION SURVEYS, INC.
0012 SUNRISE BLVD. SILT, CO
81652 (970)876-5753

SURVEY BY: REW 12/09/15

PDOP: 1.9

DRAWN BY: REW 01/11/16

DWG: CAERUS\BM36L-795PLAT_1

REVISED