

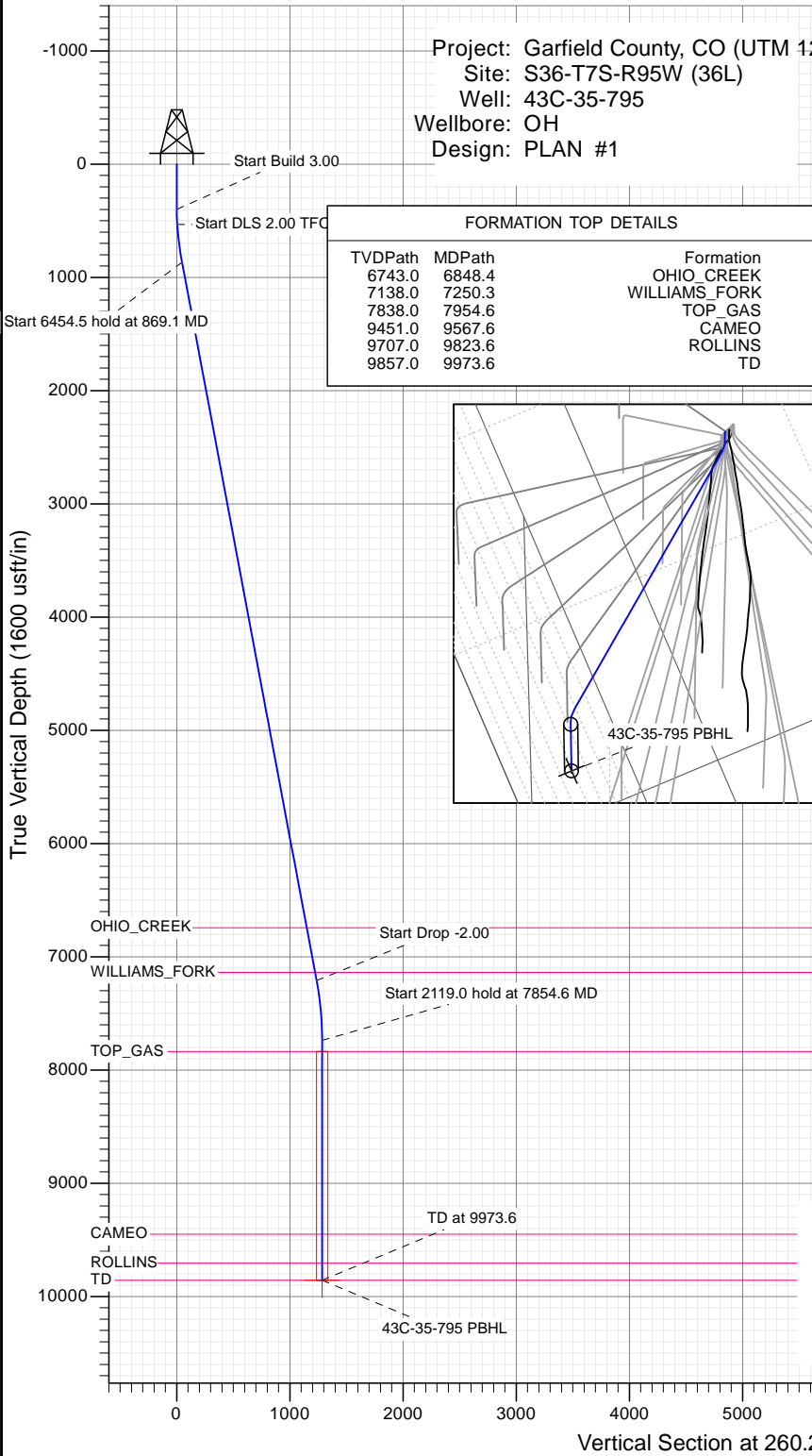


SECTION DETAILS

Sec	MD	Inc	Azi	TVD	+N/-S	+E/-W	Dleg	TFace	VSect	Target
1	0.0	0.00	0.00	0.0	0.0	0.0	0.00	0.00	0.0	
2	400.0	0.00	0.00	400.0	0.0	0.0	0.00	0.00	0.0	
3	533.3	4.00	270.00	533.2	0.0	-4.7	3.00	270.00	4.6	
4	869.1	10.62	260.12	866.0	-5.3	-46.9	2.00	-15.69	47.1	
5	7323.6	10.62	260.12	7210.0	-209.4	-1218.8	0.00	0.00	1236.7	
6	7854.6	0.00	0.00	7738.0	-217.8	-1267.2	2.00	180.00	1285.8	
7	9973.6	0.00	0.00	9857.0	-217.8	-1267.2	0.00	0.00	1285.8	43C-35-795 PBHL

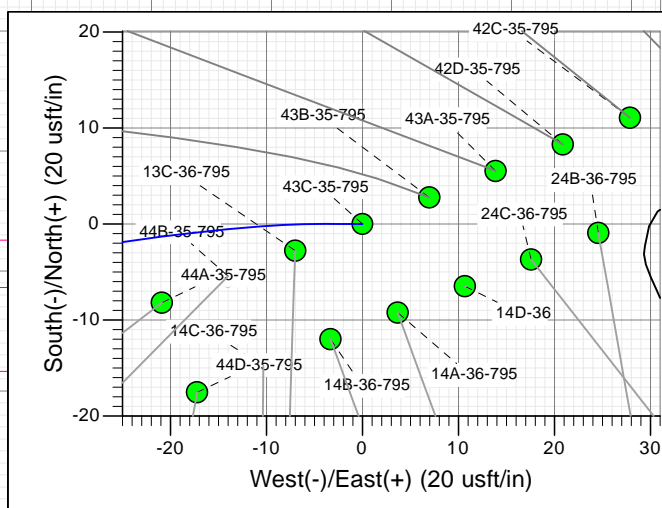
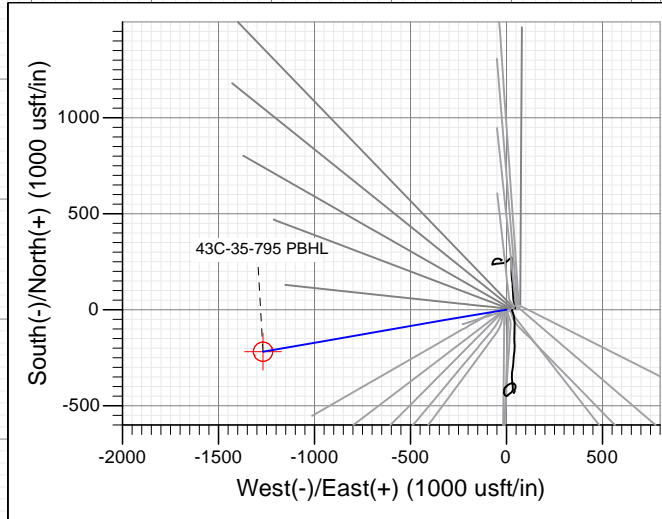
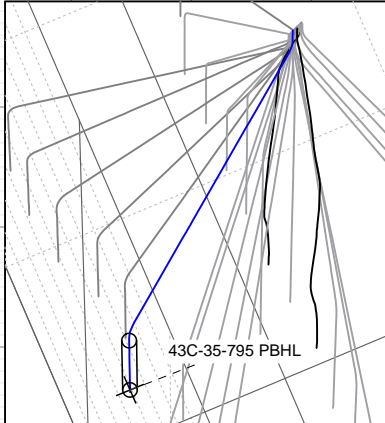
Project: Garfield County, CO (UTM 12  
 Site: S36-T7S-R95W (36L)  
 Well: 43C-35-795  
 Wellbore: OH  
 Design: PLAN #1

Type	Target	Azimuth	Origin Type	N/S	E/W	From TVD
TD	No Target (Freehand)	260.25	Slot	0.0	0.0	0.0
Name		TVD	+N/-S	+E/-W	Latitude	Longitude
43C-35-795 PBHL		9857.0	-217.8	-1267.2	39.391539	-107.956863



FORMATION TOP DETAILS

TVDPATH	MDPATH	FORMATION
6743.0	6848.4	OHIO_CREEK
7138.0	7250.3	WILLIAMS_FORK
7838.0	7954.6	TOP_GAS
9451.0	9567.6	CAMEO
9707.0	9823.6	ROLLINS
9857.0	9973.6	TD



Azimuths to True North  
 Magnetic North: 9.42°  
 Magnetic Field  
 Strength: 51881.2snT  
 Dip Angle: 65.60°  
 Date: 12/14/2015  
 Model: HDGM

CASING DETAILS  
 No casing data is available



WELL DETAILS: 43C-35-795

+N/-S	+E/-W	Northing	Ground Level:	8901.0	Latitude	Longitude
0.0	0.0	14319254.20	Easting	2501526.90	39.392137	-107.952381

## Planning Report

<b>Database:</b> USA EDM 5000 Multi Users DB	<b>Local Co-ordinate Reference:</b> Well 43C-35-795
<b>Company:</b> Caerus Oil & Gas	<b>TVD Reference:</b> 30' KB @ 8931.0usft
<b>Project:</b> Garfield County, CO (UTM 12N)	<b>MD Reference:</b> 30' KB @ 8931.0usft
<b>Site:</b> S36-T7S-R95W (36L)	<b>North Reference:</b> True
<b>Well:</b> 43C-35-795	<b>Survey Calculation Method:</b> Minimum Curvature
<b>Wellbore:</b> OH	
<b>Design:</b> PLAN #1	

<b>Project</b> Garfield County, CO (UTM 12N)	
<b>Map System:</b> Universal Transverse Mercator (US Survey Feet)	<b>System Datum:</b> Mean Sea Level
<b>Geo Datum:</b> NAD 1927 - Western US	
<b>Map Zone:</b> Zone 12N (114 W to 108 W)	

<b>Site</b> S36-T7S-R95W (36L)		
<b>Site Position:</b>	<b>Northing:</b> 14,319,276.10 usft	<b>Latitude:</b> 39.392190
<b>From:</b> Map	<b>Easting:</b> 2,501,602.10 usft	<b>Longitude:</b> -107.952113
<b>Position Uncertainty:</b> 0.0 usft	<b>Slot Radius:</b> 13-3/16"	<b>Grid Convergence:</b> 1.94 °

<b>Well</b> 43C-35-795			
<b>Well Position</b>	<b>+N/-S</b> 0.0 usft	<b>Northing:</b> 14,319,254.20 usft	<b>Latitude:</b> 39.392137
	<b>+E/-W</b> 0.0 usft	<b>Easting:</b> 2,501,526.90 usft	<b>Longitude:</b> -107.952381
<b>Position Uncertainty</b>	0.0 usft	<b>Wellhead Elevation:</b> 0.0 usft	<b>Ground Level:</b> 8,901.0 usft

<b>Wellbore</b> OH					
<b>Magnetics</b>	<b>Model Name</b>	<b>Sample Date</b>	<b>Declination</b>	<b>Dip Angle</b>	<b>Field Strength</b>
	HDGM	12/14/2015	(°) 9.42	(°) 65.60	(nT) 51,881

<b>Design</b> PLAN #1				
<b>Audit Notes:</b>				
<b>Version:</b>	<b>Phase:</b> PLAN	<b>Tie On Depth:</b> 0.0		
<b>Vertical Section:</b>	<b>Depth From (TVD)</b>	<b>+N/-S</b>	<b>+E/-W</b>	<b>Direction</b>
	(usft)	(usft)	(usft)	(°)
	0.0	0.0	0.0	260.25

<b>Plan Sections</b>										
Measured Depth (usft)	Inclination (°)	Azimuth (°)	Vertical Depth (usft)	+N/-S (usft)	+E/-W (usft)	Dogleg Rate (°/100usft)	Build Rate (°/100usft)	Turn Rate (°/100usft)	TFO (°)	Target
0.0	0.00	0.00	0.0	0.0	0.0	0.00	0.00	0.00	0.00	
400.0	0.00	0.00	400.0	0.0	0.0	0.00	0.00	0.00	0.00	
533.3	4.00	270.00	533.2	0.0	-4.7	3.00	3.00	0.00	270.00	
869.1	10.62	260.12	866.0	-5.3	-46.9	2.00	1.97	-2.94	-15.69	
7,323.6	10.62	260.12	7,210.0	-209.4	-1,218.8	0.00	0.00	0.00	0.00	
7,854.6	0.00	0.00	7,738.0	-217.8	-1,267.2	2.00	-2.00	0.00	180.00	
9,973.6	0.00	0.00	9,857.0	-217.8	-1,267.2	0.00	0.00	0.00	0.00	43C-35-795 PBHL

Planning Report

<b>Database:</b>	USA EDM 5000 Multi Users DB	<b>Local Co-ordinate Reference:</b>	Well 43C-35-795
<b>Company:</b>	Caerus Oil & Gas	<b>TVD Reference:</b>	30' KB @ 8931.0usft
<b>Project:</b>	Garfield County, CO (UTM 12N)	<b>MD Reference:</b>	30' KB @ 8931.0usft
<b>Site:</b>	S36-T7S-R95W (36L)	<b>North Reference:</b>	True
<b>Well:</b>	43C-35-795	<b>Survey Calculation Method:</b>	Minimum Curvature
<b>Wellbore:</b>	OH		
<b>Design:</b>	PLAN #1		

Planned Survey									
Measured Depth (usft)	Inclination (°)	Azimuth (°)	Vertical Depth (usft)	+N/-S (usft)	+E/-W (usft)	Vertical Section (usft)	Dogleg Rate (°/100usft)	Build Rate (°/100u)	Comments / Formations
0.0	0.00	0.00	0.0	0.0	0.0	0.0	0.00	0.00	
100.0	0.00	0.00	100.0	0.0	0.0	0.0	0.00	0.00	
200.0	0.00	0.00	200.0	0.0	0.0	0.0	0.00	0.00	
300.0	0.00	0.00	300.0	0.0	0.0	0.0	0.00	0.00	
400.0	0.00	0.00	400.0	0.0	0.0	0.0	0.00	0.00	Start Build 3.00
500.0	3.00	270.00	500.0	0.0	-2.6	2.6	3.00	3.00	
533.3	4.00	270.00	533.2	0.0	-4.7	4.6	3.00	3.00	Start DLS 2.00 TFO -15.69
600.0	5.30	266.09	599.7	-0.2	-10.0	9.9	2.00	1.94	
700.0	7.27	262.86	699.1	-1.3	-20.9	20.8	2.00	1.97	
800.0	9.25	261.00	798.0	-3.4	-35.1	35.2	2.00	1.98	
869.1	10.62	260.12	866.0	-5.3	-46.9	47.1	2.00	1.99	Start 6454.5 hold at 869.1 MD
900.0	10.62	260.12	896.5	-6.3	-52.5	52.8	0.00	0.00	
1,000.0	10.62	260.12	994.7	-9.5	-70.7	71.2	0.00	0.00	
1,100.0	10.62	260.12	1,093.0	-12.6	-88.8	89.7	0.00	0.00	
1,200.0	10.62	260.12	1,191.3	-15.8	-107.0	108.1	0.00	0.00	
1,300.0	10.62	260.12	1,289.6	-18.9	-125.1	126.5	0.00	0.00	
1,400.0	10.62	260.12	1,387.9	-22.1	-143.3	145.0	0.00	0.00	
1,500.0	10.62	260.12	1,486.2	-25.3	-161.4	163.4	0.00	0.00	
1,600.0	10.62	260.12	1,584.5	-28.4	-179.6	181.8	0.00	0.00	
1,700.0	10.62	260.12	1,682.8	-31.6	-197.8	200.3	0.00	0.00	
1,800.0	10.62	260.12	1,781.0	-34.8	-215.9	218.7	0.00	0.00	
1,900.0	10.62	260.12	1,879.3	-37.9	-234.1	237.1	0.00	0.00	
2,000.0	10.62	260.12	1,977.6	-41.1	-252.2	255.5	0.00	0.00	
2,100.0	10.62	260.12	2,075.9	-44.2	-270.4	274.0	0.00	0.00	
2,200.0	10.62	260.12	2,174.2	-47.4	-288.5	292.4	0.00	0.00	
2,300.0	10.62	260.12	2,272.5	-50.6	-306.7	310.8	0.00	0.00	
2,400.0	10.62	260.12	2,370.8	-53.7	-324.9	329.3	0.00	0.00	
2,500.0	10.62	260.12	2,469.0	-56.9	-343.0	347.7	0.00	0.00	
2,600.0	10.62	260.12	2,567.3	-60.0	-361.2	366.1	0.00	0.00	
2,700.0	10.62	260.12	2,665.6	-63.2	-379.3	384.6	0.00	0.00	
2,800.0	10.62	260.12	2,763.9	-66.4	-397.5	403.0	0.00	0.00	
2,900.0	10.62	260.12	2,862.2	-69.5	-415.6	421.4	0.00	0.00	
3,000.0	10.62	260.12	2,960.5	-72.7	-433.8	439.8	0.00	0.00	
3,100.0	10.62	260.12	3,058.8	-75.9	-452.0	458.3	0.00	0.00	
3,200.0	10.62	260.12	3,157.1	-79.0	-470.1	476.7	0.00	0.00	
3,300.0	10.62	260.12	3,255.3	-82.2	-488.3	495.1	0.00	0.00	
3,400.0	10.62	260.12	3,353.6	-85.3	-506.4	513.6	0.00	0.00	
3,500.0	10.62	260.12	3,451.9	-88.5	-524.6	532.0	0.00	0.00	
3,600.0	10.62	260.12	3,550.2	-91.7	-542.7	550.4	0.00	0.00	
3,700.0	10.62	260.12	3,648.5	-94.8	-560.9	568.9	0.00	0.00	
3,800.0	10.62	260.12	3,746.8	-98.0	-579.1	587.3	0.00	0.00	
3,900.0	10.62	260.12	3,845.1	-101.2	-597.2	605.7	0.00	0.00	
4,000.0	10.62	260.12	3,943.3	-104.3	-615.4	624.1	0.00	0.00	
4,100.0	10.62	260.12	4,041.6	-107.5	-633.5	642.6	0.00	0.00	
4,200.0	10.62	260.12	4,139.9	-110.6	-651.7	661.0	0.00	0.00	
4,300.0	10.62	260.12	4,238.2	-113.8	-669.8	679.4	0.00	0.00	
4,400.0	10.62	260.12	4,336.5	-117.0	-688.0	697.9	0.00	0.00	
4,500.0	10.62	260.12	4,434.8	-120.1	-706.2	716.3	0.00	0.00	
4,600.0	10.62	260.12	4,533.1	-123.3	-724.3	734.7	0.00	0.00	
4,700.0	10.62	260.12	4,631.4	-126.5	-742.5	753.2	0.00	0.00	
4,800.0	10.62	260.12	4,729.6	-129.6	-760.6	771.6	0.00	0.00	
4,900.0	10.62	260.12	4,827.9	-132.8	-778.8	790.0	0.00	0.00	

## Planning Report

<b>Database:</b>	USA EDM 5000 Multi Users DB	<b>Local Co-ordinate Reference:</b>	Well 43C-35-795
<b>Company:</b>	Caerus Oil & Gas	<b>TVD Reference:</b>	30' KB @ 8931.0usft
<b>Project:</b>	Garfield County, CO (UTM 12N)	<b>MD Reference:</b>	30' KB @ 8931.0usft
<b>Site:</b>	S36-T7S-R95W (36L)	<b>North Reference:</b>	True
<b>Well:</b>	43C-35-795	<b>Survey Calculation Method:</b>	Minimum Curvature
<b>Wellbore:</b>	OH		
<b>Design:</b>	PLAN #1		

Planned Survey									
Measured Depth (usft)	Inclination (°)	Azimuth (°)	Vertical Depth (usft)	+N/-S (usft)	+E/-W (usft)	Vertical Section (usft)	Dogleg Rate (°/100usft)	Build Rate (°/100u)	Comments / Formations
5,000.0	10.62	260.12	4,926.2	-135.9	-796.9	808.4	0.00	0.00	
5,100.0	10.62	260.12	5,024.5	-139.1	-815.1	826.9	0.00	0.00	
5,200.0	10.62	260.12	5,122.8	-142.3	-833.3	845.3	0.00	0.00	
5,300.0	10.62	260.12	5,221.1	-145.4	-851.4	863.7	0.00	0.00	
5,400.0	10.62	260.12	5,319.4	-148.6	-869.6	882.2	0.00	0.00	
5,500.0	10.62	260.12	5,417.6	-151.7	-887.7	900.6	0.00	0.00	
5,600.0	10.62	260.12	5,515.9	-154.9	-905.9	919.0	0.00	0.00	
5,700.0	10.62	260.12	5,614.2	-158.1	-924.0	937.5	0.00	0.00	
5,800.0	10.62	260.12	5,712.5	-161.2	-942.2	955.9	0.00	0.00	
5,900.0	10.62	260.12	5,810.8	-164.4	-960.3	974.3	0.00	0.00	
6,000.0	10.62	260.12	5,909.1	-167.6	-978.5	992.7	0.00	0.00	
6,100.0	10.62	260.12	6,007.4	-170.7	-996.7	1,011.2	0.00	0.00	
6,200.0	10.62	260.12	6,105.7	-173.9	-1,014.8	1,029.6	0.00	0.00	
6,300.0	10.62	260.12	6,203.9	-177.0	-1,033.0	1,048.0	0.00	0.00	
6,400.0	10.62	260.12	6,302.2	-180.2	-1,051.1	1,066.5	0.00	0.00	
6,500.0	10.62	260.12	6,400.5	-183.4	-1,069.3	1,084.9	0.00	0.00	
6,600.0	10.62	260.12	6,498.8	-186.5	-1,087.4	1,103.3	0.00	0.00	
6,700.0	10.62	260.12	6,597.1	-189.7	-1,105.6	1,121.8	0.00	0.00	
6,800.0	10.62	260.12	6,695.4	-192.9	-1,123.8	1,140.2	0.00	0.00	
6,848.4	10.62	260.12	6,743.0	-194.4	-1,132.6	1,149.1	0.00	0.00	OHIO_CREEK
6,900.0	10.62	260.12	6,793.7	-196.0	-1,141.9	1,158.6	0.00	0.00	
7,000.0	10.62	260.12	6,891.9	-199.2	-1,160.1	1,177.0	0.00	0.00	
7,100.0	10.62	260.12	6,990.2	-202.3	-1,178.2	1,195.5	0.00	0.00	
7,200.0	10.62	260.12	7,088.5	-205.5	-1,196.4	1,213.9	0.00	0.00	
7,250.3	10.62	260.12	7,138.0	-207.1	-1,205.5	1,223.2	0.00	0.00	WILLIAMS_FORK
7,300.0	10.62	260.12	7,186.8	-208.7	-1,214.5	1,232.3	0.00	0.00	
7,323.6	10.62	260.12	7,210.0	-209.4	-1,218.8	1,236.7	0.00	0.00	Start Drop -2.00
7,400.0	9.09	260.12	7,285.3	-211.7	-1,231.7	1,249.8	2.00	-2.00	
7,500.0	7.09	260.12	7,384.3	-214.1	-1,245.6	1,263.8	2.00	-2.00	
7,600.0	5.09	260.12	7,483.7	-215.9	-1,256.0	1,274.5	2.00	-2.00	
7,700.0	3.09	260.12	7,583.4	-217.1	-1,263.1	1,281.6	2.00	-2.00	
7,800.0	1.09	260.12	7,683.4	-217.7	-1,266.7	1,285.2	2.00	-2.00	
7,854.6	0.00	0.00	7,738.0	-217.8	-1,267.2	1,285.8	2.00	-2.00	Start 2119.0 hold at 7854.6 MD
7,900.0	0.00	0.00	7,783.4	-217.8	-1,267.2	1,285.8	0.00	0.00	
7,954.6	0.00	0.00	7,838.0	-217.8	-1,267.2	1,285.8	0.00	0.00	TOP_GAS
8,000.0	0.00	0.00	7,883.4	-217.8	-1,267.2	1,285.8	0.00	0.00	
8,100.0	0.00	0.00	7,983.4	-217.8	-1,267.2	1,285.8	0.00	0.00	
8,200.0	0.00	0.00	8,083.4	-217.8	-1,267.2	1,285.8	0.00	0.00	
8,300.0	0.00	0.00	8,183.4	-217.8	-1,267.2	1,285.8	0.00	0.00	
8,400.0	0.00	0.00	8,283.4	-217.8	-1,267.2	1,285.8	0.00	0.00	
8,500.0	0.00	0.00	8,383.4	-217.8	-1,267.2	1,285.8	0.00	0.00	
8,600.0	0.00	0.00	8,483.4	-217.8	-1,267.2	1,285.8	0.00	0.00	
8,700.0	0.00	0.00	8,583.4	-217.8	-1,267.2	1,285.8	0.00	0.00	
8,800.0	0.00	0.00	8,683.4	-217.8	-1,267.2	1,285.8	0.00	0.00	
8,900.0	0.00	0.00	8,783.4	-217.8	-1,267.2	1,285.8	0.00	0.00	
9,000.0	0.00	0.00	8,883.4	-217.8	-1,267.2	1,285.8	0.00	0.00	
9,100.0	0.00	0.00	8,983.4	-217.8	-1,267.2	1,285.8	0.00	0.00	
9,200.0	0.00	0.00	9,083.4	-217.8	-1,267.2	1,285.8	0.00	0.00	
9,300.0	0.00	0.00	9,183.4	-217.8	-1,267.2	1,285.8	0.00	0.00	
9,400.0	0.00	0.00	9,283.4	-217.8	-1,267.2	1,285.8	0.00	0.00	
9,500.0	0.00	0.00	9,383.4	-217.8	-1,267.2	1,285.8	0.00	0.00	
9,567.6	0.00	0.00	9,451.0	-217.8	-1,267.2	1,285.8	0.00	0.00	CAMEO

## Planning Report

<b>Database:</b>	USA EDM 5000 Multi Users DB	<b>Local Co-ordinate Reference:</b>	Well 43C-35-795
<b>Company:</b>	Caerus Oil & Gas	<b>TVD Reference:</b>	30' KB @ 8931.0usft
<b>Project:</b>	Garfield County, CO (UTM 12N)	<b>MD Reference:</b>	30' KB @ 8931.0usft
<b>Site:</b>	S36-T7S-R95W (36L)	<b>North Reference:</b>	True
<b>Well:</b>	43C-35-795	<b>Survey Calculation Method:</b>	Minimum Curvature
<b>Wellbore:</b>	OH		
<b>Design:</b>	PLAN #1		

Planned Survey									
Measured Depth (usft)	Inclination (°)	Azimuth (°)	Vertical Depth (usft)	+N/-S (usft)	+E/-W (usft)	Vertical Section (usft)	Dogleg Rate (°/100usft)	Build Rate (°/100u)	Comments / Formations
9,600.0	0.00	0.00	9,483.4	-217.8	-1,267.2	1,285.8	0.00	0.00	
9,700.0	0.00	0.00	9,583.4	-217.8	-1,267.2	1,285.8	0.00	0.00	
9,800.0	0.00	0.00	9,683.4	-217.8	-1,267.2	1,285.8	0.00	0.00	
9,823.6	0.00	0.00	9,707.0	-217.8	-1,267.2	1,285.8	0.00	0.00	ROLLINS
9,900.0	0.00	0.00	9,783.4	-217.8	-1,267.2	1,285.8	0.00	0.00	
9,973.6	0.00	0.00	9,857.0	-217.8	-1,267.2	1,285.8	0.00	0.00	TD at 9973.6 - TD

Targets									
Target Name	Dip Angle (°)	Dip Dir. (°)	TVD (usft)	+N/-S (usft)	+E/-W (usft)	Northing (usft)	Easting (usft)	Latitude	Longitude
43C-35-795 PBHL - hit/miss target - Shape - plan hits target center - Circle (radius 50.0)	0.00	0.00	9,857.0	-217.8	-1,267.2	14,318,993.70	2,500,267.80	39.391539	-107.956863

Formations						
Measured Depth (usft)	Vertical Depth (usft)	Name	Lithology	Dip (°)	Dip Direction (°)	
6,848.4	6,743.0	OHIO_CREEK				
7,250.3	7,138.0	WILLIAMS_FORK				
7,954.6	7,838.0	TOP_GAS				
9,567.6	9,451.0	CAMEO				
9,823.6	9,707.0	ROLLINS				
9,973.6	9,857.0	TD				

Plan Annotations					
Measured Depth (usft)	Vertical Depth (usft)	+N/-S (usft)	+E/-W (usft)	Comment	
400.0	400.0	0.0	0.0	Start Build 3.00	
533.3	533.2	0.0	-4.7	Start DLS 2.00 TFO -15.69	
869.1	866.0	-5.3	-46.9	Start 6454.5 hold at 869.1 MD	
7,323.6	7,210.0	-209.4	-1,218.8	Start Drop -2.00	
7,854.6	7,738.0	-217.8	-1,267.2	Start 2119.0 hold at 7854.6 MD	
9,973.6	9,857.0	-217.8	-1,267.2	TD at 9973.6	