

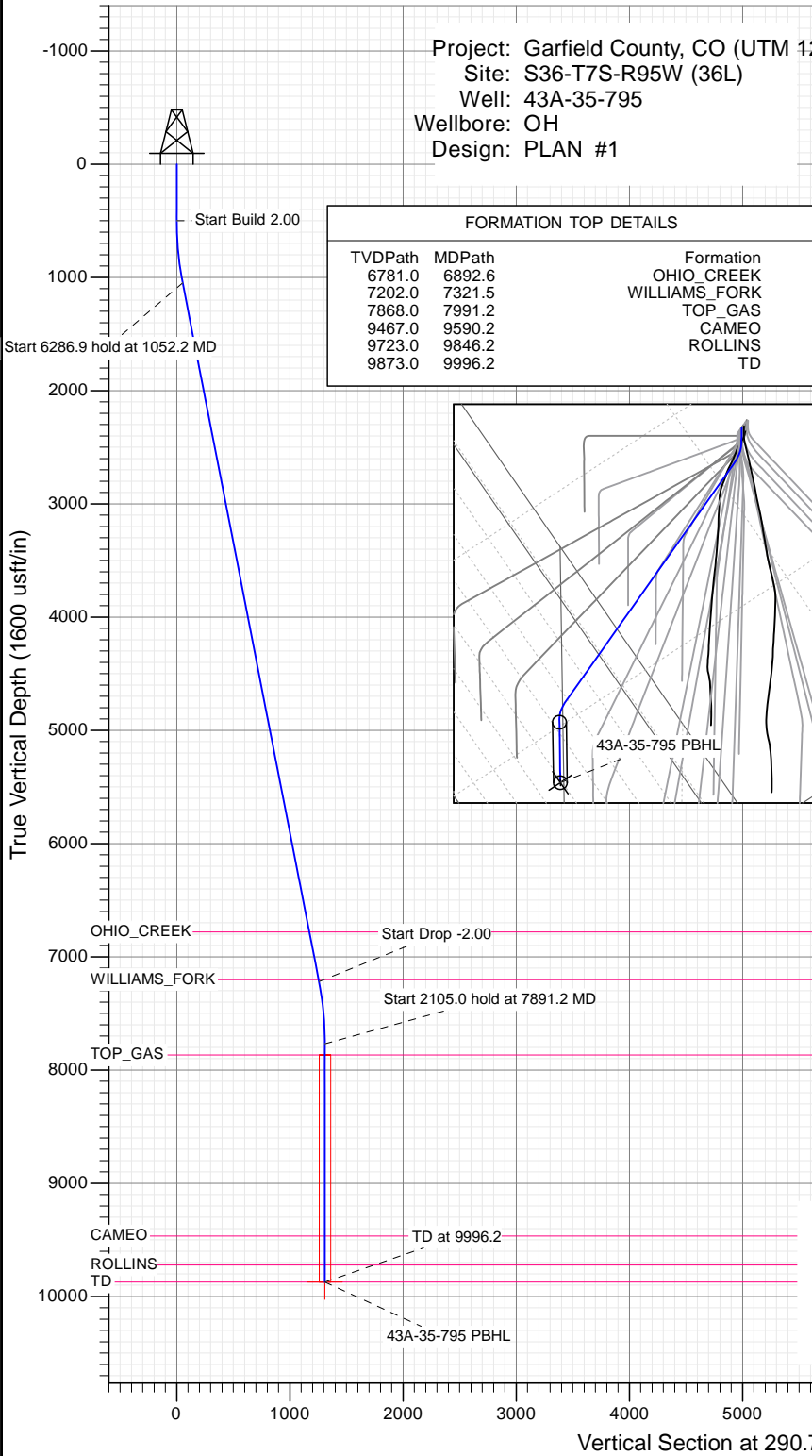


SECTION DETAILS

Sec	MD	Inc	Azi	TVD	+N/-S	+E/-W	Dleg	TFace	VSect	Target
1	0.0	0.00	0.00	0.0	0.0	0.0	0.00	0.00	0.0	
2	500.0	0.00	0.00	500.0	0.0	0.0	0.00	0.00	0.0	
3	1052.2	11.04	290.77	1048.7	18.8	-49.6	2.00	290.77	53.0	
4	7339.1	11.04	290.77	7219.3	445.8	-1175.6	0.00	0.00	1257.3	
5	7891.2	0.00	0.00	7768.0	464.6	-1225.2	2.00	180.00	1310.4	
6	9996.2	0.00	0.00	9873.0	464.6	-1225.2	0.00	0.00	1310.4	43A-35-795 PBHL

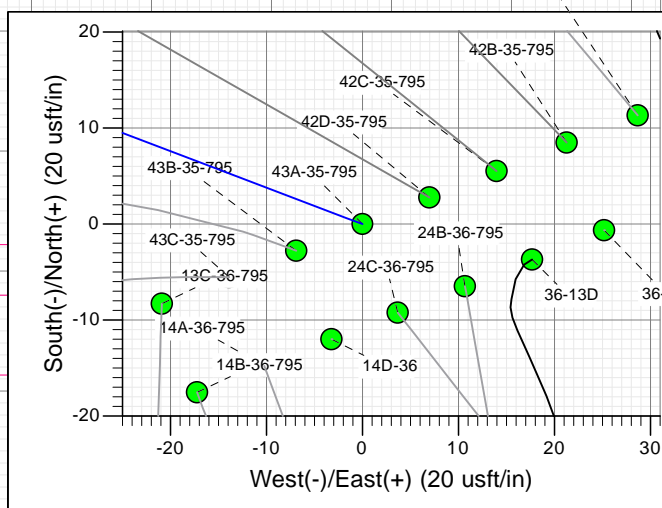
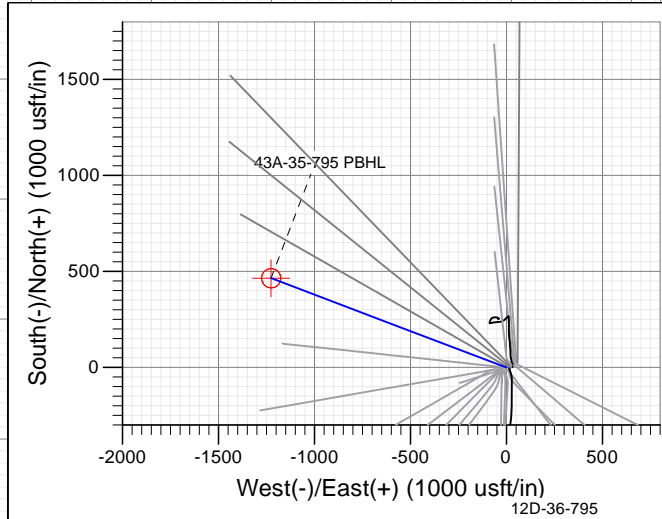
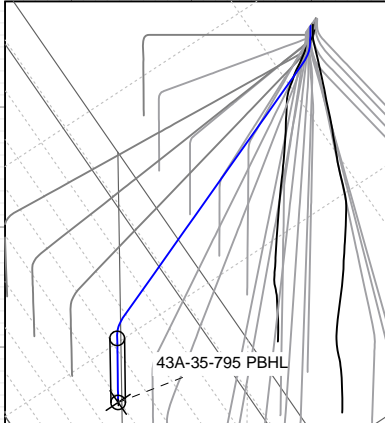
Project: Garfield County, CO (UTM 12
 Site: S36-T7S-R95W (36L)
 Well: 43A-35-795
 Wellbore: OH
 Design: PLAN #1

Type	Target	Azimuth	Origin Type	N/S	E/W	From TVD
TD	No Target (Freehand)	290.77	Slot	0.0	0.0	0.0
Name		TVD	+N/-S	+E/-W	Latitude	Longitude
43A-35-795 PBHL		9873.0	464.6	-1225.2	39.393427	-107.956665



FORMATION TOP DETAILS

TVDPPath	MDPath	Formation
6781.0	6892.6	OHIO_CREEK
7202.0	7321.5	WILLIAMS_FORK
7868.0	7991.2	TOP_GAS
9467.0	9590.2	CAMEO
9723.0	9846.2	ROLLINS
9873.0	9996.2	TD



T M
 Azimuths to True North
 Magnetic North: 9.42°
 Magnetic Field
 Strength: 51881.2snT
 Dip Angle: 65.60°
 Date: 12/14/2015
 Model: HDGM

CASING DETAILS

No casing data is available



WELL DETAILS: 43A-35-795

+N/-S	+E/-W	Northing	Ground Level:	8901.0
0.0	0.0	14319260.20	Easting	2501540.60
			Latitude	39.392152
			Longitude	-107.952332

Planning Report

Database: USA EDM 5000 Multi Users DB	Local Co-ordinate Reference: Well 43A-35-795
Company: Caerus Oil & Gas	TVD Reference: 30' KB @ 8931.0usft
Project: Garfield County, CO (UTM 12N)	MD Reference: 30' KB @ 8931.0usft
Site: S36-T7S-R95W (36L)	North Reference: True
Well: 43A-35-795	Survey Calculation Method: Minimum Curvature
Wellbore: OH	
Design: PLAN #1	

Project Garfield County, CO (UTM 12N)			
Map System: Universal Transverse Mercator (US Survey Feet)	System Datum: Mean Sea Level		
Geo Datum: NAD 1927 - Western US			
Map Zone: Zone 12N (114 W to 108 W)			

Site S36-T7S-R95W (36L)			
Site Position:	Northing: 14,319,276.10 usft	Latitude: 39.392190	
From: Map	Easting: 2,501,602.10 usft	Longitude: -107.952113	
Position Uncertainty: 0.0 usft	Slot Radius: 13-3/16"	Grid Convergence: 1.94 °	

Well 43A-35-795			
Well Position	+N/-S 0.0 usft	Northing: 14,319,260.20 usft	Latitude: 39.392152
	+E/-W 0.0 usft	Easting: 2,501,540.60 usft	Longitude: -107.952332
Position Uncertainty	0.0 usft	Wellhead Elevation: 0.0 usft	Ground Level: 8,901.0 usft

Wellbore OH					
Magnetics	Model Name	Sample Date	Declination (°)	Dip Angle (°)	Field Strength (nT)
	HDGM	12/14/2015	9.42	65.60	51,881

Design PLAN #1				
Audit Notes:				
Version:	Phase: PLAN	Tie On Depth: 0.0		
Vertical Section:	Depth From (TVD) (usft)	+N/-S (usft)	+E/-W (usft)	Direction (°)
	0.0	0.0	0.0	290.77

Plan Sections										
Measured Depth (usft)	Inclination (°)	Azimuth (°)	Vertical Depth (usft)	+N/-S (usft)	+E/-W (usft)	Dogleg Rate (°/100usft)	Build Rate (°/100usft)	Turn Rate (°/100usft)	TFO (°)	Target
0.0	0.00	0.00	0.0	0.0	0.0	0.00	0.00	0.00	0.00	
500.0	0.00	0.00	500.0	0.0	0.0	0.00	0.00	0.00	0.00	
1,052.2	11.04	290.77	1,048.7	18.8	-49.6	2.00	2.00	0.00	290.77	
7,339.1	11.04	290.77	7,219.3	445.8	-1,175.6	0.00	0.00	0.00	0.00	
7,891.2	0.00	0.00	7,768.0	464.6	-1,225.2	2.00	-2.00	0.00	180.00	
9,996.2	0.00	0.00	9,873.0	464.6	-1,225.2	0.00	0.00	0.00	0.00	43A-35-795 PBHL

Planning Report

Database:	USA EDM 5000 Multi Users DB	Local Co-ordinate Reference:	Well 43A-35-795
Company:	Caerus Oil & Gas	TVD Reference:	30' KB @ 8931.0usft
Project:	Garfield County, CO (UTM 12N)	MD Reference:	30' KB @ 8931.0usft
Site:	S36-T7S-R95W (36L)	North Reference:	True
Well:	43A-35-795	Survey Calculation Method:	Minimum Curvature
Wellbore:	OH		
Design:	PLAN #1		

Planned Survey									
Measured Depth (usft)	Inclination (°)	Azimuth (°)	Vertical Depth (usft)	+N/-S (usft)	+E/-W (usft)	Vertical Section (usft)	Dogleg Rate (°/100usft)	Build Rate (°/100u)	Comments / Formations
0.0	0.00	0.00	0.0	0.0	0.0	0.0	0.00	0.00	
100.0	0.00	0.00	100.0	0.0	0.0	0.0	0.00	0.00	
200.0	0.00	0.00	200.0	0.0	0.0	0.0	0.00	0.00	
300.0	0.00	0.00	300.0	0.0	0.0	0.0	0.00	0.00	
400.0	0.00	0.00	400.0	0.0	0.0	0.0	0.00	0.00	
500.0	0.00	0.00	500.0	0.0	0.0	0.0	0.00	0.00	Start Build 2.00
600.0	2.00	290.77	600.0	0.6	-1.6	1.7	2.00	2.00	
700.0	4.00	290.77	699.8	2.5	-6.5	7.0	2.00	2.00	
800.0	6.00	290.77	799.5	5.6	-14.7	15.7	2.00	2.00	
900.0	8.00	290.77	898.7	9.9	-26.1	27.9	2.00	2.00	
1,000.0	10.00	290.77	997.5	15.4	-40.7	43.5	2.00	2.00	
1,052.2	11.04	290.77	1,048.7	18.8	-49.6	53.0	2.00	2.00	Start 6286.9 hold at 1052.2 MD
1,100.0	11.04	290.77	1,095.7	22.1	-58.2	62.2	0.00	0.00	
1,200.0	11.04	290.77	1,193.8	28.9	-76.1	81.4	0.00	0.00	
1,300.0	11.04	290.77	1,292.0	35.6	-94.0	100.5	0.00	0.00	
1,400.0	11.04	290.77	1,390.1	42.4	-111.9	119.7	0.00	0.00	
1,500.0	11.04	290.77	1,488.3	49.2	-129.8	138.8	0.00	0.00	
1,600.0	11.04	290.77	1,586.4	56.0	-147.7	158.0	0.00	0.00	
1,700.0	11.04	290.77	1,684.6	62.8	-165.6	177.1	0.00	0.00	
1,800.0	11.04	290.77	1,782.7	69.6	-183.5	196.3	0.00	0.00	
1,900.0	11.04	290.77	1,880.9	76.4	-201.5	215.5	0.00	0.00	
2,000.0	11.04	290.77	1,979.0	83.2	-219.4	234.6	0.00	0.00	
2,100.0	11.04	290.77	2,077.2	90.0	-237.3	253.8	0.00	0.00	
2,200.0	11.04	290.77	2,175.3	96.8	-255.2	272.9	0.00	0.00	
2,300.0	11.04	290.77	2,273.5	103.6	-273.1	292.1	0.00	0.00	
2,400.0	11.04	290.77	2,371.6	110.4	-291.0	311.2	0.00	0.00	
2,500.0	11.04	290.77	2,469.8	117.2	-308.9	330.4	0.00	0.00	
2,600.0	11.04	290.77	2,567.9	123.9	-326.8	349.5	0.00	0.00	
2,700.0	11.04	290.77	2,666.1	130.7	-344.7	368.7	0.00	0.00	
2,800.0	11.04	290.77	2,764.2	137.5	-362.6	387.8	0.00	0.00	
2,900.0	11.04	290.77	2,862.4	144.3	-380.6	407.0	0.00	0.00	
3,000.0	11.04	290.77	2,960.5	151.1	-398.5	426.2	0.00	0.00	
3,100.0	11.04	290.77	3,058.7	157.9	-416.4	445.3	0.00	0.00	
3,200.0	11.04	290.77	3,156.8	164.7	-434.3	464.5	0.00	0.00	
3,300.0	11.04	290.77	3,255.0	171.5	-452.2	483.6	0.00	0.00	
3,400.0	11.04	290.77	3,353.1	178.3	-470.1	502.8	0.00	0.00	
3,500.0	11.04	290.77	3,451.3	185.1	-488.0	521.9	0.00	0.00	
3,600.0	11.04	290.77	3,549.4	191.9	-505.9	541.1	0.00	0.00	
3,700.0	11.04	290.77	3,647.6	198.7	-523.8	560.2	0.00	0.00	
3,800.0	11.04	290.77	3,745.7	205.4	-541.7	579.4	0.00	0.00	
3,900.0	11.04	290.77	3,843.8	212.2	-559.7	598.5	0.00	0.00	
4,000.0	11.04	290.77	3,942.0	219.0	-577.6	617.7	0.00	0.00	
4,100.0	11.04	290.77	4,040.1	225.8	-595.5	636.9	0.00	0.00	
4,200.0	11.04	290.77	4,138.3	232.6	-613.4	656.0	0.00	0.00	
4,300.0	11.04	290.77	4,236.4	239.4	-631.3	675.2	0.00	0.00	
4,400.0	11.04	290.77	4,334.6	246.2	-649.2	694.3	0.00	0.00	
4,500.0	11.04	290.77	4,432.7	253.0	-667.1	713.5	0.00	0.00	
4,600.0	11.04	290.77	4,530.9	259.8	-685.0	732.6	0.00	0.00	
4,700.0	11.04	290.77	4,629.0	266.6	-702.9	751.8	0.00	0.00	
4,800.0	11.04	290.77	4,727.2	273.4	-720.8	770.9	0.00	0.00	
4,900.0	11.04	290.77	4,825.3	280.2	-738.8	790.1	0.00	0.00	
5,000.0	11.04	290.77	4,923.5	287.0	-756.7	809.3	0.00	0.00	

Planning Report

Database:	USA EDM 5000 Multi Users DB	Local Co-ordinate Reference:	Well 43A-35-795
Company:	Caerus Oil & Gas	TVD Reference:	30' KB @ 8931.0usft
Project:	Garfield County, CO (UTM 12N)	MD Reference:	30' KB @ 8931.0usft
Site:	S36-T7S-R95W (36L)	North Reference:	True
Well:	43A-35-795	Survey Calculation Method:	Minimum Curvature
Wellbore:	OH		
Design:	PLAN #1		

Planned Survey									
Measured Depth (usft)	Inclination (°)	Azimuth (°)	Vertical Depth (usft)	+N/-S (usft)	+E/-W (usft)	Vertical Section (usft)	Dogleg Rate (°/100usft)	Build Rate (°/100u)	Comments / Formations
5,100.0	11.04	290.77	5,021.6	293.7	-774.6	828.4	0.00	0.00	
5,200.0	11.04	290.77	5,119.8	300.5	-792.5	847.6	0.00	0.00	
5,300.0	11.04	290.77	5,217.9	307.3	-810.4	866.7	0.00	0.00	
5,400.0	11.04	290.77	5,316.1	314.1	-828.3	885.9	0.00	0.00	
5,500.0	11.04	290.77	5,414.2	320.9	-846.2	905.0	0.00	0.00	
5,600.0	11.04	290.77	5,512.4	327.7	-864.1	924.2	0.00	0.00	
5,700.0	11.04	290.77	5,610.5	334.5	-882.0	943.3	0.00	0.00	
5,800.0	11.04	290.77	5,708.7	341.3	-900.0	962.5	0.00	0.00	
5,900.0	11.04	290.77	5,806.8	348.1	-917.9	981.6	0.00	0.00	
6,000.0	11.04	290.77	5,905.0	354.9	-935.8	1,000.8	0.00	0.00	
6,100.0	11.04	290.77	6,003.1	361.7	-953.7	1,020.0	0.00	0.00	
6,200.0	11.04	290.77	6,101.3	368.5	-971.6	1,039.1	0.00	0.00	
6,300.0	11.04	290.77	6,199.4	375.3	-989.5	1,058.3	0.00	0.00	
6,400.0	11.04	290.77	6,297.5	382.0	-1,007.4	1,077.4	0.00	0.00	
6,500.0	11.04	290.77	6,395.7	388.8	-1,025.3	1,096.6	0.00	0.00	
6,600.0	11.04	290.77	6,493.8	395.6	-1,043.2	1,115.7	0.00	0.00	
6,700.0	11.04	290.77	6,592.0	402.4	-1,061.1	1,134.9	0.00	0.00	
6,800.0	11.04	290.77	6,690.1	409.2	-1,079.1	1,154.0	0.00	0.00	
6,892.6	11.04	290.77	6,781.0	415.5	-1,095.6	1,171.8	0.00	0.00	OHIO_CREEK
6,900.0	11.04	290.77	6,788.3	416.0	-1,097.0	1,173.2	0.00	0.00	
7,000.0	11.04	290.77	6,886.4	422.8	-1,114.9	1,192.4	0.00	0.00	
7,100.0	11.04	290.77	6,984.6	429.6	-1,132.8	1,211.5	0.00	0.00	
7,200.0	11.04	290.77	7,082.7	436.4	-1,150.7	1,230.7	0.00	0.00	
7,300.0	11.04	290.77	7,180.9	443.2	-1,168.6	1,249.8	0.00	0.00	
7,321.5	11.04	290.77	7,202.0	444.6	-1,172.5	1,253.9	0.00	0.00	WILLIAMS_FORK
7,339.1	11.04	290.77	7,219.3	445.8	-1,175.6	1,257.3	0.00	0.00	Start Drop -2.00
7,400.0	9.83	290.77	7,279.1	449.7	-1,185.9	1,268.3	2.00	-2.00	
7,500.0	7.83	290.77	7,378.0	455.2	-1,200.3	1,283.7	2.00	-2.00	
7,600.0	5.83	290.77	7,477.2	459.4	-1,211.4	1,295.6	2.00	-2.00	
7,700.0	3.83	290.77	7,576.9	462.4	-1,219.2	1,304.0	2.00	-2.00	
7,800.0	1.83	290.77	7,676.8	464.1	-1,223.8	1,308.9	2.00	-2.00	
7,891.2	0.00	0.00	7,768.0	464.6	-1,225.2	1,310.4	2.00	-2.00	Start 2105.0 hold at 7891.2 MD
7,900.0	0.00	0.00	7,776.7	464.6	-1,225.2	1,310.4	0.00	0.00	
7,991.2	0.00	0.00	7,868.0	464.6	-1,225.2	1,310.4	0.00	0.00	TOP_GAS
8,000.0	0.00	0.00	7,876.7	464.6	-1,225.2	1,310.4	0.00	0.00	
8,100.0	0.00	0.00	7,976.7	464.6	-1,225.2	1,310.4	0.00	0.00	
8,200.0	0.00	0.00	8,076.7	464.6	-1,225.2	1,310.4	0.00	0.00	
8,300.0	0.00	0.00	8,176.7	464.6	-1,225.2	1,310.4	0.00	0.00	
8,400.0	0.00	0.00	8,276.7	464.6	-1,225.2	1,310.4	0.00	0.00	
8,500.0	0.00	0.00	8,376.7	464.6	-1,225.2	1,310.4	0.00	0.00	
8,600.0	0.00	0.00	8,476.7	464.6	-1,225.2	1,310.4	0.00	0.00	
8,700.0	0.00	0.00	8,576.7	464.6	-1,225.2	1,310.4	0.00	0.00	
8,800.0	0.00	0.00	8,676.7	464.6	-1,225.2	1,310.4	0.00	0.00	
8,900.0	0.00	0.00	8,776.7	464.6	-1,225.2	1,310.4	0.00	0.00	
9,000.0	0.00	0.00	8,876.7	464.6	-1,225.2	1,310.4	0.00	0.00	
9,100.0	0.00	0.00	8,976.7	464.6	-1,225.2	1,310.4	0.00	0.00	
9,200.0	0.00	0.00	9,076.7	464.6	-1,225.2	1,310.4	0.00	0.00	
9,300.0	0.00	0.00	9,176.7	464.6	-1,225.2	1,310.4	0.00	0.00	
9,400.0	0.00	0.00	9,276.7	464.6	-1,225.2	1,310.4	0.00	0.00	
9,500.0	0.00	0.00	9,376.7	464.6	-1,225.2	1,310.4	0.00	0.00	
9,590.2	0.00	0.00	9,467.0	464.6	-1,225.2	1,310.4	0.00	0.00	CAMEO
9,600.0	0.00	0.00	9,476.7	464.6	-1,225.2	1,310.4	0.00	0.00	

Planning Report

Database:	USA EDM 5000 Multi Users DB	Local Co-ordinate Reference:	Well 43A-35-795
Company:	Caerus Oil & Gas	TVD Reference:	30' KB @ 8931.0usft
Project:	Garfield County, CO (UTM 12N)	MD Reference:	30' KB @ 8931.0usft
Site:	S36-T7S-R95W (36L)	North Reference:	True
Well:	43A-35-795	Survey Calculation Method:	Minimum Curvature
Wellbore:	OH		
Design:	PLAN #1		

Planned Survey									
Measured Depth (usft)	Inclination (°)	Azimuth (°)	Vertical Depth (usft)	+N/-S (usft)	+E/-W (usft)	Vertical Section (usft)	Dogleg Rate (°/100usft)	Build Rate (°/100u)	Comments / Formations
9,700.0	0.00	0.00	9,576.7	464.6	-1,225.2	1,310.4	0.00	0.00	
9,800.0	0.00	0.00	9,676.7	464.6	-1,225.2	1,310.4	0.00	0.00	
9,846.2	0.00	0.00	9,723.0	464.6	-1,225.2	1,310.4	0.00	0.00	ROLLINS
9,900.0	0.00	0.00	9,776.7	464.6	-1,225.2	1,310.4	0.00	0.00	
9,996.2	0.00	0.00	9,873.0	464.6	-1,225.2	1,310.4	0.00	0.00	TD at 9996.2 - TD

Targets									
Target Name	Dip Angle (°)	Dip Dir. (°)	TVD (usft)	+N/-S (usft)	+E/-W (usft)	Northing (usft)	Easting (usft)	Latitude	Longitude
43A-35-795 PBHL - hit/miss target - Shape - plan hits target center - Circle (radius 50.0)	0.00	0.00	9,873.0	464.6	-1,225.2	14,319,683.20	2,500,300.40	39.393427	-107.956665

Formations						
Measured Depth (usft)	Vertical Depth (usft)	Name	Lithology	Dip (°)	Dip Direction (°)	
6,892.6	6,781.0	OHIO_CREEK				
7,321.5	7,202.0	WILLIAMS_FORK				
7,991.2	7,868.0	TOP_GAS				
9,590.2	9,467.0	CAMEO				
9,846.2	9,723.0	ROLLINS				
9,996.2	9,873.0	TD				

Plan Annotations				
Measured Depth (usft)	Vertical Depth (usft)	Local Coordinates		Comment
		+N/-S (usft)	+E/-W (usft)	
500.0	500.0	0.0	0.0	Start Build 2.00
1,052.2	1,048.7	18.8	-49.6	Start 6286.9 hold at 1052.2 MD
7,339.1	7,219.3	445.8	-1,175.6	Start Drop -2.00
7,891.2	7,768.0	464.6	-1,225.2	Start 2105.0 hold at 7891.2 MD
9,996.2	9,873.0	464.6	-1,225.2	TD at 9996.2