

1801 Broadway
Suite 500
Denver, Colorado 80202



Allison Linz
Regulatory Technician
Tel: 303.398.0355
E-mail: alinz@gwogco.com

September 28, 2015

Colorado Oil and Gas Conservation Commission
1120 Lincoln Street, Suite 801
Denver, Colorado 80203

RE: **Proposed Wellbore Spacing Unit**
Bower FD 11-122HN

Niobrara New Drill
Township 6 North, Range 67 West, 6th P.M.
NESE Section 10
Weld County, Colorado

Dear Director:

Great Western Operating Company, LLC is planning to drill the above captioned well in accordance with the provisions of COGCC Rule 318A.e.

Great Western proposed wellbore spacing unit consists of:

- **N2 Section 11**
- **320 Acres**

The 30 day notification time period has passed and we have not received any objections to such well locations or proposed spacing unit, therefore Great Western hereby requests the Director to approve the above mentioned well. Great Western Operating Company, LLC respectfully requests that the COGCC review the enclosed map illustrating the proposed wellbore spacing unit.

Respectfully,

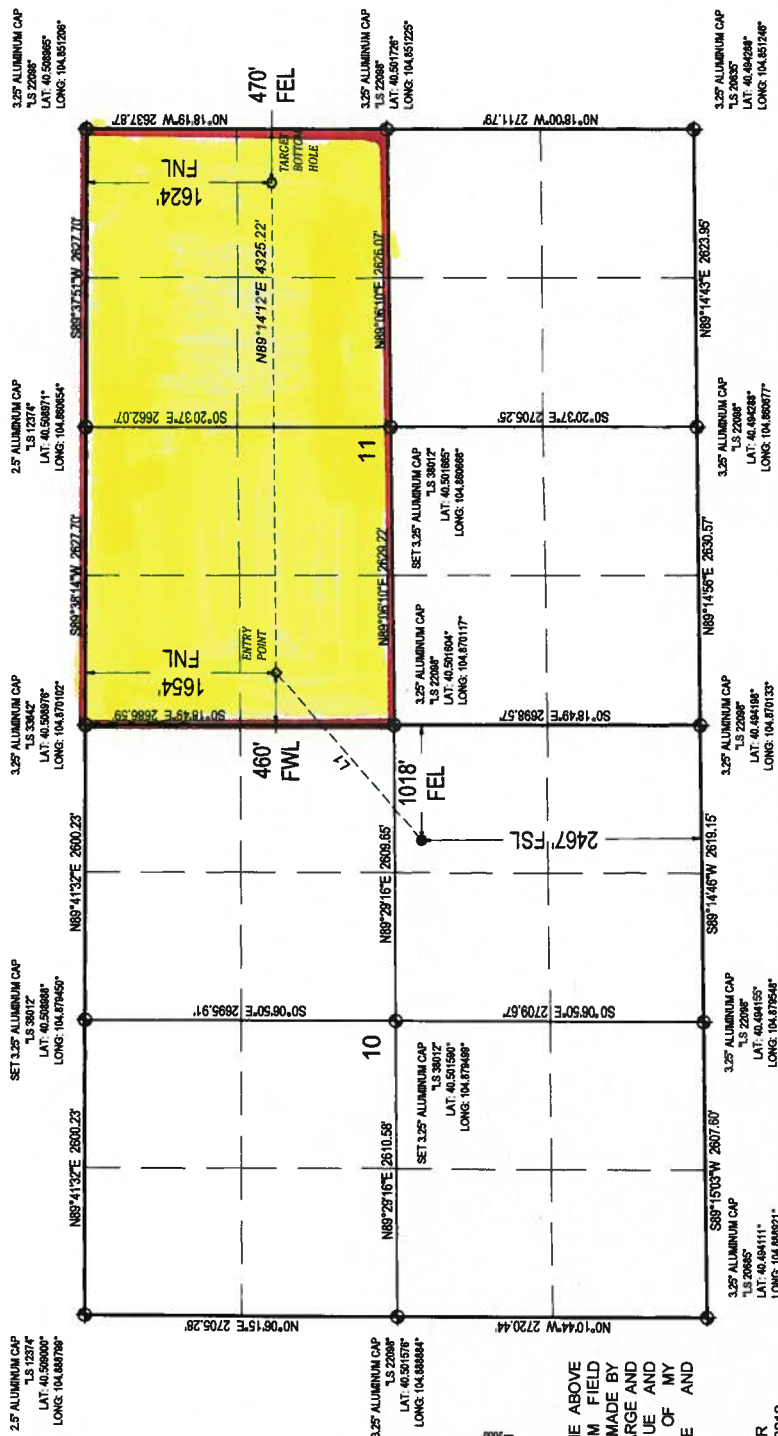
Allison Linz

Allison Linz
Regulatory Technician
Great Western Operating Company, LLC

T6N, R67W, 6TH P.M.

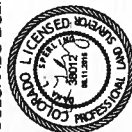
- NOTE: UNITS SHOWN ARE IN U.S. SURVEY FEET AS MEASURED ON GROUND. LATITUDE AND LONGITUDE IS SHOWN BASED UPON COLORADO NORTH ZONE STATE PLANE (NAD83).

LINE TABLE		
LINE	DIRECTION	LENGTH
L1	N48°57'49"E	1950.18'



THIS IS TO CERTIFY THAT THE ABOVE
PLAT WAS PREPARED FROM FIELD
NOTES OF ACTUAL SURVEYS MADE BY
ME OR UNDER MY DIRECT CHARGE AND
THAT THE SAME ARE TRUE AND
CORRECT TO THE BEST OF MY
PROFESSIONAL KNOWLEDGE AND
BELIEF.

DANA L. SPERLING
PROFESSIONAL LAND SURVEYOR
COLORADO LICENSE NUMBER 38012



BASIS OF BEARINGS
BASIS OF BEARINGS IS A G.P.S. OBSERVATION
BASIS OF ELEVATION

PUBLISHED VALUES OF NGS CONTROL STATION "Q 136" WITH AN ELEVATION OF 4768 FEET (NAVD 88)

VO
OLSSON
ASSOCIATES

4680 Table Mountain Drive, Suite 200
Golden, CO 80403
TEL 303.237.2072
FAX 303.237.2659
www.obssociety.com

NAD 83 (TARGET BOTTOM HOLE)		
LATITUDE = 40°30'16.23" (40.504508°)		
LONGITUDE = 104°51'10.47" (104.852908°)		
NAD 27 (TARGET BOTTOM HOLE)		
LATITUDE = 40°30'16.30" (40.504527°)		
LONGITUDE = 104°51'08.57" (104.852382°)		
NAD 83 (ENTRY POINT)		
LATITUDE = 40°30'15.97" (40.504435°)		
LONGITUDE = 104°52'06.45" (104.868457°)		
NAD 27 (ENTRY POINT)		
LATITUDE = 40°30'16.03" (40.504454°)		
LONGITUDE = 104°52'04.55" (104.867930°)		

PDOP = 2.7

NAD 83 (SURFACE LOCATION)

NAME	DATE ACQ.	TIME OF OBS.	LATITUDE	LONGITUDE	ALTITUDE	WIND DIRECTION	WIND SPEED	SEA STATE	WEATHER	REMARKS
			$40^{\circ}30'15.97''$	(40.504435°)	$40^{\circ}30'03.43''$	(40.500953°)				
			$104^{\circ}52'06.45''$	(104.868457°)	$104^{\circ}52'25.61''$	(104.873779°)				

NAD 27 (ENTRY POINT)	NAD 27 (SURFACE LOCATION)
LATITUDE = 40°30'16.03" (40.504454°)	LATITUDE = 40°30'03.50" (40.500972°)
LONGITUDE = 104°52'04.55" (104.867390°)	LONGITUDE = 104°52'23.71" (104.873259°)

BOWER FD 11-122HN
ELEV. UNGRADED GROUND: 4876.8'

GREAT WESTERN OIL & GAS COMPANY

BOWER FD 11-122HN
NE1/4, SE1/4, SECTION 10, T6N, R67E
WELD COUNTY, COLORADO

SURVEYED BY: Dana L. Sperling and J.S.	DATE: 05.21.15
DRAWN BY: LHG	DATE DRAWN: 05.26.2015
SCALE: 1" = 1000'	REVISED: 06.11.2015

WELL LOCATION PLAT