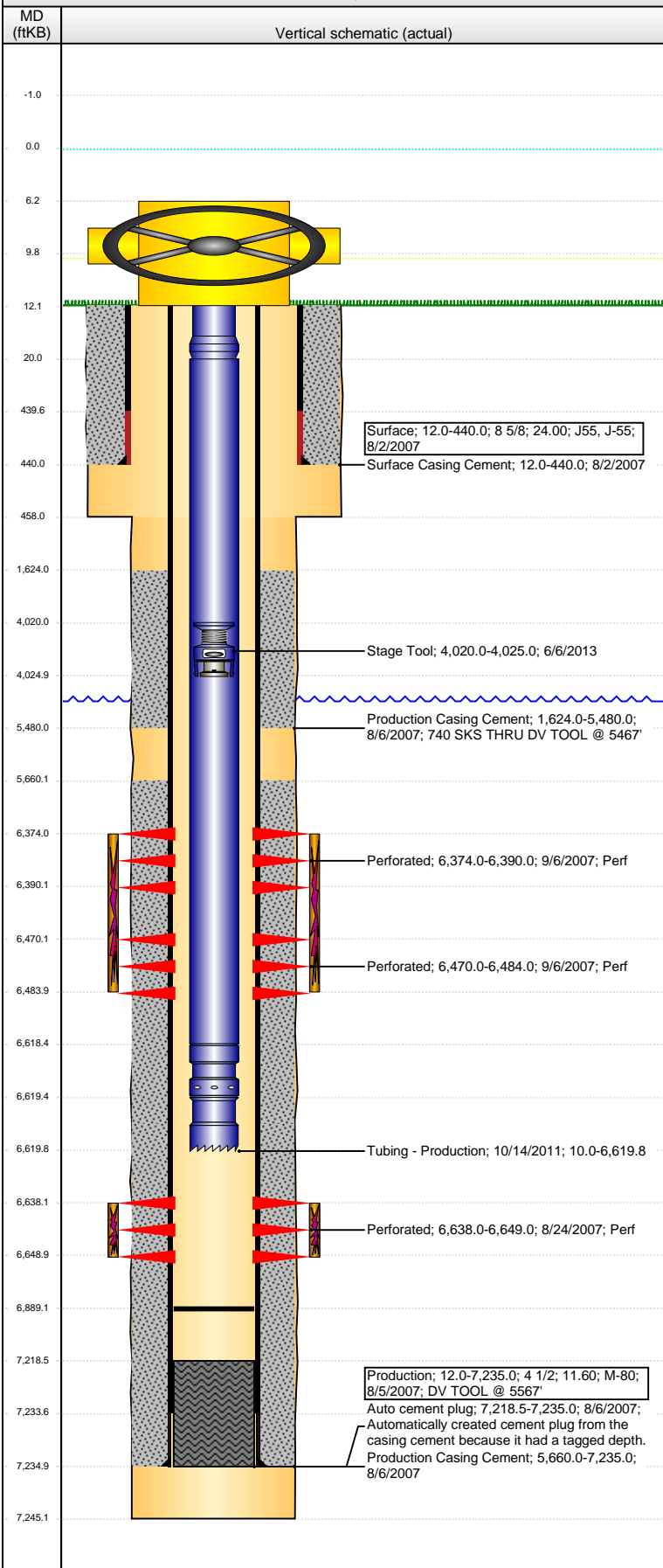


Well Name: WELLS RANCH USX BB01-06

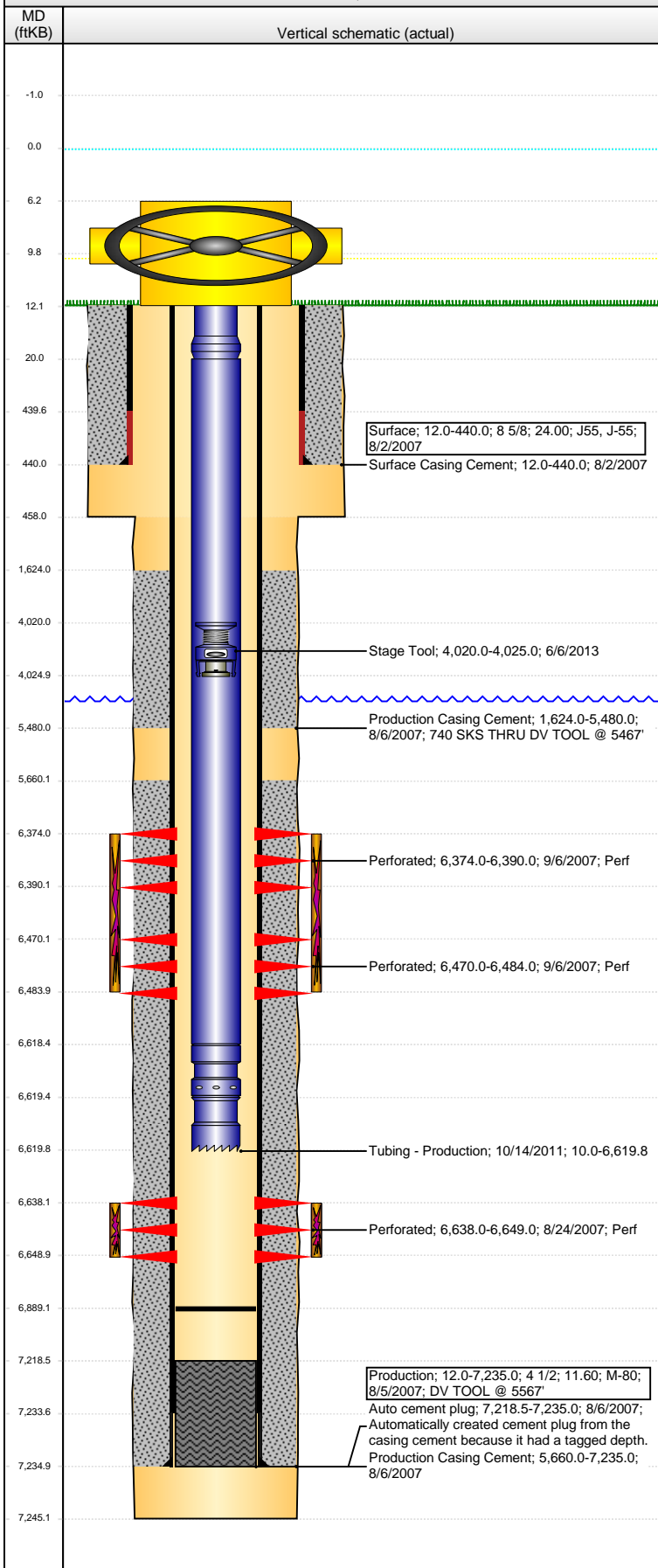
VERTICAL - ORIGINAL HOLE, 1/20/2016 11:22:21 AM



Well Header			
API	Business Unit	District	Well Config
05-123-26098	DJ BASIN	15	VERTICAL
Original KB Elevation (ft)	KB - GL / MSL (ftKB)	Spud Date	P & A Date
4,724.00	12.00	8/1/2007	
Comment			
DV TOOL @ +/- 5467'			
Directions To Well			
WCR 67 & WCR 68, E 0.2, S 2.6 TO COW CAMP, E 0.4, SE 1.5, S AND SE 0.3 INTO LOCATION.			
Congressional Location			
Quarter 1	Quarter 2	Quarter 3	Quarter 4
		SE	NW
Section	Township	Twnshp N...	Range
1	5 N		63 W
Rng E/W Dir			
W			
Bottom Hole Location			
North-South Distance (ft)	From N or S Line	East-West Distance (ft)	From E or W Line
Plug Back Total Depths			
Date	Depth (ftKB)	Method	Com
8/5/2007	7,218.5	CASING TALLY	FLOAT COLLAR
8/24/2007	7,214.0	CASED HOLE LOG	DEPTH-LOGGER/CBL
9/19/2011	7,009.0	TUBING TALLY	RUN BIT AND SCRAPER PRIOR TO CODELL REF...
10/14/2011	6,889.1	TUBING TALLY	FILL
Wellbore Sections			
Section Des	Size (in)	Act Top, MD (ftKB)	Act Btm, MD (ftKB)
SURFACE	12 1/4	12.0	458.0
PRODUCTION	7 7/8	458.0	7,245.0
Zone Statuses			
Zone Name	Status Date	Status	Fluid Type
NIOBRARA	9/9/2007	PR	
NIOBRARA	3/12/2012	PR	
CODELL	9/9/2007	PR	
CODELL	10/31/2011	PR	
CODELL	3/12/2012	PR	
Job	Prod Method		
DRILLING/CO...			
RE-FRAC, 9/16...			
DRILLING/CO...			
RE-FRAC, 9/16...			
RE-FRAC, 9/16...			
Casing Strings			
Surface, 440.0ftKB			
Casing Description	Run Date	OD (in)	Wt/Len (l...)
Surface	8/2/2007	8 5/8	24.00
Grade	Top, MD (ft...)	MD (ftKB)	
J-55	12.0	440.0	
Production, 7,235.0ftKB			
Casing Description	Run Date	OD (in)	Wt/Len (l...)
Production	8/5/2007	4 1/2	11.60
Grade	Top, MD (ft...)	MD (ftKB)	
M-80	12.0	7,235.0	
Cement			
Description	Top Depth (ftKB)	Bottom Depth (ftKB)	
Surface Casing Cement	12.0	440.0	
Description	Top Depth (ftKB)	Bottom Depth (ftKB)	
Production Casing Cement	1,624.0	5,480.0	
Description	Top Depth (ftKB)	Bottom Depth (ftKB)	
Production Casing Cement	5,660.0	7,235.0	
Tubing Strings			
Tubing Description	Run Date	String...	ID (in)
Tubing - Workstring	6/25/2011	2 3/8	
Wt (lb/ft)	Grade	Len (ft)	Set De...
4.70	J-55	6,608.00	
Tubing Description	Run Date	String...	ID (in)
Tubing - Frac string	9/20/2011	2 7/8	2.441
Wt (lb/ft)	Grade	Len (ft)	Set De...
6.50	N-80	6,568.04	
Tubing Description	Run Date	String...	ID (in)
Tubing - Frac string	10/11/2011	2 7/8	2.441
Wt (lb/ft)	Grade	Len (ft)	Set De...
6.50	N-80	6,284.85	
Tubing Description	Run Date	String...	ID (in)
Tubing - Production	10/14/2011	2 3/8	1.995
Wt (lb/ft)	Grade	Len (ft)	Set De...
4.70	J-55	6,609.82	
Tubing Components			
Item Des	OD (in)	Wt (lb/ft)	Grade
Pup Joint	2 3/8	4.70	J-55
Jts	Len (ft)	Btm (ftKB)	Btm (TVD) (ftKB)
1	10.00	20.0	
EUE 8rd Tubing	2 3/8	4.70	J-55
214	6,598.32	6,618.3	
Seal Nipple	2 3/8	4.70	N-80
1	1.10	6,619.4	
Notched collar	2 3/8	4.70	J-55
1	0.40	6,619.8	

Well Name: WELLS RANCH USX BB01-06

VERTICAL - ORIGINAL HOLE, 1/20/2016 11:22:23 AM



Perforation Data					
Zone	Bnch/St g	Entered Shot Total	Top (ftKB)	Btm (ftKB)	Date
NIOBRARA, ORIGINAL HOLE	A	64	6,374.00	6,390.00	9/6/2007
NIOBRARA, ORIGINAL HOLE	B	56	6,470.00	6,484.00	9/6/2007
CODELL, ORIGINAL HOLE		44	6,638.00	6,649.00	8/24/2007

Stimulations & Treatments		
Date	Zone	Primary Job Type
9/6/2007	NIOBRARA, ORIGINAL HOLE	DRILLING/COMPLETION - ORIGINAL
Technical Result		Tech Result Note
Comment		

Date	Zone	Primary Job Type
9/6/2007	CODELL, ORIGINAL HOLE	DRILLING/COMPLETION - ORIGINAL
Technical Result		Tech Result Note
Comment		

Date	Zone	Primary Job Type
10/8/2011	CODELL, ORIGINAL HOLE	RE-FRAC
Technical Result		Tech Result Note
Failure		Mechanical
Comment		

ABORTED
 (CODELL): BREAK - 2703 PSI @ 0.8 BPM. ISIP 2846, 5 MIN - 2193. AFTER APPROX. 470 BBLs PRESSURE ON ANNULUS BEGAN TO INCREASE. ANNULUS PRESSURE WAS BLED OFF AND ONCE CLOSE IN QUICKLY RETURNED TO ITS PRESSURE OF 1500 PSI. PUMPS WERE BROUGHT OFF LINE AND ANNULUS WAS BLED OFF AGAIN. WHILE NOT PUMPING ONCE THE ANNULUS WAS CLOSED THE PRESSURE CLIMBED AND LEVELED OFF AT 300 PSI. PRESSURE THEN WAS INCREASED TO 2000 PSI ON THE ANNULUS WITH THE BELIEF THE COMMUNICATION MAY HAVE BEEN THROUGH FORMATION. RETURNED TO PUMPING ON THE TUBING AND ONCE TO RATE OF 14 BPM ANNULUS PRESSURE BEGAN TO RISE AGAIN AND PEAKED AT 2500. ANNULAR BOP OF RIG ONLY GOOD TO 3000 PSI. STOPPED PUMPING AGAIN AND BLED OFF ANNULUS DOWN TO 2000 PSI. BEGAN PUMPING ON TUBING AGAIN ONLY PUMPING AT 10 BPM AND PUMPED 0.5 PSA SAND TO ATTEMPT TO DETERMINE COLLAR LEAK OR FORMATION COMMUNICATION. ANNULUS PRESSURE BEGAN TO RISE AGAIN JUST AFTER SAND ENTERED FORMATION. BACKSIDE PRESSURE THEN WAS BROUGHT TO A WORKING PRESSURE OF 2500 AND ATTEMPTED TO PUMP INTO AGAIN SLOWLY AND SAW COMMUNICATION QUICKLY WITH PRESSURES APPROACHING 2800 PSI ON ANNULUS. ABLE TO FLUSH WELL WITH WATER AT 4 BPM AND CALLED JOB BEFORE MORE SAND AND PRESSURE WERE ENTERED INTO WELLBORE. RIG UNABLE TO WORK ON TUBING BECAUSE OF PRESSURE ON ANNULUS AND TUBING.

Date	Zone	Primary Job Type
10/12/2011	CODELL, ORIGINAL HOLE	RE-FRAC
Technical Result		Tech Result Note
Success		According to Plan
Comment		

(CODELL RF) ISIP 3104, 5 MIN 2513, SHORT SD DUE TO BLENDER HYDRAULIC TANK OVERFILLED, CONTINUED WITH JOB PER DESIGN. WET SAND CAUSED DROP IN DENSITY ON 4PPG. AVERAGES: PRESSURE 4023, TEMP 70.49, pH 10.5, VISC 25.46. POST ISIP 3171, POST 5 MIN 3145, NOLTE POSITIVE

Other In Hole				
Run Date	Des	OD (in)	Top (ftKB)	Btm (ftKB)
6/6/2013	Stage Tool	2	4,020.0	4,025.0

Logs			
Date	Type	Top, MD (ftKB)	Btm, MD (ftKB)
8/5/2007	COMPENSATED DENSITY	2,650.0	7,223.0
8/5/2007	DIFL/DENS/GR/GRD/CAL	439.0	7,243.0
9/24/2007	CBL/CCL/GR	1,490.0	7,213.0
10/1/2014	GYRO	10.0	6,600.0