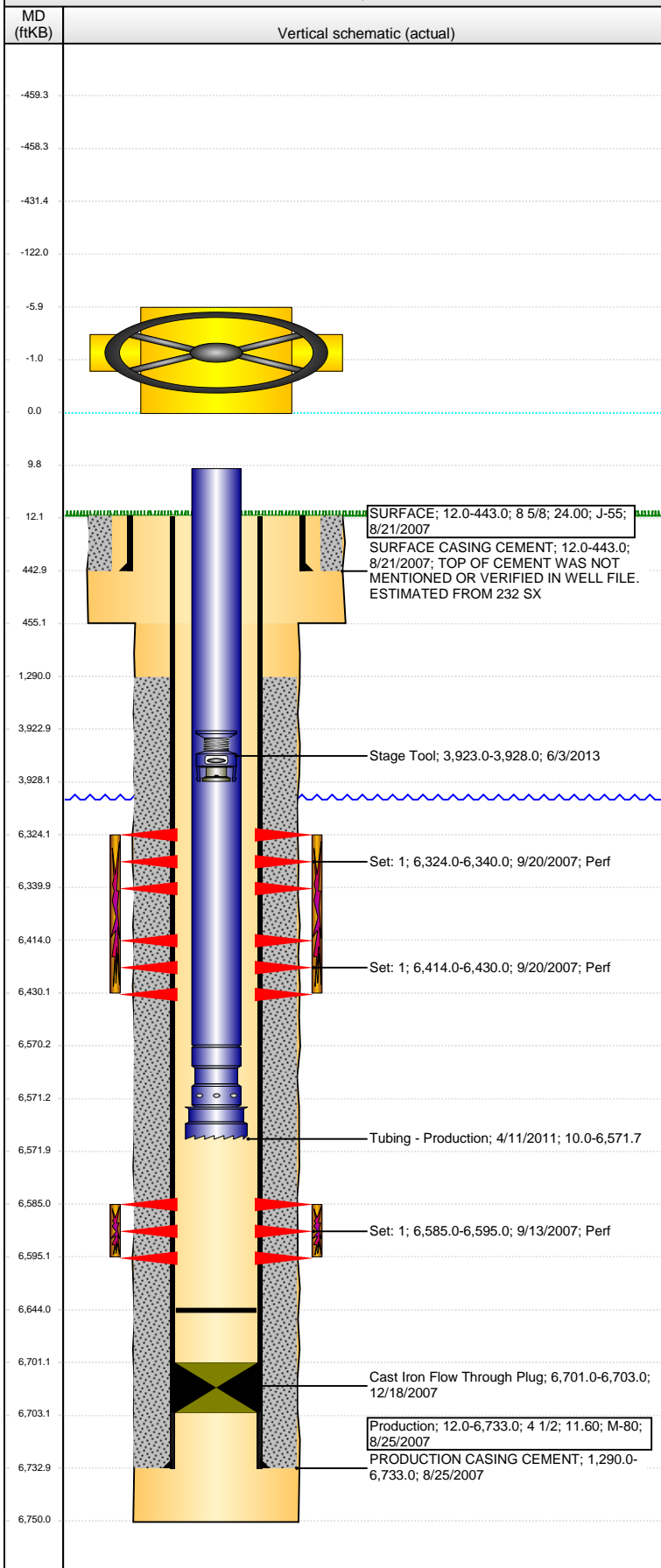


Well Name: WELLS RANCH USX BB01-15

VERTICAL - ORIGINAL HOLE, 1/20/2016 1:06:45 PM



Well Header									
API 05-123-26130		Business Unit DJ BASIN		District 15		Well Config VERTICAL			
Original KB Elevation (ft) 4,679.00		KB - GL / MSL (ftKB) 12.00		Spud Date 8/21/2007		P & A Date			
Comment									
Directions To Well WCR 67 AND WCR 68. E 0.2, S 2.8 TO COW CAMP, E 0.4 AROUND CAMP, SE 2.1 MILES, S 0.3 MILES TO TANK BATTERY, W 100 FT, SW 0.2 INTO LOCATION.									
Congressional Location									
Quarter 1	Quarter 2	Quarter 3 SW	Quarter 4 SE	Section 1	Township 5	Twntshp N...	Range 63	Rng E/W Dir W	
Bottom Hole Location									
North-South Distance (ft)		From N or S Line		East-West Distance (ft)		From E or W Line			
Plug Back Total Depths									
Date	Depth (ftKB)	Method			Com				
9/12/2007	6,714.0	TAG							
4/8/2011	6,644.0	TUBING TALLY							
Wellbore Sections									
Section Des			Size (in)		Act Top, MD (ftKB)		Act Btm, MD (ftKB)		
SURFACE			12 1/4		12.0		455.0		
PRODUCTION			7 7/8		455.0		6,750.0		
Zone Statuses									
Zone Name	Status Date	Status	Fluid Type	Job	Prod Method				
NIOBRARA	9/23/2007	PR	Gas	DRILLING/CO...					
CODELL	9/23/2007	PR							
Casing Strings									
SURFACE, 443.0ftKB									
Casing Description		Run Date	OD (in)	Wt/Len (l...	Grade	Top, MD (ft...	MD (ftKB)		
SURFACE		8/21/2007	8 5/8	24.00	J-55	12.0	443.0		
Production, 6,733.0ftKB									
Casing Description		Run Date	OD (in)	Wt/Len (l...	Grade	Top, MD (ft...	MD (ftKB)		
Production		8/25/2007	4 1/2	11.60	M-80	12.0	6,733.0		
Cement									
Description					Top Depth (ftKB)		Bottom Depth (ftKB)		
SURFACE CASING CEMENT					12.0		443.0		
Description					Top Depth (ftKB)		Bottom Depth (ftKB)		
PRODUCTION CASING CEMENT					1,290.0		6,733.0		
Tubing Strings									
Tubing Description		Run Date	String...	ID (in)	Wt (lb/ft)	Grade	Len (ft)	Set De...	
Tubing		12/18/2007 7	2 3/8	1.995	4.70	J-55	6,664.00		
Tubing Description		Run Date	String...	ID (in)	Wt (lb/ft)	Grade	Len (ft)	Set De...	
Tubing - Production		4/11/2011	2 3/8	1.995	4.70	J-55	6,561.69		
Tubing Components									
Item Des		OD (in)	Wt (lb/ft)	Grade	Jts	Len (ft)	Btm (ftKB)	Btm (TVD) (ftKB)	
EUE 8rd Tubing		2 3/8	4.70	J-55	213	6,560.19	6,570.2		
Pump Seating Nipple		2 3/8	4.70	J-55	1	1.10	6,571.3		
Notched collar		3 1/16			1	0.40	6,571.7		
Perforation Data									
Zone		Bnch/St g	Entered Shot Total	Top (ftKB)		Btm (ftKB)		Date	
NIOBRARA, ORIGINAL HOLE		A	64	6,324.00		6,340.00		9/20/2007	
NIOBRARA, ORIGINAL HOLE		B	64	6,414.00		6,430.00		9/20/2007	
CODELL, ORIGINAL HOLE			40	6,585.00		6,595.00		9/13/2007	

Well Name: WELLS RANCH USX BB01-15

VERTICAL - ORIGINAL HOLE, 1/20/2016 1:06:47 PM

Stimulations & Treatments

Date	Zone	Primary Job Type
9/20/2007	CODELL, ORIGINAL HOLE	DRILLING/COMPLETION - ORIGINAL
Technical Result Success	Tech Result Details According to Plan	Tech Result Note DURING FLUSH THE ACID WAS STRAPPED INCORRECTLY AND 48 BARRELS OF 15% HCL WAS PUMPED INSTEAD OF 24 BBLS.

Comment

Date	Zone	Primary Job Type
9/20/2007	NIOBRARA, ORIGINAL HOLE	DRILLING/COMPLETION - ORIGINAL
Technical Result Success	Tech Result Details According to Plan	Tech Result Note

Comment

Other In Hole

Run Date	Des	OD (in)	Top (ftKB)	Btm (ftKB)
12/18/2007	Cast Iron Flow Through Plug	3.998	6,701.0	6,703.0
6/3/2013	Stage Tool	2	3,923.0	3,928.0

Logs

Date	Type	Top, MD (ftKB)	Btm, MD (ftKB)
8/24/2007	COMPENSATED DENSITY	2,490.0	6,733.0
8/24/2007	INDUCTION	443.0	6,733.0
9/13/2007	CBL/CCL/GR	1,150.0	6,656.0
10/8/2014	GYRO	10.0	6,500.0

