

R
58
W

R
57
W

T10N, R57W, 6th P.M.

WHITING OIL & GAS CORP.

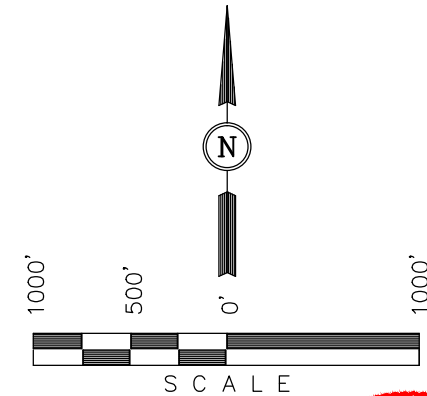
Well location, HORSETAIL #30H-3116 (SURFACE LOCATION), located as shown in the SE 1/4 NE 1/4 of Section 30, T10N, R57W, 6th P.M., Weld County, Colorado.

BASIS OF ELEVATION

SPOT ELEVATION LOCATED AT THE NORTHEAST CORNER OF SECTION 15, T9N, R58W, 6th P.M. TAKEN FROM THE GATEHOOK SPRING, QUADRANGLE, COLORADO, WELD COUNTY, 7.5 MINUTE QUAD (TOPOGRAPHIC MAP) PUBLISHED BY THE UNITED STATES DEPARTMENT OF THE INTERIOR, GEOLOGICAL SURVEY. SAID ELEVATION IS MARKED AS BEING 4679 FEET.

BASIS OF BEARINGS

BASIS OF BEARINGS IS A G.P.S. OBSERVATION.



CERTIFICATE

THIS IS TO CERTIFY THAT THE ABOVE PLAT WAS PREPARED FROM FIELD NOTES OF ACTUAL SURVEYS MADE BY ME OR UNDER MY SUPERVISION AND THAT THE SAME ARE TRUE AND CORRECT TO THE BEST OF MY KNOWLEDGE AND BELIEF.

REGISTERED LAND SURVEYOR
REGISTRATION NO. 28285
STATE OF COLORADO

REV: 11-23-15 M.F.D.
REV: 04-29-15 J.M.C.

UINTAH ENGINEERING & LAND SURVEYING
85 SOUTH 200 EAST - VERNAL, UTAH 84078
(435) 789-1017

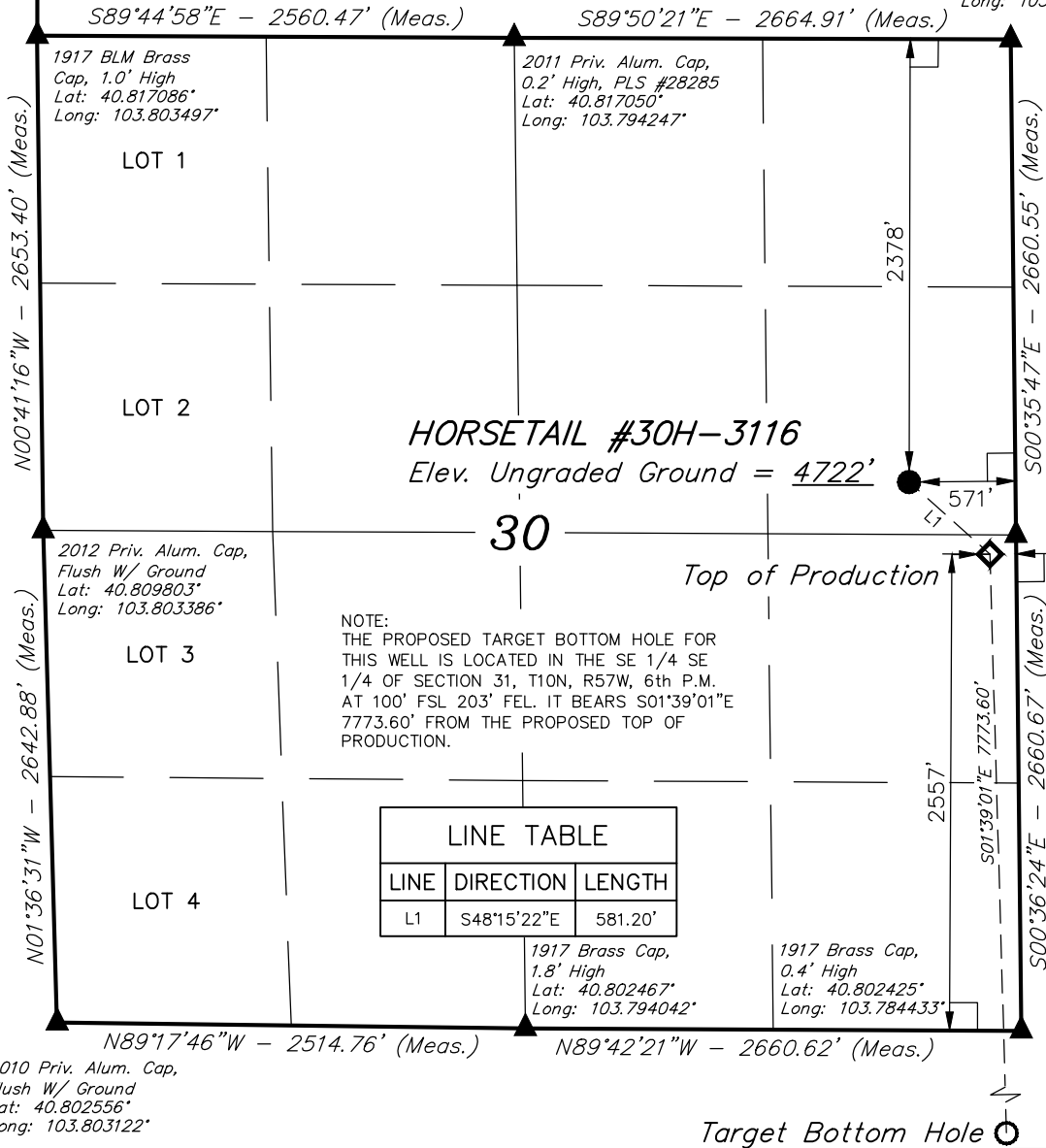
2010 Priv. Alum. Cap,
Flush W/ Ground
Lat: 40.802556°
Long: 103.803122°

LEGEND:

- 90° SYMBOL
- PROPOSED WELLHEAD.
- TOP OF PRODUCTION.
- SECTION CORNERS LOCATED.

NAD 83 (TOP OF PRODUCTION)		NAD 83 (SURFACE LOCATION)	
LATITUDE	= 40°48'34.00" (40.809444)	LATITUDE	= 40°48'37.82" (40.810506)
LONGITUDE	= 103°47'06.12" (103.785033)	LONGITUDE	= 103°47'11.76" (103.786600)
NAD 27 (TOP OF PRODUCTION)		NAD 27 (SURFACE LOCATION)	
LATITUDE	= 40°48'34.05" (40.809458)	LATITUDE	= 40°48'37.88" (40.810522)
LONGITUDE	= 103°47'04.32" (103.784533)	LONGITUDE	= 103°47'09.95" (103.786097)

PDOP = 1.3



NOTE:
THE PROPOSED TARGET BOTTOM HOLE FOR
THIS WELL IS LOCATED IN THE SE 1/4 SE
1/4 OF SECTION 31, T10N, R57W, 6th P.M.
AT 100' FSL 203' FEL. IT BEARS S01°39'01"E
7773.60' FROM THE PROPOSED TOP OF
PRODUCTION.

LINE TABLE		
LINE	DIRECTION	LENGTH
L1	S48°15'22"E	581.20'

Target Bottom Hole

T10N, R57W, 6th P.M.

WHITING OIL & GAS CORP.

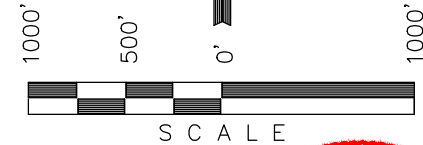
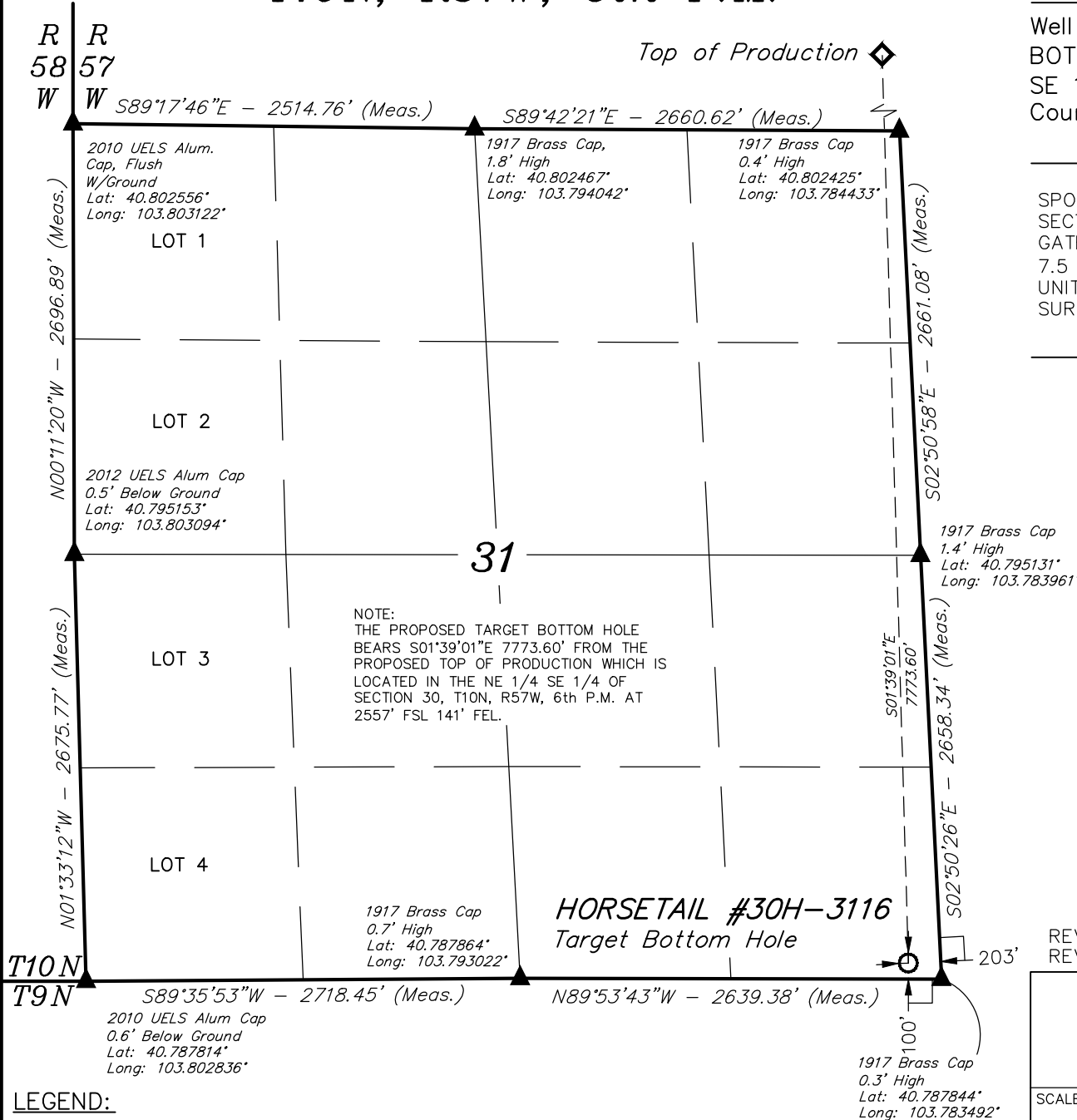
Well location, HORSETAIL #30H-3116 (TARGET BOTTOM HOLE), located as shown in the SE 1/4 SE 1/4 of Section 31, T10N, R57W, 6th P.M., Weld County, Colorado.

BASIS OF ELEVATION

SPOT ELEVATION LOCATED AT THE NORTHEAST CORNER OF SECTION 15, T9N, R58W, 6th P.M. TAKEN FROM THE GATEHOOK SPRING, QUADRANGLE, COLORADO, WELD COUNTY, 7.5 MINUTE QUAD (TOPOGRAPHIC MAP) PUBLISHED BY THE UNITED STATES DEPARTMENT OF THE INTERIOR, GEOLOGICAL SURVEY. SAID ELEVATION IS MARKED AS BEING 4679 FEET.

BASIS OF BEARINGS

BASIS OF BEARINGS IS A G.P.S. OBSERVATION.



CERTIFICATE

THIS IS TO CERTIFY THAT THE ABOVE PLAT WAS PREPARED FROM FIELD NOTES OF ACTUAL SURVEYS MADE BY ME OR UNDER MY SUPERVISION AND THAT THE SAME ARE TRUE AND CORRECT TO THE BEST OF MY KNOWLEDGE AND BELIEF.

REGISTERED LAND SURVEYOR
REGISTRATION NO. 28285
STATE OF COLORADO

REV: 11-23-15 M.F.D.
REV: 04-29-15 J.M.C.

LEGEND:

- └─┘ = 90° SYMBOL
- = TARGET BOTTOM HOLE.
- ◆ = TOP OF PRODUCTION.
- ▲ = SECTION CORNERS LOCATED.

NAD 83 (TARGET BOTTOM HOLE)	
LATITUDE	= 40°47'17.24" (40.788122)
LONGITUDE	= 103°47'03.28" (103.784244)
NAD 27 (TARGET BOTTOM HOLE)	
LATITUDE	= 40°47'17.29" (40.788136)
LONGITUDE	= 103°47'01.47" (103.783742)

UINTAH ENGINEERING & LAND SURVEYING 85 SOUTH 200 EAST - VERNAL, UTAH 84078 (435) 789-1017		
SCALE 1" = 1000'	DATE SURVEYED: 04-24-15	DATE DRAWN: 01-27-14
PARTY JARED CHRISTOPHER H.K.W.	REFERENCES G.L.O. PLAT	
WEATHER WARM	FILE	WHITING OIL & GAS CORP.