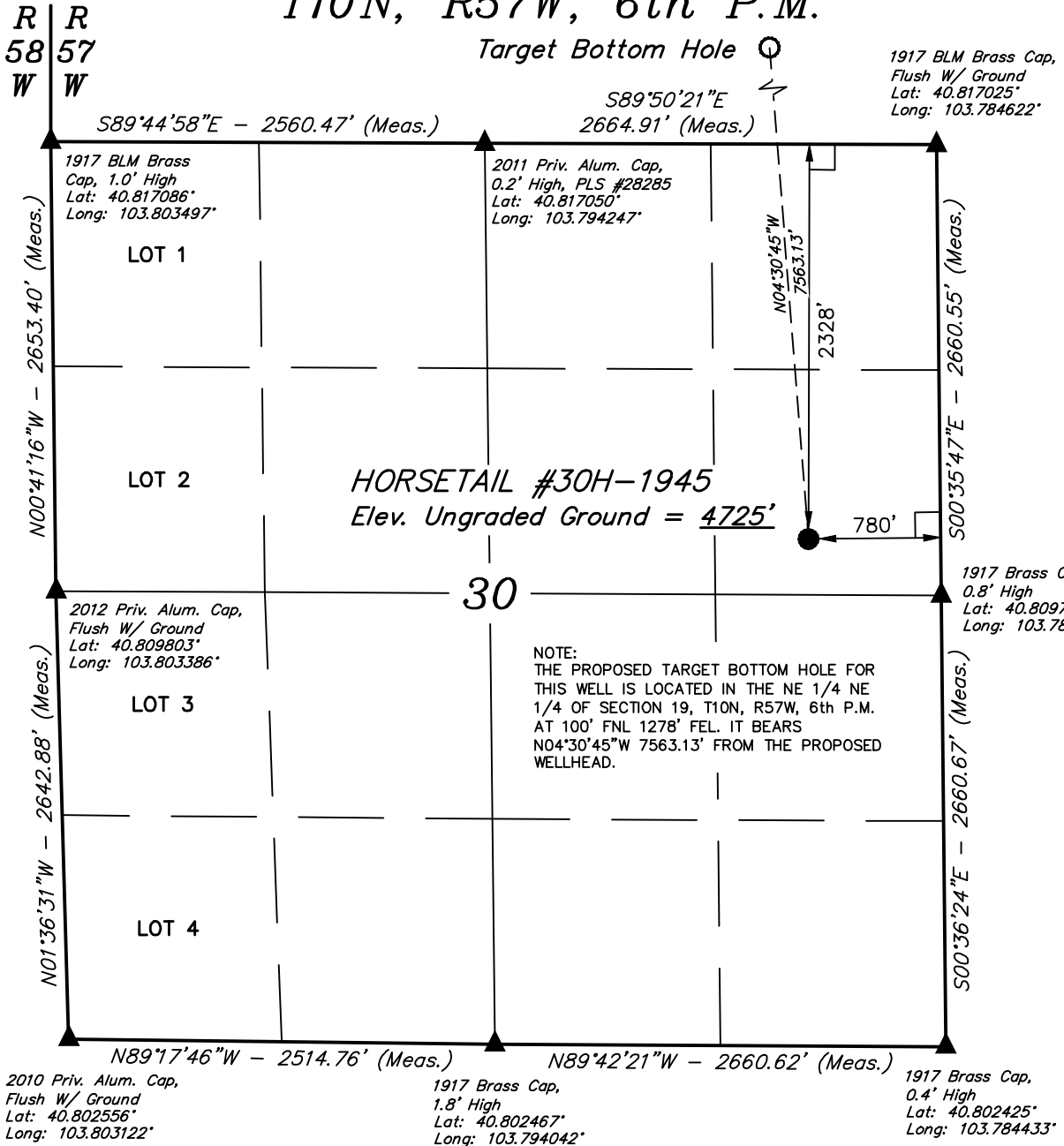


T10N, R57W, 6th P.M.

Target Bottom Hole

WHITING OIL & GAS CORP.

Well location, HORSETAIL #30H-1945 (SURFACE LOCATION), located as shown in the SE 1/4 NE 1/4 of Section 30, T10N, R57W, 6th P.M., Weld County, Colorado.



BASIS OF ELEVATION

SPOT ELEVATION LOCATED AT THE NORTHEAST CORNER OF SECTION 15, T9N, R58W, 6th P.M. TAKEN FROM THE GATEHOOK SPRING, QUADRANGLE, COLORADO, WELD COUNTY, 7.5 MINUTE QUAD (TOPOGRAPHIC MAP) PUBLISHED BY THE UNITED STATES DEPARTMENT OF THE INTERIOR, GEOLOGICAL SURVEY. SAID ELEVATION IS MARKED AS BEING 4679 FEET.

BASIS OF BEARINGS

BASIS OF BEARINGS IS A G.P.S. OBSERVATION.



NOTE:
THE PROPOSED TARGET BOTTOM HOLE FOR THIS WELL IS LOCATED IN THE NE 1/4 NE 1/4 OF SECTION 19, T10N, R57W, 6th P.M. AT 100' FNL 1278' FEL. IT BEARS N04°30'45"W 7563.13' FROM THE PROPOSED WELLHEAD.

CERTIFICATE
THIS IS TO CERTIFY THAT THE ABOVE PLAT WAS PREPARED FROM FIELD NOTES OF ACTUAL SURVEYS MADE BY ME OR UNDER MY SUPERVISION AND THAT THE SAME ARE TRUE AND CORRECT TO THE BEST OF MY KNOWLEDGE AND BELIEF.



REV: 04-29-15 J.M.C.

UINTAH ENGINEERING & LAND SURVEYING
85 SOUTH 200 EAST - VERNAL, UTAH 84078
(435) 789-1017

- LEGEND:**
- └─┘ = 90° SYMBOL
 - = PROPOSED WELLHEAD.
 - ▲ = SECTION CORNERS LOCATED.

PDOP = 1.3	
NAD 83 (SURFACE LOCATION)	
LATITUDE = 40°48'38.32" (40.810644)	
LONGITUDE = 103°47'14.49" (103.787358)	
NAD 27 (SURFACE LOCATION)	
LATITUDE = 40°48'38.37" (40.810658)	
LONGITUDE = 103°47'12.68" (103.786856)	

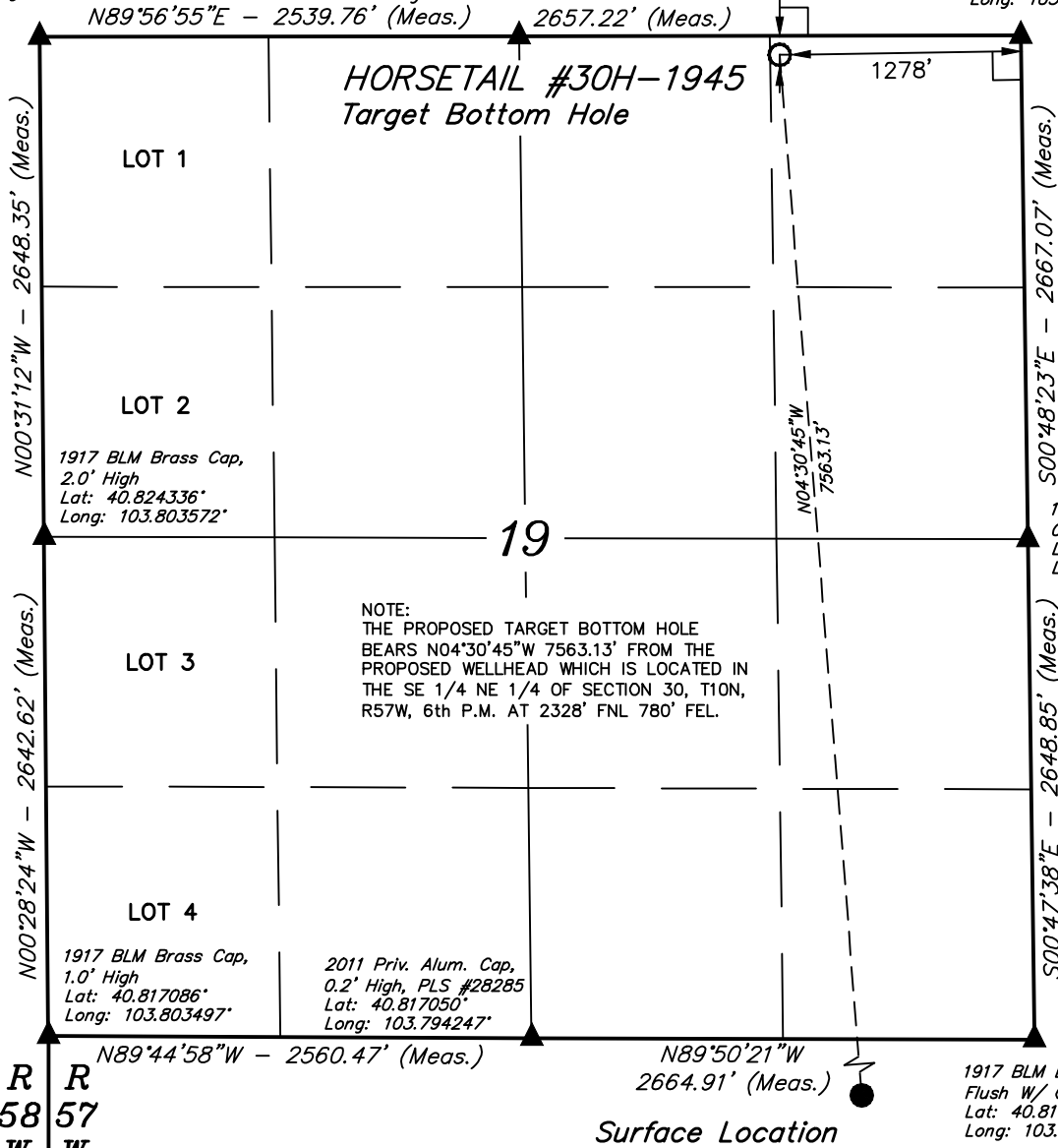
SCALE 1" = 1000'	DATE SURVEYED: 01-15-14	DATE DRAWN: 01-27-14
PARTY DALLAS NIELSEN D.S. H.K.W.	REFERENCES G.L.O. PLAT	
WEATHER COLD	FILE WHITING OIL & GAS CORP.	

T10N, R57W, 6th P.M.

2011 UELS Alum. Cap, RLS #17492
 Lat: 40.831603°
 Long: 103.803653°

2011 UELS Alum. Cap, Flush W/ Ground, RLS #17492
 Lat: 40.831606°
 Long: 103.794478° N89°55'14"E

1917 BLM Brass Cap, 0.5' High
 Lat: 40.831611°
 Long: 103.784878°



WHITING OIL & GAS CORP.

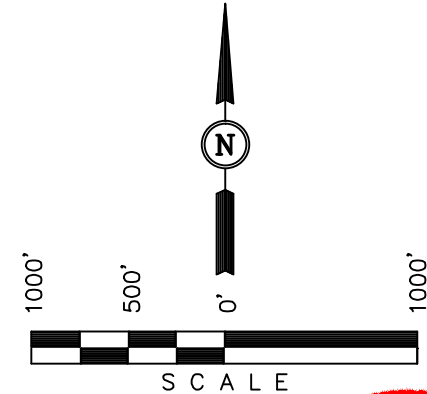
Well location, HORSETAIL #30H-1945 (TARGET BOTTOM HOLE), located as shown in the NE 1/4 NE 1/4 of Section 19, T10N, R57W, 6th P.M., Weld County, Colorado.

BASIS OF ELEVATION

SPOT ELEVATION LOCATED AT THE NORTHEAST CORNER OF SECTION 15, T9N, R58W, 6th P.M. TAKEN FROM THE GATEHOOK SPRING, QUADRANGLE, COLORADO, WELD COUNTY, 7.5 MINUTE QUAD (TOPOGRAPHIC MAP) PUBLISHED BY THE UNITED STATES DEPARTMENT OF THE INTERIOR, GEOLOGICAL SURVEY. SAID ELEVATION IS MARKED AS BEING 4679 FEET.

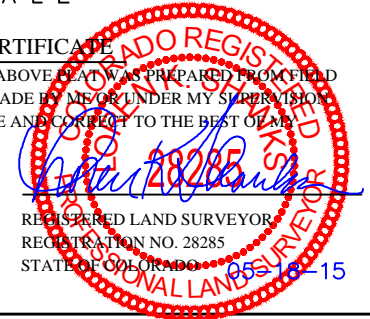
BASIS OF BEARINGS

BASIS OF BEARINGS IS A G.P.S. OBSERVATION.



CERTIFICATE

THIS IS TO CERTIFY THAT THE ABOVE PLAT WAS PREPARED FROM FIELD NOTES OF ACTUAL SURVEYS MADE BY ME OR UNDER MY SUPERVISION AND THAT THE SAME ARE TRUE AND CORRECT TO THE BEST OF MY KNOWLEDGE AND BELIEF.



REGISTERED LAND SURVEYOR
 REGISTRATION NO. 28285
 STATE OF COLORADO 05-16-15

REV: 04-29-15 J.M.C.

UINTAH ENGINEERING & LAND SURVEYING		
85 SOUTH 200 EAST - VERNAL, UTAH 84078		
(435) 789-1017		
SCALE 1" = 1000'	DATE SURVEYED: 01-15-14	DATE DRAWN: 01-27-14
PARTY DALLAS NIELSEN D.S. H.K.W.	REFERENCES G.L.O. PLAT	
WEATHER COLD	FILE WHITING OIL & GAS CORP.	

LEGEND:

- └─┘ = 90° SYMBOL
- = PROPOSED WELLHEAD.
- ▲ = SECTION CORNERS LOCATED.

NAD 83 (TARGET BOTTOM HOLE)
LATITUDE = 40°49'52.81" (40.831336)
LONGITUDE = 103°47'22.17" (103.789492)
NAD 27 (TARGET BOTTOM HOLE)
LATITUDE = 40°49'52.86" (40.831350)
LONGITUDE = 103°47'20.36" (103.788989)