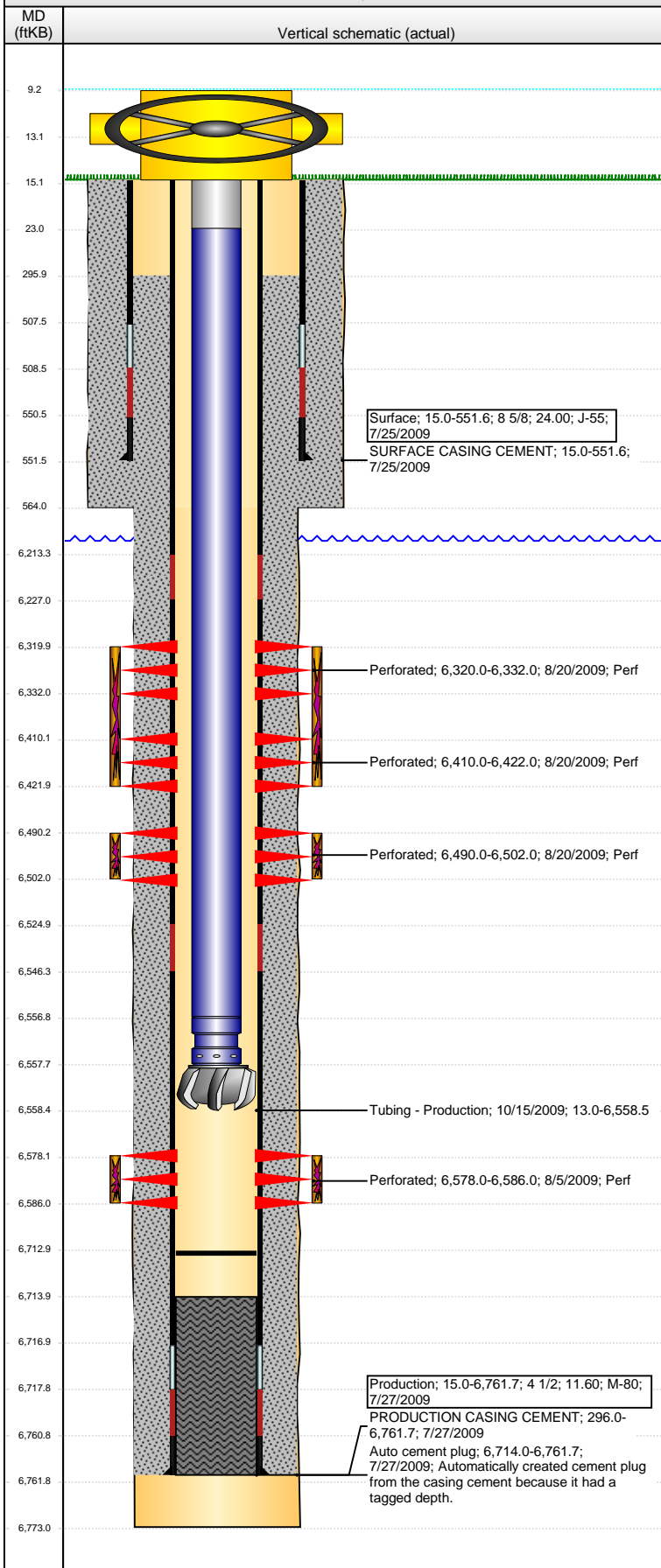


Well Name: WELLS RANCH AF06-07

VERTICAL - ORIGINAL HOLE, 1/20/2016 9:41:58 AM



Well Header

API	Business Unit	District	Well Config
05-123-30170	DJ BASIN	15	VERTICAL
Original KB Elevation (ft)	KB - GL / MSL (ftKB)	Spud Date	P & A Date
4,685.00	15.00	7/25/2009	

Comment

WAS FRAC'D INTO BY AF06-10 5/2010

Directions To Well

WCR 67 & 68, GO EAST 2/10THS, THEN SOUTH 1.75 MILES, THEN EAST 2.7 MILES, SOUTH 1.5 MILES, EAST 0.3 MILES, THEN SOUTH 0.1 MILES INTO LOCATION

Congressional Location

Quarter 1	Quarter 2	Quarter 3	Quarter 4	Section	Township	Twnshp N...	Range	Rng E/W Dir
		SW	NE	6	5	N	62	W

Bottom Hole Location

North-South Distance (ft)	From N or S Line	East-West Distance (ft)	From E or W Line

Plug Back Total Depths

Date	Depth (ftKB)	Method	Com
7/27/2009	6,714.0	CASING TALLY	TOP OF FLOAT COLLAR
8/4/2009	6,703.0	CASED HOLE LOG	CBL DEPTH LOGGER
10/18/2009	6,713.0	TAG	TAG/CO

Wellbore Sections

Section Des	Size (in)	Act Top, MD (ftKB)	Act Btm, MD (ftKB)
SURFACE	12 1/4	15.0	564.0
PRODUCTION	7 7/8	564.0	6,773.0

Zone Statuses

Zone Name	Status Date	Status	Fluid Type	Job	Prod Method
CODELL	8/31/2009	PR		DRILLING/CO...	
NIORARA	8/31/2009	PR		DRILLING/CO...	

Casing Strings

Surface, 551.6ftKB

Casing Description	Run Date	OD (in)	Wt/Len (l...)	Grade	Top, MD (ft...)	MD (ftKB)
Surface	7/25/2009	8 5/8	24.00	J-55	15.0	551.6

Production, 6,761.7ftKB

Casing Description	Run Date	OD (in)	Wt/Len (l...)	Grade	Top, MD (ft...)	MD (ftKB)
Production	7/27/2009	4 1/2	11.60	M-80	15.0	6,761.7

Cement

Description	Top Depth (ftKB)	Bottom Depth (ftKB)
SURFACE CASING CEMENT	15.0	551.6

Description	Top Depth (ftKB)	Bottom Depth (ftKB)
PRODUCTION CASING CEMENT	296.0	6,761.7

Tubing Strings

Tubing Description	Run Date	String...	ID (in)	Wt (lb/ft)	Grade	Len (ft)	Set De...
Tubing - Production	10/15/2009	2 3/8	1.995	4.70	J-55	6,545.51	

Tubing Components

Item Des	OD (in)	Wt (lb/ft)	Grade	Jts	Len (ft)	Btm (ftKB)	Btm (TVD) (ftKB)
Tubing Pup Joint	2 3/8	4.70	J-55	1	10.00	23.0	
Tubing	2 3/8	4.70	J-55	212	6,533.66	6,556.7	
Pump Seating Nipple	2 3/8			1	1.10	6,557.8	
Cutrite Blade Bit	3 7/8			1	0.75	6,558.5	

Perforation Data

Zone	Bnch/St g	Entered Shot Total	Top (ftKB)	Btm (ftKB)	Date
NIORARA, ORIGINAL HOLE	A	24	6,320.00	6,332.00	8/20/2009
NIORARA, ORIGINAL HOLE	B	24	6,410.00	6,422.00	8/20/2009
NIORARA, ORIGINAL HOLE	C	24	6,490.00	6,502.00	8/20/2009
CODELL, ORIGINAL HOLE		32	6,578.00	6,586.00	8/5/2009

Well Name: WELLS RANCH AF06-07

VERTICAL - ORIGINAL HOLE, 1/20/2016 9:42:01 AM

Stimulations & Treatments

Date	Zone	Primary Job Type
8/20/2009	CODELL, ORIGINAL HOLE	DRILLING/COMPLETION - ORIGINAL

Technical Result	Tech Result Details	Tech Result Note
Success	According to Plan	

Comment
(CODELL): REVERSE STEP RATE RESULTS. PO 13 NWB 180 PSI WB 221 PSI PPF 204 PSI FOR A TOTAL OF 605 PSI OF FRICTION. PRE JOB 5 MINUTE OF 2494 PSI. RAISED TREATMENT RATE TO 22 BPM.TREATMENT WENT WELL. AVG VISC 28.4 CPS AVG TEMP 70.6F AVG PH 10.15. POST JOB 5 MINUTE OF 2936 PSI.

Date	Zone	Primary Job Type
8/20/2009	NIOBRARA, ORIGINAL HOLE	DRILLING/COMPLETION - ORIGINAL

Technical Result	Tech Result Details	Tech Result Note
Success	According to Plan	

Comment
(NIOBRARA"C"): RAISED RATE TO 60 BPM DUE TO LOW PRESSURES. TREATMENT WENT WELL. AVG VISC 24.8 CPS AVG TEMP 71.3F AVG PH 10.28. POST JOB 5 MINUTE OF 2824 PSI.

Date	Zone	Primary Job Type
8/20/2009	NIOBRARA, ORIGINAL HOLE	DRILLING/COMPLETION - ORIGINAL

Technical Result	Tech Result Details	Tech Result Note
Success	According to Plan	

Comment
(NIOBRARA "A" & "B"): TREATMENT WENT WELL. AVG VISC 24.2 CPS AVG TEMP 71.9F AVG PH 10.2. POST JOB 5 MINUTE OF 2863 PSI.

Other In Hole

Run Date	Des	OD (in)	Top (ftKB)	Btm (ftKB)

Logs

Date	Type	Top, MD (ftKB)	Btm, MD (ftKB)
7/27/2009	SPECTRAL DENSITY/Pe/DSN NEUTRON/SP/ARRAY COMPENSATED TRUE RESISTIVITY/6 ARM CALIPER	559.0	6,750.0
7/27/2009	SPECTRAL GAMMA RAY	3,400.0	6,750.0
8/4/2009	CBL/CCL/GR	12.0	6,702.0
10/8/2014	GYRO	12.0	6,450.0

