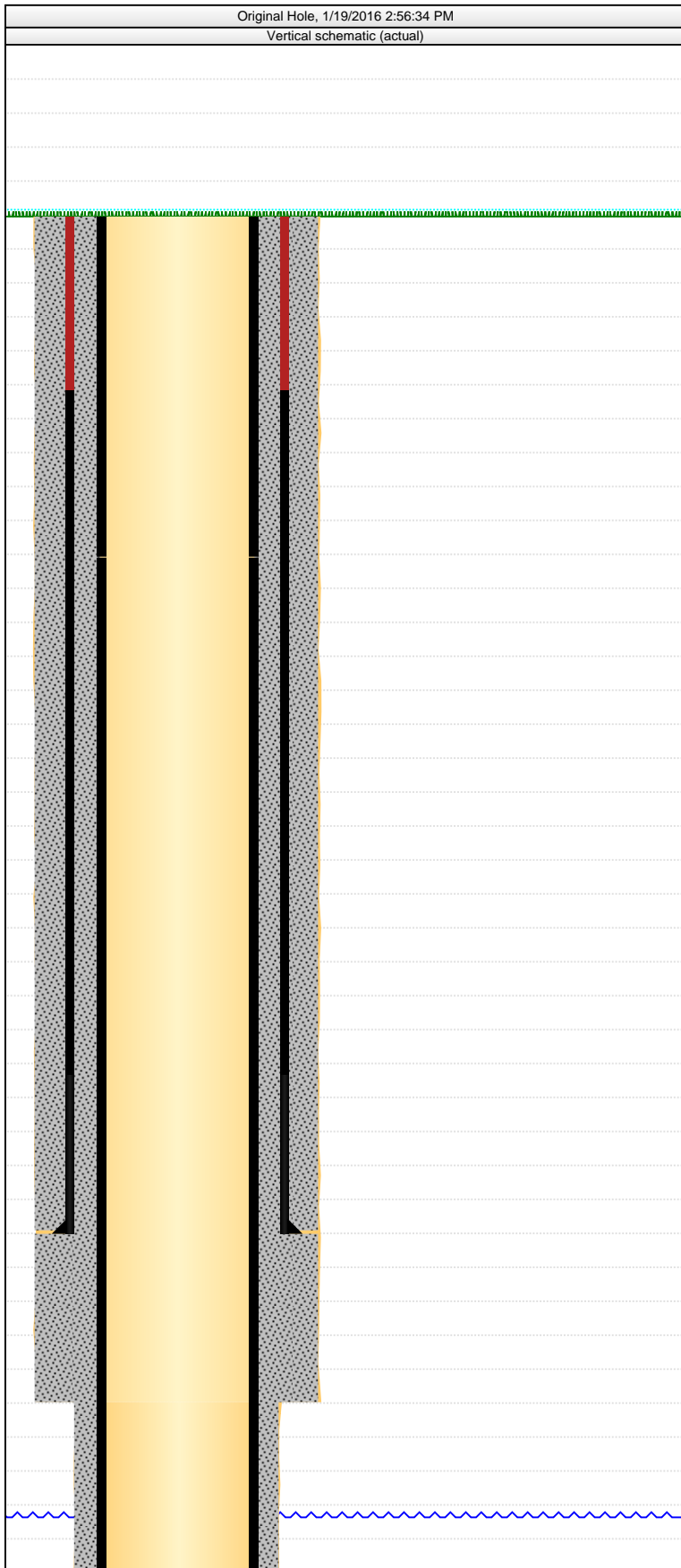


# Complete Well Summary

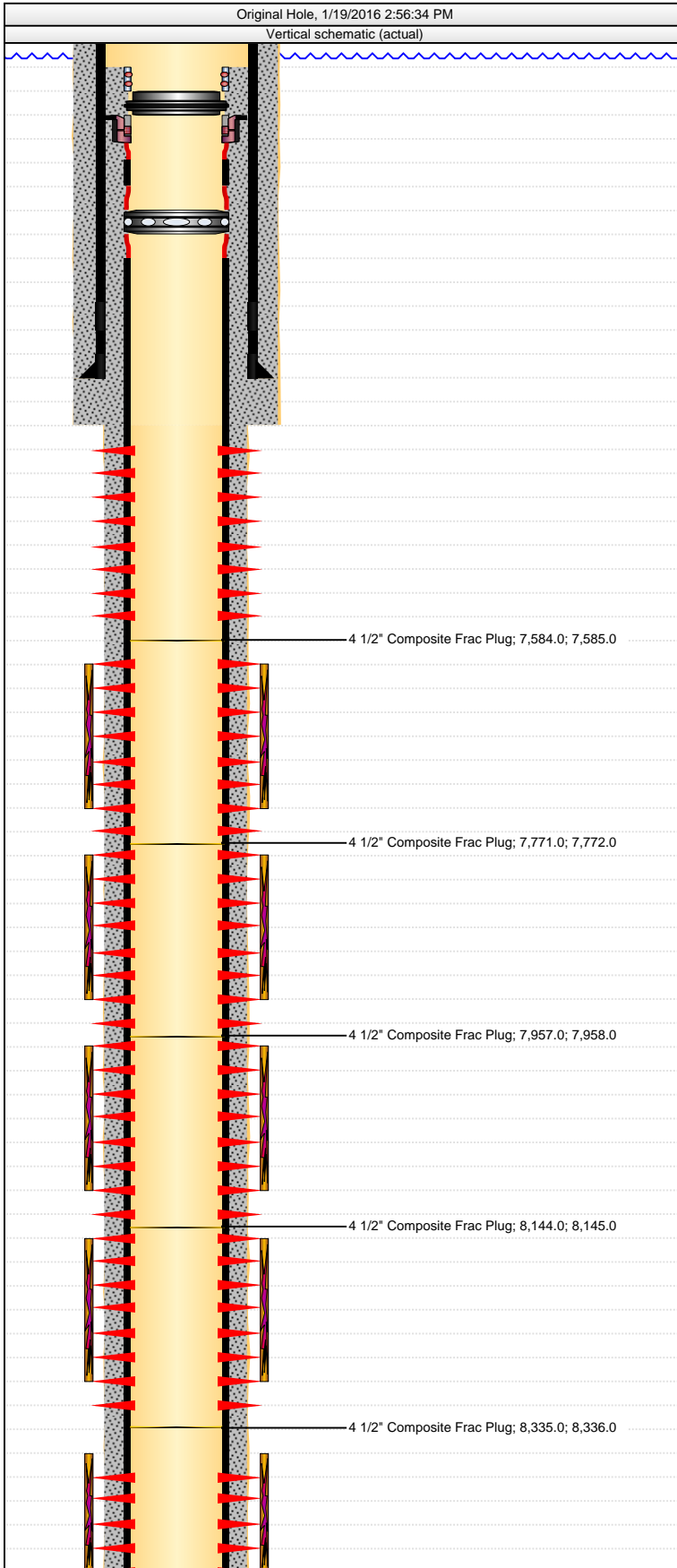
Sherley C-4-9HN



API/UWI 05-123-40898		Operator Bayswater Exploration & Production LLC					
Original KB Elevation (ft) 4,663.00	KB-Ground Distance (ft) 22.00	Spud Date 3/8/2015	Rig Release Date 4/24/2015				
Surface Legal Location		Latitude (°) 40° 26' 5.172" N	Longitude (°) 104° 40' 28.308" W				
Original Hole							
Wellbore API/UWI	Bottom Hole Legal Location SWSW Sec 9, T5N, R65W	Profile Type Horizontal	VS Dir (°) 181.86				
Proposed Deviation Survey <des>, Proposed? No		Actual Deviation Survey <des>, Proposed? No					
Size (in)	Act Top (ftKB)		Act Btm (ftKB)				
12 1/4	22.0		841.0				
8 3/4	841.0		7,405.0				
6 1/8	7,405.0		16,945.0				
Plug Back Total Depths							
Date	Depth (ftKB)	Method	Com				
Formations							
Formation Name	Geologic Age	Element Type	H2S Conc (%)	Final Top MD (ftKB)	Final Top (TVD) (ftKB)		
Sharon Springs				6,725.0	6,664.3		
Nio A Chalk							
Nio A Marl							
Nio B Chalk							
Nio B Marl							
Nio C Chalk							
Nio C Marl							
Deviation Surveys							
Date	Des		Proposed?	Definitive?			
			No	No			
Reservoirs							
Res Name		Top (ftKB)	Btm (ftKB)	Res Datum Depth (ft)			
Surface, 831.1ftKB							
Run Date 3/9/2015	Centralizers 8		Scratchers		Drift Mi...		
OD (in)	Item Des	Btm (ftKB)	Jts	ID (in)	Wt (kips)	Grade	Top Thread
9 5/8	Wellhead	24.3	1	8.92	0.1	J-55	Ltc
9 5/8	Pup jt.	28.7	1	8.92	0.2	J-55	Ltc
9 5/8	Casing Joints	787.0	18	8.92	27.3	J-55	Ltc
9 5/8	Float Baffle	787.1	1	8.92	0.0	J-55	Ltc
9 5/8	Casing Joints	829.2	1	8.92	1.5	J-55	Ltc
9 5/8	Float Shoe	831.1	1	8.92	0.1	J-55	Ltc
Intermediate, 7,395.7ftKB							
Run Date 4/14/2015	Centralizers 57		Scratchers		Drift Mi...		
OD (in)	Item Des	Btm (ftKB)	Jts	ID (in)	Wt (kips)	Grade	Top Thread
7	Casing Hanger	22.0	1	6.18	0.0	P-110	Buttress Thread
7	Casing Pup Joint	26.0	1	6.18	0.1	P-110	Buttress Thread
7	Casing Joints	7,351.6	167	6.18	212.4	P-110	Buttress Thread
7	Float Shoe	7,353.0	1	6.18	0.0	P-110	Buttress Thread
7	Shoe joint	7,393.5	1	6.18	1.2	P-110	Buttress Thread
7	Float Shoe	7,395.7	1	6.18	0.1	P-110	Buttress Thread
Liner, 16,941.0ftKB							
Run Date 4/23/2015	Centralizers		Scratchers		Drift Mi...		
OD (in)	Item Des	Btm (ftKB)	Jts	ID (in)	Wt (kips)	Grade	Top Thread
4	Plug container	6,522.9	0	3.34	0.0	S135	XT-39
4	X-O	6,522.9	0	3.34	0.0	S135	XT-39
4	Drill Pipe Pup jt	6,522.9	0	3.34	0.0	S135	P-Tech
4	Drill Pipe	6,522.9	0	3.34	0.0	S135	P-Tech
4	HWDP (4.0 in)	6,522.9	0	2.56	0.0	Premium	P-Tech
4	X-O	6,522.9	0	2.56	0.0	Premium	P-Tech
4	Pup	6,522.9	0	2.56	0.0	S135	XT-39
4	Bumper jars	6,522.9	0	2.56	0.0	S135	XT-39
4	Liner setting tool	6,522.9	0	2.56	0.0	S135	XT-39
4 1/2	PBR / Tie back sleeve	6,539.3	1	3.92	0.2	P-110	XT-39
4 1/2	Packer	6,542.7	1	3.92	0.0	P-110	Vallourec VAM
4 1/2	Liner Hanger	6,548.4	1	3.92	0.1	P-110	Vallourec VAM
4 1/2	X-over 5" VAM Top HT X 4 1/2" BTC	6,549.1	1	3.92	0.0	P-110	Vallourec VAM
4 1/2	Casing Joints	6,593.9	1	3.92	0.6	P-110	Buttress Thread

# Complete Well Summary

Sherley C-4-9HN



OD (in)	Item Des	Btm (ftKB)	Jts	ID (in)	Wt (kips)	Grade	Top Thread
4 1/2	Handling sub I-mag burst disk	6,599.0	1	3.92	0.1	P-110	Buttress Thread
4 1/2	I-mag 6500 psi burst disk	6,601.8	1	3.92	0.0	P-110	Buttress Thread
4 1/2	Handling sub I-mag burst disk	6,606.9	1	3.92	0.1	P-110	Buttress Thread
4 1/2	Casing Joints	16,823.9	229	3.92	137.9	P-110	Buttress Thread
5	Handling sub TD Toe Sleeve	16,829.0	1		0.0		Buttress Thread
5	TD Toe Sleeve w/ 11,500 psi burst disk	16,836.0	1		0.0		Buttress Thread
5	Handling sub TD Toe Sleeve	16,840.8	1		0.0		Buttress Thread
4 1/2	Casing Joints	16,885.7	1	3.92	0.6	P-110	Buttress Thread
5	Plug landing collar w/ shear out ball seat	16,887.3	1		0.0		Buttress Thread
5	Handling sub with debris catcher	16,892.4	1		0.0		Buttress Thread
5	Single valve 10 KFloat Collar	16,893.4	1		0.0		Buttress Thread
5	Single valve 10K Float Collar	16,894.5	1		0.0		Buttress Thread
4 1/2	Casing Joints	16,939.4	1	3.92	0.6	P-110	Buttress Thread
5	Single valve 10K Float Shoe	16,941.0	1		0.0		Buttress Thread

## Surface Casing Cement, Casing, 3/9/2015 07:00

Cementing Company Baker Hughes			Evaluation Method Returns to Surface		Cement Evaluation Results Received 10 bbls back to surface.		
Stg #	Description				Top (ftKB)	Btm (ftKB)	Full Return?
1	Surface Casing Cement				22.0	831.0	Yes
	Fluid	Class	Amount (sacks)	Yield (ft³/sack)	Mix H2O Ratio (gal/sack)	Vol Pumped (bbl)	Fluid Des
Lead	TYPE III	275	1.40	6.80	68.4	Lead Type III 275sx 68.4 bbls	

## Intermediate Casing Cement, Casing, 4/14/2015 20:00

Cementing Company Baker Hughes			Evaluation Method Returns to Surface		Cement Evaluation Results Received 20 bbls back to surface		
Stg # 1	Description Intermediate Casing Cement				Top (ftKB) 22.0	Btm (ftKB) 7,395.7	Full Return? Yes
Fluid	Class	Amount (sacks)	Yield (ft³/sack)	Mix H2O Ratio (gal/sack)	Vol Pumped (bbl)	Fluid Des	
Lead	Premium Lite	450	2.42	13.59	192.5		
Tail	G	230	1.22	5.37	49.9		

## Production Casing, Casing, 4/24/2015 08:00

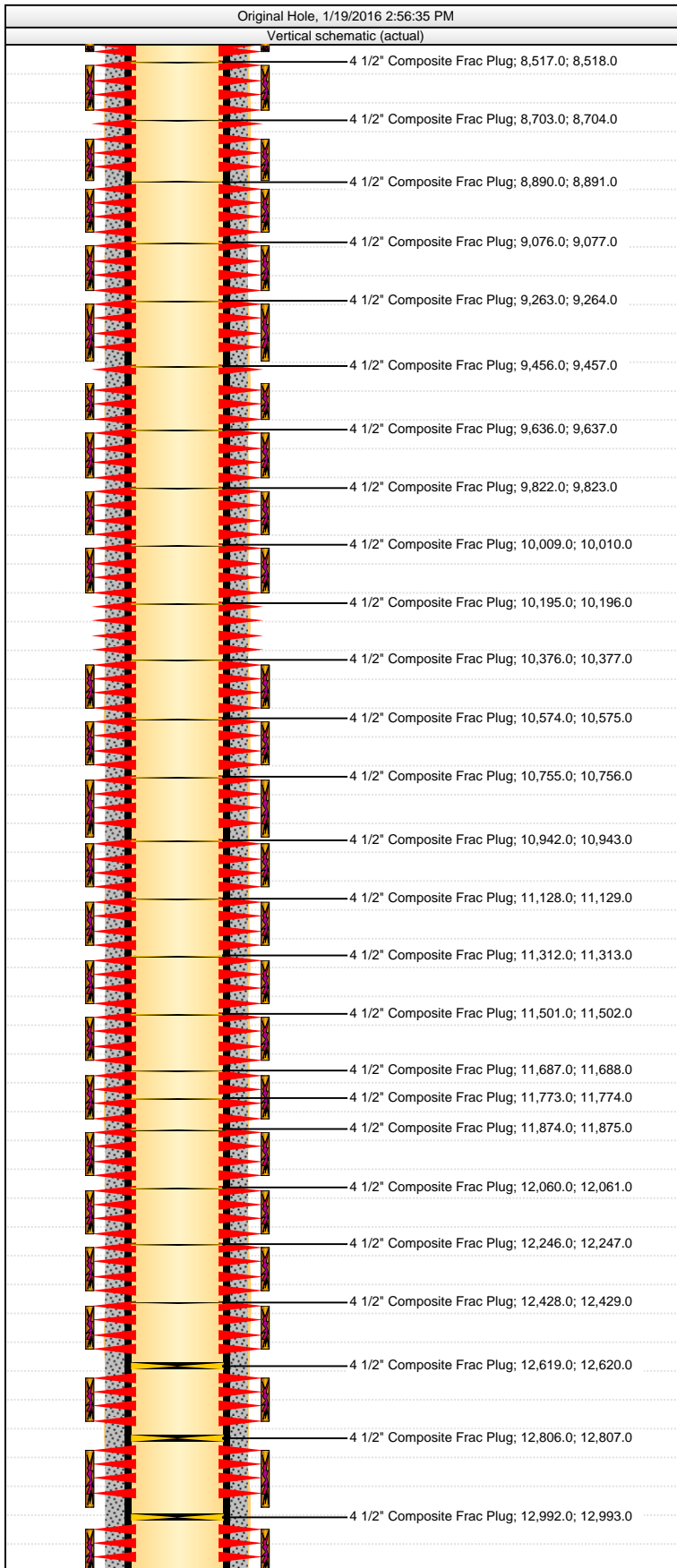
Cementing Company Baker Hughes			Evaluation Method Returns to Surface		Cement Evaluation Results Received 25 bbls to surface		
Stg #	Description				Top (ftKB)	Btm (ftKB)	Full Return?
1	Production Casing				6,523.0	16,941.0	No
Fluid	Class	Amount (sacks)	Yield (ft³/sack)	Mix H2O Ratio (gal/sack)	Vol Pumped (bbl)	Fluid Des	
Tail	50/50 POZ	800	1.44			50/50 Pozmix + adds	

## Other In Hole

OD (in)	Des	Top (ftKB)	Btm (ftKB)	ID (in)	Make	Model
4	4 1/2" Composite Frac Plug	16,349.0	16,350.0	0.00		
4	4 1/2" Composite Frac Plug	16,163.0	16,164.0	0.00		
4	4 1/2" Composite Frac Plug	15,972.0	15,973.0	0.00		
4	4 1/2" Composite Frac Plug	15,790.0	15,791.0	0.00		
4	4 1/2" Composite Frac Plug	15,603.0	15,604.0	0.00		
4	4 1/2" Composite Frac Plug	15,417.0	15,418.0	0.00		
4	4 1/2" Composite Frac Plug	15,230.0	15,231.0	0.00		
4	4 1/2" Composite Frac Plug	15,044.0	15,045.0	0.00		
4	4 1/2" Composite Frac Plug	14,860.0	14,861.0	0.00		
4	4 1/2" Composite Frac Plug	14,664.0	14,665.0	0.00		
4	4 1/2" Composite Frac Plug	14,484.0	14,485.0	0.00		
4	4 1/2" Composite Frac Plug	14,298.0	14,299.0	0.00		
4	4 1/2" Composite Frac Plug	14,111.0	14,112.0	0.00		
4	4 1/2" Composite Frac Plug	13,925.0	13,926.0	0.00		
4	4 1/2" Composite Frac Plug	13,744.0	13,745.0	0.00		
4	4 1/2" Composite Frac Plug	13,542.0	13,543.0	0.00		
4	4 1/2" Composite Frac Plug	13,365.0	13,366.0	0.00		
4	4 1/2" Composite Frac Plug	13,179.0	13,180.0	0.00		
4	4 1/2" Composite Frac Plug	12,992.0	12,993.0	0.00		
4	4 1/2" Composite Frac Plug	12,806.0	12,807.0	0.00		
4	4 1/2" Composite Frac Plug	12,619.0	12,620.0	0.00		
4	4 1/2" Composite Frac Plug	12,428.0	12,429.0	0.00		
4	4 1/2" Composite Frac Plug	12,246.0	12,247.0	0.00		
4	4 1/2" Composite Frac Plug	12,060.0	12,061.0	0.00		
4	4 1/2" Composite Frac Plug	11,874.0	11,875.0	0.00		

# Complete Well Summary

Sherley C-4-9HN



## Other In Hole

OD (in)	Des	Top (ftKB)	Btm (ftKB)	ID (in)	Make	Model
4	4 1/2" Composite Frac Plug	11,687.0	11,688.0	0.00		
4	4 1/2" Composite Frac Plug	11,773.0	11,774.0	0.00		
4	4 1/2" Composite Frac Plug	11,501.0	11,502.0	0.00		
4	4 1/2" Composite Frac Plug	11,312.0	11,313.0	0.00		
4	4 1/2" Composite Frac Plug	11,128.0	11,129.0	0.00		
4	4 1/2" Composite Frac Plug	10,942.0	10,943.0	0.00		
4	4 1/2" Composite Frac Plug	10,755.0	10,756.0	0.00		
4	4 1/2" Composite Frac Plug	10,574.0	10,575.0	0.00		
4	4 1/2" Composite Frac Plug	10,376.0	10,377.0	0.00		
4	4 1/2" Composite Frac Plug	10,195.0	10,196.0	0.00		
4	4 1/2" Composite Frac Plug	10,009.0	10,010.0	0.00		
4	4 1/2" Composite Frac Plug	9,822.0	9,823.0	0.00		
4	4 1/2" Composite Frac Plug	9,636.0	9,637.0	0.00		
4	4 1/2" Composite Frac Plug	9,456.0	9,457.0	0.00		
4	4 1/2" Composite Frac Plug	9,263.0	9,264.0	0.00		
4	4 1/2" Composite Frac Plug	9,076.0	9,077.0	0.00		
4	4 1/2" Composite Frac Plug	8,890.0	8,891.0	0.00		
4	4 1/2" Composite Frac Plug	8,703.0	8,704.0	0.00		
4	4 1/2" Composite Frac Plug	8,517.0	8,518.0	0.00		
4	4 1/2" Composite Frac Plug	8,335.0	8,336.0	0.00		
4	4 1/2" Composite Frac Plug	8,144.0	8,145.0	0.00		
4	4 1/2" Composite Frac Plug	7,957.0	7,958.0	0.00		
4	4 1/2" Composite Frac Plug	7,771.0	7,772.0	0.00		
4	4 1/2" Composite Frac Plug	7,584.0	7,585.0	0.00		

## Production Wellhead Assembly, Cameron on 3/9/2015 09:32

Start Date	Type	Make	WP (psi)	Size (in)	Overhaul Date
3/9/2015	Production Wellhead Assembly	Cameron	5,000.0	11.000	

## Vertical Components

Make	Model	Se cti on	Top Conn Type	Top Sz (in)	Btm Conn Type	Btm Sz (in)	Des	WP (psi)
Cameron	IC-2-L							

## General Notes

Date	Com
------	-----

## Drilling - original, 3/8/2015 07:00

Job Category	Primary Job Type	Start Date	End Date
Drilling - 810	Drilling - original	3/8/2015	4/24/2015

## Drilling - original, 3/8/2015 07:00

AFE Number	AFE+Supp Amt (Cost)	Total Fld Est (Cost)	Total Final Invoice (Cost)
	6,884,148.00	1,838,737.00	

## Summary

Poss Cost Save (Cost)	Poss Time Save (hr)	Est Prob Cost (Cost)	Est Lost Time (hr)
-----------------------	---------------------	----------------------	--------------------

## Phases

Phase Type 1	Planned Likely Phase Cost (Cost)	PI Cum Days ML (days)	Planned End Depth (ftKB)
Surface			

## Job Contacts

Contact Name	Company	Title	Office	Mobile
Mark Stoner	IPT	Co. Man	(307) 240-0166	(530) 721-0317
Siji Chaparro	IPT	Co. Man	(307) 240-0166	(720) 951-8838
Craig Hope	IPT	Night Co. Man	(307) 240-0166	(970) 397-5392
Dave Pauling	IPT	Night Co. Man	(307) 240-0166	(970) 301-3515
Andy McClure	Frontier	Rig Manager		(435) 671-3608
Chris Bruckner	Frontier Rig 10	Rig Manager		(435) 689-1800
Red Benge	IPT	Night Co. Man		(970) 203-4850

## BHA #1, Surface Assembly

BHA #	Size (in)	Model	IADC Codes		IADC Bit Dull
1	12 1/4	E1038			1-1-NO-A-X-0--TD
Depth In (ftKB)	Depth Out (ftKB)	Drilled (ft)	Drill Time (hr)	Bit Hrs Out...	IADC Bit Dull
22.0	841.0	819.00	5.50	5.50	1-1-NO-A-X-0--TD

## String Components

Reed E1038, Mud Motor - Bent Housing, XO Sub - Non Mag, Drill Collar - Pony Flex Non Mag, UBHO MWD - Directional, Drill Collar - Pony Flex Non Mag, Drill Collar - Flex Non Mag, Drill Collar - Flex Non Mag, HWDP

## BHA #2, Steerable

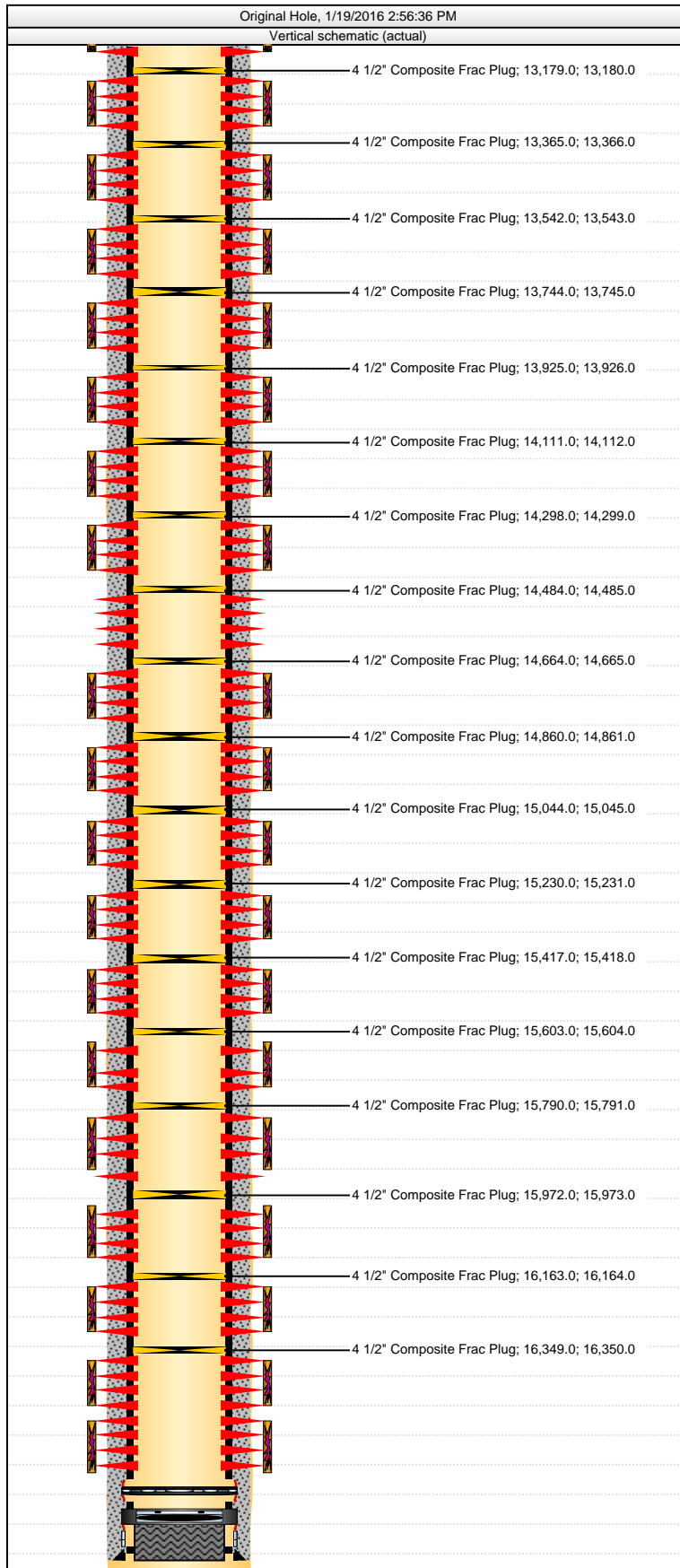
BHA #	Size (in)	Model	IADC Codes		IADC Bit Dull
2	8 3/4	SDi611			1-2-CT-G-X-0--TD
Depth In (ftKB)	Depth Out (ftKB)	Drilled (ft)	Drill Time (hr)	Bit Hrs Out...	IADC Bit Dull
841.0	7,405.0	6,564.00	42.00	42.00	1-2-CT-G-X-0--TD

## String Components

Smith SDi611, Mud Motor - Bent Housing, NMDC - Pony monel, MWD - Dir & Logging, NMDC - Pony monel, NMDC, NMDC, Drill Pipe, HWDP, Drill Pipe

# Complete Well Summary

Sherley C-4-9HN



<b>BHA #3, Sherley Lateral</b>					
BHA # 3	Size (in) 6 1/8	Model SKH1516M-C	IADC Codes ---	IADC Bit Dull 1-1-CT-G-X-0-NO-TD	
Depth In (ftKB) 7,405.0	Depth Out (ftKB) 16,945.0	Drilled (ft) 9,540.00	Drill Time (hr) 75.00	Bit Hrs Out... 75.00	IADC Bit Dull 1-1-CT-G-X-0-NO-TD
String Components Reed SKH1516M-C, Mud Motor - Bent Housing, Stabilizer - Non Mag, NMDC/Pony Monel, UBHO, NMDC/Pony Monel, NMDC/Flex Monel, Filter Sub, XO Sub, Drill Pipe, Reamer/ECC., Drill Pipe, Reamer/Ghost, Drill Pipe, XO Sub, Agitator/Shock sub, XO Sub, Drill Pipe, HWDP (4.0 in), Drill Pipe					
<b>Initial Completion, 4/25/2015 00:00</b>					
Job Category Completion - 820		Primary Job Type Initial Completion		Start Date 4/25/2015	End Date
<b>Initial Completion, 4/25/2015 00:00</b>					
AFE Number		AFE+Supp Amt (Cost) 2,879,293.66		Total Fld Est (Cost)	Total Final Invoice (Cost)
Summary					
Poss Cost Save (Cost)		Poss Time Save (hr)		Est Prob Cost (Cost)	Est Lost Time (hr)
<b>Phases</b>					
Phase Type 1				Planned Likely Phase Cost (Cost)	Pl Cum Days ML (days)
					Planned End Depth (ftKB)
<b>Job Contacts</b>					
Contact Name Caleb Brewer	Company Mega Operating		Title Wellsite Supervisor	Office	Mobile 970-260-3369
<b>BHA #&lt;stringno&gt;, &lt;des&gt;</b>					
BHA #	Size (in)	Model	IADC Codes	IADC Bit Dull	
Depth In (ftKB)	Depth Out (ftKB)	Drilled (ft)	Drill Time (hr)	Bit Hrs Out...	IADC Bit Dull
String Components					
<b>Logs</b>					
Date	Type	Top (ftKB)	Btm (ftKB)	Logging Company	
<b>Bottom Hole Cores</b>					
Core #	Type	Top (ftKB)	Btm (ftKB)	Recov (ft)	Wellbore
<b>Leak Off and Formation Integrity Tests</b>					
Test Date	Last Casing String Run		P Surf Applied (psi)	Depth (ftKB)	Dens Fluid (lb/gal)
					Leak off?
<b>Schematic Annotations</b>					
Depth (ftKB)			Annotation		
<b>Production Failures</b>					
Failure Date	Failure Des	Fail Type	Cause	Resolved Date	Est Fail (Cost)