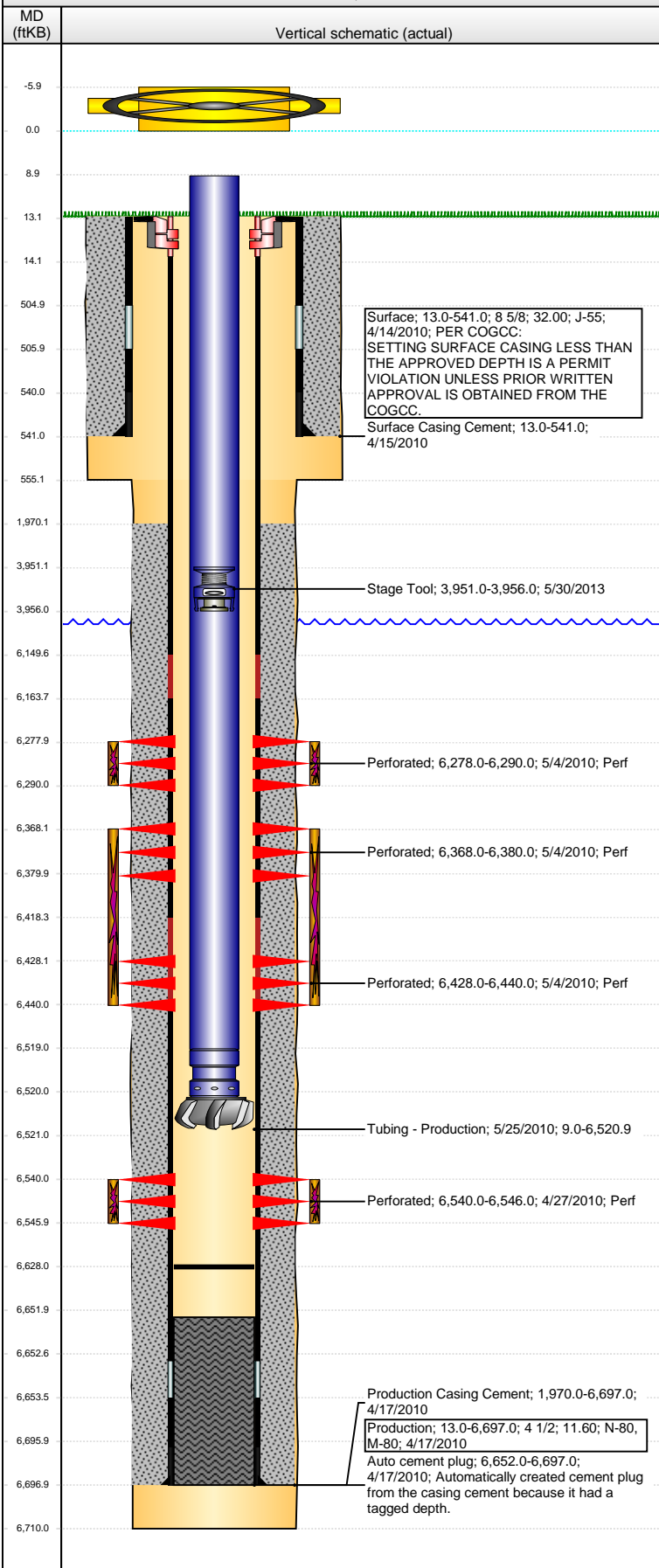


**Well Name: WELLS RANCH AF06-16**

VERTICAL - ORIGINAL HOLE, 1/19/2016 11:16:26 AM



Well Header			
API	Business Unit	District	Well Config
05-123-30337	DJ BASIN	15	VERTICAL
Original KB Elevation (ft)	KB - GL / MSL (ftKB)	Spud Date	P & A Date
4,666.00	13.00	4/14/2010	
Comment			

Directions To Well  
 WCR 67 & 68, EAST 0.2 MILES, SOUTH 2.75 MILES TO COW CAMP, EAST/SOUTHEAST 2.25 MILES THROUGH SEC 35 INTO THE NORTHEAST OF SEC 1, SOUTH 0.5 MILES, EAST 1 MILE, SOUTHEAST INTO LOCATION.

Congressional Location							
Quarter 1	Quarter 2	Quarter 3	Quarter 4	Section	Township	Twnshp N...	Range
		SE	SE	6	5	N	62
				Rng E/W Dir			
				W			

Bottom Hole Location			
North-South Distance (ft)	From N or S Line	East-West Distance (ft)	From E or W Line

Plug Back Total Depths			
Date	Depth (ftKB)	Method	Com
4/17/2010	6,652.0	CASING TALLY	FLOAT COLLAR
4/27/2010	6,641.0	CASED HOLE LOG	DEPTH-LOGGER/CBL
5/25/2010	6,628.0	TUBING TALLY	DRILL 2 COMPOSITE PLUGS AND CHASE DOWN...

Wellbore Sections			
Section Des	Size (in)	Act Top, MD (ftKB)	Act Btm, MD (ftKB)
SURFACE	12 1/4	13.0	555.0
PRODUCTION	7 7/8	555.0	6,710.0

Zone Statuses					
Zone Name	Status Date	Status	Fluid Type	Job	Prod Method
CODELL	5/6/2010	PR		DRILLING/CO...	
CODELL	1/7/2011	PR	Water		Flowing
CODELL	10/8/2015	PR			
NIOBRARA	5/6/2010	PR		DRILLING/CO...	
NIOBRARA	1/7/2011	PR	Water		Flowing

Casing Strings							
Surface, 541.0ftKB							
Casing Description	Run Date	OD (in)	Wt/Len (l...)	Grade	Top, MD (ft...)	MD (ftKB)	
Surface	4/14/2010	8 5/8	32.00	J-55	13.0	541.0	

Production, 6,697.0ftKB							
Casing Description	Run Date	OD (in)	Wt/Len (l...)	Grade	Top, MD (ft...)	MD (ftKB)	
Production	4/17/2010	4 1/2	11.60	M-80	13.0	6,697.0	

Cement			
Description	Top Depth (ftKB)	Bottom Depth (ftKB)	
Surface Casing Cement	13.0	541.0	
Description	Top Depth (ftKB)	Bottom Depth (ftKB)	
Production Casing Cement	1,970.0	6,697.0	

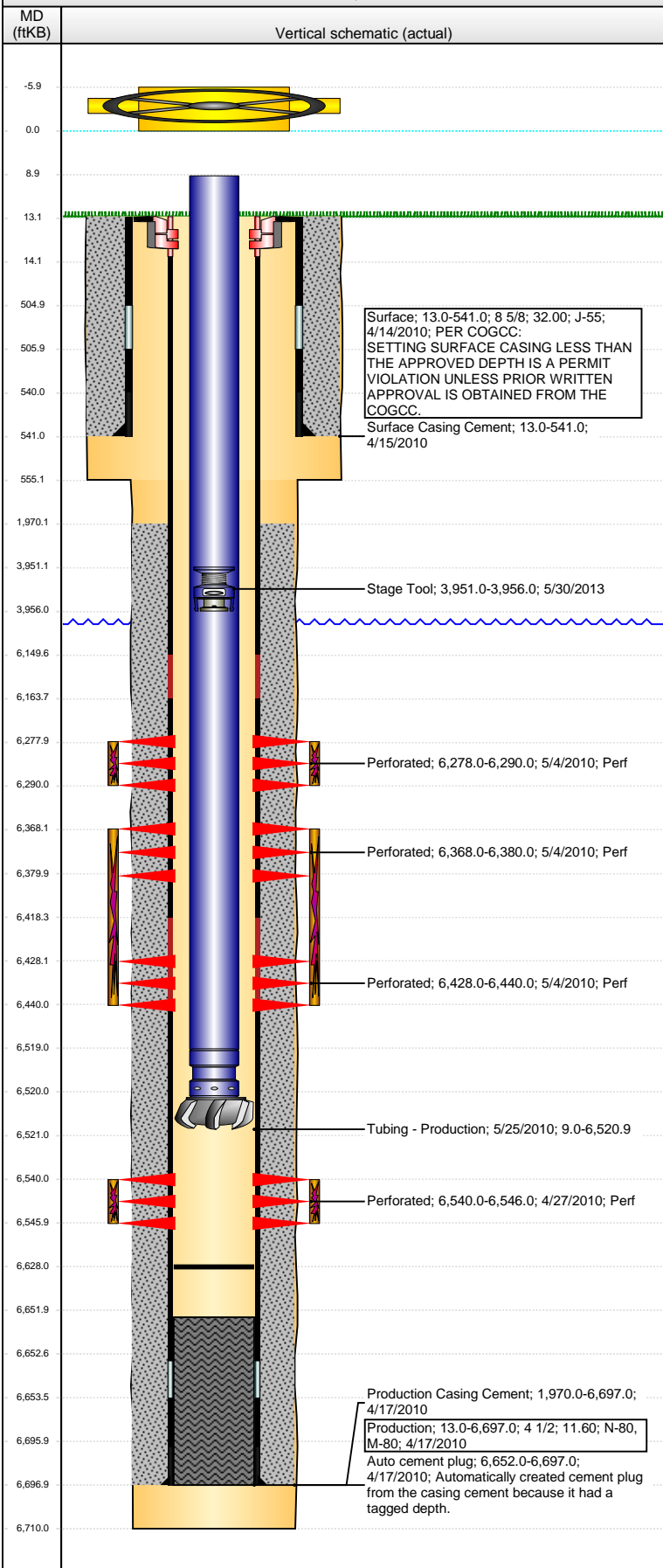
Tubing Strings							
Tubing Description	Run Date	String...	ID (in)	Wt (lb/ft)	Grade	Len (ft)	Set De...
Tubing - Production	5/25/2010	2 3/8	1.995	4.70	J-55	6,511.86	6,518.4

Tubing Components							
Item Des	OD (in)	Wt (lb/ft)	Grade	Jts	Len (ft)	Btm (ftKB)	Btm (TVD) (ftKB)
Tubing	2 3/8	4.70	J-55	210	6,510.01	6,519.0	
Pump Seating Nipple	2 3/8			1	1.10	6,520.1	6,517.7
Cutrite Blade Bit	3 7/8			1	0.75	6,520.9	6,518.4

Perforation Data					
Zone	Bnch/St g	Entered Shot Total	Top (ftKB)	Btm (ftKB)	Date
NIOBRARA, ORIGINAL HOLE	A	24	6,278.00	6,290.00	5/4/2010
NIOBRARA, ORIGINAL HOLE	B	24	6,368.00	6,380.00	5/4/2010
NIOBRARA, ORIGINAL HOLE	C	24	6,428.00	6,440.00	5/4/2010
CODELL, ORIGINAL HOLE	01	24	6,540.00	6,546.00	4/27/2010

**Well Name: WELLS RANCH AF06-16**

VERTICAL - ORIGINAL HOLE, 1/19/2016 11:16:29 AM



### Stimulations & Treatments

Date	Zone	Primary Job Type
5/4/2010	CODELL, ORIGINAL HOLE	DRILLING/COMPLETION - ORIGINAL

Technical Result	Tech Result Details	Tech Result Note
Success	According to Plan	

Comment  
(CODELL): REVERSE STEP RATE RESULTS: PO 16, NWB 577 PSI, WB 928 PSI, PPF 1027 PSI FOR A TOTAL OF 2532 PSI OF FRICTION. TREATMENT WENT WELL, NO ISSUES TO REPORT. AVG PRESS 4671 PSI, AVG RATE 61.9 BPM.

Date	Zone	Primary Job Type
5/4/2010	NIOBRARA, ORIGINAL HOLE	DRILLING/COMPLETION - ORIGINAL

Technical Result	Tech Result Details	Tech Result Note
Success	According to Plan	

Comment  
(NIO BC): TREATMENT WENT WELL, NO ISSUES TO REPORT. AVG PRESS 3903 PSI, AVG RATE 61 BPM.

Date	Zone	Primary Job Type
5/4/2010	NIOBRARA, ORIGINAL HOLE	DRILLING/COMPLETION - ORIGINAL

Technical Result	Tech Result Details	Tech Result Note
Success	According to Plan	

Comment  
(NIO A): HAD TO DROP RATE DURING PAD, THE FR-66 HOSE HAD A BLOCKAGE. SWAPPED HOSES AND CONTINUED JOB.

### Other In Hole

Run Date	Des	OD (in)	Top (ftKB)	Btm (ftKB)
5/30/2013	Stage Tool	2	3,951.0	3,956.0

### Logs

Date	Type	Top, MD (ftKB)	Btm, MD (ftKB)
4/17/2010	Caliper/Comp. Density/Neutron/GR/SP/ML	2,580.0	6,710.0
4/17/2010	DIL/GR/SP/Caliper	545.0	6,710.0
4/27/2010	CBL/CCL/GR	1,970.0	6,641.0
10/7/2014	GYRO	10.0	6,450.0