

# **BONANZA CREEK ENERGY INC.**

**WELD COUNTY, COLORADO (NAD 83)**

**SE SE SEC. 21 T5N R62W 6th P.M.**

**ANTELOPE T34-P31-21HNC**

**ORIGINAL WELLBORE**

**12 January, 2016**

**Plan: PROPOSAL #3**





Project: WELD COUNTY, COLORADO (NAD 83)  
Site: SE SE SEC. 21 T5N R62W 6th P.M.  
Well: ANTELOPE T34-P31-21HNC  
Wellbore: ORIGINAL WELLBORE  
Design: PROPOSAL #3

ANNOTATIONS

TVD	MD	Inc	Azi	+N/-S	+E/-W	VSect	Dep	Annotation
1950.0	1950.0	0.00	0.00	0.0	0.0	0.0	0.0	START NUDGE (2°/100ft BUR)
3372.2	3438.2	29.76	249.33	-133.4	-353.6	-28.2	377.9	EOB TO 29.76° INC
4443.6	4672.4	29.76	249.33	-349.6	-926.9	-74.0	990.6	END OF TANGENT
5865.7	6160.6	0.00	0.00	-483.0	-1280.5	-102.2	1368.5	EOD TO VERTICAL
5895.7	6190.6	0.00	0.00	-483.0	-1280.5	-102.2	1368.5	KOP (12°/100ft BUR)
6356.9	6815.6	75.00	359.89	-129.1	-1281.1	237.6	1722.4	START OF TANGENT
6382.8	6915.6	75.00	359.89	-32.5	-1281.3	330.3	1819.0	END OF TANGENT
6399.0	7040.6	90.00	359.89	91.1	-1281.6	448.9	1942.6	7" ICP - ANTELOPE T34-O31-21HNC (P3)
6399.0	11335.9	90.00	359.89	4386.3	-1289.7	4572.0	6237.9	BHL - ANTELOPE T34-O31-21HNC (P3)

PROPOSED LOCAL COORDINATES:

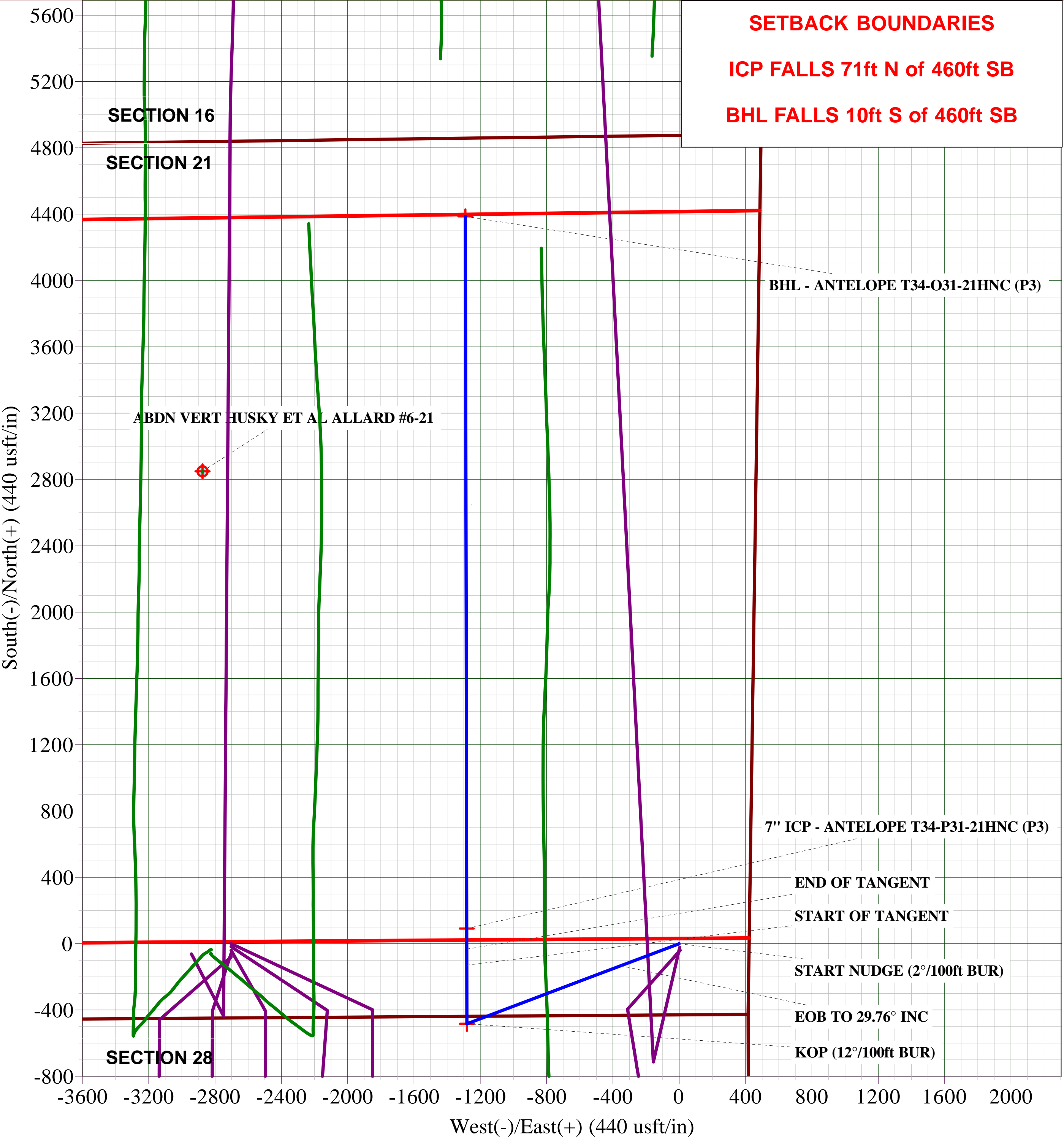
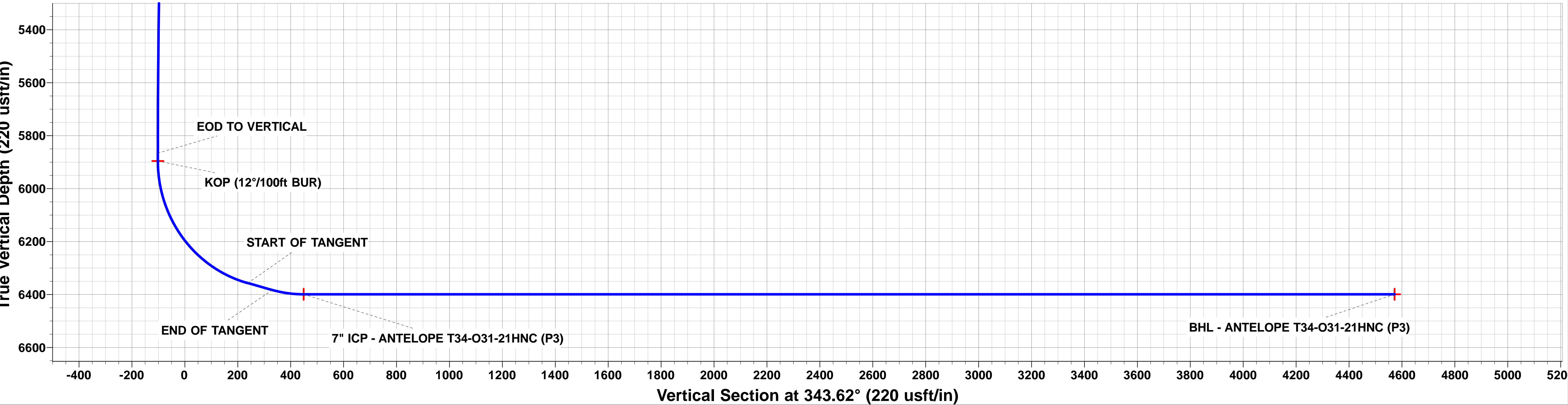
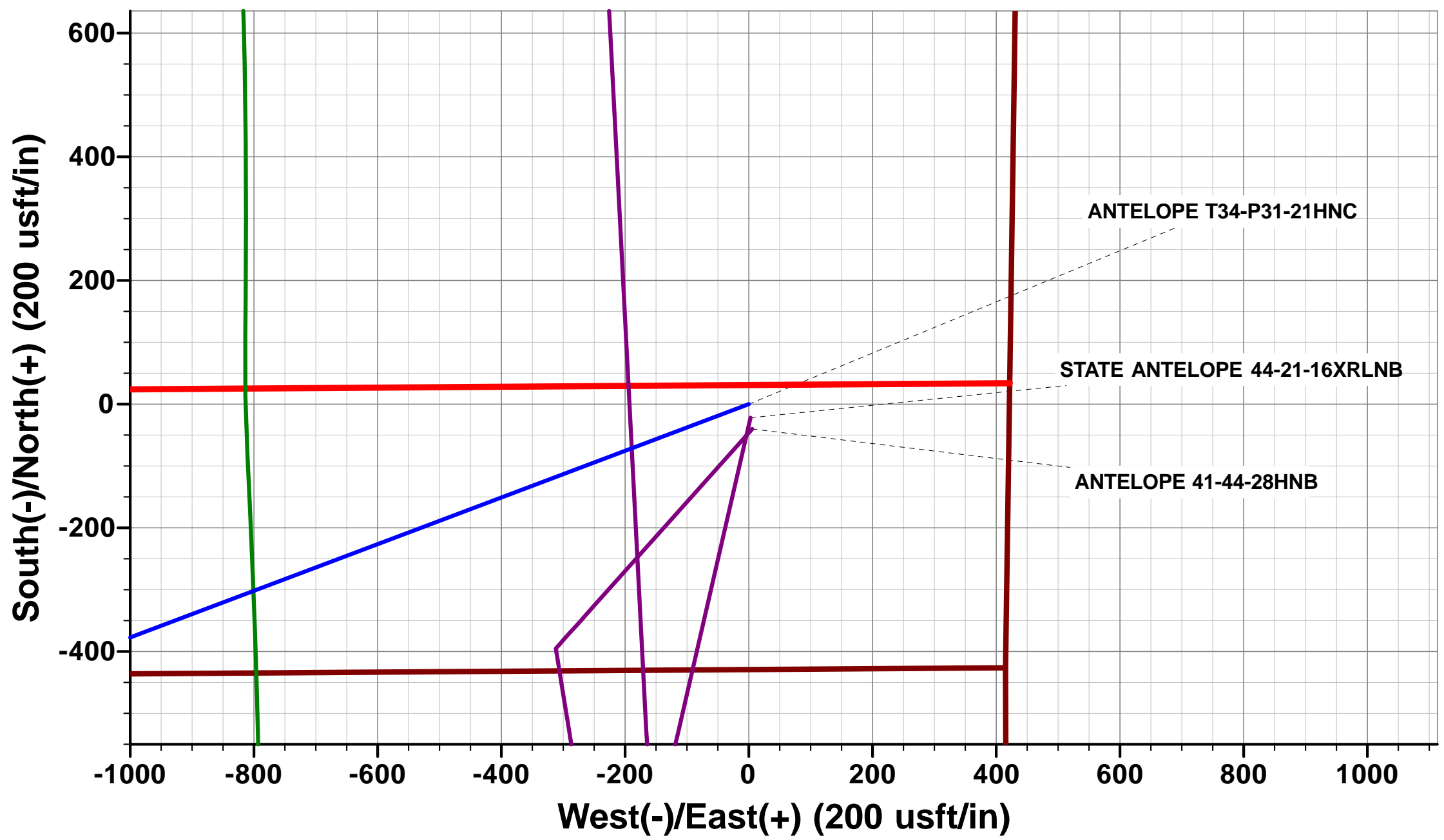
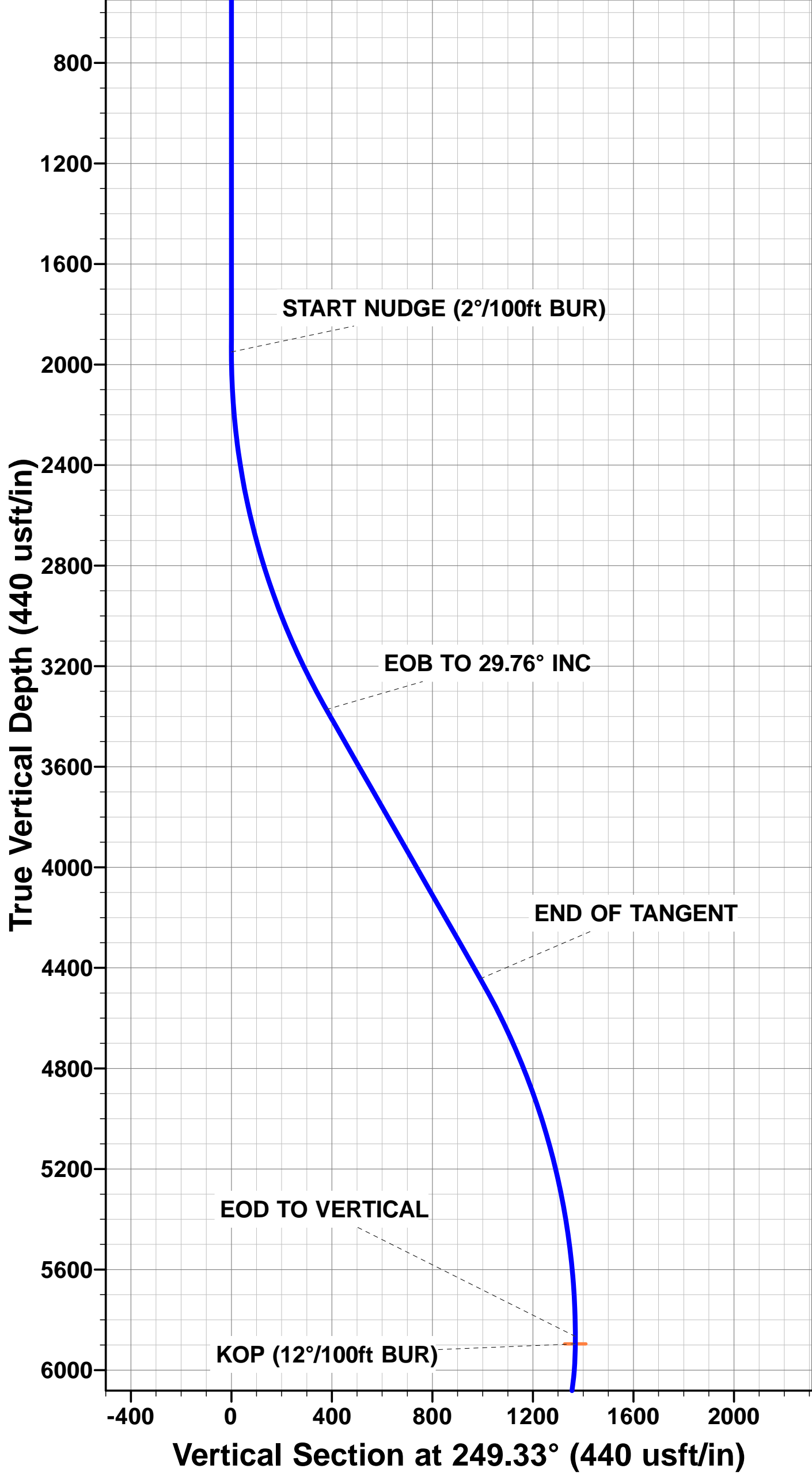
SHL: 430ft FSL & 423ft FEL Sec 21

7" ICP: 531ft FSL & 1705ft FEL Sec 21

BHL: 470ft FNL & 1777ft FEL Sec 21

WELLBORE TARGET DETAILS (LAT/LONG)

Name	TVD	+N/-S	+E/-W	Latitude	Longitude
KOP - ANTELOPE T34-O31-21HNC (P3)	5895.7	-483.0	-1280.5	40.377854	-104.325696
7" ICP - ANTELOPE T34-P31-21HNC (P3)	6399.0	91.1	-1281.6	40.379430	-104.325700
BHL - ANTELOPE T34-O31-21HNC (P3)	6399.0	4386.3	-1289.7	40.391220	-104.325730



<b>Database:</b>	EDM 5000.1 Single User Db	<b>Local Co-ordinate Reference:</b>	Well ANTELOPE T34-P31-21HNC
<b>Company:</b>	BONANZA CREEK ENERGY INC.	<b>TVD Reference:</b>	KB-EST @ 4699.0usft (Original Well Elev)
<b>Project:</b>	WELD COUNTY, COLORADO (NAD 83)	<b>MD Reference:</b>	KB-EST @ 4699.0usft (Original Well Elev)
<b>Site:</b>	SE SE SEC. 21 T5N R62W 6th P.M.	<b>North Reference:</b>	True
<b>Well:</b>	ANTELOPE T34-P31-21HNC	<b>Survey Calculation Method:</b>	Minimum Curvature
<b>Wellbore:</b>	ORIGINAL WELLBORE		
<b>Design:</b>	PROPOSAL #3		

<b>Project</b>	WELD COUNTY, COLORADO (NAD 83)		
<b>Map System:</b>	US State Plane 1983	<b>System Datum:</b>	Mean Sea Level
<b>Geo Datum:</b>	North American Datum 1983		
<b>Map Zone:</b>	Colorado Northern Zone		Using geodetic scale factor

Site	SE SE SEC. 21 T5N R62W 6th P.M.				
Site Position:		Northing:	1,383,089.52 usft	Latitude:	40.379020
From:	Lat/Long	Easting:	3,327,589.29 usft	Longitude:	-104.324110
Position Uncertainty:	0.0 usft	Slot Radius:	1.10000 ft	Grid Convergence:	0.76 °

Well	ANTELOPE T34-P31-21HNC					
Well Position	+N-S	58.3 usft	Northing:	1,383,158.93 usft	Latitude:	40.379180
	+E-W	838.6 usft	Easting:	3,328,427.02 usft	Longitude:	-104.321100
Position Uncertainty		0.0 usft	Wellhead Elevation:	usft	Ground Level:	4,682.0 usft

<b>Wellbore</b>	ORIGINAL WELLBORE				
<b>Magnetics</b>	<b>Model Name</b>	<b>Sample Date</b>	<b>Declination (°)</b>	<b>Dip Angle (°)</b>	<b>Field Strength (nT)</b>
	IGRF2015	16/10/2015	8.15	66.95	52,619

<b>Design</b>	PROPOSAL #3			
<b>Audit Notes:</b>				
<b>Version:</b>	<b>Phase:</b>	PROTOTYPE	<b>Tie On Depth:</b>	0.0
<b>Vertical Section:</b>	<b>Depth From (TVD) (usft)</b>	<b>+N-S (usft)</b>	<b>+E-W (usft)</b>	<b>Direction (°)</b>
	0.0	0.0	0.0	343.62

<b>Plan Sections</b>											
MD (usft)	Inc (°)	Azi (°)	Vertical Depth	SS (usft)	+N-S (usft)	+E-W (usft)	Dogleg Rate (°/100usf)	Build Rate (°/100usf)	Turn Rate (°/100usf)	TFO (°)	Target
0.0	0.00	0.00	0.0	-4,699.0	0.0	0.0	0.00	0.00	0.00	0.00	
1,950.0	0.00	0.00	1,950.0	-2,749.0	0.0	0.0	0.00	0.00	0.00	0.00	
3,438.2	29.76	249.33	3,372.1	-1,326.9	-133.4	-353.6	2.00	2.00	0.00	249.33	
4,672.4	29.76	249.33	4,443.6	-255.4	-349.6	-926.9	0.00	0.00	0.00	0.00	
6,160.6	0.00	0.00	5,865.7	1,166.7	-483.0	-1,280.5	2.00	-2.00	0.00	180.00	
6,190.6	0.00	0.00	5,895.7	1,196.7	-483.0	-1,280.5	0.00	0.00	0.00	0.00	KOP - ANTELOPE
6,815.6	75.00	359.89	6,356.9	1,657.9	-129.1	-1,281.1	12.00	12.00	0.00	359.89	
6,915.6	75.00	359.89	6,382.8	1,683.8	-32.5	-1,281.3	0.00	0.00	0.00	0.00	
7,040.6	90.00	359.89	6,399.0	1,700.0	91.1	-1,281.6	12.00	12.00	0.00	0.00	
11,335.9	90.00	359.89	6,399.0	1,700.0	4,386.3	-1,289.7	0.00	0.00	0.00	63.02	BHL - ANTELOPE

<b>Database:</b>	EDM 5000.1 Single User Db	<b>Local Co-ordinate Reference:</b>	Well ANTELOPE T34-P31-21HNC
<b>Company:</b>	BONANZA CREEK ENERGY INC.	<b>TVD Reference:</b>	KB-EST @ 4699.0usft (Original Well Elev)
<b>Project:</b>	WELD COUNTY, COLORADO (NAD 83)	<b>MD Reference:</b>	KB-EST @ 4699.0usft (Original Well Elev)
<b>Site:</b>	SE SE SEC. 21 T5N R62W 6th P.M.	<b>North Reference:</b>	True
<b>Well:</b>	ANTELOPE T34-P31-21HNC	<b>Survey Calculation Method:</b>	Minimum Curvature
<b>Wellbore:</b>	ORIGINAL WELLBORE		
<b>Design:</b>	PROPOSAL #3		

## Planned Survey

MD (usft)	Inc (°)	Azi (°)	TVD (usft)	SS (usft)	+N/-S (usft)	+E/-W (usft)	Vertical Section (usft)	Dogleg Rate (°/100usft)	Build Rate (°/100usft)	Turn Rate (°/100usft)
0.0	0.00	0.00	0.0	4,699.00	0.0	0.0	0.0	0.00	0.00	0.00
100.0	0.00	0.00	100.0	4,599.00	0.0	0.0	0.0	0.00	0.00	0.00
200.0	0.00	0.00	200.0	4,499.00	0.0	0.0	0.0	0.00	0.00	0.00
300.0	0.00	0.00	300.0	4,399.00	0.0	0.0	0.0	0.00	0.00	0.00
400.0	0.00	0.00	400.0	4,299.00	0.0	0.0	0.0	0.00	0.00	0.00
500.0	0.00	0.00	500.0	4,199.00	0.0	0.0	0.0	0.00	0.00	0.00
600.0	0.00	0.00	600.0	4,099.00	0.0	0.0	0.0	0.00	0.00	0.00
700.0	0.00	0.00	700.0	3,999.00	0.0	0.0	0.0	0.00	0.00	0.00
800.0	0.00	0.00	800.0	3,899.00	0.0	0.0	0.0	0.00	0.00	0.00
900.0	0.00	0.00	900.0	3,799.00	0.0	0.0	0.0	0.00	0.00	0.00
1,000.0	0.00	0.00	1,000.0	3,699.00	0.0	0.0	0.0	0.00	0.00	0.00
1,100.0	0.00	0.00	1,100.0	3,599.00	0.0	0.0	0.0	0.00	0.00	0.00
1,200.0	0.00	0.00	1,200.0	3,499.00	0.0	0.0	0.0	0.00	0.00	0.00
1,300.0	0.00	0.00	1,300.0	3,399.00	0.0	0.0	0.0	0.00	0.00	0.00
1,400.0	0.00	0.00	1,400.0	3,299.00	0.0	0.0	0.0	0.00	0.00	0.00
1,500.0	0.00	0.00	1,500.0	3,199.00	0.0	0.0	0.0	0.00	0.00	0.00
1,600.0	0.00	0.00	1,600.0	3,099.00	0.0	0.0	0.0	0.00	0.00	0.00
1,700.0	0.00	0.00	1,700.0	2,999.00	0.0	0.0	0.0	0.00	0.00	0.00
1,800.0	0.00	0.00	1,800.0	2,899.00	0.0	0.0	0.0	0.00	0.00	0.00
1,900.0	0.00	0.00	1,900.0	2,799.00	0.0	0.0	0.0	0.00	0.00	0.00
<b>START NUDGE (2°/100ft BUR)</b>										
1,950.0	0.00	0.00	1,950.0	2,749.00	0.0	0.0	0.0	0.00	0.00	0.00
2,000.0	1.00	249.33	2,000.0	2,699.00	-0.2	-0.4	0.0	2.00	2.00	0.00
2,100.0	3.00	249.33	2,099.9	2,599.07	-1.4	-3.7	-0.3	2.00	2.00	0.00
2,200.0	5.00	249.33	2,199.7	2,499.32	-3.8	-10.2	-0.8	2.00	2.00	0.00
2,300.0	7.00	249.33	2,299.1	2,399.87	-7.5	-20.0	-1.6	2.00	2.00	0.00
2,400.0	9.00	249.33	2,398.2	2,300.85	-12.4	-33.0	-2.6	2.00	2.00	0.00
2,500.0	11.00	249.33	2,496.6	2,202.37	-18.6	-49.2	-3.9	2.00	2.00	0.00
2,600.0	13.00	249.33	2,594.4	2,104.56	-25.9	-68.7	-5.5	2.00	2.00	0.00
2,700.0	15.00	249.33	2,691.5	2,007.54	-34.5	-91.3	-7.3	2.00	2.00	0.00
2,800.0	17.00	249.33	2,787.6	1,911.42	-44.2	-117.1	-9.3	2.00	2.00	0.00
2,900.0	19.00	249.33	2,882.7	1,816.32	-55.1	-146.0	-11.7	2.00	2.00	0.00
3,000.0	21.00	249.33	2,976.6	1,722.35	-67.2	-178.0	-14.2	2.00	2.00	0.00
3,100.0	23.00	249.33	3,069.4	1,629.64	-80.4	-213.1	-17.0	2.00	2.00	0.00
3,200.0	25.00	249.33	3,160.7	1,538.29	-94.7	-251.1	-20.0	2.00	2.00	0.00
3,300.0	27.00	249.33	3,250.6	1,448.41	-110.2	-292.2	-23.3	2.00	2.00	0.00
3,400.0	29.00	249.33	3,338.9	1,360.12	-126.8	-336.1	-26.8	2.00	2.00	0.00
<b>EOB TO 29.76° INC</b>										
3,438.2	29.76	249.33	3,372.2	1,326.84	-133.4	-353.6	-28.2	2.00	2.00	0.00
3,500.0	29.76	249.33	3,425.8	1,273.19	-144.2	-382.3	-30.5	0.00	0.00	0.00
3,600.0	29.76	249.33	3,512.6	1,186.38	-161.7	-428.8	-34.2	0.00	0.00	0.00
3,700.0	29.76	249.33	3,599.4	1,099.57	-179.2	-475.2	-37.9	0.00	0.00	0.00
3,800.0	29.76	249.33	3,686.2	1,012.76	-196.8	-521.7	-41.6	0.00	0.00	0.00
3,900.0	29.76	249.33	3,773.0	925.96	-214.3	-568.1	-45.3	0.00	0.00	0.00
4,000.0	29.76	249.33	3,859.9	839.15	-231.8	-614.6	-49.0	0.00	0.00	0.00
4,100.0	29.76	249.33	3,946.7	752.34	-249.3	-661.0	-52.7	0.00	0.00	0.00
4,200.0	29.76	249.33	4,033.5	665.53	-266.8	-707.4	-56.4	0.00	0.00	0.00
4,300.0	29.76	249.33	4,120.3	578.72	-284.4	-753.9	-60.2	0.00	0.00	0.00
4,400.0	29.76	249.33	4,207.1	491.91	-301.9	-800.3	-63.9	0.00	0.00	0.00
4,500.0	29.76	249.33	4,293.9	405.10	-319.4	-846.8	-67.6	0.00	0.00	0.00
4,600.0	29.76	249.33	4,380.7	318.30	-336.9	-893.2	-71.3	0.00	0.00	0.00
<b>END OF TANGENT</b>										
4,672.4	29.76	249.33	4,443.6	255.45	-349.6	-926.9	-74.0	0.00	0.00	0.00

<b>Database:</b>	EDM 5000.1 Single User Db	<b>Local Co-ordinate Reference:</b>	Well ANTELOPE T34-P31-21HNC
<b>Company:</b>	BONANZA CREEK ENERGY INC.	<b>TVD Reference:</b>	KB-EST @ 4699.0usft (Original Well Elev)
<b>Project:</b>	WELD COUNTY, COLORADO (NAD 83)	<b>MD Reference:</b>	KB-EST @ 4699.0usft (Original Well Elev)
<b>Site:</b>	SE SE SEC. 21 T5N R62W 6th P.M.	<b>North Reference:</b>	True
<b>Well:</b>	ANTELOPE T34-P31-21HNC	<b>Survey Calculation Method:</b>	Minimum Curvature
<b>Wellbore:</b>	ORIGINAL WELLBORE		
<b>Design:</b>	PROPOSAL #3		

## Planned Survey

MD (usft)	Inc (°)	Azi (°)	TVD (usft)	SS (usft)	+N/-S (usft)	+E/-W (usft)	Vertical Section (usft)	Dogleg Rate (°/100usft)	Build Rate (°/100usft)	Turn Rate (°/100usft)
4,700.0	29.21	249.33	4,467.6	231.42	-354.4	-939.6	-75.0	2.00	-2.00	0.00
4,800.0	27.21	249.33	4,555.7	143.31	-371.1	-983.8	-78.5	2.00	-2.00	0.00
4,900.0	25.21	249.33	4,645.4	53.59	-386.7	-1,025.1	-81.8	2.00	-2.00	0.00
5,000.0	23.21	249.33	4,736.6	-37.61	-401.1	-1,063.5	-84.9	2.00	-2.00	0.00
5,100.0	21.21	249.33	4,829.2	-130.18	-414.5	-1,098.9	-87.7	2.00	-2.00	0.00
5,200.0	19.21	249.33	4,923.0	-224.02	-426.7	-1,131.2	-90.3	2.00	-2.00	0.00
5,300.0	17.21	249.33	5,018.0	-319.00	-437.7	-1,160.4	-92.6	2.00	-2.00	0.00
5,400.0	15.21	249.33	5,114.0	-415.02	-447.6	-1,186.6	-94.7	2.00	-2.00	0.00
5,500.0	13.21	249.33	5,211.0	-511.96	-456.2	-1,209.5	-96.5	2.00	-2.00	0.00
5,600.0	11.21	249.33	5,308.7	-609.69	-463.7	-1,229.3	-98.1	2.00	-2.00	0.00
5,700.0	9.21	249.33	5,407.1	-708.10	-469.9	-1,245.9	-99.4	2.00	-2.00	0.00
5,800.0	7.21	249.33	5,506.1	-807.07	-475.0	-1,259.3	-100.5	2.00	-2.00	0.00
5,900.0	5.21	249.33	5,605.5	-906.48	-478.8	-1,269.4	-101.3	2.00	-2.00	0.00
6,000.0	3.21	249.33	5,705.2	-1,006.20	-481.4	-1,276.3	-101.8	2.00	-2.00	0.00
6,100.0	1.21	249.33	5,805.1	-1,106.12	-482.8	-1,279.9	-102.1	2.00	-2.00	0.00
<b>EOD TO VERTICAL</b>										
<b>6,160.6</b>	<b>0.00</b>	<b>0.00</b>	<b>5,865.7</b>	<b>-1,166.72</b>	<b>-483.0</b>	<b>-1,280.5</b>	<b>-102.2</b>	<b>2.00</b>	<b>-2.00</b>	<b>0.00</b>
<b>KOP (12°/100ft BUR)</b>										
<b>6,190.6</b>	<b>0.00</b>	<b>0.00</b>	<b>5,895.7</b>	<b>-1,196.72</b>	<b>-483.0</b>	<b>-1,280.5</b>	<b>-102.2</b>	<b>0.00</b>	<b>0.00</b>	<b>0.00</b>
6,200.0	1.13	359.89	5,905.1	-1,206.12	-482.9	-1,280.5	-102.1	12.02	12.02	0.00
6,300.0	13.13	359.89	6,004.2	-1,305.16	-470.5	-1,280.5	-90.2	12.00	12.00	0.00
6,400.0	25.13	359.89	6,098.5	-1,399.47	-437.8	-1,280.6	-58.8	12.00	12.00	0.00
6,500.0	37.13	359.89	6,183.9	-1,484.91	-386.2	-1,280.7	-9.2	12.00	12.00	0.00
6,600.0	49.13	359.89	6,256.8	-1,557.76	-317.9	-1,280.8	56.3	12.00	12.00	0.00
6,700.0	61.13	359.89	6,313.8	-1,614.83	-236.1	-1,280.9	134.9	12.00	12.00	0.00
6,800.0	73.13	359.89	6,352.6	-1,653.62	-144.1	-1,281.1	223.2	12.00	12.00	0.00
<b>START OF TANGENT</b>										
<b>6,815.6</b>	<b>75.00</b>	<b>359.89</b>	<b>6,356.9</b>	<b>-1,657.90</b>	<b>-129.1</b>	<b>-1,281.1</b>	<b>237.6</b>	<b>11.99</b>	<b>11.99</b>	<b>0.00</b>
6,900.0	75.00	359.89	6,378.7	-1,679.74	-47.6	-1,281.3	315.8	0.00	0.00	0.00
<b>END OF TANGENT</b>										
<b>6,915.6</b>	<b>75.00</b>	<b>359.89</b>	<b>6,382.8</b>	<b>-1,683.78</b>	<b>-32.5</b>	<b>-1,281.3</b>	<b>330.3</b>	<b>0.00</b>	<b>0.00</b>	<b>0.00</b>
7,000.0	85.13	359.89	6,397.3	-1,698.32	50.5	-1,281.5	410.0	12.00	12.00	0.00
<b>7" ICP - ANTELOPE T34-O31-21HNC (P3)</b>										
<b>7,040.6</b>	<b>90.00</b>	<b>359.89</b>	<b>6,399.0</b>	<b>-1,700.05</b>	<b>91.1</b>	<b>-1,281.6</b>	<b>448.9</b>	<b>11.99</b>	<b>11.99</b>	<b>0.00</b>
7,100.0	90.00	359.89	6,399.0	-1,700.05	150.5	-1,281.7	505.9	0.00	0.00	0.00
7,200.0	90.00	359.89	6,399.0	-1,700.05	250.5	-1,281.9	601.9	0.00	0.00	0.00
7,300.0	90.00	359.89	6,399.0	-1,700.05	350.5	-1,282.1	697.9	0.00	0.00	0.00
7,400.0	90.00	359.89	6,399.0	-1,700.05	450.5	-1,282.3	793.9	0.00	0.00	0.00
7,500.0	90.00	359.89	6,399.0	-1,700.05	550.5	-1,282.4	889.9	0.00	0.00	0.00
7,600.0	90.00	359.89	6,399.0	-1,700.05	650.5	-1,282.6	985.9	0.00	0.00	0.00
7,700.0	90.00	359.89	6,399.0	-1,700.05	750.5	-1,282.8	1,081.9	0.00	0.00	0.00
7,800.0	90.00	359.89	6,399.0	-1,700.05	850.5	-1,283.0	1,177.9	0.00	0.00	0.00
7,900.0	90.00	359.89	6,399.0	-1,700.04	950.5	-1,283.2	1,273.9	0.00	0.00	0.00
8,000.0	90.00	359.89	6,399.0	-1,700.04	1,050.5	-1,283.4	1,369.9	0.00	0.00	0.00
8,100.0	90.00	359.89	6,399.0	-1,700.04	1,150.5	-1,283.6	1,465.9	0.00	0.00	0.00
8,200.0	90.00	359.89	6,399.0	-1,700.04	1,250.5	-1,283.8	1,561.8	0.00	0.00	0.00
8,300.0	90.00	359.89	6,399.0	-1,700.04	1,350.5	-1,284.0	1,657.8	0.00	0.00	0.00
8,400.0	90.00	359.89	6,399.0	-1,700.04	1,450.5	-1,284.2	1,753.8	0.00	0.00	0.00
8,500.0	90.00	359.89	6,399.0	-1,700.04	1,550.5	-1,284.4	1,849.8	0.00	0.00	0.00
8,600.0	90.00	359.89	6,399.0	-1,700.04	1,650.5	-1,284.5	1,945.8	0.00	0.00	0.00
8,700.0	90.00	359.89	6,399.0	-1,700.04	1,750.5	-1,284.7	2,041.8	0.00	0.00	0.00
8,800.0	90.00	359.89	6,399.0	-1,700.04	1,850.5	-1,284.9	2,137.8	0.00	0.00	0.00
8,900.0	90.00	359.89	6,399.0	-1,700.04	1,950.5	-1,285.1	2,233.8	0.00	0.00	0.00
9,000.0	90.00	359.89	6,399.0	-1,700.04	2,050.5	-1,285.3	2,329.8	0.00	0.00	0.00



<b>Database:</b>	EDM 5000.1 Single User Db	<b>Local Co-ordinate Reference:</b>	Well ANTELOPE T34-P31-21HNC
<b>Company:</b>	BONANZA CREEK ENERGY INC.	<b>TVD Reference:</b>	KB-EST @ 4699.0usft (Original Well Elev)
<b>Project:</b>	WELD COUNTY, COLORADO (NAD 83)	<b>MD Reference:</b>	KB-EST @ 4699.0usft (Original Well Elev)
<b>Site:</b>	SE SE SEC. 21 T5N R62W 6th P.M.	<b>North Reference:</b>	True
<b>Well:</b>	ANTELOPE T34-P31-21HNC	<b>Survey Calculation Method:</b>	Minimum Curvature
<b>Wellbore:</b>	ORIGINAL WELLBORE		
<b>Design:</b>	PROPOSAL #3		

## Planned Survey

MD (usft)	Inc (°)	Azi (°)	TVD (usft)	SS (usft)	+N/-S (usft)	+E/-W (usft)	Vertical Section (usft)	Dogleg Rate (°/100usft)	Build Rate (°/100usft)	Turn Rate (°/100usft)
9,100.0	90.00	359.89	6,399.0	-1,700.04	2,150.5	-1,285.5	2,425.8	0.00	0.00	0.00
9,200.0	90.00	359.89	6,399.0	-1,700.03	2,250.5	-1,285.7	2,521.8	0.00	0.00	0.00
9,300.0	90.00	359.89	6,399.0	-1,700.03	2,350.5	-1,285.9	2,617.8	0.00	0.00	0.00
9,400.0	90.00	359.89	6,399.0	-1,700.03	2,450.5	-1,286.1	2,713.8	0.00	0.00	0.00
9,500.0	90.00	359.89	6,399.0	-1,700.03	2,550.5	-1,286.3	2,809.7	0.00	0.00	0.00
9,600.0	90.00	359.89	6,399.0	-1,700.03	2,650.5	-1,286.4	2,905.7	0.00	0.00	0.00
9,700.0	90.00	359.89	6,399.0	-1,700.03	2,750.5	-1,286.6	3,001.7	0.00	0.00	0.00
9,800.0	90.00	359.89	6,399.0	-1,700.03	2,850.5	-1,286.8	3,097.7	0.00	0.00	0.00
9,900.0	90.00	359.89	6,399.0	-1,700.03	2,950.5	-1,287.0	3,193.7	0.00	0.00	0.00
10,000.0	90.00	359.89	6,399.0	-1,700.02	3,050.5	-1,287.2	3,289.7	0.00	0.00	0.00
10,100.0	90.00	359.89	6,399.0	-1,700.02	3,150.5	-1,287.4	3,385.7	0.00	0.00	0.00
10,200.0	90.00	359.89	6,399.0	-1,700.02	3,250.5	-1,287.6	3,481.7	0.00	0.00	0.00
10,300.0	90.00	359.89	6,399.0	-1,700.02	3,350.5	-1,287.8	3,577.7	0.00	0.00	0.00
10,400.0	90.00	359.89	6,399.0	-1,700.02	3,450.5	-1,288.0	3,673.7	0.00	0.00	0.00
10,500.0	90.00	359.89	6,399.0	-1,700.02	3,550.5	-1,288.1	3,769.7	0.00	0.00	0.00
10,600.0	90.00	359.89	6,399.0	-1,700.01	3,650.5	-1,288.3	3,865.7	0.00	0.00	0.00
10,700.0	90.00	359.89	6,399.0	-1,700.01	3,750.5	-1,288.5	3,961.6	0.00	0.00	0.00
10,800.0	90.00	359.89	6,399.0	-1,700.01	3,850.5	-1,288.7	4,057.6	0.00	0.00	0.00
10,900.0	90.00	359.89	6,399.0	-1,700.01	3,950.5	-1,288.9	4,153.6	0.00	0.00	0.00
11,000.0	90.00	359.89	6,399.0	-1,700.01	4,050.5	-1,289.1	4,249.6	0.00	0.00	0.00
11,100.0	90.00	359.89	6,399.0	-1,700.00	4,150.5	-1,289.3	4,345.6	0.00	0.00	0.00
11,200.0	90.00	359.89	6,399.0	-1,700.00	4,250.5	-1,289.5	4,441.6	0.00	0.00	0.00
11,300.0	90.00	359.89	6,399.0	-1,700.00	4,350.5	-1,289.7	4,537.6	0.00	0.00	0.00
<b>BHL - ANTELOPE T34-O31-21HNC (P3)</b>										
<b>11,335.9</b>	<b>90.00</b>	<b>359.89</b>	<b>6,399.0</b>	<b>-1,700.00</b>	<b>4,386.3</b>	<b>-1,289.7</b>	<b>4,572.0</b>	<b>0.00</b>	<b>0.00</b>	<b>0.00</b>

## Plan Annotations

MD (usft)	TVD (usft)	Local Coordinates		Comment
		+N/-S (usft)	+E/-W (usft)	
1,950.0	1,950.0	0.0	0.0	START NUDGE (2°/100ft BUR)
3,438.2	3,372.2	-133.4	-353.6	EOB TO 29.76° INC
4,672.4	4,443.6	-349.6	-926.9	END OF TANGENT
6,160.6	5,865.7	-483.0	-1,280.5	EOD TO VERTICAL
6,190.6	5,895.7	-483.0	-1,280.5	KOP (12°/100ft BUR)
6,815.6	6,356.9	-129.1	-1,281.1	START OF TANGENT
6,915.6	6,382.8	-32.5	-1,281.3	END OF TANGENT
7,040.6	6,399.0	91.1	-1,281.6	7" ICP - ANTELOPE T34-O31-21HNC (P3)
11,335.9	6,399.0	4,386.3	-1,289.7	BHL - ANTELOPE T34-O31-21HNC (P3)