

WPX Energy Rocky Mountain LLC - EBUS

RU 433-7

Nabors 576

Post Job Summary

Cement Surface Casing

Date Prepared: 4/30/2015
Job Date: 4/6/2015

Submitted by: Patrick Ealey – Grand Junction Cement Engineer

The Road to Excellence Starts with Safety

Sold To #: 300721	Ship To #: 3599721	Quote #:	Sales Order #: 0902299229
Customer: WPX ENERGY ROCKY MOUNTAIN LLC-EBUS		Customer Rep: AL HARTL	
Well Name: YOUNBERG RU		Well #: 433-7	API/UWI #: 05-045-22513-00
Field: RULISON	City (SAP): RIFLE	County/Parish: GARFIELD	State: COLORADO
Legal Description: SE SE-7-7S-93W-1146FSL-1193FEL			
Contractor: NABORS DRLG		Rig/Platform Name/Num: NABORS 576	
Job BOM: 7521			
Well Type: DIRECTIONAL GAS			
Sales Person: HALAMERICA\HB50180		Srv Supervisor: Jesse Slaughter	

Job

Formation Name	
Formation Depth (MD)	Top
Form Type	BHST
Job depth MD	1355ft
Water Depth	Wk Ht Above Floor 4ft
Perforation Depth (MD)	From
	To

Well Data

Description	New / Used	Size in	ID in	Weight lbm/ft	Thread	Grade	Top MD ft	Bottom MD ft	Top TVD ft	Bottom TVD ft
Casing	0	9.625	9.001	32.3	8 RD (LT&C)	H-40	0	1355	0	0
Open Hole Section			13.5				0	1375	0	0

Tools and Accessories

Type	Size in	Qty	Make	Depth ft	Type	Size in	Qty	Make
Guide Shoe	9.625	1		1355	Top Plug	9.625	1	HES
Float Shoe	9.625	1			Bottom Plug	9.625		HES
Float Collar	9.625	1			SSR plug set	9.625		HES
Insert Float	9.625	1			Plug Container	9.625	1	HES
Stage Tool	9.625	1			Centralizers	9.625		HES

Miscellaneous Materials

Gelling Agt	Conc	Surfactant	Conc	Acid Type	Qty	Conc
Treatment Fld	Conc	Inhibitor	Conc	Sand Type	Size	Qty

Fluid Data

Stage/Plug #: 1

Fluid #	Stage Type	Fluid Name	Qty	Qty UoM	Mixing Density lbm/gal	Yield ft3/sack	Mix Fluid Gal	Rate bbl/min	Total Mix Fluid Gal
1	Fresh Water	Fresh Water	20	bbl	8.34			4	

Fluid #	Stage Type	Fluid Name	Qty	Qty UoM	Mixing Density lbm/gal	Yield ft3/sack	Mix Fluid Gal	Rate bbl/min	Total Mix Fluid Gal
2	VariCem GJ1	VARICEM (TM) CEMENT	175	sack	12.3	2.38		8	13.77

13.77 Gal		FRESH WATER							
0.25 lbm		POLY-E-FLAKE (101216940)							
Fluid #	Stage Type	Fluid Name	Qty	Qty UoM	Mixing Density lbm/gal	Yield ft3/sack	Mix Fluid Gal	Rate bbl/min	Total Mix Fluid Gal
3	VariCem GJ1	VARICEM (TM) CEMENT	175	sack	12.8	2.116		8	11.78
0.25 lbm		POLY-E-FLAKE (101216940)							
11.78 Gal		FRESH WATER							
Fluid #	Stage Type	Fluid Name	Qty	Qty UoM	Mixing Density lbm/gal	Yield ft3/sack	Mix Fluid Gal	Rate bbl/min	Total Mix Fluid Gal
4	Fresh Water Displacement	Fresh Water Displacement	103	bbl	8.34			10	
Cement Left In Pipe		Amount	46 ft		Reason		Shoe Joint		
Comment									

1.0 Real-Time Job Summary

1.1 Job Event Log

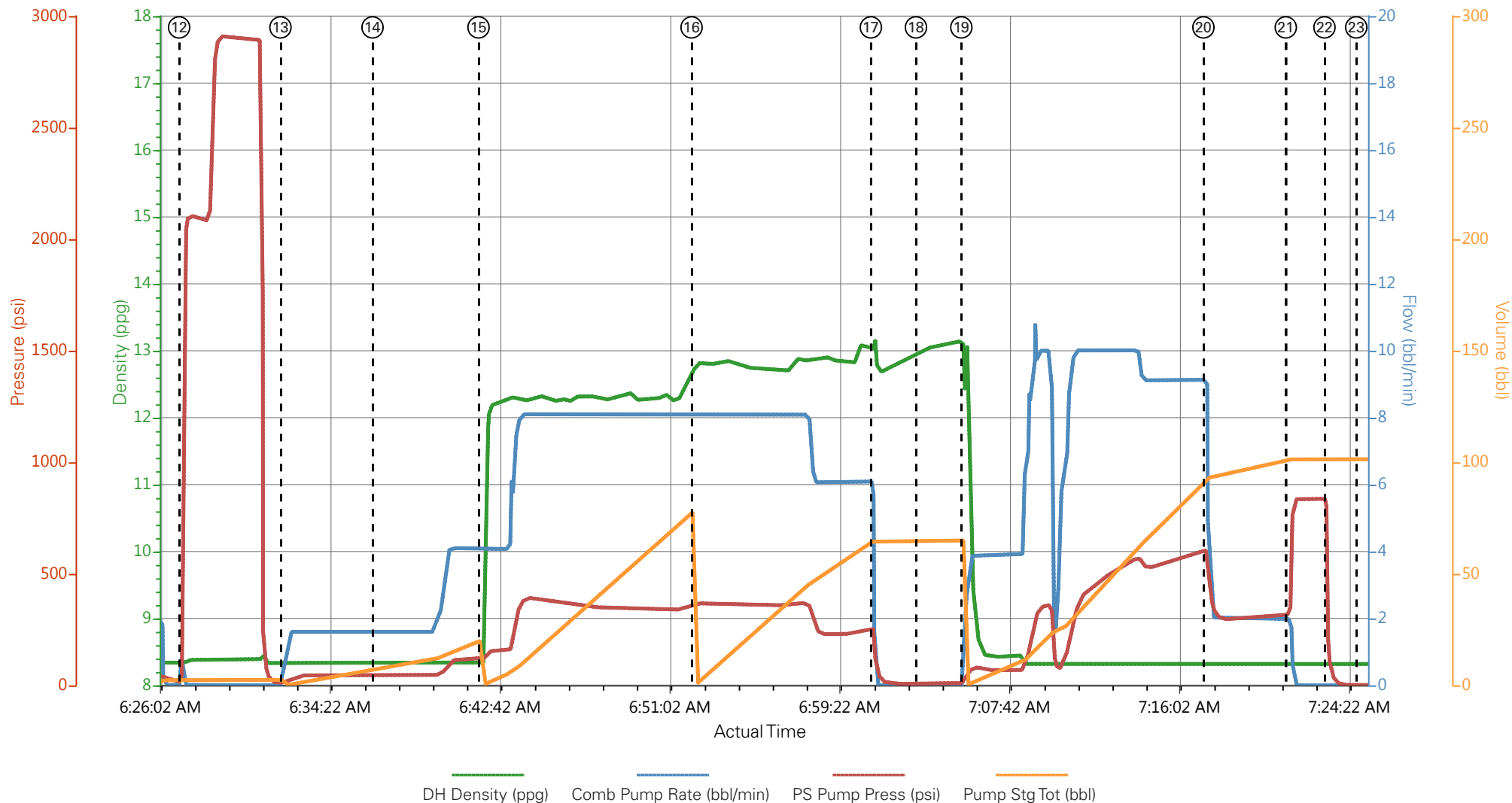
Type	Seq No.	Activity	Date	Time	Source	DH Density (ppg)	Comb Pump Rate (bbl/min)	PS Pump Press (psi)	Pump Stg Tot (bbl)	Comments
Event	1	Call Out	4/5/2015	21:00:00	USER					
Event	2	Pre-Convoy Safety Meeting	4/5/2015	22:20:00	USER					WITH ALL HES PERSONNEL
Event	3	Crew Leave Yard	4/5/2015	22:30:00	USER					
Event	4	Arrive At Loc	4/6/2015	01:30:00	USER					RIG WAS RUNNING CASING UPON HES ARRIVAL
Event	5	Assessment Of Location Safety Meeting	4/6/2015	04:00:00	USER					WITH ALL HES PERSONNEL
Event	6	Other	4/6/2015	04:10:00	USER					1 PUMP, 2 660 FT3/FT BULK TRUCKS
Event	7	Pre-Rig Up Safety Meeting	4/6/2015	04:20:00	USER					WITH ALL HES PERSONNEL
Event	8	Rig-Up Equipment	4/6/2015	04:30:00	USER					
Event	9	Pre-Job Safety Meeting	4/6/2015	06:10:00	USER					WITH ALL PERSONNEL
Event	10	Start Job	4/6/2015	06:24:12	COM7					TD 1375 FT, TP 1375 FT, TP 1355 FT, SHOE 46.43 FT, CSG 9 5/8 IN 32.3 LB/FT, HOLE 13 1/2 IN, MUD WT 9.8 PPG
Event	11	Prime Pumps	4/6/2015	06:24:52	COM7	8.33	2.0	45.0	2.0	FRESH WATER
Event	12	Test Lines	4/6/2015	06:27:05	COM7					TESTED LINES TO 2910 PSI PRESSURE

HOLDING

Event	13	Pump Spacer 1	4/6/2015	06:32:04	COM7	8.34	4.0	120.0	20.0	FRESH WATER
Event	14	Check Weight	4/6/2015	06:36:35	COM7					TUB WEIGHED 12.3 PPG
Event	15	Pump Lead Cement	4/6/2015	06:41:47	COM7	12.3	8.0	364.0	74.2	175 SKS AT 12.3 PPG, 2.38 FT3/SK, 13.70 GAL/SK
Event	16	Pump Tail Cement	4/6/2015	06:52:14	COM7	12.8	8.0	260.0	65.8	175 SKS AT 12.8 PPG, 2.11 FT3/SK, 11.78 GAL/SK
Event	17	Shutdown	4/6/2015	07:01:02	USER					
Event	18	Drop Top Plug	4/6/2015	07:03:14	USER					PLUG LAUNCHED
Event	19	Pump Displacement	4/6/2015	07:05:28	COM7	8.33	10.0	600.0	103	FRESH WATER
Event	20	Slow Rate	4/6/2015	07:17:20	USER	8.33	2.0	320.0	93	SLOWED RATE 10 BBLS PRIOR TO CALCULATED DISPLACEMENT
Event	21	Bump Plug	4/6/2015	07:21:23	USER			836.0		
Event	22	Check Floats	4/6/2015	07:23:17	USER					FLOATS HOLDING. HES RETURNED 1/2 BBL H2O TO PUMP
Event	23	End Job	4/6/2015	07:24:50	COM7					PIPE WAS STATIC DURING JOB, GOOD CIRCULATION THROUGHOUT JOB.
Event	24	Pre-Rig Down Safety Meeting	4/6/2015	07:31:36	USER					WITH ALL HES PERSONNEL
Event	25	Rig-Down Equipment	4/6/2015	07:32:09	USER					
Event	26	Pre-Convoy Safety Meeting	4/6/2015	07:32:16	USER					WITH ALL HES PERSONNEL
Event	27	Crew Leave	4/6/2015	07:32:22	USER					

Location						
Event	28	Comment	4/6/2015	07:32:27	USER	THANK YOU FOR USING HALLIBURTON CEMENT DEPARTMENT. JESSE SLAUGHTER AND CREW.

WPX ENERGY - YOUNBERG RU 433-7 - SURFACE



① Call Out n/a;n/a;n/a;n/a	⑧ Rig-Up Equipment n/a;n/a;n/a;n/a	⑮ Pump Lead Cement 8.33;4.1;121;0	22 Check Floats 8.33;0;206;101.4
② Pre-Convoy Safety Meeting n/a;n/a;n/a;n/a	⑨ Pre-Job Safety Meeting 8.36;0.1;1;1.9	⑯ Pump Tail Cement 12.75;8.1;361;0.1	23 End Job 8.32;0;1;101.4
③ Crew Leave Yard n/a;n/a;n/a;n/a	⑩ Start Job 8.34;0.1;2;2.6	⑰ Shutdown 13.05;0;147;64.9	24 Pre-Rig Down Safety Meeting 8.33;2.6;120;4.5
④ Arrive At Loc n/a;n/a;n/a;n/a	⑪ Prime Pumps 6.53;0.9;-1;0.1	⑱ Drop Top Plug 12.95;0;8;64.9	25 Rig-Down Equipment 8.32;10.5;226;8.7
⑤ Assessment Of Location Safety Meeting n/a;n/a;n/a;n/a	⑫ Test Lines 8.31;0;984;2.4	⑲ Pump Displacement 12.44;1.6;21;0	26 Pre-Convoy Safety Meeting 8.33;10.4;245;9.9
⑥ Spot Equipment n/a;n/a;n/a;n/a	⑬ Pump H2O Spacer 8.34;0.5;12;2.5	20 Slow Rate 8.33;9;601;92.7	27 Crew Leave Location 8.32;2.4;161;10.4
⑦ Pre-Rig Up Safety Meeting n/a;n/a;n/a;n/a	⑭ Check weight 8.34;1.6;44;7.2	21 Bump Plug 8.32;2;319;101.2	28 Comment 8.32;10.5;176;11.1

▼ **HALLIBURTON** | iCem® Service

Created: 2015-04-06 02:12:41, Version: 4.1.107

Edit

Customer: WPX ENERGY ROCKY MOUNTAIN LLC-EBUS

Job Date: 4/6/2015 4:46:50 AM

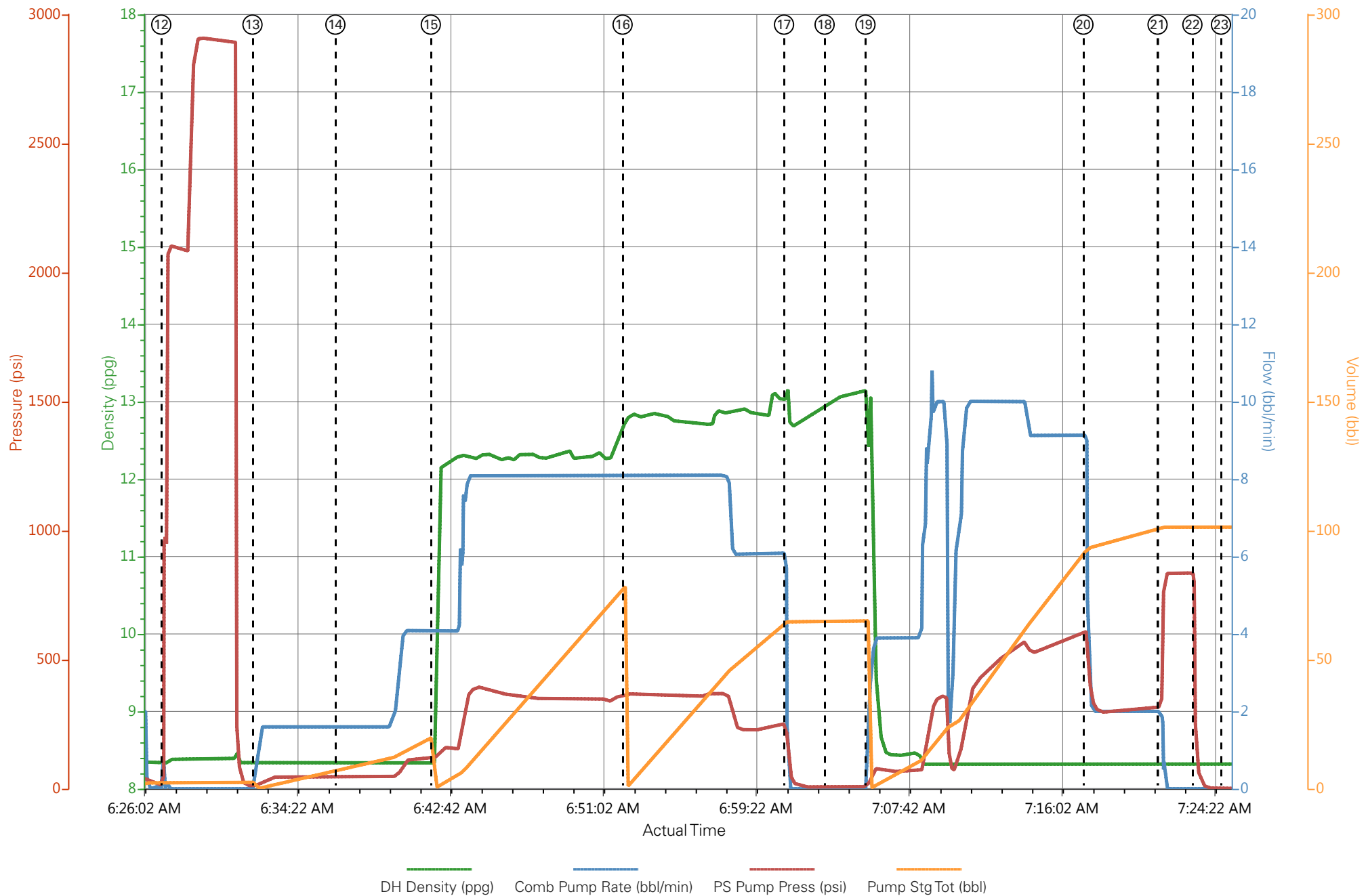
Well: YOUNBERG RU 433-7

Representative: AL HARTL

Sales Order #: 902299229

Elite #1: JESSE SLAUGHTER / DILLON MARTIN

WPX ENERGY - YOUBERG RU 433-7 - SURFACE



HALLIBURTON

Water Analysis Report

Company: WILLIAMS PRODUCTION

Submitted by: JESSE SLAUGHTER

Attention: LAB

Lease YOUBERG RU

Well # 433-7

Date: 4/6/2015

Date Rec.:

S.O.# 902299229

Job Type: SURFACE

Specific Gravity	<i>MAX</i>	1
pH	<i>8</i>	6
Potassium (K)	<i>5000</i>	250 Mg / L
Calcium (Ca)	<i>500</i>	120 Mg / L
Iron (FE2)	<i>300</i>	0 Mg / L
Chlorides (Cl)	<i>3000</i>	0 Mg / L
Sulfates (SO ₄)	<i>1500</i>	UNDER 200 Mg / L
Chlorine (Cl ₂)		0 Mg / L
Temp	<i>40-80</i>	65 Deg
Total Dissolved Solids		200 Mg / L

Respectfully: JESSE SLAUGHTER

Title: CEMENTING SUPERVISOR

Location: Grand Junction, CO

NOTICE:

This report is limited to the described sample tested. Any person using or relying on this report agrees that Halliburton shall not be liable for any loss or damage whether due to act or omission resulting from such report or its