

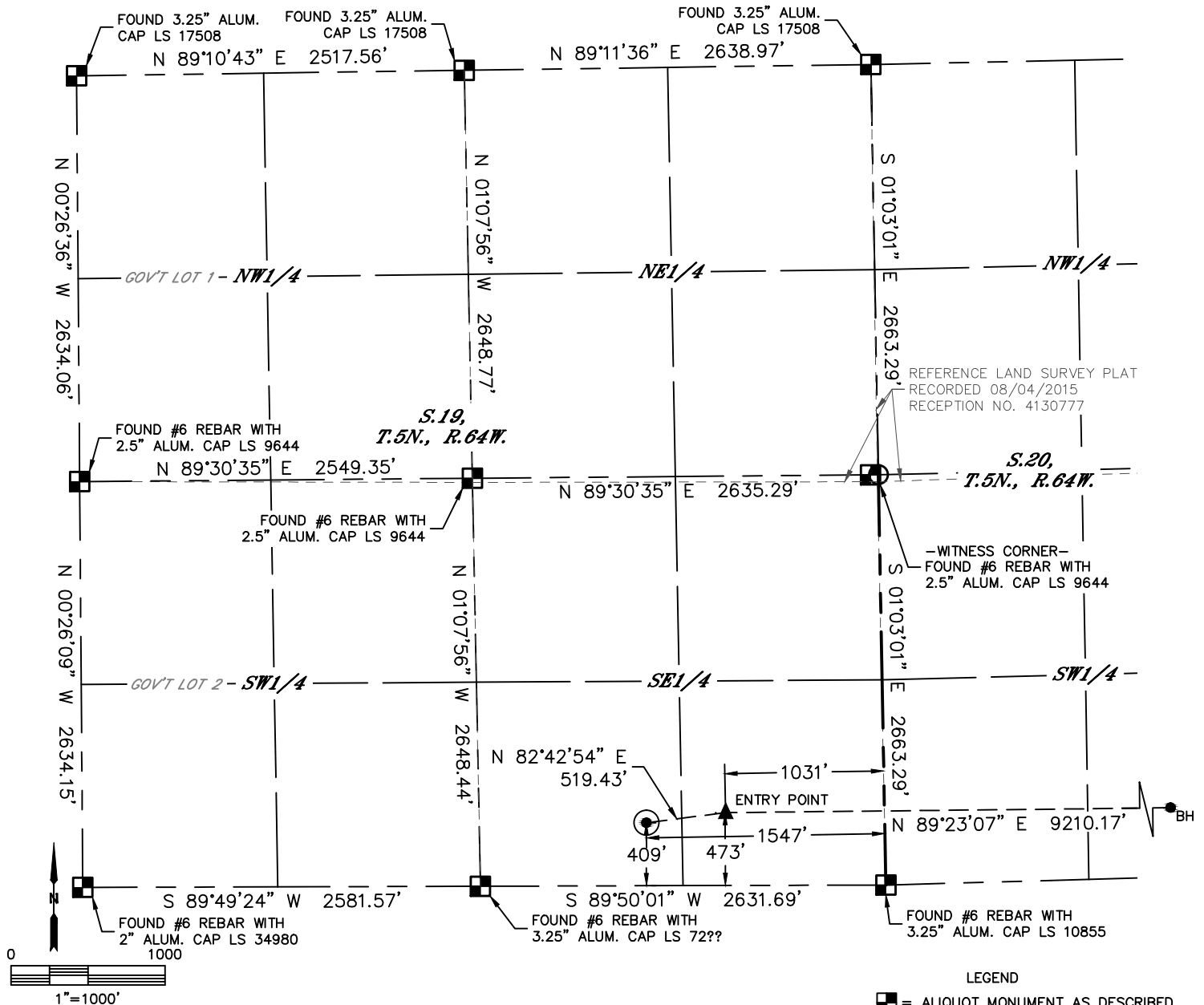


Lat40°, Inc. 6250 W. 10th Street, Unit 2 Greeley, CO 970-515-5294

WELL LOCATION CERTIFICATE

SCHNEIDER 19Q-312

SECTION: 19
TOWNSHIP: 5N
RANGE: 64W



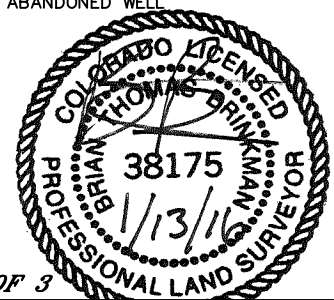
PDC ENERGY						LANDMAN: AL BRAGG			
INSTRUMENT OPERATOR: BRIAN ROTTINGHAUS						SURVEY DATE: 1-16-2014		SURFACE USE: RANGELAND	
SHL FOOTAGE				SHL LAT°	SHL LONG °	SHL PDOP	SHL ELEV	SHL 1/4/1/4	SHL S-T-R
409	FSL	1547	FEL	40.37844	-104.58879	2.8	4653	SWSE	19-5-64

BHL FOOTAGE				BHL LAT °	BHL LONG °	BHL S-T-R	EP LAT °	EP LONG °	EP S-T-R
356	FSL	2396	FEL	40.37861	-104.55389	21-5-64	40.37860	-104.58694	19-5-64

NEAREST CULTURAL ITEMS	
BUILDING	±590' SW
BUILDING UNIT	±594' NW
HIGH OCCUPANCY BUILDING UNIT	5280' +
DESIGNATED OUTSIDE ACTIVITY AREA	5280' +
PUBLIC ROAD (COUNTY ROAD 54)	±399' S
ABOVE GROUND UTILITY	±356' S
RAILROAD	±1077' NW
PROPERTY LINE	±409' S

NOTE:
1) Bearings shown are Grid Bearings of the Colorado State Plane Coordinate System, North Zone, North American Datum 1983. The lineal dimensions as contained herein are based upon the "U.S. Survey Foot."
2) Distances to section lines measured at 90 degrees from said section lines.
3) Ground elevations are based on an observed GPS elevation (NAVD 1988 DATUM).
4) Latitude and Longitude shown are (NAD 83 DATUM).
5) IMPROVEMENTS: See LOCATION DRAWING for all visible improvements within 500' of oil and gas location.
6) This map does not represent a boundary survey.

- LEGEND
- = ALIQUOT MONUMENT AS DESCRIBED
 - = CALCULATED POSITION
 - = SURFACE HOLE LOCATION (SHL)
 - ▲ = ENTRY POINT LOCATION (EP)
 - BH = BOTTOM HOLE LOCATION (BHL)
 - ⊙ = EXISTING WELL
 - ⊙ = ABANDONED WELL



SHEET 1 OF 3

Brian T. Brinkman—On behalf of Lat40°, Inc.
Colorado Licensed Professional Land Surveyor No. 38175
DATE: 1/13/2016
PROJECT#: 2013130

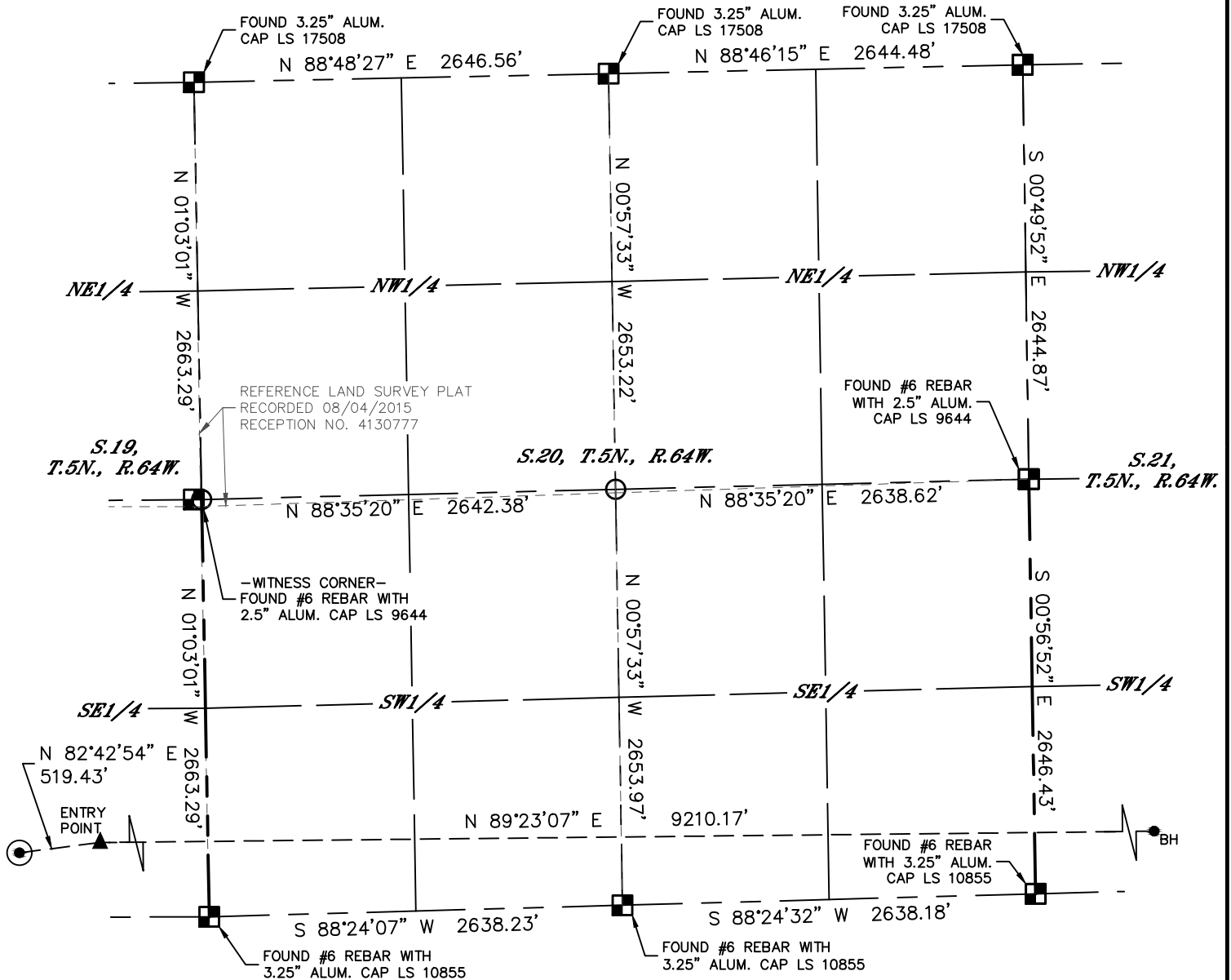


Lat40°, Inc. 6250 W. 10th Street, Unit 2 Greeley, CO 970-515-5294

WELL LOCATION CERTIFICATE

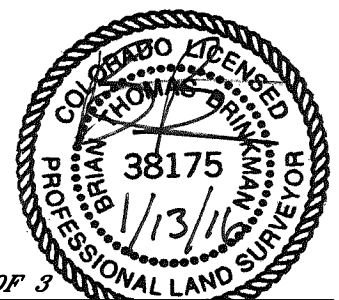
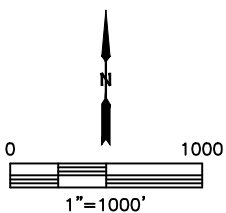
SCHNEIDER 19Q-312

SECTION: 19
TOWNSHIP: 5N
RANGE: 64W



LEGEND

- = ALIQUOT MONUMENT AS DESCRIBED
- = CALCULATED POSITION
- ⊙ = SURFACE HOLE LOCATION (SHL)
- ▲ = ENTRY POINT LOCATION (EP)
- = BOTTOM HOLE LOCATION (BHL)
- ⊕ = EXISTING WELL
- ⊖ = ABANDONED WELL



SHEET 2 OF 3

Brian T. Brinkman—On behalf of Lat40°, Inc.
Colorado Licensed Professional Land Surveyor No. 38175
DATE: 1/13/2016
PROJECT#: 2013130

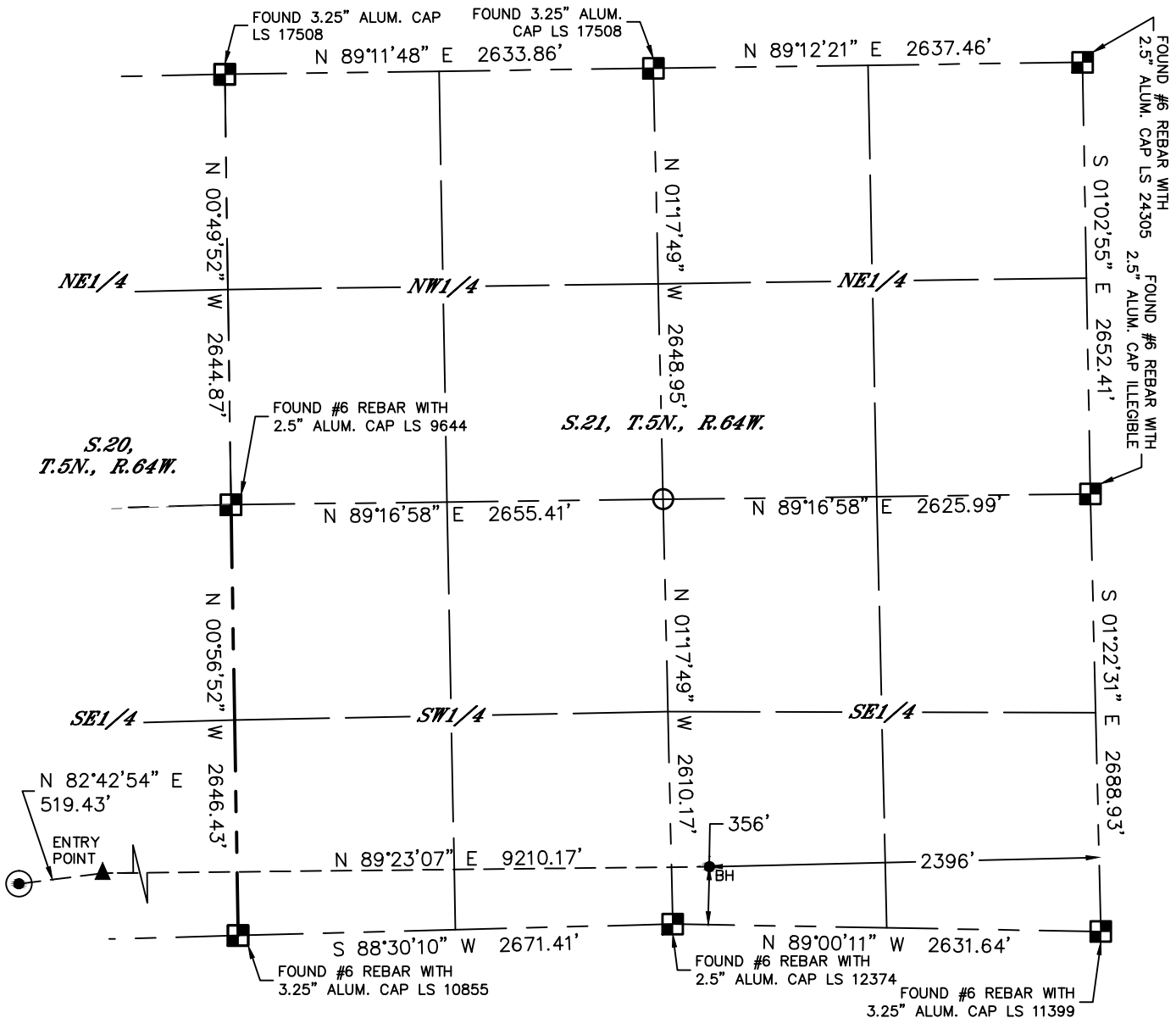


Lat40°, Inc. 6250 W. 10th Street, Unit 2 Greeley, CO 970-515-5294

WELL LOCATION CERTIFICATE

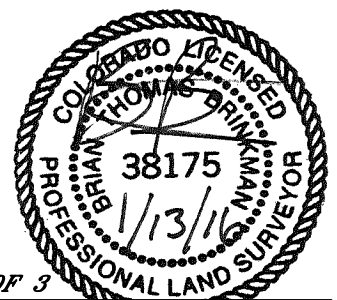
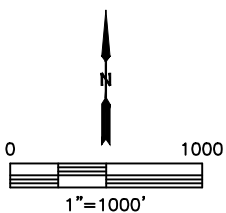
SCHNEIDER 19Q-312

SECTION: 19
TOWNSHIP: 5N
RANGE: 64W



LEGEND

- = ALIQUOT MONUMENT AS DESCRIBED
- = CALCULATED POSITION
- = SURFACE HOLE LOCATION (SHL)
- ▲ = ENTRY POINT LOCATION (EP)
- _{BH} = BOTTOM HOLE LOCATION (BHL)
- ⊙ = EXISTING WELL
- ⊙ = ABANDONED WELL



SHEET 3 OF 3

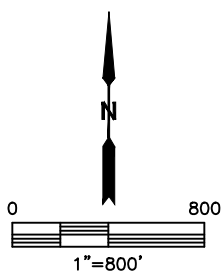
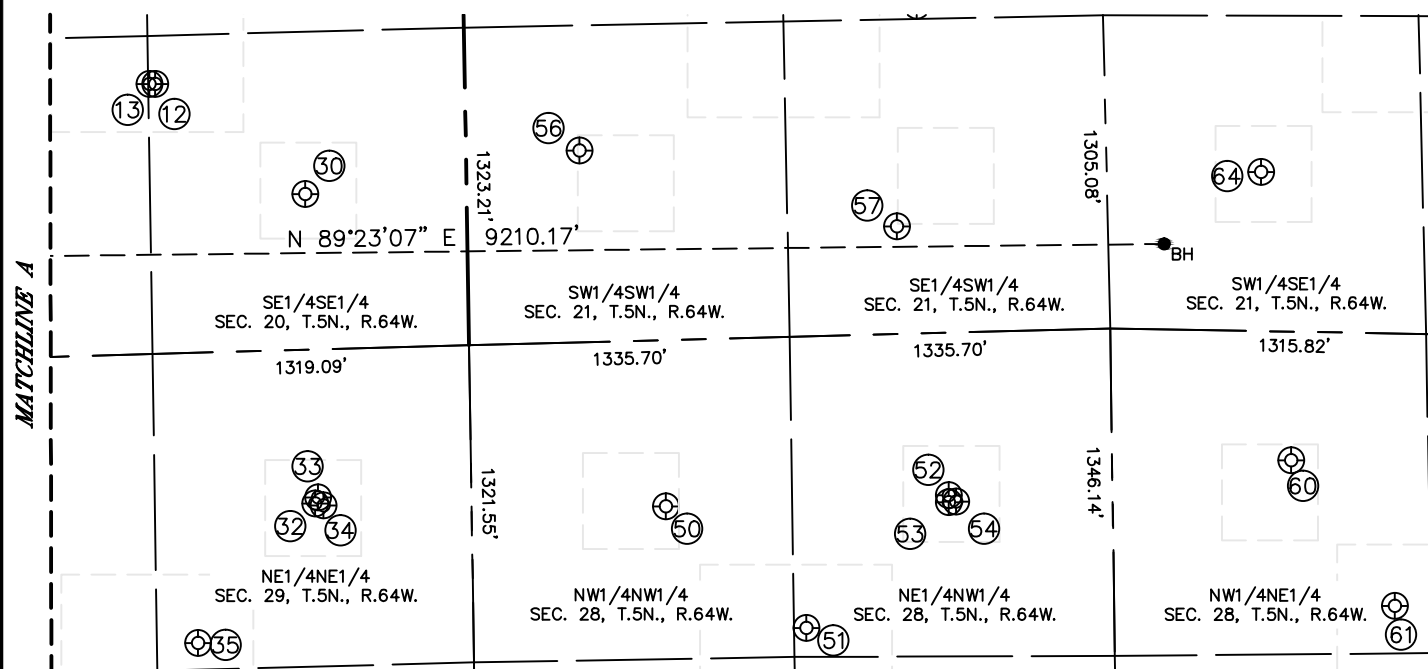
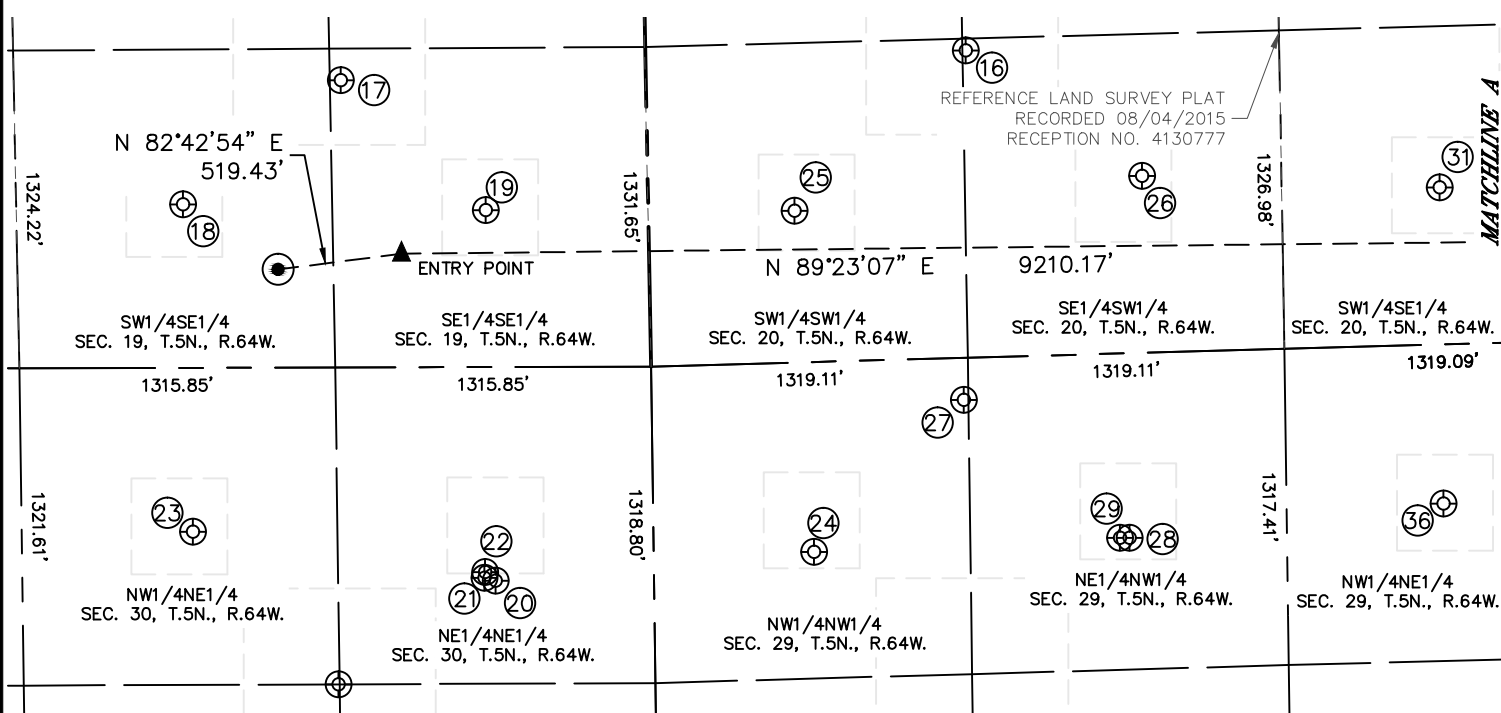
Brian T. Brinkman—On behalf of Lat40°, Inc.
Colorado Licensed Professional Land Surveyor No. 38175
DATE: 1/13/2016
PROJECT#: 2013130

Lat40°, Inc. 6250 W. 10th Street, Unit 2 Greeley, CO 970-515-5294

SITE SKETCH

SCHNEIDER 19Q-312

SECTION: 19
TOWNSHIP: 5N
RANGE: 64W



SHEET 1 OF 2

DATE: 1/13/2016
PROJECT#: 2013130



Lat40°, Inc. 6250 W. 10th Street, Unit 2 Greeley, CO 970-515-5294

SITE SKETCH

SCHNEIDER 19Q-312

SECTION: 19
TOWNSHIP: 5N
RANGE: 64W

12	DANLEY 43-20	1125	FSL	1290	FEL	40.38056	-104.56894	1.7	4659	SESE
13	DANLEY 33-20	1125	FSL	1313	FEL	40.38056	-104.56903	1.7	4659	SESE
16	EVERT 5	1280	FSL	1334	FWL	40.38086	-104.57847	1.8	4638	SESW
17	MOWERY 5	1196	FSL	1271	FEL	40.38059	-104.58782	1.6	4626	SESE
18	PHIL WILSON 19-1	681	FSL	1937	FEL	40.37919	-104.59019	2.3	4641	SWSE
19	MOWERY 19-2	653	FSL	677	FEL	40.37909	-104.58567	1.9	4653	SESE
20	MENONI B 30-1	890	FNL	661	FEL	40.37486	-104.58558	1.8	4684	NENE
21	CONAGRA B 30-27	878	FNL	707	FEL	40.37489	-104.58575	1.8	4684	NENE
22	CONAGRA B 29-30	854	FNL	704	FEL	40.37496	-104.58574	1.8	4684	NENE
23	MENONI B30-2	683	FNL	1918	FEL	40.37545	-104.59010	1.8	4679	NWNE
24	GEMINI B 29-4	791	FNL	667	FWL	40.37515	-104.58082	1.5	4678	NWNW
25	IVAN KLEIN 20-2	632	FSL	609	FWL	40.37905	-104.58106	2.0	4662	SWSW
26	EVERT 20-2	736	FSL	2059	FWL	40.37940	-104.57586	2.0	4659	SESW
27	YBARRA B 29-29	176	FNL	1300	FWL	40.37687	-104.57856	2.0	4686	NWNW
28	YBARRA B 29-18	769	FNL	1982	FWL	40.37527	-104.57610	2.0	4694	NENW
29	GEMINI B 29-3	768	FNL	1942	FWL	40.37527	-104.57624	2.0	4693	NENW
30	GILBERT DANLEY 20-1	648	FSL	672	FEL	40.37928	-104.56672	1.9	4655	SESE
31	HOFF 20-1	654	FSL	1981	FEL	40.37924	-104.57141	2.1	4673	SWSE
32	OTTENHOFF 41-29	642	FNL	652	FEL	40.37574	-104.56662	2.0	4659	NENE
33	OTTENHOFF 41-6B	616	FNL	639	FEL	40.37582	-104.56657	1.8	4658	NENE
34	OTTENHOFF 41-7B	651	FNL	618	FEL	40.37572	-104.56650	1.9	4658	NENE
35	CARLSON 5	1209	FNL	1148	FEL	40.37417	-104.56839	1.8	4670	NENE
36	OTTENHOFF 29-1	663	FNL	1985	FEL	40.37562	-104.57140	1.8	4680	NWNE
50	CHURCHILL 28A-1	693	FNL	809	FWL	40.37567	-104.56138	2.0	4651	NWNW
51	CHURCHILL 5	1215	FNL	1387	FWL	40.37426	-104.55929	1.9	4639	NENW
52	CHURCHILL 2-6B	676	FNL	1989	FWL	40.37577	-104.55715	1.9	4629	NENW
53	CHURCHILL 28-2	706	FNL	1988	FWL	40.37569	-104.55715	2.3	4629	NENW
54	CHURCHILL 2-7I	704	FNL	2018	FWL	40.37569	-104.55704	1.9	4629	NENW
56	ELDER 13-21	800	FSL	472	FWL	40.37975	-104.56261	2.2	4644	SWSW
57	ELDER 14-21	449	FSL	1791	FWL	40.37885	-104.55788	2.0	4633	SESW
60	HALL 28-4	536	FNL	1888	FEL	40.37612	-104.55202	1.8	4620	NWNE
61	HALL 28-5	1336	FNL	1471	FEL	40.37444	-104.55050	1.7	4620	NWNE
64	CHESNUT 3	662	FSL	1985	FEL	40.37942	-104.55243	1.9	4629	SWSE

SHEET 2 OF 2

DATE: 1/13/2016
PROJECT#: 2013130