

WPX Energy Rocky Mountain LLC - EBUS

RU 44-7

Nabors 576

Post Job Summary

Cement Surface Casing

Date Prepared: 3/30/2015
Job Date: 3/13/2015

Submitted by: Patrick Ealey – Grand Junction Cement Engineer

The Road to Excellence Starts with Safety

Sold To #: 300721	Ship To #: 3599983	Quote #:	Sales Order #: 0902225698
Customer: WPX ENERGY ROCKY MOUNTAIN LLC-EBUS		Customer Rep: Dmitry Melnikov	
Well Name: YOUNBERG RU		Well #: 44-7	API/UWI #: 05-045-22522-00
Field: RULISON	City (SAP): RIFLE	County/Parish: GARFIELD	State: COLORADO
Legal Description: SE SE-7-7S-93W-1148FSL-1182FEL			
Contractor: NABORS DRLG		Rig/Platform Name/Num: NABORS 576	
Job BOM: 7521			
Well Type: DIRECTIONAL GAS			
Sales Person: HALAMERICA\HB50180		Srvc Supervisor: Cliff Sparks	

Job

CIRCULATED 20 BBLS OF CEMENT TO SURFACE

Formation Name										
Formation Depth (MD)	Top			Bottom						
Form Type	BHST									
Job depth MD	1355ft			Job Depth TVD	1375					
Water Depth				Wk Ht Above Floor	3					
Perforation Depth (MD)	From			To						

Well Data

Description	New / Used	Size in	ID in	Weight lbm/ft	Thread	Grade	Top MD ft	Bottom MD ft	Top TVD ft	Bottom TVD ft
Casing	3	9.625	9.001	32.3	8 RD (LT&C)	H-40	0	1355		0
Open Hole Section			13.5				0	1375		0

Tools and Accessories

Type	Size in	Qty	Make	Depth ft		Type	Size in	Qty	Make
Guide Shoe	9.625	1		1355		Top Plug	9.625	1	HES
Float Shoe						Bottom Plug			
Float Collar	9.625	1		1309.8		SSR plug set			
Insert Float						Plug Container	9.625	1	HES
Stage Tool						Centralizers			

Miscellaneous Materials

Gelling Agt		Conc		Surfactant		Conc		Acid Type		Qty		Conc	
Treatment Fld		Conc		Inhibitor		Conc		Sand Type		Size		Qty	

Fluid Data

Stage/Plug #: 1

Fluid #	Stage Type	Fluid Name	Qty	Qty UoM	Mixing Density lbm/gal	Yield ft3/sack	Mix Fluid Gal	Rate bbl/min	Total Mix Fluid Gal
1	Fresh Water	Fresh Water	20	bbl	8.34			4	

Fluid #	Stage Type	Fluid Name	Qty	Qty UoM	Mixing Density lbm/gal	Yield ft3/sack	Mix Fluid Gal	Rate bbl/min	Total Mix Fluid Gal
2	VariCem GJ1	VARICEM (TM) CEMENT	175	sack	12.3	2.38		8	13.77
13.70 Gal			FRESH WATER						

0.25 lbm		POLY-E-FLAKE (101216940)							
Fluid #	Stage Type	Fluid Name	Qty	Qty UoM	Mixing Density lbm/gal	Yield ft3/sack	Mix Fluid Gal	Rate bbl/min	Total Mix Fluid Gal
3	VariCem GJ1	VARICEM (TM) CEMENT	175	sack	12.8	2.11		8	11.77
0.25 lbm		POLY-E-FLAKE (101216940)							
11.71 Gal		FRESH WATER							
Fluid #	Stage Type	Fluid Name	Qty	Qty UoM	Mixing Density lbm/gal	Yield ft3/sack	Mix Fluid Gal	Rate bbl/min	Total Mix Fluid Gal
4	Fresh Water Displacement	Fresh Water Displacement	103.1	bbl	8.34			10	
Cement Left In Pipe	Amount	45 ft			Reason			Shoe Joint	
Mix Water:	pH ##	Mix Water Chloride: ## ppm			Mix Water Temperature: ## °F °C				
Cement Temperature:	## °F °C	Plug Displaced by: ## lb/gal kg/m3 XXXX			Disp. Temperature: ## °F °C				
Plug Bumped?	Yes/No	Bump Pressure: ##### psi MPa			Floats Held?			Yes/No	
Cement Returns:	## bbl m3	Returns Density: ## lb/gal kg/m3			Returns Temperature: ## °F °C				
Comment									

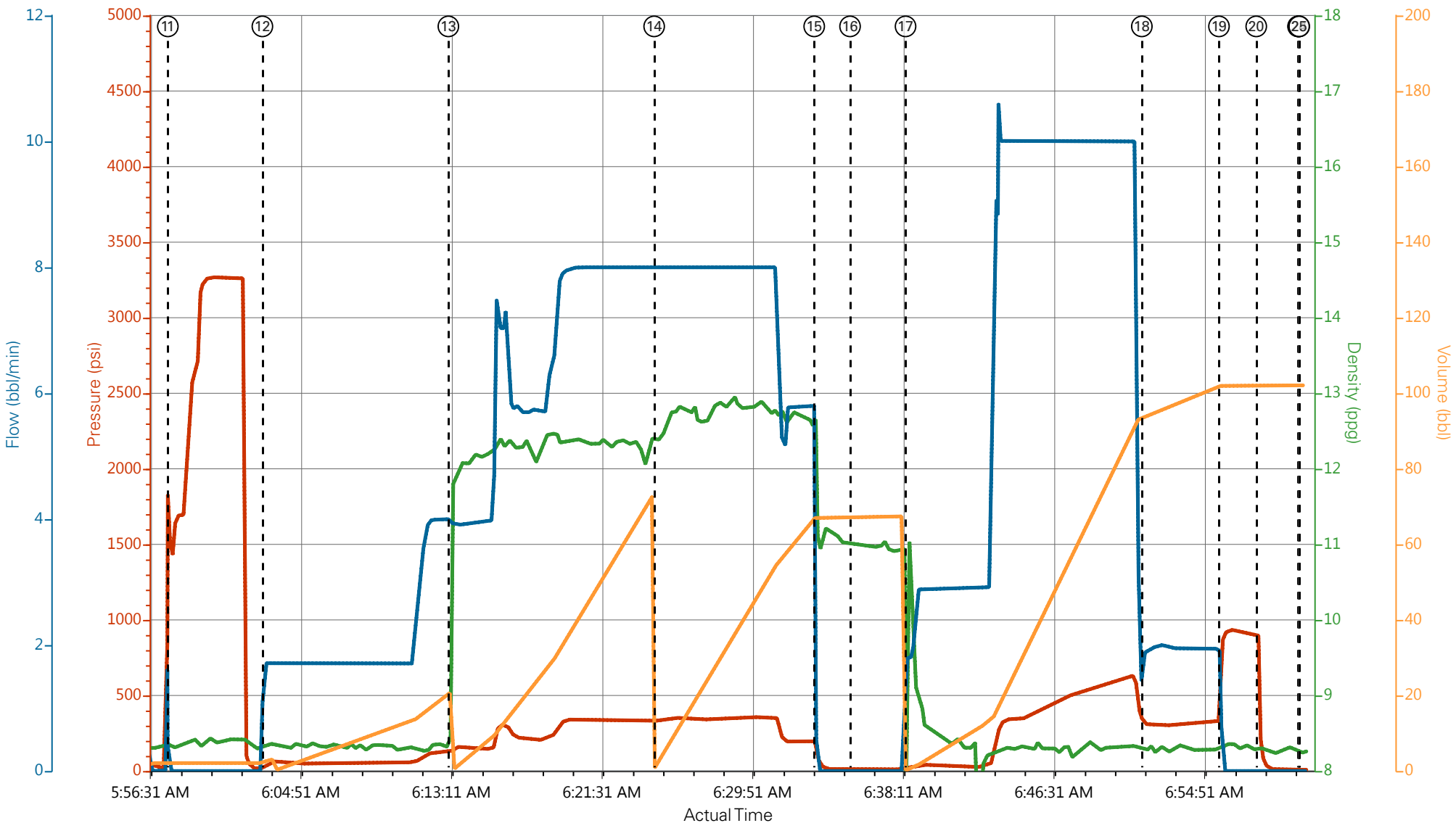
2.0 Real-Time Job Summary

2.1 Job Event Log

Type	Seq. No.	Activity	Date	Time	Source	DH Density (ppg)	Comb Pump Rate (bbl/min)	PS Pump Press (psi)	Pump Stg Tot (bbl)	Comments
Event	1	Call Out	3/12/2015	10:00:00	USER					Hole 13.5", Casing 9.625" 32.3#, Shoe 45.1', TD 1375' TP 1354.9', Mud wieght 10.1ppg
Event	2	Pre-Convoy Safety Meeting	3/12/2015	11:50:00	USER					
Event	3	Crew Leave Yard	3/13/2015	00:00:00	USER					1 PICKUP, 1 ELITE, 1 660 BULK TRUCK, 1 BODYLOAD
Event	4	Arrive At Loc	3/13/2015	02:00:00	USER					ARRIVED AN HOUR EARLY CASING CREW WAS STARTING TO RIG UP
Event	5	Assessment Of Location Safety Meeting	3/13/2015	02:15:00	USER					
Event	6	Pre-Rig Up Safety Meeting	3/13/2015	04:45:00	USER					
Event	7	Rig-Up Equipment	3/13/2015	05:00:00	USER					
Event	8	Pre-Job Safety Meeting	3/13/2015	05:30:00	USER					
Event	9	Start Job	3/13/2015	05:55:00	COM2					
Event	10	Prime Pumps	3/13/2015	05:55:18	USER	8.34	2	52	2	PUMPED 2 BBLS WATER
Event	11	Test Lines	3/13/2015	05:57:39	COM2	8.34	0.00	3268	0	GOOD PRESSURE TEST
Event	12	Pump Spacer 1	3/13/2015	06:02:53	COM2	8.34	4	128	20	20 BBLS WATER
Event	13	Pump Lead Cement	3/13/2015	06:13:10	COM2	12.3	8	340	74.2	175 SKS (74.2BBLS) 12.3PPG, 2.38 YIELD, 13.77 GAL/SK

Event	14	Pump Tail Cement	3/13/2015	06:24:33	COM2	12.8	8	360	2.2	175 SKS (65.8BBLS) 12.8PPG, 2.11 YIELD, 11.77 GAL/SK
Event	15	Shutdown	3/13/2015	06:33:25	USER					
Event	16	Drop Plug	3/13/2015	06:35:24	USER					PLUG WENT
Event	17	Pump Displacement	3/13/2015	06:38:28	COM2	8.34	10	630	103.1	103.1 BBLS FRESH WATER
Event	18	Slow Rate	3/13/2015	06:51:32	USER	8.34	2	315	93	2 BBLS/MIN
Event	19	Bump Plug	3/13/2015	06:55:48	COM2			929	103.1	500 PSI OVER
Event	20	Check Floats	3/13/2015	06:57:52	USER					FLOATS HELD
Event	21	End Job	3/13/2015	07:00:11	COM2					GOOD RETURNS THROUGHT JOB. 20 BBLS OF CEMENT TO SURFACE
Event	22	Pre-Rig Down Safety Meeting	3/13/2015	07:00:12	USER					
Event	23	Rig-Down Equipment	3/13/2015	07:00:13	USER					
Event	24	Pre-Convoy Safety Meeting	3/13/2015	07:00:14	USER					
Event	25	Crew Leave Location	3/13/2015	07:00:15	USER					THANK YOU FOR USING HALLIBURTON CEMENT. CLIFF SPARKS AND CREW

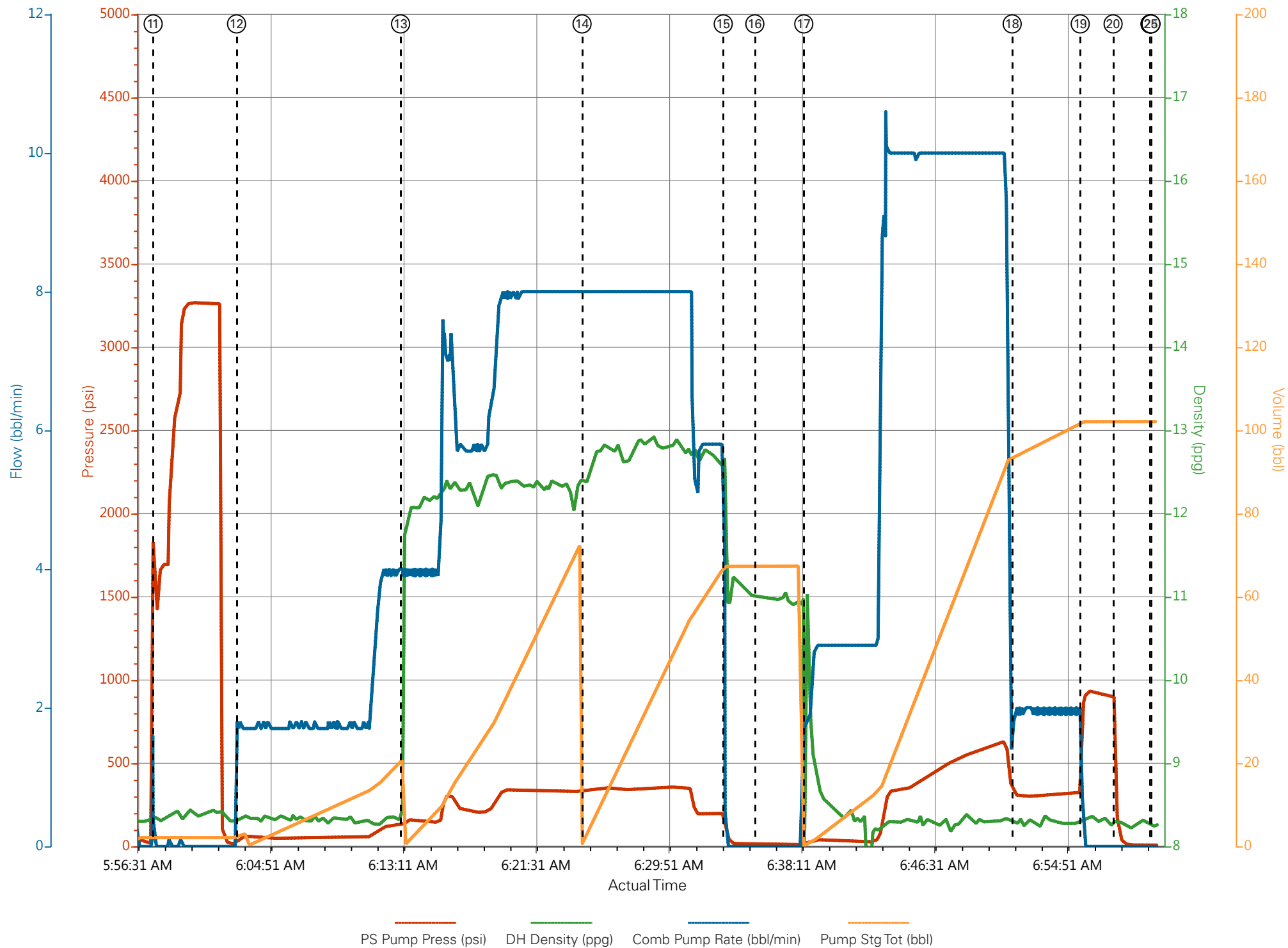
WPX RU 44-7 Surface



PS Pump Press (psi) DH Density (ppg) Comb Pump Rate (bbl/min) Pump Stg Tot (bbl)

- | | | | |
|---|--|--------------------------------------|--|
| ① Call Out n/a;n/a;n/a;n/a | ⑧ Pre-Job Safety Meeting 2;8.29;1.8;18.5 | ⑮ Shutdown 95;11.11;0;67.4 | 22 Pre-Rig Down Safety Meeting 8;8.2;0;102.1 |
| ② Pre-Convoy Safety Meeting n/a;n/a;n/a;n/a | ⑨ Start Job 1;8.29;0;0 | ⑯ Drop Plug 11;11.05;0;67.4 | 23 Rig-Down Equipment 8;8.21;0;102.1 |
| ③ Crew Leave Yard n/a;n/a;n/a;n/a | ⑩ Prime Pumps 15;8.16;1.8;0.2 | ⑰ Pump Displacement 26;11.04;1.8;0.5 | 24 Pre-Convoy Safety Meeting 8;8.22;0;102.1 |
| ④ Arrive At Loc n/a;n/a;n/a;n/a | ⑪ Test Lines 1430;8.3;0;2.1 | ⑱ Slow Rate 312;8.31;1.9;93.9 | 25 Crew Leave Location 8;8.22;0;102.1 |
| ⑤ Assessment Of Location Safety Meeting n/a;n/a;n/a;n/a | ⑫ Pump Spacer 1 34;8.33;1.7;2.5 | ⑲ Bump Plug 860;8.29;0;102.1 | |
| ⑥ Pre-Rig Up Safety Meeting n/a;n/a;n/a;n/a | ⑬ Pump Lead Cement 130;10.19;4;0 | 20 Check Floats 330;8.3;0;102.1 | |
| ⑦ Rig-Up Equipment n/a;n/a;n/a;n/a | ⑭ Pump Tail Cement 337;12.37;8;2.2 | 21 End Job 8;8.22;0;102.1 | |

WPX RU 44-7 Surface



HALLIBURTON

Water Analysis Report

Company: WPX
Submitted by: CLIFF SPARKS
Attention: DALLAS SCOTT
Lease: YOUBERG RU
Well #: 44-7

Date: 3/13/2015
Date Rec.: 3/13/2015
S.O.#: 902225698
Job Type: 9 5/8" SURFACE

Specific Gravity	<i>MAX</i>	1
pH	<i>8</i>	7
Potassium (K)	<i>5000</i>	400 Mg / L
Calcium (Ca)	<i>500</i>	120 Mg / L
Iron (FE2)	<i>300</i>	0 Mg / L
Chlorides (Cl)	<i>3000</i>	0 Mg / L
Sulfates (SO ₄)	<i>1500</i>	-200 Mg / L
Chlorine (Cl ₂)		0 Mg / L
Temp	<i>40-80</i>	55 Deg
Total Dissolved Solids		230 Mg / L

Respectfully: CLIFF SPARKS

Title: CEMENTING SUPERVISOR

Location: Grand Junction, CO

NOTICE:

This report is limited to the described sample tested. Any person using or relying on this report agrees that Halliburton shall not be liable for any loss or damage whether due to act or omission resulting from such report or its use.

Sales Order #: 0902225698	Line Item: 10	Survey Conducted Date: 3/13/2015
Customer: WPX ENERGY ROCKY MOUNTAIN LLC-EBUS		Job Type (BOM): CMT SURFACE CASING BOM
Customer Representative: AL HARTAL		API / UWI: (leave blank if unknown) 05-045-22522-00
Well Name: YOUBERG RU		Well Number: 0080688982
Well Type: DIRECTIONAL GAS	Well Country: USA	
H2S Present: No	Well State: COLORADO	Well County: GARFIELD

Dear Customer,

We hope that you were satisfied with the service quality of this job performed by Halliburton. It is the aim of our management and service personnel to deliver equipment and service of a standard unmatched in the service sector of the energy industry.

Please take the time to let us know if our performance met with your satisfaction. Please be as critical as possible to ensure we constantly improve our service. Your comments are of great value to us and are intended for the exclusive use of Halliburton.

CUSTOMER SATISFACTION SURVEY

CATEGORY	CUSTOMER SATISFACTION RESPONSE	
Survey Conducted Date	The date the survey was conducted	3/13/2015
Survey Interviewer	The survey interviewer is the person who initiated the survey.	HAL9235
Customer Participation	Did the customer participate in this survey? (Y/N)	Yes
Customer Representative	Enter the Customer representative name	AL HARTAL
HSE	Was our HSE performance satisfactory? Circle Y or N	Yes
Equipment	Were you satisfied with our Equipment? Circle Y or N	Yes
Personnel	Were you satisfied with our people? Circle Y or N	Yes
Customer Comment	Customer's Comment	GREAT JOB

CUSTOMER SIGNATURE

Sales Order #: 0902225698	Line Item: 10	Survey Conducted Date: 3/13/2015
Customer: WPX ENERGY ROCKY MOUNTAIN LLC-EBUS		Job Type (BOM): CMT SURFACE CASING BOM
Customer Representative: AL HARTAL		API / UWI: (leave blank if unknown) 05-045-22522-00
Well Name: YOUBERG RU		Well Number: 0080688982
Well Type: DIRECTIONAL GAS	Well Country: USA	
H2S Present: No	Well State: COLORADO	Well County: GARFIELD

KEY PERFORMANCE INDICATORS

General	
Survey Conducted Date The date the survey was conducted	3/13/2015

Cementing KPI Survey	
Type of Job Select the type of job. (Cementing or Non-Cementing)	0
Select the Maximum Deviation range for this Job What is the highest deviation for the job you just completed? This may not be the maximum well deviation.	Deviated
Total Operating Time (hours) Total Operating Hours Including Rig-up, Pumping, Rig-down. Enter in decimal format.	5
HSE Incident, Accident, Injury HSE Incident, Accident, Injury. This should be recordable incidents only.	No
Was the job purpose achieved? Was the job delivered correctly as per customer agreed design?	Yes
Pumping Hours Total number of hours pumping fluid on this job. Enter in decimal format.	1
Type of Rig Classification Job Was Performed Type Of Rig (classification) Job Was Performed On	Drilling Rig (Portable)
Number Of JSAs Performed Number Of Jsas Performed	5
Was this a Primary Cement Job (Yes / No) Primary Cement Job= Casing job, Liner job, or Tie-back job.	Yes
Number of Unplanned Shutdowns Unplanned shutdown is when injection stops for any period of time.	0
Customer Non-Productive Rig Time (hrs)	0

Sales Order #: 0902225698	Line Item: 10	Survey Conducted Date: 3/13/2015
Customer: WPX ENERGY ROCKY MOUNTAIN LLC-EBUS		Job Type (BOM): CMT SURFACE CASING BOM
Customer Representative: AL HARTAL		API / UWI: (leave blank if unknown) 05-045-22522-00
Well Name: YOUBERG RU		Well Number: 0080688982
Well Type: DIRECTIONAL GAS	Well Country: USA	
H2S Present: No	Well State: COLORADO	Well County: GARFIELD

Lost time due to Halliburton in the start, execution, or completion of an ordered service or product, or delays in a follow-on service. Enter in decimal format. 0 if none.	
Was the non productive time or the unplanned shutdown caused by a problem with a piece of equipment? Was the non productive time or the unplanned shutdown caused by a problem with a piece of equipment?	No
Did We Run Wiper Plugs? Did We Run Top And Bottom Casing Wiper Plugs?	Top
If a top plug was run, was the plug bumped? (Yes/No/N/A) If a top plug was run, was the plug bumped? (Yes/No/N/A)	Yes
If applicable, was Halliburton float equipment used? (Yes/No/N/A) If applicable, was Halliburton float equipment used? (Yes/No/N/A)	Yes
If applicable, did the floats hold? (Yes/No/N/A) If applicable, did the floats hold? (Yes/No/N/A)	Yes
Mixing Density of Job Stayed in Designed Density Range (0-100%) Density Range defined as +/- .20 ppg. Calculation: Total BBLs cement mixed at designed density divided by total BBLs of cement multiplied by 100	98
Pump Rate (percent) of Job Stayed At Designed Pump Rate Pump Rate range defined as +/- 1bbl/min. Calculation: Total BBLs of fluid pumped at the designed rate divided by Total BBLs of fluid pumped, multiplied by 100	98
If applicable, were there returns throughout the job? (Yes/No/N/A) If applicable, were there returns throughout the job? (Yes/No/N/A)	Yes
Nbr of Remedial Plug Jobs Rqd - HES Number Of Remedial Plug Jobs Needed After Primary Plug Pumped By HES	0
Nbr of Remedial Sqz Jobs Rqd - HES Number Of Remedial Squeeze Jobs Required After Primary Job Performed By HES	0