

WPX Energy Rocky Mountain LLC- EBUS

RU 44-7

Nabors 576

Post Job Summary

Cement Production Casing

Date Prepared: 03/31/2015
Job Date: 03/25/2015

Submitted by: Evan Russell – Grand Junction Cement Engineer

The Road to Excellence Starts with Safety

Sold To #: 300721	Ship To #: 3599983	Quote #:	Sales Order #: 0902232614
Customer: WPX ENERGY ROCKY MOUNTAIN LLC-EBUS		Customer Rep: Dmitry Melnikoc	
Well Name: YOUNBERG RU	Well #: 44-7	API/UWI #: 05-045-22522-00	
Field: RULISON	City (SAP): RIFLE	County/Parish: GARFIELD	State: COLORADO
Legal Description: SE SE-7-7S-93W-1148FSL-1182FEL			
Contractor: NABORS DRLG		Rig/Platform Name/Num: NABORS 576	
Job BOM: 7523			
Well Type: DIRECTIONAL GAS			
Sales Person: HALAMERICA\HB50180		Srvc Supervisor: Carlton Kukus	

Job

Formation Name	
Formation Depth (MD)	Top
Form Type	BHST
Job depth MD	9583ft
Water Depth	Wk Ht Above Floor 5ft
Perforation Depth (MD)	From To

Well Data

Description	New / Used	Size in	ID in	Weight lbm/ft	Thread	Grade	Top MD ft	Bottom MD ft	Top TVD ft	Bottom TVD ft
Casing		9.625	9.001	32.3			0	1355	0	1355
Casing	3	4.5	4	11.6	8 RD	P-110	0	9583	0	9583
Open Hole Section			8.75				1355	9590	1355	9590

Tools and Accessories

Type	Size in	Qty	Make	Depth ft	Type	Size in	Qty	Make
Guide Shoe	4.5	1		9583	Top Plug	4.5	1	HES
Float Shoe	4.5				Bottom Plug	4.5		HES
Float Collar	4.5	1		9553.28	SSR plug set	4.5		HES
Insert Float	4.5				Plug Container	4.5	1	HES
Stage Tool	4.5				Centralizers	4.5		HES

Miscellaneous Materials

Gelling Agt	Conc	Surfactant	Conc	Acid Type	Qty	Conc
Treatment Fld	Conc	Inhibitor	Conc	Sand Type	Size	Qty

Fluid Data

Stage/Plug #: 1									
Fluid #	Stage Type	Fluid Name	Qty	Qty UoM	Mixing Density lbm/gal	Yield ft3/sack	Mix Fluid Gal	Rate bbl/min	Total Mix Fluid Gal
1	Mud Flush III (Powder)	Mud Flush III	40	bbl	8.35			4	
42 gal/bbl		FRESH WATER							

Fluid #	Stage Type	Fluid Name	Qty	Qty UoM	Mixing Density lbm/gal	Yield ft3/sack	Mix Fluid Gal	Rate bbl/mi n	Total Mix Fluid Gal
2	EconoCem GJ2	ECONOCHEM (TM) SYSTEM	270	sack	12.7	1.66	8.53	8	
8.53 Gal		FRESH WATER							
Fluid #	Stage Type	Fluid Name	Qty	Qty UoM	Mixing Density lbm/gal	Yield ft3/sack	Mix Fluid Gal	Rate bbl/mi n	Total Mix Fluid Gal
3	ThermaCem GJ2	THERMACEM (TM) SYSTEM	790	sack	13.5	1.75	7.63	8	
8 lbm		KOL-SEAL, BULK (100064233)							
7.63 Gal		FRESH WATER							
0.30 %		HR-601, 50 LB BAG (101328348)							
Fluid #	Stage Type	Fluid Name	Qty	Qty UoM	Mixing Density lbm/gal	Yield ft3/sack	Mix Fluid Gal	Rate bbl/mi n	Total Mix Fluid Gal
4	Fresh Water Displacement	Fresh Water Displacement	148.1	bbl	8.34			10	
Cement Left In Pipe		Amount	29 ft		Reason		Shoe Joint		
Comment THERE WERE NO RETURNS THROUGHOUT CEMENT JOB									

1.0 Real-Time Job Summary

1.1 Job Event Log

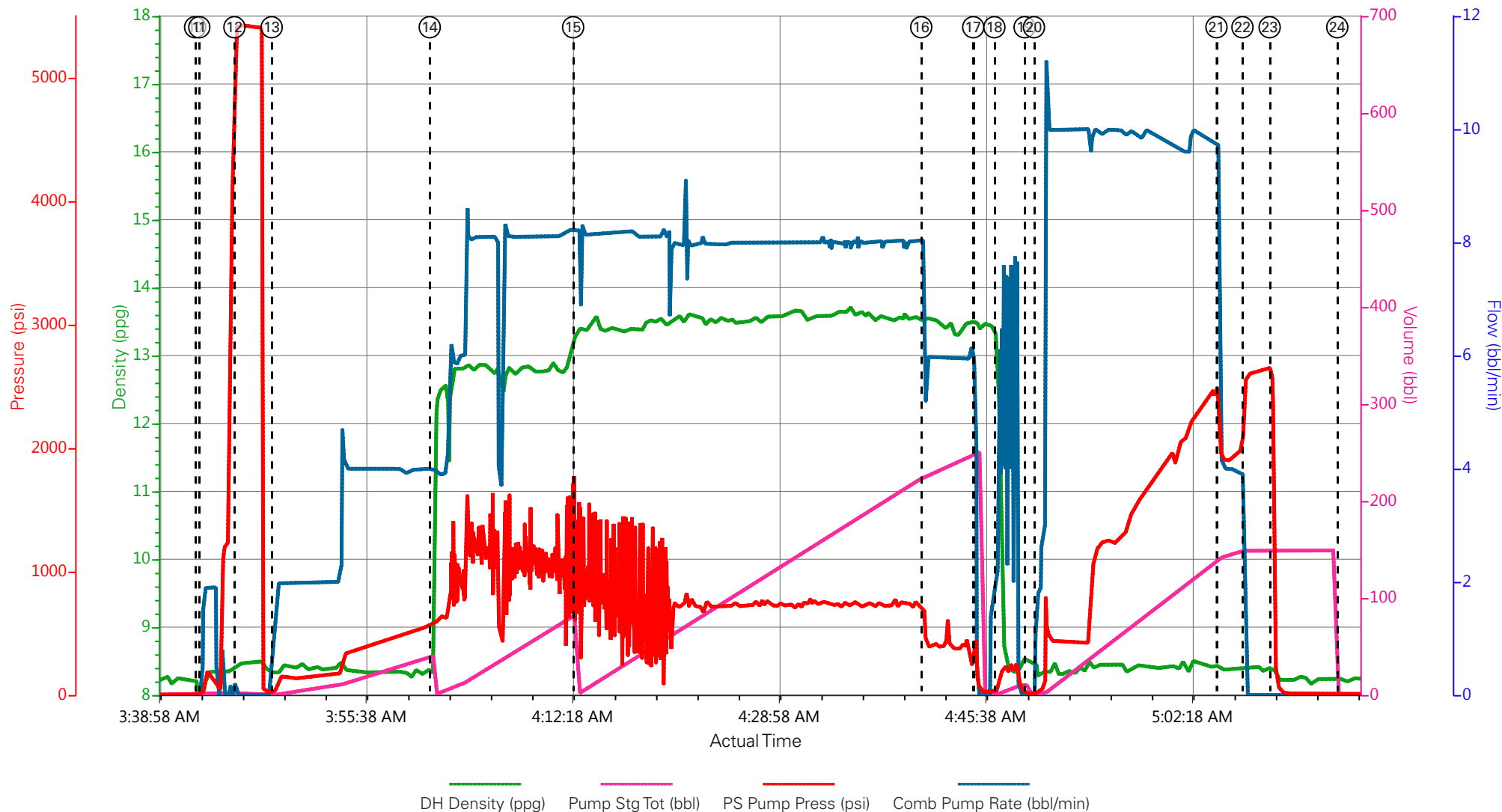
Type	Seq. No.	Activity	Date	Time	Source	DH Density (ppg)	PS Pump Press (psi)	Pump Stg Tot (bbl)	Comb Pump Rate (bbl/min)	Comments
Event	1	Call Out	3/24/2015	17:00:00	USER					ALL HES
Event	2	Pre-Convoy Safety Meeting	3/24/2015	19:00:00	USER					JOURNEY CREATED, ALL HES INVOLVED IN PRE-CONVOY SAFETY MEETING
Event	3	Crew Leave Yard	3/24/2015	19:15:00	USER					1-F-550 PICKUP, 1-ELITE PUMP TRUCK, 1-660 BULK TRUCK, 1-WASH UP TRUCK
Event	4	Arrive At Loc	3/24/2015	21:30:00	USER					HES ARRIVED 1.5 HOURS EARLY
Event	5	Assessment Of Location Safety Meeting	3/24/2015	21:45:00	USER					RIG WAS RUNNING CASING, HES WAITED TO SPOT EQUIPMENT AND RIG UP DUE TO CASING IN THE WAY
Event	6	Pre-Rig Up Safety Meeting	3/25/2015	00:45:00	USER					JSA FILLED OUT AND REVIEWED BY ALL HES
Event	7	Rig-Up Equipment	3/25/2015	01:00:00	USER					RIG UP IRON TO THE STAND PIPE AND TO WASH UP TRUCK, WATER HOSES TO UPRIGHT AND DAY TANK, BULK EQUIPMENT TO PUMP TRUCK
Event	8	Rig-Up Completed	3/25/2015	02:00:00	USER					COMPLETED
Event	9	Pre-Job Safety Meeting	3/25/2015	03:00:00	USER					ALL HES AND RIG CREW TO DISCUSS JOB PROCEDURES
Event	10	Start Job	3/25/2015	03:42:04	COM5					TD: 9590FT TP: 9582.84FT SJ: 29.36FT OH: 8.75 CSG: 4.5 11.6# P-110 SRF CSG: 1355FT 9.625 32.3# MUD

WT: 11# VISC: 65 THERE
ARE NO RETURNS, HES IS
PUMPING CEMENT JOB PER
COMPANY REPS REQUEST

Event	11	Prime Pumps	3/25/2015	03:42:25	USER	8.34	212	2	2	FILL LINES TO PRESSURE TEST
Event	12	Test Lines	3/25/2015	03:45:15	COM5	8.44	5421.00			PRESSURE TEST LINES TO 5000 PSI, PRESSURE TEST OK
Event	13	Pump Spacer 1	3/25/2015	03:48:15	COM5	8.34	570	40	4	40 BBL MUD FLUSH SPACER
Event	14	Pump Lead Cement	3/25/2015	04:01:00	COM5	12.7	1270	79.8	8	270 SKS (79.8BBL) OF ECONOCEM CEMENT 12.7PPG 1.66YIELD 8.53GAL/SK WEIGHT OF CEMENT VERIFIED VIA MUD SCALES THROUGHOUT LEAD CEMENT
Event	15	Pump Tail Cement	3/25/2015	04:12:34	COM5	13.5	800	220	8	790 SKS (246.2BBL) OF THERMACEM CEMENT 13.5PPG 1.75YIELD 7.63GAL/SK WEIGHT OF CEMENT VERIFIED VIA MUD SCALES THROUGHOUT TAIL CEMENT
Event	16	Slow Rate	3/25/2015	04:40:39	USER	13.53	580	24.6	6	SLOW RATE TO END ON CEMENT
Event	17	Shutdown	3/25/2015	04:44:51	USER	13.50	177.00	246.2		SHUTDOWN END OF CEMENT
Event	18	Clean Lines	3/25/2015	04:46:34	COM5					CLEAN LINES TO WASH UP TRUCK
Event	19	Drop Top Plug	3/25/2015	04:49:00	COM5					PLUG AWAY NO PROBLEMS
Event	20	Pump Displacement	3/25/2015	04:49:45	COM5	8.34	2430	138.1	10	FRESH WATER DISPLACEMENT WITH 3 POUNDS OF BE-6 AND KCL

Event	21	Slow Rate	3/25/2015	05:04:29	USER	8.34	1900	10	4	SLOW RATE TO BUMP THE PLUG
Event	22	Bump Plug	3/25/2015	05:06:34	COM5	8.34	2000	148.1	4	BUMPED PLUG AT 2000 PSI, TOOK TO 2650 PSI
Event	23	Check Floats	3/25/2015	05:08:46	USER		2160.00			FLOATS HELD 2 BBLS BACK TO TANKS
Event	24	End Job	3/25/2015	05:14:13	COM5					THANK YOU FOR CHOOSING HALLIBURTON CEMENT CARL KUKUS AND CREW
Event	25	Pre-Rig Down Safety Meeting	3/25/2015	05:30:00	USER					ALL HES
Event	26	Rig-Down Equipment	3/25/2015	05:40:00	USER					WASH UP AND BLOW DOWN PUMP, RIG DOWN ALL LINES AND RACK UP
Event	27	Rig-Down Completed	3/25/2015	06:40:00	USER					COMPLETED
Event	28	Pre-Convoy Safety Meeting	3/25/2015	07:00:00	USER					JOURNEY CREATED ALL HES INVOLVED IN SAFETY MEETING
Event	29	Crew Leave Location	3/25/2015	07:15:00	USER					1-F-550 PICKUP, 1-ELITE PUMP TRUCK, 1-660 BULK TRUCK, 1-WASH UP TRUCK

WPX/YOUBERG RU 44-7/PRODUCTION



o Safety Meeting n/a;n/a;n/a;n/a	⑪ Fill Lines 8.14;0;19;1.5	⑯ Slow Rate 13.53;225.6;580;6.9	21 Slow Rate 8.41;141.4;2233;6.8	26 Rig-Down Equipment n/a;n/a;n/a;n/a
Equipment n/a;n/a;n/a;n/a	⑫ Test Lines 8.44;2.1;5421;0	⑰ Shutdown 13.5;250.3;177;0.1	22 Bump Plug 8.39;149;2559;0	27 Rig-Down Completed n/a;n/a;n/a;n/a
Completed n/a;n/a;n/a;n/a	⑬ Mud Flush 8.34;0.2;32;1.4	⑱ Clean Lines 12.71;1.1;37;3.2	23 Check Floats 8.37;149;2160;0	28 Pre-Convoy Safety Meeting n/a;n/a;n/a;n/a
Safety Meeting 8.21;0;3;0	⑭ Pump Lead Cement 8.33;0.1;563;4	⑲ Drop Top Plug 8.5;10.2;10;0	24 End Job 8.23;0;9;0	29 Crew Leave Location n/a;n/a;n/a;n/a
62;0;2;0	⑮ Pump Tail Cement 13.4;0.1;1415;8.2	20 Pump Displacement 8.23;0.3;23;1.8	25 Pre-Rig Down Safety Meeting 8.28;8.7;9;0	

HALLIBURTON | iCem® Service

Created: 2015-03-24 22:20:35, Version: 4.1.107

Edit

Customer: WPX ENERGY ROCKY MOUNTAIN LLC-EBUS

Job Date: 3/25/2015 2:11:20 AM

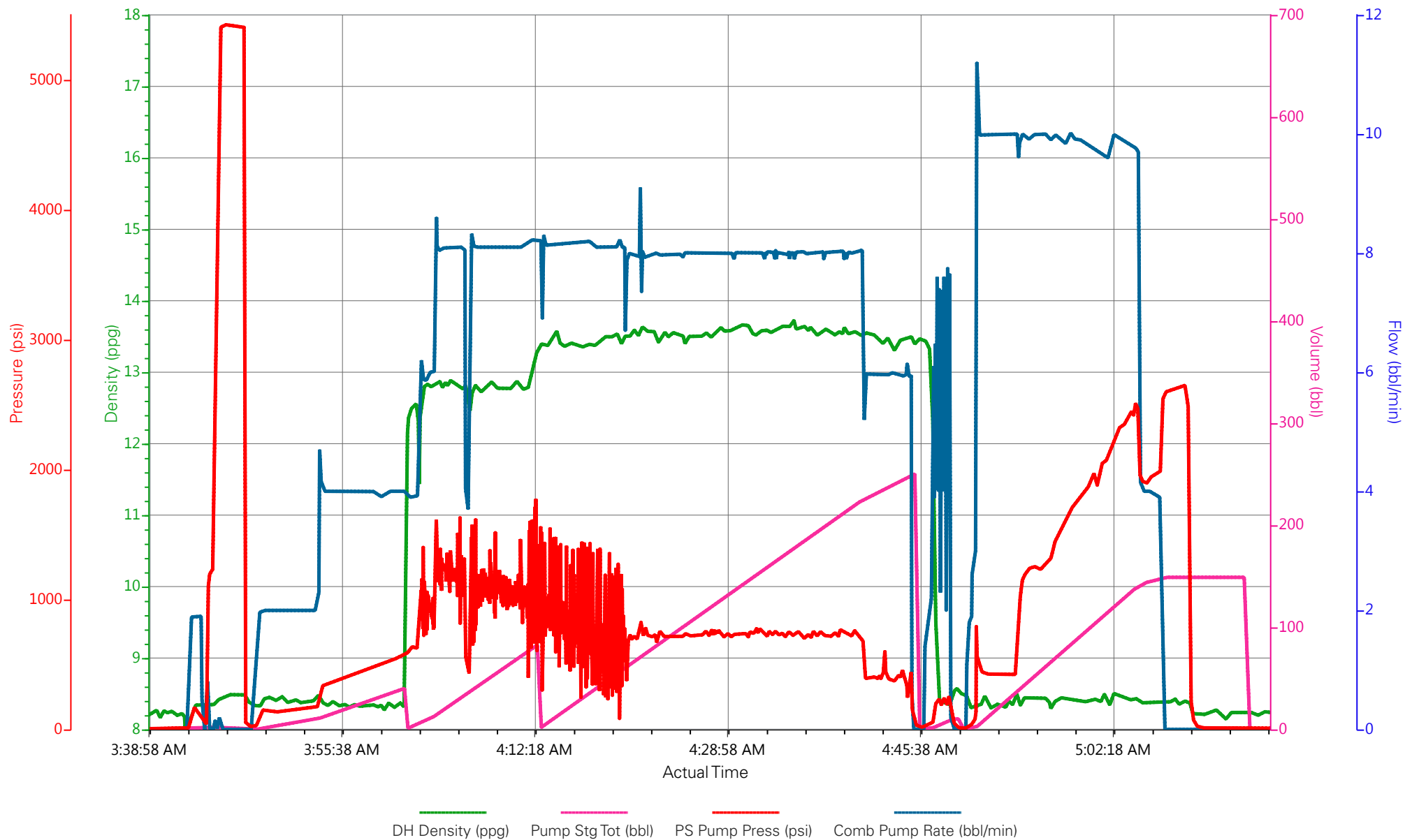
Well: YOUBERG RU 44-7

Representative: Dmitry Melnikoc

Sales Order #: 902232614

Supervisor/Operator: Carlton Kukus/Paul Salazar E-3

WPX/YOUBERG RU 44-7/PRODUCTION



EVENT #	EVENT	VOLUME	SACKS	WEIGHT	YIELD	GAL/ SK
1	Start Job					
6	Test Lines	5000.0				
	Mud Flush	40.0		8.43		
	Lead Cement	79.8	270	12.7	1.66	8.53
15	Tail Cement	246.2	790	13.5	1.75	7.63
	SHUTDOWN/DROP PLUG	0.0				
23	Displace w/Fresh Wate	148.1		8.4		
	SLOW RATE	138.1				
26	Land Plug	1910.0		500	OVER	
2	Release Psi / Job Over	0.0				
			Do Not Overdisplace			
DISPLACEMENT	TOTAL PIPE	SHOE JOINT LENGTH		FLOAT COLLAR	BBL/FT	H2O REQ.
148.10	9582.64	29.36		9553.28	0.0155	388
PSI to Lift Pipe		***** <u>Use Mud Scales on Each Tier</u> *****				
Total Displacement	148.10					
CALCULATED DIFFERENTIAL PSI		1910		TOTAL FLUID PUMPED		840
Collapse		Burst		SO#	902232614	

HALLIBURTON

Water Analysis Report

Company: WPX

Submitted by: Carl Kukus

Attention: J.Trout

Lease YOUBERG

Well # RU 44-7

Date: 3/24/2015

Date Rec.: 3/24/2015

S.O.# 902232614

Job Type: Production

Specific Gravity	<i>MAX</i>	1
pH	<i>8</i>	7
Potassium (K)	<i>5000</i>	200 Mg / L
Calcium (Ca)	<i>500</i>	120 Mg / L
Iron (FE2)	<i>300</i>	0 Mg / L
Chlorides (Cl)	<i>3000</i>	0 Mg / L
Sulfates (SO ₄)	<i>1500</i>	200 Mg / L
Chlorine (Cl ₂)		0 Mg / L
Temp	<i>40-80</i>	50 Deg
Total Dissolved Solids		380 Mg / L

Respectfully: Carl Kukus

Title: CEMENTING SUPERVISOR

Location: Grand Junction, CO

NOTICE:

This report is limited to the described sample tested. Any person using or relying on this report agrees that Halliburton shall not be liable for any loss or damage whether due to act or omission resulting from such report or if