

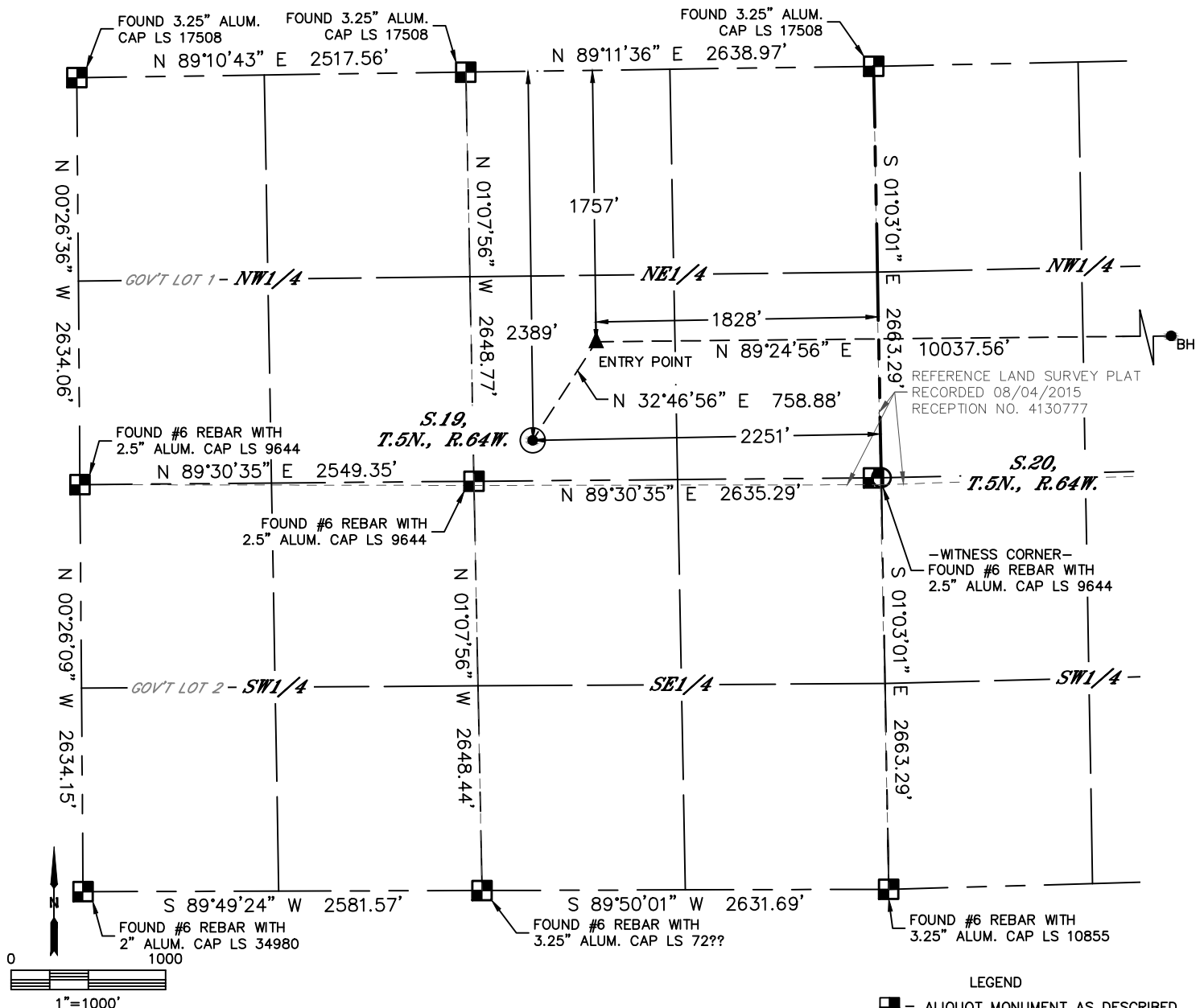


Lat40°, Inc. 6250 W. 10th Street, Unit 2 Greeley, CO 970-515-5294

WELL LOCATION CERTIFICATE

KLEIN 19N-432

SECTION: 19
TOWNSHIP: 5N
RANGE: 64W



| | | | | | | | | | |
|--|-----|------|----------|----------|------------|-------------------------|----------|------------------------|-----------|
| CLIENT: PDC ENERGY | | | | | | LANDMAN: AL BRAGG | | | |
| INSTRUMENT OPERATOR: BRIAN ROTTINGHAUS | | | | | | SURVEY DATE: 11-26-2013 | | SURFACE USE: CROP LAND | |
| SHL FOOTAGE | | | SHL LAT° | | SHL LONG ° | SHL PDOP | SHL ELEV | SHL 1/4/1/4 | SHL S-T-R |
| 2389 | FNL | 2251 | FEL | 40.38532 | -104.59138 | 2.9 | 4626 | SWNE | 19-5-64 |

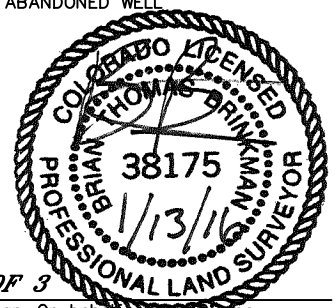
| BHL FOOTAGE | | | | BHL LAT ° | BHL LONG ° | BHL S-T-R | EP LAT ° | EP LONG ° | EP S-T-R |
|-------------|-----|------|-----|-----------|------------|-----------|----------|------------|----------|
| 1833 | FNL | 2353 | FEL | 40.38705 | -104.55386 | 21-5-64 | 40.38706 | -104.58989 | 19-5-64 |

| NEAREST CULTURAL ITEMS | |
|----------------------------------|-----------|
| BUILDING | ±2059' NE |
| BUILDING UNIT | ±2214' NW |
| HIGH OCCUPANCY BUILDING UNIT | 5280' + |
| DESIGNATED OUTSIDE ACTIVITY AREA | 5280' + |
| PUBLIC ROAD (COUNTY ROAD 54.5) | ±2046' SE |
| ABOVE GROUND UTILITY | ±958' W |
| RAILROAD | ±1526' SE |
| PROPERTY LINE | ±262' S |

NOTE:

- Bearings shown are Grid Bearings of the Colorado State Plane Coordinate System, North Zone, North American Datum 1983. The lineal dimensions as contained herein are based upon the "U.S. Survey Foot."
- Distances to section lines measured at 90 degrees from said section lines.
- Ground elevations are based on an observed GPS elevation (NAVD 1988 DATUM).
- Latitude and Longitude shown are (NAD 83 DATUM).
- IMPROVEMENTS: See LOCATION DRAWING for all visible improvements within 500' of oil and gas location.
- This map does not represent a boundary survey.

- LEGEND
- = ALIQUOT MONUMENT AS DESCRIBED
 - = CALCULATED POSITION
 - = SURFACE HOLE LOCATION (SHL)
 - ▲ = ENTRY POINT LOCATION (EP)
 - BH = BOTTOM HOLE LOCATION (BHL)
 - ⊕ = EXISTING WELL
 - ⊗ = ABANDONED WELL



SHEET 1 OF 3
Brian T. Brinkman—On behalf of Lat40°, Inc.
Colorado Licensed Professional Land Surveyor No. 38175
DATE: 1/13/2016
PROJECT#: 2013130

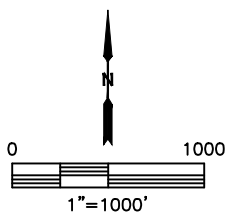
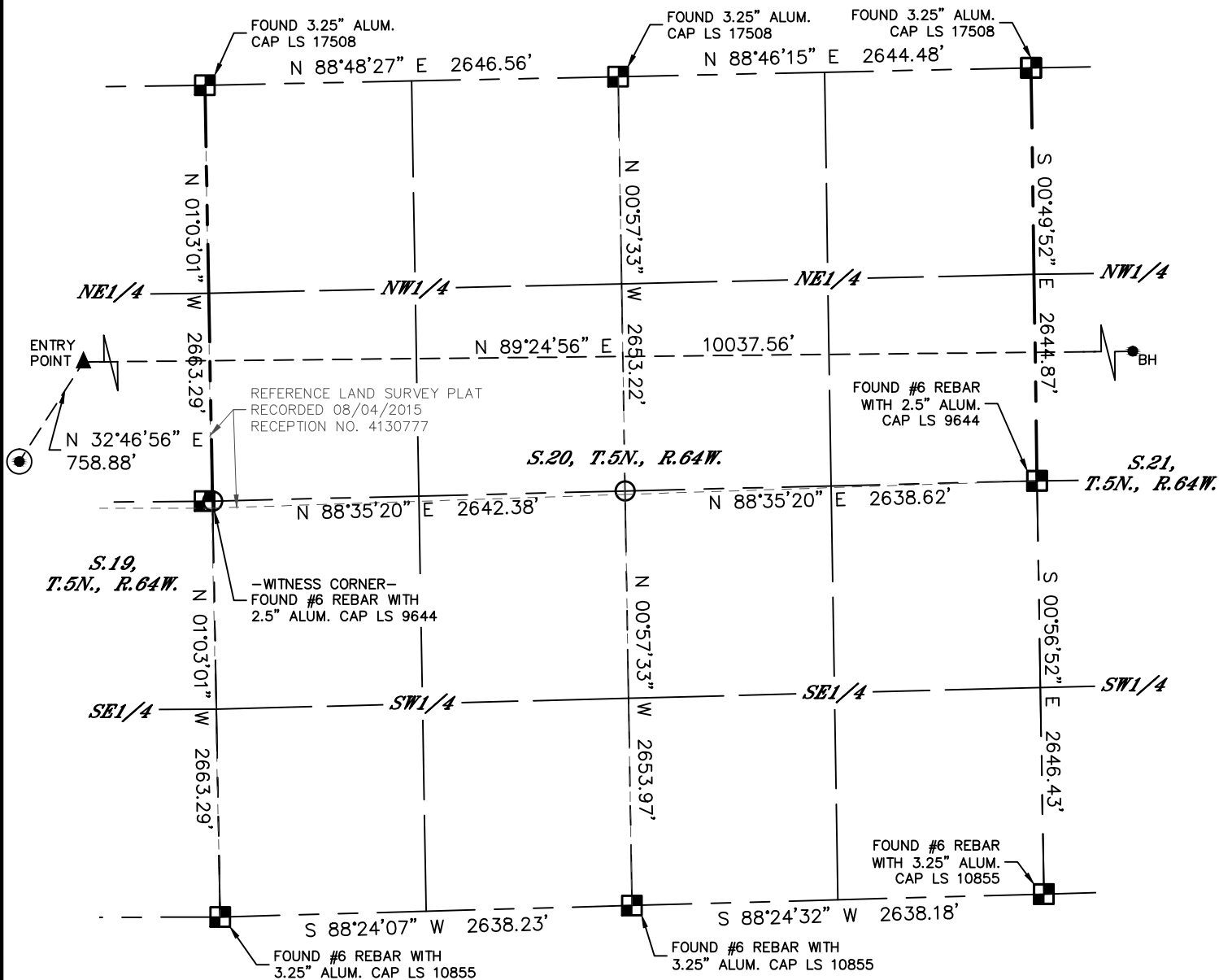


Lat40°, Inc. 6250 W. 10th Street, Unit 2 Greeley, CO 970-515-5294

WELL LOCATION CERTIFICATE

KLEIN 19N-432

SECTION: 19
TOWNSHIP: 5N
RANGE: 64W



- LEGEND
- = ALIQUOT MONUMENT AS DESCRIBED
 - = CALCULATED POSITION
 - = SURFACE HOLE LOCATION (SHL)
 - ▲ = ENTRY POINT LOCATION (EP)
 - _{BH} = BOTTOM HOLE LOCATION (BHL)
 - ⊕ = EXISTING WELL
 - ⊖ = ABANDONED WELL



SHEET 2 OF 3

Brian T. Brinkman—On behalf of Lat40°, Inc.
Colorado Licensed Professional Land Surveyor No. 38175
DATE: 1/13/2016
PROJECT#: 2013130

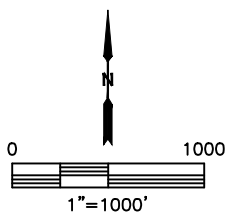
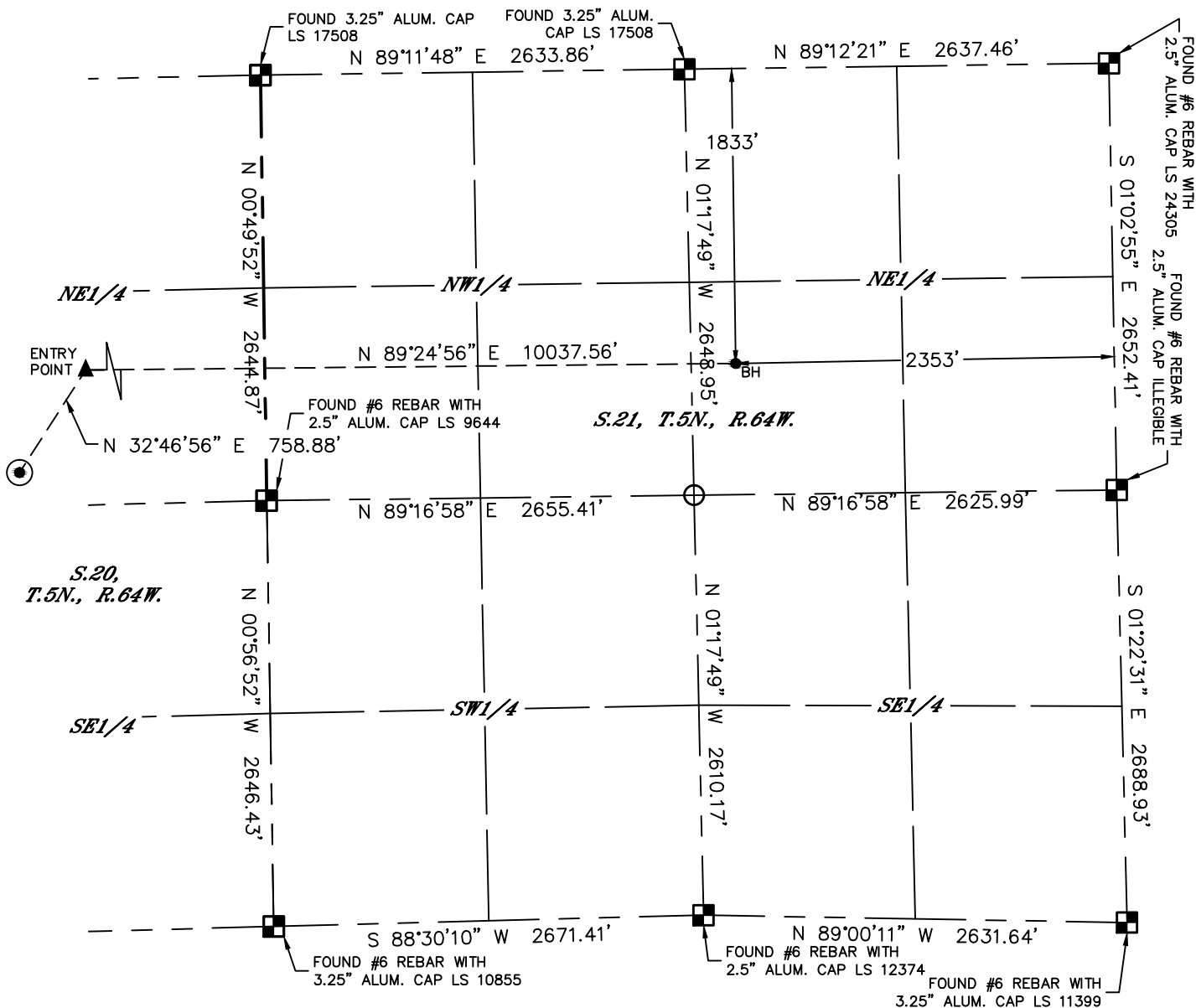


Lat40°, Inc. 6250 W. 10th Street, Unit 2 Greeley, CO 970-515-5294

WELL LOCATION CERTIFICATE

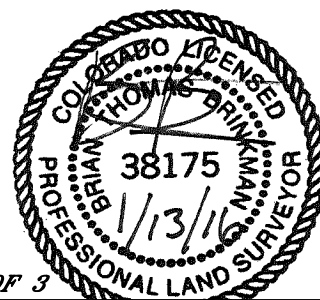
KLEIN 19N-432

SECTION: 19
TOWNSHIP: 5N
RANGE: 64W



LEGEND

- = ALIQUOT MONUMENT AS DESCRIBED
- = CALCULATED POSITION
- = SURFACE HOLE LOCATION (SHL)
- ▲ = ENTRY POINT LOCATION (EP)
- BH = BOTTOM HOLE LOCATION (BHL)
- ⊕ = EXISTING WELL
- ⊖ = ABANDONED WELL



SHEET 3 OF 3

Brian T. Brinkman—On behalf of Lat40°, Inc.
Colorado Licensed Professional Land Surveyor No. 38175
DATE: 1/13/2016
PROJECT#: 2013130

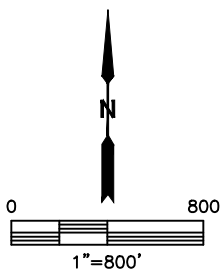
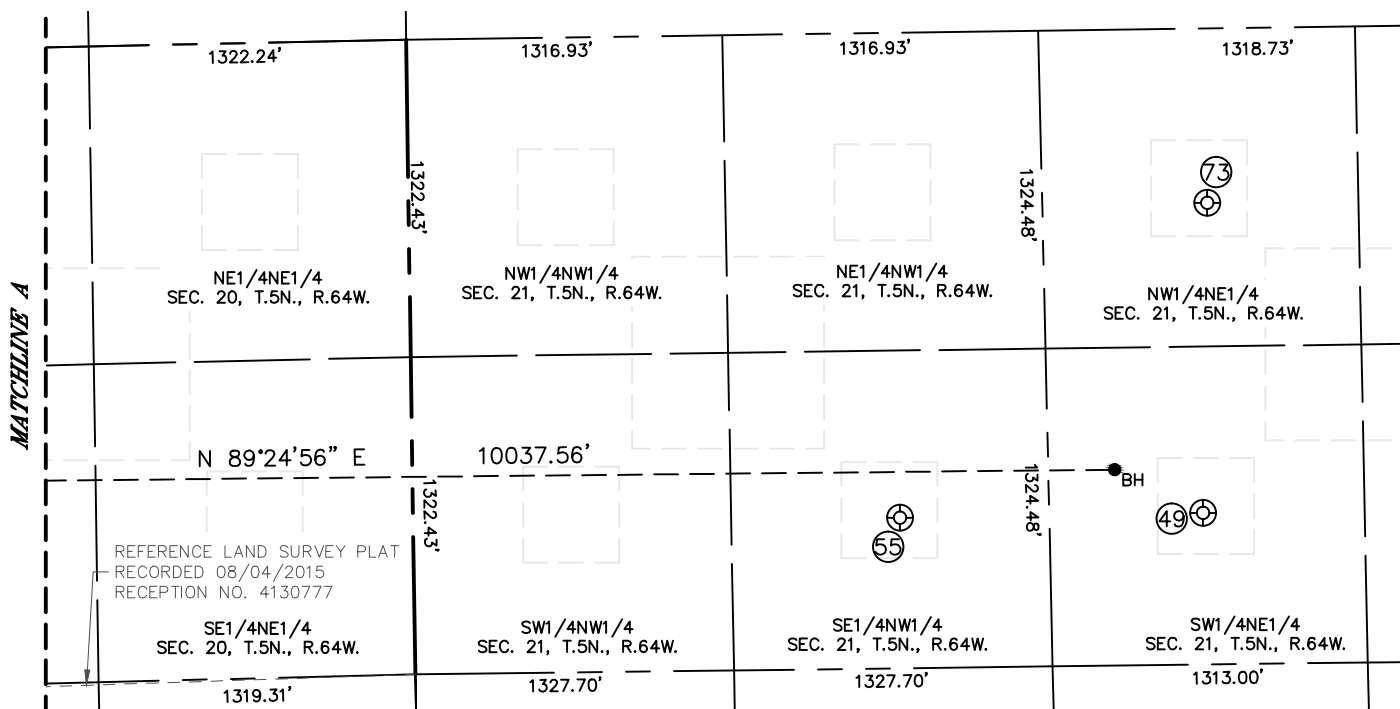
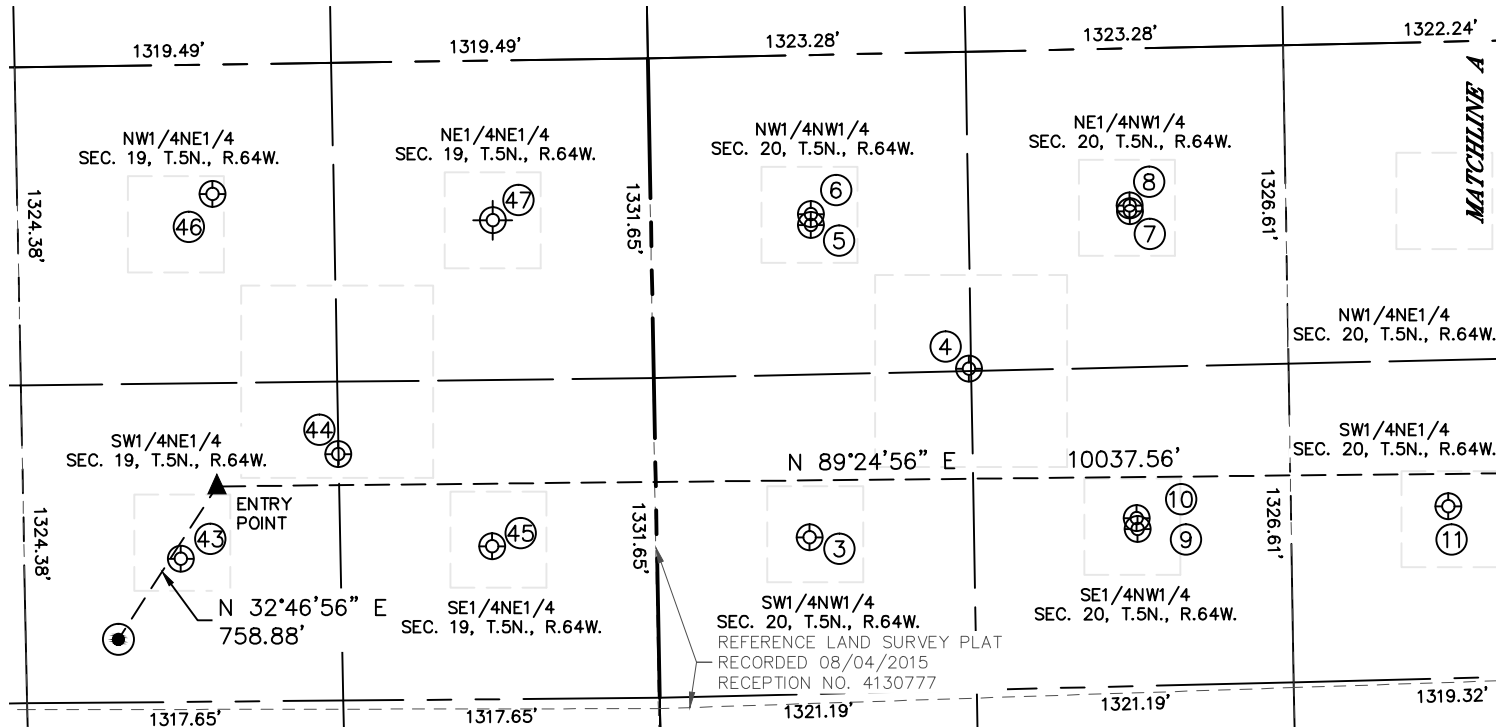


Lat40°, Inc. 6250 W. 10th Street, Unit 2 Greeley, CO 970-515-5294

SITE SKETCH

KLEIN 19N-432

SECTION: 19
TOWNSHIP: 5N
RANGE: 64W



SHEET 1 OF 2

DATE: 1/13/2016
PROJECT#: 2013130



Lat40°, Inc. 6250 W. 10th Street, Unit 2 Greeley, CO 970-515-5294

SITE SKETCH

KLEIN 19N-432

SECTION: 19
TOWNSHIP: 5N
RANGE: 64W

| WELL NO. | WELL NAME | SHL FOOTAGE | | | | SHL LAT° | SHL LONG° | PDOP | ELEV (FT.) | 1/4/1/4 |
|----------|--------------------|-------------|-----|------|-----|----------|------------|------|------------|---------|
| 4 | PIGEON 5-JAN | 1319 | FNL | 1312 | FWL | 40.38832 | -104.57863 | 2.1 | 4621 | NWNW |
| 5 | PIGEON 1-6B | 708 | FNL | 665 | FWL | 40.38998 | -104.58097 | 2.1 | 4622 | NWNW |
| 6 | PIGEON 1 | 528 | FNL | 666 | FWL | 40.39010 | -104.58096 | 2.1 | 4622 | NWNW |
| 7 | LUCILLE 1-6I | 679 | FNL | 1995 | FWL | 40.39010 | -104.57620 | 2.0 | 4619 | NENW |
| 8 | LUCILLE 20-1 | 654 | FNL | 1995 | FWL | 40.39016 | -104.57620 | 2.0 | 4620 | NENW |
| 37 | SOLIS 44-17 | 922 | FSL | 465 | FEL | 40.39457 | -104.56607 | 2.2 | 4618 | SESE |
| 38 | HOSHIKO/SOLIS 1 | 544 | FSL | 2030 | FEL | 40.39349 | -104.57168 | 2.1 | 4618 | SWSE |
| 39 | MILLER 2 | 669 | FSL | 1995 | FWL | 40.39380 | -104.57623 | 2.0 | 4622 | SESW |
| 40 | MILLER 1 | 647 | FSL | 674 | FWL | 40.39370 | -104.58097 | 3.3 | 4624 | SWSW |
| 41 | HETTINGER 44-18 | 702 | FSL | 659 | FEL | 40.39382 | -104.58576 | 2.0 | 4625 | SESE |
| 42 | HETTINGER 34-18 | 661 | FSL | 1984 | FEL | 40.39370 | -104.59051 | 2.1 | 4627 | SWSE |
| 46 | SETH 1 | 540 | FNL | 1825 | FEL | 40.39040 | -104.58991 | 1.9 | 4627 | NWNE |
| 47 | PAIGE 1 | 665 | FNL | 659 | FEL | 40.39011 | 104.58570 | N/A | 4615 | NENE |
| 67 | PATRIOT B 16-13 | 660 | FSL | 660 | FWL | 40.39366 | -104.56224 | N/A | 4613 | SWSW |
| 68 | PATRIOT B 16-14 | 555 | FSL | 1976 | FWL | 40.39360 | -104.55730 | 1.6 | 4613 | SESW |
| 69 | PATRIOT B 16-15 | 464 | FSL | 1953 | FEL | 40.39336 | -104.55248 | 1.6 | 4610 | SWSE |
| 70 | PATRIOT B 16-24 | 1224 | FSL | 2565 | FWL | 40.39544 | -104.55520 | 1.6 | 4612 | SESW |
| 71 | PATRIOT B 16-23 | 1300 | FSL | 1307 | FEL | 40.39566 | -104.55019 | 1.6 | 4611 | SWSE |
| 73 | PLATTE VALLEY 2-21 | 727 | FNL | 1947 | FEL | 40.39009 | -104.55243 | 1.6 | 4608 | NWNE |

SHEET 2 OF 2

DATE: 1/13/2016
PROJECT#: 2013130