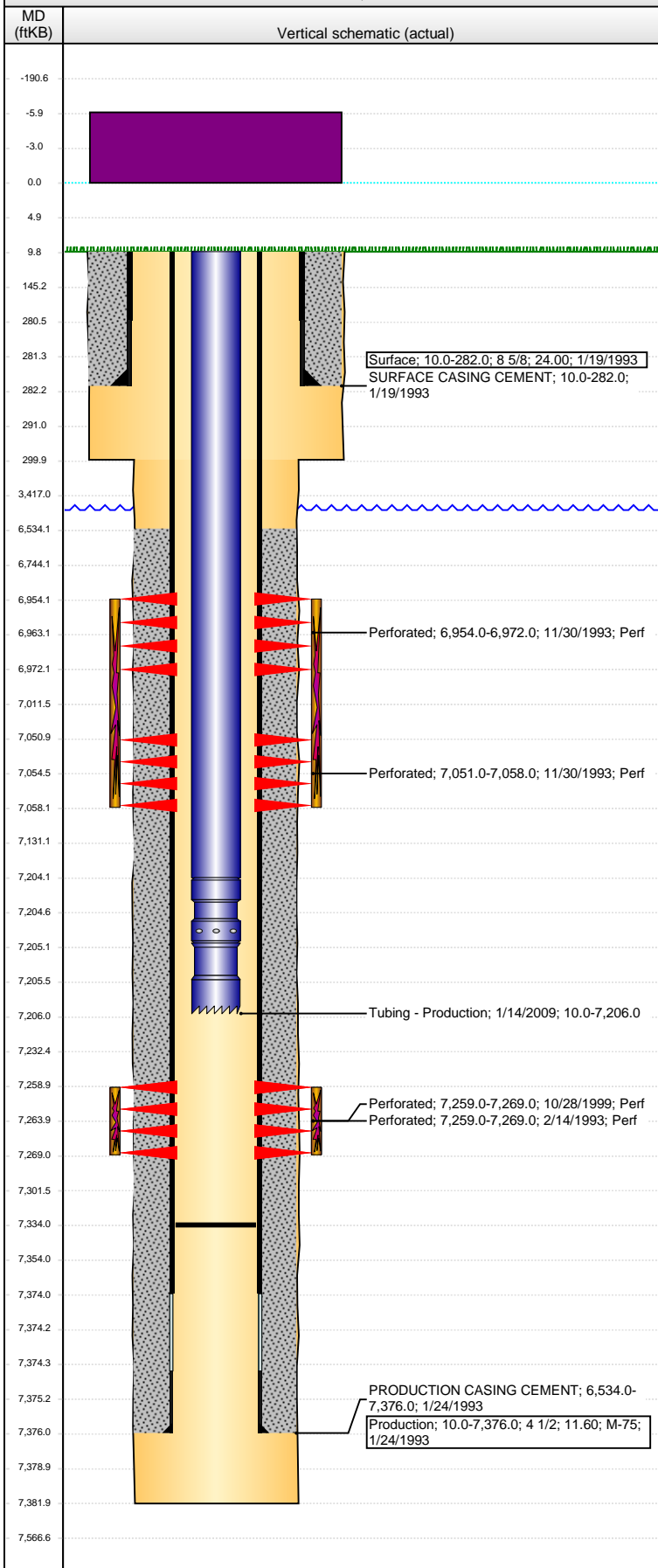


Well Name: MCCLELLAN 44-20

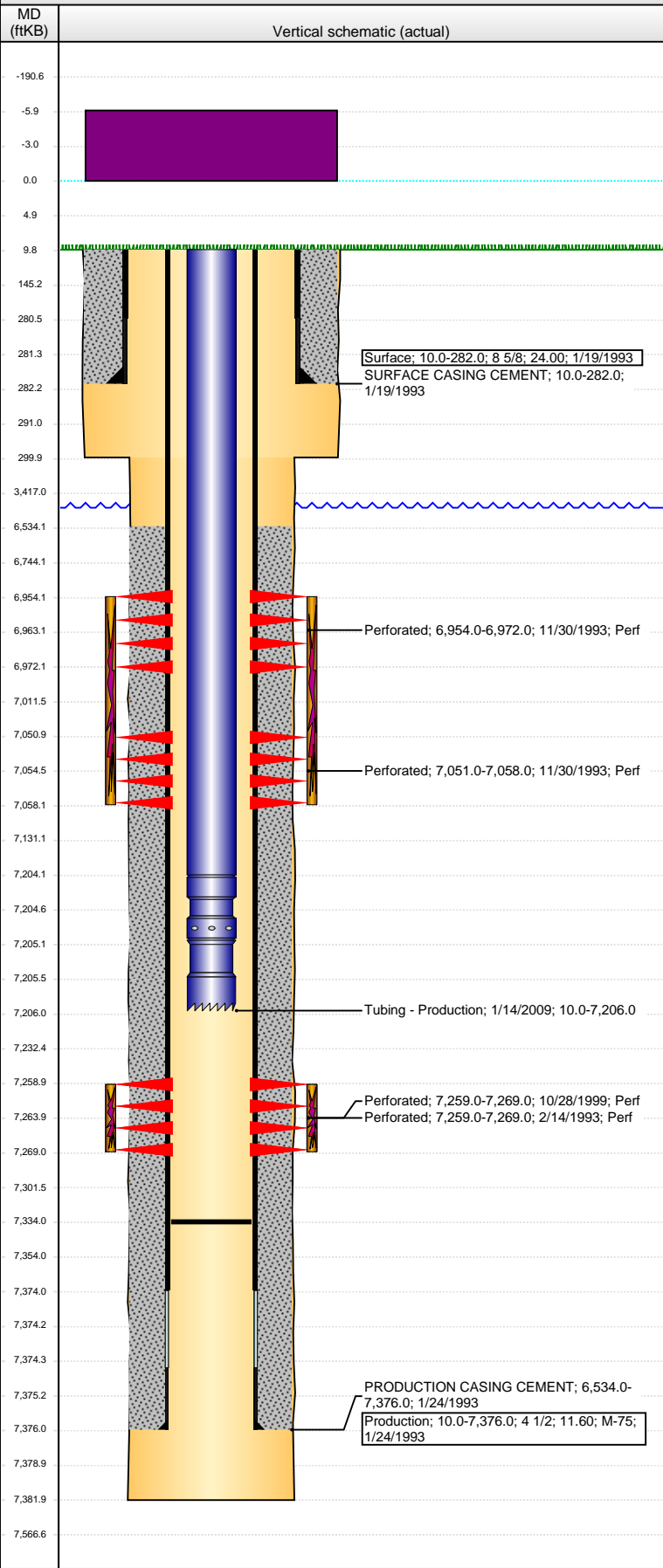
VERTICAL - ORIGINAL HOLE, 1/15/2016 9:40:29 AM



Well Header							
API	05-123-16546	Business Unit	DJ BASIN	District	15	Well Config	VERTICAL
Original KB Elevation (ft)	4,769.00	KB - GL / MSL (ftKB)	10.00	Spud Date	1/19/1993	P & A Date	
Comment							
Directions To Well							
Congressional Location							
Quarter 1	Quarter 2	Quarter 3	Quarter 4	Section	Township	Twship N...	Range Rng E/W Dir
		SE	SE	20	4	N	66 W
Bottom Hole Location							
North-South Distance (ft)		From N or S Line		East-West Distance (ft)		From E or W Line	
Plug Back Total Depths							
Date	Depth (ftKB)	Method		Com			
2/2/1993	7,314.0	CASED HOLE LOG		DEPTH LOGGER			
10/17/1999	7,315.0	TAG		TAG FILL @ 7315' (46' BELOW CODELL PERFS)			
11/6/1999	7,338.0	TAG		CIRCULATE SAND CLEAN TO RUN TBG			
1/13/2009	7,334.0	TAG		C/O TO RUN TBG			
Wellbore Sections							
Section Des		Size (in)	Act Top, MD (ftKB)		Act Btm, MD (ftKB)		
SURFACE		12 1/4	10.0		300.0		
PRODUCTION		7 7/8	300.0		7,382.0		
Zone Statuses							
Zone Name	Status Date	Status	Fluid Type	Job	Prod Method		
NIOBRARA	12/7/1993	PR		RECOMPLETI...			
NIOBRARA	1/7/1994	PR		RECOMPLETI...			
CODELL	2/23/1993	PR		DRILLING/CO...			
CODELL	11/25/1993	SI		RECOMPLETI...			
CODELL	1/7/1994	PR		RECOMPLETI...			
CODELL	11/8/1999	PR		RE-FRAC, 10/1...			
Casing Strings							
Surface, 282.0ftKB							
Casing Description	Run Date	OD (in)	Wt/Len (l...)	Grade	Top, MD (ft...)	MD (ftKB)	
Surface	1/19/1993	8 5/8	24.00		10.0	282.0	
Production, 7,376.0ftKB							
Casing Description	Run Date	OD (in)	Wt/Len (l...)	Grade	Top, MD (ft...)	MD (ftKB)	
Production	1/24/1993	4 1/2	11.60	M-75	10.0	7,376.0	
Cement							
Description					Top Depth (ftKB)	Bottom Depth (ftKB)	
SURFACE CASING CEMENT					10.0	282.0	
Description					Top Depth (ftKB)	Bottom Depth (ftKB)	
PRODUCTION CASING CEMENT					6,534.0	7,376.0	
Tubing Strings							
Tubing Description	Run Date	String...	ID (in)	Wt (lb/ft)	Grade	Len (ft)	Set De...
Tubing - Production	1/14/2009	2 3/8	1.995	4.70	J-55	7,196.00	
Tubing Components							
Item Des	OD (in)	Wt (lb/ft)	Grade	Jts	Len (ft)	Btm (ftKB)	Btm (TVD) (ftKB)
Tubing	2 3/8	4.70	J-55	239	7,194.00	7,204.0	
Seating Nipple	2 3/8			1	1.00	7,205.0	
Notched collar	2 3/8			1	1.00	7,206.0	
Perforation Data							
Zone	Bnch/St g	Entered Shot Total	Top (ftKB)	Btm (ftKB)	Date		
NIOBRARA, ORIGINAL HOLE	A		6,954.00	6,972.00	11/30/1993		
NIOBRARA, ORIGINAL HOLE	B		7,051.00	7,058.00	11/30/1993		
CODELL, ORIGINAL HOLE			7,259.00	7,269.00	2/14/1993		
CODELL, ORIGINAL HOLE		40	7,259.00	7,269.00	10/28/1999		
Stimulations & Treatments							
Date	Zone	Primary Job Type					
2/16/1993	CODELL, ORIGINAL HOLE	DRILLING/COMPLETION - ORIGINAL					
Technical Result		Tech Result Details			Tech Result Note		
Comment							

Well Name: MCCLELLAN 44-20

VERTICAL - ORIGINAL HOLE, 1/15/2016 9:40:31 AM



Stimulations & Treatments				
Date	Zone	Primary Job Type		
12/1/1993	NIOBRARA, ORIGINAL HOLE	RECOMPLETION		
Technical Result		Tech Result Details		Tech Result Note
Comment				
Date	Zone	Primary Job Type		
11/1/1999	CODELL, ORIGINAL HOLE	RE-FRAC		
Technical Result		Tech Result Details		Tech Result Note
Comment				
Other In Hole				
Run Date	Des	OD (in)	Top (ftKB)	Btm (ftKB)
Logs				
Date	Type	Top, MD (ftKB)	Btm, MD (ftKB)	
2/2/1993	CEMENT BOND	6,500.0	7,308.0	