



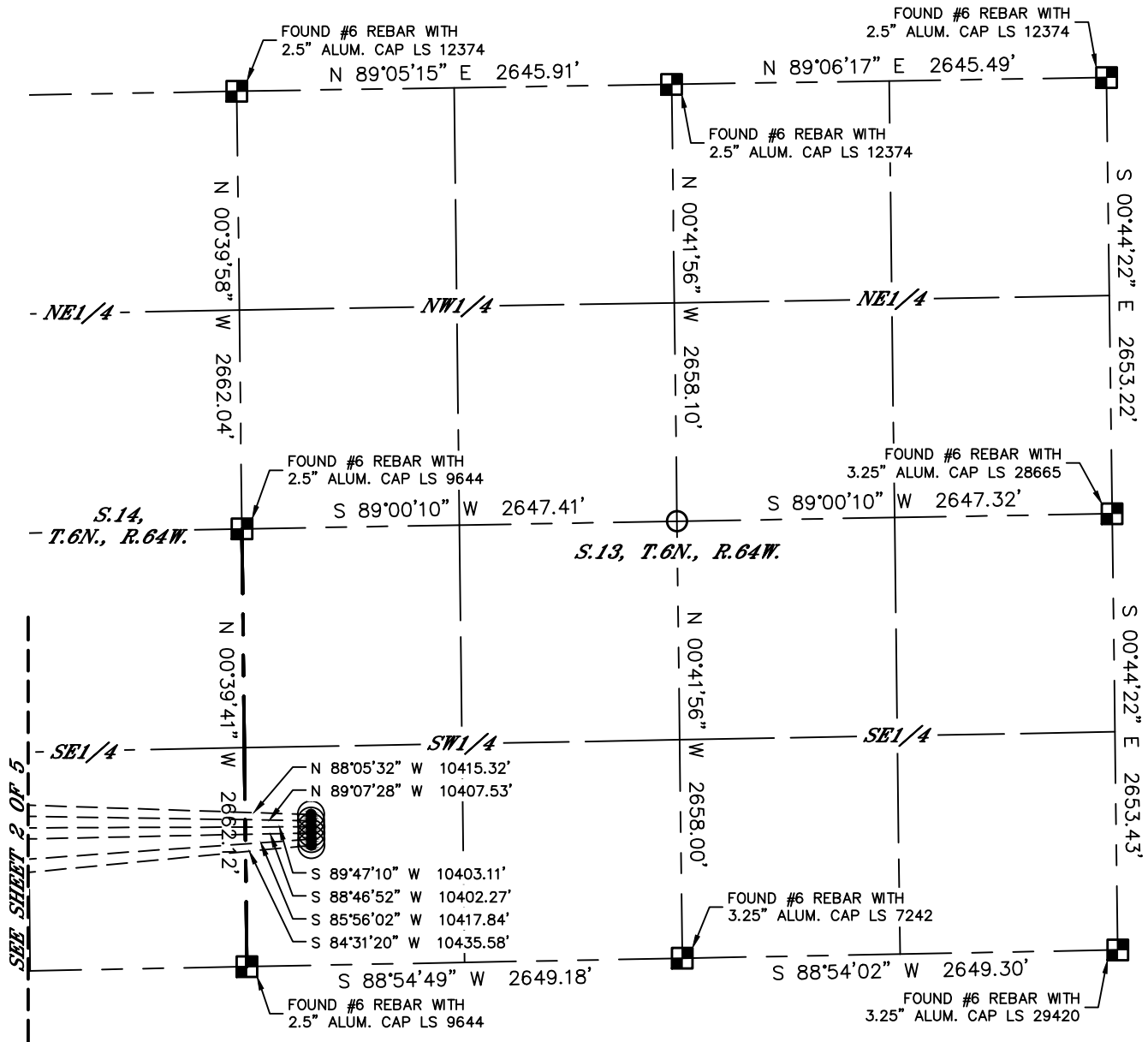
Lat40°, Inc. 6250 W. 10th Street, Unit 2, Greeley, CO 970-515-5294

MULTI-WELL PLAN

LAPP A15-632 PAD

THIS MAP DOES NOT REPRESENT A BOUNDARY SURVEY

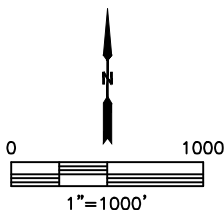
SECTION: 13
TOWNSHIP: 6N
RANGE: 64W
6TH. P.M.
WELD COUNTY, CO



#	WELL NAME	BHL FOOTAGE			BHL LAT °	BHL LONG °	BHL S-T-R
1	LAPP A15-632	1460	FSL	535	FWL	40.48272	-104.54378 15-6-64
2	LAPP A15-629	1235	FSL	535	FWL	40.48210	-104.54378 15-6-64
3	LAPP A15-625	1000	FSL	535	FWL	40.48145	-104.54378 15-6-64
4	LAPP A15-620	780	FSL	535	FWL	40.48085	-104.54377 15-6-64
5	LAPP A15-613	225	FSL	535	FWL	40.47933	-104.54376 15-6-64
6	LAPP A22-689	70	FNL	535	FWL	40.47852	-104.54376 22-6-64

LEGEND

- = ALIQUOT MONUMENT AS DESCRIBED
- = CALCULATED POSITION
- = SURFACE HOLE LOCATION (SHL)
- ▲ = ENTRY POINT LOCATION (EP)
- _{BH} = BOTTOM HOLE LOCATION (BHL)
- ⊙ = EXISTING WELL
- ⊙ = ABANDONED WELL



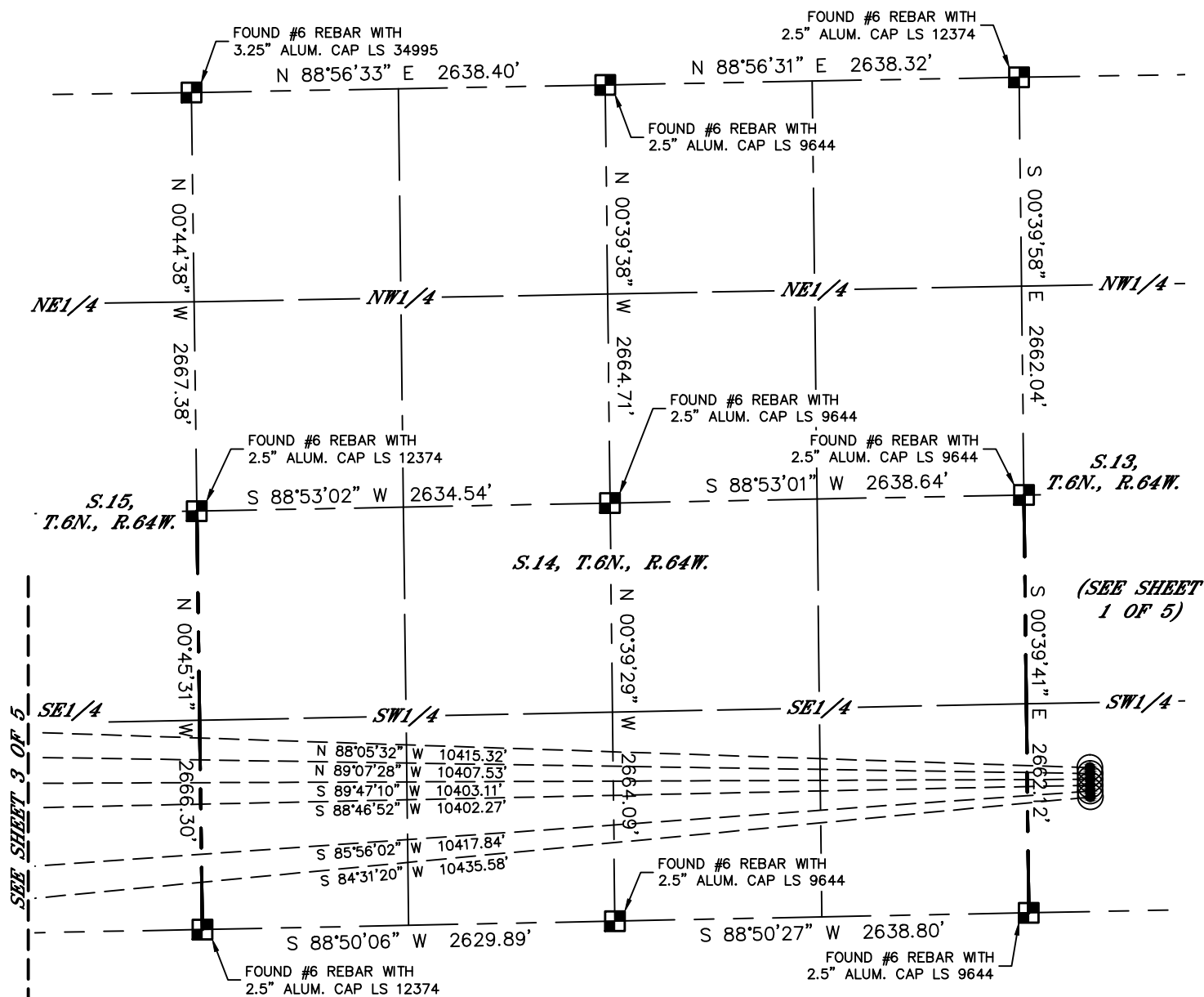
Lat40°, Inc. 6250 W. 10th Street, Unit 2, Greeley, CO 970-515-5294

MULTI-WELL PLAN

LAPP A15-632 PAD








THIS MAP DOES NOT REPRESENT A BOUNDARY SURVEY

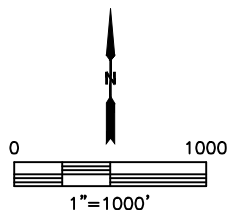
SECTION: 13
TOWNSHIP: 6N
RANGE: 64W
6TH. P.M.
WELD COUNTY, CO



#	WELL NAME	BHL FOOTAGE				BHL LAT °	BHL LONG °	BHL S-T-R
1	LAPP A15-632	1460	FSL	535	FWL	40.48272	-104.54378	15-6-64
2	LAPP A15-629	1235	FSL	535	FWL	40.48210	-104.54378	15-6-64
3	LAPP A15-625	1000	FSL	535	FWL	40.48145	-104.54378	15-6-64
4	LAPP A15-620	780	FSL	535	FWL	40.48085	-104.54377	15-6-64
5	LAPP A15-613	225	FSL	535	FWL	40.47933	-104.54376	15-6-64
6	LAPP A22-689	70	FNL	535	FWL	40.47852	-104.54376	22-6-64

LEGEND

-  = ALIQUOT MONUMENT AS DESCRIBED
 = CALCULATED POSITION
 = SURFACE HOLE LOCATION (SHL)
 = ENTRY POINT LOCATION (EP)
 = BOTTOM HOLE LOCATION (BHL)
 = EXISTING WELL
 = ABANDONED WELL





Lat40°, Inc. 6250 W. 10th Street, Unit 2, Greeley, CO 970-515-5294

MULTI-WELL PLAN

LAPP A15-632 PAD

SECTION: 13
TOWNSHIP: 6N
RANGE: 64W
6TH. P.M.
WELD COUNTY, CO

