

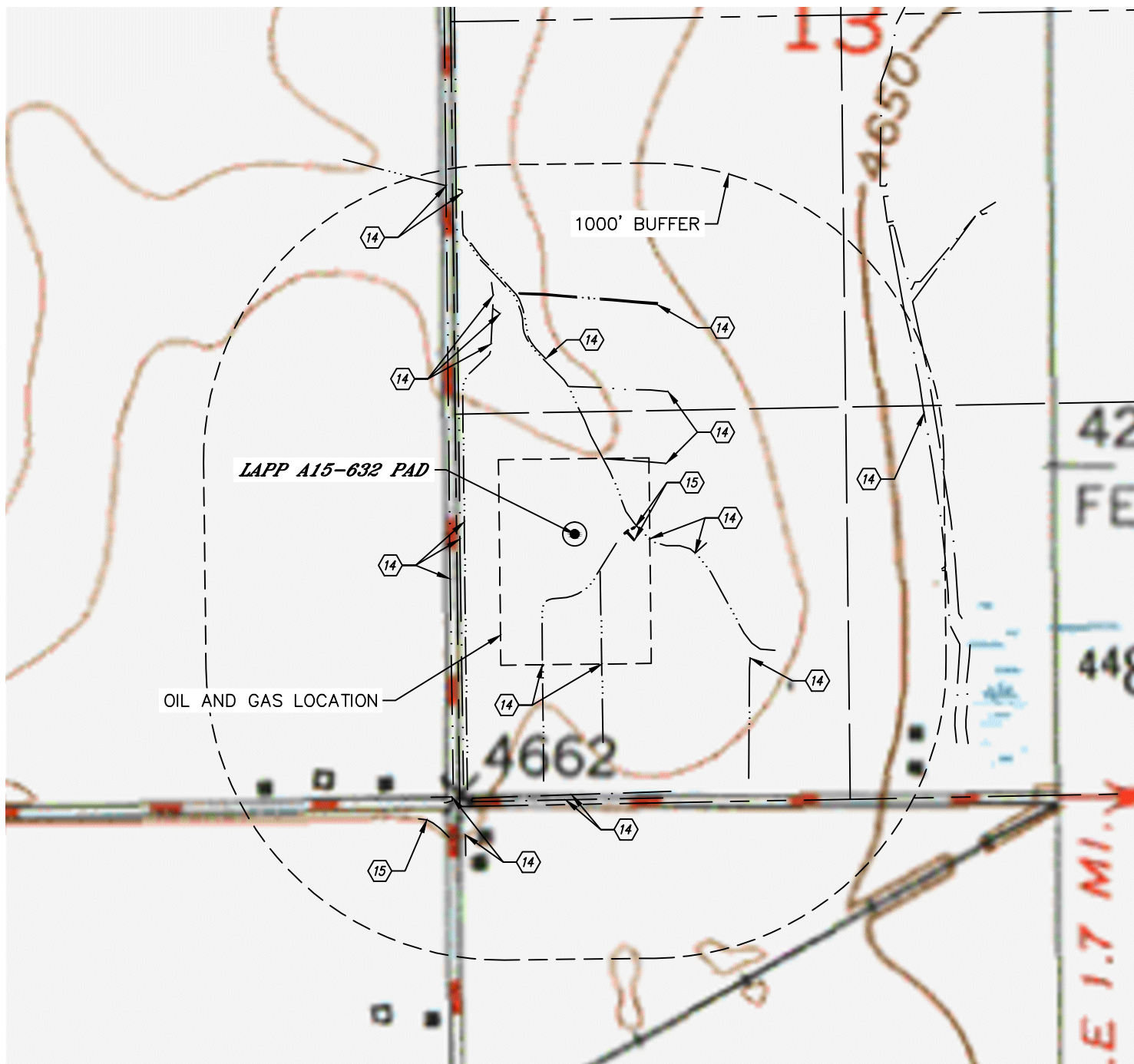


Lat40°, Inc. 6250 W. 10th Street, Unit 2, Greeley, CO 970-515-5294

HYDROLOGY MAP

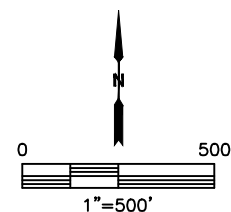
LAPP A15-632 PAD

SECTION: 13
TOWNSHIP: 6N
RANGE: 64W
6TH. P.M.
WELD COUNTY, CO



DISTANCES MEASURED FROM EDGE OF OIL AND GAS LOCATION.

- ⑭ DITCH 4-0' (INSIDE LOCATION), 119', 134' & 169' W, 153' & 336' E, 234' & 946' NE, 341', 393', 495' & 520' N, 441' & 459' S, 477' & 588' SW, 557', 912' & 945' NW
- ⑮ LOW AREA 2-0' (INSIDE LOCATION)



DATE: 9/21/2015
PROJECT#: 2015052