



Lat40°, Inc. 6250 W. 10th Street, Unit 2, Greeley, CO 970-515-5294

LOCATION PICTURES

LAPP A15-632 PAD

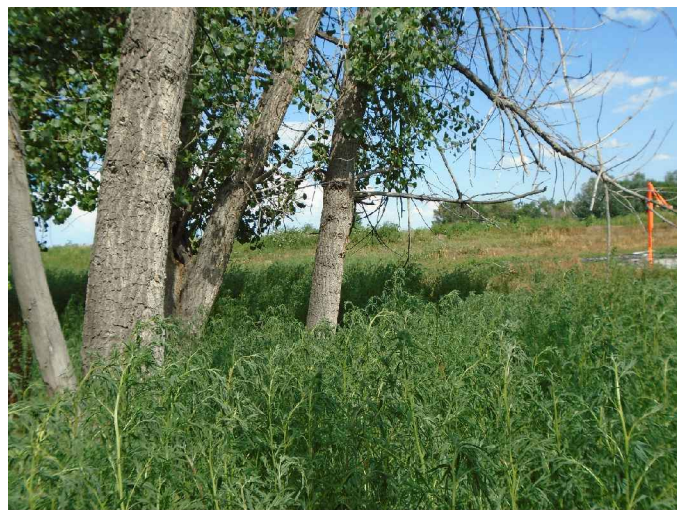
SECTION: 13
TOWNSHIP: 6N
RANGE: 64W
6TH. P.M.
WELD COUNTY, CO
DATE: 7/22/2015



VIEW NORTH



VIEW WEST



VIEW EAST



VIEW SOUTH

DATE: 9/21/2015
PROJECT#: 2015052