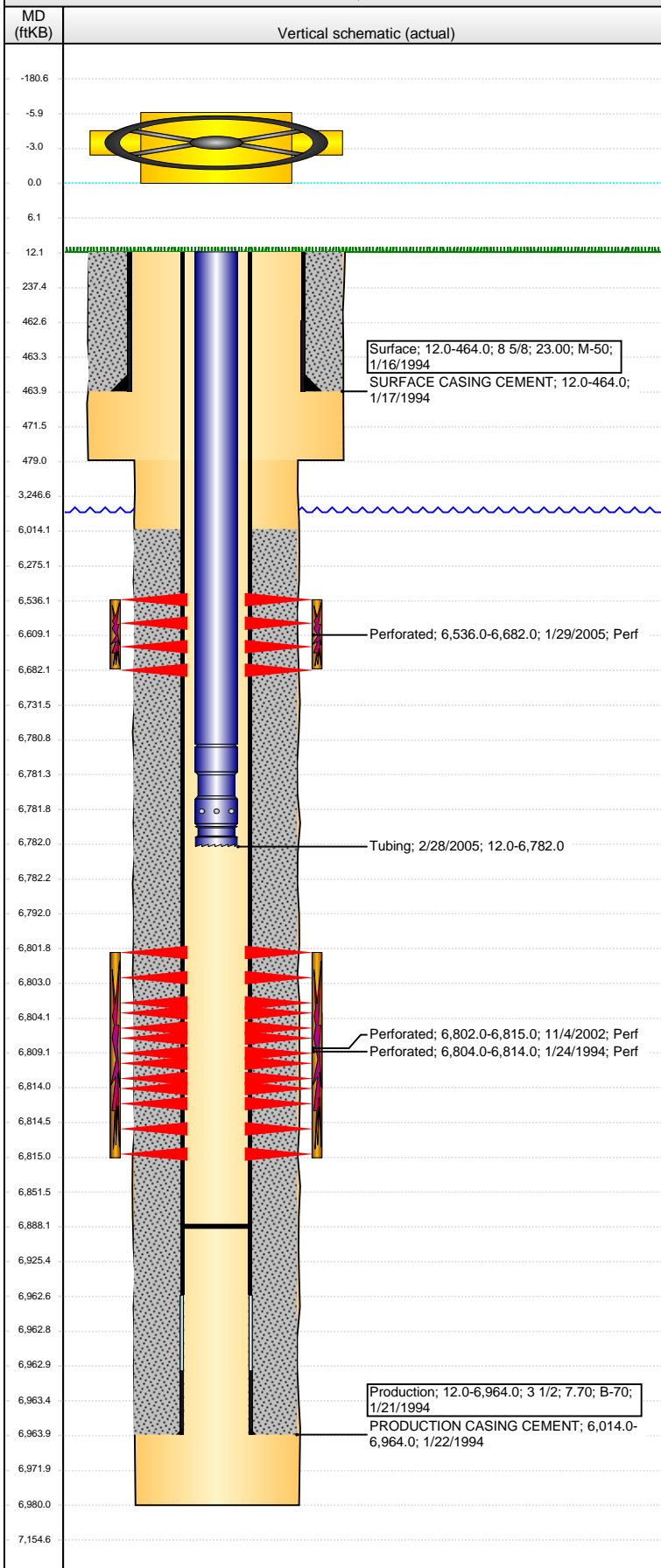


Well Name: COLEMAN 22-0714

VERTICAL - ORIGINAL HOLE, 1/14/2016 10:23:23 AM



Well Header

API	Business Unit	District	Well Config
05-123-17861	DJ BASIN	15	VERTICAL
Original KB Elevation (ft)	KB - GL / MSL (ftKB)	Spud Date	P & A Date
4,667.00	12.00	1/16/1994	

Comment

NO CBL IN WELL FILE OR STATE WEBSITE.

Directions To Well

Congressional Location

Quarter 1	Quarter 2	Quarter 3	Quarter 4	Section	Township	Twtnshp N...	Range	Rng E/W Dir
		SW	NE	22	4	N	64	W

Bottom Hole Location

North-South Distance (ft)	From N or S Line	East-West Distance (ft)	From E or W Line
1,982.0	FNL	1,872.0	FEL

Plug Back Total Depths

Date	Depth (ftKB)	Method	Com
2/26/2005	6,888.0	TAG	CLEAN OUT TO 6888'

Wellbore Sections

Section Des	Size (in)	Act Top, MD (ftKB)	Act Btm, MD (ftKB)
SURFACE	12 1/4	12.0	479.0
PRODUCTION	7 7/8	479.0	6,980.0

Zone Statuses

Zone Name	Status Date	Status	Fluid Type	Job	Prod Method
NIOBRARA	2/3/2005	PR	Oil	RECOMPLETI...	
CODELL	1/31/1994	PR	Oil	DRILLING/CO...	
CODELL	11/6/2002	PR	Oil	RE-FRAC, 10/2...	
CODELL	1/28/2005	SI	Oil	RECOMPLETI...	
CODELL	3/1/2005	PR	Oil	COMMINGLE...	

Casing Strings

Surface, 464.0ftKB

Casing Description	Run Date	OD (in)	Wt/Len (l...	Grade	Top, MD (ft...	MD (ftKB)
Surface	1/16/1994	8 5/8	23.00	M-50	12.0	464.0

Production, 6,964.0ftKB

Casing Description	Run Date	OD (in)	Wt/Len (l...	Grade	Top, MD (ft...	MD (ftKB)
Production	1/21/1994	3 1/2	7.70	B-70	12.0	6,964.0

Cement

Description	Top Depth (ftKB)	Bottom Depth (ftKB)
SURFACE CASING CEMENT	12.0	464.0
Description	Top Depth (ftKB)	Bottom Depth (ftKB)
PRODUCTION CASING CEMENT	6,014.0	6,964.0

Tubing Strings

Tubing Description	Run Date	String...	ID (in)	Wt (lb/ft)	Grade	Len (ft)	Set De...
Tubing	2/28/2005	2 1/16	1.751	3.25	J-55	6,770.00	

Tubing Components

Item Des	OD (in)	Wt (lb/ft)	Grade	Jts	Len (ft)	Btm (ftKB)	Btm (TVD) (ftKB)
Tubing	2 1/16	3.25	J-55	202	6,768.90	6,780.9	
Pump Seating	2				1.00	6,781.9	
Nipple	1/16						
Notched collar	2 1/16				0.10	6,782.0	

Perforation Data

Zone	Bnch/St g	Entered Shot Total	Top (ftKB)	Btm (ftKB)	Date
NIOBRARA, ORIGINAL HOLE		204	6,536.00	6,682.00	1/29/2005
CODELL, ORIGINAL HOLE		52	6,802.00	6,815.00	11/4/2002
CODELL, ORIGINAL HOLE		20	6,804.00	6,814.00	1/24/1994

Stimulations & Treatments

Date	Zone	Primary Job Type
1/25/1994	CODELL, ORIGINAL HOLE	DRILLING/COMPLETION - ORIGINAL
Technical Result	Tech Result Details	Tech Result Note
Comment		

Well Name: COLEMAN 22-0714

VERTICAL - ORIGINAL HOLE, 1/14/2016 10:23:25 AM

Stimulations & Treatments

Date 11/5/2002	Zone CODELL, ORIGINAL HOLE	Primary Job Type RE-FRAC
Technical Result	Tech Result Details	Tech Result Note

Comment

Date 2/2/2005	Zone NIOBRARA, ORIGINAL HOLE	Primary Job Type RECOMPLETION
Technical Result	Tech Result Details	Tech Result Note

Comment

Date 2/2/2005	Zone	Primary Job Type
Technical Result	Tech Result Details	Tech Result Note

Comment

Other In Hole

Run Date	Des	OD (in)	Top (ftKB)	Btm (ftKB)

Logs

Date	Type	Top, MD (ftKB)	Btm, MD (ftKB)
1/21/1994	GAMMA RAY	4,150.0	6,978.0
1/21/1994	INDUCTION	474.0	6,978.0
1/24/1994	GAMMA RAY	6,400.0	6,872.0

