

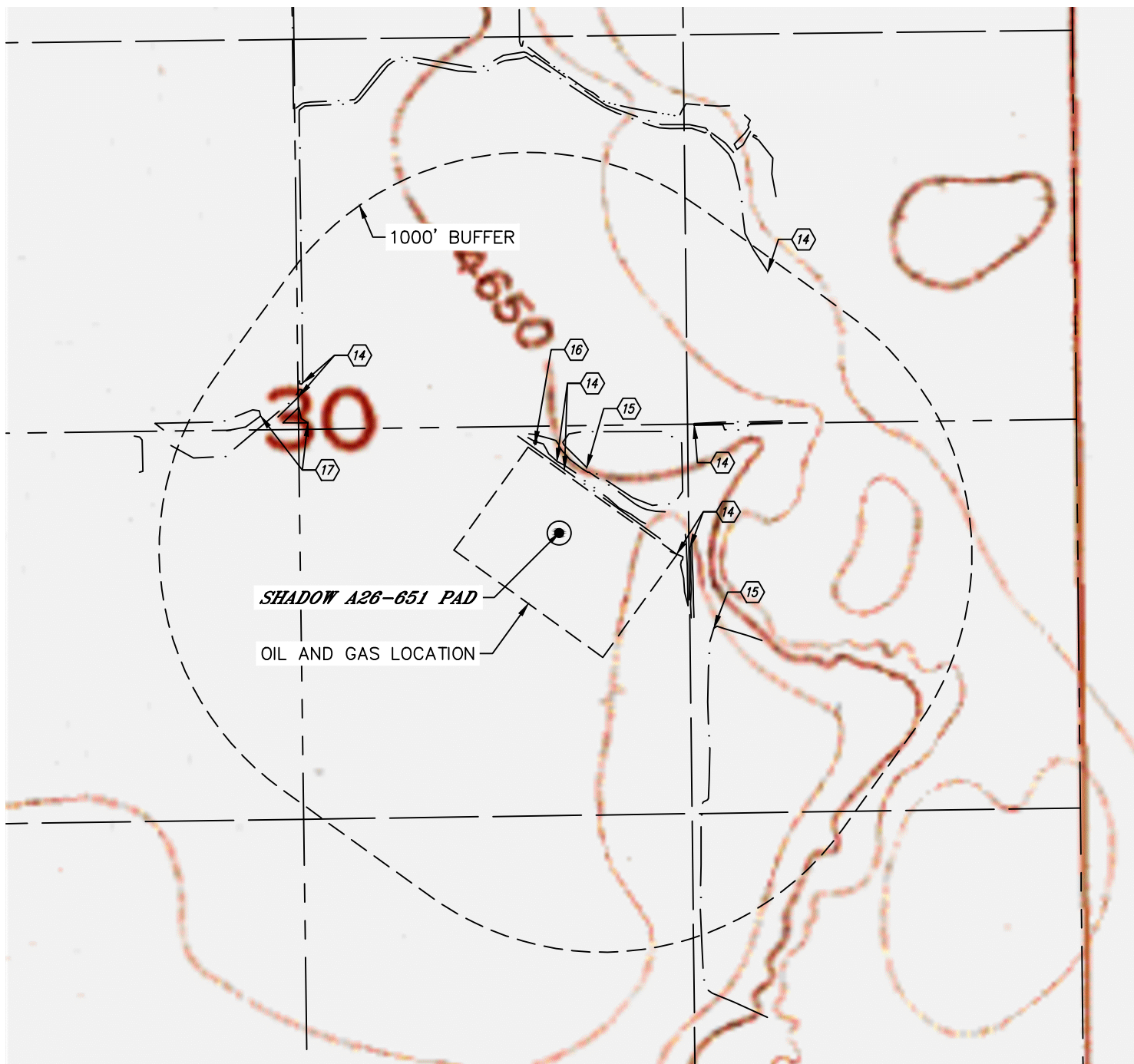


Lat40°, Inc. 6250 W. 10th Street, Unit 2, Greeley, CO 970-515-5294

HYDROLOGY MAP

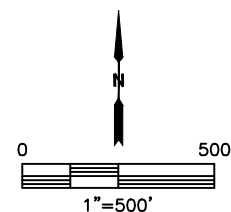
SHADOW A26-651 PAD

SECTION: 30
TOWNSHIP: 6N
RANGE: 63W
6TH. P.M.
WELD COUNTY, CO



DISTANCES MEASURED FROM EDGE OF OIL AND GAS LOCATION.

- ⑭ DITCH 0' (INSIDE LOCATION), 10', 18', 50', 389' & 958' NE, 731' & 747' NW
- ⑮ POND 60' NE, 247' SE
- ⑯ LOW AREA 22' NE
- ⑰ PIT 653' & 797' NW



DATE: 9/21/2015
PROJECT#: 2014163