



WILLIAMS PRODUCTION RMT COMPANY  
TYPICAL CROSS SECTIONS

50' 25' 0' 25' 50'  
SCALE

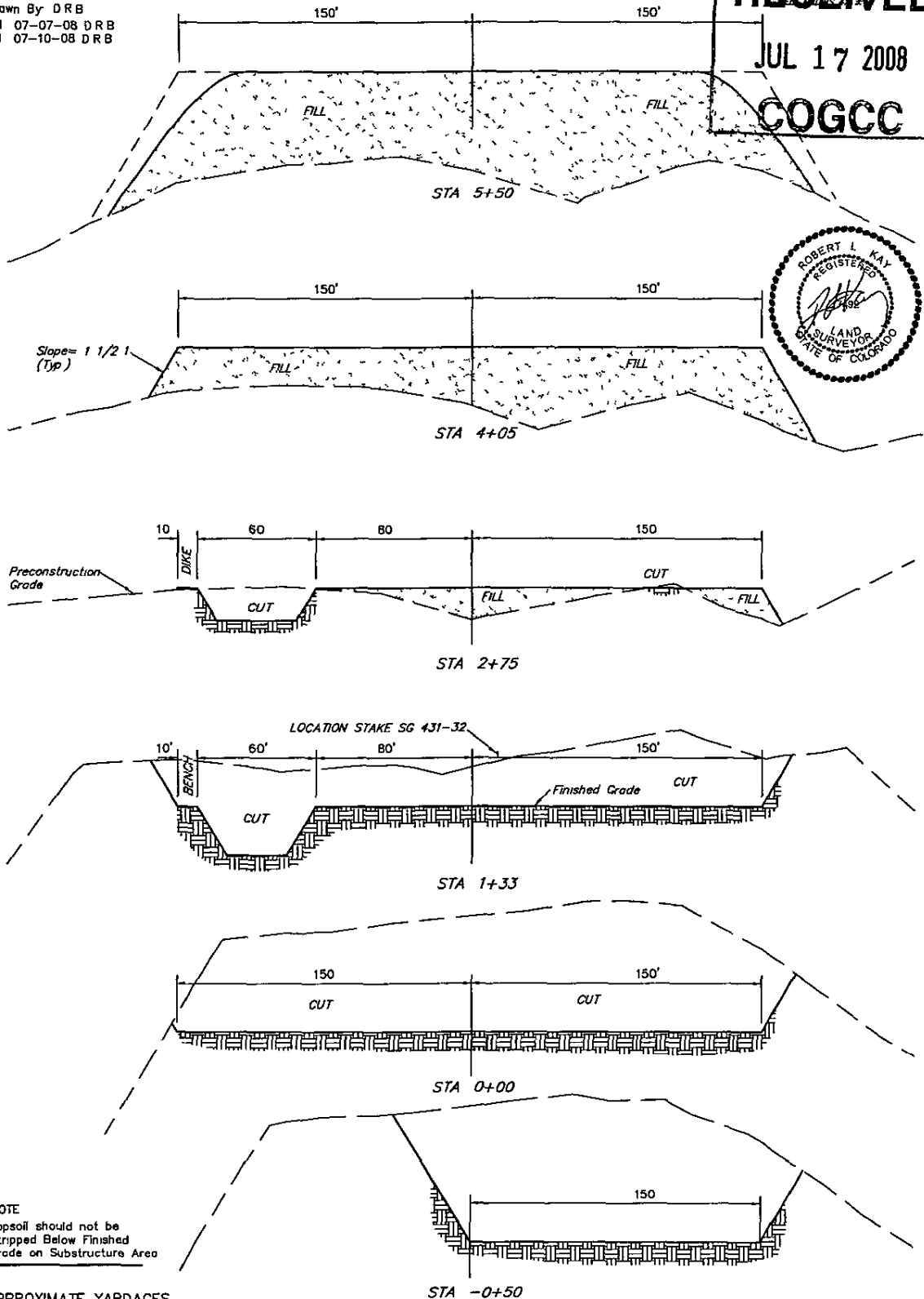
X-Section  
Scale  
1" = 20'  
1" = 50'

DATE: 06-25-08  
Drawn By: DRB  
Revised: 07-07-08 DRB  
Revised: 07-10-08 DRB

RECEIVED

JUL 17 2008

COGCC



NOTE  
Topsoil should not be  
Stripped Below Finished  
Grade on Substructure Area

APPROXIMATE YARDAGES

CUT  
(6") Topsoil Stripping = 4,250 Cu Yds  
Remaining Location = 49,040 Cu Yds  
TOTAL CUT = 53,290 CU YDS  
FILL = 46,860 CU YDS

STA -0+50  
EXCESS MATERIAL AFTER = 6,430 Cu Yds  
Topsoil & Pit Backfill = 6,430 Cu Yds  
(1/2 Pit Vol)  
EXCESS UNBALANCE = 0 Cu Yds  
(After Rehabilitation)

\* NOTE  
FILL QUANTITY INCLUDES  
3% FOR COMPACTION

UINTAH ENGINEERING & LAND SURVEYING  
65 So. 200 East • Vernal, Utah 84078 • (435) 789-1017

WILLIAMS PRODUCTION RMT COMPANY  
TYPICAL RIG LAYOUT

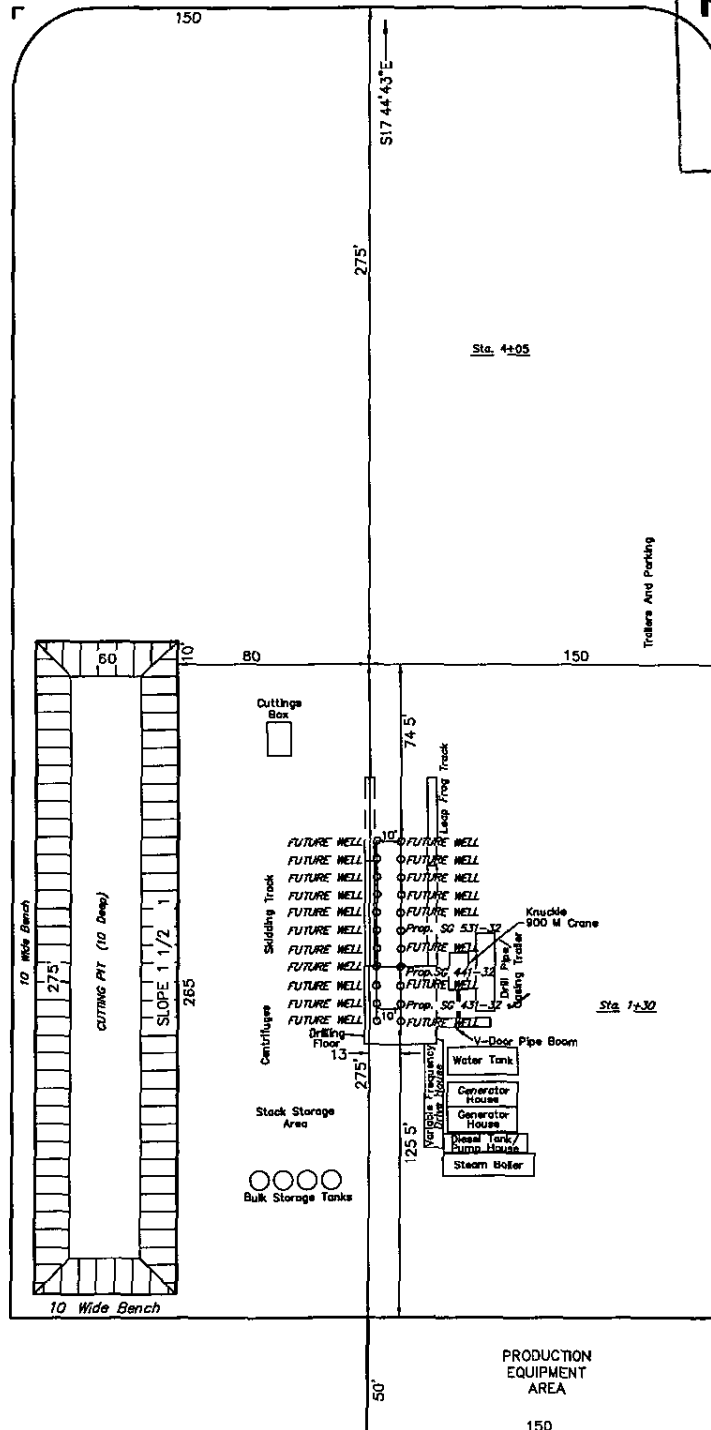


FIGURE #4



**RECEIVED**  
JUL 17 2008  
COGCC

SCALE 1" = 50'  
DATE 06-25-08  
Drawn By D.R.B.  
Revised 07-07-08 D.R.B.  
Revised 07-10-08 D.R.B.



**CUTTING PIT**  
Total Pit Capacity  
W/2' of Freeboard  
= 13,450 Bbls. ±  
Total Pit Volume  
= 4,360 Cu. Yds.

WILLIAMS PRODUCTION RMT COMPANY

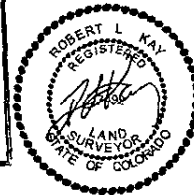
DIRECTION TO BOTTOM HOLE

FIGURE #6

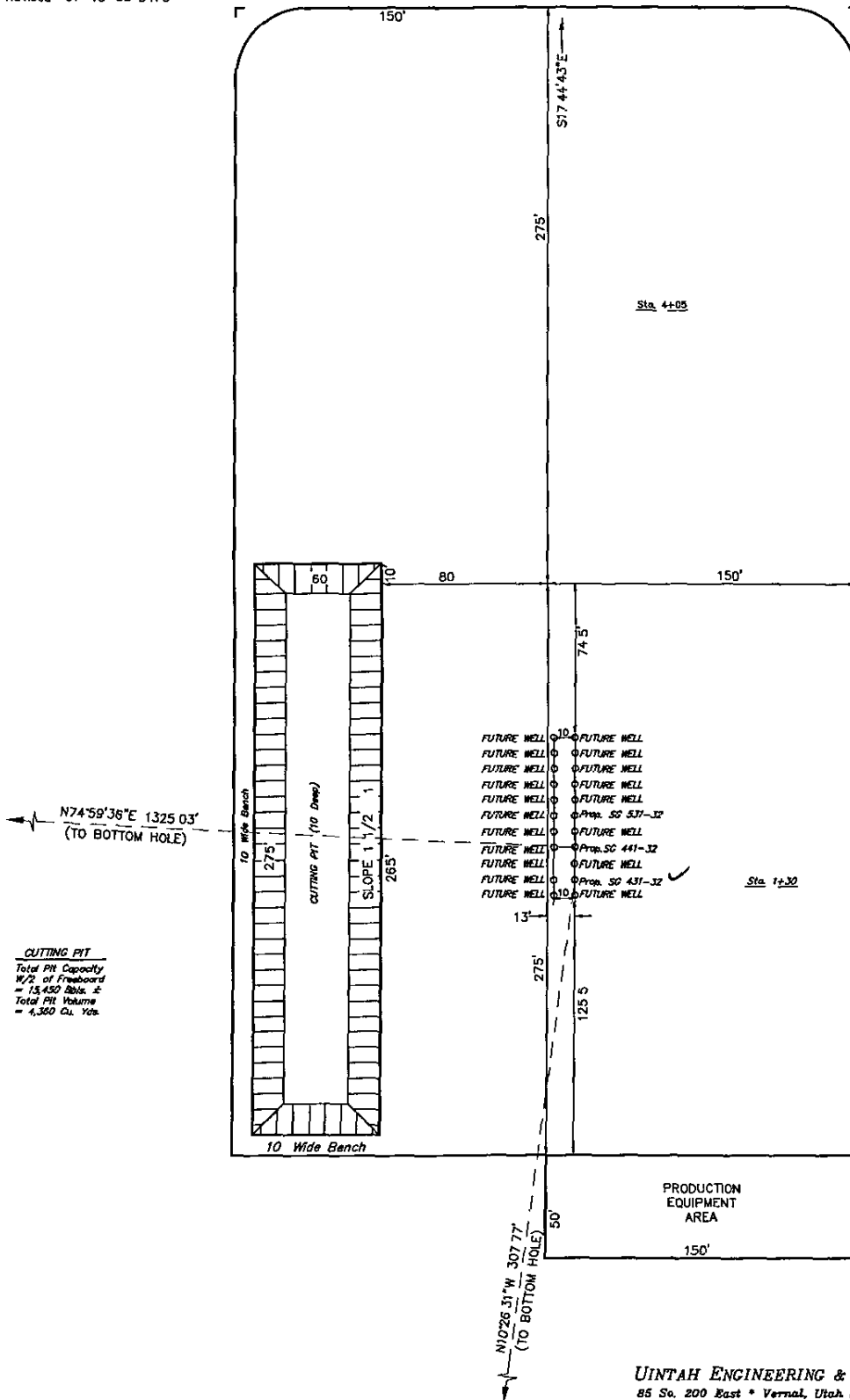
RECEIVED

JUL 17 2008

COGCC



SCALE 1" = 50'  
DATE 06-25-08  
Drawn By DRB  
Revised 07-07-08 DRB  
Revised 07-10-08 DRB



**CUTTING PIT**  
Total Pit Capacity  
W2: of Freeboard  
= 13,450 Bbls. ±  
Total Pit Volume  
= 4,360 Cu. Yds.

WILLIAMS PRODUCTION RMT COMPANY  
RECLAMATION PAD & PROD EQUIPMENT LAYOUT

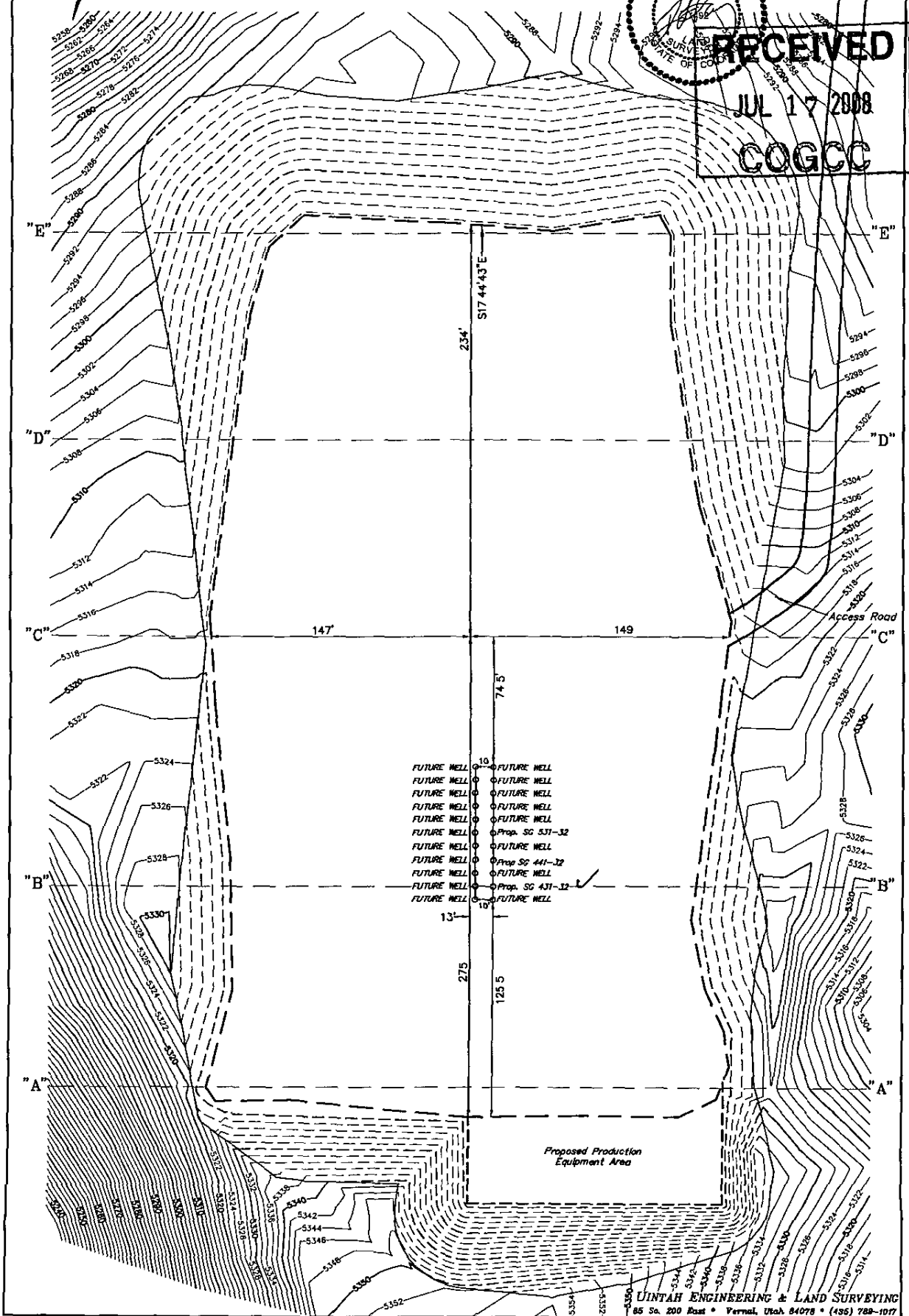
SCALE 1" = 50'  
DATE: 06-25-08  
Drawn By: DRB  
Revised: 07-07-08 DRB  
Revised: 07-10-08 DRB

30' 25' 0' 50'  
SCALE

FIGURE #7



**RECEIVED**  
JUL 17 2008  
**COGCC**



50' 25' 0' 50'

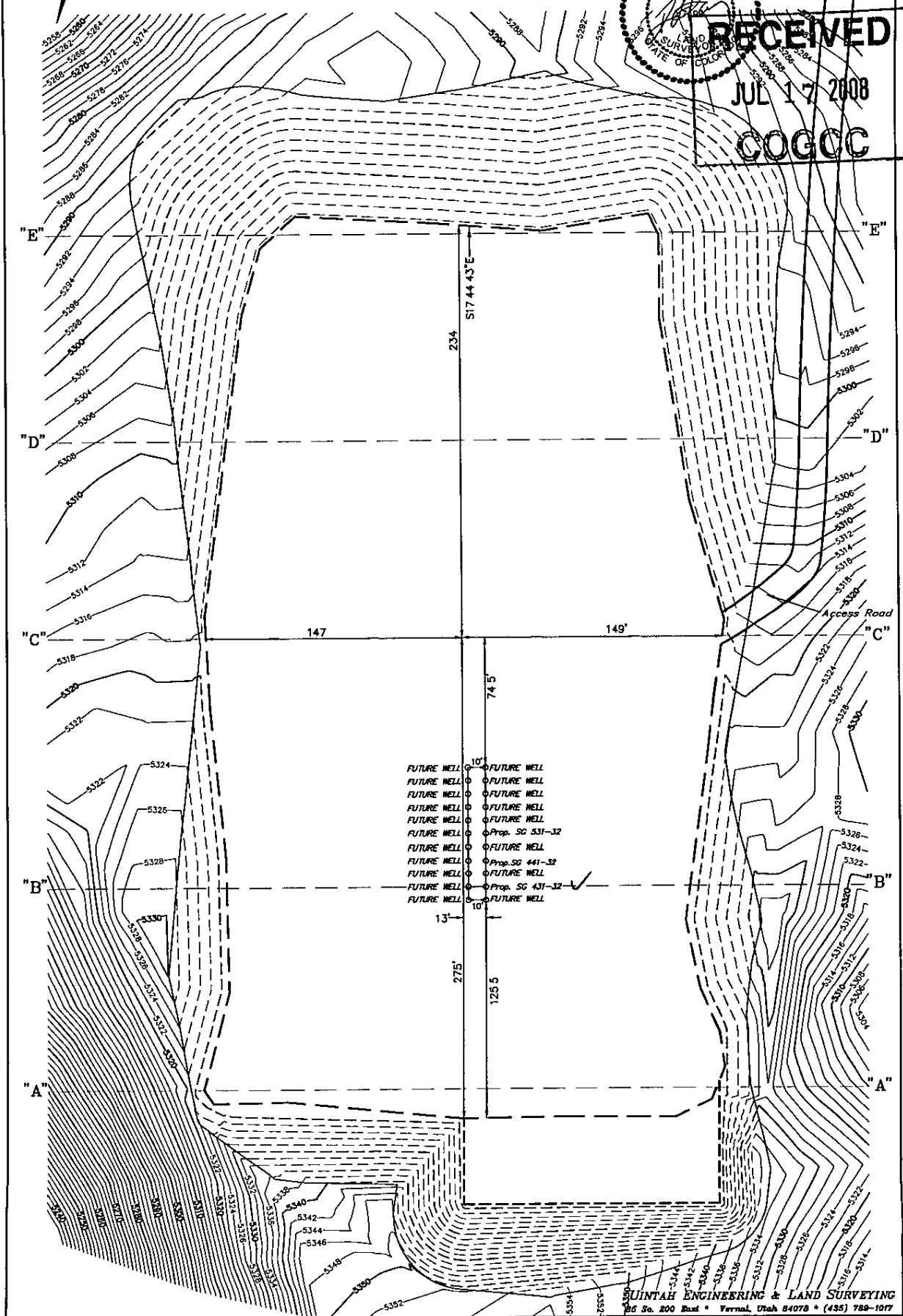
SCALE

FIGURE #8

**RECEIVED**

JUL 17 2008

~~COGCC~~



**QUINTAH ENGINEERING & LAND SURVEYING**  
26 So. 200 East • Vernal, Utah 84078 • (435) 789-1017

WILLIAMS PRODUCTION RMT COMPANY

CROSS SECTION FINAL RECLAMTION

X-Section  
Scale  
1" = 50'

DATE 06-25-08  
Drawn By DRB  
Revised 07-07-08 DRB  
Revised 07-10-08 DRB

RECEIVED

JUL 17 2008

COGCC

SCALE

FIGURE #9

