

**HALLIBURTON****RECEIVED**

JUL 09 2009

**COGCC****Cementing Job Log**  
**SURFACE***The Road to Excellence Starts with Safety*

Sold To #: 300721	Ship To #: 300721	Quote #:	Sales Order #: 6395370
Customer: WILLIAMS PRODUCTION RMT INC EBUSINE		Customer Rep: DUNIHO, AL	
Well Name: SG	Well #: 431-32	API/UWI #: 05-045-17200	
Field: RULISON	City (SAP): PARACHUTE	County/Parish: Garfield	State: Colorado
Lat: N 39.397 deg. OR N 39 deg. 23 min. 50.64 secs.		Long: W 108.131 deg. OR W -109 deg. 52 min. 9.109 secs.	
Contractor: CYCLONE 30	Rig/Platform Name/Num: CYCLONE30		
Job Purpose: Cement Surface Casing			
Well Type: Development Well	Job Type: Cement Surface Casing		
Sales Person: KOHL, KYLE	Srv Supervisor: GALLEGOS, JASON	MBU ID Emp #: 386647	

**Job Personnel**

HES Emp Name	Exp Hrs	Emp #	HES Emp Name	Exp Hrs	Emp #	HES Emp Name	Exp Hrs	Emp #
ANGLESTEIN, TROY Edward WM	13	436099	CHASE, BRAD Waddell	13	422281	GALLEGOS, JASON Michael	13	386647
GUSTIN, CODY Blake	13	386652						

**Equipment**

HES Unit #	Distance-1 way	HES Unit #	Distance-1 way	HES Unit #	Distance-1 way	HES Unit #	Distance-1 way
10829462	60 MILES	1096119	60 MILES	10214529	60 MILES	10897887	60 MILES
10867423	60 MILES						

**Job Hours**

Date	On Location Hours	Operating Hours	Date	On Location Hours	Operating Hours	Date	On Location Hours	Operating Hours
12/29/08	13	4						

**TOTAL**

Total is the sum of each column separately

**Job****Job Times**

Formation Name	Date	Time	Time Zone
Formation Depth (MD) Top 0 Bottom 1158	29 - Dec - 2008	03:00	MST
Form Type BHST	29 - Dec - 2008	07:30	MST
Job depth MD 1115. ft Job Depth TVD 1158. ft	29 - Dec - 2008	17:06	MST
Water Depth Wk Ht Above Floor 5. ft	29 - Dec - 2008	18:00	MST
Perforation Depth (MD) From To	29 - Dec - 2008	20:00	MST

**Well Data**

Description	New / Used	Max pressure psig	Size in	ID in	Weight lbm/ft	Thread	Grade	Top MD ft	Bottom MD ft	Top TVD ft	Bottom TVD ft
OPEN HOLE				13.5					1158.		1158.
SURFACE CASING	NEW		9.625	9.001	32.3		H-40		1115.99		1115.99

**Sales/Rental/3<sup>rd</sup> Party (HES)**

Description	Qty	Qty uom	Depth	Supplier
PLUG,CMTG,TOP,9 5/8,HWE,8.16 MIN/9.06 MA	1	EA		

**Tools and Accessories**

Type	Size	Qty	Make	Depth	Type	Size	Qty	Make	Depth	Type	Size	Qty	Make
Guide Shoe					Packer					Top Plug	9.625	1	
Float Shoe					Bridge Plug					Bottom Plug			
Float Collar					Retainer					SSR plug set			
Insert Float										Plug Container	9.625	1	
Stage Tool										Centralizers			

**Miscellaneous Materials**

Gelling Agt	Conc	Surfactant	Conc	Acid Type	Qty	Conc	%
Treatment Fld	Conc	Inhibitor	Conc	Sand Type	Size	Qty	

Sold To #: 300721

Ship To #: 300721

Quote #:

Sales Order #:

6395370

SUMMIT Version: 7.20.130

Monday, December 29, 2008 06:39:00

**HALLIBURTON**

***Cementing Job Log***

Sold To # : 300721

Ship To # :300721

Quote # :

Sales Order # :

6395370

SUMMIT Version: 7.20.130

Monday, December 29, 2008 06:39:00

# HALLIBURTON

## Cementing Job Log

Fluid Data									
Stage/Plug #: 1									
Fluid #	Stage Type	Fluid Name	Qty	Qty uom	Mixing Density lbm/gal	Yield ft <sup>3</sup> /sk	Mix Fluid Gal/sk	Rate bbl/min	Total Mix Fluid Gal/sk
1	H2O SPACER		30	bbl	8.33	.0	.0	8	
2	LEAD CEMENT	VERSACEM (TM) SYSTEM (452010)	170	sacks	12.3	2.38	13.75	8	13.75
3	TAIL CEMENT	VERSACEM (TM) SYSTEM (452010)	175	sacks	12.8	2.11	11.75	8	11.75
4	H2O DISPLACEMENT		84.6	bbl	8.33	.0	.0	10	
Calculated Values		Pressures		Volumes					
Displacement	84.6	Shut In: Instant		Lost Returns	NONE	Cement Slurry	137.9	Pad	
Top Of Cement	SURFACE	5 Min		Cement Returns	40	Actual Displacement	84.6	Treatment	
Frac Gradient		15 Min		Spacers	30	Load and Breakdown		Total Job	242.5
Rates									
Circulating		Mixing	8	Displacement	10	Avg. Job	9		
Cement Left In Pipe	Amount	40.04 ft	Reason	Shoe Joint					
Frac Ring # 1 @	ID	Frac ring # 2 @	ID	Frac Ring # 3 @	ID	Frac Ring # 4 @	ID		
The Information Stated Herein Is Correct				Customer Representative Signature					

Sold To # : 300721

Ship To # : 300721

Quote # :

Sales Order # : 6395370

SUMMIT Version: 7.20.130

Monday, December 29, 2008 06:39:00

# HALLIBURTON

## Cementing Job Log

*The Road to Excellence Starts with Safety*

Sold To #: 300721		Ship To #: 300721		Quote #:		Sales Order #: 6395370	
Customer: WILLIAMS PRODUCTION RMT INC EBUSINE				Customer Rep: DUNIHO, AL			
Well Name: SG			Well #: 431-32			API/UWI #: 05-045-17200	
Field: RULISON		City (SAP): PARACHUTE		County/Parish: Garfield		State: Colorado	
Legal Description:							
Lat: N 39.397 deg. OR N 39 deg. 23 min. 50.64 secs.				Long: W 108.131 deg. OR W -109 deg. 52 min. 9.109 secs.			
Contractor: CYCLONE 30			Rig/Platform Name/Num: CYCLONE30				
Job Purpose: Cement Surface Casing						Ticket Amount:	
Well Type: Development Well			Job Type: Cement Surface Casing				
Sales Person: KOHL, KYLE			Srvc Supervisor: GALLEGOS, JASON			MBU ID Emp #: 386647	

Activity Description	Date/Time	Cht #	Rate bbl/ min	Volume bbl		Pressure psig		Comments
				Stage	Total	Tubing	Casing	
Call Out	12/29/2008 03:00							
Depart Yard Safety Meeting	12/29/2008 04:45							ATTENDED BY ENTIRE HES CREW
Crew Leave Yard	12/29/2008 05:00							
Arrive At Loc	12/29/2008 07:00							CASING CREW RUNNING CASING
Assessment Of Location Safety Meeting	12/29/2008 07:30							ATTENDED BY ENTIRE HES CREW
Other	12/29/2008 15:00							SPOT EQUIPMENT
Pre-Rig Up Safety Meeting	12/29/2008 15:20							ATTENDED BY ENTIRE HES CREW
Rig-Up Equipment	12/29/2008 15:30							
Pre-Job Safety Meeting	12/29/2008 16:30							ATTENDED BY ENTIRE HES CREW
Start Job	12/29/2008 17:06							TP 1114.99', TD 1158', SJ 40.04', MW 9.5#, CASING 9 5/8" 32.3# H40, HOLE 13 1/2"
Test Lines	12/29/2008 17:07		2	2			3000. 0	PRESSURE HELD
Pump Spacer 1	12/29/2008 17:08		8	20			230.0	FRESH WATER
Pump Lead Cement	12/29/2008 17:16		8	72.1			290.0	170 SACKS, MIXED @ 12.3 PPG, 2.38 YIELD, 13.75 GAL/SK
Pump Tail Cement	12/29/2008 17:27		8	65.8			260.0	175 SACKS MIXED @ 12.8 PPG, 2.11 YIELD, 11.75 GAL/SK
Shutdown	12/29/2008 17:36							

Sold To #: 300721      Ship To #: 300721      Quote #:      Sales Order #: 6395370

SUMMIT Version: 7.20.130

Monday, December 29, 2008 06:39:00

# HALLIBURTON

## Cementing Job Log

Activity Description	Date/Time	Cht #	Rate bbl/ min	Volume bbl		Pressure psig		Comments
				Stage	Total	Tubing	Casing	
Drop Plug	12/29/2008 17:38							COMPANY REP VERIFIED PLUG LAUNCHED
Pump Displacement	12/29/2008 17:39		10				360.0	FRESH WATER
Slow Rate	12/29/2008 17:51		2	74			250.0	
Bump Plug	12/29/2008 17:56		2	84.6			290.0	PRESSURED UP TO 720 PSI
Check Floats	12/29/2008 17:59							FLOATS HELD
End Job	12/29/2008 18:00							PIPE WAS NOT MOVED DURING JOB. GOOD CIRCULATION THROUGHOUT JOB.40 BBLs OF CEMENT TO SURFACE.
Post-Job Safety Meeting (Pre Rig-Down)	12/29/2008 18:10							ATTENDED BY ENTIRE HES CREW
Rig-Down Equipment	12/29/2008 18:25							
Depart Location Safety Meeting	12/29/2008 19:50							ATTENDED BY ENTIRE HES CREW
Crew Leave Location	12/29/2008 20:00							THANK YOU FOR USING HALLIBURTON CEMENT, JASON GALLEGOS AND CREW

X

Sold To # : 300721

Ship To # :300721

Quote # :

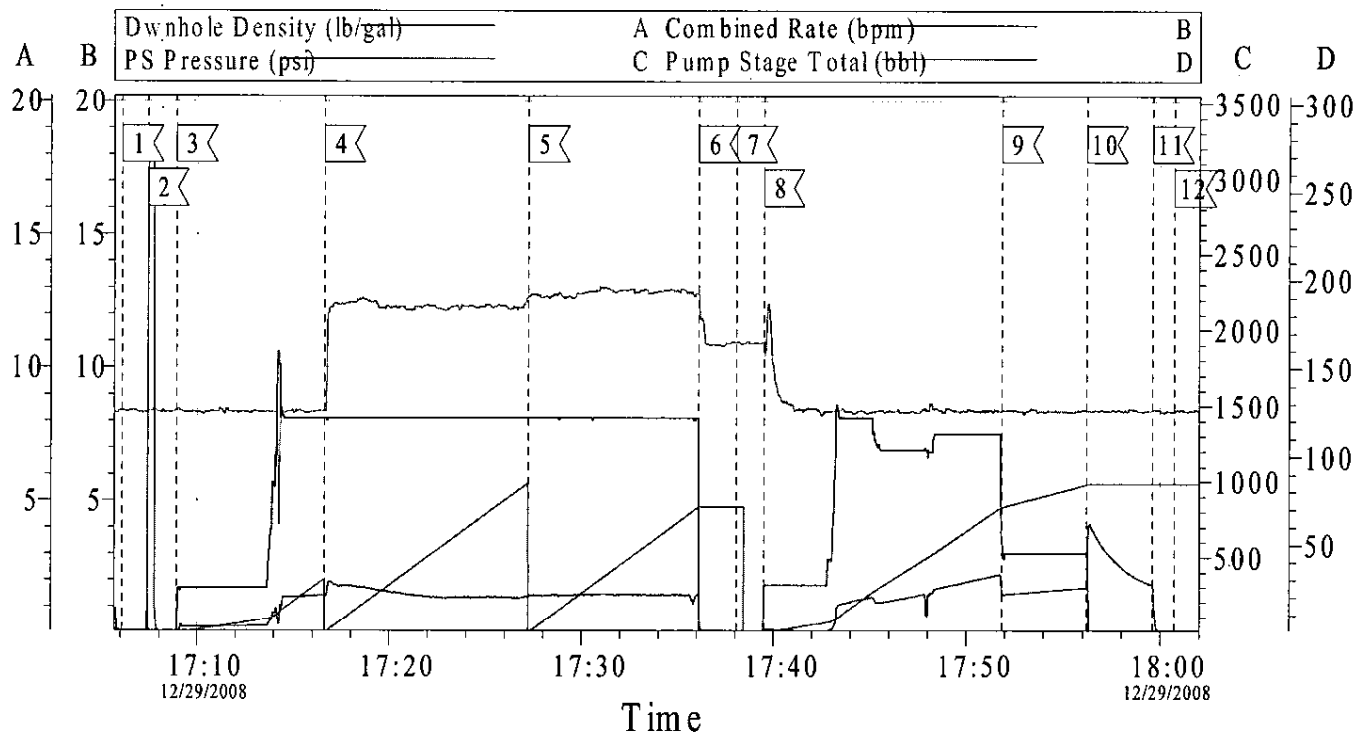
Sales Order # : 6395370

SUMMIT Version: 7.20.130

Monday, December 29, 2008 06:39:00

# WILLIAMS PRODUCTION

## 9 5/8" SURFACE



### Event Log

1 START JOB	17:06:06	2 TEST LINES	17:07:25	3 H2O SPACER	17:08:55
4 LEAD CEMENT	17:16:38	5 TAIL CEMENT	17:27:14	6 SHUT DOWN	17:36:06
7 DROP PLUG	17:38:04	8 H2O DISPLACEMENT	17:39:30	9 SLOW RATE	17:51:50
10 BUMP PLUG	17:56:12	11 CHECK FLOATS	17:59:36	12 END JOB	18:00:45

Customer: WILLIAMS PRODUCTION	Job Date: 12/29/08	Ticket #: 6395370	HALLIBURTON
Well Name: SG	Well #: 431-32	ADC Used: YES	TG Version G3.4.
Pump Truck/Operator: RITE 12/TROY ANGLESTEIN	Company Rep: L DUNIHO	Cementer: JASON GALLEGOS	07-Jul-09 10:46