

BONANZA CREEK OIL COMPANY

Location: COLORADO Slot: SLOT#01 NORTH PLATTE Y-U-13HC (619°FSL & 443°FEL, SEC.13)
Field: WELD COUNTY Well: NORTH PLATTE Y-U-13HC
Facility: SEC.13-T05N-R63W Wellbore: NORTH PLATTE Y-U-13HC PWB

Plot reference wellpath is NORTH PLATTE Y-U-13HC PWP (REV-A.0)

True vertical depths are referenced to XTREME 22 (17KB) (RKB)	Grid System: NAD83 / Lambert Colorado SP, Northern Zone (501), US feet
Measured depths are referenced to XTREME 22 (17KB) (RKB)	North Reference: True north
XTREME 22 (17KB) (RKB) to Mean Sea Level: 4614 feet	Scale: True distance
Mean Sea Level to Mud line (At Slot: SLOT#01 NORTH PLATTE Y-U-13HC (619°FSL & 443°FEL, SEC.13)): 0 feet	Depths are in feet
Coordinates are in feet referenced to Slot	Created by: ingmjamm on 1/11/2016

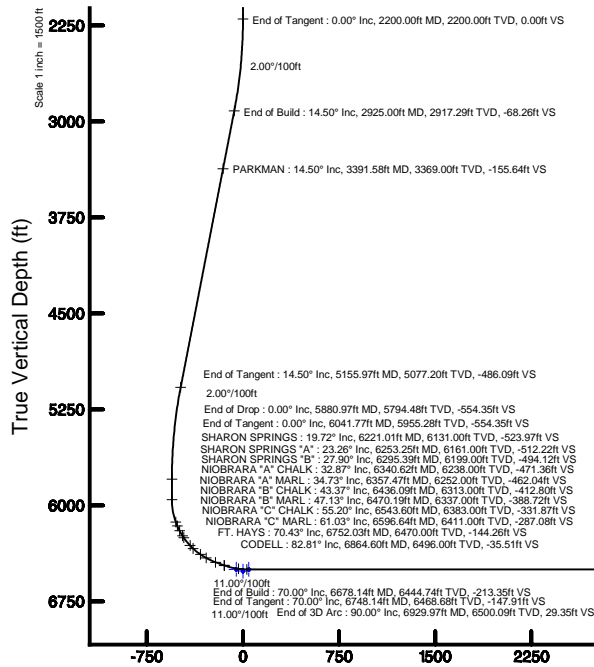
Location Information

Facility Name				Grid East (US ft)	Grid North (US ft)	Latitude	Longitude
SEC.13-T05N-R63W				3312874.958	1368185.127	40°23'36.708"N	104°22'36.084"W
Slot	Local N (ft)	Local E (ft)	Grid East (US ft)	Grid North (US ft)	Latitude	Longitude	
SLOT#01 NORTH PLATTE Y-U-13HC (619°FSL & 443°FEL, SEC.13)	0.00	0.00	3312874.958	1368185.127	40°23'36.708"N	104°22'36.084"W	
XTREME 22 (17KB) (RKB) to Mud line (At Slot: SLOT#01 NORTH PLATTE Y-U-13HC (619°FSL & 443°FEL, SEC.13))							4614ft
Mean Sea Level to Mud line (At Slot: SLOT#01 NORTH PLATTE Y-U-13HC (619°FSL & 443°FEL, SEC.13))							0ft
XTREME 22 (17KB) (RKB) to Mean Sea Level							4614ft



BGGM (1945.0 to 2017.0) Dip: 67.02° Field: 52615.6 nT
Magnetic North is 8.28 degrees East of True North (at 1/8/2016)

To correct azimuth from Magnetic to True add 8.28 degrees



Vertical Section (ft)
Azimuth 4.58° with reference 0.00 N, 0.00 E

Well Profile Data

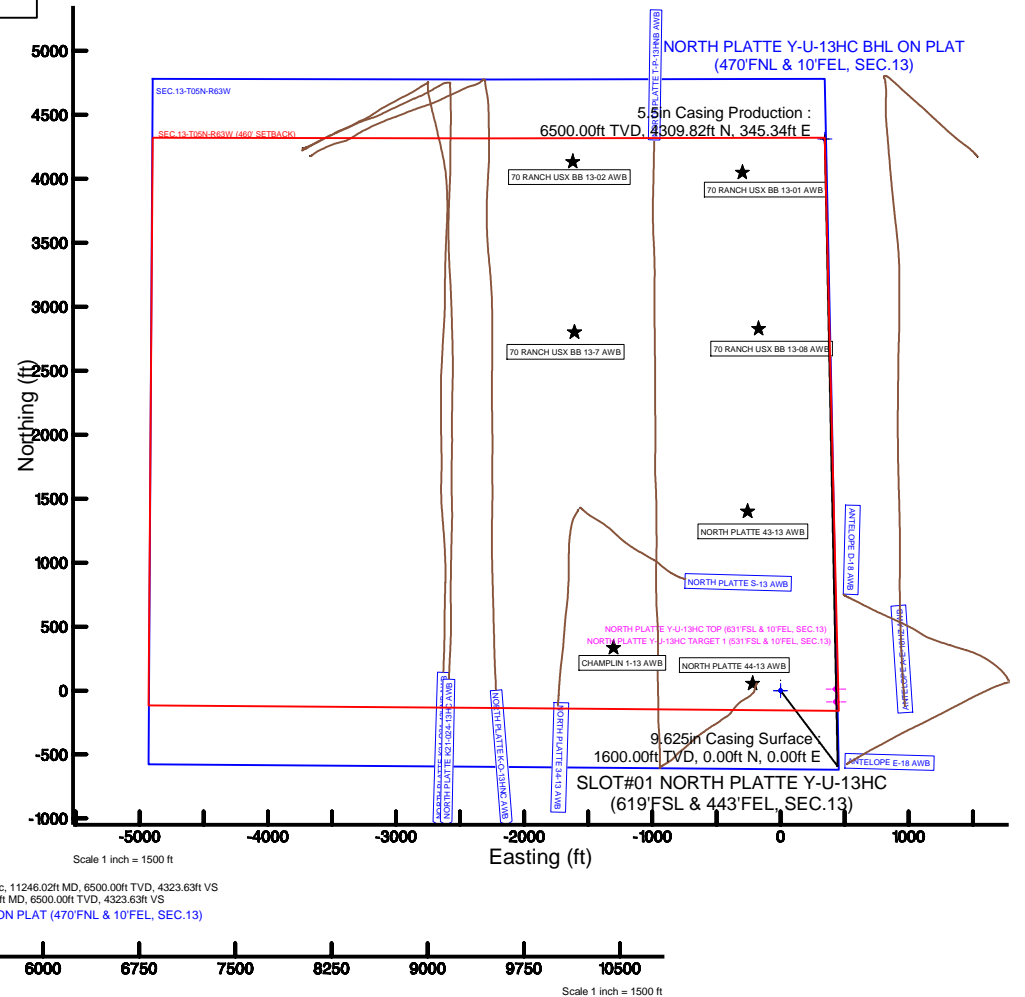
Design Comment	MD (ft)	Inc (°)	Az (°)	TVD (ft)	Local N (ft)	Local E (ft)	DLS (°/100ft)	VS (ft)
Tie On	17.00	0.000	143.000	17.00	0.00	0.00	0.00	0.00
End of Tangent	2200.00	0.000	143.000	2200.00	0.00	0.00	0.00	0.00
End of Build	2925.00	14.500	143.000	2917.29	-72.88	54.92	2.00	-68.26
End of Tangent	5155.97	14.500	143.000	5077.20	-518.99	391.08	0.00	-486.09
End of Drop	5880.97	0.000	358.823	5794.48	-591.86	446.00	2.00	-554.35
End of Tangent	6041.77	0.000	358.823	5955.28	-591.86	446.00	0.00	-554.35
End of Build	6678.14	70.000	358.823	6444.74	-249.21	438.96	11.00	-213.35
End of Tangent	6748.14	70.000	358.823	6468.68	-183.45	437.61	0.00	-147.91
End of 3D Arc	6929.97	90.001	358.824	6500.09	-5.33	433.95	11.00	29.35
End of Tangent	11246.02	90.001	358.824	6500.00	4309.82	345.34	0.00	4323.63

Survey Program

Start MD (ft)	End MD (ft)	Tool	Model	Log Name/Comment	Wellbore
17.00	11246.02	NavTrak	Custom NavTrak (MagCorr) (Rockies 0.03Gt model)		NORTH PLATTE Y-U-13HC PWB

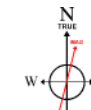
Bottom Hole Location

MD (ft)	Inc (°)	Az (°)	TVD (ft)	Local N (ft)	Local E (ft)	Grid East (US ft)	Grid North (US ft)	Latitude	Longitude
11246.02	90.001	358.824	6500.00	4309.82	345.34	3313165.66	1392498.79	40°24'19.296"N	104°22'31.620"W



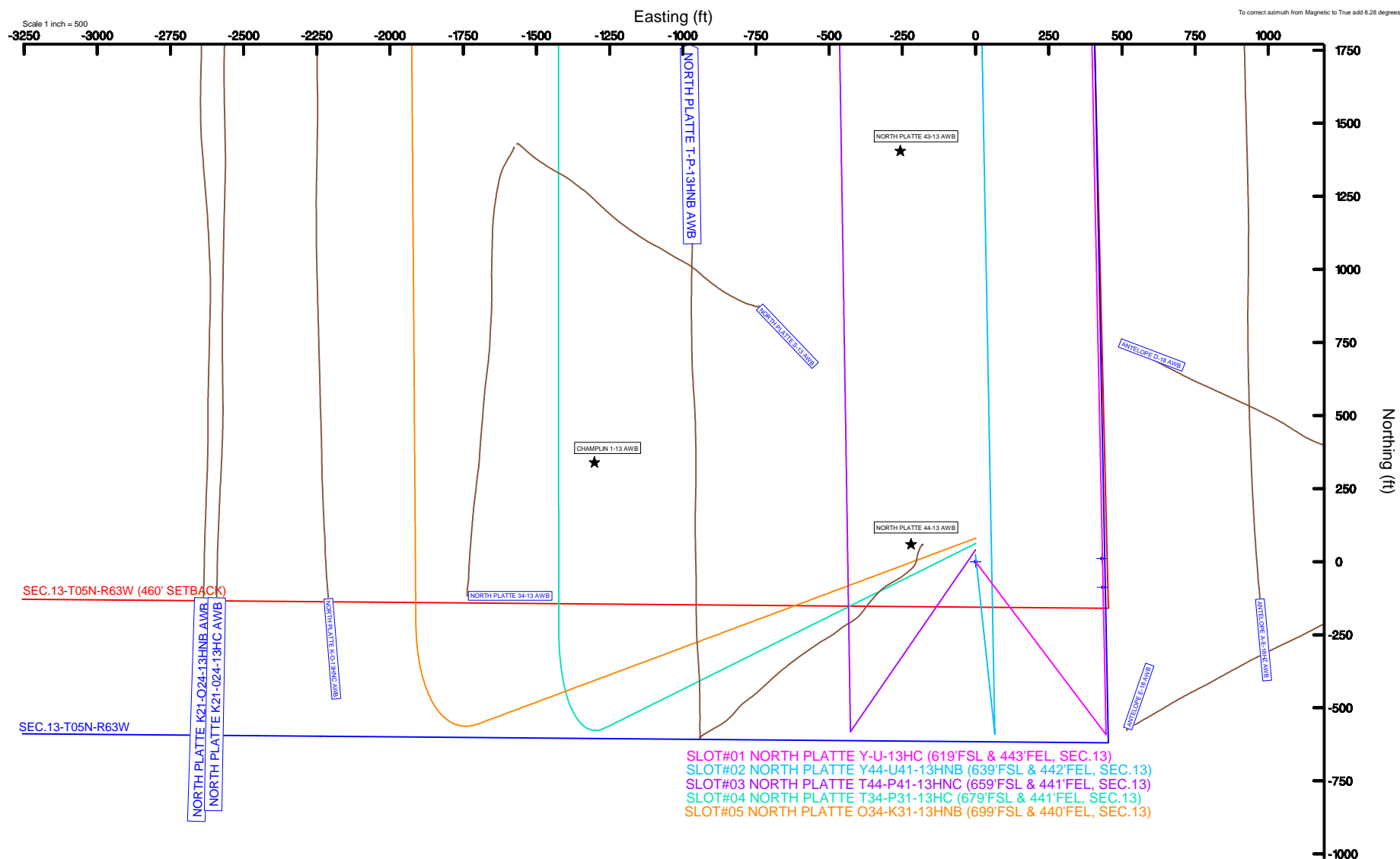
Location:	COLORADO	Slot:	SLOT#01 NORTH PLATTE Y-U-13HC (619'FSL & 443'FEL, SEC.13)
Field:	WELD COUNTY	Well:	NORTH PLATTE Y-U-13HC
Facility:	SEC.13-T05N-R63W	Wellbore:	NORTH PLATTE Y-U-13HC PWB

Plot reference wellpath is NORTH PLATTE Y-U-13HC PWP (REV-V.0)	
True vertical depths are referenced to XTREME 22 (17KB) (RKB)	Grid System: NAD83 / Lambert Colorado SP, Northern Zone (501), US feet
Measured depths are referenced to XTREME 22 (17KB) (RKB)	North Reference: True north
XTREME 22 (17KB) (RKB) to Mean Sea Level: 4614 feet	Scale: True distance
Mean Sea Level to Mud line (At Slot: SLOTH01 NORTH PLATTE Y-U-13HC (619FSL & 443FEL SEC.13): 0 feet	Depths are in feet
Coordinates are in feet referenced to:	Created by: inominiam on 1/11/2016



BGGM (1945.0 to 2017.0) Dip: 67.02° Field: 52615.6 nT
Magnetic North is 8.28 degrees East of True North (at 1/8/2016)

To correct azimuth from Magnetic to True add 8.28 degrees





Planned Wellpath Report

NORTH PLATTE Y-U-13HC PWP (REV-A.0)
Page 1 of 6



REFERENCE WELLPATH IDENTIFICATION

Operator	BONANZA CREEK OIL COMPANY	Slot	SLOT#01 NORTH PLATTE Y-U-13HC (619'FSL & 443'FEL, SEC.13)
Area	COLORADO	Well	NORTH PLATTE Y-U-13HC
Field	WELD COUNTY	Wellbore	NORTH PLATTE Y-U-13HC PWB
Facility	SEC.13-T05N-R63W		

REPORT SETUP INFORMATION

Projection System	NAD83 / Lambert Colorado SP, Northern Zone (501), US feet	Software System	WellArchitect® 4.1.1
North Reference	True	User	Ingmjmr
Scale	0.99996	Report Generated	1/11/2016 at 11:43:35 AM
Convergence at slot	0.73° East	Database/Source file	WA_DEN_Denver_Defn/NORTH_PLATTE_Y-U-13HC_PWB.xml

WELLPATH LOCATION

	Local coordinates		Grid coordinates		Geographic coordinates	
	North[ft]	East[ft]	Easting[US ft]	Northing[US ft]	Latitude	Longitude
Slot Location	0.00	0.00	3312874.96	1388185.13	40°23'36.708"N	104°22'36.084"W
Facility Reference Pt			3312874.96	1388185.13	40°23'36.708"N	104°22'36.084"W
Field Reference Pt			3335925.10	1457282.25	40°34'56.460"N	104°17'26.016"W

WELLPATH DATUM

Calculation method	Minimum curvature	XTREME 22 (17'KB) (RKB) to Facility Vertical Datum	4614.00ft
Horizontal Reference Pt	Slot	XTREME 22 (17'KB) (RKB) to Mean Sea Level	4614.00ft
Vertical Reference Pt	XTREME 22 (17'KB) (RKB)	XTREME 22 (17'KB) (RKB) to Mud Line at Slot (SLOT#01 NORTH PLATTE Y-U-13HC (619'FSL & 443'FEL, SEC.13))	4614.00ft
MD Reference Pt	XTREME 22 (17'KB) (RKB)	Section Origin	N 0.00, E 0.00 ft
Field Vertical Reference	Mean Sea Level	Section Azimuth	4.58°



Planned Wellpath Report

NORTH PLATTE Y-U-13HC PWP (REV-A.0)

Page 2 of 6



REFERENCE WELLPATH IDENTIFICATION			
Operator	BONANZA CREEK OIL COMPANY	Slot	SLOT#01 NORTH PLATTE Y-U-13HC (619'FSL & 443'FEL, SEC.13)
Area	COLORADO	Well	NORTH PLATTE Y-U-13HC
Field	WELD COUNTY	Wellbore	NORTH PLATTE Y-U-13HC PWB
Facility	SEC.13-T05N-R63W		

WELLPATH DATA (135 stations) † = interpolated/extrapolated station								
MD [ft]	Inclination [°]	Azimuth [°]	TVD [ft]	Vert Sect [ft]	North [ft]	East [ft]	DLS [°/100ft]	Comments
0.00†	0.000	143.000	0.00	0.00	0.00	0.00	0.00	
17.00	0.000	143.000	17.00	0.00	0.00	0.00	0.00	Tie On
117.00†	0.000	143.000	117.00	0.00	0.00	0.00	0.00	
217.00†	0.000	143.000	217.00	0.00	0.00	0.00	0.00	
317.00†	0.000	143.000	317.00	0.00	0.00	0.00	0.00	
417.00†	0.000	143.000	417.00	0.00	0.00	0.00	0.00	
517.00†	0.000	143.000	517.00	0.00	0.00	0.00	0.00	
617.00†	0.000	143.000	617.00	0.00	0.00	0.00	0.00	
717.00†	0.000	143.000	717.00	0.00	0.00	0.00	0.00	
817.00†	0.000	143.000	817.00	0.00	0.00	0.00	0.00	
917.00†	0.000	143.000	917.00	0.00	0.00	0.00	0.00	
1017.00†	0.000	143.000	1017.00	0.00	0.00	0.00	0.00	
1117.00†	0.000	143.000	1117.00	0.00	0.00	0.00	0.00	
1217.00†	0.000	143.000	1217.00	0.00	0.00	0.00	0.00	
1317.00†	0.000	143.000	1317.00	0.00	0.00	0.00	0.00	
1417.00†	0.000	143.000	1417.00	0.00	0.00	0.00	0.00	
1517.00†	0.000	143.000	1517.00	0.00	0.00	0.00	0.00	
1617.00†	0.000	143.000	1617.00	0.00	0.00	0.00	0.00	
1717.00†	0.000	143.000	1717.00	0.00	0.00	0.00	0.00	
1817.00†	0.000	143.000	1817.00	0.00	0.00	0.00	0.00	
1917.00†	0.000	143.000	1917.00	0.00	0.00	0.00	0.00	
2017.00†	0.000	143.000	2017.00	0.00	0.00	0.00	0.00	
2117.00†	0.000	143.000	2117.00	0.00	0.00	0.00	0.00	
2200.00	0.000	143.000	2200.00	0.00	0.00	0.00	0.00	End of Tangent
2217.00†	0.340	143.000	2217.00	-0.04	-0.04	0.03	2.00	
2317.00†	2.340	143.000	2316.97	-1.79	-1.91	1.44	2.00	
2417.00†	4.340	143.000	2416.79	-6.14	-6.56	4.94	2.00	
2517.00†	6.340	143.000	2516.35	-13.11	-13.99	10.54	2.00	
2617.00†	8.340	143.000	2615.53	-22.66	-24.20	18.23	2.00	
2717.00†	10.340	143.000	2714.20	-34.80	-37.16	28.00	2.00	
2817.00†	12.340	143.000	2812.24	-49.51	-52.86	39.83	2.00	
2917.00†	14.340	143.000	2909.54	-66.77	-71.28	53.72	2.00	
2925.00	14.500	143.000	2917.29	-68.26	-72.88	54.92	2.00	End of Build
3017.00†	14.500	143.000	3006.36	-85.49	-91.27	68.78	0.00	
3117.00†	14.500	143.000	3103.17	-104.22	-111.27	83.85	0.00	
3217.00†	14.500	143.000	3199.98	-122.94	-131.26	98.92	0.00	
3317.00†	14.500	143.000	3296.80	-141.67	-151.26	113.98	0.00	
3391.58†	14.500	143.000	3369.00	-155.64	-166.17	125.22	0.00	PARKMAN
3417.00†	14.500	143.000	3393.61	-160.40	-171.26	129.05	0.00	
3517.00†	14.500	143.000	3490.43	-179.13	-191.25	144.12	0.00	
3617.00†	14.500	143.000	3587.24	-197.86	-211.25	159.19	0.00	
3717.00†	14.500	143.000	3684.06	-216.59	-231.25	174.26	0.00	
3817.00†	14.500	143.000	3780.87	-235.32	-251.24	189.32	0.00	
3917.00†	14.500	143.000	3877.69	-254.05	-271.24	204.39	0.00	
4017.00†	14.500	143.000	3974.50	-272.78	-291.23	219.46	0.00	



Planned Wellpath Report

NORTH PLATTE Y-U-13HC PWP (REV-A.0)

Page 3 of 6



REFERENCE WELLPATH IDENTIFICATION

Operator	BONANZA CREEK OIL COMPANY	Slot	SLOT#01 NORTH PLATTE Y-U-13HC (619'FSL & 443'FEL, SEC.13)
Area	COLORADO	Well	NORTH PLATTE Y-U-13HC
Field	WELD COUNTY	Wellbore	NORTH PLATTE Y-U-13HC PWB
Facility	SEC.13-T05N-R63W		

WELLPATH DATA (135 stations) † = interpolated/extrapolated station

MD [ft]	Inclination [°]	Azimuth [°]	TVD [ft]	Vert Sect [ft]	North [ft]	East [ft]	DLS [°/100ft]	Comments
4117.00†	14.500	143.000	4071.32	-291.50	-311.23	234.53	0.00	
4217.00†	14.500	143.000	4168.13	-310.23	-331.23	249.60	0.00	
4317.00†	14.500	143.000	4264.95	-328.96	-351.22	264.67	0.00	
4417.00†	14.500	143.000	4361.76	-347.69	-371.22	279.73	0.00	
4517.00†	14.500	143.000	4458.58	-366.42	-391.22	294.80	0.00	
4617.00†	14.500	143.000	4555.39	-385.15	-411.21	309.87	0.00	
4717.00†	14.500	143.000	4652.21	-403.88	-431.21	324.94	0.00	
4817.00†	14.500	143.000	4749.02	-422.61	-451.20	340.01	0.00	
4917.00†	14.500	143.000	4845.84	-441.33	-471.20	355.08	0.00	
5017.00†	14.500	143.000	4942.65	-460.06	-491.20	370.14	0.00	
5117.00†	14.500	143.000	5039.47	-478.79	-511.19	385.21	0.00	
5155.97	14.500	143.000	5077.20	-486.09	-518.99	391.08	0.00	End of Tangent
5217.00†	13.279	143.000	5136.44	-497.05	-530.69	399.90	2.00	
5317.00†	11.279	143.000	5234.15	-512.96	-547.67	412.70	2.00	
5417.00†	9.279	143.000	5332.54	-526.30	-561.92	423.44	2.00	
5517.00†	7.279	143.000	5431.49	-537.08	-573.42	432.10	2.00	
5617.00†	5.279	143.000	5530.88	-545.26	-582.16	438.69	2.00	
5717.00†	3.279	143.000	5630.60	-550.84	-588.12	443.18	2.00	
5817.00†	1.279	143.000	5730.52	-553.81	-591.29	445.57	2.00	
5880.97	0.000	358.823	5794.48	-554.35	-591.86	446.00	2.00	End of Drop
5917.00†	0.000	358.823	5830.51	-554.35	-591.86	446.00	0.00	
6017.00†	0.000	358.823	5930.51	-554.35	-591.86	446.00	0.00	
6041.77	0.000	358.823	5955.28	-554.35	-591.86	446.00	0.00	End of Tangent
6117.00†	8.275	358.823	6030.25	-548.95	-586.44	445.89	11.00	
6217.00†	19.275	358.823	6127.22	-525.30	-562.67	445.40	11.00	
6221.01†	19.716	358.823	6131.00	-523.97	-561.33	445.37	11.00	SHARON SPRINGS
6253.25†	23.263	358.823	6161.00	-512.22	-549.53	445.13	11.00	SHARON SPRINGS "A"
6295.39†	27.898	358.823	6199.00	-494.12	-531.34	444.76	11.00	SHARON SPRINGS "B"
6317.00†	30.275	358.823	6217.88	-483.67	-520.84	444.54	11.00	
6340.62†	32.873	358.823	6238.00	-471.36	-508.48	444.29	11.00	NIOBRARA "A" CHALK
6357.47†	34.726	358.823	6252.00	-462.04	-499.11	444.09	11.00	NIOBRARA "A" MARL
6417.00†	41.275	358.823	6298.89	-425.59	-462.48	443.34	11.00	
6436.09†	43.375	358.823	6313.00	-412.80	-449.63	443.08	11.00	NIOBRARA "B" CHALK
6470.19†	47.125	358.823	6337.00	-388.72	-425.42	442.58	11.00	NIOBRARA "B" MARL
6517.00†	52.275	358.823	6367.27	-353.20	-389.74	441.85	11.00	
6543.60†	55.201	358.823	6383.00	-331.87	-368.30	441.41	11.00	NIOBRARA "C" CHALK
6596.64†	61.035	358.823	6411.00	-287.08	-323.29	440.48	11.00	NIOBRARA "C" MARL
6617.00†	63.275	358.823	6420.51	-269.16	-305.29	440.11	11.00	
6678.14	70.000	358.823	6444.74	-213.35	-249.21	438.96	11.00	End of Build
6717.00†	70.000	358.823	6458.03	-177.02	-212.70	438.21	0.00	
6748.14	70.000	358.823	6468.68	-147.91	-183.45	437.61	0.00	End of Tangent
6752.03†	70.428	358.823	6470.00	-144.26	-179.79	437.53	11.00	FT. HAYS
6817.00†	77.575	358.823	6487.90	-82.16	-117.38	436.25	11.00	
6864.60†	82.811	358.823	6496.00	-35.51	-70.51	435.29	11.00	CODELL
6917.00†	88.575	358.824	6499.93	16.45	-18.29	434.22	11.00	



Planned Wellpath Report

NORTH PLATTE Y-U-13HC PWP (REV-A.0)

Page 4 of 6



REFERENCE WELLPATH IDENTIFICATION

Operator	BONANZA CREEK OIL COMPANY	Slot	SLOT#01 NORTH PLATTE Y-U-13HC (619'FSL & 443'FEL, SEC.13)
Area	COLORADO	Well	NORTH PLATTE Y-U-13HC
Field	WELD COUNTY	Wellbore	NORTH PLATTE Y-U-13HC PWB
Facility	SEC.13-T05N-R63W		

WELLPATH DATA (135 stations) † = interpolated/extrapolated station

MD [ft]	Inclination [°]	Azimuth [°]	TVD [ft]	Vert Sect [ft]	North [ft]	East [ft]	DLS [°/100ft]	Comments
6929.97	90.001	358.824	6500.09	29.35	-5.33	433.95	11.00	End of 3D Arc
7017.00†	90.001	358.824	6500.09	115.95	81.69	432.16	0.00	
7117.00†	90.001	358.824	6500.09	215.44	181.67	430.11	0.00	
7217.00†	90.001	358.824	6500.09	314.94	281.65	428.06	0.00	
7317.00†	90.001	358.824	6500.09	414.43	381.63	426.00	0.00	
7417.00†	90.001	358.824	6500.08	513.93	481.61	423.95	0.00	
7517.00†	90.001	358.824	6500.08	613.43	581.59	421.90	0.00	
7617.00†	90.001	358.824	6500.08	712.92	681.56	419.85	0.00	
7717.00†	90.001	358.824	6500.08	812.42	781.54	417.79	0.00	
7817.00†	90.001	358.824	6500.08	911.91	881.52	415.74	0.00	
7917.00†	90.001	358.824	6500.07	1011.41	981.50	413.69	0.00	
8017.00†	90.001	358.824	6500.07	1110.90	1081.48	411.63	0.00	
8117.00†	90.001	358.824	6500.07	1210.40	1181.46	409.58	0.00	
8217.00†	90.001	358.824	6500.07	1309.89	1281.44	407.53	0.00	
8317.00†	90.001	358.824	6500.06	1409.39	1381.42	405.47	0.00	
8417.00†	90.001	358.824	6500.06	1508.89	1481.40	403.42	0.00	
8517.00†	90.001	358.824	6500.06	1608.38	1581.37	401.37	0.00	
8617.00†	90.001	358.824	6500.06	1707.88	1681.35	399.31	0.00	
8717.00†	90.001	358.824	6500.06	1807.37	1781.33	397.26	0.00	
8817.00†	90.001	358.824	6500.05	1906.87	1881.31	395.21	0.00	
8917.00†	90.001	358.824	6500.05	2006.36	1981.29	393.16	0.00	
9017.00†	90.001	358.824	6500.05	2105.86	2081.27	391.10	0.00	
9117.00†	90.001	358.824	6500.05	2205.35	2181.25	389.05	0.00	
9217.00†	90.001	358.824	6500.04	2304.85	2281.23	387.00	0.00	
9317.00†	90.001	358.824	6500.04	2404.34	2381.21	384.94	0.00	
9417.00†	90.001	358.824	6500.04	2503.84	2481.18	382.89	0.00	
9517.00†	90.001	358.824	6500.04	2603.34	2581.16	380.84	0.00	
9617.00†	90.001	358.824	6500.04	2702.83	2681.14	378.78	0.00	
9717.00†	90.001	358.824	6500.03	2802.33	2781.12	376.73	0.00	
9817.00†	90.001	358.824	6500.03	2901.82	2881.10	374.68	0.00	
9917.00†	90.001	358.824	6500.03	3001.32	2981.08	372.63	0.00	
10017.00†	90.001	358.824	6500.03	3100.81	3081.06	370.57	0.00	
10117.00†	90.001	358.824	6500.02	3200.31	3181.04	368.52	0.00	
10217.00†	90.001	358.824	6500.02	3299.80	3281.02	366.47	0.00	
10317.00†	90.001	358.824	6500.02	3399.30	3381.00	364.41	0.00	
10417.00†	90.001	358.824	6500.02	3498.80	3480.97	362.36	0.00	
10517.00†	90.001	358.824	6500.02	3598.29	3580.95	360.31	0.00	
10617.00†	90.001	358.824	6500.01	3697.79	3680.93	358.25	0.00	
10717.00†	90.001	358.824	6500.01	3797.28	3780.91	356.20	0.00	
10817.00†	90.001	358.824	6500.01	3896.78	3880.89	354.15	0.00	
10917.00†	90.001	358.824	6500.01	3996.27	3980.87	352.09	0.00	
11017.00†	90.001	358.824	6500.01	4095.77	4080.85	350.04	0.00	
11117.00†	90.001	358.824	6500.00	4195.26	4180.83	347.99	0.00	
11217.00†	90.001	358.824	6500.00	4294.76	4280.81	345.94	0.00	
11246.02	90.001	358.824	6500.00†	4323.63	4309.82	345.34	0.00	End of Tangent



Planned Wellpath Report

NORTH PLATTE Y-U-13HC PWP (REV-A.0)

Page 5 of 6



REFERENCE WELLPATH IDENTIFICATION

Operator	BONANZA CREEK OIL COMPANY	Slot	SLOT#01 NORTH PLATTE Y-U-13HC (619'FSL & 443'FEL, SEC.13)
Area	COLORADO	Well	NORTH PLATTE Y-U-13HC
Field	WELD COUNTY	Wellbore	NORTH PLATTE Y-U-13HC PWB
Facility	SEC.13-T05N-R63W		

HOLE & CASING SECTIONS -

Ref Wellbore: NORTH PLATTE Y-U-13HC PWB Ref Wellpath: NORTH PLATTE Y-U-13HC PWP (REV-A.0)

String/Diameter	Start MD [ft]	End MD [ft]	Interval [ft]	Start TVD [ft]	End TVD [ft]	Start N/S [ft]	Start E/W [ft]	End N/S [ft]	End E/W [ft]
13.5in Open Hole	17.00	1600.00	1583.00	17.00	1600.00	0.00	0.00	0.00	0.00
9.625in Casing Surface	17.00	1600.00	1583.00	17.00	1600.00	0.00	0.00	0.00	0.00
8.75in Open Hole	1600.00	11246.02	9646.02	1600.00	6500.00	0.00	0.00	4309.82	345.34
5.5in Casing Production	17.00	11246.02	11229.02	17.00	6500.00	0.00	0.00	4309.82	345.34

TARGETS

Name	MD [ft]	TVD [ft]	North [ft]	East [ft]	Grid East [US ft]	Grid North [US ft]	Latitude	Longitude	Shape
SEC.13-T05N-R63W		0.00	0.00	0.00	3312874.96	1388185.13	40°23'36.708"N	104°22'36.084"W	polygon
1) NORTH PLATTE Y-U-13HC BHL ON PLAT (470'FNL & 10'FEL, SEC.13)	11246.02	6500.00	4309.82	345.34	3313165.66	1392498.79	40°24'19.296"N	104°22'31.620"W	point
NORTH PLATTE Y-U-13HC TARGET 1 (531'FSL & 10'FEL, SEC.13)		6500.00	-87.43	434.54	3313310.55	1388103.21	40°23'35.844"N	104°22'30.468"W	point
NORTH PLATTE Y-U-13HC TOP (631'FSL & 10'FEL, SEC.13)		6500.00	10.93	431.75	3313306.52	1388201.53	40°23'36.816"N	104°22'30.504"W	point
SEC.13-T05N-R63W (460' SETBACK)		6514.00	0.00	0.00	3312874.96	1388185.13	40°23'36.708"N	104°22'36.084"W	polygon

SURVEY PROGRAM -

Ref Wellbore: NORTH PLATTE Y-U-13HC PWB Ref Wellpath: NORTH PLATTE Y-U-13HC PWP (REV-A.0)

Start MD [ft]	End MD [ft]	Positional Uncertainty Model	Log Name/Comment	Wellbore
17.00	11246.02	Custom NaviTrak (MagCorr) (Rockies 0.03Gt model)		NORTH PLATTE Y-U-13HC PWB



Planned Wellpath Report

NORTH PLATTE Y-U-13HC PWP (REV-A.0)

Page 6 of 6



REFERENCE WELLPATH IDENTIFICATION

Operator	BONANZA CREEK OIL COMPANY	Slot	SLOT#01 NORTH PLATTE Y-U-13HC (619'FSL & 443'FEL, SEC.13)
Area	COLORADO	Well	NORTH PLATTE Y-U-13HC
Field	WELD COUNTY	Wellbore	NORTH PLATTE Y-U-13HC PWB
Facility	SEC.13-T05N-R63W		

WELLPATH COMMENTS

MD [ft]	Inclination [°]	Azimuth [°]	TVD [ft]	Comment
3391.58	14.500	143.000	3369.00	PARKMAN
6221.01	19.716	358.823	6131.00	SHARON SPRINGS
6253.25	23.263	358.823	6161.00	SHARON SPRINGS "A"
6295.39	27.898	358.823	6199.00	SHARON SPRINGS "B"
6340.62	32.873	358.823	6238.00	NIOBRARA "A" CHALK
6357.47	34.726	358.823	6252.00	NIOBRARA "A" MARL
6436.09	43.375	358.823	6313.00	NIOBRARA "B" CHALK
6470.19	47.125	358.823	6337.00	NIOBRARA "B" MARL
6543.60	55.201	358.823	6383.00	NIOBRARA "C" CHALK
6596.64	61.035	358.823	6411.00	NIOBRARA "C" MARL
6752.03	70.428	358.823	6470.00	FT. HAYS
6864.60	82.811	358.823	6496.00	CODELL

DESIGN COMMENTS

MD [ft]	Inclination [°]	Azimuth [°]	TVD [ft]	Comment
17.00	0.000	143.000	17.00	Tie On
2200.00	0.000	143.000	2200.00	End of Tangent
2925.00	14.500	143.000	2917.29	End of Build
5155.97	14.500	143.000	5077.20	End of Tangent
5880.97	0.000	358.823	5794.48	End of Drop
6041.77	0.000	358.823	5955.28	End of Tangent
6678.14	70.000	358.823	6444.74	End of Build
6748.14	70.000	358.823	6468.68	End of Tangent
6929.97	90.001	358.824	6500.09	End of 3D Arc
11246.02	90.001	358.824	6500.00	End of Tangent