

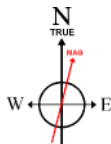
Location:	COLORADO	Slot:	SLOT#03 NORTH PLATTE T44-P41-13HNC (659'FSL & 441'FEL, SEC.13)
Field:	WELD COUNTY	Well:	NORTH PLATTE T44-P41-13HNC
Facility:	SEC.13-T05N-R63W	Wellbore:	NORTH PLATTE T44-P41-13HNC PWB

Location:	COLORADO	Slot:	SLOT#03 NORTH PLATTE T44-P41-13HNC (659'FSL & 441'FEL, SEC.13)
Field:	WELD COUNTY	Well:	NORTH PLATTE T44-P41-13HNC
Facility:	SEC.13-T05N-R63W	Wellbore:	NORTH PLATTE T44-P41-13HNC PWB

Plot reference wellpath is NORTH PLATTE T44-P41-13HNC PWP (REV-A.0)

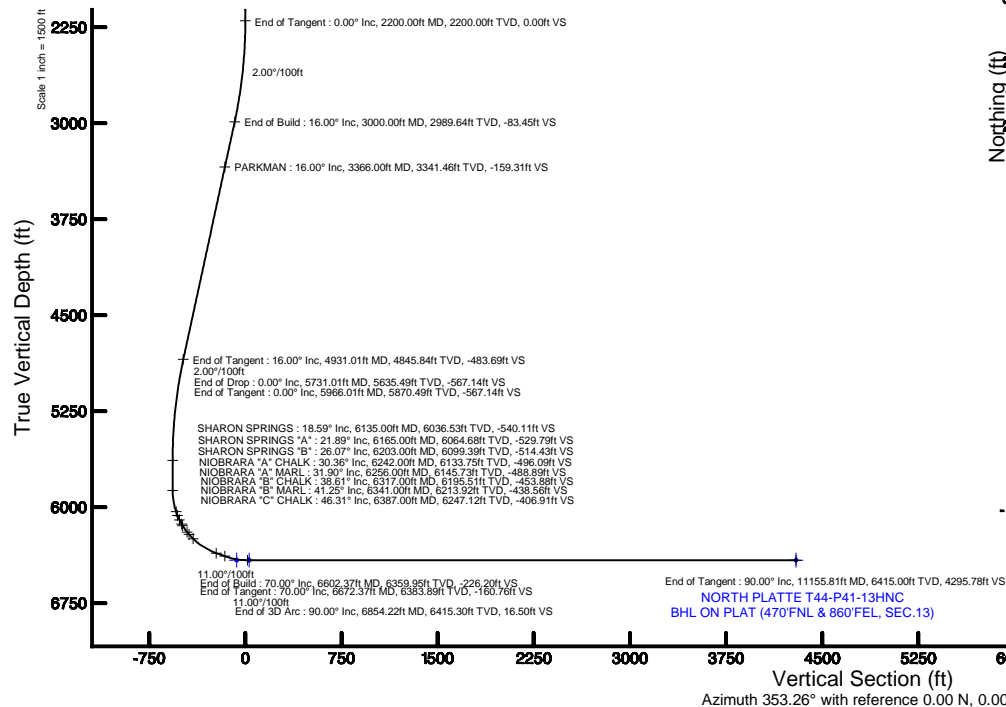
True vertical depths are referenced to XTREME 22 (17KB) (RKB)	Grid System: NAD83 / Lambert Colorado SP, Northern Zone (501), US feet
Measured depths are referenced to XTREME 22 (17KB) (RKB)	North Reference: True north
XTREME 22 (17KB) (RKB) to Mean Sea Level: 4614 feet	Scale: True distance
Mean Sea Level to Mud line (At Slot: SLOT#03 NORTH PLATTE T44-P41-13HNC (859'FSL & 441'FEL, SEC.13)): 0 feet	Depths are in feet
Coordinates are in feet referenced to Slot	Created by: ingmjmr on 1/11/2016

Facility Name			Grid East (US ft)	Grid North (US ft)	Latitude	Longitude
SEC.13-T09N-R63W			3312874.958	1388185.127	40°23'36.708"N	104°22'36.084"W
Spot	Local N (ft)	Local E (ft)	Grid East (US ft)	Grid North (US ft)	Latitude	Longitude
SLOT#03 NORTH PLATTE T44-P41-13#NC (659FSL & 441FEL, SEC.13)	40.07	0.00	3312874.450	1388225.197	40°23'37.104"N	104°22'36.084"W
XTREME 22 (17KB) (RK8) to Mud line (At Slot: SLOT#03 NORTH PLATTE T44-P41-13#NC (659FSL & 441FEL, SEC.13))					4614ft	
Mean Sea Level to Mud line (At Slot: SLOT#03 NORTH PLATTE T44-P41-13#NC (659FSL & 441FEL, SEC.13))					0ft	
XTREME 22 (17KB) (RK8) to Mean Sea Level					4614ft	



Magnetic North is 8.28 degrees East of True North (at 1/8/2016)

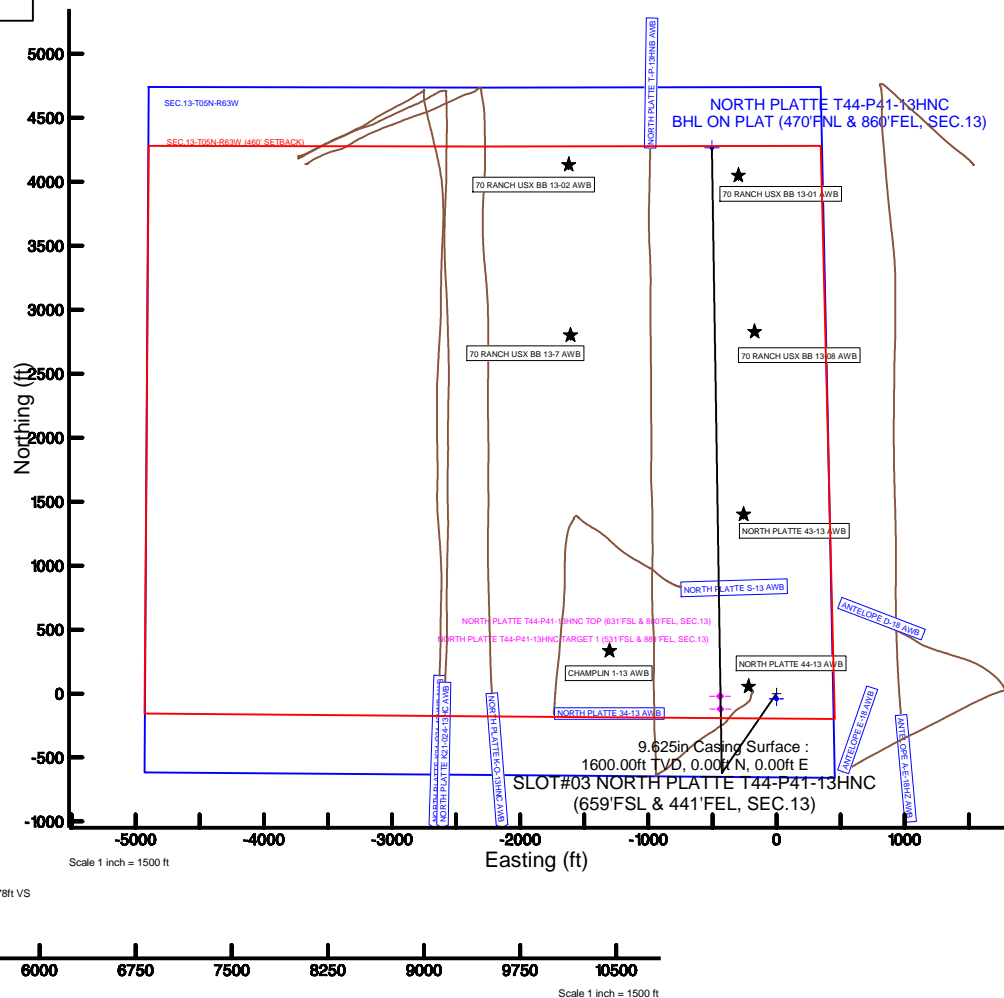
To correct azimuth from Magnetic to True add 8.28 degrees



Design Comment	MD (ft)	Inc (°)	Az (°)	TVD (ft)	Local N (ft)	Local E (ft)	DLS (°/100ft)	VS (ft)
Tie On	17.00	0.000	214.500	17.00	0.00	0.00	0.00	0.00
End of Tangent	2200.00	0.000	214.500	2200.00	0.00	0.00	0.00	0.00
End of Build	3000.00	16.000	214.500	2989.64	-91.46	-62.86	2.00	-83.45
End of Tangent	4931.01	16.000	214.500	4845.84	-530.11	-364.33	0.00	-483.69
End of Drop	5731.01	0.000	359.099	5635.49	-621.57	-427.19	2.00	-567.14
End of Tangent	5966.01	0.000	359.099	5870.49	-621.57	-427.19	0.00	-567.14
End of Build	6602.37	70.000	359.099	6359.95	-278.89	-432.58	11.00	-226.20
End of Tangent	6672.37	70.000	359.099	6383.89	-213.11	-433.61	0.00	-160.76
End of 3D Arc	6854.22	90.004	359.099	6415.30	-34.95	-436.42	11.00	16.50
End of Tangent	11155.81	90.004	359.099	6415.00	4266.10	-504.09	0.00	4295.78

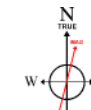
Start MD (ft)	End MD (ft)	Tool	Model	Log Name/Comment	Wellbore
17.00	11155.81	NaviTrak	Custom NaviTrak (MagCorr) (Rockies 0.03Gt model)		NORTH PLATTE T44-P41-13HC PWB

MD (ft)	Inc (°)	Az (°)	TVD (ft)	Local N (ft)	Local E (ft)	Grid East (US ft)	Grid North (US ft)	Latitude	Longitude
11155.81	90.004	359.099	6415.00	4266.10	-504.09	3312316.39	1392484.39	40°24'19.260"N	104°22'42.600"W



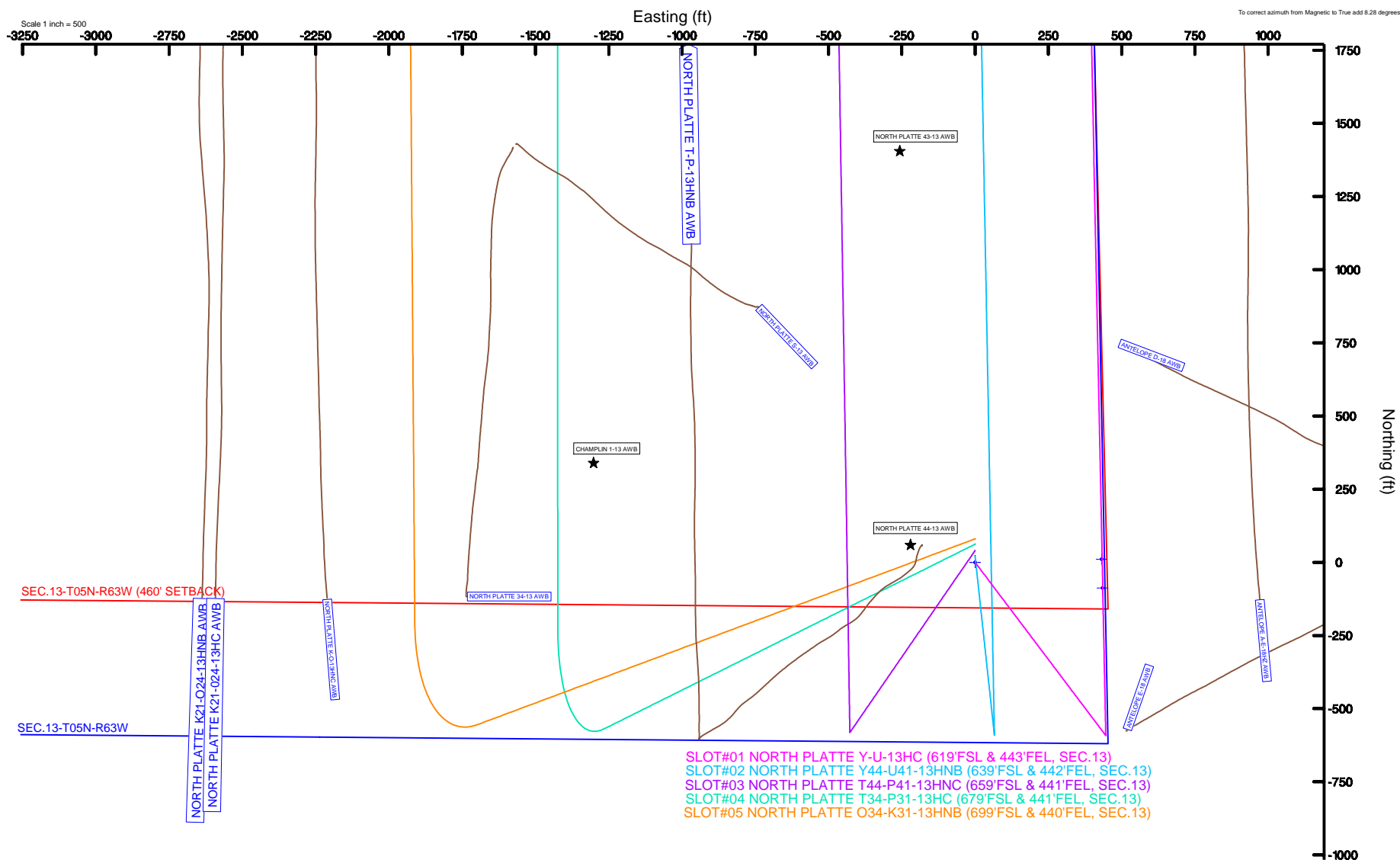
Location:	COLORADO	Slot:	SLOT#01 NORTH PLATTE Y-U-13HC (619'FSL & 443'FEL, SEC.13)
Field:	WELD COUNTY	Well:	NORTH PLATTE Y-U-13HC
Facility:	SEC.13-T05N-R63W	Wellbore:	NORTH PLATTE Y-U-13HC PWB

Plot reference wellpath is NORTH PLATTE Y-U-13HC PWP (REV-V.0)	
True vertical depths are referenced to XTREME 22 (17KB) (RKB)	Grid System: NAD83 / Lambert Colorado SP, Northern Zone (501), US feet
Measured depths are referenced to XTREME 22 (17KB) (RKB)	North Reference: True north
XTREME 22 (17KB) (RKB) to Mean Sea Level: 4614 feet	Scale: True distance
Mean Sea Level to Mud line (At Slot: SLOTH01 NORTH PLATTE Y-U-13HC (619FSL & 443FEL SEC.13): 0 feet	Depths are in feet
Coordinates are in feet referenced to: SLOTH	Created by: inominiam on 1/11/2016



BGGM (1945.0 to 2017.0) Dip: 67.02° Field: 52615.6 nT
Magnetic North is 8.28 degrees East of True North (at 1/8/2016)

To correct azimuth from Magnetic to True add 8.28 degrees





Planned Wellpath Report

NORTH PLATTE T44-P41-13HNC PWP (REV-A.0)
Page 1 of 6



REFERENCE WELLPATH IDENTIFICATION

Operator	BONANZA CREEK OIL COMPANY	Slot	SLOT#03 NORTH PLATTE T44-P41-13HNC (659'FSL & 441'FEL, SEC.13)
Area	COLORADO	Well	NORTH PLATTE T44-P41-13HNC
Field	WELD COUNTY	Wellbore	NORTH PLATTE T44-P41-13HNC PWB
Facility	SEC.13-T05N-R63W		

REPORT SETUP INFORMATION

Projection System	NAD83 / Lambert Colorado SP, Northern Zone (501), US feet	Software System	WellArchitect® 4.1.1
North Reference	True	User	Ingmjmr
Scale	0.99996	Report Generated	1/11/2016 at 11:52:30 AM
Convergence at slot	0.73° East	Database/Source file	WA_DEN_Denver_Defn/NORTH_PLATTE_T44-P41-13HNC_PWB.xml

WELLPATH LOCATION

	Local coordinates		Grid coordinates		Geographic coordinates	
	North[ft]	East[ft]	Easting[US ft]	Northing[US ft]	Latitude	Longitude
Slot Location	40.07	0.00	3312874.45	1388225.20	40°23'37.104"N	104°22'36.084"W
Facility Reference Pt			3312874.96	1388185.13	40°23'36.708"N	104°22'36.084"W
Field Reference Pt			3335925.10	1457282.25	40°34'56.460"N	104°17'26.016"W

WELLPATH DATUM

Calculation method	Minimum curvature	XTREME 22 (17'KB) (RKB) to Facility Vertical Datum	4614.00ft
Horizontal Reference Pt	Slot	XTREME 22 (17'KB) (RKB) to Mean Sea Level	4614.00ft
Vertical Reference Pt	XTREME 22 (17'KB) (RKB)	XTREME 22 (17'KB) (RKB) to Mud Line at Slot (SLOT#03 NORTH PLATTE T44-P41-13HNC (659'FSL & 441'FEL, SEC.13))	4614.00ft
MD Reference Pt	XTREME 22 (17'KB) (RKB)	Section Origin	N 0.00, E 0.00 ft
Field Vertical Reference	Mean Sea Level	Section Azimuth	353.26°



Planned Wellpath Report

NORTH PLATTE T44-P41-13HNC PWP (REV-A.0)

Page 2 of 6



REFERENCE WELLPATH IDENTIFICATION

Operator	BONANZA CREEK OIL COMPANY	Slot	SLOT#03 NORTH PLATTE T44-P41-13HNC (659'FSL & 441'FEL, SEC.13)
Area	COLORADO	Well	NORTH PLATTE T44-P41-13HNC
Field	WELD COUNTY	Wellbore	NORTH PLATTE T44-P41-13HNC PWB
Facility	SEC.13-T05N-R63W		

WELLPATH DATA (130 stations) † = interpolated/extrapolated station

MD [ft]	Inclination [°]	Azimuth [°]	TVD [ft]	Vert Sect [ft]	North [ft]	East [ft]	DLS [°/100ft]	Comments
0.00†	0.000	214.500	0.00	0.00	0.00	0.00	0.00	
17.00	0.000	214.500	17.00	0.00	0.00	0.00	0.00	Tie On
117.00†	0.000	214.500	117.00	0.00	0.00	0.00	0.00	
217.00†	0.000	214.500	217.00	0.00	0.00	0.00	0.00	
317.00†	0.000	214.500	317.00	0.00	0.00	0.00	0.00	
417.00†	0.000	214.500	417.00	0.00	0.00	0.00	0.00	
517.00†	0.000	214.500	517.00	0.00	0.00	0.00	0.00	
617.00†	0.000	214.500	617.00	0.00	0.00	0.00	0.00	
717.00†	0.000	214.500	717.00	0.00	0.00	0.00	0.00	
817.00†	0.000	214.500	817.00	0.00	0.00	0.00	0.00	
917.00†	0.000	214.500	917.00	0.00	0.00	0.00	0.00	
1017.00†	0.000	214.500	1017.00	0.00	0.00	0.00	0.00	
1117.00†	0.000	214.500	1117.00	0.00	0.00	0.00	0.00	
1217.00†	0.000	214.500	1217.00	0.00	0.00	0.00	0.00	
1317.00†	0.000	214.500	1317.00	0.00	0.00	0.00	0.00	
1417.00†	0.000	214.500	1417.00	0.00	0.00	0.00	0.00	
1517.00†	0.000	214.500	1517.00	0.00	0.00	0.00	0.00	
1617.00†	0.000	214.500	1617.00	0.00	0.00	0.00	0.00	
1717.00†	0.000	214.500	1717.00	0.00	0.00	0.00	0.00	
1817.00†	0.000	214.500	1817.00	0.00	0.00	0.00	0.00	
1917.00†	0.000	214.500	1917.00	0.00	0.00	0.00	0.00	
2017.00†	0.000	214.500	2017.00	0.00	0.00	0.00	0.00	
2117.00†	0.000	214.500	2117.00	0.00	0.00	0.00	0.00	
2200.00	0.000	214.500	2200.00	0.00	0.00	0.00	0.00	End of Tangent
2217.00†	0.340	214.500	2217.00	-0.04	-0.04	-0.03	2.00	
2317.00†	2.340	214.500	2316.97	-1.80	-1.97	-1.35	2.00	
2417.00†	4.340	214.500	2416.79	-6.18	-6.77	-4.65	2.00	
2517.00†	6.340	214.500	2516.35	-13.18	-14.44	-9.92	2.00	
2617.00†	8.340	214.500	2615.53	-22.78	-24.97	-17.16	2.00	
2717.00†	10.340	214.500	2714.20	-34.98	-38.34	-26.35	2.00	
2817.00†	12.340	214.500	2812.24	-49.77	-54.55	-37.49	2.00	
2917.00†	14.340	214.500	2909.54	-67.12	-73.56	-50.56	2.00	
3000.00	16.000	214.500	2989.64	-83.45	-91.46	-62.86	2.00	End of Build
3017.00†	16.000	214.500	3005.98	-86.97	-95.32	-65.51	0.00	
3117.00†	16.000	214.500	3102.11	-107.70	-118.04	-81.12	0.00	
3217.00†	16.000	214.500	3198.24	-128.43	-140.75	-96.74	0.00	
3317.00†	16.000	214.500	3294.36	-149.16	-163.47	-112.35	0.00	
3366.00†	16.000	214.500	3341.46	-159.31	-174.60	-120.00	0.00	PARKMAN
3417.00†	16.000	214.500	3390.49	-169.88	-186.18	-127.96	0.00	
3517.00†	16.000	214.500	3486.62	-190.61	-208.90	-143.57	0.00	
3617.00†	16.000	214.500	3582.74	-211.34	-231.62	-159.19	0.00	
3717.00†	16.000	214.500	3678.87	-232.06	-254.33	-174.80	0.00	
3817.00†	16.000	214.500	3774.99	-252.79	-277.05	-190.41	0.00	
3917.00†	16.000	214.500	3871.12	-273.52	-299.76	-206.02	0.00	
4017.00†	16.000	214.500	3967.25	-294.25	-322.48	-221.63	0.00	



Planned Wellpath Report

NORTH PLATTE T44-P41-13HNC PWP (REV-A.0)
Page 3 of 6



REFERENCE WELLPATH IDENTIFICATION

Operator	BONANZA CREEK OIL COMPANY	Slot	SLOT#03 NORTH PLATTE T44-P41-13HNC (659'FSL & 441'FEL, SEC.13)
Area	COLORADO	Well	NORTH PLATTE T44-P41-13HNC
Field	WELD COUNTY	Wellbore	NORTH PLATTE T44-P41-13HNC PWB
Facility	SEC.13-T05N-R63W		

WELLPATH DATA (130 stations) † = interpolated/extrapolated station

MD [ft]	Inclination [°]	Azimuth [°]	TVD [ft]	Vert Sect [ft]	North [ft]	East [ft]	DLS [°/100ft]	Comments
4117.00†	16.000	214.500	4063.37	-314.97	-345.20	-237.25	0.00	
4217.00†	16.000	214.500	4159.50	-335.70	-367.91	-252.86	0.00	
4317.00†	16.000	214.500	4255.62	-356.43	-390.63	-268.47	0.00	
4417.00†	16.000	214.500	4351.75	-377.15	-413.34	-284.08	0.00	
4517.00†	16.000	214.500	4447.88	-397.88	-436.06	-299.70	0.00	
4617.00†	16.000	214.500	4544.00	-418.61	-458.78	-315.31	0.00	
4717.00†	16.000	214.500	4640.13	-439.33	-481.49	-330.92	0.00	
4817.00†	16.000	214.500	4736.26	-460.06	-504.21	-346.53	0.00	
4917.00†	16.000	214.500	4832.38	-480.79	-526.92	-362.15	0.00	
4931.01	16.000	214.500	4845.84	-483.69	-530.11	-364.33	0.00	End of Tangent
5017.00†	14.280	214.500	4928.85	-500.58	-548.62	-377.05	2.00	
5117.00†	12.280	214.500	5026.17	-517.85	-567.55	-390.06	2.00	
5217.00†	10.280	214.500	5124.24	-532.56	-583.67	-401.14	2.00	
5317.00†	8.280	214.500	5222.92	-544.69	-596.95	-410.28	2.00	
5417.00†	6.280	214.500	5322.11	-554.22	-607.40	-417.45	2.00	
5517.00†	4.280	214.500	5421.68	-561.13	-614.98	-422.66	2.00	
5617.00†	2.280	214.500	5521.51	-565.44	-619.70	-425.91	2.00	
5717.00†	0.280	214.500	5621.48	-567.12	-621.54	-427.17	2.00	
5731.01	0.000	359.099	5635.49	-567.14	-621.57	-427.19	2.00	End of Drop
5817.00†	0.000	359.099	5721.48	-567.14	-621.57	-427.19	0.00	
5917.00†	0.000	359.099	5821.48	-567.14	-621.57	-427.19	0.00	
5966.01	0.000	359.099	5870.49	-567.14	-621.57	-427.19	0.00	End of Tangent
6017.00†	5.609	359.099	5921.40	-564.66	-619.07	-427.23	11.00	
6117.00†	16.609	359.099	6019.38	-545.52	-599.83	-427.53	11.00	
6135.00†	18.589	359.099	6036.53	-540.11	-594.39	-427.62	11.00	SHARON SPRINGS
6165.00†	21.889	359.099	6064.68	-529.79	-584.02	-427.78	11.00	SHARON SPRINGS "A"
6203.00†	26.069	359.099	6099.39	-514.43	-568.58	-428.02	11.00	SHARON SPRINGS "B"
6217.00†	27.609	359.099	6111.88	-508.14	-562.26	-428.12	11.00	
6242.00†	30.359	359.099	6133.75	-496.09	-550.15	-428.31	11.00	NIOBRARA "A" CHALK
6256.00†	31.899	359.099	6145.73	-488.89	-542.91	-428.43	11.00	NIOBRARA "A" MARL
6317.00†	38.609	359.099	6195.51	-453.88	-507.73	-428.98	11.00	NIOBRARA "B" CHALK
6341.00†	41.249	359.099	6213.92	-438.56	-492.33	-429.22	11.00	NIOBRARA "B" MARL
6387.00†	46.309	359.099	6247.12	-406.91	-460.51	-429.72	11.00	NIOBRARA "C" CHALK
6417.00†	49.609	359.099	6267.21	-384.74	-438.24	-430.07	11.00	
6517.00†	60.609	359.099	6324.32	-303.27	-356.35	-431.36	11.00	
6602.37	70.000	359.099	6359.95	-226.20	-278.89	-432.58	11.00	End of Build
6617.00†	70.000	359.099	6364.95	-212.52	-265.14	-432.80	0.00	
6672.37	70.000	359.099	6383.89	-160.76	-213.11	-433.61	0.00	End of Tangent
6717.00†	74.909	359.099	6397.34	-118.44	-170.58	-434.28	11.00	
6817.00†	85.909	359.099	6413.97	-20.50	-72.14	-435.83	11.00	
6854.22	90.004	359.099	6415.30	16.50	-34.95	-436.42	11.00	End of 3D Arc
6917.00†	90.004	359.099	6415.29	78.95	27.82	-437.40	0.00	
7017.00†	90.004	359.099	6415.29	178.43	127.80	-438.98	0.00	
7117.00†	90.004	359.099	6415.28	277.91	227.79	-440.55	0.00	
7217.00†	90.004	359.099	6415.27	377.40	327.78	-442.12	0.00	



Planned Wellpath Report

NORTH PLATTE T44-P41-13HNC PWP (REV-A.0)
Page 4 of 6



REFERENCE WELLPATH IDENTIFICATION

Operator	BONANZA CREEK OIL COMPANY	Slot	SLOT#03 NORTH PLATTE T44-P41-13HNC (659'FSL & 441'FEL, SEC.13)
Area	COLORADO	Well	NORTH PLATTE T44-P41-13HNC
Field	WELD COUNTY	Wellbore	NORTH PLATTE T44-P41-13HNC PWB
Facility	SEC.13-T05N-R63W		

WELLPATH DATA (130 stations) † = interpolated/extrapolated station

MD [ft]	Inclination [°]	Azimuth [°]	TVD [ft]	Vert Sect [ft]	North [ft]	East [ft]	DLS [°/100ft]	Comments
7317.00†	90.004	359.099	6415.27	476.88	427.77	-443.70	0.00	
7417.00†	90.004	359.099	6415.26	576.36	527.75	-445.27	0.00	
7517.00†	90.004	359.099	6415.25	675.84	627.74	-446.84	0.00	
7617.00†	90.004	359.099	6415.25	775.32	727.73	-448.42	0.00	
7717.00†	90.004	359.099	6415.24	874.80	827.72	-449.99	0.00	
7817.00†	90.004	359.099	6415.23	974.28	927.71	-451.56	0.00	
7917.00†	90.004	359.099	6415.23	1073.77	1027.69	-453.13	0.00	
8017.00†	90.004	359.099	6415.22	1173.25	1127.68	-454.71	0.00	
8117.00†	90.004	359.099	6415.21	1272.73	1227.67	-456.28	0.00	
8217.00†	90.004	359.099	6415.20	1372.21	1327.66	-457.85	0.00	
8317.00†	90.004	359.099	6415.20	1471.69	1427.64	-459.43	0.00	
8417.00†	90.004	359.099	6415.19	1571.17	1527.63	-461.00	0.00	
8517.00†	90.004	359.099	6415.18	1670.65	1627.62	-462.57	0.00	
8617.00†	90.004	359.099	6415.18	1770.14	1727.61	-464.15	0.00	
8717.00†	90.004	359.099	6415.17	1869.62	1827.59	-465.72	0.00	
8817.00†	90.004	359.099	6415.16	1969.10	1927.58	-467.29	0.00	
8917.00†	90.004	359.099	6415.16	2068.58	2027.57	-468.87	0.00	
9017.00†	90.004	359.099	6415.15	2168.06	2127.56	-470.44	0.00	
9117.00†	90.004	359.099	6415.14	2267.54	2227.54	-472.01	0.00	
9217.00†	90.004	359.099	6415.13	2367.02	2327.53	-473.59	0.00	
9317.00†	90.004	359.099	6415.13	2466.51	2427.52	-475.16	0.00	
9417.00†	90.004	359.099	6415.12	2565.99	2527.51	-476.73	0.00	
9517.00†	90.004	359.099	6415.11	2665.47	2627.49	-478.30	0.00	
9617.00†	90.004	359.099	6415.11	2764.95	2727.48	-479.88	0.00	
9717.00†	90.004	359.099	6415.10	2864.43	2827.47	-481.45	0.00	
9817.00†	90.004	359.099	6415.09	2963.91	2927.46	-483.02	0.00	
9917.00†	90.004	359.099	6415.09	3063.39	3027.45	-484.60	0.00	
10017.00†	90.004	359.099	6415.08	3162.88	3127.43	-486.17	0.00	
10117.00†	90.004	359.099	6415.07	3262.36	3227.42	-487.74	0.00	
10217.00†	90.004	359.099	6415.07	3361.84	3327.41	-489.32	0.00	
10317.00†	90.004	359.099	6415.06	3461.32	3427.40	-490.89	0.00	
10417.00†	90.004	359.099	6415.05	3560.80	3527.38	-492.46	0.00	
10517.00†	90.004	359.099	6415.04	3660.28	3627.37	-494.04	0.00	
10617.00†	90.004	359.099	6415.04	3759.76	3727.36	-495.61	0.00	
10717.00†	90.004	359.099	6415.03	3859.25	3827.35	-497.18	0.00	
10817.00†	90.004	359.099	6415.02	3958.73	3927.33	-498.76	0.00	
10917.00†	90.004	359.099	6415.02	4058.21	4027.32	-500.33	0.00	
11017.00†	90.004	359.099	6415.01	4157.69	4127.31	-501.90	0.00	
11117.00†	90.004	359.099	6415.00	4257.17	4227.30	-503.47	0.00	
11155.81	90.004	359.099	6415.00 [†]	4295.78	4266.10	-504.09	0.00	End of Tangent



Planned Wellpath Report

NORTH PLATTE T44-P41-13HNC PWP (REV-A.0)
Page 5 of 6



REFERENCE WELLPATH IDENTIFICATION

Operator	BONANZA CREEK OIL COMPANY	Slot	SLOT#03 NORTH PLATTE T44-P41-13HNC (659'FSL & 441'FEL, SEC.13)
Area	COLORADO	Well	NORTH PLATTE T44-P41-13HNC
Field	WELD COUNTY	Wellbore	NORTH PLATTE T44-P41-13HNC PWB
Facility	SEC.13-T05N-R63W		

HOLE & CASING SECTIONS -

Ref Wellbore: NORTH PLATTE T44-P41-13HNC PWB

Ref Wellpath: NORTH PLATTE T44-P41-13HNC PWP (REV-A.0)

String/Diameter	Start MD [ft]	End MD [ft]	Interval [ft]	Start TVD [ft]	End TVD [ft]	Start N/S [ft]	Start E/W [ft]	End N/S [ft]	End E/W [ft]
13.5in Open Hole	17.00	1600.00	1583.00	17.00	1600.00	0.00	0.00	0.00	0.00
9.625in Casing Surface	17.00	1600.00	1583.00	17.00	1600.00	0.00	0.00	0.00	0.00
8.75in Open Hole	1600.00	11155.81	9555.81	1600.00	N/A	0.00	0.00	N/A	N/A
5.5in Casing Production	17.00	11155.81	11138.81	17.00	N/A	0.00	0.00	N/A	N/A

TARGETS

Name	MD [ft]	TVD [ft]	North [ft]	East [ft]	Grid East [US ft]	Grid North [US ft]	Latitude	Longitude	Shape
SEC.13-T05N-R63W		0.00	-40.07	0.00	3312874.96	1388185.13	40°23'36.708"N	104°22'36.084"W	polygon
1) NORTH PLATTE T44-P41-13HNC BHL ON PLAT (470'FNL & 860'FEL, SEC.13)	11155.81	6415.00	4266.10	-504.09	3312316.39	1392484.39	40°24'19.260"N	104°22'42.600"W	point
NORTH PLATTE T44-P41-13HNC TARGET 1 (531'FSL & 881'FEL, SEC.13)		6415.00	-120.22	-437.32	3312438.70	1388099.45	40°23'35.916"N	104°22'41.736"W	point
NORTH PLATTE T44-P41-13HNC TOP (631'FSL & 880'FEL, SEC.13)		6415.00	-21.85	-440.11	3312434.67	1388197.77	40°23'36.888"N	104°22'41.772"W	point
SEC.13-T05N-R63W (460' SETBACK)		6514.00	-40.07	0.00	3312874.96	1388185.13	40°23'36.708"N	104°22'36.084"W	polygon

SURVEY PROGRAM -

Ref Wellbore: NORTH PLATTE T44-P41-13HNC PWB

Ref Wellpath: NORTH PLATTE T44-P41-13HNC PWP (REV-A.0)

Start MD [ft]	End MD [ft]	Positional Uncertainty Model	Log Name/Comment	Wellbore
17.00	11155.81	Custom NaviTrak (MagCorr) (Rockies 0.03Gt model)		NORTH PLATTE T44-P41-13HNC PWB



Planned Wellpath Report

NORTH PLATTE T44-P41-13HNC PWP (REV-A.0)
Page 6 of 6



REFERENCE WELLPATH IDENTIFICATION

Operator	BONANZA CREEK OIL COMPANY	Slot	SLOT#03 NORTH PLATTE T44-P41-13HNC (659'FSL & 441'FEL, SEC.13)
Area	COLORADO	Well	NORTH PLATTE T44-P41-13HNC
Field	WELD COUNTY	Wellbore	NORTH PLATTE T44-P41-13HNC PWB
Facility	SEC.13-T05N-R63W		

WELLPATH COMMENTS

MD [ft]	Inclination [°]	Azimuth [°]	TVD [ft]	Comment
3366.00	16.000	214.500	3341.46	PARKMAN
6135.00	18.589	359.099	6036.53	SHARON SPRINGS
6165.00	21.889	359.099	6064.68	SHARON SPRINGS "A"
6203.00	26.069	359.099	6099.39	SHARON SPRINGS "B"
6242.00	30.359	359.099	6133.75	NIOBRARA "A" CHALK
6256.00	31.899	359.099	6145.73	NIOBRARA "A" MARL
6317.00	38.609	359.099	6195.51	NIOBRARA "B" CHALK
6341.00	41.249	359.099	6213.92	NIOBRARA "B" MARL
6387.00	46.309	359.099	6247.12	NIOBRARA "C" CHALK

DESIGN COMMENTS

MD [ft]	Inclination [°]	Azimuth [°]	TVD [ft]	Comment
17.00	0.000	214.500	17.00	Tie On
2200.00	0.000	214.500	2200.00	End of Tangent
3000.00	16.000	214.500	2989.64	End of Build
4931.01	16.000	214.500	4845.84	End of Tangent
5731.01	0.000	359.099	5635.49	End of Drop
5966.01	0.000	359.099	5870.49	End of Tangent
6602.37	70.000	359.099	6359.95	End of Build
6672.37	70.000	359.099	6383.89	End of Tangent
6854.22	90.004	359.099	6415.30	End of 3D Arc
11155.81	90.004	359.099	6415.00	End of Tangent