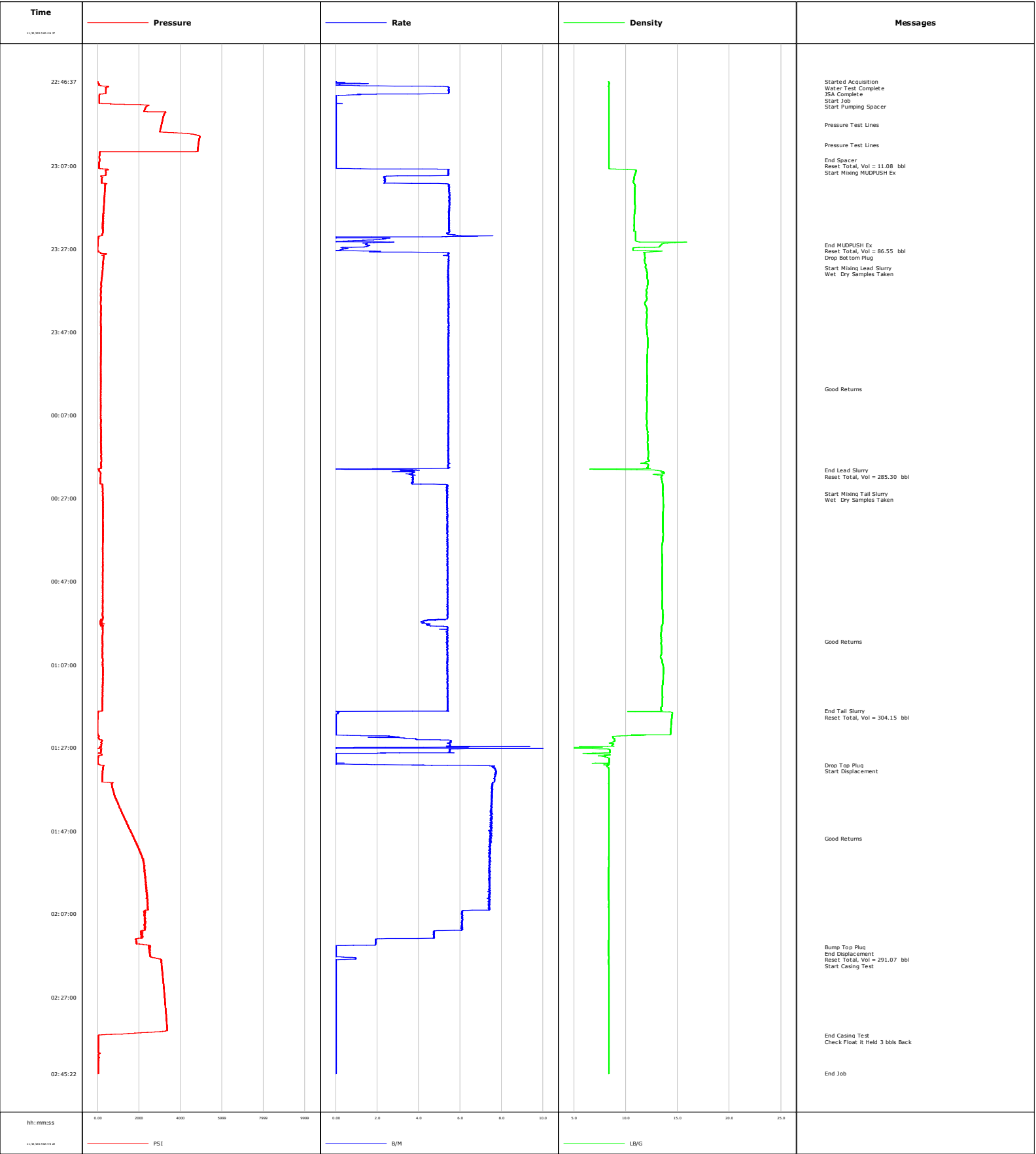
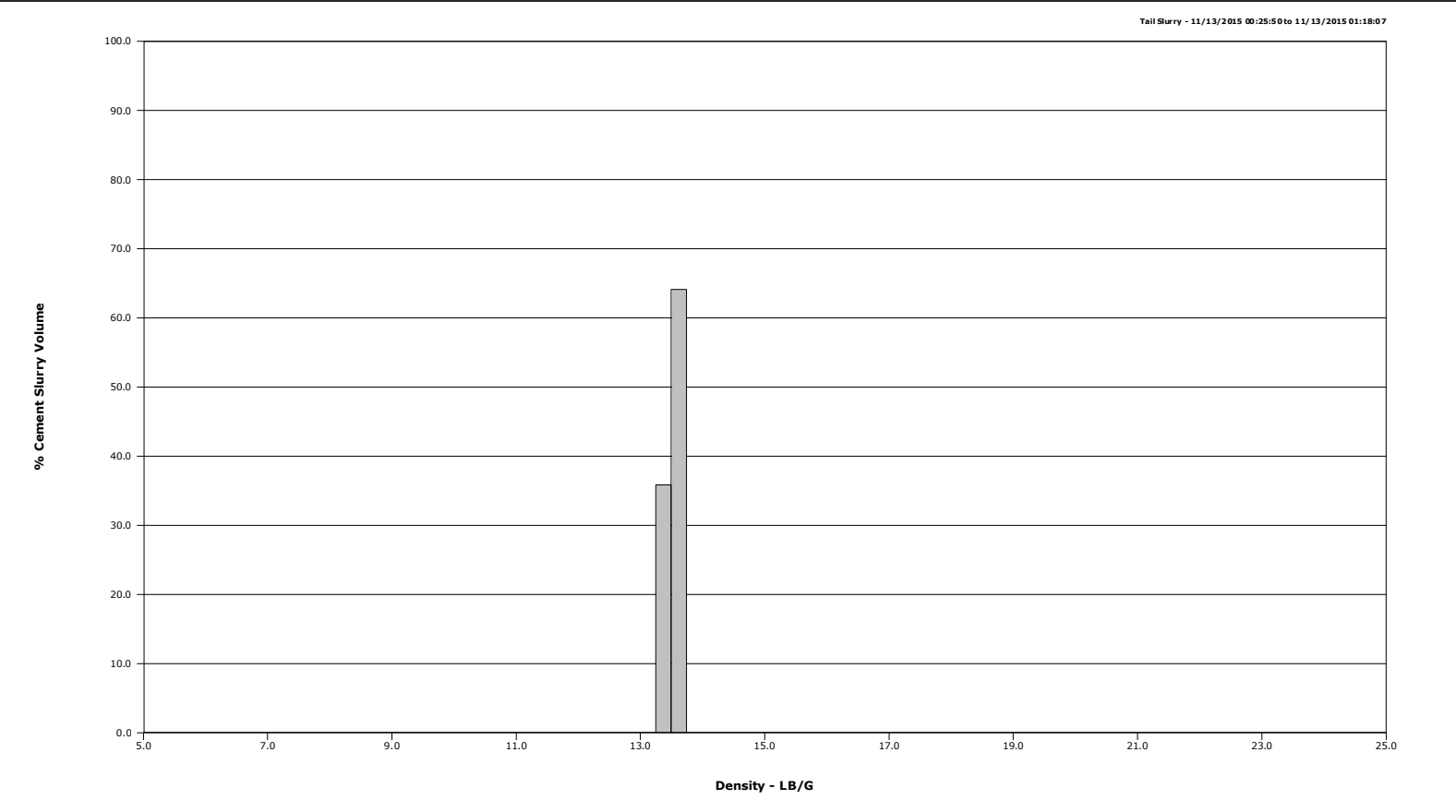
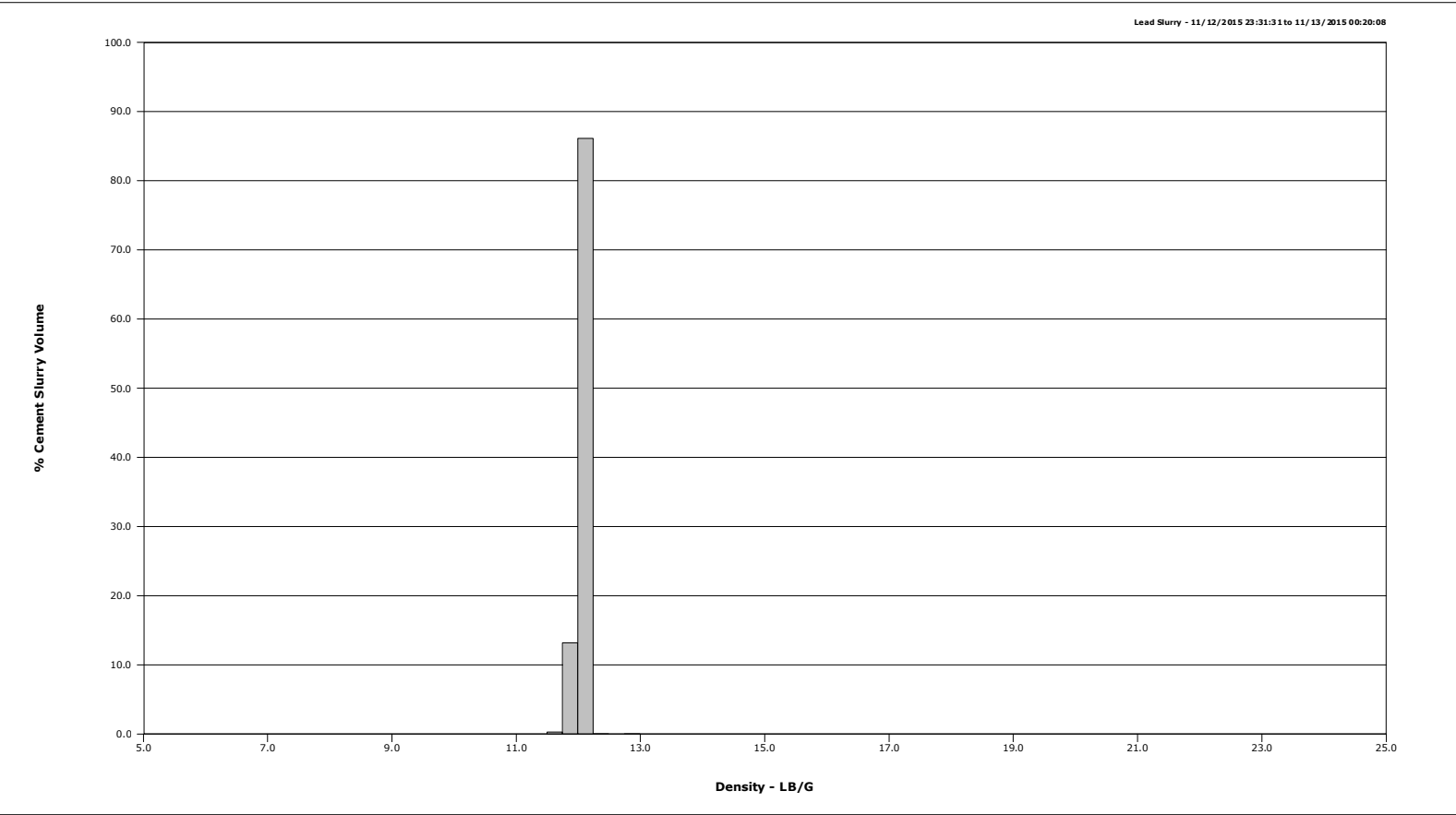


Well	Sunflower	Client	Anadarko
Field	Wattenberg	SIR No.	DSVO-00917
Engineer	Wayne Silvester/Justin Storey	Job Type	Monobore
Country	United States	Job Date	11-12-2015



Well	Sunflower	Client	Anadarko
Field	Wattenberg	SIR No.	DSVO-00917
Engineer	Wayne Silvester/Justin Storey	Job Type	Monobore
Country	United States	Job Date	11-12-2015



				Customer Anadarko				Job Number DSVG-00917					
Well Sunflower 7N-17HZ			Location (legal) 217304			Schlumberger Location Cheyenne			Job Start Nov/12/2015				
Field Wattenberg		Formation Name/Type Shale			Deviation deg		Bit Size 8.5 in		Well MD 12602.1 ft		Well TVD 7131.0 ft		
County Weld		State/Province Colorado			BHP psi		BHST 233 degF		BHCT 228 degF		Pore Press. Gradient lb/gal		
Well Master 0631651864		API/ UWI 05123420690000											
Rig Name P461		Drilled For Oil & Gas		Service Via Land		Casing/Liner							
						Depth, ft		Size, in		Weight, lb/ft		Grade	
												Thread	
Offshore Zone		Well Class New		Well Type Other		12602.1		5.5		17.0		N/A	
						0.0		0.0		0.0			
Drilling Fluid Type LT OBM		Max. Density 9.50 lb/gal		Plastic Viscosity cP		Tubing/Drill Pipe							
						T/D		Depth, ft		Size, in		Weight, lb/ft	
												Grade	
												Thread	
Service Line Cementing		Job Type Monobore											
Max. Allowed Tub. Press psi		Max. Allowed Ann. Press psi		WH Connection 5 1/2		Perforations/Open Hole							
						Top, ft		Bottom, ft		shot/ft		No. of Shots	
						ft		ft				Total Interval ft	
						ft		ft				Diameter in	
						ft		ft					
Service Instructions 1.Rig-Up, Prime-Up, Pressure-Test (2.5% variance in 3 minutes) per Standard 5 2.Confirm design with Client Representative 3.Check Mud Density and Rheology. 4.Perform Water Quality test prior to job. 5.Pump MUDPUSH Express at least 0.2ppg heavier than Mud. 6.DO NOT PUMP AWAY SLURRY BELOW MUD WEIGHT!! 7.Wash up to pit, clear line until freshwater observed at pits. 8.COUNT EXACT TANKS ON DISPLACEMENT. 9.MAXIMUM OVERDISPLACEMENT = Verify with Company Representative on location prior to the job. Minimum slurry volume pumped is the total lead volume, at beginning of 30 min shut down DESC must be notified who will receive approval to drop the plug from client. Client understands risks of trying to circulate out more than lead volume. Maximum Stop Time = 30 mins Cement Rates: 4-6 bbl/min Displacement Rates: 5-8 bbl/min verify with Company Representative Densities +/- 0.2ppg of design						Treat Down Casing		Displacement 291.0 bbl		Packer Type		Packer Depth ft	
						Tubing Vol. bbl		Casing Vol. 293.0 bbl		Annular Vol. 90.0 bbl		Openhole Vol. 437.0 bbl	
Casing/Tubing Secured <input checked="" type="checkbox"/>		1 Hole Vol. Circulated prior to Cement <input checked="" type="checkbox"/>				Casing Tools				Squeeze Job			
Lift Pressure 2290 psi						Shoe Type Float				Squeeze Type			
Pipe Rotated <input type="checkbox"/>		Pipe Reciprocated <input type="checkbox"/>				Shoe Depth 12602.1 ft				Tool Type			
No. Centralizers		Top Plugs 1		Bottom Plugs 1		Stage Tool Type				Tool Depth ft			
Cement Head Type Double						Stage Tool Depth ft				Tail Pipe Size in			
Job Scheduled For Nov/12/2015		Arrived on Location Nov/12/2015		Leave Location Nov/12/2015		Collar Type Float				Tail Pipe Depth ft			
						Collar Depth 12514.6 ft				Seq. Total Vol. bbl			
Date	Time 24-hr clock	Flow Rate B/M	Density LB/G	Volume BBL	CPF1_PRESS PSI	Message							
11/12/2015	22:46:37	0.0	8.23	0.0	-4	Started Acquisition							
11/12/2015	22:47:02	0.9	8.37	0.0	8	Water Test Complete							
11/12/2015	22:47:04	1.3	8.38	0.1	16	Start Job							
11/12/2015	22:47:07	1.6	8.39	0.1	47	Start Pumping Spacer							
11/12/2015	22:51:38	0.0	8.36	11.1	76								
11/12/2015	22:56:39	0.0	8.36	11.1	3087								
11/12/2015	22:57:03	0.0	8.36	11.1	3069	Pressure Test Lines							
11/12/2015	23:01:40	0.0	8.36	11.1	4902								
11/12/2015	23:02:04	0.0	8.36	11.1	4888	Pressure Test Lines							
11/12/2015	23:05:29	0.0	8.36	11.1	82	End Spacer							
11/12/2015	23:05:31	0.0	8.36	11.1	81	Reset Total, Vol = 11.08 bbl							
11/12/2015	23:05:59	0.0	8.36	11.1	73	Start Mixing MUDPUSH Ex							
11/12/2015	23:06:41	0.0	8.36	11.1	72								
11/12/2015	23:11:42	5.4	10.88	27.4	398								
11/12/2015	23:16:43	5.5	10.89	54.9	444								
11/12/2015	23:21:44	5.5	10.82	82.3	373								
11/12/2015	23:26:00	1.6	13.35	97.5	7	End MUDPUSH Ex							
11/12/2015	23:26:01	1.6	13.35	97.5	7	Reset Total, Vol = 86.55 bbl							
11/12/2015	23:26:23	1.4	13.22	98.1	-0	Drop Bot tom Plug							
11/12/2015	23:26:45	0.6	10.69	98.3	-0								
11/12/2015	23:31:31	5.4	11.91	120.0	362	Start Mixing Lead Slurry							

Well			Field	Job Start	Customer	Job Number
Sunflower 7N-17HZ			Wattenberg	Nov/12/2015	Anadarko	DSVO-00917
Date	Time 24-hr clock	Flow Rate B/M	Density LB/G	Volume BBL	CPF1_PRESS PSI	Message
11/12/2015	23:31:46	5.4	11.97	121.3	346	
11/12/2015	23:36:47	5.4	11.96	148.5	225	
11/12/2015	23:41:48	5.4	12.02	175.8	227	
11/12/2015	23:46:49	5.4	12.03	203.0	229	
11/12/2015	23:51:50	5.4	12.07	230.2	237	
11/12/2015	23:56:51	5.4	12.03	257.5	239	
11/13/2015	00:00:34	5.4	12.05	277.6	230	Good Returns
11/13/2015	00:01:52	5.4	12.03	284.7	221	
11/13/2015	00:06:53	5.4	12.01	311.9	232	
11/13/2015	00:11:54	5.4	12.10	339.1	232	
11/13/2015	00:16:55	5.4	12.15	366.3	235	
11/13/2015	00:20:08	4.0	12.92	382.5	162	End Lead Slurry
11/13/2015	00:20:13	3.8	13.15	382.8	181	Reset Total, Vol = 285.30 bbl
11/13/2015	00:21:56	3.7	13.42	389.1	208	
11/13/2015	00:25:50	5.4	13.57	407.4	345	Start Mixing Tail Slurry
11/13/2015	00:25:55	5.4	13.57	407.8	321	Wet Dry Samples Taken
11/13/2015	00:26:57	5.4	13.59	413.4	333	
11/13/2015	00:31:58	5.4	13.57	440.3	344	
11/13/2015	00:36:59	5.4	13.56	467.3	331	
11/13/2015	00:42:00	5.4	13.51	494.2	334	
11/13/2015	00:47:01	5.4	13.49	521.2	328	
11/13/2015	00:52:02	5.4	13.50	548.2	345	
11/13/2015	00:57:03	4.5	13.55	574.1	173	
11/13/2015	01:01:22	5.4	13.41	596.8	303	Good Returns
11/13/2015	01:02:04	5.4	13.41	600.5	302	
11/13/2015	01:07:05	5.4	13.58	627.5	328	
11/13/2015	01:12:06	5.4	13.52	654.5	336	
11/13/2015	01:17:07	5.4	13.40	681.5	314	
11/13/2015	01:18:07	3.7	13.41	686.9	96	End Tail Slurry
11/13/2015	01:18:08	0.0	13.38	686.9	96	Reset Total, Vol = 304.15 bbl
11/13/2015	01:22:08	0.0	14.34	686.9	-4	
11/13/2015	01:27:09	6.3	6.79	701.5	233	
11/13/2015	01:31:00	3.2	7.93	707.4	151	Drop Top Plug
11/13/2015	01:31:01	3.8	7.87	707.4	146	Start Displacement
11/13/2015	01:32:10	7.7	8.35	715.6	241	
11/13/2015	01:37:11	7.5	8.35	753.9	763	
11/13/2015	01:42:12	7.5	8.35	791.6	1154	
11/13/2015	01:47:13	7.5	8.35	829.2	1648	
11/13/2015	01:48:42	7.5	8.35	840.3	1774	Good Returns
11/13/2015	01:52:14	7.4	8.34	866.6	2103	
11/13/2015	01:57:15	7.4	8.34	903.8	2291	
11/13/2015	02:02:16	7.4	8.34	941.0	2372	
11/13/2015	02:07:17	6.1	8.35	976.4	2265	
11/13/2015	02:12:18	4.7	8.34	1005.0	2152	
11/13/2015	02:14:57	0.0	8.34	1010.5	2481	Bump Top Plug
11/13/2015	02:14:58	0.0	8.34	1010.5	2481	End Displacement
11/13/2015	02:15:09	0.0	8.34	1010.5	2483	Reset Total, Vol = 291.07 bbl
11/13/2015	02:17:19	0.5	8.34	1010.6	2602	
11/13/2015	02:18:00	0.0	8.34	1011.0	3071	Start Casing Test
11/13/2015	02:22:20	0.0	8.35	1011.0	3162	
11/13/2015	02:27:21	0.0	8.35	1011.0	3252	
11/13/2015	02:32:22	0.0	8.35	1011.0	3335	
11/13/2015	02:36:13	0.0	8.35	1011.0	33	End Casing Test
11/13/2015	02:37:15	0.0	8.36	1011.0	28	Check Float & Held 3 bbls Back

Well  Sunflower 7N-17HZ			Field  Wattenberg		Job Start  Nov/12/2015		Customer  Anadarko		Job Number  DSVO-00917	
Date	Time 24-hr clock	Flow Rate B/M	Density LB/G	Volume BBL	CPF1_PRESS PSI		Message			
11/13/2015	02:42:24	0.0	8.36	1011.0	26					

Post Job Summary

Average Pump Rates, bbl/min					Volume of Fluid Injected, bbl			
Slurry 5.5	N2	Mud	Maximum Rate 8.0		Total Slurry 589.1	Mud 0.0	Spacer 11.0	N2
Treating Pressure Summary, psi					Breakdown Fluid			
Maximum 5238	Final 21	Average 955	Bump Plug to 2790	Breakdown	Type	Volume bbl	Density lb/gal	
Avg. N2 Percent %		Designed Slurry Volume 555.0 bbl	Displacement 291.2 bbl	Mix Water Temp 80 degf	Cement Circulated to Surface? <input checked="" type="checkbox"/>		Volume 22.0 bbl	
					Washed Thru Perfs <input type="checkbox"/>		To ft	
Customer or Authorized Representative			Schlumberger Supervisor			Circulation Lost <input type="checkbox"/>	Job Completed <input checked="" type="checkbox"/>	
Charlie Daigle			Wayne Silvester/Justin Storey			-		-