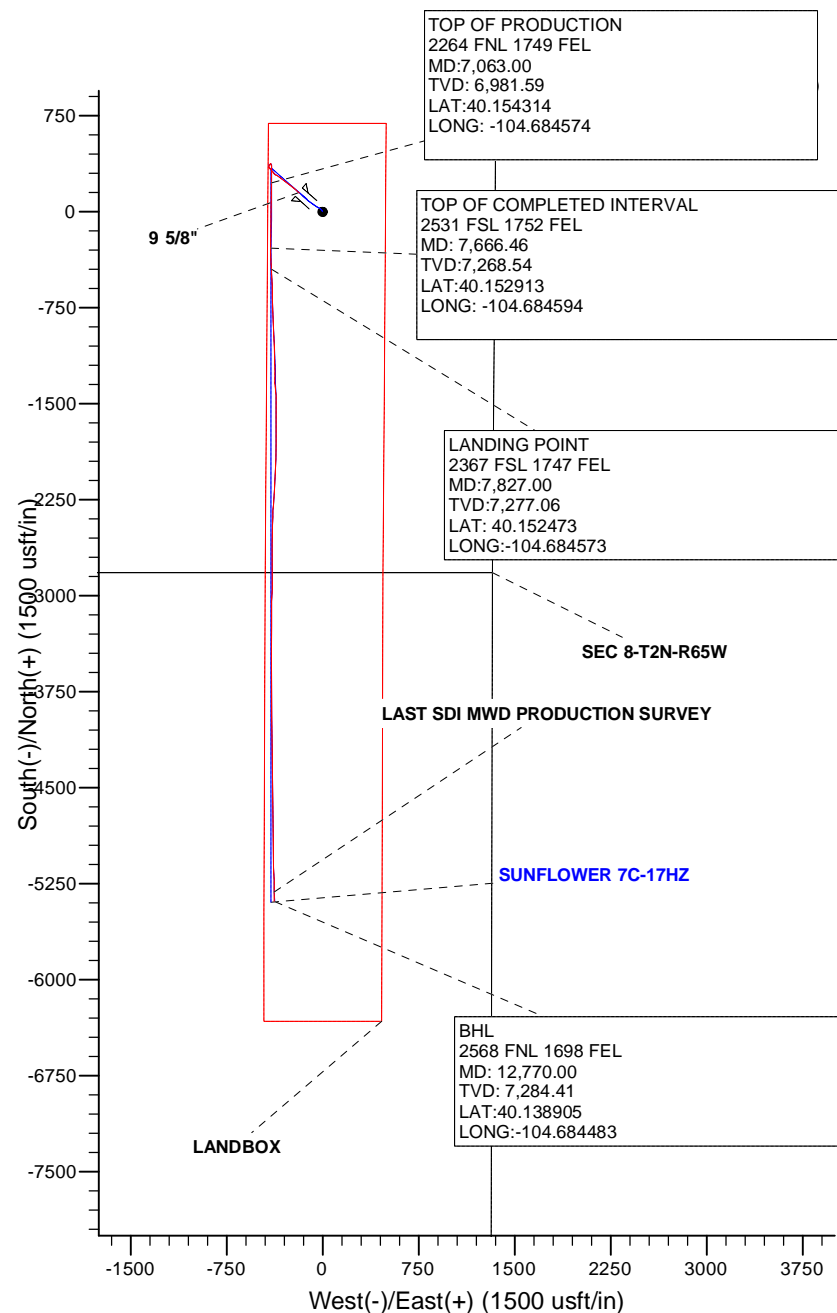
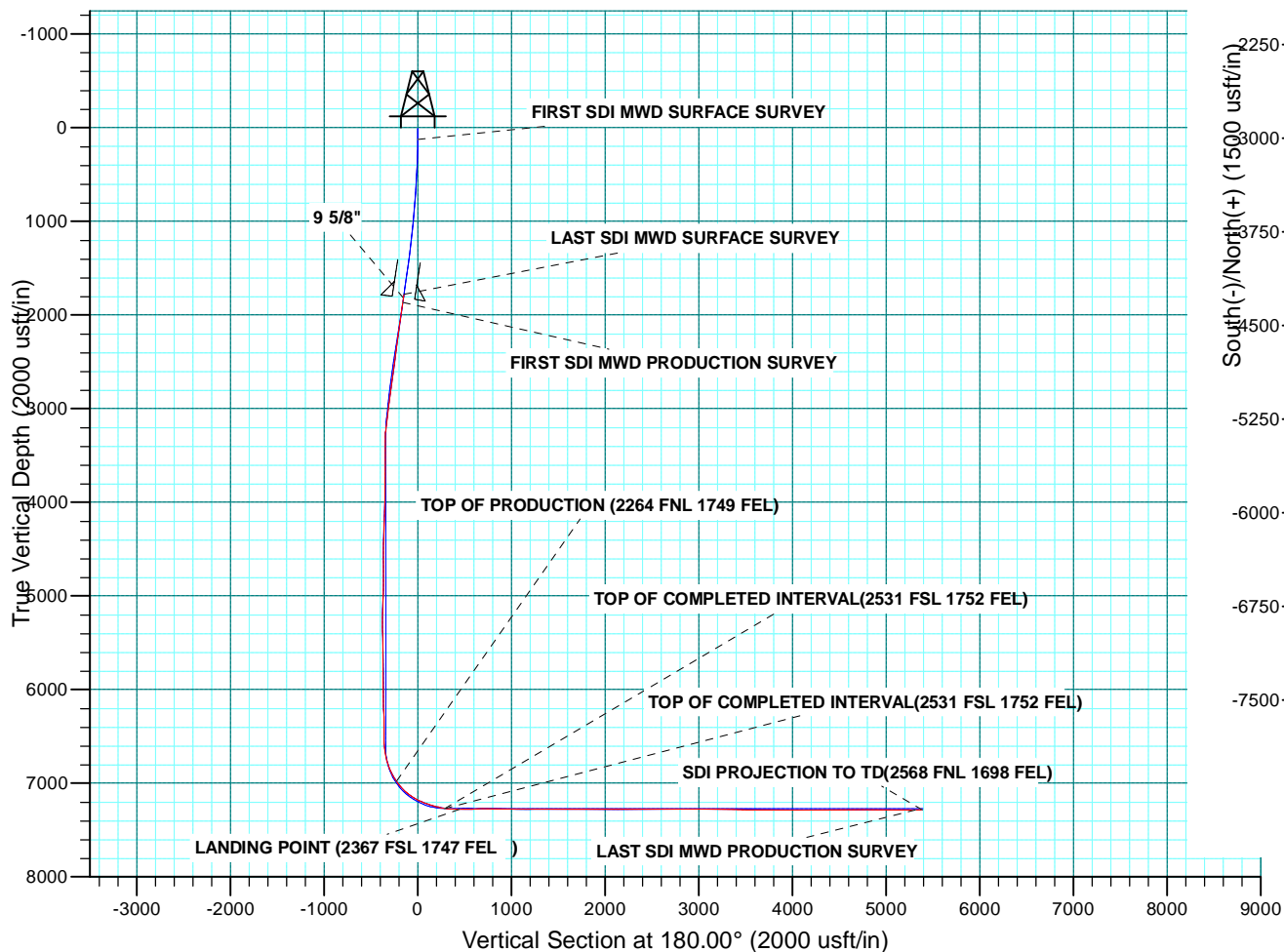


WELL DETAILS: SUNFLOWER 7C-17HZ					
GL 4901' & KB 20' @ 4921.00usft (PRECISION 461)					
+N/-S	+E/-W	Northing	Easting	Latitude	Longitude
0.00	0.00	14582858.65	1728954.14	40.153695	-104.683141

PROJECT DETAILS: WELD-NAD83-UTMFT13N	
Geodetic System:	Universal Transverse Mercator (US Survey Feet)
Datum:	North American Datum 1983
Ellipsoid:	GRS 1980
Zone:	Zone 13N (108 W to 102 W)
Location:	
System Datum:	Mean Sea Level



<b>Company:</b>	US ROCKIES WATTENBERG PLANNING	<b>Local Co-ordinate Reference:</b>	Well SUNFLOWER 7C-17HZ
<b>Project:</b>	WELD-NAD83-UTMFT13N	<b>TVD Reference:</b>	GL 4901' & KB 20' @ 4921.00usft (PRECISION 461)
<b>Site:</b>	2N-65W-08 Sunflower 24-8HZ Pad	<b>MD Reference:</b>	GL 4901' & KB 20' @ 4921.00usft (PRECISION 461)
<b>Well:</b>	SUNFLOWER 7C-17HZ	<b>North Reference:</b>	True
<b>Wellbore:</b>	Plan A	<b>Survey Calculation Method:</b>	Minimum Curvature
<b>Design:</b>	Plan A	<b>Database:</b>	Denver Sales

<b>Project</b>	WELD-NAD83-UTMFT13N		
<b>Map System:</b>	Universal Transverse Mercator (US Survey Feet)	<b>System Datum:</b>	Mean Sea Level
<b>Geo Datum:</b>	North American Datum 1983		
<b>Map Zone:</b>	Zone 13N (108 W to 102 W)		

Site		2N-65W-08 Sunflower 24-8HZ Pad						
Site Position:		Northing:	14,582,858.79	usft	Latitude:	40.153696		
From:	Lat/Long	Easting:	1,728,894.06	usft	Longitude:	-104.683356		
Position Uncertainty:	0.00	usft	Slot Radius:	13.200	in	Grid Convergence:	0.20	°

Well		SUNFLOWER 7C-17HZ				
Well Position	+N/-S	0.00 usft	Northing:	14,582,858.64 usft	Latitude:	40.153695
	+E/-W	0.00 usft	Easting:	1,728,954.14 usft	Longitude:	-104.683141
Position Uncertainty		3.28 usft	Wellhead Elevation:	0.00 usft	Ground Level:	4,901.00 usft

<b>Wellbore</b>	Plan A				
<b>Magnetics</b>	<b>Model Name</b>	<b>Sample Date</b>	<b>Declination (°)</b>	<b>Dip Angle (°)</b>	<b>Field Strength (nT)</b>
	HDGM	9/19/2015	8.40	66.68	52,520

<b>Design</b>	Plan A				
<b>Audit Notes:</b>					
<b>Version:</b>	1.0	<b>Phase:</b>	ACTUAL	<b>Tie On Depth:</b>	0.00
<b>Vertical Section:</b>	<b>Depth From (TVD) (usft)</b>	<b>+N/-S (usft)</b>	<b>+E/-W (usft)</b>	<b>Direction (°)</b>	
	0.00	0.00	0.00	180.00	

<b>Survey Program</b>	<b>Date</b>	12/14/2015			
<b>From (usft)</b>	<b>To (usft)</b>	<b>Survey (Wellbore)</b>	<b>Tool Name</b>	<b>Description</b>	
13.00	1,800.00	SDI MWD SURFACE (Plan A)	APC_ISCWSA REV 2 MWD	Fixed.v2:standard declination	
1,887.00	12,770.00	Survey #2 SDI MWD PRODUCTION (Plan	ISCWSA MWD	MWD - ISCWSA	

<b>Survey</b>										
<b>Measured Depth (usft)</b>	<b>Inclination (°)</b>	<b>Azimuth (°)</b>	<b>Vertical Depth (usft)</b>	<b>+N/-S (usft)</b>	<b>+E/-W (usft)</b>	<b>Vertical Section (usft)</b>	<b>Dogleg Rate (°/100usft)</b>	<b>Build Rate (°/100usft)</b>	<b>Turn Rate (°/100usft)</b>	
1,800.00	12.99	312.30	1,779.95	146.83	-179.02	-146.83	0.00	0.00	0.00	
1,841.00	12.77	311.44	1,819.92	152.93	-185.83	-152.93	0.71	-0.53	-2.10	
<b>9 5/8"</b>										
1,887.00	12.53	310.44	1,864.81	159.53	-193.44	-159.53	0.71	-0.53	-2.17	
<b>FIRST SDI MWD PRODUCTION SURVEY</b>										
1,982.00	12.41	310.31	1,957.57	172.82	-209.07	-172.82	0.13	-0.13	-0.14	
2,076.00	11.69	307.29	2,049.50	185.12	-224.35	-185.12	1.02	-0.77	-3.21	
2,171.00	12.24	308.59	2,142.43	197.24	-239.87	-197.24	0.64	0.58	1.37	

<b>Company:</b>	US ROCKIES WATTENBERG PLANNING	<b>Local Co-ordinate Reference:</b>	Well SUNFLOWER 7C-17HZ
<b>Project:</b>	WELD-NAD83-UTMFT13N	<b>TVD Reference:</b>	GL 4901' & KB 20' @ 4921.00usft (PRECISION 461)
<b>Site:</b>	2N-65W-08 Sunflower 24-8HZ Pad	<b>MD Reference:</b>	GL 4901' & KB 20' @ 4921.00usft (PRECISION 461)
<b>Well:</b>	SUNFLOWER 7C-17HZ	<b>North Reference:</b>	True
<b>Wellbore:</b>	Plan A	<b>Survey Calculation Method:</b>	Minimum Curvature
<b>Design:</b>	Plan A	<b>Database:</b>	Denver Sales

Survey										
Measured Depth (usft)	Inclination (°)	Azimuth (°)	Vertical Depth (usft)	+N/-S (usft)	+E/-W (usft)	Vertical Section (usft)	Dogleg Rate (°/100usft)	Build Rate (°/100usft)	Turn Rate (°/100usft)	
2,264.00	12.78	311.84	2,233.22	210.25	-255.24	-210.25	0.95	0.58	3.49	
2,359.00	12.73	308.85	2,325.88	223.82	-271.22	-223.82	0.70	-0.05	-3.15	
2,454.00	12.38	303.99	2,418.61	236.08	-287.82	-236.08	1.17	-0.37	-5.12	
2,550.00	13.14	302.80	2,512.24	247.75	-305.52	-247.75	0.84	0.79	-1.24	
2,645.00	13.67	302.14	2,604.65	259.57	-324.11	-259.57	0.58	0.56	-0.69	
2,740.00	13.62	306.35	2,696.97	272.17	-342.62	-272.17	1.05	-0.05	4.43	
2,835.00	12.81	307.07	2,789.46	285.15	-360.03	-285.15	0.87	-0.85	0.76	
2,930.00	11.50	316.81	2,882.34	298.40	-374.92	-298.40	2.56	-1.38	10.25	
3,025.00	10.64	317.74	2,975.57	311.80	-387.30	-311.80	0.92	-0.91	0.98	
3,120.00	9.38	320.53	3,069.12	324.27	-398.12	-324.27	1.42	-1.33	2.94	
3,215.00	8.58	319.04	3,162.95	335.59	-407.69	-335.59	0.88	-0.84	-1.57	
3,310.00	6.12	317.04	3,257.17	344.65	-415.78	-344.65	2.60	-2.59	-2.11	
3,405.00	2.45	294.76	3,351.89	349.21	-421.08	-349.21	4.17	-3.86	-23.45	
3,501.00	0.75	167.60	3,447.86	349.46	-422.81	-349.46	3.09	-1.77	-132.46	
3,596.00	1.23	176.24	3,542.85	347.83	-422.61	-347.83	0.53	0.51	9.09	
3,691.00	0.86	177.41	3,637.83	346.10	-422.51	-346.10	0.39	-0.39	1.23	
3,786.00	0.40	209.25	3,732.83	345.10	-422.64	-345.10	0.59	-0.48	33.52	
3,881.00	1.58	16.91	3,827.82	346.06	-422.42	-346.06	2.08	1.24	176.48	
3,976.00	2.21	25.98	3,922.77	348.96	-421.24	-348.96	0.73	0.66	9.55	
4,071.00	2.17	19.66	4,017.70	352.30	-419.83	-352.30	0.26	-0.04	-6.65	
4,167.00	2.33	14.81	4,113.62	355.90	-418.72	-355.90	0.26	0.17	-5.05	
4,262.00	1.98	19.20	4,208.56	359.32	-417.69	-359.32	0.41	-0.37	4.62	
4,357.00	1.95	15.96	4,303.50	362.42	-416.70	-362.42	0.12	-0.03	-3.41	
4,452.00	1.95	23.74	4,398.44	365.46	-415.61	-365.46	0.28	0.00	8.19	
4,547.00	0.68	344.67	4,493.42	367.48	-415.11	-367.48	1.56	-1.34	-41.13	
4,642.00	0.65	309.90	4,588.41	368.37	-415.67	-368.37	0.42	-0.03	-36.60	
4,736.00	0.51	74.98	4,682.41	368.82	-415.67	-368.82	1.10	-0.15	133.06	
4,832.00	0.62	114.50	4,778.41	368.72	-414.79	-368.72	0.41	0.11	41.17	
4,927.00	1.05	74.59	4,873.40	368.73	-413.48	-368.73	0.74	0.45	-42.01	
5,021.00	1.44	43.14	4,967.38	369.82	-411.84	-369.82	0.82	0.41	-33.46	
5,116.00	1.93	35.63	5,062.33	372.00	-410.09	-372.00	0.56	0.52	-7.91	
5,211.00	2.51	36.48	5,157.26	374.97	-407.93	-374.97	0.61	0.61	0.89	
5,305.00	2.16	74.54	5,251.19	377.10	-404.99	-377.10	1.66	-0.37	40.49	
5,400.00	1.43	141.53	5,346.15	376.64	-402.53	-376.64	2.18	-0.77	70.52	
5,495.00	1.07	188.96	5,441.13	374.84	-401.93	-374.84	1.11	-0.38	49.93	
5,589.00	0.98	175.87	5,535.12	373.17	-402.01	-373.17	0.27	-0.10	-13.93	
5,685.00	0.97	181.13	5,631.10	371.54	-401.97	-371.54	0.09	-0.01	5.48	
5,780.00	0.74	161.32	5,726.09	370.16	-401.79	-370.16	0.39	-0.24	-20.85	
5,875.00	0.69	142.21	5,821.08	369.12	-401.24	-369.12	0.26	-0.05	-20.12	
5,970.00	0.47	165.77	5,916.08	368.29	-400.79	-368.29	0.34	-0.23	24.80	
6,064.00	0.85	167.60	6,010.07	367.24	-400.55	-367.24	0.40	0.40	1.95	
6,159.00	0.98	152.70	6,105.06	365.83	-400.03	-365.83	0.28	0.14	-15.68	

<b>Company:</b>	US ROCKIES WATTENBERG PLANNING	<b>Local Co-ordinate Reference:</b>	Well SUNFLOWER 7C-17HZ
<b>Project:</b>	WELD-NAD83-UTMFT13N	<b>TVD Reference:</b>	GL 4901' & KB 20' @ 4921.00usft (PRECISION 461)
<b>Site:</b>	2N-65W-08 Sunflower 24-8HZ Pad	<b>MD Reference:</b>	GL 4901' & KB 20' @ 4921.00usft (PRECISION 461)
<b>Well:</b>	SUNFLOWER 7C-17HZ	<b>North Reference:</b>	True
<b>Wellbore:</b>	Plan A	<b>Survey Calculation Method:</b>	Minimum Curvature
<b>Design:</b>	Plan A	<b>Database:</b>	Denver Sales

Survey										
Measured Depth (usft)	Inclination (°)	Azimuth (°)	Vertical Depth (usft)	+N/-S (usft)	+E/-W (usft)	Vertical Section (usft)	Dogleg Rate (°/100usft)	Build Rate (°/100usft)	Turn Rate (°/100usft)	
6,254.00	0.81	147.10	6,200.05	364.54	-399.29	-364.54	0.20	-0.18	-5.89	
6,348.00	0.77	172.23	6,294.04	363.36	-398.84	-363.36	0.37	-0.04	26.73	
6,443.00	1.46	181.51	6,389.02	361.52	-398.79	-361.52	0.75	0.73	9.77	
6,538.00	0.88	181.03	6,484.00	359.58	-398.83	-359.58	0.61	-0.61	-0.51	
6,633.00	1.05	124.02	6,578.99	358.36	-398.12	-358.36	0.98	0.18	-60.01	
6,728.00	10.14	182.06	6,673.46	349.50	-397.70	-349.50	10.13	9.57	61.09	
6,823.00	16.27	179.12	6,765.91	327.81	-397.80	-327.81	6.49	6.45	-3.09	
6,918.00	22.59	180.60	6,855.45	296.23	-397.78	-296.23	6.67	6.65	1.56	
7,013.00	31.94	183.37	6,939.81	252.80	-399.46	-252.80	9.93	9.84	2.92	
7,063.00	34.68	180.45	6,981.59	225.37	-400.35	-225.37	6.34	5.47	-5.84	
TOP OF PRODUCTION (2264 FNL 1749 FEL)										
7,108.00	37.19	178.15	7,018.03	198.97	-400.01	-198.97	6.34	5.59	-5.11	
7,203.00	47.43	179.88	7,088.19	135.12	-399.00	-135.12	10.85	10.78	1.82	
7,297.00	57.59	182.11	7,145.33	60.65	-400.40	-60.65	10.97	10.81	2.37	
7,391.00	64.69	179.21	7,190.68	-21.61	-401.27	21.61	8.02	7.55	-3.09	
7,486.00	73.69	182.14	7,224.40	-110.30	-402.39	110.30	9.90	9.47	3.08	
7,581.00	73.53	182.01	7,251.21	-201.38	-405.69	201.38	0.21	-0.17	-0.14	
7,666.46	83.05	178.46	7,268.54	-284.95	-405.99	284.95	11.86	11.15	-4.15	
TOP OF COMPLETED INTERVAL(2531 FSL 1752 FEL)										
7,676.00	84.12	178.08	7,269.60	-294.42	-405.70	294.42	11.86	11.17	-4.02	
7,771.00	88.39	177.81	7,275.81	-389.14	-402.30	389.14	4.50	4.49	-0.28	
7,827.00	89.05	177.54	7,277.06	-445.08	-400.03	445.08	1.28	1.18	-0.49	
LANDING POINT (2367 FSL 1747 FEL )										
7,865.00	89.50	177.35	7,277.54	-483.04	-398.33	483.04	1.28	1.18	-0.49	
7,960.00	90.81	178.10	7,277.28	-577.96	-394.56	577.96	1.59	1.38	0.79	
8,055.00	91.18	178.99	7,275.63	-672.91	-392.15	672.91	1.01	0.39	0.94	
8,150.00	90.27	178.31	7,274.43	-767.88	-389.91	767.88	1.20	-0.96	-0.72	
8,245.00	88.66	174.69	7,275.32	-862.68	-384.11	862.68	4.17	-1.69	-3.81	
8,340.00	88.59	177.67	7,277.60	-957.43	-377.79	957.43	3.14	-0.07	3.14	
8,436.00	89.26	178.69	7,279.40	-1,053.36	-374.74	1,053.36	1.27	0.70	1.06	
8,530.00	90.91	179.63	7,279.26	-1,147.35	-373.36	1,147.35	2.02	1.76	1.00	
8,625.00	91.14	179.80	7,277.56	-1,242.33	-372.89	1,242.33	0.30	0.24	0.18	
8,720.00	88.86	177.60	7,277.56	-1,337.29	-370.73	1,337.29	3.33	-2.40	-2.32	
8,815.00	89.46	177.85	7,278.95	-1,432.21	-366.96	1,432.21	0.68	0.63	0.26	
8,910.00	89.53	179.18	7,279.79	-1,527.17	-364.50	1,527.17	1.40	0.07	1.40	
9,005.00	89.50	179.28	7,280.59	-1,622.16	-363.23	1,622.16	0.11	-0.03	0.11	
9,100.00	89.93	179.65	7,281.06	-1,717.15	-362.34	1,717.15	0.60	0.45	0.39	
9,195.00	90.34	180.93	7,280.84	-1,812.15	-362.82	1,812.15	1.41	0.43	1.35	
9,290.00	90.07	182.39	7,280.50	-1,907.11	-365.57	1,907.11	1.56	-0.28	1.54	
9,385.00	89.63	182.29	7,280.75	-2,002.03	-369.45	2,002.03	0.47	-0.46	-0.11	
9,480.00	89.60	182.20	7,281.39	-2,096.95	-373.17	2,096.95	0.10	-0.03	-0.09	
9,574.00	90.57	183.57	7,281.25	-2,190.83	-377.90	2,190.83	1.79	1.03	1.46	

<b>Company:</b>	US ROCKIES WATTENBERG PLANNING	<b>Local Co-ordinate Reference:</b>	Well SUNFLOWER 7C-17HZ
<b>Project:</b>	WELD-NAD83-UTMFT13N	<b>TVD Reference:</b>	GL 4901' & KB 20' @ 4921.00usft (PRECISION 461)
<b>Site:</b>	2N-65W-08 Sunflower 24-8HZ Pad	<b>MD Reference:</b>	GL 4901' & KB 20' @ 4921.00usft (PRECISION 461)
<b>Well:</b>	SUNFLOWER 7C-17HZ	<b>North Reference:</b>	True
<b>Wellbore:</b>	Plan A	<b>Survey Calculation Method:</b>	Minimum Curvature
<b>Design:</b>	Plan A	<b>Database:</b>	Denver Sales

Survey										
Measured Depth (usft)	Inclination (°)	Azimuth (°)	Vertical Depth (usft)	+N/-S (usft)	+E/-W (usft)	Vertical Section (usft)	Dogleg Rate (°/100usft)	Build Rate (°/100usft)	Turn Rate (°/100usft)	
9,669.00	90.27	182.87	7,280.55	-2,285.68	-383.24	2,285.68	0.80	-0.32	-0.74	
9,764.00	90.84	181.67	7,279.63	-2,380.59	-387.00	2,380.59	1.40	0.60	-1.26	
9,859.00	90.03	182.50	7,278.91	-2,475.53	-390.46	2,475.53	1.22	-0.85	0.87	
9,954.00	91.07	181.96	7,278.00	-2,570.45	-394.15	2,570.45	1.23	1.09	-0.57	
10,048.00	89.87	180.32	7,277.23	-2,664.42	-396.02	2,664.42	2.16	-1.28	-1.74	
10,143.00	91.21	178.82	7,276.33	-2,759.41	-395.31	2,759.41	2.12	1.41	-1.58	
10,238.00	91.11	180.65	7,274.41	-2,854.39	-394.87	2,854.39	1.93	-0.11	1.93	
10,333.00	88.73	180.76	7,274.54	-2,949.37	-396.04	2,949.37	2.51	-2.51	0.12	
10,427.00	90.00	180.52	7,275.58	-3,043.36	-397.09	3,043.36	1.37	1.35	-0.26	
10,522.00	89.06	180.70	7,276.36	-3,138.35	-398.10	3,138.35	1.01	-0.99	0.19	
10,616.00	90.37	180.77	7,276.83	-3,232.34	-399.31	3,232.34	1.40	1.39	0.07	
10,710.00	88.66	180.49	7,277.63	-3,326.33	-400.34	3,326.33	1.84	-1.82	-0.30	
10,805.00	88.26	179.58	7,280.18	-3,421.29	-400.40	3,421.29	1.05	-0.42	-0.96	
10,899.00	89.43	180.37	7,282.07	-3,515.27	-400.36	3,515.27	1.50	1.24	0.84	
10,994.00	90.03	179.67	7,282.52	-3,610.27	-400.39	3,610.27	0.97	0.63	-0.74	
11,090.00	89.83	179.02	7,282.64	-3,706.26	-399.29	3,706.26	0.71	-0.21	-0.68	
11,182.00	89.06	179.25	7,283.53	-3,798.24	-397.90	3,798.24	0.87	-0.84	0.25	
11,275.00	89.19	179.22	7,284.95	-3,891.22	-396.66	3,891.22	0.14	0.14	-0.03	
11,366.00	90.13	179.33	7,285.49	-3,982.21	-395.51	3,982.21	1.04	1.03	0.12	
11,461.00	88.86	179.87	7,286.33	-4,077.21	-394.85	4,077.21	1.45	-1.34	0.57	
11,556.00	90.54	180.05	7,286.82	-4,172.20	-394.78	4,172.20	1.78	1.77	0.19	
11,651.00	89.30	179.71	7,286.96	-4,267.20	-394.58	4,267.20	1.35	-1.31	-0.36	
11,746.00	90.10	179.05	7,287.45	-4,362.19	-393.55	4,362.19	1.09	0.84	-0.69	
11,841.00	91.18	179.12	7,286.39	-4,457.17	-392.04	4,457.17	1.14	1.14	0.07	
11,936.00	91.48	178.59	7,284.19	-4,552.13	-390.14	4,552.13	0.64	0.32	-0.56	
12,031.00	91.11	179.18	7,282.04	-4,647.08	-388.29	4,647.08	0.73	-0.39	0.62	
12,126.00	90.23	179.88	7,280.93	-4,742.07	-387.51	4,742.07	1.18	-0.93	0.74	
12,222.00	89.80	179.59	7,280.91	-4,838.07	-387.07	4,838.07	0.54	-0.45	-0.30	
12,317.00	89.09	179.22	7,281.83	-4,933.06	-386.08	4,933.06	0.84	-0.75	-0.39	
12,412.00	90.67	179.58	7,282.02	-5,028.05	-385.09	5,028.05	1.71	1.66	0.38	
12,507.00	88.22	178.40	7,282.94	-5,123.02	-383.41	5,123.02	2.86	-2.58	-1.24	
12,603.00	88.99	177.90	7,285.28	-5,218.94	-380.32	5,218.94	0.96	0.80	-0.52	
12,697.00	90.81	178.26	7,285.45	-5,312.89	-377.17	5,312.89	1.97	1.94	0.38	
LAST SDI MWD PRODUCTION SURVEY										
12,770.00	90.81	178.26	7,284.41	-5,385.85	-374.95	5,385.85	0.00	0.00	0.00	
SDI PROJECTION TO TD(2568 FNL 1698 FEL)										

<b>Company:</b>	US ROCKIES WATTENBERG PLANNING	<b>Local Co-ordinate Reference:</b>	Well SUNFLOWER 7C-17HZ
<b>Project:</b>	WELD-NAD83-UTMFT13N	<b>TVD Reference:</b>	GL 4901' & KB 20' @ 4921.00usft (PRECISION 461)
<b>Site:</b>	2N-65W-08 Sunflower 24-8HZ Pad	<b>MD Reference:</b>	GL 4901' & KB 20' @ 4921.00usft (PRECISION 461)
<b>Well:</b>	SUNFLOWER 7C-17HZ	<b>North Reference:</b>	True
<b>Wellbore:</b>	Plan A	<b>Survey Calculation Method:</b>	Minimum Curvature
<b>Design:</b>	Plan A	<b>Database:</b>	Denver Sales

Casing Points					
Measured Depth (usft)	Vertical Depth (usft)	Name		Casing Diameter (in)	Hole Diameter (in)
1,841.00	1,819.92	9 5/8"		9.625	13.500

Survey Annotations					
Measured Depth (usft)	Vertical Depth (usft)	Local Coordinates		Comment	
		+N/-S (usft)	+E/-W (usft)		
1,887.00	1,864.81	159.53	-193.44	FIRST SDI MWD PRODUCTION SURVEY	
7,063.00	6,981.59	225.37	-400.35	TOP OF PRODUCTION (2264 FNL 1749 FEL)	
7,666.46	7,268.54	-284.95	-405.99	TOP OF COMPLETED INTERVAL(2531 FSL 1752 FEL)	
7,827.00	7,277.06	-445.08	-400.03	LANDING POINT (2367 FSL 1747 FEL )	
12,697.00	7,285.45	-5,312.89	-377.17	LAST SDI MWD PRODUCTION SURVEY	
12,770.00	7,284.41	-5,385.85	-374.95	SDI PROJECTION TO TD(2568 FNL 1698 FEL)	

Checked By: _____	Approved By: _____	Date: _____
-------------------	--------------------	-------------