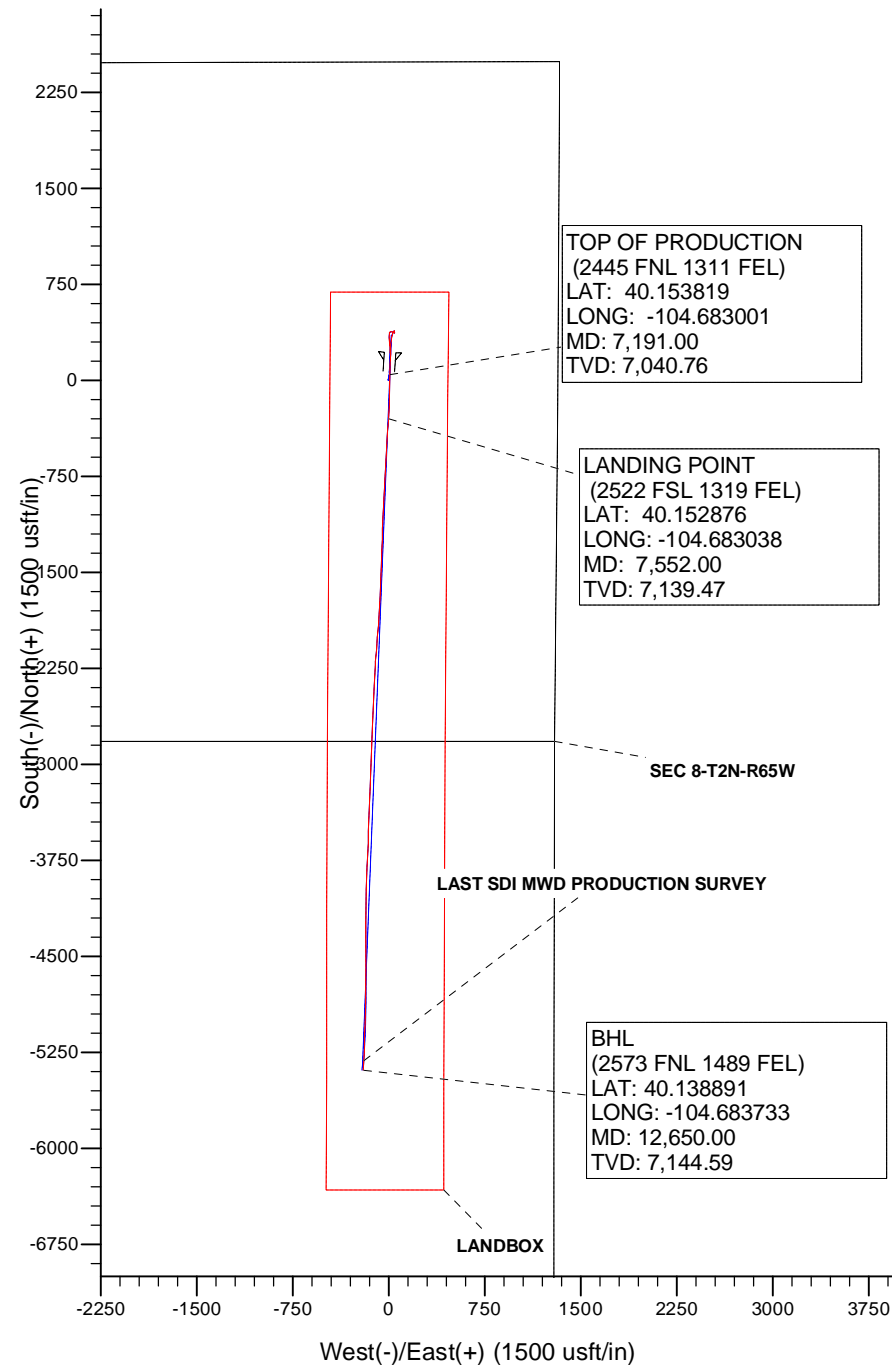
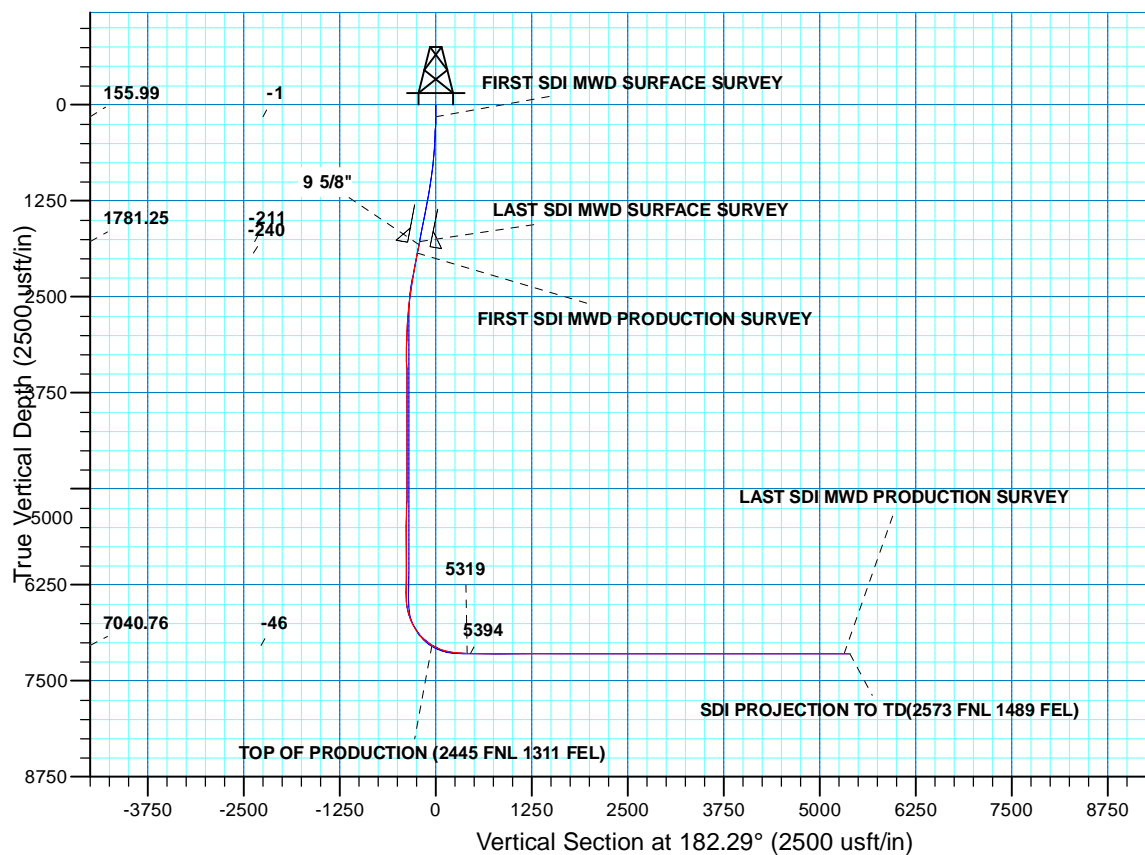




Project: WELD-NAD83-UTMFT13N  
Site: 2N-65W-08 Sunflower 24-8HZ Pad  
Well: SUNFLOWER 24N-17HZ  
Wellbore: Plan A  
Design: Plan A



WELL DETAILS: SUNFLOWER 24N-17HZ					
GL 4901' & KB 20' @ 4921.00usft (PRECISION 461)					
+N/-S	+E/-W	Northing	Easting	Latitude	Longitude
0.00	0.00	14582858.75	1728984.04	40.153695	-104.683034



<b>Company:</b>	US ROCKIES WATTENBERG PLANNING	<b>Local Co-ordinate Reference:</b>	Well SUNFLOWER 24N-17HZ
<b>Project:</b>	WELD-NAD83-UTMFT13N	<b>TVD Reference:</b>	GL 4901' & KB 20' @ 4921.00usft (PRECISION 461)
<b>Site:</b>	2N-65W-08 Sunflower 24-8HZ Pad	<b>MD Reference:</b>	GL 4901' & KB 20' @ 4921.00usft (PRECISION 461)
<b>Well:</b>	SUNFLOWER 24N-17HZ	<b>North Reference:</b>	True
<b>Wellbore:</b>	Plan A	<b>Survey Calculation Method:</b>	Minimum Curvature
<b>Design:</b>	Plan A	<b>Database:</b>	Denver Sales

Project		WELD-NAD83-UTMFT13N	
Map System:	Universal Transverse Mercator (US Survey Feet)	System Datum:	Mean Sea Level
Geo Datum:	North American Datum 1983		
Map Zone:	Zone 13N (108 W to 102 W)		

Site		2N-65W-08 Sunflower 24-8HZ Pad				
Site Position:		Northing:	14,582,858.79	usft	Latitude:	40.153696
From:	Lat/Long	Easting:	1,728,894.06	usft	Longitude:	-104.683356
Position Uncertainty:		0.00	usft	Slot Radius:	13.200	in
				Grid Convergence:	0.20	°

Well	SUNFLOWER 24N-17HZ					
Well Position	+N/-S	0.00 usft	Northing:	14,582,858.75 usft	Latitude:	40.153695
	+E/-W	0.00 usft	Easting:	1,728,984.04 usft	Longitude:	-104.683034
Position Uncertainty		3.28 usft	Wellhead Elevation:	0.00 usft	Ground Level:	4,901.00 usft

Wellbore	Plan A				
Magnetics	Model Name	Sample Date	Declination (°)	Dip Angle (°)	Field Strength (nT)
	HDGM	9/19/2015	8.40	66.68	52,520

Design	Plan A				
Audit Notes:					
Version:	1.0	Phase:	ACTUAL	Tie On Depth:	0.00
Vertical Section:	Depth From (TVD) (usft)	+N/-S (usft)	+E/-W (usft)	Direction (°)	
	0.00	0.00	0.00	182.29	

Survey Program		Date	11/11/2015	
From (usft)	To (usft)	Survey (Wellbore)	Tool Name	Description
13.00	1,798.00	SDI MWD SURFACE (Plan A)	APC_ISCWSA REV 2 MWD	Fixed:v2:standard declination
1,953.00	12,650.00	Survey #2 SDI MWD PRODUCTION (Plan	APC_ISCWSA REV 2 MWD+	Fixed:v2:crustal field declination

Survey									
Measured Depth (usft)	Inclination (°)	Azimuth (°)	Vertical Depth (usft)	+N/-S (usft)	+E/-W (usft)	Vertical Section (usft)	Dogleg Rate (°/100usft)	Build Rate (°/100usft)	Turn Rate (°/100usft)
0.00	0.00	0.00	0.00	0.00	0.00	0.00	0.00	0.00	0.00
13.00	0.00	0.00	13.00	0.00	0.00	0.00	0.00	0.00	0.00
156.00	0.90	312.05	155.99	0.75	-0.83	-0.72	0.63	0.63	0.00
FIRST SDI MWD SURFACE SURVEY									
247.00	1.45	358.69	246.98	2.38	-1.39	-2.32	1.16	0.60	51.25
340.00	2.44	9.95	339.92	5.51	-1.08	-5.46	1.14	1.06	12.11
430.00	3.25	10.56	429.81	9.90	-0.28	-9.88	0.90	0.90	0.68
520.00	3.80	17.22	519.64	15.26	1.07	-15.29	0.76	0.61	7.40

<b>Company:</b>	US ROCKIES WATTENBERG PLANNING	<b>Local Co-ordinate Reference:</b>	Well SUNFLOWER 24N-17HZ
<b>Project:</b>	WELD-NAD83-UTMFT13N	<b>TVD Reference:</b>	GL 4901' & KB 20' @ 4921.00usft (PRECISION 461)
<b>Site:</b>	2N-65W-08 Sunflower 24-8HZ Pad	<b>MD Reference:</b>	GL 4901' & KB 20' @ 4921.00usft (PRECISION 461)
<b>Well:</b>	SUNFLOWER 24N-17HZ	<b>North Reference:</b>	True
<b>Wellbore:</b>	Plan A	<b>Survey Calculation Method:</b>	Minimum Curvature
<b>Design:</b>	Plan A	<b>Database:</b>	Denver Sales

Survey									
Measured Depth (usft)	Inclination (°)	Azimuth (°)	Vertical Depth (usft)	+N/-S (usft)	+E/-W (usft)	Vertical Section (usft)	Dogleg Rate (°/100usft)	Build Rate (°/100usft)	Turn Rate (°/100usft)
610.00	4.11	11.13	609.43	21.27	2.58	-21.36	0.58	0.34	-6.77
700.00	4.81	356.82	699.16	28.21	2.99	-28.30	1.45	0.78	-15.90
790.00	5.67	359.92	788.78	36.42	2.78	-36.50	1.01	0.96	3.44
880.00	7.19	3.63	878.21	46.49	3.13	-46.57	1.75	1.69	4.12
970.00	8.40	5.07	967.38	58.66	4.06	-58.77	1.36	1.34	1.60
1,060.00	9.81	5.85	1,056.24	72.83	5.43	-72.99	1.57	1.57	0.87
1,150.00	10.36	6.83	1,144.85	88.49	7.17	-88.71	0.64	0.61	1.09
1,240.00	10.47	0.94	1,233.37	104.71	8.27	-104.95	1.19	0.12	-6.54
1,330.00	10.84	356.45	1,321.82	121.33	7.88	-121.55	1.01	0.41	-4.99
1,421.00	10.70	0.96	1,411.22	138.32	7.49	-138.51	0.94	-0.15	4.96
1,511.00	10.90	1.58	1,499.62	155.18	7.86	-155.37	0.26	0.22	0.69
1,601.00	11.33	1.59	1,587.94	172.52	8.34	-172.72	0.48	0.48	0.01
1,691.00	11.02	2.63	1,676.23	189.95	8.98	-190.16	0.41	-0.34	1.16
1,781.00	11.05	4.61	1,764.57	207.14	10.07	-207.38	0.42	0.03	2.20
1,798.00	11.00	4.80	1,781.25	210.38	10.34	-210.63	0.36	-0.29	1.12
LAST SDI MWD SURFACE SURVEY									
1,839.00	10.96	3.04	1,821.50	218.17	10.87	-218.43	0.83	-0.10	-4.30
9 5/8"									
1,953.00	10.90	358.08	1,933.44	239.76	11.08	-240.02	0.83	-0.05	-4.35
FIRST SDI MWD PRODUCTION SURVEY									
2,048.00	10.43	352.20	2,026.80	257.26	9.62	-257.44	1.25	-0.49	-6.19
2,142.00	9.88	357.90	2,119.33	273.75	8.17	-273.86	1.22	-0.59	6.06
2,236.00	9.75	356.11	2,211.95	289.75	7.33	-289.81	0.35	-0.14	-1.90
2,331.00	9.22	351.36	2,305.65	305.30	5.64	-305.28	0.99	-0.56	-5.00
2,426.00	8.63	359.31	2,399.51	319.95	4.41	-319.87	1.44	-0.62	8.37
2,521.00	8.19	355.10	2,493.49	333.82	3.75	-333.71	0.80	-0.46	-4.43
2,616.00	6.39	0.99	2,587.72	345.85	3.26	-345.71	2.05	-1.89	6.20
2,712.00	5.60	10.11	2,683.19	355.80	4.18	-355.69	1.29	-0.82	9.50
2,806.00	5.34	4.20	2,776.76	364.68	5.30	-364.60	0.66	-0.28	-6.29
2,902.00	3.52	20.41	2,872.48	371.90	6.66	-371.87	2.28	-1.90	16.89
2,996.00	3.05	46.76	2,966.33	376.32	9.49	-376.40	1.67	-0.50	28.03
3,091.00	2.71	39.62	3,061.21	379.78	12.76	-379.99	0.52	-0.36	-7.52
3,187.00	2.66	59.85	3,157.10	382.65	16.13	-382.99	0.98	-0.05	21.07
3,282.00	3.26	113.47	3,251.99	382.68	20.52	-383.19	2.87	0.63	56.44
3,377.00	2.88	115.55	3,346.86	380.57	25.15	-381.27	0.42	-0.40	2.19
3,472.00	2.82	114.18	3,441.74	378.59	29.43	-379.46	0.10	-0.06	-1.44
3,567.00	2.66	111.28	3,536.63	376.83	33.62	-377.87	0.22	-0.17	-3.05
3,662.00	2.59	106.73	3,631.53	375.41	37.73	-376.62	0.23	-0.07	-4.79
3,757.00	0.78	120.86	3,726.49	374.46	40.34	-375.77	1.94	-1.91	14.87
3,852.00	0.22	67.92	3,821.48	374.20	41.06	-375.54	0.71	-0.59	-55.73
3,947.00	0.23	110.08	3,916.48	374.20	41.41	-375.56	0.17	0.01	44.38
4,043.00	0.30	129.79	4,012.48	373.97	41.79	-375.35	0.12	0.07	20.53

<b>Company:</b>	US ROCKIES WATTENBERG PLANNING	<b>Local Co-ordinate Reference:</b>	Well SUNFLOWER 24N-17HZ
<b>Project:</b>	WELD-NAD83-UTMFT13N	<b>TVD Reference:</b>	GL 4901' & KB 20' @ 4921.00usft (PRECISION 461)
<b>Site:</b>	2N-65W-08 Sunflower 24-8HZ Pad	<b>MD Reference:</b>	GL 4901' & KB 20' @ 4921.00usft (PRECISION 461)
<b>Well:</b>	SUNFLOWER 24N-17HZ	<b>North Reference:</b>	True
<b>Wellbore:</b>	Plan A	<b>Survey Calculation Method:</b>	Minimum Curvature
<b>Design:</b>	Plan A	<b>Database:</b>	Denver Sales

Survey									
Measured Depth (usft)	Inclination (°)	Azimuth (°)	Vertical Depth (usft)	+N/-S (usft)	+E/-W (usft)	Vertical Section (usft)	Dogleg Rate (°/100usft)	Build Rate (°/100usft)	Turn Rate (°/100usft)
4,138.00	0.44	80.06	4,107.48	373.88	42.34	-375.27	0.35	0.15	-52.35
4,233.00	0.45	84.53	4,202.48	373.98	43.07	-375.40	0.04	0.01	4.71
4,328.00	0.91	88.82	4,297.47	374.03	44.19	-375.50	0.49	0.48	4.52
4,423.00	1.13	76.18	4,392.46	374.27	45.86	-375.80	0.33	0.23	-13.31
4,518.00	0.90	205.25	4,487.45	373.82	46.45	-375.37	1.93	-0.24	135.86
4,613.00	0.77	216.86	4,582.44	372.63	45.75	-374.16	0.22	-0.14	12.22
4,708.00	0.34	215.45	4,677.43	371.89	45.20	-373.40	0.45	-0.45	-1.48
4,803.00	0.28	256.66	4,772.43	371.61	44.81	-373.10	0.24	-0.06	43.38
4,898.00	0.57	336.43	4,867.43	371.99	44.40	-373.46	0.62	0.31	83.97
4,992.00	1.10	352.66	4,961.42	373.31	44.09	-374.77	0.61	0.56	17.27
5,088.00	1.58	358.90	5,057.39	375.55	43.95	-377.00	0.52	0.50	6.50
5,182.00	1.47	349.46	5,151.36	378.03	43.71	-379.47	0.29	-0.12	-10.04
5,277.00	1.48	356.28	5,246.33	380.45	43.40	-381.88	0.18	0.01	7.18
5,371.00	1.68	7.00	5,340.29	383.03	43.49	-384.46	0.38	0.21	11.40
5,467.00	0.71	70.26	5,436.28	384.63	44.22	-386.09	1.56	-1.01	65.90
5,561.00	0.77	96.15	5,530.27	384.76	45.40	-386.26	0.36	0.06	27.54
5,656.00	0.93	96.07	5,625.26	384.61	46.80	-386.17	0.17	0.17	-0.08
5,751.00	0.67	92.00	5,720.25	384.51	48.12	-386.12	0.28	-0.27	-4.28
5,846.00	0.84	265.78	5,815.24	384.44	47.98	-386.05	1.59	0.18	182.93
5,941.00	1.21	264.84	5,910.23	384.29	46.29	-385.84	0.39	0.39	-0.99
6,035.00	0.86	269.53	6,004.21	384.20	44.60	-385.67	0.38	-0.37	4.99
6,131.00	0.59	263.66	6,100.21	384.14	43.38	-385.56	0.29	-0.28	-6.11
6,225.00	0.14	273.21	6,194.20	384.09	42.79	-385.49	0.48	-0.48	10.16
6,320.00	0.11	15.60	6,289.20	384.19	42.70	-385.58	0.21	-0.03	107.78
6,415.00	0.41	270.66	6,384.20	384.28	42.38	-385.66	0.47	0.32	-110.46
6,510.00	4.40	213.16	6,479.10	381.23	40.05	-382.52	4.41	4.20	-60.53
6,604.00	13.00	202.06	6,571.94	368.39	34.09	-369.45	9.28	9.15	-11.81
6,699.00	19.70	192.90	6,663.06	342.84	26.50	-343.63	7.54	7.05	-9.64
6,795.00	25.92	185.57	6,751.53	306.14	20.84	-306.73	7.11	6.48	-7.64
6,890.00	32.53	180.69	6,834.40	259.88	18.51	-260.41	7.39	6.96	-5.14
6,984.00	40.07	182.45	6,910.11	204.30	16.91	-204.81	8.10	8.02	1.87
7,079.00	50.47	183.12	6,976.87	136.98	13.60	-137.42	10.96	10.95	0.71
7,174.00	58.46	182.34	7,032.04	59.83	9.95	-60.18	8.44	8.41	-0.82
7,191.00	59.84	181.79	7,040.76	45.24	9.43	-45.58	8.57	8.11	-3.24
TOP OF PRODUCTION (2445 FNL 1311 FEL)									
7,269.00	66.19	179.44	7,076.14	-24.22	8.72	23.85	8.57	8.14	-3.01
7,362.00	73.77	181.29	7,107.96	-111.53	8.13	111.12	8.36	8.15	1.99
7,457.00	81.36	183.15	7,128.40	-204.16	4.52	203.81	8.21	7.99	1.96
7,552.00	85.26	183.67	7,139.47	-298.33	-1.10	298.13	4.14	4.11	0.55
LANDING POINT (2522 FSL 1319 FEL)									
7,647.00	88.42	183.61	7,144.70	-392.98	-7.12	392.95	3.33	3.33	-0.06
7,742.00	88.66	183.36	7,147.12	-487.77	-12.89	487.90	0.36	0.25	-0.26

<b>Company:</b>	US ROCKIES WATTENBERG PLANNING	<b>Local Co-ordinate Reference:</b>	Well SUNFLOWER 24N-17HZ
<b>Project:</b>	WELD-NAD83-UTMFT13N	<b>TVD Reference:</b>	GL 4901' & KB 20' @ 4921.00usft (PRECISION 461)
<b>Site:</b>	2N-65W-08 Sunflower 24-8HZ Pad	<b>MD Reference:</b>	GL 4901' & KB 20' @ 4921.00usft (PRECISION 461)
<b>Well:</b>	SUNFLOWER 24N-17HZ	<b>North Reference:</b>	True
<b>Wellbore:</b>	Plan A	<b>Survey Calculation Method:</b>	Minimum Curvature
<b>Design:</b>	Plan A	<b>Database:</b>	Denver Sales

Survey										
Measured Depth (usft)	Inclination (°)	Azimuth (°)	Vertical Depth (usft)	+N/-S (usft)	+E/-W (usft)	Vertical Section (usft)	Dogleg Rate (°/100usft)	Build Rate (°/100usft)	Turn Rate (°/100usft)	
7,836.00	89.13	183.37	7,148.94	-581.59	-18.41	581.86	0.50	0.50	0.01	
7,931.00	89.43	182.79	7,150.13	-676.45	-23.51	676.85	0.69	0.32	-0.61	
8,026.00	89.80	182.52	7,150.77	-771.34	-27.91	771.84	0.48	0.39	-0.28	
8,121.00	90.44	183.27	7,150.57	-866.22	-32.71	866.83	1.04	0.67	0.79	
8,216.00	91.18	184.12	7,149.23	-961.01	-38.83	961.79	1.19	0.78	0.89	
8,312.00	89.90	182.39	7,148.32	-1,056.85	-44.28	1,057.77	2.24	-1.33	-1.80	
8,407.00	91.04	181.94	7,147.54	-1,151.77	-47.87	1,152.77	1.29	1.20	-0.47	
8,502.00	90.17	182.33	7,146.54	-1,246.70	-51.41	1,247.76	1.00	-0.92	0.41	
8,597.00	91.95	181.86	7,144.78	-1,341.62	-54.88	1,342.74	1.94	1.87	-0.49	
8,691.00	90.30	181.62	7,142.94	-1,435.55	-57.73	1,436.71	1.77	-1.76	-0.26	
8,786.00	90.40	181.51	7,142.36	-1,530.52	-60.33	1,531.70	0.16	0.11	-0.12	
8,881.00	88.99	182.07	7,142.86	-1,625.46	-63.30	1,626.70	1.60	-1.48	0.59	
8,976.00	89.53	183.21	7,144.09	-1,720.35	-67.67	1,721.68	1.33	0.57	1.20	
9,071.00	91.14	183.73	7,143.53	-1,815.17	-73.42	1,816.66	1.78	1.69	0.55	
9,167.00	90.07	184.21	7,142.52	-1,910.94	-80.07	1,912.61	1.22	-1.11	0.50	
9,262.00	89.36	184.53	7,142.99	-2,005.66	-87.30	2,007.55	0.82	-0.75	0.34	
9,356.00	89.40	184.41	7,144.01	-2,099.37	-94.63	2,101.47	0.13	0.04	-0.13	
9,451.00	90.37	184.79	7,144.20	-2,194.06	-102.25	2,196.39	1.10	1.02	0.40	
9,546.00	88.42	182.54	7,145.20	-2,288.85	-108.32	2,291.35	3.13	-2.05	-2.37	
9,640.00	89.13	182.57	7,147.21	-2,382.73	-112.51	2,385.33	0.76	0.76	0.03	
9,735.00	89.93	182.71	7,147.99	-2,477.63	-116.89	2,480.32	0.85	0.84	0.15	
9,830.00	91.24	182.51	7,147.02	-2,572.52	-121.21	2,575.31	1.39	1.38	-0.21	
9,925.00	89.50	181.77	7,146.41	-2,667.45	-124.76	2,670.31	1.99	-1.83	-0.78	
10,020.00	89.87	182.00	7,146.93	-2,762.40	-127.88	2,765.30	0.46	0.39	0.24	
10,115.00	89.66	182.23	7,147.32	-2,857.33	-131.39	2,860.30	0.33	-0.22	0.24	
10,209.00	89.40	182.61	7,148.09	-2,951.25	-135.36	2,954.30	0.49	-0.28	0.40	
10,304.00	89.66	181.67	7,148.87	-3,046.18	-138.91	3,049.29	1.03	0.27	-0.99	
10,399.00	89.97	181.96	7,149.18	-3,141.13	-141.91	3,144.29	0.45	0.33	0.31	
10,494.00	91.11	182.42	7,148.28	-3,236.05	-145.54	3,239.28	1.29	1.20	0.48	
10,587.00	90.34	182.32	7,147.10	-3,328.96	-149.39	3,332.27	0.83	-0.83	-0.11	
10,681.00	89.26	182.05	7,147.43	-3,422.89	-152.97	3,426.27	1.18	-1.15	-0.29	
10,776.00	89.26	182.05	7,148.66	-3,517.82	-156.37	3,521.26	0.00	0.00	0.00	
10,871.00	90.23	182.64	7,149.08	-3,612.74	-160.26	3,616.26	1.20	1.02	0.62	
10,966.00	91.04	182.53	7,148.03	-3,707.64	-164.54	3,711.25	0.86	0.85	-0.12	
11,061.00	89.93	181.77	7,147.23	-3,802.57	-168.11	3,806.25	1.42	-1.17	-0.80	
11,153.00	89.36	181.40	7,147.80	-3,894.53	-170.65	3,898.24	0.74	-0.62	-0.40	
11,247.00	90.10	181.78	7,148.24	-3,988.49	-173.26	3,992.23	0.88	0.79	0.40	
11,338.00	91.07	181.94	7,147.31	-4,079.44	-176.21	4,083.22	1.08	1.07	0.18	
11,433.00	89.56	181.00	7,146.79	-4,174.40	-178.65	4,178.21	1.87	-1.59	-0.99	
11,527.00	89.06	179.87	7,147.92	-4,268.39	-179.36	4,272.15	1.31	-0.53	-1.20	
11,622.00	89.97	179.16	7,148.72	-4,363.38	-178.56	4,367.03	1.21	0.96	-0.75	
11,717.00	91.14	178.54	7,147.80	-4,458.36	-176.65	4,461.85	1.39	1.23	-0.65	

<b>Company:</b>	US ROCKIES WATTENBERG PLANNING	<b>Local Co-ordinate Reference:</b>	Well SUNFLOWER 24N-17HZ
<b>Project:</b>	WELD-NAD83-UTMFT13N	<b>TVD Reference:</b>	GL 4901' & KB 20' @ 4921.00usft (PRECISION 461)
<b>Site:</b>	2N-65W-08 Sunflower 24-8HZ Pad	<b>MD Reference:</b>	GL 4901' & KB 20' @ 4921.00usft (PRECISION 461)
<b>Well:</b>	SUNFLOWER 24N-17HZ	<b>North Reference:</b>	True
<b>Wellbore:</b>	Plan A	<b>Survey Calculation Method:</b>	Minimum Curvature
<b>Design:</b>	Plan A	<b>Database:</b>	Denver Sales

Survey										
Measured Depth (usft)	Inclination (°)	Azimuth (°)	Vertical Depth (usft)	+N/-S (usft)	+E/-W (usft)	Vertical Section (usft)	Dogleg Rate (°/100usft)	Build Rate (°/100usft)	Turn Rate (°/100usft)	
11,812.00	90.40	179.98	7,146.53	-4,553.34	-175.43	4,556.71	1.70	-0.78	1.52	
11,907.00	89.66	180.74	7,146.48	-4,648.33	-176.02	4,651.65	1.12	-0.78	0.80	
12,003.00	90.50	181.14	7,146.34	-4,744.32	-177.60	4,747.63	0.97	0.88	0.42	
12,098.00	90.37	181.04	7,145.62	-4,839.30	-179.41	4,842.60	0.17	-0.14	-0.11	
12,193.00	88.39	181.22	7,146.65	-4,934.27	-181.28	4,937.57	2.09	-2.08	0.19	
12,288.00	89.23	181.65	7,148.62	-5,029.22	-183.66	5,032.54	0.99	0.88	0.45	
12,383.00	89.87	181.93	7,149.37	-5,124.17	-186.62	5,127.53	0.74	0.67	0.29	
12,478.00	90.84	181.83	7,148.78	-5,219.11	-189.74	5,222.53	1.03	1.02	-0.11	
12,574.00	91.61	181.87	7,146.73	-5,315.04	-192.84	5,318.50	0.80	0.80	0.04	
LAST SDI MWD PRODUCTION SURVEY										
12,650.00	91.61	181.87	7,144.59	-5,390.97	-195.32	5,394.47	0.00	0.00	0.00	
SDI PROJECTION TO TD(2573 FNL 1489 FEL)										

Casing Points					
Measured Depth (usft)	Vertical Depth (usft)	Name	Casing Diameter (in)	Hole Diameter (in)	
1,839.00	1,821.50	9 5/8"	9.625	13.500	

Design Annotations					
Measured Depth (usft)	Vertical Depth (usft)	Local Coordinates		Comment	
		+N/-S (usft)	+E/-W (usft)		
156.00	155.99	0.75	-0.83	FIRST SDI MWD SURFACE SURVEY	
1,798.00	1,781.25	210.38	10.34	LAST SDI MWD SURFACE SURVEY	
1,953.00	1,933.44	239.76	11.08	FIRST SDI MWD PRODUCTION SURVEY	
7,191.00	7,040.76	45.24	9.43	TOP OF PRODUCTION (2445 FNL 1311 FEL)	
7,552.00	7,139.47	-298.33	-1.10	LANDING POINT (2522 FSL 1319 FEL)	
12,574.00	7,146.73	-5,315.04	-192.84	LAST SDI MWD PRODUCTION SURVEY	
12,650.00	7,144.59	-5,390.97	-195.32	SDI PROJECTION TO TD(2573 FNL 1489 FEL)	

Checked By: \_\_\_\_\_ Approved By: \_\_\_\_\_ Date: \_\_\_\_\_



# **US ROCKIES WATTENBERG PLANNING**

**WELD-NAD83-UTMFT13N**

**2N-65W-08 Sunflower 24-8HZ Pad**

**SUNFLOWER 24N-17HZ**

**Plan A**

**Design: Plan A**

## **Survey Report - Geographic**

**11 November, 2015**

