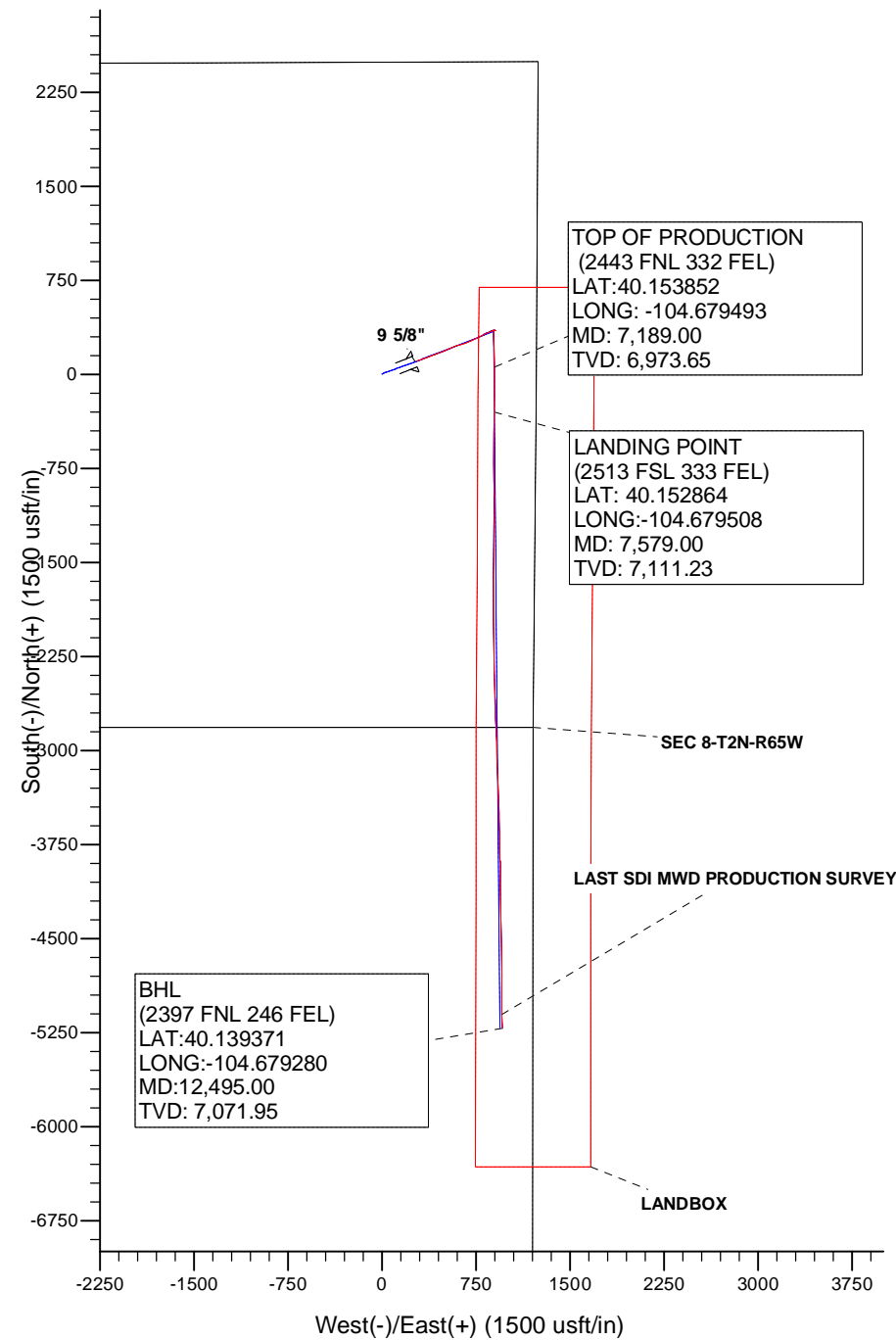
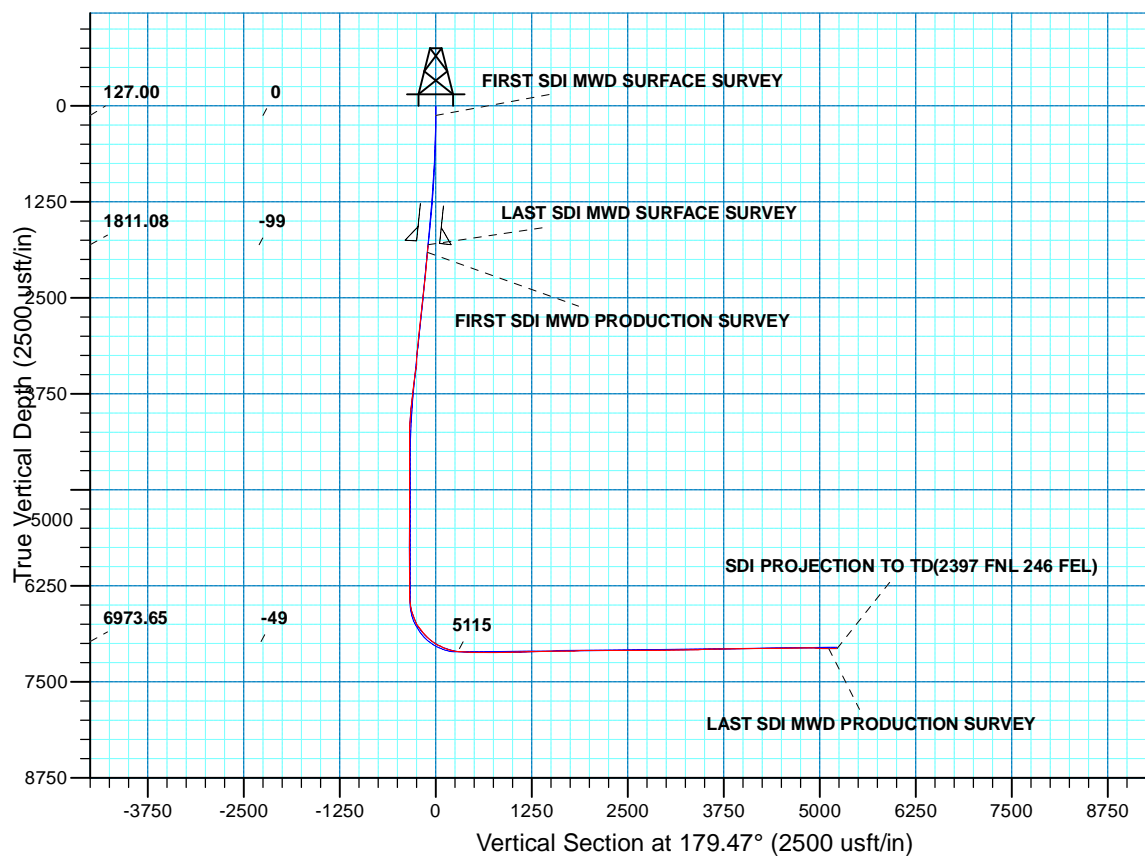




Project: WELD-NAD83-UTMFT13N  
Site: 2N-65W-08 Sunflower 24-8HZ Pad  
Well: SUNFLOWER 40N-17HZ  
Wellbore: Plan A  
Design: Plan A



WELL DETAILS: SUNFLOWER 40N-17HZ					
GL 4901' & KB 20' @ 4921.00usft (PRECISION 461)					
+N/-S	+E/-W	Northing	Easting	Latitude	Longitude
0.00	0.00	14582858.71	1729074.01	40.153694	-104.682712



<b>Company:</b>	US ROCKIES WATTENBERG PLANNING	<b>Local Co-ordinate Reference:</b>	Well SUNFLOWER 40N-17HZ
<b>Project:</b>	WELD-NAD83-UTMFT13N	<b>TVD Reference:</b>	GL 4901' & KB 20' @ 4921.00usft (PRECISION 461)
<b>Site:</b>	2N-65W-08 Sunflower 24-8HZ Pad	<b>MD Reference:</b>	GL 4901' & KB 20' @ 4921.00usft (PRECISION 461)
<b>Well:</b>	SUNFLOWER 40N-17HZ	<b>North Reference:</b>	True
<b>Wellbore:</b>	Plan A	<b>Survey Calculation Method:</b>	Minimum Curvature
<b>Design:</b>	Plan A	<b>Database:</b>	Denver Sales

<b>Project</b>	WELD-NAD83-UTMFT13N		
<b>Map System:</b>	Universal Transverse Mercator (US Survey Feet)	<b>System Datum:</b>	Mean Sea Level
<b>Geo Datum:</b>	North American Datum 1983		
<b>Map Zone:</b>	Zone 13N (108 W to 102 W)		

Site	2N-65W-08 Sunflower 24-8HZ Pad				
Site Position:		Northing:	14,582,858.79 usft	Latitude:	40.153696
From:	Lat/Long	Easting:	1,728,894.06 usft	Longitude:	-104.683356
Position Uncertainty:	0.00 usft	Slot Radius:	13.200 in	Grid Convergence:	0.20 °

Well	SUNFLOWER 40N-17HZ					
Well Position	+N/-S	0.00 usft	Northing:	14,582,858.71 usft	Latitude:	40.153694
	+E/-W	0.00 usft	Easting:	1,729,074.01 usft	Longitude:	-104.682712
Position Uncertainty		3.28 usft	Wellhead Elevation:	0.00 usft	Ground Level:	4,901.00 usft

<b>Wellbore</b>	Plan A				
<b>Magnetics</b>	<b>Model Name</b>	<b>Sample Date</b>	<b>Declination (°)</b>	<b>Dip Angle (°)</b>	<b>Field Strength (nT)</b>
	HDGM	9/19/2015	8.40	66.68	52,520

<b>Design</b>	Plan A				
<b>Audit Notes:</b>					
<b>Version:</b>	1.0	<b>Phase:</b>	ACTUAL	<b>Tie On Depth:</b>	0.00
<b>Vertical Section:</b>	<b>Depth From (TVD) (usft)</b>	<b>+N/-S (usft)</b>	<b>+E/-W (usft)</b>	<b>Direction (°)</b>	
	0.00	0.00	0.00	179.47	

<b>Survey Program</b>	<b>Date</b>	11/4/2015			
<b>From (usft)</b>	<b>To (usft)</b>	<b>Survey (Wellbore)</b>	<b>Tool Name</b>	<b>Description</b>	
13.00	1,844.00	SDI MWD SURFACE (Plan A)	APC_ISCWSA REV 2 MWD	Fixed:v2:standard declination	
1,952.00	12,495.00	Survey #2 SDI MWD PRODUCTION (Plan	APC_ISCWSA REV 2 MWD+	Fixed:v2:crustal field declination	

<b>Survey</b>										
<b>Measured Depth (usft)</b>	<b>Inclination (°)</b>	<b>Azimuth (°)</b>	<b>Vertical Depth (usft)</b>	<b>+N/-S (usft)</b>	<b>+E/-W (usft)</b>	<b>Vertical Section (usft)</b>	<b>Dogleg Rate (°/100usft)</b>	<b>Build Rate (°/100usft)</b>	<b>Turn Rate (°/100usft)</b>	
0.00	0.00	0.00	0.00	0.00	0.00	0.00	0.00	0.00	0.00	
13.00	0.00	0.00	13.00	0.00	0.00	0.00	0.00	0.00	0.00	
127.00	0.47	341.57	127.00	0.44	-0.15	-0.44	0.41	0.41	0.00	
<b>FIRST SDI MWD SURFACE SURVEY</b>										
217.00	1.34	42.38	216.99	1.57	0.44	-1.57	1.32	0.97	67.57	
307.00	1.58	66.22	306.96	2.85	2.29	-2.83	0.72	0.27	26.49	
385.00	2.18	67.41	384.92	3.85	4.64	-3.81	0.77	0.77	1.53	
475.00	3.59	73.31	474.80	5.32	8.92	-5.24	1.60	1.57	6.56	

<b>Company:</b>	US ROCKIES WATTENBERG PLANNING	<b>Local Co-ordinate Reference:</b>	Well SUNFLOWER 40N-17HZ
<b>Project:</b>	WELD-NAD83-UTMFT13N	<b>TVD Reference:</b>	GL 4901' & KB 20' @ 4921.00usft (PRECISION 461)
<b>Site:</b>	2N-65W-08 Sunflower 24-8HZ Pad	<b>MD Reference:</b>	GL 4901' & KB 20' @ 4921.00usft (PRECISION 461)
<b>Well:</b>	SUNFLOWER 40N-17HZ	<b>North Reference:</b>	True
<b>Wellbore:</b>	Plan A	<b>Survey Calculation Method:</b>	Minimum Curvature
<b>Design:</b>	Plan A	<b>Database:</b>	Denver Sales

Survey									
Measured Depth (usft)	Inclination (°)	Azimuth (°)	Vertical Depth (usft)	+N/-S (usft)	+E/-W (usft)	Vertical Section (usft)	Dogleg Rate (°/100usft)	Build Rate (°/100usft)	Turn Rate (°/100usft)
565.00	4.96	65.65	564.55	7.73	15.17	-7.59	1.65	1.52	-8.51
655.00	5.90	67.82	654.14	11.08	23.00	-10.87	1.07	1.04	2.41
745.00	7.08	72.22	743.57	14.52	32.56	-14.22	1.42	1.31	4.89
835.00	8.75	69.54	832.70	18.61	44.26	-18.20	1.90	1.86	-2.98
930.00	10.61	67.89	926.35	24.43	59.13	-23.88	1.98	1.96	-1.74
1,060.00	12.47	70.67	1,053.72	33.58	83.46	-32.81	1.49	1.43	2.14
1,149.00	12.92	73.39	1,140.54	39.60	102.07	-38.66	0.84	0.51	3.06
1,239.00	13.25	68.84	1,228.21	46.20	121.33	-45.08	1.20	0.37	-5.06
1,329.00	14.42	68.39	1,315.59	54.05	141.37	-52.74	1.31	1.30	-0.50
1,419.00	15.28	69.41	1,402.59	62.35	162.89	-60.84	1.00	0.96	1.13
1,509.00	15.66	70.90	1,489.33	70.50	185.47	-68.78	0.61	0.42	1.66
1,600.00	16.37	71.24	1,576.79	78.64	209.21	-76.70	0.79	0.78	0.37
1,690.00	16.37	70.93	1,663.14	86.86	233.21	-84.70	0.10	0.00	-0.34
1,780.00	16.10	69.03	1,749.56	95.47	256.85	-93.09	0.66	-0.30	-2.11
1,813.00	15.99	68.84	1,781.27	98.75	265.36	-96.29	0.38	-0.34	-0.57
9 5/8"									
1,844.00	15.88	68.66	1,811.08	101.84	273.29	-99.30	0.38	-0.34	-0.58
LAST SDI MWD SURFACE SURVEY									
1,952.00	16.07	72.86	1,914.92	111.62	301.34	-108.83	1.08	0.18	3.89
FIRST SDI MWD PRODUCTION SURVEY									
2,047.00	15.99	71.81	2,006.22	119.58	326.34	-116.55	0.32	-0.08	-1.11
2,143.00	15.71	70.50	2,098.57	128.04	351.15	-124.79	0.47	-0.29	-1.36
2,238.00	15.44	68.78	2,190.08	136.91	375.06	-133.44	0.56	-0.28	-1.81
2,333.00	15.77	64.80	2,281.58	146.99	398.53	-143.30	1.18	0.35	-4.19
2,428.00	16.97	70.69	2,372.74	157.07	423.30	-153.15	2.15	1.26	6.20
2,523.00	16.46	72.35	2,463.72	165.74	449.21	-161.57	0.74	-0.54	1.75
2,618.00	15.64	68.89	2,555.02	174.43	473.98	-170.04	1.33	-0.86	-3.64
2,713.00	16.12	65.60	2,646.40	184.49	497.94	-179.88	1.07	0.51	-3.46
2,808.00	16.47	65.49	2,737.58	195.52	522.20	-190.69	0.37	0.37	-0.12
2,903.00	16.10	64.46	2,828.77	206.79	546.34	-201.73	0.49	-0.39	-1.08
2,999.00	16.73	70.13	2,920.86	217.23	571.35	-211.93	1.79	0.66	5.91
3,094.00	16.03	70.83	3,012.01	226.18	596.60	-220.65	0.77	-0.74	0.74
3,189.00	17.04	70.89	3,103.08	235.05	622.14	-229.28	1.06	1.06	0.06
3,284.00	16.65	72.25	3,194.00	243.75	648.25	-237.74	0.58	-0.41	1.43
3,379.00	16.22	71.06	3,285.12	252.21	673.77	-245.96	0.57	-0.45	-1.25
3,474.00	15.81	68.28	3,376.43	261.30	698.34	-254.83	0.92	-0.43	-2.93
3,569.00	15.91	67.31	3,467.82	271.12	722.37	-264.42	0.30	0.11	-1.02
3,664.00	15.79	65.24	3,559.21	281.55	746.12	-274.64	0.61	-0.13	-2.18
3,760.00	15.37	62.32	3,651.68	292.93	769.25	-285.80	0.93	-0.44	-3.04
3,855.00	14.81	59.32	3,743.41	304.98	790.84	-297.65	1.01	-0.59	-3.16
3,950.00	13.58	62.35	3,835.50	316.35	811.17	-308.83	1.51	-1.29	3.19
4,045.00	13.01	62.89	3,927.96	326.40	830.56	-318.70	0.61	-0.60	0.57

<b>Company:</b>	US ROCKIES WATTENBERG PLANNING	<b>Local Co-ordinate Reference:</b>	Well SUNFLOWER 40N-17HZ
<b>Project:</b>	WELD-NAD83-UTMFT13N	<b>TVD Reference:</b>	GL 4901' & KB 20' @ 4921.00usft (PRECISION 461)
<b>Site:</b>	2N-65W-08 Sunflower 24-8HZ Pad	<b>MD Reference:</b>	GL 4901' & KB 20' @ 4921.00usft (PRECISION 461)
<b>Well:</b>	SUNFLOWER 40N-17HZ	<b>North Reference:</b>	True
<b>Wellbore:</b>	Plan A	<b>Survey Calculation Method:</b>	Minimum Curvature
<b>Design:</b>	Plan A	<b>Database:</b>	Denver Sales

Survey										
Measured Depth (usft)	Inclination (°)	Azimuth (°)	Vertical Depth (usft)	+N/-S (usft)	+E/-W (usft)	Vertical Section (usft)	Dogleg Rate (°/100usft)	Build Rate (°/100usft)	Turn Rate (°/100usft)	
4,140.00	11.40	67.41	4,020.81	334.88	848.75	-327.01	1.97	-1.69	4.76	
4,235.00	9.38	67.11	4,114.25	341.50	864.56	-333.48	2.13	-2.13	-0.32	
4,329.00	5.83	66.65	4,207.41	346.37	876.00	-338.25	3.78	-3.78	-0.49	
4,425.00	3.82	73.24	4,303.06	349.22	883.54	-341.04	2.17	-2.09	6.86	
4,520.00	2.22	91.96	4,397.93	350.07	888.41	-341.84	1.96	-1.68	19.71	
4,614.00	1.84	109.17	4,491.87	349.52	891.65	-341.25	0.76	-0.40	18.31	
4,709.00	1.71	97.51	4,586.83	348.83	894.50	-340.54	0.40	-0.14	-12.27	
4,804.00	1.50	92.07	4,681.79	348.60	897.15	-340.29	0.27	-0.22	-5.73	
4,899.00	1.39	94.03	4,776.76	348.47	899.54	-340.14	0.13	-0.12	2.06	
4,993.00	1.84	69.95	4,870.72	348.91	902.09	-340.55	0.86	0.48	-25.62	
5,088.00	1.07	82.07	4,965.69	349.56	904.40	-341.17	0.87	-0.81	12.76	
5,183.00	0.38	285.49	5,060.69	349.76	904.98	-341.38	1.50	-0.73	-164.82	
5,278.00	0.84	265.41	5,155.68	349.79	903.98	-341.41	0.53	0.48	-21.14	
5,373.00	0.53	280.64	5,250.67	349.82	902.86	-341.45	0.38	-0.33	16.03	
5,468.00	0.30	312.62	5,345.67	350.07	902.24	-341.70	0.33	-0.24	33.66	
5,563.00	0.26	330.41	5,440.67	350.42	901.95	-342.06	0.10	-0.04	18.73	
5,657.00	0.23	39.42	5,534.67	350.75	901.97	-342.39	0.30	-0.03	73.41	
5,752.00	0.38	28.16	5,629.67	351.18	902.24	-342.82	0.17	0.16	-11.85	
5,847.00	1.08	282.58	5,724.66	351.65	901.51	-343.30	1.30	0.74	-111.14	
5,941.00	1.17	268.36	5,818.64	351.82	899.69	-343.48	0.31	0.10	-15.13	
6,036.00	1.15	236.49	5,913.63	351.26	897.92	-342.94	0.67	-0.02	-33.55	
6,131.00	1.26	221.47	6,008.60	349.95	896.44	-341.65	0.35	0.12	-15.81	
6,226.00	1.28	236.45	6,103.58	348.58	894.86	-340.29	0.35	0.02	15.77	
6,321.00	0.99	252.52	6,198.56	347.75	893.19	-339.47	0.45	-0.31	16.92	
6,416.00	1.01	275.97	6,293.55	347.59	891.58	-339.33	0.43	0.02	24.68	
6,511.00	1.02	281.29	6,388.53	347.84	889.92	-339.60	0.10	0.01	5.60	
6,606.00	6.07	175.83	6,483.36	343.00	889.45	-334.75	6.76	5.32	-111.01	
6,701.00	15.24	172.92	6,576.62	325.56	891.36	-317.30	9.67	9.65	-3.06	
6,796.00	21.96	177.22	6,666.61	295.39	893.76	-287.11	7.21	7.07	4.53	
6,890.00	29.98	177.35	6,751.05	254.31	895.70	-246.01	8.53	8.53	0.14	
6,984.00	37.87	177.11	6,828.99	201.95	898.25	-193.63	8.39	8.39	-0.26	
7,079.00	43.99	179.53	6,900.73	139.77	899.99	-131.44	6.65	6.44	2.55	
7,174.00	51.64	180.91	6,964.48	69.44	899.67	-61.11	8.12	8.05	1.45	
7,189.00	52.98	180.73	6,973.65	57.57	899.50	-49.24	9.01	8.95	-1.23	
TOP OF PRODUCTION (2443 FNL 332 FEL)										
7,269.00	60.15	179.84	7,017.70	-9.15	899.19	17.47	9.01	8.96	-1.11	
7,364.00	67.72	180.59	7,059.41	-94.42	898.85	102.73	8.00	7.97	0.79	
7,458.00	74.48	180.75	7,089.84	-183.30	897.81	191.60	7.19	7.19	0.17	
7,553.00	83.00	181.57	7,108.38	-276.36	895.92	284.64	9.01	8.97	0.86	
7,579.00	84.41	181.39	7,111.23	-302.20	895.25	310.47	5.46	5.42	-0.69	
LANDING POINT (2513 FSL 333 FEL)										
7,648.00	88.15	180.92	7,115.71	-371.03	893.86	379.28	5.46	5.42	-0.68	

<b>Company:</b>	US ROCKIES WATTENBERG PLANNING	<b>Local Co-ordinate Reference:</b>	Well SUNFLOWER 40N-17HZ
<b>Project:</b>	WELD-NAD83-UTMFT13N	<b>TVD Reference:</b>	GL 4901' & KB 20' @ 4921.00usft (PRECISION 461)
<b>Site:</b>	2N-65W-08 Sunflower 24-8HZ Pad	<b>MD Reference:</b>	GL 4901' & KB 20' @ 4921.00usft (PRECISION 461)
<b>Well:</b>	SUNFLOWER 40N-17HZ	<b>North Reference:</b>	True
<b>Wellbore:</b>	Plan A	<b>Survey Calculation Method:</b>	Minimum Curvature
<b>Design:</b>	Plan A	<b>Database:</b>	Denver Sales

Survey										
Measured Depth (usft)	Inclination (°)	Azimuth (°)	Vertical Depth (usft)	+N/-S (usft)	+E/-W (usft)	Vertical Section (usft)	Dogleg Rate (°/100usft)	Build Rate (°/100usft)	Turn Rate (°/100usft)	
7,743.00	88.62	180.18	7,118.38	-465.98	892.95	474.22	0.92	0.49	-0.78	
7,838.00	88.99	179.80	7,120.36	-560.96	892.97	569.20	0.56	0.39	-0.40	
7,933.00	90.10	179.60	7,121.12	-655.96	893.47	664.19	1.19	1.17	-0.21	
8,029.00	89.46	179.59	7,121.49	-751.95	894.14	760.19	0.67	-0.67	-0.01	
8,123.00	90.81	179.17	7,121.27	-845.94	895.16	854.19	1.50	1.44	-0.45	
8,218.00	91.71	178.84	7,119.18	-940.91	896.81	949.16	1.01	0.95	-0.35	
8,313.00	91.58	180.32	7,116.45	-1,035.86	897.51	1,044.12	1.56	-0.14	1.56	
8,408.00	91.88	181.90	7,113.58	-1,130.80	895.67	1,139.03	1.69	0.32	1.66	
8,503.00	91.01	180.89	7,111.19	-1,225.74	893.35	1,233.95	1.40	-0.92	-1.06	
8,598.00	91.38	180.62	7,109.20	-1,320.71	892.10	1,328.90	0.48	0.39	-0.28	
8,692.00	91.95	179.81	7,106.47	-1,414.67	891.75	1,422.85	1.05	0.61	-0.86	
8,788.00	90.47	180.85	7,104.45	-1,510.64	891.20	1,518.82	1.88	-1.54	1.08	
8,883.00	90.81	180.45	7,103.38	-1,605.63	890.12	1,613.79	0.55	0.36	-0.42	
8,978.00	91.38	180.24	7,101.57	-1,700.61	889.55	1,708.76	0.64	0.60	-0.22	
9,073.00	91.91	180.03	7,098.84	-1,795.57	889.32	1,803.72	0.60	0.56	-0.22	
9,167.00	90.71	180.08	7,096.69	-1,889.54	889.23	1,897.69	1.28	-1.28	0.05	
9,262.00	91.48	179.37	7,094.88	-1,984.52	889.69	1,992.67	1.10	0.81	-0.75	
9,357.00	90.91	179.34	7,092.90	-2,079.49	890.76	2,087.65	0.60	-0.60	-0.03	
9,452.00	89.46	178.77	7,092.59	-2,174.48	892.33	2,182.64	1.64	-1.53	-0.60	
9,547.00	89.56	178.66	7,093.40	-2,269.45	894.46	2,277.63	0.16	0.11	-0.12	
9,641.00	90.34	178.05	7,093.48	-2,363.41	897.15	2,371.61	1.05	0.83	-0.65	
9,736.00	90.40	178.32	7,092.87	-2,458.36	900.16	2,466.58	0.29	0.06	0.28	
9,831.00	90.50	179.11	7,092.12	-2,553.33	902.29	2,561.57	0.84	0.11	0.83	
9,926.00	90.47	178.05	7,091.32	-2,648.30	904.65	2,656.55	1.12	-0.03	-1.12	
10,020.00	89.76	178.71	7,091.13	-2,742.26	907.31	2,750.54	1.03	-0.76	0.70	
10,115.00	91.28	178.04	7,090.27	-2,837.22	910.00	2,845.51	1.75	1.60	-0.71	
10,209.00	91.31	178.07	7,088.14	-2,931.14	913.19	2,939.46	0.05	0.03	0.03	
10,303.00	91.07	177.92	7,086.19	-3,025.06	916.48	3,033.41	0.30	-0.26	-0.16	
10,398.00	90.30	178.31	7,085.06	-3,120.00	919.60	3,128.37	0.91	-0.81	0.41	
10,492.00	89.43	177.79	7,085.28	-3,213.94	922.80	3,222.34	1.08	-0.93	-0.55	
10,587.00	90.50	176.84	7,085.34	-3,308.84	927.25	3,317.27	1.51	1.13	-1.00	
10,683.00	91.24	178.11	7,083.88	-3,404.73	931.48	3,413.20	1.53	0.77	1.32	
10,775.00	91.91	178.41	7,081.35	-3,496.65	934.27	3,505.15	0.80	0.73	0.33	
10,869.00	91.44	177.92	7,078.60	-3,590.56	937.28	3,599.08	0.72	-0.50	-0.52	
10,959.00	92.22	180.10	7,075.73	-3,680.50	938.83	3,689.03	2.57	0.87	2.42	
11,054.00	92.05	179.12	7,072.19	-3,775.43	939.48	3,783.96	1.05	-0.18	-1.03	
11,149.00	92.18	178.12	7,068.68	-3,870.34	941.77	3,878.88	1.06	0.14	-1.05	
11,244.00	89.46	180.08	7,067.32	-3,965.30	943.26	3,973.86	3.53	-2.86	2.06	
11,339.00	89.09	179.20	7,068.53	-4,060.29	943.86	4,068.85	1.00	-0.39	-0.93	
11,434.00	90.67	180.34	7,068.72	-4,155.28	944.24	4,163.84	2.05	1.66	1.20	
11,529.00	90.71	179.53	7,067.58	-4,250.28	944.34	4,258.83	0.85	0.04	-0.85	
11,624.00	91.14	178.28	7,066.05	-4,345.25	946.16	4,353.81	1.39	0.45	-1.32	

<b>Company:</b>	US ROCKIES WATTENBERG PLANNING	<b>Local Co-ordinate Reference:</b>	Well SUNFLOWER 40N-17HZ
<b>Project:</b>	WELD-NAD83-UTMFT13N	<b>TVD Reference:</b>	GL 4901' & KB 20' @ 4921.00usft (PRECISION 461)
<b>Site:</b>	2N-65W-08 Sunflower 24-8HZ Pad	<b>MD Reference:</b>	GL 4901' & KB 20' @ 4921.00usft (PRECISION 461)
<b>Well:</b>	SUNFLOWER 40N-17HZ	<b>North Reference:</b>	True
<b>Wellbore:</b>	Plan A	<b>Survey Calculation Method:</b>	Minimum Curvature
<b>Design:</b>	Plan A	<b>Database:</b>	Denver Sales

Survey										
Measured Depth (usft)	Inclination (°)	Azimuth (°)	Vertical Depth (usft)	+N/-S (usft)	+E/-W (usft)	Vertical Section (usft)	Dogleg Rate (°/100usft)	Build Rate (°/100usft)	Turn Rate (°/100usft)	
11,719.00	91.61	177.08	7,063.77	-4,440.14	950.00	4,448.74	1.36	0.49	-1.26	
11,814.00	90.97	179.30	7,061.63	-4,535.06	953.00	4,543.68	2.43	-0.67	2.34	
11,910.00	90.67	179.00	7,060.25	-4,631.04	954.43	4,639.67	0.44	-0.31	-0.31	
12,005.00	88.93	180.33	7,060.59	-4,726.03	954.98	4,734.66	2.31	-1.83	1.40	
12,100.00	89.09	180.35	7,062.23	-4,821.02	954.42	4,829.64	0.17	0.17	0.02	
12,196.00	88.83	179.78	7,063.97	-4,917.00	954.31	4,925.62	0.65	-0.27	-0.59	
12,291.00	88.49	179.34	7,066.19	-5,011.97	955.04	5,020.59	0.59	-0.36	-0.46	
12,385.00	88.35	178.70	7,068.78	-5,105.92	956.65	5,114.55	0.70	-0.15	-0.68	
LAST SDI MWD PRODUCTION SURVEY										
12,495.00	88.35	178.70	7,071.95	-5,215.85	959.14	5,224.50	0.00	0.00	0.00	
SDI PROJECTION TO TD(2397 FNL 246 FEL)										

Casing Points					
Measured Depth (usft)	Vertical Depth (usft)	Name	Casing Diameter (in)	Hole Diameter (in)	
1,813.00	1,781.27	9 5/8"	9.625	13.500	

Design Annotations					
Measured Depth (usft)	Vertical Depth (usft)	Local Coordinates		Comment	
		+N/-S (usft)	+E/-W (usft)		
127.00	127.00	0.44	-0.15	FIRST SDI MWD SURFACE SURVEY	
1,844.00	1,811.08	101.84	273.29	LAST SDI MWD SURFACE SURVEY	
1,952.00	1,914.92	111.62	301.34	FIRST SDI MWD PRODUCTION SURVEY	
7,189.00	6,973.65	57.57	899.50	TOP OF PRODUCTION (2443 FNL 332 FEL)	
7,579.00	7,111.23	-302.20	895.25	LANDING POINT (2513 FSL 333 FEL)	
12,385.00	7,068.78	-5,105.92	956.65	LAST SDI MWD PRODUCTION SURVEY	
12,495.00	7,071.95	-5,215.85	959.14	SDI PROJECTION TO TD(2397 FNL 246 FEL)	

Checked By: \_\_\_\_\_ Approved By: \_\_\_\_\_ Date: \_\_\_\_\_