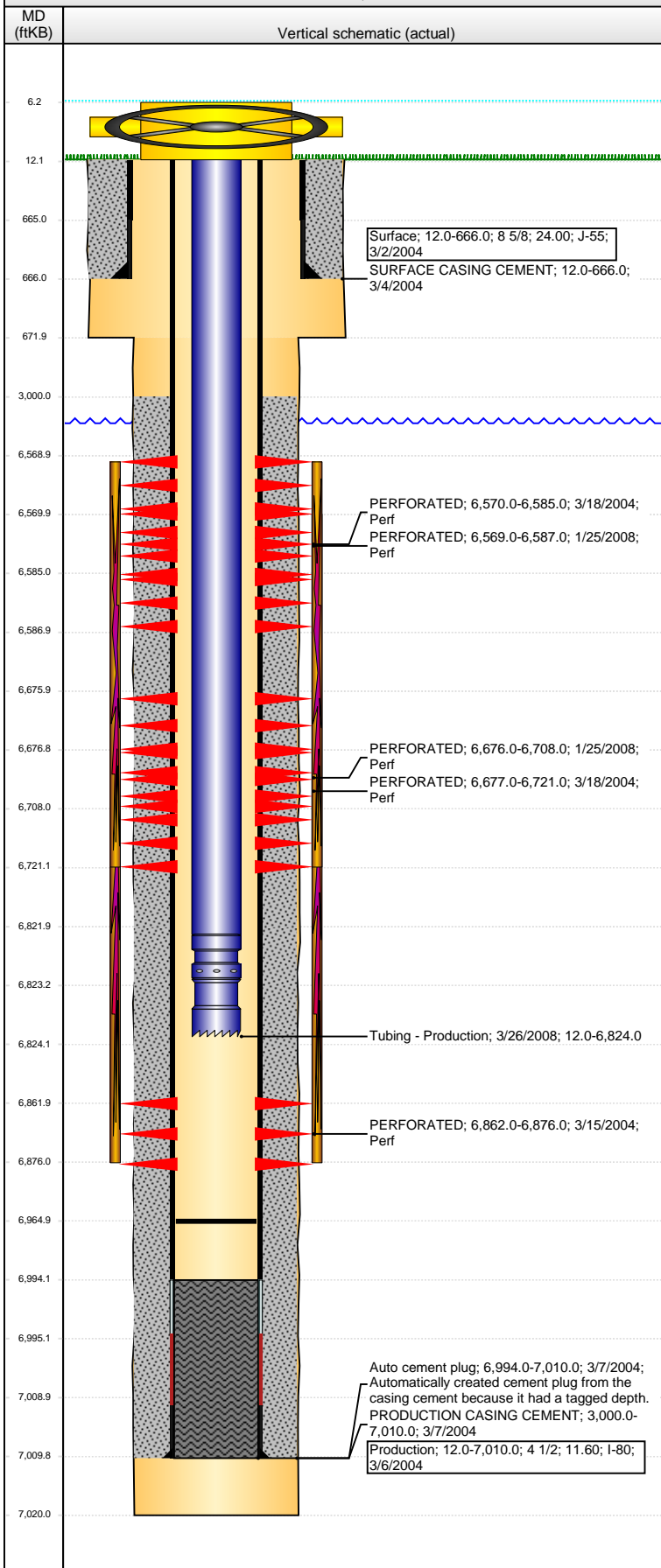


Well Name: EHRlich 19-33

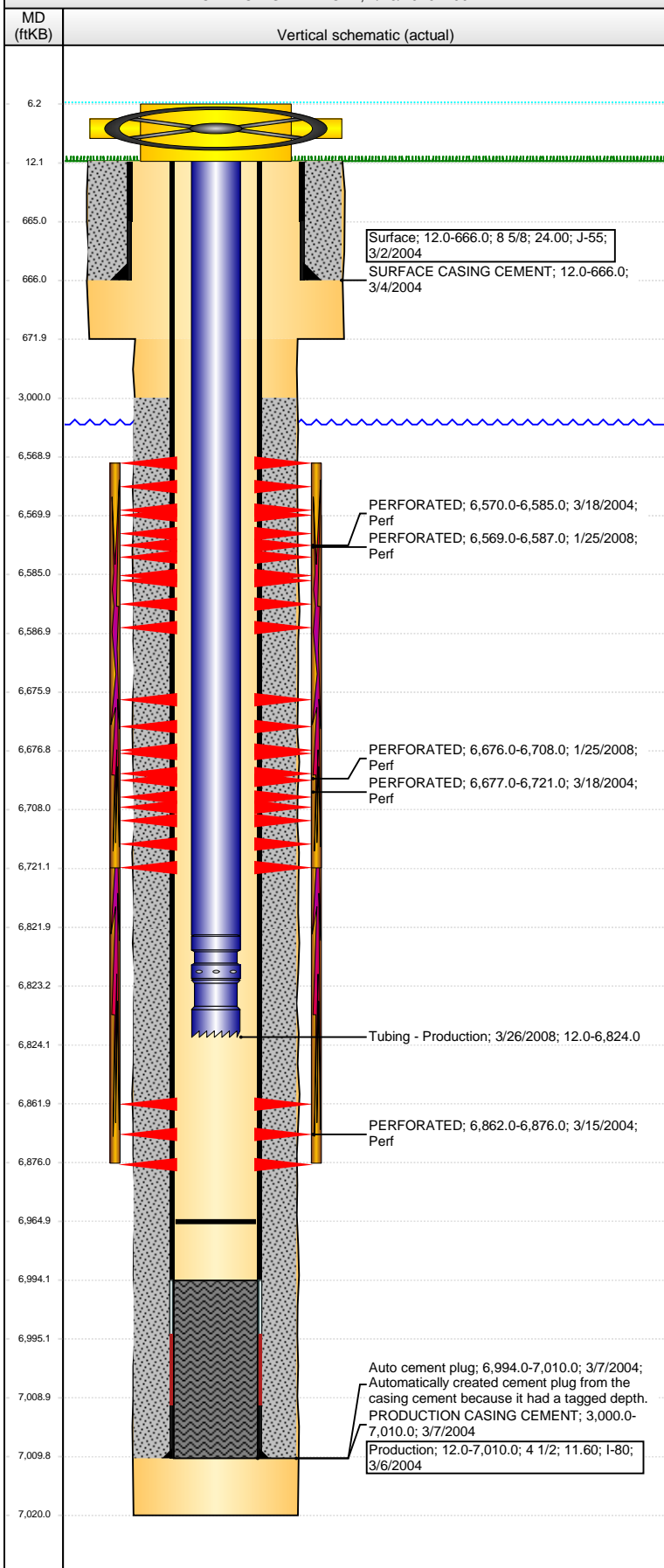
VERTICAL - ORIGINAL HOLE, 1/13/2016 1:00:18 PM



Well Header									
API 05-123-21983		Business Unit DJ BASIN		District 15		Well Config VERTICAL			
Original KB Elevation (ft) 4,642.00		KB - GL / MSL (ftKB) 12.00		Spud Date 3/2/2004		P & A Date			
Comment NO RECENT TAG OR PBDT AVAILABLE									
Directions To Well									
Congressional Location									
Quarter 1	Quarter 2	Quarter 3 NW	Quarter 4 SW	Section 33	Township 6 N	Twtnshp N...	Range 64	Rng E/W Dir W	
Bottom Hole Location									
North-South Distance (ft)		From N or S Line		East-West Distance (ft)			From E or W Line		
Plug Back Total Depths									
Date	Depth (ftKB)	Method			Com				
3/6/2004	6,994.0	CASING TALLY			TOP OF FLOAT COLLAR				
3/15/2004	6,965.0	CASED HOLE LOG			CBL DEPTH LOGGER				
Wellbore Sections									
Section Des			Size (in)		Act Top, MD (ftKB)		Act Btm, MD (ftKB)		
SURFACE			12 1/4		12.0		672.0		
PRODUCTION			7 7/8		672.0		7,020.0		
Zone Statuses									
Zone Name	Status Date	Status	Fluid Type		Job	Prod Method			
NIOBRARA	4/1/2004	PR			DRILLING/CO...				
NIOBRARA	4/1/2008	PR			RE-FRAC, 1/23...				
CODELL	4/1/2004	PR			DRILLING/CO...				
Casing Strings									
Surface, 666.0ftKB									
Casing Description Surface		Run Date 3/2/2004	OD (in) 8 5/8	Wt/Len (l... 24.00	Grade J-55	Top, MD (ft... 12.0	MD (ftKB) 666.0		
Production, 7,010.0ftKB									
Casing Description Production		Run Date 3/6/2004	OD (in) 4 1/2	Wt/Len (l... 11.60	Grade I-80	Top, MD (ft... 12.0	MD (ftKB) 7,010.0		
Cement									
Description SURFACE CASING CEMENT					Top Depth (ftKB) 12.0		Bottom Depth (ftKB) 666.0		
Description PRODUCTION CASING CEMENT					Top Depth (ftKB) 3,000.0		Bottom Depth (ftKB) 7,010.0		
Tubing Strings									
Tubing Description Tubing - Production		Run Date 3/26/2008	String... 2 3/8	ID (in) 1.995	Wt (lb/ft) 4.70	Grade J-55	Len (ft) 6,812.00	Set De...	
Tubing Components									
Item Des	OD (in)	Wt (lb/ft)	Grade	Jts	Len (ft)	Btm (ftKB)	Btm (TVD) (ftKB)		
EUE 8rd Tubing	2 3/8	4.70	J-55	1	6,810.00	6,822.0			
Seal Nipple	2 3/8			1	1.00	6,823.0			
Notched collar	2 3/8			1	1.00	6,824.0			
Perforation Data									
Zone	Brnch/St g	Entered Shot Total	Top (ftKB)		Btm (ftKB)		Date		
NIOBRARA, ORIGINAL HOLE	A	36	6,569.00		6,587.00		1/25/2008		
NIOBRARA, ORIGINAL HOLE	A	14	6,570.00		6,585.00		3/18/2004		
NIOBRARA, ORIGINAL HOLE	B	32	6,676.00		6,708.00		1/25/2008		
NIOBRARA, ORIGINAL HOLE	B	44	6,677.00		6,721.00		3/18/2004		
CODELL, ORIGINAL HOLE		14	6,862.00		6,876.00		3/15/2004		

Well Name: EHRlich 19-33

VERTICAL - ORIGINAL HOLE, 1/13/2016 1:00:21 PM



Stimulations & Treatments

Date	Zone	Primary Job Type
3/18/2004	NIOBRARA-CODELL, ORIGINAL HOLE	DRILLING/COMPLETION - ORIGINAL
Technical Result	Tech Result Details	Tech Result Note

Comment
LIMITED ENTRY FRAC.

DFIT ON CODELL ONLY PRIOR TO FRAC: BREAK @ 2560 PSI, 7 BPM. ISIP 2350, 5 MIN 1930 PSI

SCREENOUT 30 BBLS INTO FLUSH, DID NOT PUMP REST OF SAND INTO FORMATION (12,000#)

Date	Zone	Primary Job Type
2/4/2008	NIOBRARA, ORIGINAL HOLE	RE-FRAC
Technical Result	Tech Result Details	Tech Result Note

Comment

Other In Hole

Run Date	Des	OD (in)	Top (ftKB)	Btm (ftKB)

Logs

Date	Type	Top, MD (ftKB)	Btm, MD (ftKB)
3/6/2004	COMPENSATED DENSITY	667.0	7,008.0
3/6/2004	INDUCTION	667.0	7,020.0
3/15/2004	CBL/CCL/GR	2,800.0	6,963.0