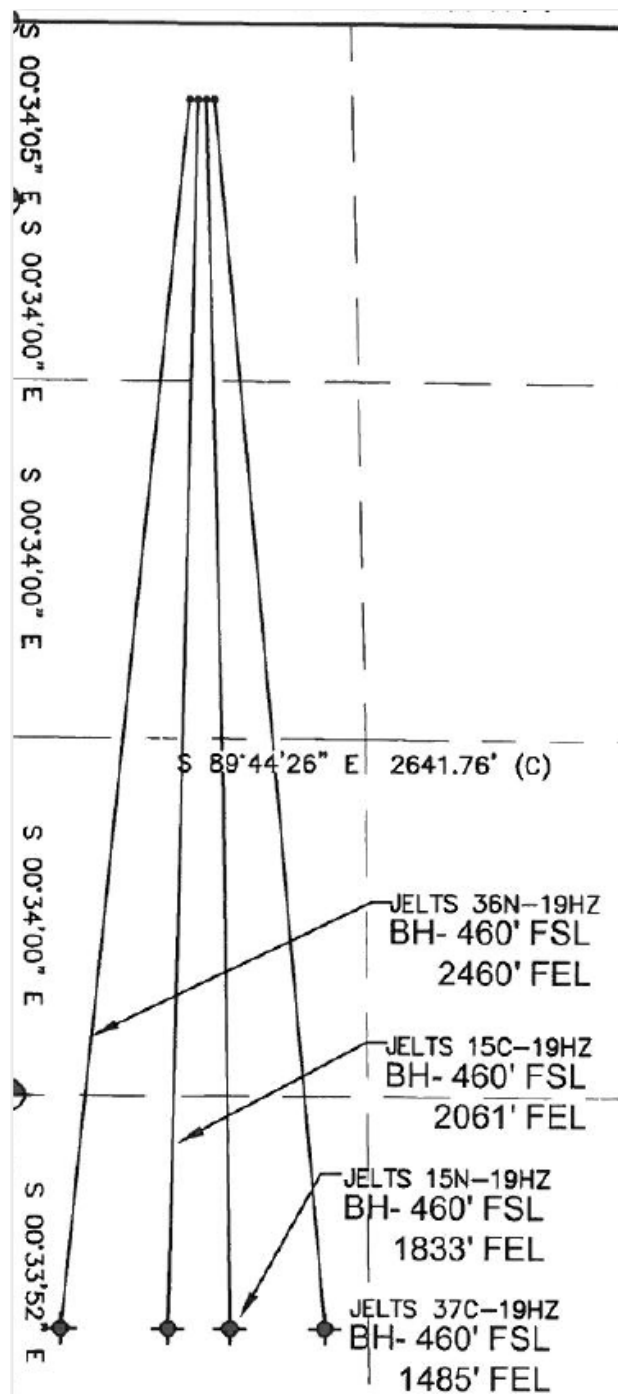


Jelts AL 37C-19HZ Interpretation

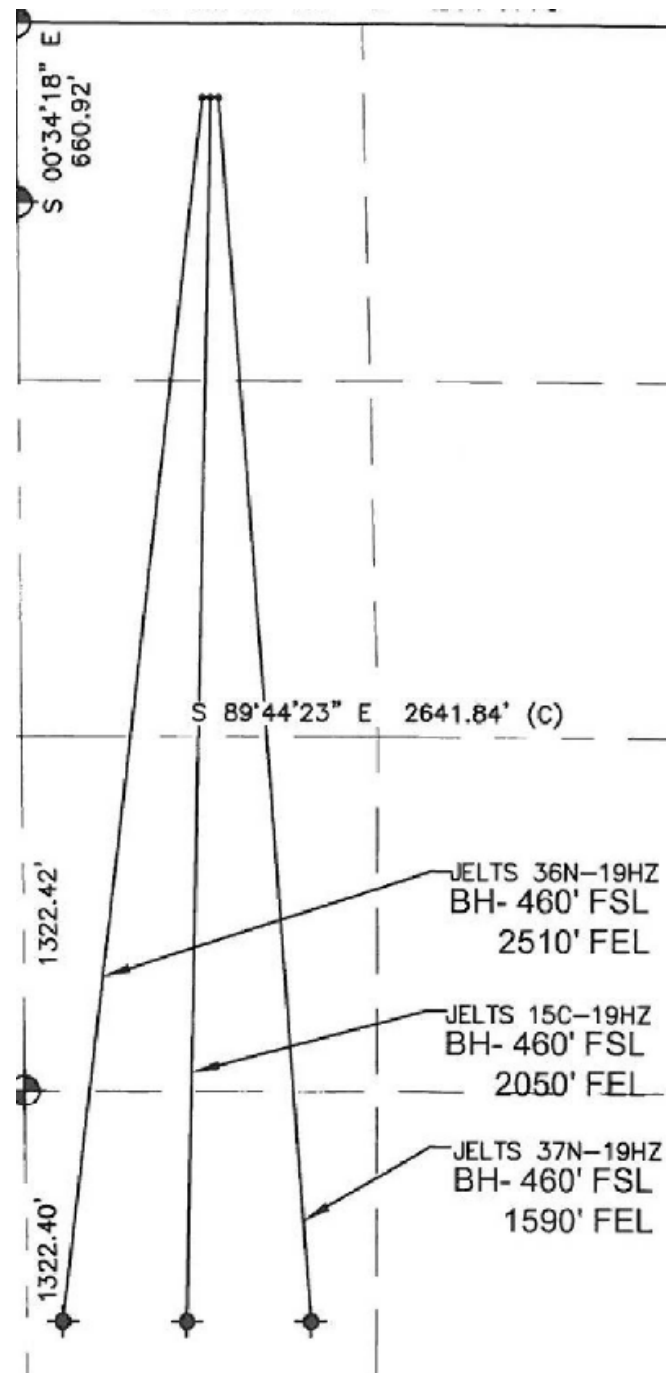
Kevin Kuzio 3/4/2015

- Pad originally planned as a 4 well pad
- Last minute it was changed to a 3 well pad (layouts on next slide)
- Three wells were drilled by the surface rig, with the last well being input into Open Wells as the 37C-19HZ
 1. Jelts 36N-19HZ (surface drilled cemented 4/25/2013)
 2. Jelts 15C-19HZ (surface drilled cemented 4/26 & 4/27/2013)
 3. Jelts 37C-19HZ (surface drilled cemented 4/28/2013)
- I believe regulatory interpreted the situation as four wells were drilled. Or it has been perceived at a later date that four wells were drilled.
 1. Jelts 36N-19HZ
 2. Jelts 15C-19HZ
 3. Jelts 15N-19HZ
 4. Jelts 37C-19HZ
- Regulatory then submitted name changes for the 15N to 37N, and the 37C to AL 37C with the intent of the AL 37C being abandoned (if the belief at that time was that the well was drilled). If regulatory knew the well was not drilled the change of name was made to preserve the lease.
- In Open Wells it appears the 37N well was created and the surface events from the 37C were copied over. The 37C well was then renamed to the AL 37C. (Open Wells evidence on following slides)

- 4 well plat



- 3 well plat



Change of Name/Form 4

☐ **REMOVE FROM SURFACE BOND** Signed surface use agreement is a required attachment

☒ **CHANGE OF WELL, FACILITY OR OIL & GAS LOCATION NAME OR NUMBER**

From:	Name	<u>JELTS</u>	Number	<u>37C-19HZ</u>	Effective Date:	<u>04/28/2013</u>
To:	Name	<u>JELTS AL</u>	Number	<u>37C-19HZ</u>		

☒ **CHANGE OF WELL, FACILITY OR OIL & GAS LOCATION NAME OR NUMBER**

From:	Name	<u>JELTS</u>	Number	<u>15N-19HZ</u>	Effective Date:	<u>04/28/2013</u>
To:	Name	<u>JELTS</u>	Number	<u>37N-19HZ</u>		

• Jelts AL 37C-19HZ

JEFFERS 42-35

- JELTS 1-19HZ PAD
- JELTS 2-19HZ PAD
 - JELTS 15C-19HZ
 - JELTS 36N-19HZ
 - JELTS 37N-19HZ
 - JELTS 37N-19HZ (<no date>)
 - EQP, DEVELOPMENT (<no date>)
 - DRL, DEVELOPMENT (4/27/201)
 - CMP, DEVELOPMENT (8/14/20)
 - WWE, DEVELOPMENT (2/22/20)
 - JELTS AL 37C-19HZ
 - JELTS AL 37C-19HZ (<no date>)
 - EQP, DEVELOPMENT (<no date>)
 - CMP, DEVELOPMENT (<no date>)
 - DRL, DEVELOPMENT (4/27/201)

Event	ST	No	Date	Type	Description
CMP 0	00	1	4/19/2013	Cost Estimate and AFE	AFE NO. 2074193
EQP 0	00	1	4/19/2013	Cost Estimate and AFE	AFE NO. 2074193
DRL (4/27/2013)	00	1	4/27/2013	Cost Estimate and AFE	AFE NO. 2074193
DRL (4/27/2013)	00	1	4/27/2013	Daily Operations	SURF- DAY 1 MIRU
DRL (4/27/2013)	00	1	4/28/2013	Material Transfer	CSG TRANS FOR ALL RIGS
DRL (4/27/2013)	00	1	4/28/2013	Casing	9 5/8" SURFACE CASING
DRL (4/27/2013)	00	1	4/28/2013	Pipe Tally	Run 9 5/8" SURFACE CASING
DRL (4/27/2013)	00	1	4/28/2013	Cementing	CEMENT 9 5/8" SURFACE CASING
DRL (4/27/2013)	00	2	4/28/2013	Daily Operations	RUN 9 5/8" SURFACE CASING, CEMEN...

Anadarko

• Jelts 37N-19HZ – Both wells have the surface drilled on 4/28/2013 by the same rig

JEFFERS 42-35

- JELTS 1-19HZ PAD
- JELTS 2-19HZ PAD
 - JELTS 15C-19HZ
 - JELTS 36N-19HZ
 - JELTS 37N-19HZ
 - JELTS 37N-19HZ
 - EQP, DEVELOPMENT (<no date>)
 - DRL, DEVELOPMENT (4/27/201)
 - CMP, DEVELOPMENT (8/14/20)
 - WWE, DEVELOPMENT (2/22/20)
 - JELTS AL 37C-19HZ
 - JELTS AL 37C-19HZ (<no date>)
 - EQP, DEVELOPMENT (<no date>)
 - CMP, DEVELOPMENT (<no date>)

Event	ST	No	Date	Type	Description
DRL (4/27/2013)	00	1	4/27/2013	Daily Operations	SURF- DAY 1 MIRU
EQP 0	00	1	4/27/2013	Daily Operations	Battery Construction
DRL (4/27/2013)	00	1	4/28/2013	Casing	9 5/8" SURFACE CASING
DRL (4/27/2013)	00	1	4/28/2013	Pipe Tally	Run 9 5/8" SURFACE CASING
DRL (4/27/2013)	00	1	4/28/2013	Cementing	CEMENT 9 5/8" SURFACE CASING
DRL (4/27/2013)	00	2	4/28/2013	Daily Operations	RUN 9 5/8" SURFACE CASING, CEMEN...
DRL (4/27/2013)	00	1	5/23/2013	Cost Estimate and AFE	AFE NO. 2074191
CMP (8/14/2013)	00	1	5/23/2013	Cost Estimate and AFE	AFE NO. 2074191
EQP 0	00	1	5/23/2013	Cost Estimate and AFE	AFE NO. 2074191
DRL (4/27/2013)	00	3	7/6/2013	Daily Operations	PROD- DAY 1 MIRU
DRL (4/27/2013)	00	4	7/7/2013	Daily Operations	DRILLING REPORT SPUD WELL INTE...
DRL (4/27/2013)	00	5	7/8/2013	Daily Operations	DAILY DRILLING REPORT DRILL VERT...
DRL (4/27/2013)	00	6	7/9/2013	Daily Operations	DAILY DRILLING REPORT DRILL CURVE
DRL (4/27/2013)	00	2	7/9/2013	Pipe Tally	7" INTERMEDIATE LTC

• Jelts 37N-19HZ

Both wells have the exact same entries for the daily activities and times on the 28th

ABC ↺ 📁 🔊 🔊 🔊 🔊 Apr 28, 2013 - 2 📄 Datum RKB @5,162.00usft (above Mean Sea Level) Unit API - US Survey Feet 🏠 📶 🌐 🗑️ (0 attachments) WYSIWYG ⚙️ Edit Rig 📊 Today's Wells

General Section complete ✓

Supervisor 1RANDY CASE

Supervisor 2

EngineerMIKE SCHMIEGELT

GeologistERIN RAMAKER

Daily cost55,597 \$

Daily mud0 \$

Cum. mud cost0 \$

Cumulative total99,673 \$

Directional Company

Mud Company

MWD company

Daily cost55,597 \$

Daily mud0 \$

Cum. mud cost0 \$

Cumulative total99,673 \$

Directional Company

Mud Company

MWD company

Last est cost0.00 \$

Est date

Authorized cost1,675,647 \$

Authorization date

Objective 2HORIZONTAL WELL

DFS2.00 days

DOL2.00 days

Previous day MD967.0 usft

MD967 usft

TVD967 usft

MD plugbackusft

Progressusft

Rotating hourshr

Current ROPft/hr

Avg. ROP0.0 ft/hr

Flared gas scf

Vented gas scf

Lithology

FormationSURFACE

Hole conditionLOSING RETURNS

Formation top MDusft

Final report

Current status

SURFACE CEMENTED IN RELEASED RIG 04/28/2013 10:00HRS RDMO JELTS 15N-19HZ, MOBILIZATION TO WISHBONE F 13-24HZ PAD, MIRU ON WISHBONE 30N-24HZ PAD.

24 hr forecast

RDMO JELTS 15N-19HZ, MOBILIZATION TO WISHBONE F 13-24HZ PAD , MIRU ON WISHBONE 30N-24HZ, DRLG SURFACE

24 hr operations summary

FINISH RUN LAST 20 JIONTS OF23 JIONTS SURFACE CASING SET @ 949, FLOAT COLLAR @ 908',CEMENT SURFACE PUMP 611SKS SWIFTCM B2, RET. NO CIRC. NO CEMENT RETURNS , 1" CEMENT TOP OFF PUMP 80SKS HALCEM, RETURNED 4BBLs, WOC, ND RELEASE RIG ON 04/28/2013 10:00HR

Comments

JSA: OVERHEAD HAZZARDS, LOTO, PINCH AND CRUSH PIONTS, SLIPS AND TRIPS, CHEMICAL HAZZARDS, EMERGENCY ACTIONS AND #, MUSTER PIONT, OVERHEAD HAZZARDS, CRUSH PIONTS, INCEDENT REPORTING.

• Jelts AL 37C-19HZ

The 24 hr forecast states to MIRU on the Wishbone 30N-24HZ. The Wishbone 30N-24HZ did have its surface drilled and cemented on the 29th.

ABC ↺ 📁 🔊 🔊 🔊 🔊 Apr 28, 2013 - 2 📄 Datum RKB @5,155.00usft (above Mean Sea Level) Unit API - US Survey Feet 🏠 📶 🌐 🗑️ (0 attachments) WYSIWYG ⚙️ Edit Rig 📊 Today's Wells

General Section complete ✓

Supervisor 1RANDY CASE

Supervisor 2

EngineerMIKE SCHMIEGELT

GeologistERIN RAMAKER

Daily cost55,597 \$

Daily mud1,194 \$

Cum. mud cost5,243 \$

Cumulative total99,673 \$

Directional Company

Mud Company

MWD company

Daily cost55,597 \$

Daily mud1,194 \$

Cum. mud cost5,243 \$

Cumulative total99,673 \$

Directional Company

Mud Company

MWD company

Last est cost0.00 \$

Est date

Authorized cost1,664,351 \$

Authorization date

Objective 2HORIZONTAL WELL

DFS2.00 days

DOL2.00 days

Previous day MD960.0 usft

MD960 usft

TVD960 usft

MD plugbackusft

Progressusft

Rotating hours

Current ROPft/hr

Avg. ROP0.0 ft/hr

Flared gas scf

Vented gas scf

Lithology

FormationSURFACE

Hole conditionLOSING RETURNS

Formation top MDusft

Final report

Current status

SURFACE CEMENTED IN RELEASED RIG 04/28/2013 10:00HRS RDMO JELTS 15N-19HZ, MOBILIZATION TO WISHBONE F 13-24HZ PAD, MIRU ON WISHBONE 30N-24HZ PAD.

24 hr forecast

RDMO JELTS 15N-19HZ, MOBILIZATION TO WISHBONE F 13-24HZ PAD , MIRU ON WISHBONE 30N-24HZ, DRLG SURFACE

24 hr operations summary

FINISH RUN LAST 20 JIONTS OF23 JIONTS SURFACE CASING SET @ 949, FLOAT COLLAR @ 908',CEMENT SURFACE PUMP 611SKS SWIFTCM B2, RET. NO CIRC. NO CEMENT RETURNS , 1" CEMENT TOP OFF PUMP 80SKS HALCEM, RETURNED 4BBLs, WOC, ND RELEASE RIG ON 04/28/2013 10:00HR

Comments

JSA: OVERHEAD HAZZARDS, LOTO, PINCH AND CRUSH PIONTS, SLIPS AND TRIPS, CHEMICAL HAZZARDS, EMERGENCY ACTIONS AND #, MUSTER PIONT, OVERHEAD HAZZARDS, CRUSH PIONTS, INCEDENT REPORTING.

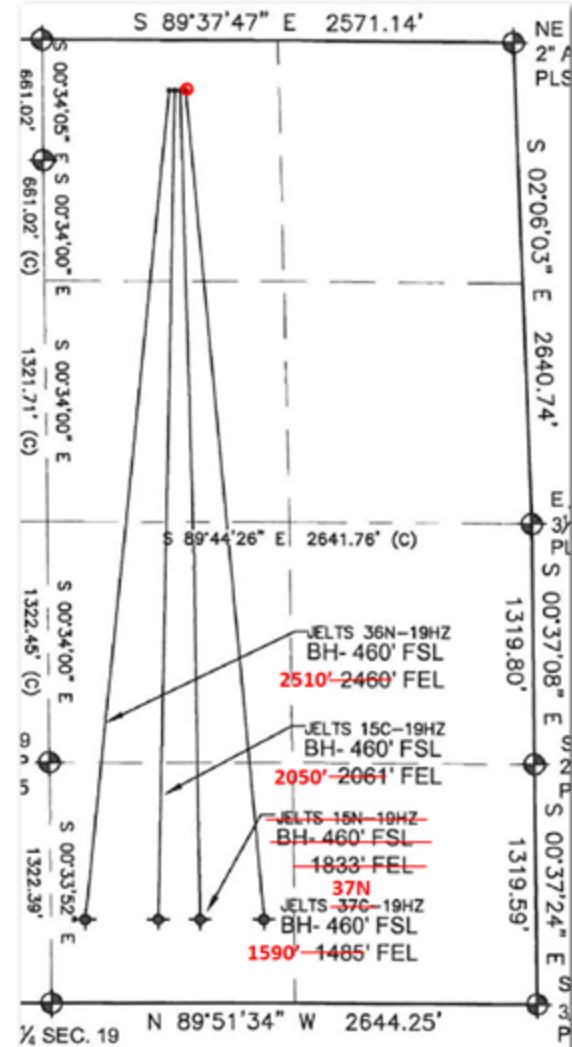
Jelts 2-19HZ Pad 3/3/15



- The pad was visited in person and there was no casing stub to be found

Summary

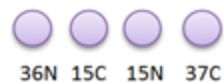
- Only three wells were drilled
 1. Jelts 36N-19HZ
 2. Jelts 15C-19HZ
 3. Jelts 37N-19HZ
- The Jelts AL 37C-19HZ does not exist and does not need to be plugged



Jelts 2-19HZ Pad

- Move 36N BHL to 2510' FEL (inside current spacing unit)
- Move 15C to 2050' FEL (inside current spacing unit)
- Drop the 15N well
- Move the 37C SHL to the current 14N SHL
 - Drop the 37C SHL from the pre set rig
- Move the 37C BHL to 1590' FEL (inside current spacing unit)
- Change the 37C to a NIO well = 37N

Permitted Surface



New Surface

