

BONANZA CREEK ENERGY INC.

WELD COUNTY, COLORADO (NAD 83)

SE SE SEC. 21 T5N R62W 6th P.M.

ANTELOPE 41-44-28HNB

ORIGINAL WELLBORE

12 January, 2016

Plan: PROPOSAL #3





Project: WELD COUNTY, COLORADO (NAD 83)
Site: SE SE SEC. 21 T5N R62W 6th P.M.
Well: ANTELOPE 41-44-28HNB
Wellbore: ORIGINAL WELLBORE
Design: PROPOSAL #3

ANNOTATIONS

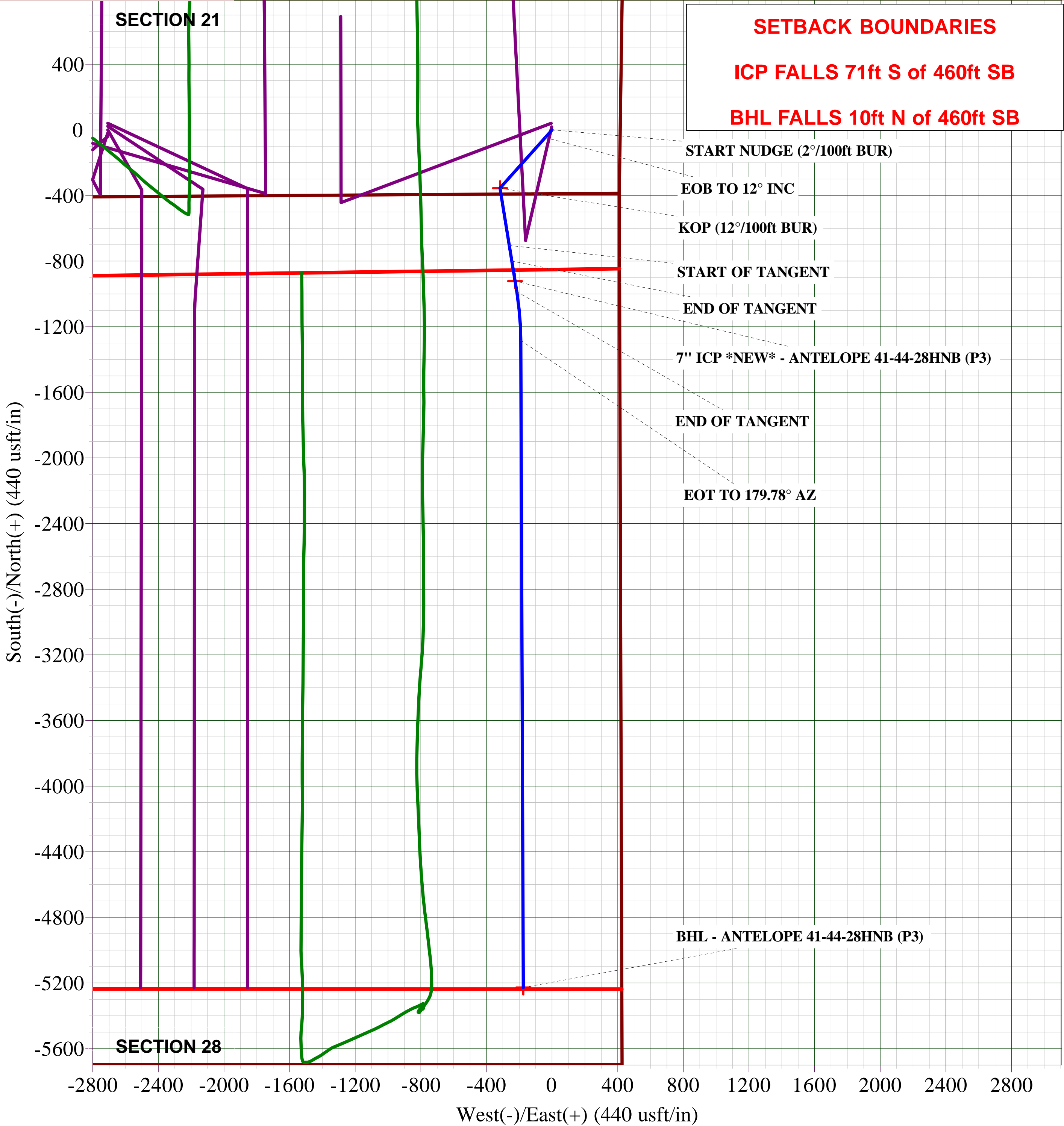
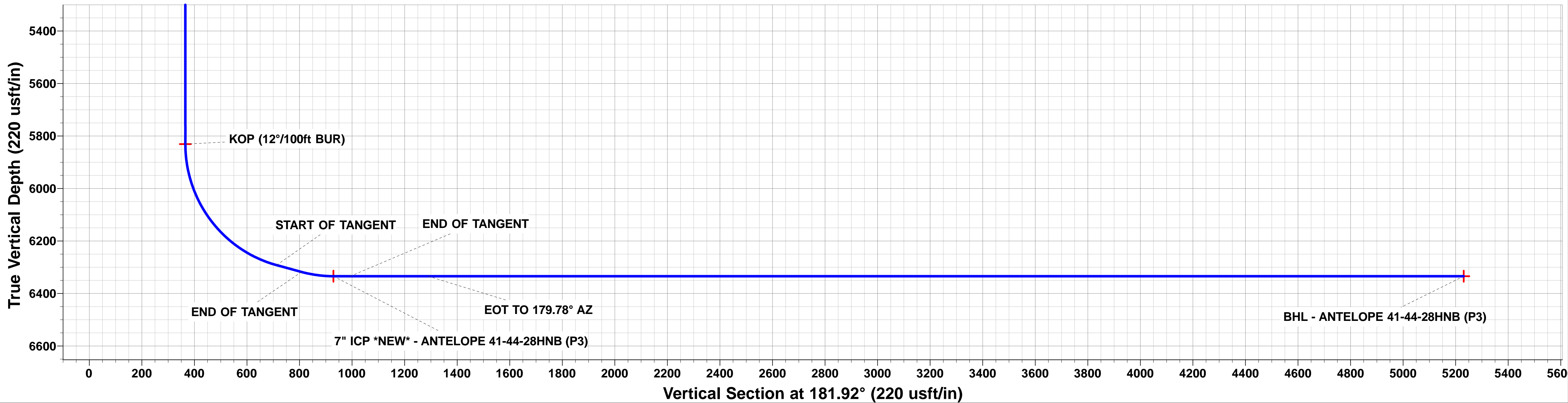
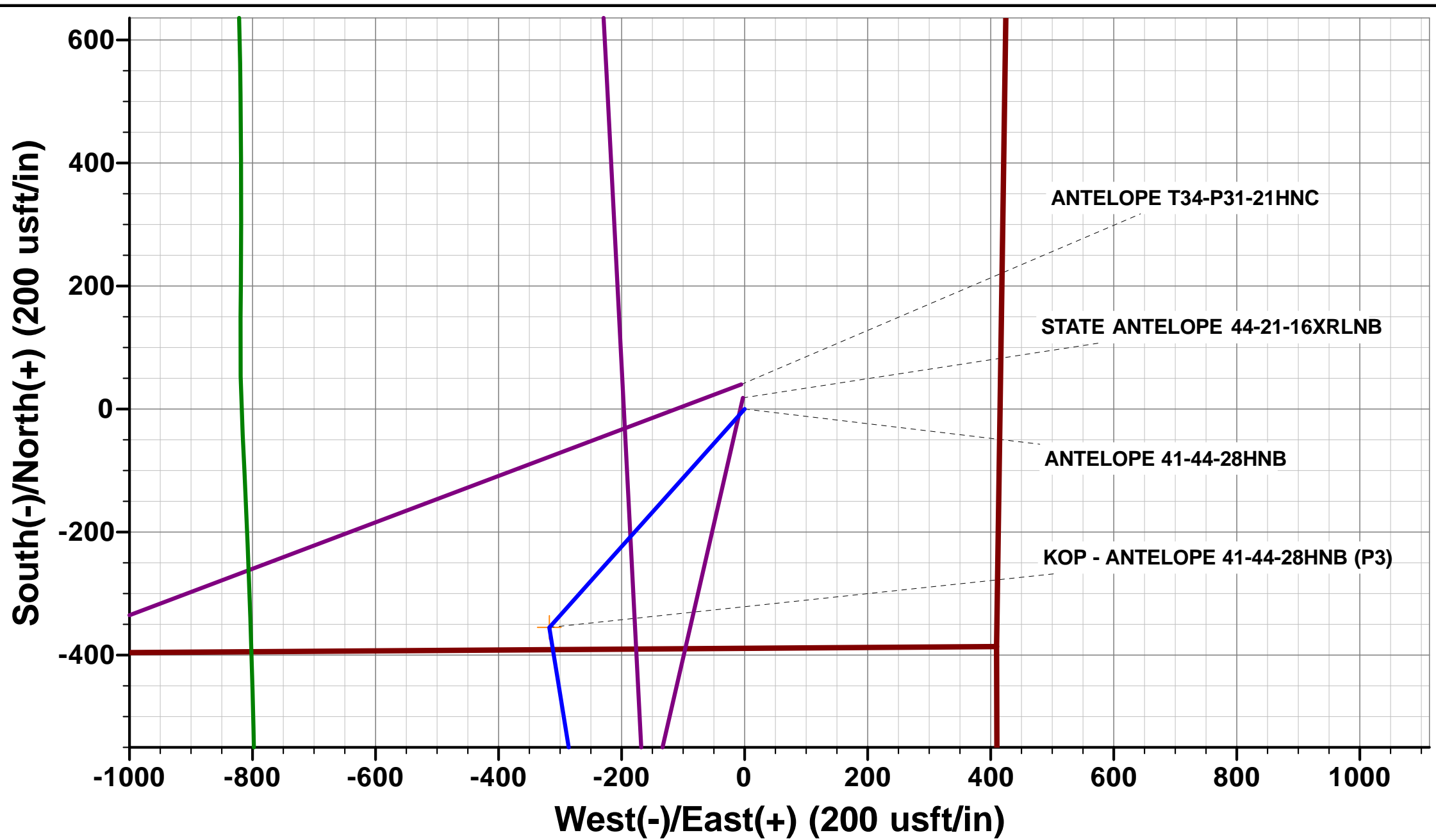
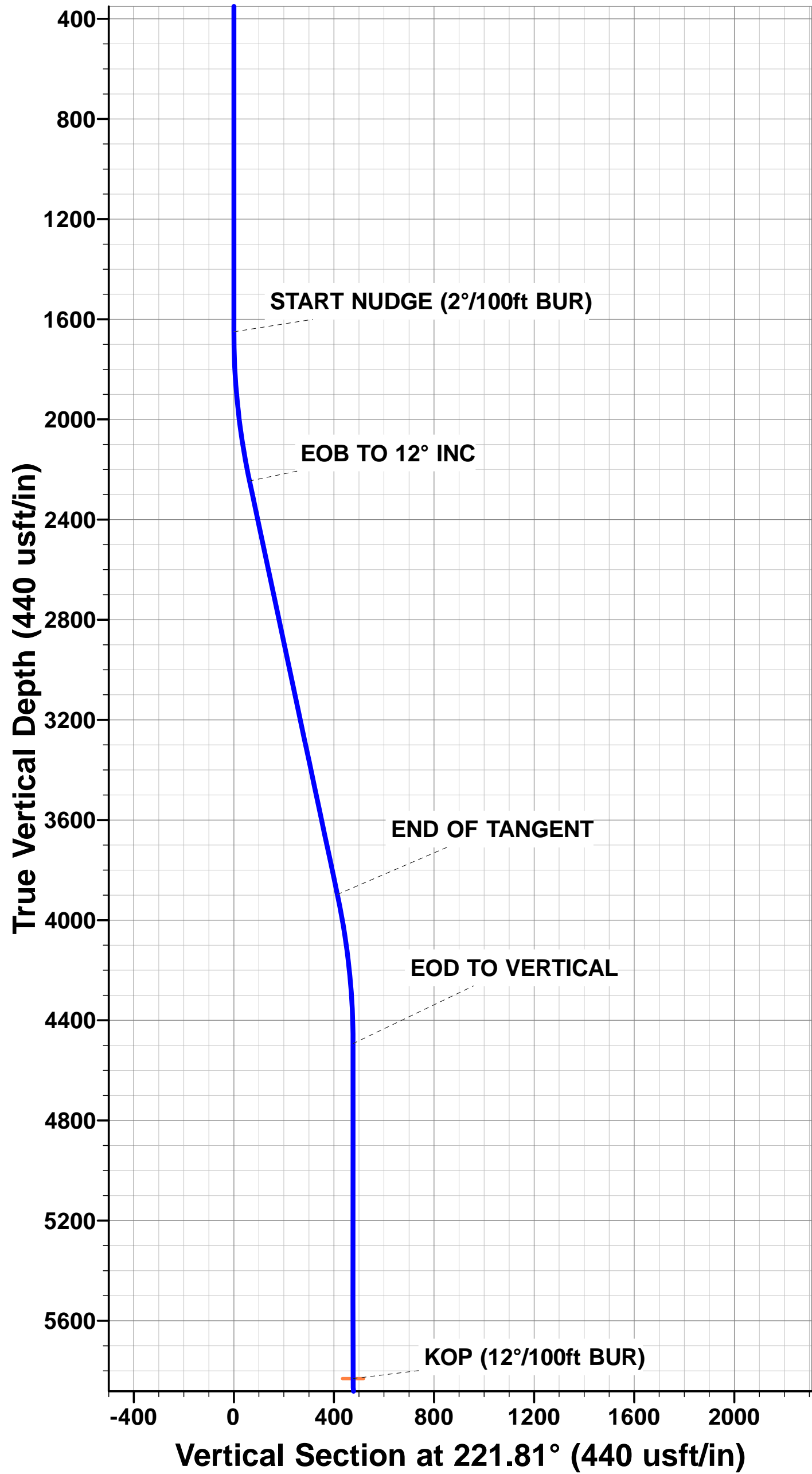
TVD	MD	Inc	Azi	+N/-S	+E/-W	VSect	Dep	Annotation
1650.0	1650.0	0.00	0.00	0.0	0.0	0.0	0.0	START NUDGE (2°/100ft BUR)
2245.7	2250.1	12.00	221.81	-46.7	-41.7	48.1	62.6	EOB TO 12° INC
3897.0	3938.3	12.00	221.81	-308.3	-275.8	317.4	413.7	END OF TANGENT
4492.7	4538.4	0.00	0.00	-355.0	-317.5	365.5	476.3	EOD TO VERTICAL
5830.7	5876.4	0.00	0.00	-355.0	-317.5	365.5	476.3	KOP (12°/100ft BUR)
6291.9	6501.4	75.00	170.80	-704.4	-260.9	712.7	830.2	START OF TANGENT
6317.8	6601.4	75.00	170.80	-799.7	-245.5	807.5	926.8	END OF TANGENT
6334.0	6726.4	90.00	170.80	-921.7	-225.7	928.8	1050.4	7" ICP *NEW* - ANTELOPE 41-44-28HNB (P3)
6334.0	6791.4	90.00	170.80	-985.9	-215.3	992.6	1115.4	END OF TANGENT
6334.0	7090.7	90.00	179.78	-1283.9	-190.8	1289.5	1414.7	EOT TO 179.78° AZ
6334.0	11034.7	90.00	179.78	-5227.8	-175.6	5230.8	5358.7	BHL - ANTELOPE 41-44-28HNB (P3)

PROPOSED LOCAL COORDINATES:

SHL: 390ft FSL & 416ft FEL Sec 21
7" ICP *NEW*: 531ft FSL & 637.5ft FEL Sec 28
BHL: 470ft FNL & 601ft FEL Sec 28

WELLBORE TARGET DETAILS (LAT/LONG)

Name	TVD	+N/-S	+E/-W	Latitude	Longitude
KOP - ANTELOPE 41-44-28HNB (P3)	5830.7	-355.0	-317.5	40.378096	-104.322220
7" ICP *NEW* - ANTELOPE 41-44-28HNB (P3)	6334.0	-921.7	-225.7	40.376540	-104.321890
BHL - ANTELOPE 41-44-28HNB (P3)	6334.0	-5227.8	-175.6	40.364720	-104.321710



Database:	EDM 5000.1 Single User Db	Local Co-ordinate Reference:	Well ANTELOPE 41-44-28HNB
Company:	BONANZA CREEK ENERGY INC.	TVD Reference:	KB-EST @ 4699.0usft (Original Well Elev)
Project:	WELD COUNTY, COLORADO (NAD 83)	MD Reference:	KB-EST @ 4699.0usft (Original Well Elev)
Site:	SE SE SEC. 21 T5N R62W 6th P.M.	North Reference:	True
Well:	ANTELOPE 41-44-28HNB	Survey Calculation Method:	Minimum Curvature
Wellbore:	ORIGINAL WELLBORE		
Design:	PROPOSAL #3		

Project	WELD COUNTY, COLORADO (NAD 83)		
Map System:	US State Plane 1983	System Datum:	Mean Sea Level
Geo Datum:	North American Datum 1983		
Map Zone:	Colorado Northern Zone		Using geodetic scale factor

Site	SE SE SEC. 21 T5N R62W 6th P.M.		
Site Position:		Northing:	1,383,089.52 usft
From:	Lat/Long	Easting:	3,327,589.29 usft
Position Uncertainty:	0.0 usft	Slot Radius:	1.10000ft
		Latitude:	40.379020
		Longitude:	-104.324110
		Grid Convergence:	0.76 °

Well	ANTELOPE 41-44-28HNB					
Well Position	+N/-S	18.2 usft	Northing:	1,383,118.94 usft	Latitude:	40.379070
	+E/-W	844.2 usft	Easting:	3,328,433.12 usft	Longitude:	-104.321080
Position Uncertainty		0.0 usft	Wellhead Elevation:	usft	Ground Level:	4,682.0 usft

Wellbore	ORIGINAL WELLBORE				
Magnetics	Model Name	Sample Date	Declination (°)	Dip Angle (°)	Field Strength (nT)
	IGRF2015	16/10/2015	8.15	66.95	52,619

Design	PROPOSAL #3			
Audit Notes:				
Version:	Phase:	PROTOTYPE	Tie On Depth:	0.0
Vertical Section:	Depth From (TVD) (usft)	+N/-S (usft)	+E/-W (usft)	Direction (°)
	6,334.0	0.0	0.0	181.92

Plan Sections											
MD (usft)	Inc (°)	Azi (°)	Vertical Depth	SS (usft)	+N/-S (usft)	+E/-W (usft)	Dogleg Rate (°/100usft)	Build Rate (°/100usft)	Turn Rate (°/100usft)	TFO (°)	Target
0.0	0.00	0.00	0.0	-4,699.0	0.0	0.0	0.00	0.00	0.00	0.00	
1,650.0	0.00	0.00	1,650.0	-3,049.0	0.0	0.0	0.00	0.00	0.00	0.00	
2,250.1	12.00	221.81	2,245.7	-2,453.3	-46.7	-41.7	2.00	2.00	0.00	221.81	
3,938.3	12.00	221.81	3,897.0	-802.0	-308.3	-275.8	0.00	0.00	0.00	0.00	
4,538.4	0.00	0.00	4,492.7	-206.3	-355.0	-317.5	2.00	-2.00	0.00	180.00	
5,876.4	0.00	0.00	5,830.7	1,131.7	-355.0	-317.5	0.00	0.00	0.00	0.00	KOP - ANTELOPE
6,501.4	75.00	170.80	6,291.9	1,592.9	-704.3	-260.9	12.00	12.00	0.00	170.80	
6,601.4	75.00	170.80	6,317.8	1,618.8	-799.7	-245.5	0.00	0.00	0.00	0.00	
6,726.4	90.00	170.80	6,334.0	1,635.0	-921.7	-225.7	12.00	12.00	0.00	0.00	
6,791.4	90.00	170.80	6,334.0	1,635.0	-985.8	-215.3	0.00	0.00	0.00	0.00	
7,090.7	90.00	179.78	6,334.0	1,635.0	-1,283.8	-190.8	3.00	0.00	3.00	90.00	
11,034.7	90.00	179.78	6,334.0	1,635.0	-5,227.8	-175.6	0.00	0.00	0.00	0.00	BHL - ANTELOPE

Database:	EDM 5000.1 Single User Db	Local Co-ordinate Reference:	Well ANTELOPE 41-44-28HNB
Company:	BONANZA CREEK ENERGY INC.	TVD Reference:	KB-EST @ 4699.0usft (Original Well Elev)
Project:	WELD COUNTY, COLORADO (NAD 83)	MD Reference:	KB-EST @ 4699.0usft (Original Well Elev)
Site:	SE SE SEC. 21 T5N R62W 6th P.M.	North Reference:	True
Well:	ANTELOPE 41-44-28HNB	Survey Calculation Method:	Minimum Curvature
Wellbore:	ORIGINAL WELLBORE		
Design:	PROPOSAL #3		

Planned Survey

MD (usft)	Inc (°)	Azi (°)	TVD (usft)	SS (usft)	+N/-S (usft)	+E/-W (usft)	Vertical Section (usft)	Dogleg Rate (°/100usft)	Build Rate (°/100usft)	Turn Rate (°/100usft)
0.0	0.00	0.00	0.0	4,699.00	0.0	0.0	0.0	0.00	0.00	0.00
100.0	0.00	0.00	100.0	4,599.00	0.0	0.0	0.0	0.00	0.00	0.00
200.0	0.00	0.00	200.0	4,499.00	0.0	0.0	0.0	0.00	0.00	0.00
300.0	0.00	0.00	300.0	4,399.00	0.0	0.0	0.0	0.00	0.00	0.00
400.0	0.00	0.00	400.0	4,299.00	0.0	0.0	0.0	0.00	0.00	0.00
500.0	0.00	0.00	500.0	4,199.00	0.0	0.0	0.0	0.00	0.00	0.00
600.0	0.00	0.00	600.0	4,099.00	0.0	0.0	0.0	0.00	0.00	0.00
700.0	0.00	0.00	700.0	3,999.00	0.0	0.0	0.0	0.00	0.00	0.00
800.0	0.00	0.00	800.0	3,899.00	0.0	0.0	0.0	0.00	0.00	0.00
900.0	0.00	0.00	900.0	3,799.00	0.0	0.0	0.0	0.00	0.00	0.00
1,000.0	0.00	0.00	1,000.0	3,699.00	0.0	0.0	0.0	0.00	0.00	0.00
1,100.0	0.00	0.00	1,100.0	3,599.00	0.0	0.0	0.0	0.00	0.00	0.00
1,200.0	0.00	0.00	1,200.0	3,499.00	0.0	0.0	0.0	0.00	0.00	0.00
1,300.0	0.00	0.00	1,300.0	3,399.00	0.0	0.0	0.0	0.00	0.00	0.00
1,400.0	0.00	0.00	1,400.0	3,299.00	0.0	0.0	0.0	0.00	0.00	0.00
1,500.0	0.00	0.00	1,500.0	3,199.00	0.0	0.0	0.0	0.00	0.00	0.00
1,600.0	0.00	0.00	1,600.0	3,099.00	0.0	0.0	0.0	0.00	0.00	0.00
START NUDGE (2°/100ft BUR)										
1,650.0	0.00	0.00	1,650.0	3,049.00	0.0	0.0	0.0	0.00	0.00	0.00
1,700.0	1.00	221.81	1,700.0	2,999.00	-0.3	-0.3	0.3	2.00	2.00	0.00
1,800.0	3.00	221.81	1,799.9	2,899.07	-2.9	-2.6	3.0	2.00	2.00	0.00
1,900.0	5.00	221.81	1,899.7	2,799.32	-8.1	-7.3	8.4	2.00	2.00	0.00
2,000.0	7.00	221.81	1,999.1	2,699.87	-15.9	-14.2	16.4	2.00	2.00	0.00
2,100.0	9.00	221.81	2,098.2	2,600.85	-26.3	-23.5	27.1	2.00	2.00	0.00
2,200.0	11.00	221.81	2,196.6	2,502.37	-39.2	-35.1	40.4	2.00	2.00	0.00
EOB TO 12° INC										
2,250.1	12.00	221.81	2,245.7	2,453.28	-46.7	-41.7	48.1	2.00	2.00	0.00
2,300.0	12.00	221.81	2,294.5	2,404.47	-54.4	-48.7	56.0	0.00	0.00	0.00
2,400.0	12.00	221.81	2,392.3	2,306.66	-69.9	-62.5	72.0	0.00	0.00	0.00
2,500.0	12.00	221.81	2,490.2	2,208.84	-85.4	-76.4	87.9	0.00	0.00	0.00
2,600.0	12.00	221.81	2,588.0	2,111.03	-100.9	-90.2	103.9	0.00	0.00	0.00
2,700.0	12.00	221.81	2,685.8	2,013.21	-116.4	-104.1	119.8	0.00	0.00	0.00
2,800.0	12.00	221.81	2,783.6	1,915.40	-131.9	-118.0	135.8	0.00	0.00	0.00
2,900.0	12.00	221.81	2,881.4	1,817.58	-147.4	-131.8	151.7	0.00	0.00	0.00
3,000.0	12.00	221.81	2,979.2	1,719.77	-162.9	-145.7	167.7	0.00	0.00	0.00
3,100.0	12.00	221.81	3,077.0	1,621.96	-178.4	-159.6	183.7	0.00	0.00	0.00
3,200.0	12.00	221.81	3,174.9	1,524.14	-193.9	-173.4	199.6	0.00	0.00	0.00
3,300.0	12.00	221.81	3,272.7	1,426.33	-209.4	-187.3	215.6	0.00	0.00	0.00
3,400.0	12.00	221.81	3,370.5	1,328.51	-224.9	-201.1	231.5	0.00	0.00	0.00
3,500.0	12.00	221.81	3,468.3	1,230.70	-240.4	-215.0	247.5	0.00	0.00	0.00
3,600.0	12.00	221.81	3,566.1	1,132.88	-255.9	-228.9	263.4	0.00	0.00	0.00
3,700.0	12.00	221.81	3,663.9	1,035.07	-271.4	-242.7	279.4	0.00	0.00	0.00
3,800.0	12.00	221.81	3,761.7	937.25	-286.9	-256.6	295.3	0.00	0.00	0.00
3,900.0	12.00	221.81	3,859.6	839.44	-302.4	-270.4	311.3	0.00	0.00	0.00
END OF TANGENT										
3,938.3	12.00	221.81	3,897.0	801.98	-308.3	-275.8	317.4	0.00	0.00	0.00
4,000.0	10.77	221.81	3,957.5	741.49	-317.4	-283.9	326.8	2.00	-2.00	0.00
4,100.0	8.77	221.81	4,056.1	642.95	-330.1	-295.2	339.8	2.00	-2.00	0.00
4,200.0	6.77	221.81	4,155.1	543.87	-340.1	-304.2	350.1	2.00	-2.00	0.00
4,300.0	4.77	221.81	4,254.6	444.38	-347.6	-310.9	357.9	2.00	-2.00	0.00
4,400.0	2.77	221.81	4,354.4	344.60	-352.5	-315.3	362.9	2.00	-2.00	0.00
4,500.0	0.77	221.81	4,454.3	244.65	-354.8	-317.3	365.3	2.00	-2.00	0.00
EOD TO VERTICAL										
4,538.4	0.00	0.00	4,492.7	206.26	-355.0	-317.5	365.5	2.00	-2.00	0.00

Database:	EDM 5000.1 Single User Db	Local Co-ordinate Reference:	Well ANTELOPE 41-44-28HNB
Company:	BONANZA CREEK ENERGY INC.	TVD Reference:	KB-EST @ 4699.0usft (Original Well Elev)
Project:	WELD COUNTY, COLORADO (NAD 83)	MD Reference:	KB-EST @ 4699.0usft (Original Well Elev)
Site:	SE SE SEC. 21 T5N R62W 6th P.M.	North Reference:	True
Well:	ANTELOPE 41-44-28HNB	Survey Calculation Method:	Minimum Curvature
Wellbore:	ORIGINAL WELLBORE		
Design:	PROPOSAL #3		

Planned Survey

MD (usft)	Inc (°)	Azi (°)	TVD (usft)	SS (usft)	+N/-S (usft)	+E/-W (usft)	Vertical Section (usft)	Dogleg Rate (°/100usft)	Build Rate (°/100usft)	Turn Rate (°/100usft)
4,600.0	0.00	0.00	4,554.3	144.66	-355.0	-317.5	365.5	0.00	0.00	0.00
4,700.0	0.00	0.00	4,654.3	44.66	-355.0	-317.5	365.5	0.00	0.00	0.00
4,800.0	0.00	0.00	4,754.3	-55.34	-355.0	-317.5	365.5	0.00	0.00	0.00
4,900.0	0.00	0.00	4,854.3	-155.34	-355.0	-317.5	365.5	0.00	0.00	0.00
5,000.0	0.00	0.00	4,954.3	-255.34	-355.0	-317.5	365.5	0.00	0.00	0.00
5,100.0	0.00	0.00	5,054.3	-355.34	-355.0	-317.5	365.5	0.00	0.00	0.00
5,200.0	0.00	0.00	5,154.3	-455.34	-355.0	-317.5	365.5	0.00	0.00	0.00
5,300.0	0.00	0.00	5,254.3	-555.34	-355.0	-317.5	365.5	0.00	0.00	0.00
5,400.0	0.00	0.00	5,354.3	-655.34	-355.0	-317.5	365.5	0.00	0.00	0.00
5,500.0	0.00	0.00	5,454.3	-755.34	-355.0	-317.5	365.5	0.00	0.00	0.00
5,600.0	0.00	0.00	5,554.3	-855.34	-355.0	-317.5	365.5	0.00	0.00	0.00
5,700.0	0.00	0.00	5,654.3	-955.34	-355.0	-317.5	365.5	0.00	0.00	0.00
5,800.0	0.00	0.00	5,754.3	-1,055.34	-355.0	-317.5	365.5	0.00	0.00	0.00
KOP (12°/100ft BUR)										
5,876.4	0.00	0.00	5,830.7	-1,131.74	-355.0	-317.5	365.5	0.00	0.00	0.00
5,900.0	2.84	170.80	5,854.3	-1,155.33	-355.6	-317.4	366.0	12.02	12.02	0.00
6,000.0	14.84	170.80	5,953.0	-1,253.97	-370.7	-315.0	381.1	12.00	12.00	0.00
6,100.0	26.84	170.80	6,046.3	-1,347.26	-405.8	-309.3	415.9	12.00	12.00	0.00
6,200.0	38.84	170.80	6,130.1	-1,431.12	-459.2	-300.6	469.0	12.00	12.00	0.00
6,300.0	50.84	170.80	6,200.9	-1,501.91	-528.7	-289.4	538.1	12.00	12.00	0.00
6,400.0	62.84	170.80	6,255.5	-1,556.51	-611.2	-276.0	620.1	12.00	12.00	0.00
6,500.0	74.84	170.80	6,291.5	-1,592.54	-703.0	-261.1	711.4	12.00	12.00	0.00
START OF TANGENT										
6,501.4	75.00	170.80	6,291.9	-1,592.91	-704.4	-260.9	712.7	11.62	11.62	0.00
6,600.0	75.00	170.80	6,317.4	-1,618.43	-798.4	-245.7	806.2	0.00	0.00	0.00
END OF TANGENT										
6,601.4	75.00	170.80	6,317.8	-1,618.79	-799.7	-245.5	807.5	0.00	0.00	0.00
6,700.0	86.84	170.80	6,333.3	-1,634.32	-895.7	-229.9	902.9	12.01	12.01	0.00
7" ICP *NEW* - ANTELOPE 41-44-28HNB (P3)										
6,726.4	90.00	170.80	6,334.0	-1,635.05	-921.7	-225.7	928.8	11.98	11.98	0.00
END OF TANGENT										
6,791.4	90.00	170.80	6,334.0	-1,635.05	-985.9	-215.3	992.6	0.00	0.00	0.00
6,800.0	90.00	171.06	6,334.0	-1,635.05	-994.4	-214.0	1,001.0	3.02	0.00	3.02
6,900.0	90.00	174.06	6,334.0	-1,635.05	-1,093.5	-201.0	1,099.7	3.00	0.00	3.00
7,000.0	90.00	177.06	6,334.0	-1,635.05	-1,193.2	-193.3	1,199.0	3.00	0.00	3.00
EOT TO 179.78° AZ										
7,090.7	90.00	179.78	6,334.0	-1,635.05	-1,283.9	-190.8	1,289.5	3.00	0.00	3.00
7,100.0	90.00	179.78	6,334.0	-1,635.04	-1,293.2	-190.7	1,298.8	0.00	0.00	0.00
7,200.0	90.00	179.78	6,334.0	-1,635.04	-1,393.2	-190.4	1,398.8	0.00	0.00	0.00
7,300.0	90.00	179.78	6,334.0	-1,635.04	-1,493.2	-190.0	1,498.7	0.00	0.00	0.00
7,400.0	90.00	179.78	6,334.0	-1,635.04	-1,593.2	-189.6	1,598.6	0.00	0.00	0.00
7,500.0	90.00	179.78	6,334.0	-1,635.04	-1,693.2	-189.2	1,698.6	0.00	0.00	0.00
7,600.0	90.00	179.78	6,334.0	-1,635.04	-1,793.2	-188.8	1,798.5	0.00	0.00	0.00
7,700.0	90.00	179.78	6,334.0	-1,635.04	-1,893.2	-188.4	1,898.4	0.00	0.00	0.00
7,800.0	90.00	179.78	6,334.0	-1,635.04	-1,993.2	-188.0	1,998.3	0.00	0.00	0.00
7,900.0	90.00	179.78	6,334.0	-1,635.04	-2,093.2	-187.7	2,098.3	0.00	0.00	0.00
8,000.0	90.00	179.78	6,334.0	-1,635.03	-2,193.2	-187.3	2,198.2	0.00	0.00	0.00
8,100.0	90.00	179.78	6,334.0	-1,635.03	-2,293.2	-186.9	2,298.1	0.00	0.00	0.00
8,200.0	90.00	179.78	6,334.0	-1,635.03	-2,393.2	-186.5	2,398.1	0.00	0.00	0.00
8,300.0	90.00	179.78	6,334.0	-1,635.03	-2,493.2	-186.1	2,498.0	0.00	0.00	0.00
8,400.0	90.00	179.78	6,334.0	-1,635.03	-2,593.2	-185.7	2,597.9	0.00	0.00	0.00
8,500.0	90.00	179.78	6,334.0	-1,635.03	-2,693.2	-185.3	2,697.9	0.00	0.00	0.00
8,600.0	90.00	179.78	6,334.0	-1,635.03	-2,793.2	-185.0	2,797.8	0.00	0.00	0.00

Database:	EDM 5000.1 Single User Db	Local Co-ordinate Reference:	Well ANTELOPE 41-44-28HNB
Company:	BONANZA CREEK ENERGY INC.	TVD Reference:	KB-EST @ 4699.0usft (Original Well Elev)
Project:	WELD COUNTY, COLORADO (NAD 83)	MD Reference:	KB-EST @ 4699.0usft (Original Well Elev)
Site:	SE SE SEC. 21 T5N R62W 6th P.M.	North Reference:	True
Well:	ANTELOPE 41-44-28HNB	Survey Calculation Method:	Minimum Curvature
Wellbore:	ORIGINAL WELLBORE		
Design:	PROPOSAL #3		

Planned Survey

MD (usft)	Inc (°)	Azi (°)	TVD (usft)	SS (usft)	+N/-S (usft)	+E/-W (usft)	Vertical Section (usft)	Dogleg Rate (°/100usft)	Build Rate (°/100usft)	Turn Rate (°/100usft)
8,700.0	90.00	179.78	6,334.0	-1,635.03	-2,893.2	-184.6	2,897.7	0.00	0.00	0.00
8,800.0	90.00	179.78	6,334.0	-1,635.03	-2,993.2	-184.2	2,997.6	0.00	0.00	0.00
8,900.0	90.00	179.78	6,334.0	-1,635.02	-3,093.2	-183.8	3,097.6	0.00	0.00	0.00
9,000.0	90.00	179.78	6,334.0	-1,635.02	-3,193.2	-183.4	3,197.5	0.00	0.00	0.00
9,100.0	90.00	179.78	6,334.0	-1,635.02	-3,293.2	-183.0	3,297.4	0.00	0.00	0.00
9,200.0	90.00	179.78	6,334.0	-1,635.02	-3,393.1	-182.6	3,397.4	0.00	0.00	0.00
9,300.0	90.00	179.78	6,334.0	-1,635.02	-3,493.1	-182.3	3,497.3	0.00	0.00	0.00
9,400.0	90.00	179.78	6,334.0	-1,635.02	-3,593.1	-181.9	3,597.2	0.00	0.00	0.00
9,500.0	90.00	179.78	6,334.0	-1,635.02	-3,693.1	-181.5	3,697.2	0.00	0.00	0.00
9,600.0	90.00	179.78	6,334.0	-1,635.02	-3,793.1	-181.1	3,797.1	0.00	0.00	0.00
9,700.0	90.00	179.78	6,334.0	-1,635.02	-3,893.1	-180.7	3,897.0	0.00	0.00	0.00
9,800.0	90.00	179.78	6,334.0	-1,635.01	-3,993.1	-180.3	3,996.9	0.00	0.00	0.00
9,900.0	90.00	179.78	6,334.0	-1,635.01	-4,093.1	-179.9	4,096.9	0.00	0.00	0.00
10,000.0	90.00	179.78	6,334.0	-1,635.01	-4,193.1	-179.6	4,196.8	0.00	0.00	0.00
10,100.0	90.00	179.78	6,334.0	-1,635.01	-4,293.1	-179.2	4,296.7	0.00	0.00	0.00
10,200.0	90.00	179.78	6,334.0	-1,635.01	-4,393.1	-178.8	4,396.7	0.00	0.00	0.00
10,300.0	90.00	179.78	6,334.0	-1,635.01	-4,493.1	-178.4	4,496.6	0.00	0.00	0.00
10,400.0	90.00	179.78	6,334.0	-1,635.01	-4,593.1	-178.0	4,596.5	0.00	0.00	0.00
10,500.0	90.00	179.78	6,334.0	-1,635.01	-4,693.1	-177.6	4,696.5	0.00	0.00	0.00
10,600.0	90.00	179.78	6,334.0	-1,635.00	-4,793.1	-177.2	4,796.4	0.00	0.00	0.00
10,700.0	90.00	179.78	6,334.0	-1,635.00	-4,893.1	-176.9	4,896.3	0.00	0.00	0.00
10,800.0	90.00	179.78	6,334.0	-1,635.00	-4,993.1	-176.5	4,996.2	0.00	0.00	0.00
10,900.0	90.00	179.78	6,334.0	-1,635.00	-5,093.1	-176.1	5,096.2	0.00	0.00	0.00
11,000.0	90.00	179.78	6,334.0	-1,635.00	-5,193.1	-175.7	5,196.1	0.00	0.00	0.00
BHL - ANTELOPE 41-44-28HNB (P3)										
11,034.7	90.00	179.78	6,334.0	-1,635.00	-5,227.8	-175.6	5,230.8	0.00	0.00	0.00

Plan Annotations

MD (usft)	TVD (usft)	Local Coordinates		Comment
		+N/-S (usft)	+E/-W (usft)	
1,650.0	1,650.0	0.0	0.0	START NUDGE (2°/100ft BUR)
2,250.1	2,245.7	-46.7	-41.7	EOB TO 12° INC
3,938.3	3,897.0	-308.3	-275.8	END OF TANGENT
4,538.4	4,492.7	-355.0	-317.5	EOD TO VERTICAL
5,876.4	5,830.7	-355.0	-317.5	KOP (12°/100ft BUR)
6,501.4	6,291.9	-704.4	-260.9	START OF TANGENT
6,601.4	6,317.8	-799.7	-245.5	END OF TANGENT
6,726.4	6,334.0	-921.7	-225.7	7" ICP *NEW* - ANTELOPE 41-44-28HNB (P3)
6,791.4	6,334.0	-985.9	-215.3	END OF TANGENT
7,090.7	6,334.0	-1,283.9	-190.8	EOT TO 179.78° AZ
11,034.7	6,334.0	-5,227.8	-175.6	BHL - ANTELOPE 41-44-28HNB (P3)