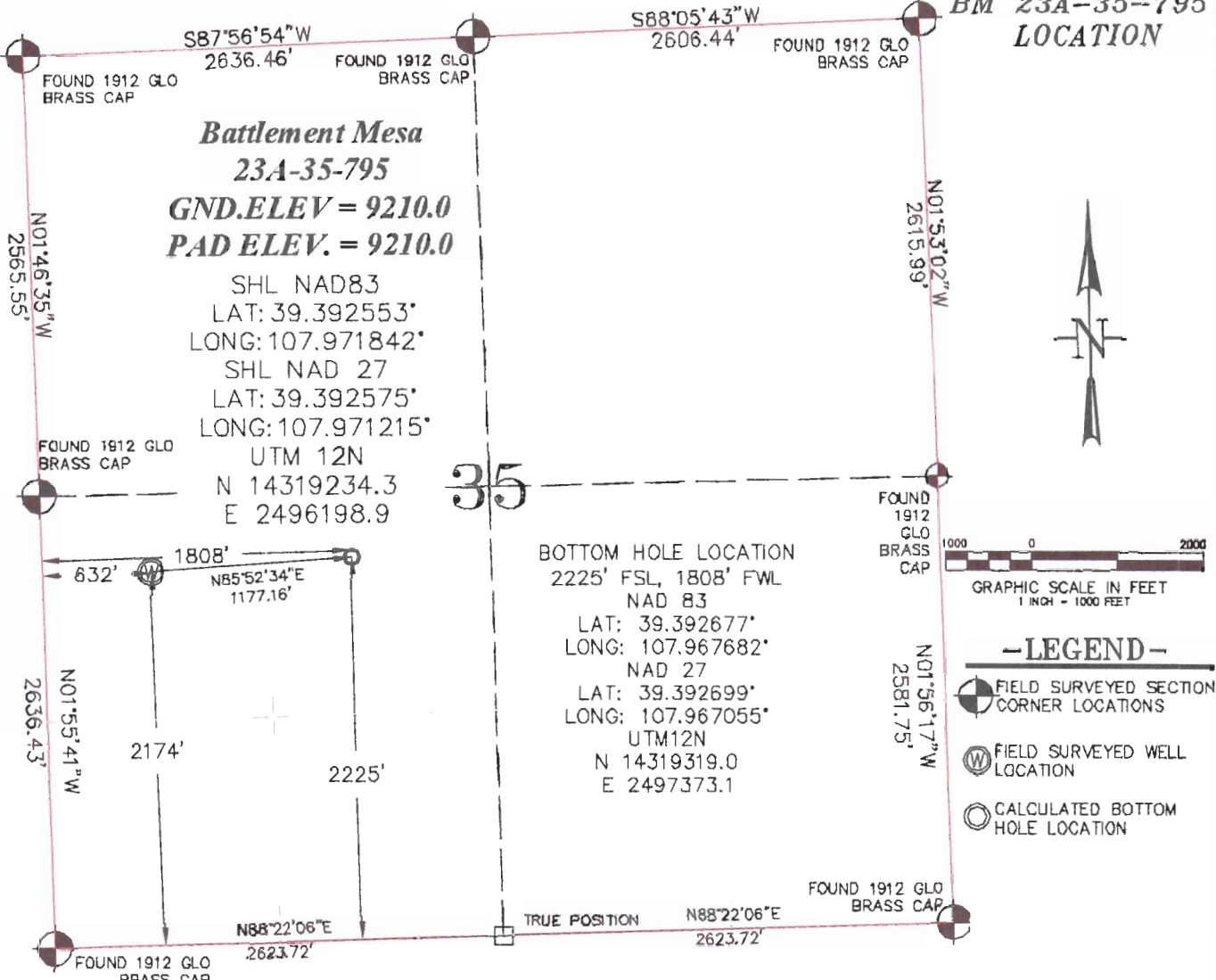


SEC. 35, T. 7 S., R. 95 W. OF THE 6TH P.M.

PLAT 1  
BM 23A-35-795  
LOCATION



THIS WELL LOCATION PLAT WAS PREPARED FOR CAERUS PICEANCE LLC TO LOCATE THE BATTLEMENT MESA #23A-35-795 WELL, 2174 FEET FROM THE SOUTH LINE SAID SECTION AND 632 FEET FROM THE WEST LINE IN THE NW1/4SW1/4 OF SECTION 35, T. 7 S., R. 95 W. OF THE 6TH P.M. GARFIELD COUNTY, COLORADO.

SURVEYORS CERTIFICATE

I, Robert Ellsworth, being a Professional Land Surveyor in the State of Colorado, do hereby certify that this Survey was made under my direct supervision and that this Plat represents said Survey.



REFERENCE NOTES

- 1) T. 7 S., R. 95 W., 6TH P.M. GLO PLAT.
- 2) U.S.G.S. QUAD: PARACHUTE, CO
- 3) ELEVATIONS BASED ON N.A.V.D. 1988 LIDAR BASED CONTROL PT CP MON 8
- 4) LATITUDES AND LONGITUDES ARE BASED ON NAD 83, COLORADO CENTRAL ZONE.
- 5) GPS OPERATOR ROBERT WOOD, OBSERVED A PDOP OF 1.8.
- 6) ALL GPS OBSERVATIONS ARE IN COMPLIANCE WITH COGCC RULE NO. 215.
- 7) SURFACE AND BOTTOM HOLE LOCATIONS ARE MEASURED 90° FROM SECTION LINES.



WELL LOCATION PLAT

CONSTRUCTION SURVEYS, INC.  
2012 SUNRISE BLVD. SILT, CO  
81652 (970)876-5753

SURVEY BY: REW 12/07/15	PDOP: 1.8
DRAWN BY: IM 12/22/15	DWG: CAERUS\BM35L-795
REVISED: REW 01/08/16	