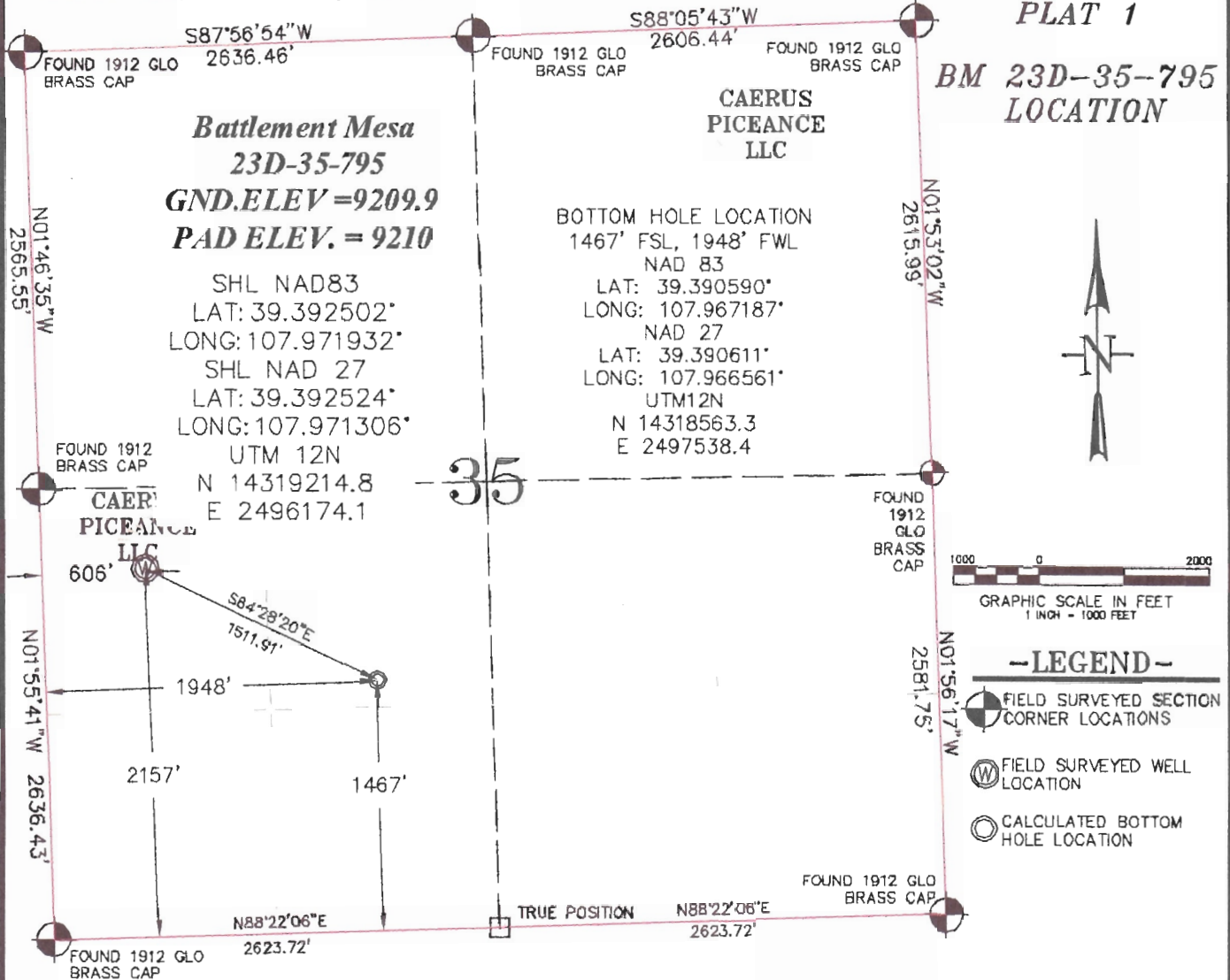


SEC. 35, T. 7 S., R. 95 W. OF THE 6TH P.M.

PLAT 1

BM 23D-35-795
LOCATION



THIS WELL LOCATION PLAT WAS PREPARED FOR CAERUS PICEANCE LLC TO LOCATE THE BATTLEMENT MESA #23D-35-795 WELL, 2157 FEET FROM THE SOUTH LINE OF SAID SECTION AND 606 FEET FROM THE WEST LINE IN THE NW1/4SW1/4 OF SECTION 35, T. 7 S., R. 95 W. OF THE 6TH P.M. GARFIELD COUNTY, COLORADO.

SURVEYOR'S CERTIFICATE

I, Robert Ellsworth, being a Professional Land Surveyor in the State of Colorado, hereby certify that this Survey was made under my direct supervision, and that this plat represents said Survey.

Robert Ellsworth
Professional Land Surveyor
No. 38312
Exp. 08/16

REFERENCE NOTES

- 1) T. 7 S., R. 95 W., 6TH P.M. GLO PLAT.
- 2) U.S.G.S. QUAD: PARACHUTE, CO
- 3) ELEVATIONS BASED ON N.A.V.D. 1988 LIDAR BASED CONTROL PT CP MON 8
- 4) LATITUDES AND LONGITUDES ARE BASED ON NAD 83, COLORADO CENTRAL ZONE.
- 5) GPS OPERATOR ROBERT WOOD, OBSERVED A PDOP OF 1.8.
- 6) ALL GPS OBSERVATIONS ARE IN COMPLIANCE WITH COGCC RULE NO. 215.
- 7) SURFACE AND BOTTOM HOLE LOCATIONS ARE MEASURED 90° FROM SECTION LINES.

Caerus Piceance LLC
CAERUS



WELL LOCATION PLAT

CONSTRUCTION SURVEYS, INC.
2012 SUNRISE BLVD. SILT, CO
81652 (970)876-5753

SURVEY BY: REW 12/07/15

PDOP: 1.8

DRAWN BY: IM 12/22/15

DWG: CAERUS\BM33L-795

REVISED: REW 01/08/16