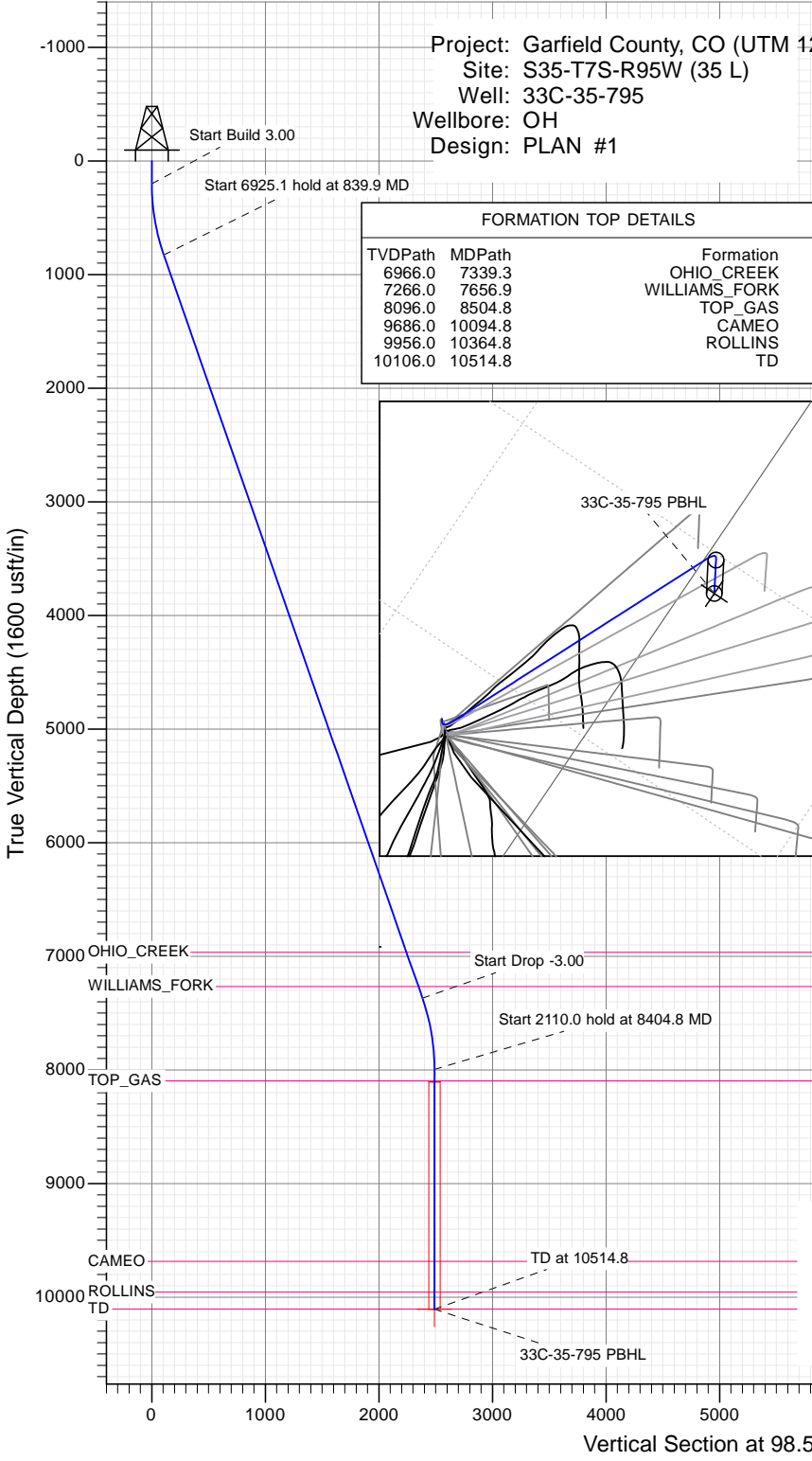




SECTION DETAILS

Sec	MD	Inc	Azi	TVD	+N/-S	+E/-W	Dleg	TFace	VSect	Target
1	0.0	0.00	0.00	0.0	0.0	0.0	0.00	0.00	0.0	
2	200.0	0.00	0.00	200.0	0.0	0.0	0.00	0.00	0.0	
3	839.9	19.20	98.53	828.0	-15.8	105.0	3.00	98.53	106.2	
4	7765.0	19.20	98.53	7368.0	-353.5	2356.8	0.00	0.00	2383.1	
5	8404.8	0.00	0.00	7996.0	-369.2	2461.8	3.00	180.00	2489.3	
6	10514.8	0.00	0.00	10106.0	-369.2	2461.8	0.00	0.00	2489.3	33C-35-795 PBHL



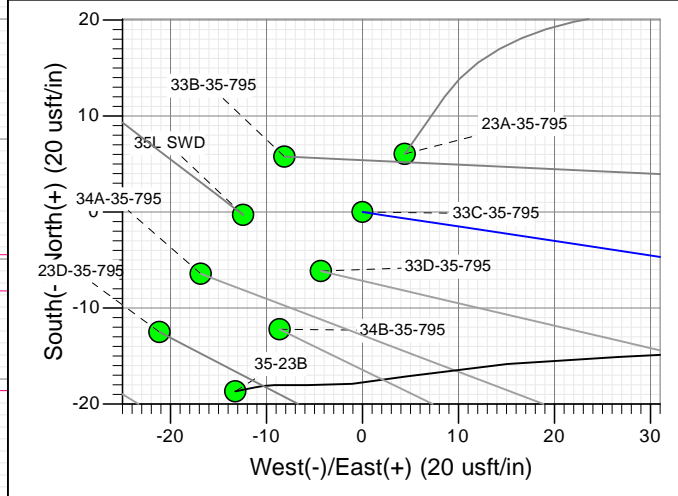
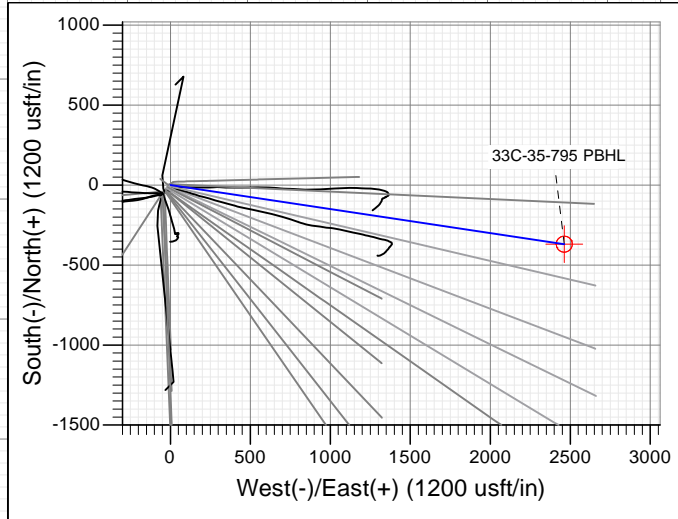
FORMATION TOP DETAILS

TVDPPath	MDPath	Formation
6966.0	7339.3	OHIO_CREEK
7266.0	7656.9	WILLIAMS_FORK
8096.0	8504.8	TOP_GAS
9686.0	10094.8	CAMEO
9956.0	10364.8	ROLLINS
10106.0	10514.8	TD

PLAN #1
33C-35-795
15XXX; LR
30' KB @ 9296.0usft (H&P 330)
Ground Level @ 9206.0
NAD 1927 - Western US
Well 33C-35-795, True North

Type	Target	Origin Type	N/S	E/W	From TVD
TD	No Target (Freehand)	Slot	0.0	0.0	0.0

Name	TVD	+N/-S	+E/-W	Latitude	Longitude
33C-35-795 PBHL	10106.0	-369.2	2461.8	39.391545	-107.962525



Azimuths to True North
 Magnetic North: 9.45°
 Magnetic Field
 Strength: 51888.8snT
 Dip Angle: 65.60°
 Date: 12/9/2015
 Model: HDGM

CASING DETAILS
 No casing data is available



WELL DETAILS: 33C-35-795

+N/-S	+E/-W	Northing	Ground Level:	Easting	Latitude	Longitude
0.0	0.0	14319228.10	9206.0	2496194.80	39.392558	-107.971231



Planning Report

Database:	USA EDM 5000 Multi Users DB	Local Co-ordinate Reference:	Well 33C-35-795
Company:	Caerus Oil & Gas	TVD Reference:	30' KB @ 9236.0usft (H&P 330)
Project:	Garfield County, CO (UTM 12N)	MD Reference:	30' KB @ 9236.0usft (H&P 330)
Site:	S35-T7S-R95W (35 L)	North Reference:	True
Well:	33C-35-795	Survey Calculation Method:	Minimum Curvature
Wellbore:	OH		
Design:	PLAN #1		

Project Garfield County, CO (UTM 12N)			
Map System:	Universal Transverse Mercator (US Survey Feet)	System Datum:	Mean Sea Level
Geo Datum:	NAD 1927 - Western US		
Map Zone:	Zone 12N (114 W to 108 W)		

Site S35-T7S-R95W (35 L)			
Site Position:		Northing:	14,319,233.60 usft
From:	Map	Easting:	2,496,186.50 usft
Position Uncertainty:	0.0 usft	Slot Radius:	13-3/16"
		Latitude:	39.392574
		Longitude:	-107.971259
		Grid Convergence:	1.92 °

Well 33C-35-795			
Well Position	+N/-S	0.0 usft	Northing: 14,319,228.10 usft
	+E/-W	0.0 usft	Easting: 2,496,194.80 usft
Position Uncertainty		0.0 usft	Wellhead Elevation: 0.0 usft
			Latitude: 39.392558
			Longitude: -107.971231
			Ground Level: 9,206.0 usft

Wellbore OH					
Magnetics	Model Name	Sample Date	Declination (°)	Dip Angle (°)	Field Strength (nT)
	HDGM	12/9/2015	9.45	65.60	51,889

Design PLAN #1				
Audit Notes:				
Version:	Phase:	PLAN	Tie On Depth:	0.0
Vertical Section:	Depth From (TVD) (usft)	+N/-S (usft)	+E/-W (usft)	Direction (°)
	0.0	0.0	0.0	98.53

Plan Sections										
Measured Depth (usft)	Inclination (°)	Azimuth (°)	Vertical Depth (usft)	+N/-S (usft)	+E/-W (usft)	Dogleg Rate (°/100usft)	Build Rate (°/100usft)	Turn Rate (°/100usft)	TFO (°)	Target
0.0	0.00	0.00	0.0	0.0	0.0	0.00	0.00	0.00	0.00	
200.0	0.00	0.00	200.0	0.0	0.0	0.00	0.00	0.00	0.00	
839.9	19.20	98.53	828.0	-15.8	105.0	3.00	3.00	0.00	98.53	
7,765.0	19.20	98.53	7,368.0	-353.5	2,356.8	0.00	0.00	0.00	0.00	
8,404.8	0.00	0.00	7,996.0	-369.2	2,461.8	3.00	-3.00	0.00	180.00	
10,514.8	0.00	0.00	10,106.0	-369.2	2,461.8	0.00	0.00	0.00	0.00	33C-35-795 PBHL

Planning Report

Database:	USA EDM 5000 Multi Users DB	Local Co-ordinate Reference:	Well 33C-35-795
Company:	Caerus Oil & Gas	TVD Reference:	30' KB @ 9236.0usft (H&P 330)
Project:	Garfield County, CO (UTM 12N)	MD Reference:	30' KB @ 9236.0usft (H&P 330)
Site:	S35-T7S-R95W (35 L)	North Reference:	True
Well:	33C-35-795	Survey Calculation Method:	Minimum Curvature
Wellbore:	OH		
Design:	PLAN #1		

Planned Survey									
Measured Depth (usft)	Inclination (°)	Azimuth (°)	Vertical Depth (usft)	+N/-S (usft)	+E/-W (usft)	Vertical Section (usft)	Dogleg Rate (°/100usft)	Build Rate (°/100u)	Comments / Formations
0.0	0.00	0.00	0.0	0.0	0.0	0.0	0.00	0.00	
100.0	0.00	0.00	100.0	0.0	0.0	0.0	0.00	0.00	
200.0	0.00	0.00	200.0	0.0	0.0	0.0	0.00	0.00	Start Build 3.00
300.0	3.00	98.53	300.0	-0.4	2.6	2.6	3.00	3.00	
400.0	6.00	98.53	399.6	-1.6	10.3	10.5	3.00	3.00	
500.0	9.00	98.53	498.8	-3.5	23.3	23.5	3.00	3.00	
600.0	12.00	98.53	597.1	-6.2	41.3	41.7	3.00	3.00	
700.0	15.00	98.53	694.3	-9.7	64.4	65.1	3.00	3.00	
800.0	18.00	98.53	790.2	-13.9	92.4	93.5	3.00	3.00	
839.9	19.20	98.53	828.0	-15.8	105.0	106.2	3.00	3.00	Start 6925.1 hold at 839.9 MD
900.0	19.20	98.53	884.8	-18.7	124.6	126.0	0.00	0.00	
1,000.0	19.20	98.53	979.2	-23.6	157.1	158.8	0.00	0.00	
1,100.0	19.20	98.53	1,073.6	-28.4	189.6	191.7	0.00	0.00	
1,200.0	19.20	98.53	1,168.1	-33.3	222.1	224.6	0.00	0.00	
1,300.0	19.20	98.53	1,262.5	-38.2	254.6	257.5	0.00	0.00	
1,400.0	19.20	98.53	1,357.0	-43.1	287.1	290.4	0.00	0.00	
1,500.0	19.20	98.53	1,451.4	-47.9	319.7	323.2	0.00	0.00	
1,600.0	19.20	98.53	1,545.8	-52.8	352.2	356.1	0.00	0.00	
1,700.0	19.20	98.53	1,640.3	-57.7	384.7	389.0	0.00	0.00	
1,800.0	19.20	98.53	1,734.7	-62.6	417.2	421.9	0.00	0.00	
1,900.0	19.20	98.53	1,829.2	-67.5	449.7	454.8	0.00	0.00	
2,000.0	19.20	98.53	1,923.6	-72.3	482.2	487.6	0.00	0.00	
2,100.0	19.20	98.53	2,018.0	-77.2	514.8	520.5	0.00	0.00	
2,200.0	19.20	98.53	2,112.5	-82.1	547.3	553.4	0.00	0.00	
2,300.0	19.20	98.53	2,206.9	-87.0	579.8	586.3	0.00	0.00	
2,400.0	19.20	98.53	2,301.4	-91.8	612.3	619.2	0.00	0.00	
2,500.0	19.20	98.53	2,395.8	-96.7	644.8	652.0	0.00	0.00	
2,600.0	19.20	98.53	2,490.2	-101.6	677.3	684.9	0.00	0.00	
2,700.0	19.20	98.53	2,584.7	-106.5	709.9	717.8	0.00	0.00	
2,800.0	19.20	98.53	2,679.1	-111.3	742.4	750.7	0.00	0.00	
2,900.0	19.20	98.53	2,773.6	-116.2	774.9	783.6	0.00	0.00	
3,000.0	19.20	98.53	2,868.0	-121.1	807.4	816.4	0.00	0.00	
3,100.0	19.20	98.53	2,962.4	-126.0	839.9	849.3	0.00	0.00	
3,200.0	19.20	98.53	3,056.9	-130.9	872.4	882.2	0.00	0.00	
3,300.0	19.20	98.53	3,151.3	-135.7	905.0	915.1	0.00	0.00	
3,400.0	19.20	98.53	3,245.8	-140.6	937.5	948.0	0.00	0.00	
3,500.0	19.20	98.53	3,340.2	-145.5	970.0	980.8	0.00	0.00	
3,600.0	19.20	98.53	3,434.6	-150.4	1,002.5	1,013.7	0.00	0.00	
3,700.0	19.20	98.53	3,529.1	-155.2	1,035.0	1,046.6	0.00	0.00	
3,800.0	19.20	98.53	3,623.5	-160.1	1,067.5	1,079.5	0.00	0.00	
3,900.0	19.20	98.53	3,718.0	-165.0	1,100.0	1,112.4	0.00	0.00	
4,000.0	19.20	98.53	3,812.4	-169.9	1,132.6	1,145.2	0.00	0.00	
4,100.0	19.20	98.53	3,906.8	-174.7	1,165.1	1,178.1	0.00	0.00	
4,200.0	19.20	98.53	4,001.3	-179.6	1,197.6	1,211.0	0.00	0.00	
4,300.0	19.20	98.53	4,095.7	-184.5	1,230.1	1,243.9	0.00	0.00	
4,400.0	19.20	98.53	4,190.2	-189.4	1,262.6	1,276.7	0.00	0.00	
4,500.0	19.20	98.53	4,284.6	-194.3	1,295.1	1,309.6	0.00	0.00	
4,600.0	19.20	98.53	4,379.0	-199.1	1,327.7	1,342.5	0.00	0.00	
4,700.0	19.20	98.53	4,473.5	-204.0	1,360.2	1,375.4	0.00	0.00	
4,800.0	19.20	98.53	4,567.9	-208.9	1,392.7	1,408.3	0.00	0.00	
4,900.0	19.20	98.53	4,662.4	-213.8	1,425.2	1,441.1	0.00	0.00	
5,000.0	19.20	98.53	4,756.8	-218.6	1,457.7	1,474.0	0.00	0.00	

Planning Report

Database:	USA EDM 5000 Multi Users DB	Local Co-ordinate Reference:	Well 33C-35-795
Company:	Caerus Oil & Gas	TVD Reference:	30' KB @ 9236.0usft (H&P 330)
Project:	Garfield County, CO (UTM 12N)	MD Reference:	30' KB @ 9236.0usft (H&P 330)
Site:	S35-T7S-R95W (35 L)	North Reference:	True
Well:	33C-35-795	Survey Calculation Method:	Minimum Curvature
Wellbore:	OH		
Design:	PLAN #1		

Planned Survey									
Measured Depth (usft)	Inclination (°)	Azimuth (°)	Vertical Depth (usft)	+N/-S (usft)	+E/-W (usft)	Vertical Section (usft)	Dogleg Rate (°/100usft)	Build Rate (°/100u)	Comments / Formations
5,100.0	19.20	98.53	4,851.2	-223.5	1,490.2	1,506.9	0.00	0.00	
5,200.0	19.20	98.53	4,945.7	-228.4	1,522.8	1,539.8	0.00	0.00	
5,300.0	19.20	98.53	5,040.1	-233.3	1,555.3	1,572.7	0.00	0.00	
5,400.0	19.20	98.53	5,134.6	-238.1	1,587.8	1,605.5	0.00	0.00	
5,500.0	19.20	98.53	5,229.0	-243.0	1,620.3	1,638.4	0.00	0.00	
5,600.0	19.20	98.53	5,323.4	-247.9	1,652.8	1,671.3	0.00	0.00	
5,700.0	19.20	98.53	5,417.9	-252.8	1,685.3	1,704.2	0.00	0.00	
5,800.0	19.20	98.53	5,512.3	-257.7	1,717.9	1,737.1	0.00	0.00	
5,900.0	19.20	98.53	5,606.8	-262.5	1,750.4	1,769.9	0.00	0.00	
6,000.0	19.20	98.53	5,701.2	-267.4	1,782.9	1,802.8	0.00	0.00	
6,100.0	19.20	98.53	5,795.6	-272.3	1,815.4	1,835.7	0.00	0.00	
6,200.0	19.20	98.53	5,890.1	-277.2	1,847.9	1,868.6	0.00	0.00	
6,300.0	19.20	98.53	5,984.5	-282.0	1,880.4	1,901.5	0.00	0.00	
6,400.0	19.20	98.53	6,079.0	-286.9	1,912.9	1,934.3	0.00	0.00	
6,500.0	19.20	98.53	6,173.4	-291.8	1,945.5	1,967.2	0.00	0.00	
6,600.0	19.20	98.53	6,267.8	-296.7	1,978.0	2,000.1	0.00	0.00	
6,700.0	19.20	98.53	6,362.3	-301.5	2,010.5	2,033.0	0.00	0.00	
6,800.0	19.20	98.53	6,456.7	-306.4	2,043.0	2,065.9	0.00	0.00	
6,900.0	19.20	98.53	6,551.2	-311.3	2,075.5	2,098.7	0.00	0.00	
7,000.0	19.20	98.53	6,645.6	-316.2	2,108.0	2,131.6	0.00	0.00	
7,100.0	19.20	98.53	6,740.0	-321.1	2,140.6	2,164.5	0.00	0.00	
7,200.0	19.20	98.53	6,834.5	-325.9	2,173.1	2,197.4	0.00	0.00	
7,300.0	19.20	98.53	6,928.9	-330.8	2,205.6	2,230.3	0.00	0.00	
7,339.3	19.20	98.53	6,966.0	-332.7	2,218.4	2,243.2	0.00	0.00	OHIO_CREEK
7,400.0	19.20	98.53	7,023.4	-335.7	2,238.1	2,263.1	0.00	0.00	
7,500.0	19.20	98.53	7,117.8	-340.6	2,270.6	2,296.0	0.00	0.00	
7,600.0	19.20	98.53	7,212.2	-345.4	2,303.1	2,328.9	0.00	0.00	
7,656.9	19.20	98.53	7,266.0	-348.2	2,321.6	2,347.6	0.00	0.00	WILLIAMS_FORK
7,700.0	19.20	98.53	7,306.7	-350.3	2,335.7	2,361.8	0.00	0.00	
7,765.0	19.20	98.53	7,368.0	-353.5	2,356.8	2,383.1	0.00	0.00	Start Drop -3.00
7,800.0	18.15	98.53	7,401.2	-355.1	2,367.9	2,394.4	3.00	-3.00	
7,900.0	15.15	98.53	7,497.0	-359.4	2,396.2	2,423.0	3.00	-3.00	
8,000.0	12.15	98.53	7,594.2	-362.9	2,419.5	2,446.6	3.00	-3.00	
8,100.0	9.15	98.53	7,692.5	-365.6	2,437.8	2,465.1	3.00	-3.00	
8,200.0	6.15	98.53	7,791.6	-367.6	2,450.9	2,478.4	3.00	-3.00	
8,300.0	3.15	98.53	7,891.2	-368.8	2,458.9	2,486.5	3.00	-3.00	
8,400.0	0.15	98.53	7,991.2	-369.2	2,461.8	2,489.3	3.00	-3.00	
8,404.8	0.00	0.00	7,996.0	-369.2	2,461.8	2,489.3	3.00	-3.00	Start 2110.0 hold at 8404.8 MD
8,500.0	0.00	0.00	8,091.2	-369.2	2,461.8	2,489.3	0.00	0.00	
8,504.8	0.00	0.00	8,096.0	-369.2	2,461.8	2,489.3	0.00	0.00	TOP_GAS
8,600.0	0.00	0.00	8,191.2	-369.2	2,461.8	2,489.3	0.00	0.00	
8,700.0	0.00	0.00	8,291.2	-369.2	2,461.8	2,489.3	0.00	0.00	
8,800.0	0.00	0.00	8,391.2	-369.2	2,461.8	2,489.3	0.00	0.00	
8,900.0	0.00	0.00	8,491.2	-369.2	2,461.8	2,489.3	0.00	0.00	
9,000.0	0.00	0.00	8,591.2	-369.2	2,461.8	2,489.3	0.00	0.00	
9,100.0	0.00	0.00	8,691.2	-369.2	2,461.8	2,489.3	0.00	0.00	
9,200.0	0.00	0.00	8,791.2	-369.2	2,461.8	2,489.3	0.00	0.00	
9,300.0	0.00	0.00	8,891.2	-369.2	2,461.8	2,489.3	0.00	0.00	
9,400.0	0.00	0.00	8,991.2	-369.2	2,461.8	2,489.3	0.00	0.00	
9,500.0	0.00	0.00	9,091.2	-369.2	2,461.8	2,489.3	0.00	0.00	
9,600.0	0.00	0.00	9,191.2	-369.2	2,461.8	2,489.3	0.00	0.00	
9,700.0	0.00	0.00	9,291.2	-369.2	2,461.8	2,489.3	0.00	0.00	

Planning Report

Database: USA EDM 5000 Multi Users DB	Local Co-ordinate Reference: Well 33C-35-795
Company: Caerus Oil & Gas	TVD Reference: 30' KB @ 9236.0usft (H&P 330)
Project: Garfield County, CO (UTM 12N)	MD Reference: 30' KB @ 9236.0usft (H&P 330)
Site: S35-T7S-R95W (35 L)	North Reference: True
Well: 33C-35-795	Survey Calculation Method: Minimum Curvature
Wellbore: OH	
Design: PLAN #1	

Planned Survey									
Measured Depth (usft)	Inclination (°)	Azimuth (°)	Vertical Depth (usft)	+N/-S (usft)	+E/-W (usft)	Vertical Section (usft)	Dogleg Rate (°/100usft)	Build Rate (°/100u)	Comments / Formations
9,800.0	0.00	0.00	9,391.2	-369.2	2,461.8	2,489.3	0.00	0.00	
9,900.0	0.00	0.00	9,491.2	-369.2	2,461.8	2,489.3	0.00	0.00	
10,000.0	0.00	0.00	9,591.2	-369.2	2,461.8	2,489.3	0.00	0.00	
10,094.8	0.00	0.00	9,686.0	-369.2	2,461.8	2,489.3	0.00	0.00	CAMEO
10,100.0	0.00	0.00	9,691.2	-369.2	2,461.8	2,489.3	0.00	0.00	
10,200.0	0.00	0.00	9,791.2	-369.2	2,461.8	2,489.3	0.00	0.00	
10,300.0	0.00	0.00	9,891.2	-369.2	2,461.8	2,489.3	0.00	0.00	
10,364.8	0.00	0.00	9,956.0	-369.2	2,461.8	2,489.3	0.00	0.00	ROLLINS
10,400.0	0.00	0.00	9,991.2	-369.2	2,461.8	2,489.3	0.00	0.00	
10,500.0	0.00	0.00	10,091.2	-369.2	2,461.8	2,489.3	0.00	0.00	
10,514.8	0.00	0.00	10,106.0	-369.2	2,461.8	2,489.3	0.00	0.00	TD at 10514.8 - TD

Targets									
Target Name	Dip Angle (°)	Dip Dir. (°)	TVD (usft)	+N/-S (usft)	+E/-W (usft)	Northing (usft)	Easting (usft)	Latitude	Longitude
33C-35-795 PBHL - hit/miss target - Shape - plan hits target center - Circle (radius 50.0)	0.00	0.00	10,106.0	-369.2	2,461.8	14,318,941.70	2,498,667.60	39.391545	-107.962525

Formations						
Measured Depth (usft)	Vertical Depth (usft)	Name	Lithology	Dip (°)	Dip Direction (°)	
7,339.3	6,966.0	OHIO_CREEK				
7,656.9	7,266.0	WILLIAMS_FORK				
8,504.8	8,096.0	TOP_GAS				
10,094.8	9,686.0	CAMEO				
10,364.8	9,956.0	ROLLINS				
10,514.8	10,106.0	TD				

Plan Annotations				
Measured Depth (usft)	Vertical Depth (usft)	+N/-S (usft)	+E/-W (usft)	Comment
200.0	200.0	0.0	0.0	Start Build 3.00
839.9	828.0	-15.8	105.0	Start 6925.1 hold at 839.9 MD
7,765.0	7,368.0	-353.5	2,356.8	Start Drop -3.00
8,404.8	7,996.0	-369.2	2,461.8	Start 2110.0 hold at 8404.8 MD
10,514.8	10,106.0	-369.2	2,461.8	TD at 10514.8