

BONANZA CREEK ENERGY OPERATING CO  
PO BOX 21974  
BAKERSFIELD, California

Seventy Holes K-O-3HNB

**Ensign 128**

## **Post Job Summary**

# **Cement Intermediate Casing**

Date Prepared: 10/22/2013  
Version: 1

Service Supervisor: VIGIL, NICHOLAS

Submitted by: LANSDALE, JUSTIN

**HALLIBURTON**

## Wellbore Geometry

---

Job Tubulars					MD		TVD		Shoe Joint Length ft
Type	Description	Size in	ID in	Wt lbm/ft	Top ft	Bottom ft	Top ft	Bottom ft	
Casing	9 5/8" Surface Casing	9.63	8.921	36.00	0.00	773.00			0.00
Open Hole Section	8 3/4" Open Hole Section		8.750		773.00	6,623.00	773.00	6,623.00	
Casing	7" Intermediate Casing	7.00	6.276	26.00	0.00	6,612.00	0.00	6,612.00	44.00

# HALLIBURTON

## Pumping Schedule

Stage / Plug #	Fluid #	Fluid Type	Fluid Name	Surface Density lbm/gal	Avg Rate bbl/min	Surface Volume	Downhole Volume
1	1	Spacer	Mud Flush	8.40	5.0	24.0 bbl	24.0 bbl
1	2	Cement Slurry	EconoCem B2	12.50	8.0	550.0 sacks	550.0 sacks
1	3	Cement Slurry	ExpandaCem B1	14.60	8.0	220.0 sacks	220.0 sacks

## Fluids Pumped

**Stage/Plug # 1    Fluid 1:**    Mud Flush  
DUMMY MUD / FLUSH / SPACER SBC MATERIAL  
42 gal/bbl    Mud Flush III  
3.5 lbm/bbl    Mud Flush III

Fluid Density: 8.40 lbm/gal  
Fluid Volume: 24.00 bbl

**Stage/Plug # 1    Fluid 2:**    EconoCem B2  
ECONOCEM (TM) SYSTEM

Fluid Weight: 12.50 lbm/gal  
Slurry Yield: 1.89 ft<sup>3</sup>/sack  
Total Mixing Fluid: 10.28 Gal  
Surface Volume: 550.0 sacks  
Sacks: 550.0 sacks

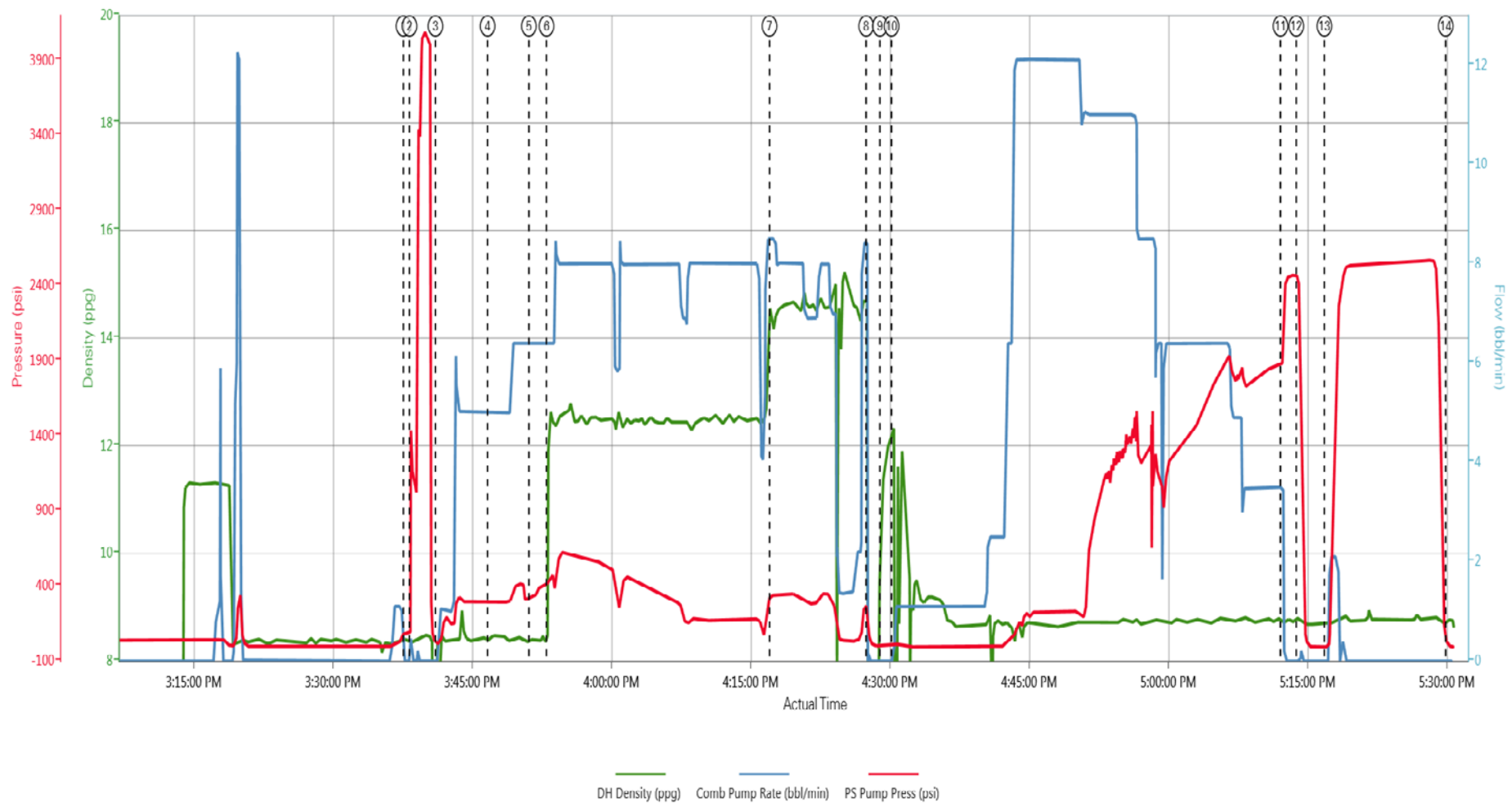
**Stage/Plug # 1    Fluid 3:**    ExpandaCem B1  
EXPANDACEM (TM) SYSTEM

Fluid Weight: 14.60 lbm/gal  
Slurry Yield: 1.46 ft<sup>3</sup>/sack  
Total Mixing Fluid: 6.07 Gal  
Surface Volume: 220.0 sacks  
Sacks: 220.0 sacks

# HALLIBURTON

## Data Acquisition

Bonanza Creek Seventy Holes T-P-5HNB Intermediate



① Start Job 8.41;0.94	④ Mud Flush 8.39;5.289	⑦ 14.6 ppg ExpandaCem 14.32;8.5;342	⑩ Pump Displacement 12.33;0.1	⑬ Casing Test 8.72;0.6
② Test Lincs 8.36;0.1194	⑤ H2O 8.4;6.4;327	⑧ Shutdown 1.43;0.85	⑪ Bump Plug 8.7;3.4;2009	⑭ End Job 8.81;0.4
③ H2O 8.36;0.12	⑥ 12.5 ppg EconoCem 12.3;6.4;437	⑨ Drop Top Plug 10.51;0.0	⑫ Check Floats 8.8;0.2401	

# HALLIBURTON

## Service Supervisor Reports

### Job Log

Date/Time	Chart #	Activity Code	Pump Rate	Cum Vol	Pump	Pressure (psig)	Comments
10/12/2013 13:30		Arrive At Loc					On location time was 1400, Rig had 5 joints of casing left to run
10/12/2013 13:40		Assessment Of Location Safety Meeting					Hazard hunt, Water test, Rig up safety meeting
10/12/2013 14:15		Rig-Down Completed					
10/12/2013 14:40		Rig-Up Completed					Once we were finished we had to wait for casing crew to rig down
10/12/2013 15:20		Pre-Job Safety Meeting					Held safety meeting with all personell involved in job
10/12/2013 15:37		Start Job					
10/12/2013 15:38		Test Lines					Pressure tested lines to 4000 psi
10/12/2013 15:41		Pump Spacer 1	5	20		289.0	H2O
10/12/2013 15:46		Pump Spacer 2	5	24		294.0	Mud Flush
10/12/2013 15:51		Pump Spacer 1	6.4	10		320.0	H2O
10/12/2013 15:53		Pump Lead Cement	8	185		427.0	12.5 ppg EconoCem (550 sks), weight was verified by scale
10/12/2013 16:17		Pump Tail Cement	8	57		345.0	14.6 ppg ExpandaCem (220 sks), weight verified by scale
10/12/2013 16:27		Shutdown					
10/12/2013 16:29		Drop Top Plug					Plug was pre loaded
10/12/2013 16:30		Pump Displacement	11	140		1224.0	Displaced using water
10/12/2013 17:12		Bump Plug	3	248		1800.0	Bumped plug 500 psi over final lift
10/12/2013 17:13		Check Floats					Floats held
10/12/2013 17:17		Pressure Up					Pressured up casing to 2500 psi for 10 minutes
10/12/2013 17:30		End Job					Rig down safety meeting
10/12/2013 17:35		Rig-Down Equipment					
10/12/2013 18:00		Rig-Down Completed					

### The Road to Excellence Starts with Safety

<b>Sold To #:</b> 324725		<b>Ship To #:</b> 3110587		<b>Quote #:</b>		<b>Sales Order #:</b> 900815036	
<b>Customer:</b> BONANZA CREEK ENERGY OPERATING CO				<b>Customer Rep:</b> Grahm, Kenny			
<b>Well Name:</b> Seventy Holes			<b>Well #:</b> K-O-3HNB			<b>API/UWI #:</b>	
<b>Field:</b> WATTENBERG		<b>City (SAP):</b> KERSEY		<b>County/Parish:</b> Weld		<b>State:</b> Colorado	
<b>Contractor:</b> Ensign			<b>Rig/Platform Name/Num:</b> Ensign 128				
<b>Job Purpose:</b> Cement Intermediate Casing							
<b>Well Type:</b> Development Well			<b>Job Type:</b> Cement Intermediate Casing				
<b>Sales Person:</b> FLING, MATTHEW			<b>Srvc Supervisor:</b> VIGIL, NICHOLAS			<b>MBU ID Emp #:</b> 443481	

### Job Personnel

HES Emp Name	Exp Hrs	Emp #	HES Emp Name	Exp Hrs	Emp #	HES Emp Name	Exp Hrs	Emp #
ACEVEDO, ROBERTO Carlos	0.0	551312	HINKLE, BRADLEY Dean	0.0	512123	MULLER, MICHEL B	0.0	529830
ROMERO, JOSEPH M	0.0	512137	SCILEPPI, JOE	0.0	555492	VIGIL, NICHOLAS Joseph	0.0	443481

### Equipment

HES Unit #	Distance-1 way	HES Unit #	Distance-1 way	HES Unit #	Distance-1 way	HES Unit #	Distance-1 way
10025030	55 mile	11036295C	55 mile	11410470C	55 mile	11645063	55 mile
11748359	55 mile	12010168	55 mile	NA	55 mile		

### Well Data

Description	New / Used	Max pressure psig	Size in	ID in	Weight lbm/ft	Thread	Grade	Top MD ft	Bottom MD ft	Top TVD ft	Bottom TVD ft
8 3/4" Open Hole Section				8.75				773.	6623.	773.	6623.
7" Intermediate Casing	Unknow n		7.	6.276	26.		P-110	.	6612.	.	6612.
9 5/8" Surface Casing	Unknow n		9.625	8.921	36.		J-55	.	773.		

### Sales/Rental/3<sup>rd</sup> Party (HES)

Description	Qty	Qty uom	Depth	Supplier
CMT CASING EQUIPMENT BOM	1	JOB		
MILEAGE FOR CEMENTING CREW,ZI	70	MI		
Description	Qty	Qty uom	Depth	Supplier
ZI FUEL SURCHG-CARS/PICKUPS<1 1/2TON	70	MI		
SHOE,FLT,7 8RD,2-3/4 SS II VLV	1	EA		
CLR,FLT,7 LG 8RD 23-26PPF,2-3/4	1	EA		
PLUG,CMTG,TOP,7 IN 17-32#,5.870 NR 24TH	1	EA		
KIT,HALL WELD-A	2	EA		

### Fluid Data

#### Stage/Plug #: 1

Fluid #	Stage Type	Fluid Name	Qty	Qty uom	Mixing Density lbm/gal	Yield ft3/sk	Mix Fluid Gal/sk	Rate bbl/min	Total Mix Fluid Gal/sk
------------	------------	------------	-----	------------	------------------------------	-----------------	---------------------	-----------------	---------------------------

<b>1</b>	<b>Mud Flush</b>		<b>24.00</b>	<b>bbl</b>	<b>8.4</b>			<b>5</b>	
	42 gal/bbl	MUD FLUSH III - SBM (528788)							
	3.5 lbm/bbl	MUD FLUSH III, 40 LB SACK (101633304)							
<b>2</b>	<b>EconoCem B2</b>	<b>ECONOCEM (TM) SYSTEM (452992)</b>	<b>550.0</b>	<b>sacks</b>	<b>12.5</b>	<b>1.89</b>	<b>10.28</b>	<b>8</b>	<b>10.28</b>
	10.28 Gal	FRESH WATER							
<b>3</b>	<b>ExpandaCem B1</b>	<b>EXPANDACEM (TM) SYSTEM (452979)</b>	<b>220.0</b>	<b>sacks</b>	<b>14.6</b>	<b>1.46</b>	<b>6.07</b>	<b>8</b>	<b>6.07</b>
	6.07 Gal	FRESH WATER							
<b>Rates</b>									
<i>Circulating</i>		<i>Mixing</i>		<i>Displacement</i>		<b>Avg. Job</b>			
<i>Cement Left In Pipe</i>	<b>Amount</b>	<b>44 ft</b>	<i>Reason</i>	<b>Shoe Joint</b>					
<i>Frac Ring # 1 @</i>	<i>ID</i>		<i>Frac ring # 2 @</i>	<i>ID</i>		<i>Frac Ring # 3 @</i>	<i>ID</i>		<i>Frac Ring # 4 @</i>
<i>The Information Stated Herein Is Correct</i>				<b>Customer Representative Signature</b>					

